

Measurement for Height

Figure 1: Method for measuring the height of a single or semi-detached dwelling on a flat site in the low density residential districts

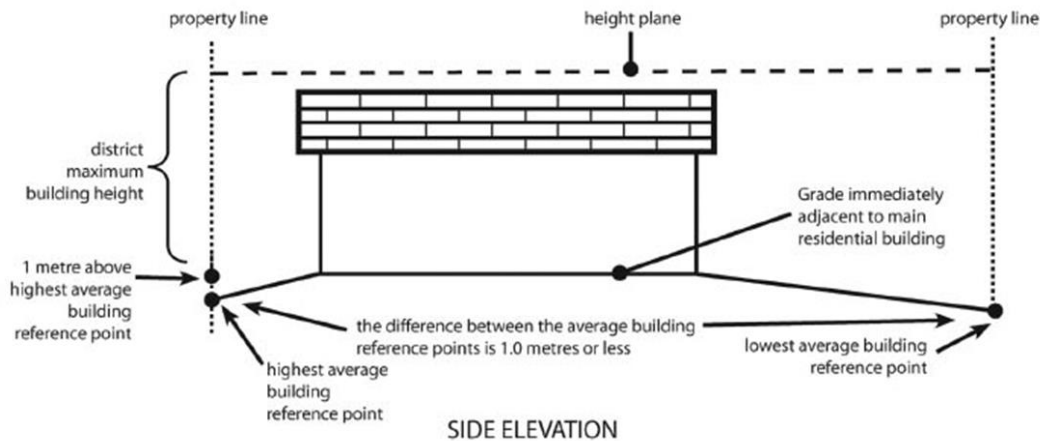


Figure 2: Method for measuring the height of a single or semi-detached dwelling on a sloping site in the low density residential districts

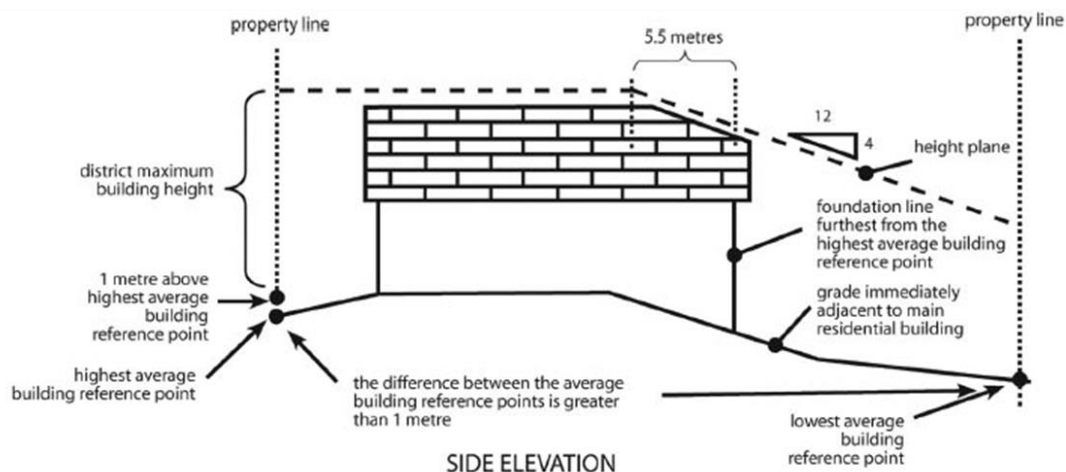


Figure 3: Method for measuring height of a single detached dwelling on a sloped parcel

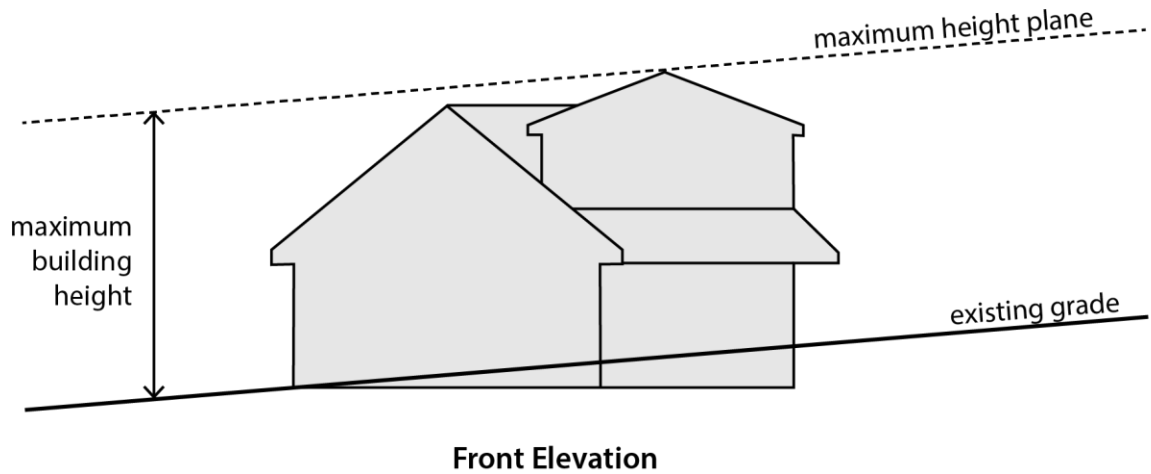


Figure 4: Method for measuring height of a semi-detached dwelling on a sloped parcel

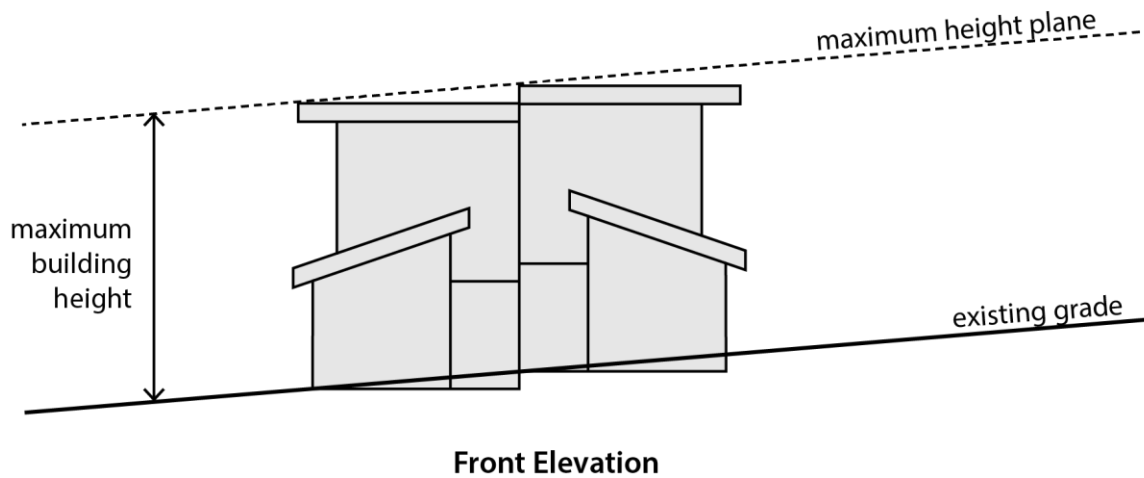


Figure 5: Proposed height chamfer next to a building over 7 metres

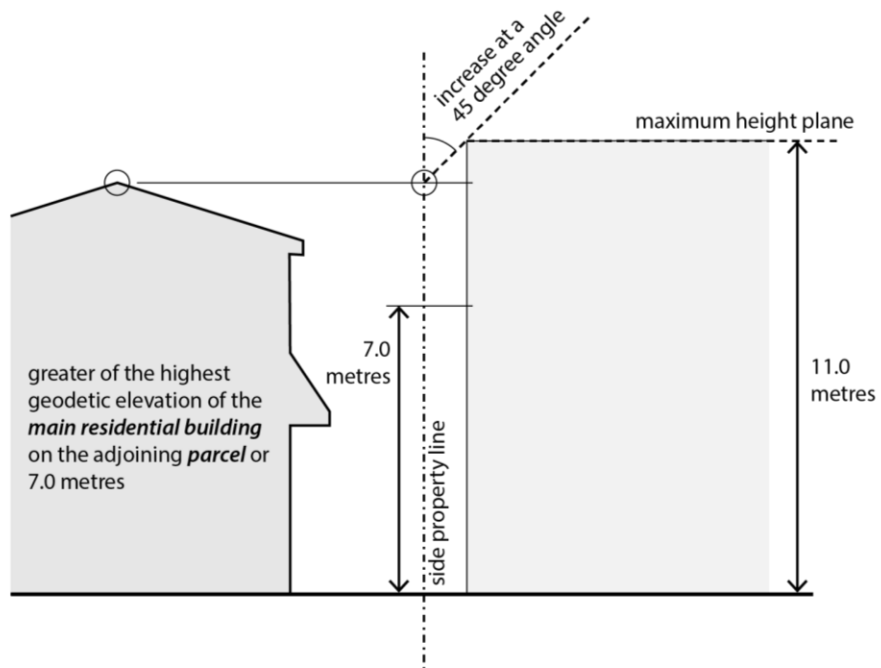


Figure 6: Proposed height chamfer next to a building under 7 metres

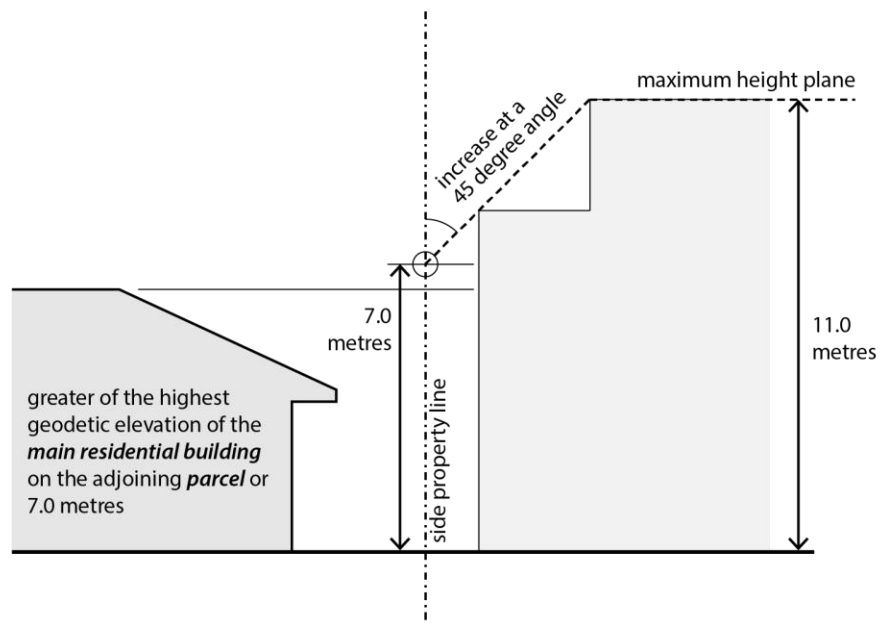


Figure 7: Proposed height chamfer on a corner parcel

