

Shadow Study

SUN SHADOW STUDIES



FIG. 3.4 MARCH 21 & SEPTEMBER 21

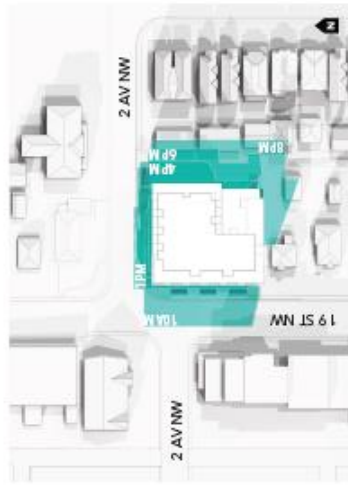


FIG. 3.5 JUNE 21

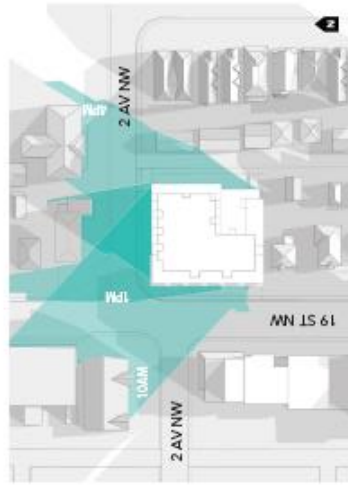


FIG. 3.6 DECEMBER 21

NOTE: Locations, times of day and year have been selected to demonstrate impacts to key edge relationships.

ADDITIONAL NOTE: For the shadow studies and diagrams provided, only building heights and setbacks were used to help illustrate how the sun would be cast by a proposed development upon the existing surrounding context. The results of sun shadows are an conceptual in nature and represent a simplification of the actual architectural details and shading. For the most accurate and detailed shading analysis, a more comprehensive and detailed shading analysis would be required. Some of the shadows shown have been removed for clarity and ease of use.

Shadow Study

FIG. 3.7 WEST-EAST SECTION

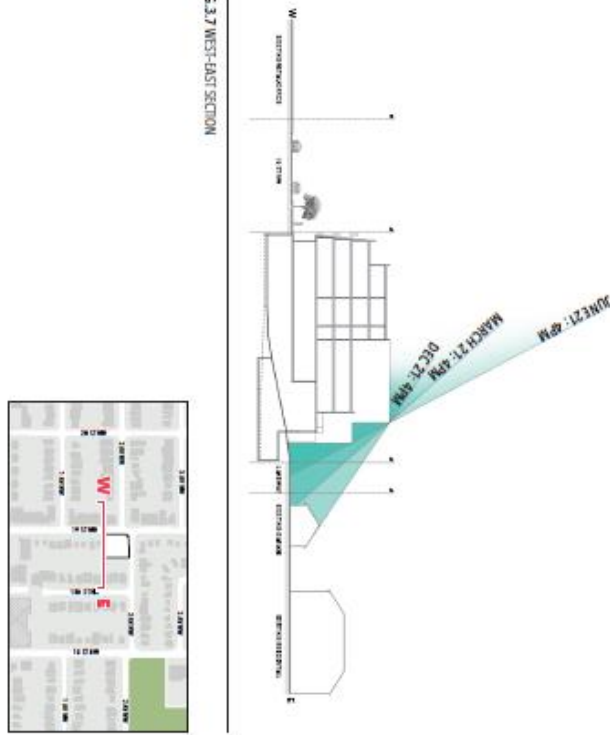


FIG. 3.8 NORTH-SOUTH SECTION

