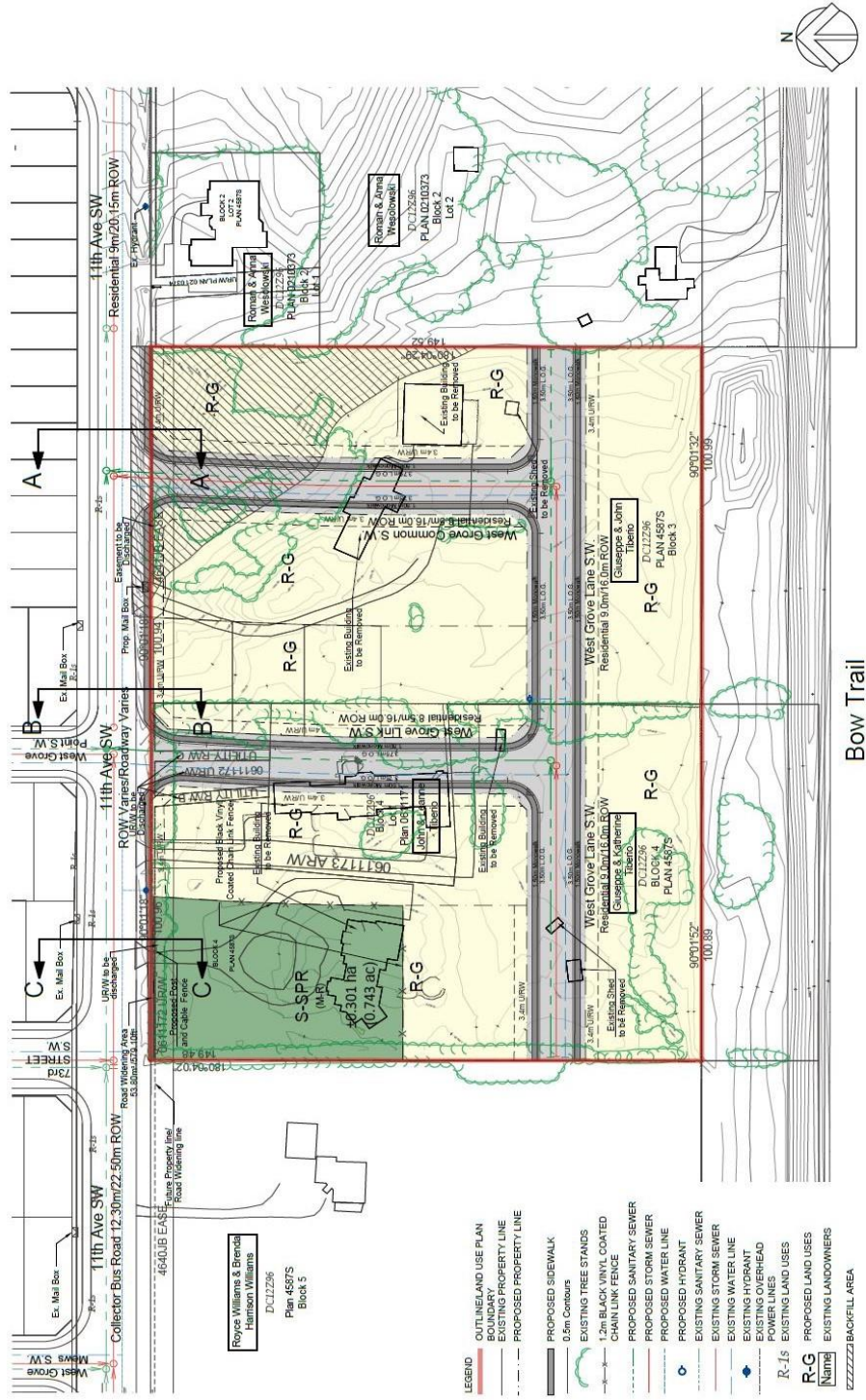


Proposed Outline Plan



SCALE 1:1000

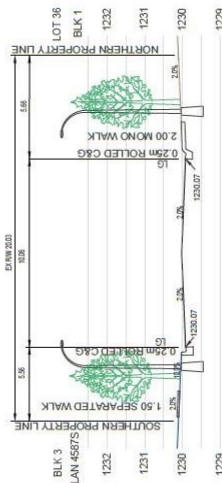
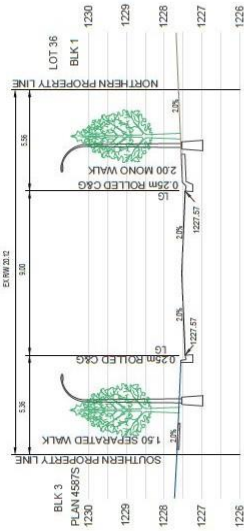
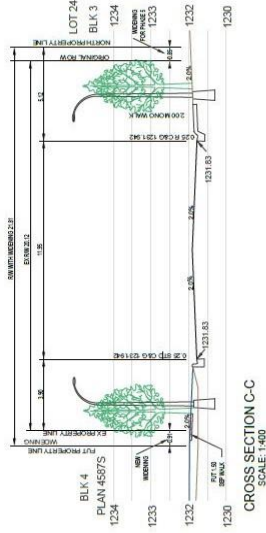
**Land Use & Outline Plan**  
Enlight 8.0  
2019-03-27 11:16 AM  
2384-7372-7233 11th Ave SW Block 3,4 Plan 45875,061171  
Last Saved: Mar 23, 2019, by cns@enr.ca

**West Springs Phase 6**  
1810133 Alberta Ltd.  
Bri-Mor Developments  
J:\11th Ave\_South\West 3 Down\Phase 6\OP\Basel 11999-OP-11.dwg

Bow Trail

IBI GROUP  
305 River St., 11 Avenue SW  
Calgary, Alberta T2C 1G9  
Tel: 403.275.5500 Fax: 403.275.9100

# Proposed Outline Plan



| OUTLINE PLAN STATISTICS |  | DENSITY/INTENSITY (NET)           |                     |  |                       |
|-------------------------|--|-----------------------------------|---------------------|--|-----------------------|
| Gross Area:             |  | Land Use                          | Area                | Anticipated (upha)                           | Maximum (upha)        |
| Public                  | 33.01 ha ±7.44 ac 100%                             | R-G                               | ±2.05 ha            | (31.21 upha) 64 Units                        | (31.21 upha) 64 Units |
| Roads                   | 40.30 ha ±0.75 ac 10%                              | Anticipated Density               | ±3.01 ha (±7.44 ac) | 64   | 64                    |
| Residential             | Residential (9.0m/16.0m ROW) ±0.66 ha ±1.63 ac 22% | Maximum Density                   | ±3.01 ha (±7.44 ac) | 21.26 upha (8.60 uph)                        | 21.26 upha (8.60 uph) |
| Total                   | ±0.96 ha ±2.38 ac                                  | Land Use                          | Area                | Anticipated Units                            | Occupancy Rate        |
| Residential             | ±2.05 ha ±5.07 ac 68%                              | R-G                               | ±3.01 ha            | 64   | 2.6                   |
| R-G                     |  | Anticipated Residential Intensity |                     | 167  | 167                   |
|                         |  |                                   |                     | ±3.01 ha (±7.44 ac) = 55.48 ppha (22.44 pph) |                       |

| LAND USE STATISTICS   |                   |
|-----------------------|-------------------|
| DC12296 to R-G        | ±2.71 ha ±6.70 ac |
| DC12296 to S-SPR (MR) | ±0.30 ha ±0.74 ac |
| TOTAL                 | ±3.01 ha ±7.44 ac |

**West Springs Phase 6**  
1810133 Alberta Ltd.  
Bir-Mor Developments  
2111881\_178542653.02mwp1810133AUCP (Rev1)1810133-03.doc

**Land Use & Outline Plan(Cross-Sections)**  
Drawing No: 7355-77373-233-119-Att-SW-Block-3.4\_Plan-487FS-0811171  
Last saved: May 23, 2018, by: caduser

**IBI GROUP**  
3rd Floor, 2711 Alberta St.  
Edmonton, Alberta T6A 4P9  
780-427-2755 ext. 5600 Fax: 403-275-8610