

Calgary



PUD2019-0393

Joint Use Coordinating Committee and
Joint Use Reserve Fund Annual Report

May 01, 2019



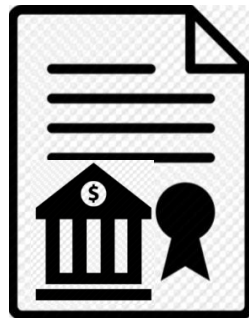


Overview

- ❑ Introduction:
 - ❑ The relationship between the Joint Use Agreement (Agreement) and the Joint Use Coordinating Committee (JUCC)
- ❑ The JUCC 2018 work plan
 - ❑ Awareness and transparency
 - ❑ Recommendations to City Council on land acquisition
- ❑ Reserve Fund
 - ❑ 2018 demand
 - ❑ 2019 demand and beyond



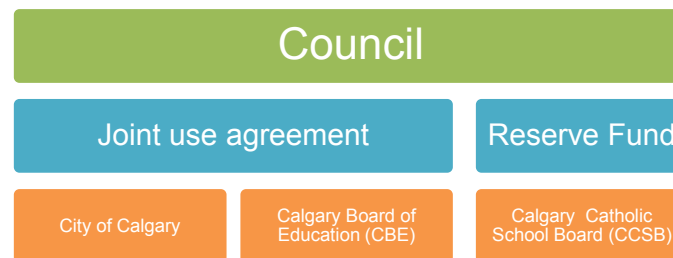
Joint Use Agreement and Joint Use Coordinating Committee Relationship



Joint Use Agreement
(Agreement)

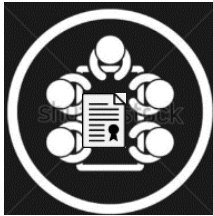


Joint Use Coordinating
Committee (JUCC)





Joint Use Coordinating Committee 2018 Work Plan



- ☐ Awareness and transparency:
 - ☐ Held the second annual Open House meeting in Q4 of 2018
 - ☐ Joint annual meeting between the Site Planning Team (SPT) and the JUCC

- ☐ Made recommendations to City Council on the acquisition of land
 - ☐ Major expenditures included land acquisition for West Macleod Regional Recreation Facility and Library and Seton Regional Facilities



2018 Reserve Fund Demand

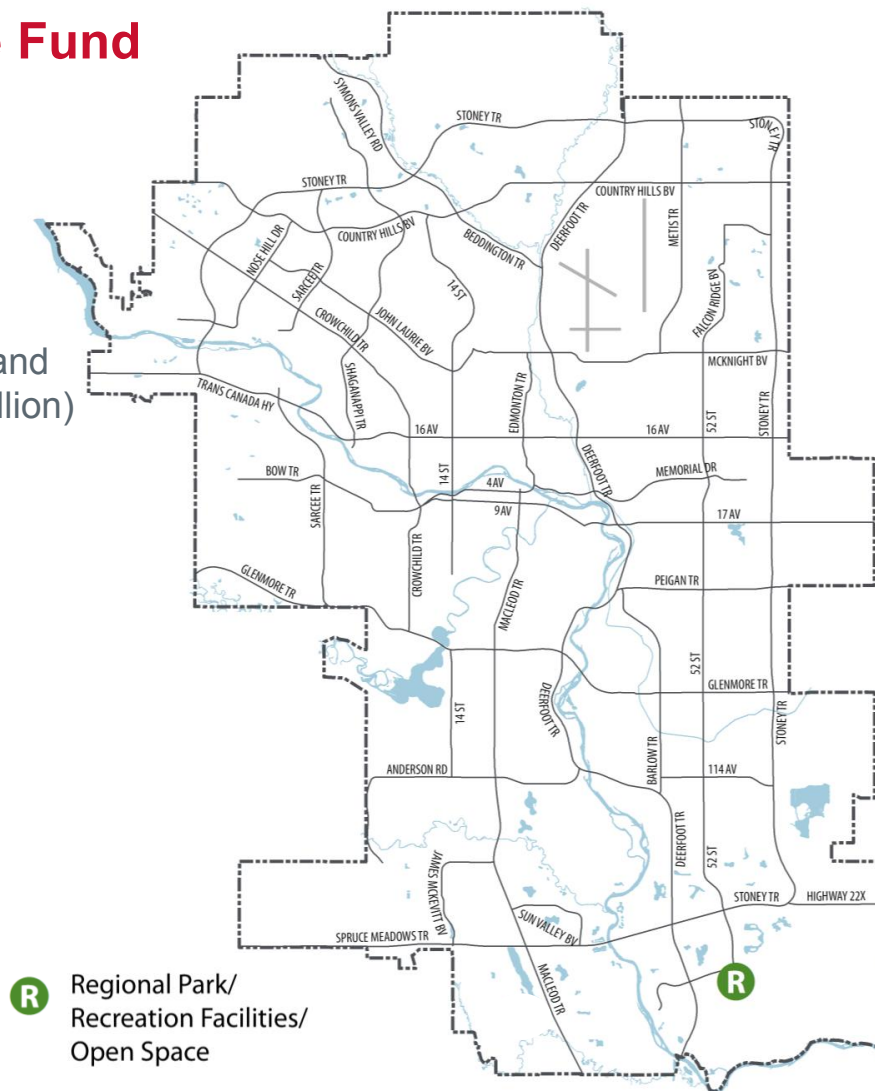
Fund Balance on January 1, 2018	\$ 83.6 million
Fund Receipts	\$ 1.6 million
Fund Investment Income	\$ 1.6 Million
Fund Disbursements, 2018	(\$ 16.4 Million)
Fund Balance on December 31, 2018	\$ 70.4 Million



2019 Reserve Fund Demand

Regional Park, Recreation Facilities and Open Space:

- ☐ Remaining Contributions to the Land Servicing Costs in Seton (\$3.5 million)





Reserve Fund - Next Five Years (2020-2024)

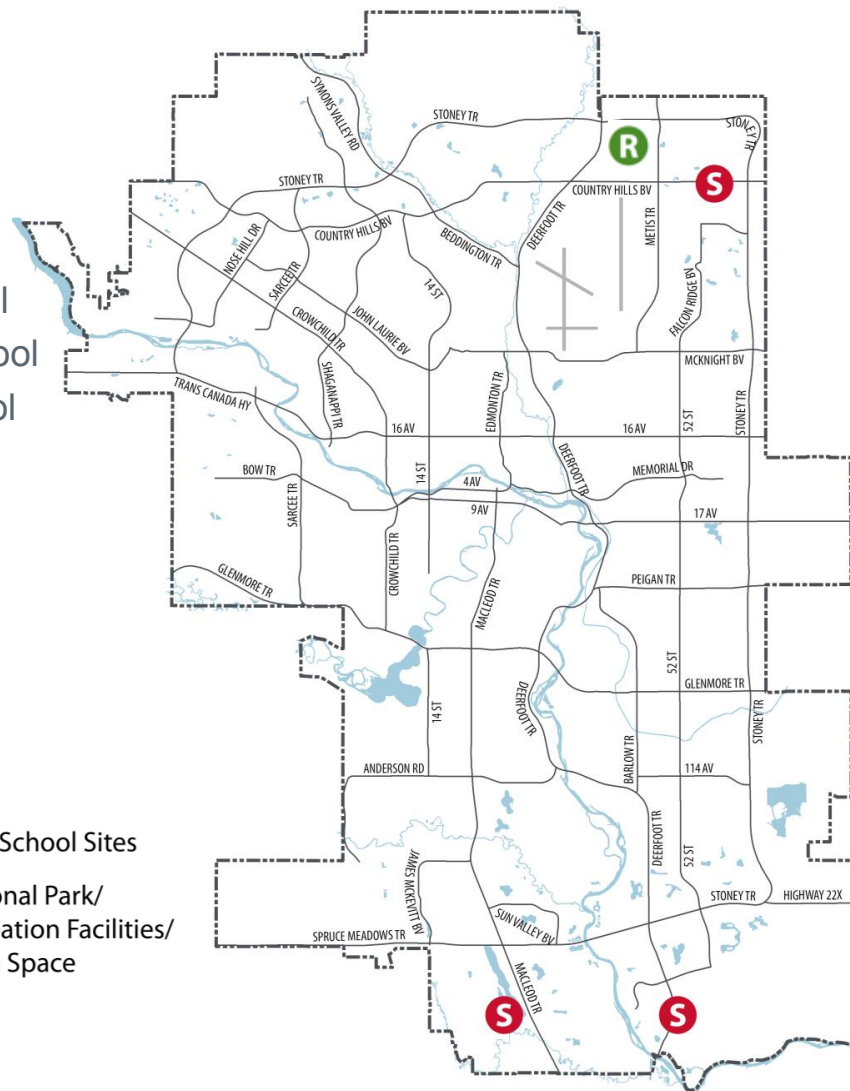
High School Sites:

- ☐ Cornerstone CBE High School
- ☐ West Macleod CBE High School
- ☐ Rangeview CCSD High School

Regional Park and Recreation Facilities:

- ☐ Skyview Regional Recreation Facility and Library

- S High School Sites
- R Regional Park/
Recreation Facilities/
Open Space





Reserve Fund - Beyond Five Years (2025 and beyond)

High School Sites:

- ☐ Glacier Ridge CCSD High School
- ☐ Glacier Ridge CBE High School
- ☐ Belvedere CBE High School
- ☐ Keystone CBE High School
- ☐ Providence CBE High School

Regional Park and Recreation Facilities:

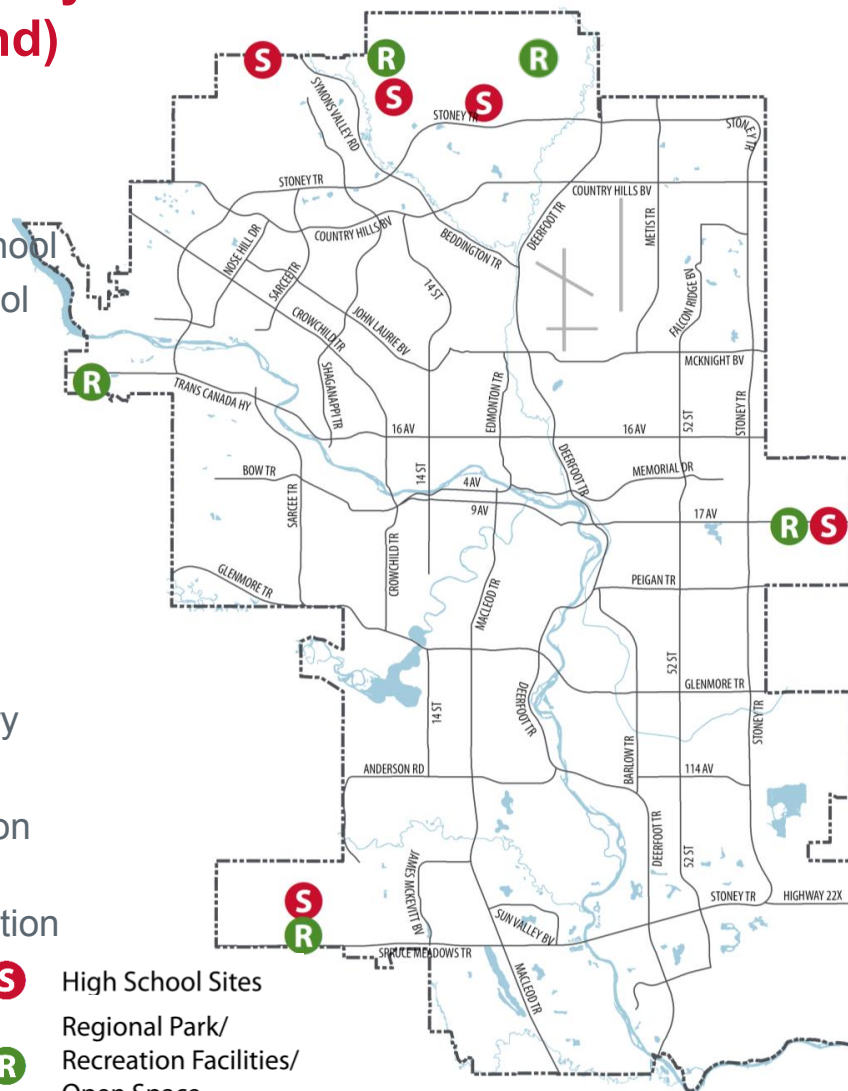
- ☐ Glacier Ridge Regional Recreation Facility and Library
- ☐ Providence Athletic Park
- ☐ Belvedere Regional Recreation Facility and Library
- ☐ Nose Creek Regional Recreation Facility and Library
- ☐ West View Regional Recreation Facility



High School Sites



Regional Park/
Recreation Facilities/
Open Space





Recommendation:

That the SPC on Planning and Urban Development recommend that Council:

1. Receive for information the Joint Use Coordinating Committee and Joint Use Reserve Fund Annual Report and attachments.

Reasons for Recommendation:

The report responds to Council's direction to provide an annual overview of the Joint Use Coordinating Committee and an update on the status of the Joint Use Reserve Fund to Council.