

CITY OF CALGARY
RECEIVED
IN ENGINEERING TRADITIONS ROOM

06/04/2016

APR 06 2016

ITEM: CPS2016-0297
Administration

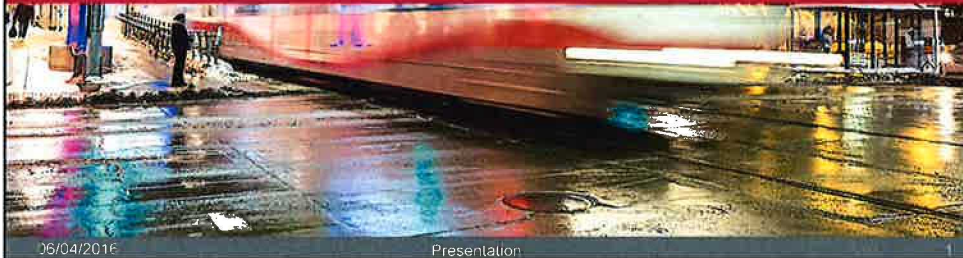
Calgary



CPS2016-0297

Cultural Municipal Sustainability Initiative

Program Update and Recommended Projects for Funding
2016 April 06



06/04/2016

Presentation

Calgary



Background

2008 February:

- Council approves 5% MSI funds towards culture-related infrastructure projects (up to \$165 million)


To Date:

- \$67 million invested in 9 projects
- \$1 from The City toward every community-led project leveraged \$3 from the private sector & other government levels

06/04/2016

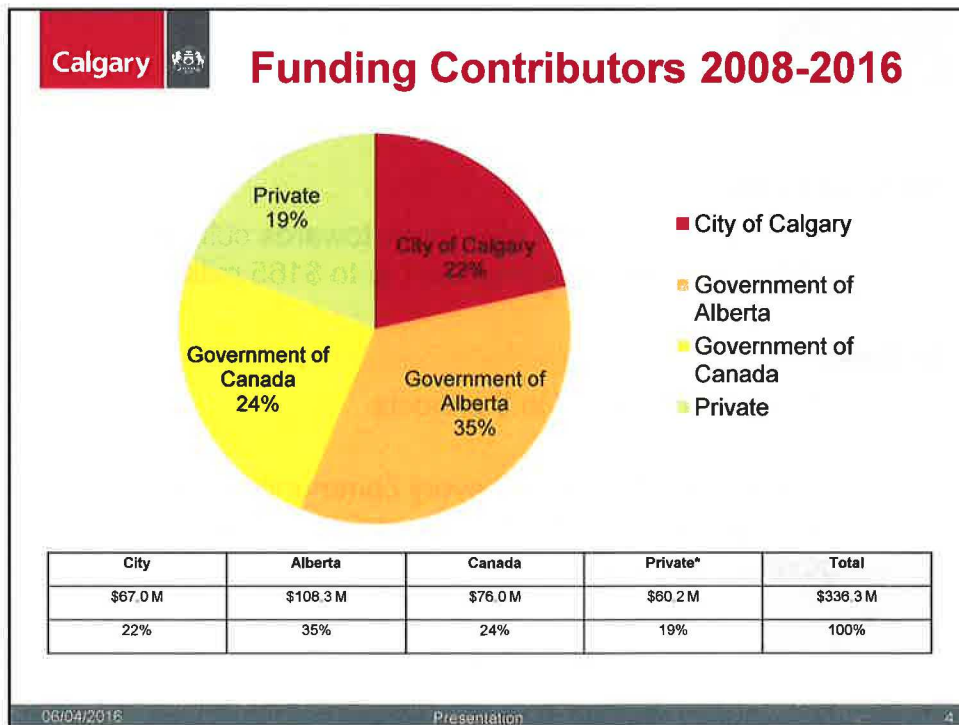
Presentation



Calgary  **CMSI Funds Approved by Council**

Project	Estimated Budget (in Millions)	Council Approved (in Millions)	Percentage of Contribution
COMPLETED:			
Civic Art Collection Storage	\$1.2	\$1.2	100%
Canada's Sports Hall of Fame	\$30.0	\$5.0	17%
Taylor Centre for the Performing Arts	\$63.3	\$10.3	16%
Folk Festival Hall	\$5.2	\$1.8	35%
Nickle Galleries	\$50.5	\$3.2	6%
IN PROGRESS:			
National Music Centre	\$94.0	\$25.0	27%
Calgary Film Centre	\$22.8	\$10.0	44%
DJD Dance Centre	\$17.9	\$5.5	31%
King Edward School Arts Incubator	\$26.6	\$5.0	19%
TOTAL:	\$311.5	\$67.0	22%

06/04/2016 Presentation 3





What we have accomplished so far...

- **Projects completed or under construction have added:**
 - 450,000 ft² of cultural infrastructure
 - 74,000 ft² are feet of exhibition space
 - 880 seats added in concert halls and theatres
 - 132,000 people have attended performances and exhibits in the new spaces to date



Completed Projects

Civic Art Collection Storage



Conservation and maintenance space for 1,200+ pieces. Collection valued at over \$5 million. It is exhibited in 64 public buildings such as libraries and schools.

Canada's Sports Hall of Fame



Shares the stories of inductees in a 40,000 sq. ft. facility featuring 12 interactive galleries and a collection of over 100,000 artefacts.

Taylor Centre for the Performing Arts



Homes to the MRU Conservatory and Bella Concert Hall. 95,000 sq. ft. facility includes: 3 performance venues, rehearsal halls, classrooms, studios, meeting and student rooms.

Folk Festival Hall




A 4,000 sq. ft. intimate performance and event space. Home to the Calgary Folk Music Festival office. Provides year-round direct music programming.

Nickle Galleries




Exhibition, gallery and mezzanine spaces within the Taylor Family Digital Library at U of C. Includes art and artefact storage, workshops and room for lectures and talks.

Calgary




Projects In Progress

National Music Centre




The **160,000 sq. ft.** Studio Bell will include a **300-seat performance space**, a live music venue, 21 exhibition galleries, recording studio space, artefact conservation and 2 Canadian music Halls of Fame.
Project completion: 2016

Calgary Film Centre




This **85,000 sq. ft.** centre for the creative and digital media industries will include purpose-built sound stages, warehouse space and multi-purpose space.
Project completion: 2016

DJD Dance Centre



The **40,000 sq. ft.** facility will include 7 dance studios, students' lounge and wardrobe construction space. One studio transforms into a **230-seat theatre** performance space.
Project completion: 2016

King Edward School Arts Incubator



The transformation of a 100-year old sandstone school will provide **47,000 sq. ft.** of affordable shared space for arts and not for profit organizations.
Project completion: 2017

06/04/2016
Presentation
7


Calgary



Guiding Documents


- City of Calgary Guidelines for Culture-Related Infrastructure Projects
- Cultural Infrastructure Funding Framework
- City-Cultural Municipal Sustainability Initiative Requirements
- CADA's Cultural Spaces for the Arts Strategy and Capital Plan

06/04/2016
Presentation
8

Calgary  **Due Diligence Evaluation Process**

- Ability to finance
(including, for community-led projects, confirmation that 90% of funding from others is secured)
- Corporate Project Management Framework
- The City's design guidelines and LEED
- Operational sustainability

06/04/2016 Presentation

Calgary  **Projects for Capital Budget Appropriation**

CMSI Funds Remaining: \$71.0million

Projects ready to proceed immediately:

Centennial Planetarium	\$24.5 million
Treasures of China, Calgary Zoo	\$8.15 million
King Edward School Arts Incubator	<u>\$1.5 million</u>
TOTAL APPROPRIATION	<u>\$34.15 million</u>

06/04/2016 Presentation 10

Calgary

Projects for Approval in Principle

CMSI Remaining Funds \$36.85 million

Projects recommended by CSIP or CPRIP:

In-Camera Project	\$5 million
Calgary Opera	\$7.5 million
8 Community Cultural Spaces	<u>\$16 million</u>

CMSI Remaining Funds \$8.35 million

06/04/2016
Presentation
11

Calgary

Future Projects

Map 1 - Future Community Cultural Spaces

06/04/2016
Presentation
12



Future Investment

- I. Review the process for intake, evaluation and decision-making.
- II. Recognize the role for both The City and the community in providing arts and cultural spaces and facilities.
- III. Further development of an evidence-based and strategic approach for prioritizing funding of cultural infrastructure projects.
- IV. Once gaps, opportunities and priorities are identified, assess each one for readiness, capacity and sustainability



Reasons for Recommendations

- Cultural spaces enrich community – providing gathering spaces, tourist destinations
- Place a priority on the preservation of City cultural and heritage assets
- Leverage external investments
- Promote strong international relationships
- Align with Council's priority to build a city of inspiring neighbourhoods and to leverage infrastructure investment as economic stimulus this year



Recommendations

Recommended Projects for Funding Appropriation

Approve a capital appropriation of:

- **\$24.5** million for the Centennial Planetarium
- **\$8.15** million for the Treasures of China (Calgary Zoo)
- **\$1.5** million for King Edward School Arts Incubator

Recommended In-Principle Projects

- Approve that the balance of CMSI **funds be allocated in principle for use towards recommended projects** listed in Attachment 1
- Approve, in principle, a capital appropriation increase as **recommended** in Attachment 5 (In camera)

Recommended Strategy for Cultural Infrastructure Funding

Direct Administration to:

- continue to work with CADA to renew the program strategy
- pursue replenishing capital funds for cultural capital infrastructure.