

# **CALGARY SAFE CONSUMPTION SITE**

## **MONTHLY REPORTS**

**DECEMBER 2017 – JANUARY 2019**

## Safeworks Monthly Report – November 2017: Supervised Consumption Services

Date: December 11, 2017

### Background

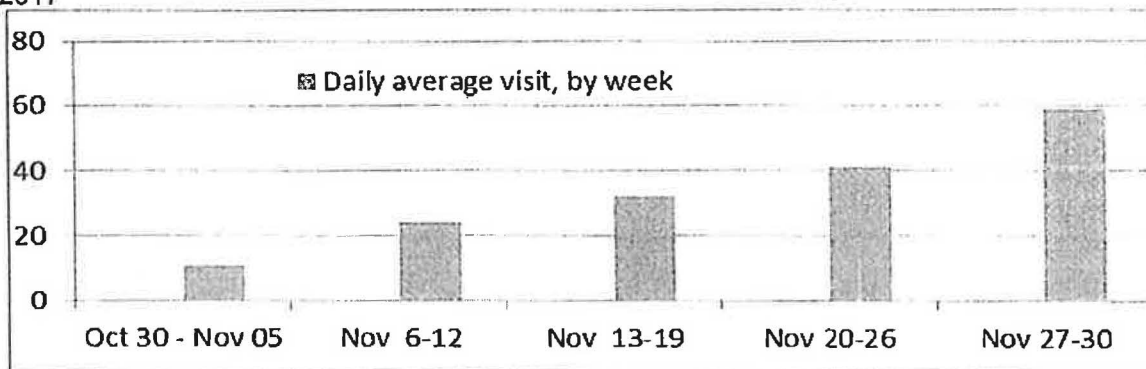
Safeworks Supervised Consumption Services (SCS) launched on October 30, 2017 in a temporary facility with full federal exemption to the Controlled Drugs and Substances Act from Health Canada. The staff team consists of 8 part-time and 9 casual RNs, and 4 part time and 1 casual administrative staff. Direct service providers are supported by the Safeworks Associate Manager, Program Coordinator, and Clinical Nurse Educator.

### Service Uptake

From October 30, 2017 to November 30, 2017, Safeworks SCS cared for **224 unique individuals** in **990 visits**.

Uptake of services increased over time. The average number of visits per day has increased from 11 in the first week of operations (October 30 – November 5), to 59 visits per day averaged from November 27 – November 30.

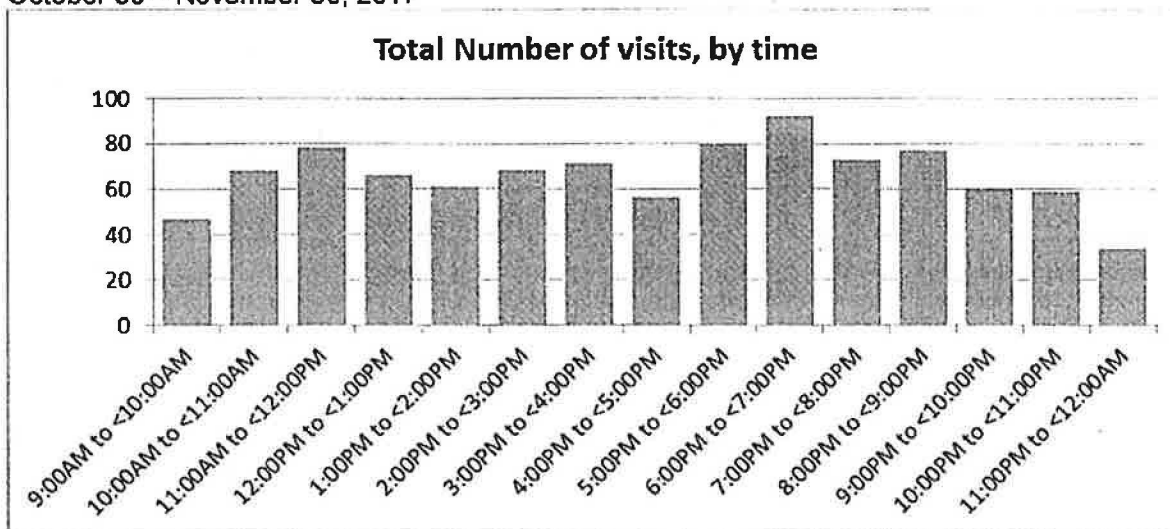
Table 1: Safeworks SCS Average Number of Daily Visits by Week October 30 – November 30, 2017



The majority of clients used Safeworks SCS more than once, often within the same day (up to 7 times in one day). Not all clients consumed drugs on site; 16.5% of visits reflect harm reduction supply and/or naloxone kit distribution, monitoring post-consumption elsewhere, wound care, or social support and referral services.

Safeworks SCS hours of operation are from 9:00am to 11:30pm, and staff are on site from 8:30am to 12:30am. Safeworks SCS is busiest from 11:00am – 12:00pm and 5:00pm – 9:00pm, although service uptake is consistent throughout the day.

Table 2: Safeworks SCS Total Number of Visits by Time (hourly – based on time of admission)  
October 30 – November 30, 2017



Client feedback is generally very positive; clients report feeling welcome, and verbalize that they are pleased to see this service offered in Calgary, and offered by Alberta Health Services (AHS): *"What you gals are doing here is just incredible. I'm really glad this is here. This is great stuff"* – Client feedback, November 1, 2017

#### Drug Use and Overdose Prevention and Response

Drugs were consumed on site under the supervision of Registered Nurses **827 times**. Only one of which was ingestion (swallowing) and 14 of which were intranasal (snorting). With each injection, RNs are available to provide education on vein care, injection technique, and overdose prevention.

The most frequently reported drugs used were meth/crystal (316 times), fentanyl (202 times), and heroin (180 times). Clients may use more than one drug within a single injection/consumption and as such, these counts are not reported as percentages.

Naloxone kits are offered to all clients accessing Safeworks SCS, and **138 take-home naloxone kits** were distributed to clients in the first month of operations.

From October 30 – November 30, 2017, Safeworks staff responded to **26 overdoses** within the temporary facility, of which 17 only required supplemental oxygen. Seven overdoses required naloxone and two overdoses also required EMS response.

#### Wrap-Around Care and Referrals

In order to provide streamlined access to specialized care, Safeworks SCS has partnerships with both AHS and external community partners. From October 30 – November 30, 2017, Safeworks SCS staff made 33 referrals, including 12 referrals to social work, and 7 referrals to the Opioid Dependency Program (ODP). Currently, one client is successfully maintained on Opioid Agonist Therapy at ODP.

**Data Collection and Program Evaluation**

Client demographic information is captured in paper records within the client's chart, and therefore they are not available on a monthly basis.

Safeworks is partnering with the Institute of Health Economics to conduct a comprehensive provincial program evaluation of SCS.

**Prepared By:** Claire O'Gorman, Program Coordinator, Safeworks  
Anmmd Kamruzzaman, Epidemiologist, Surveillance

**Attachment(s):** N/A



## Safeworks Monthly Report – December 2017: Supervised Consumption Services

Date: January 9, 2018

### Background

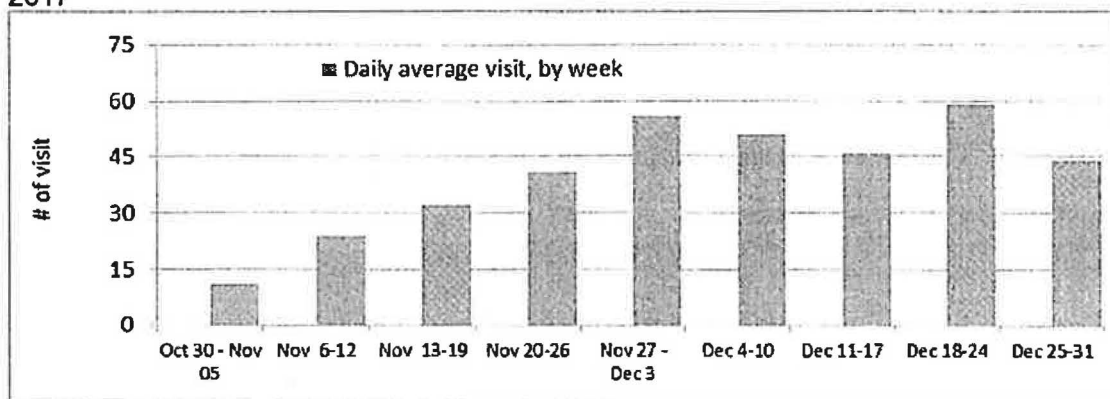
Safeworks Supervised Consumption Services (SCS) launched on October 30, 2017 in a temporary facility at the Sheldon M. Chumir Health Centre with full federal exemption to the Controlled Drugs and Substances Act from Health Canada. The staff team consists of 8 part-time and 9 casual RNs, and 4 part time and 1 casual administrative staff. Direct service providers are supported by the Safeworks Associate Manager, Program Coordinator, and Clinical Nurse Educator.

### Service Uptake

From October 30, 2017 to December 31, 2017, Safeworks SCS had **2551 client visits**. In November, the site saw 224 unique individuals, and in December, the site saw **316 unique individuals**.

Uptake of services increased over time. The average number of visits per day has increased from 11 in the first week of operations (October 30 – November 5), to 44 visits per day averaged from December 25 – 31, 2017.

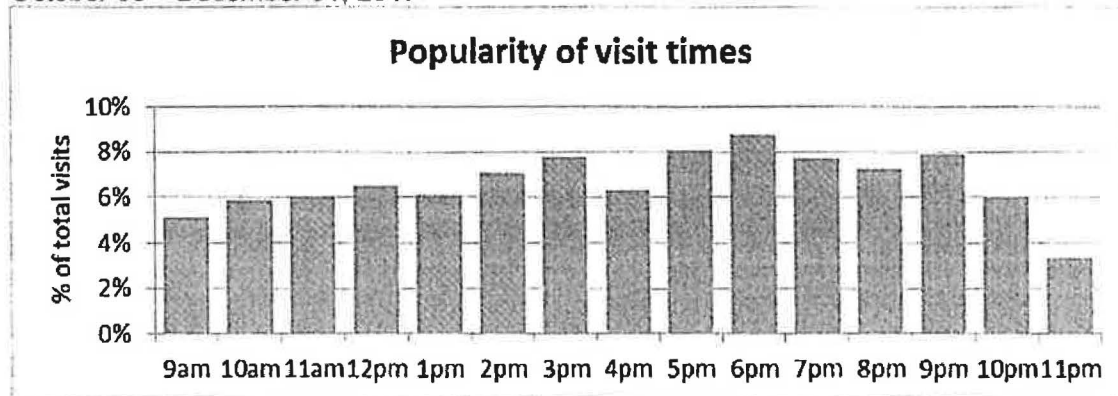
Table 1: Safeworks SCS Average Number of Daily Visits by Week October 30 – December 31, 2017



The majority of clients used Safeworks SCS more than once, often within the same day (up to 9 times in one day). Not all clients consumed drugs on site; 17.4% of visits from October 30 – December 31, 2017 reflect harm reduction supply and/or naloxone kit distribution, monitoring post-consumption from use off site, wound care, or social support and referral services.

Safeworks SCS hours of operation are from 9:00am to 11:30pm, and staff are on site from 8:30am to 12:30am. On average, the busiest time at Safeworks is 5:00pm – 7:00pm, although service uptake is consistent throughout the day.

Table 2: Safeworks SCS Total Number of Visits by Time (hourly – based on time of admission)  
October 30 – December 31, 2017



Client feedback is generally very positive; clients report feeling welcome, and verbalize that they are pleased to see this service offered in Calgary, and that it is offered by Alberta Health Services (AHS):

*"What you gals are doing here is just incredible. I'm really glad this is here. This is great stuff"* – Client feedback, November 1, 2017

### Drug Use and Overdose Prevention and Response

From October 30 to December 31, 2017 drugs were consumed on site under the supervision of Registered Nurses **2108** times. With each client who uses drugs by injection, RNs are available to provide education on vein care, infection prevention, and injection technique. There were only two instances of drug ingestion (swallowing) and 41 instances of intranasal use (snorting).

The most frequently reported drugs used were meth/crystal (847 times), fentanyl (580 times), and heroin (442 times). Clients may use more than one drug within a single injection/consumption and as such, these counts are not reported as percentages.

Naloxone kits and overdose prevention education are offered to all clients accessing Safeworks SCS, and from October 30 – December 31, 2017 **166 take-home naloxone kits** were distributed to clients.

From October 30 – December 31, 2017, Safeworks staff responded to a **total of 55 overdoses**.

In December, 2017, Safeworks staff responded to **29 overdoses** within the temporary facility, of which 18 required supplemental oxygen alone; eleven overdoses required naloxone and four also required EMS response.

From October 30 – November 30, 2017, Safeworks staff responded to 26 overdoses within the temporary facility, of which 17 required supplemental oxygen alone; nine overdoses required naloxone and two overdoses also required EMS response.

#### **Wrap-Around Care and Referrals**

In order to provide streamlined access to specialized care, Safeworks SCS has partnerships with both AHS services and external community partners. In December, 2017, Safeworks made 33 referrals to social work and 4 referrals to the Opioid Dependency Program (ODP). From October 30 – November 30, 2017, Safeworks SCS staff made 33 referrals, including 12 referrals to social work, and 7 referrals to the Opioid Dependency Program (ODP). Currently, two clients are successfully maintained on Opioid Agonist Therapy at ODP.

#### **Data Collection and Program Evaluation**

Client demographic information is captured in paper records within the client's chart, and therefore these data are not available on a monthly basis.

Safeworks is partnering with the Institute of Health Economics to conduct a comprehensive provincial program evaluation of SCS.

**Prepared By:** Claire O'Gorman, Program Coordinator, Safeworks  
Anmmd Kamruzzaman, Epidemiologist, Surveillance

**Attachment(s):** N/A

## **Safeworks Monthly Report – January 2018: Supervised Consumption Services**

**Date:** February 13, 2018

### **Background**

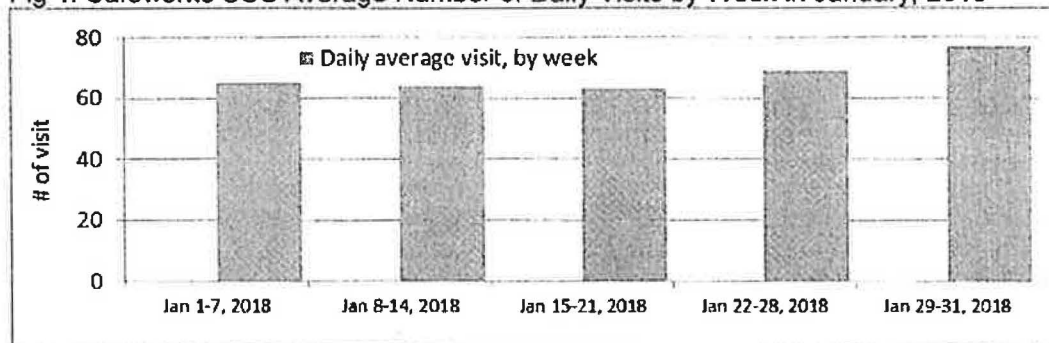
Safeworks Supervised Consumption Services (SCS) launched on October 30, 2017 in a temporary facility at the Sheldon M. Chumir Health Centre with full federal exemption to the Controlled Drugs and Substances Act from Health Canada. On January 15<sup>th</sup>, 2018, the temporary interim facility closed, and the permanent facility inside the Sheldon M. Chumir Health Centre opened for operations.

### **Service Uptake**

From October 30, 2017 to January 31, 2018, Safeworks SCS had **4605 client visits**. In January, the site saw **395 unique individuals** in 2054 visits.

Uptake of services increased over time. The average number of visits per day has increased from 11 in the first week of operations (October 30 – November 5), to 77 visits per day averaged from January 29 - 31, 2018.

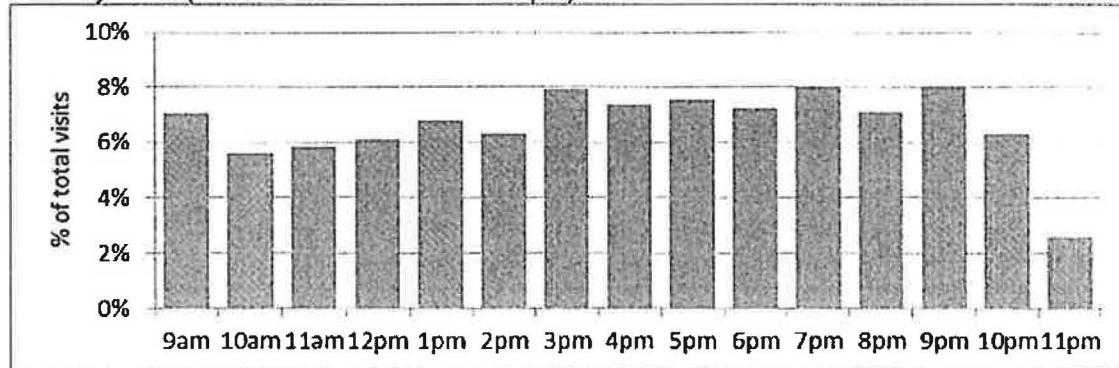
**Fig 1: Safeworks SCS Average Number of Daily Visits by Week in January, 2018**



The majority of clients use Safeworks SCS more than once, often within the same day. Not all clients consumed drugs on site; 16% of visits in January reflect harm reduction supply and/or naloxone kit distribution, monitoring post-consumption from use off site, wound care, or social support and referral services.

Safeworks SCS hours of operation are from 9:00am to 11:30pm, and staff are on site from 8:30am to 12:30am. Service uptake is consistent throughout the day.

Fig 2: Safeworks SCS Total Number of Visits by Time (hourly – based on time of admission) January 2018 (note: intake closes at 11:30pm)



### Drug Use and Overdose Prevention and Response

In January 2018, drugs were consumed on site under the supervision of Registered Nurses **1687** times. With each client who uses drugs by injection, RNs are available to provide education on vein care, infection prevention, and injection technique. In January, there were only three instances of drug ingestion (swallowing) and 29 instances of intranasal use (snorting).

The most frequently reported drugs used in January were meth/crystal (905 times) and fentanyl (403 times). Clients may use more than one drug with a single injection/consumption and as such, these counts are not reported as percentages.

Naloxone kits and overdose prevention education are offered to all clients accessing Safeworks SCS, and in January 2018 **163 overdose response kits** were distributed to clients.

From October 30, 2017 – January 31, 2018, Safeworks staff responded to a **total of 90 overdoses**.

In January 2018, Safeworks staff responded to 35 overdoses, of which 18 only required supplemental oxygen; twelve overdoses required naloxone and five also required EMS response.

Table 1: Safeworks SCS Summary of Visits and Overdoses by Month

Month	Number of client visits	Number of Overdoses
October 30 – November 30, 2017	990	26
December, 2017	1561	29
January, 2018	2054	35
<b>Total</b>	<b>4605</b>	<b>90</b>

### **Client Demographics**

Client who accessed Safeworks SCS for the first time from October 30, 2017 – January 31, 2018 range in age from 16-69 years old, with an average age of 35 years. The majority of clients are male (68%). Of the 258 clients who shared where they live, 72% have no fixed address or stay in a homeless shelter.

### **Wrap-Around Care and Referrals**

In order to provide streamlined access to specialized care, Safeworks SCS has partnerships with both AHS programs and external community partners. In January 2018, Safeworks made 33 referrals, including 11 referrals to social work and 12 referrals to the Opioid Dependency Program (ODP).

### **Program Evaluation**

Safeworks is partnering with the Institute of Health Economics to conduct a comprehensive provincial program evaluation of SCS.

**Prepared By:** Claire O'Gorman, Program Coordinator, Safeworks  
Anmmd Kamruzzaman, Epidemiologist, Surveillance

## **Safeworks Monthly Report – February 2018: Supervised Consumption Services**

**Date:** March 14, 2018

### **Background**

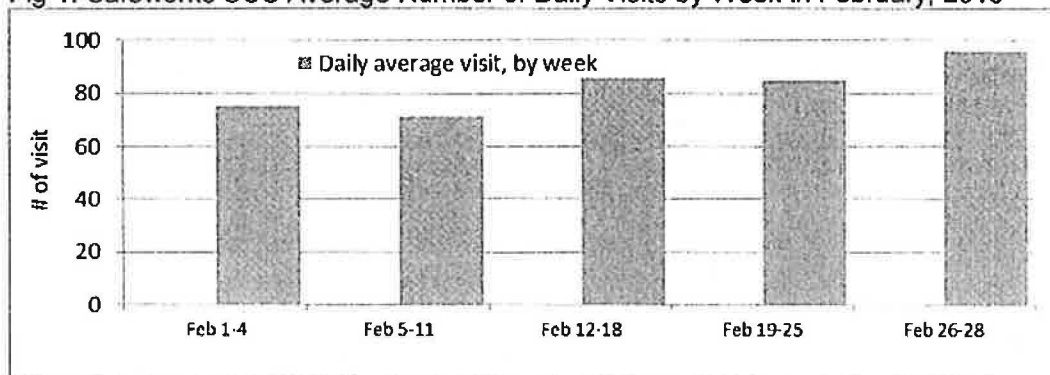
Safeworks Supervised Consumption Services (SCS) launched on October 30, 2017 in a temporary facility at the Sheldon M. Chumir Health Centre with full federal exemption to the Controlled Drugs and Substances Act from Health Canada. On January 15<sup>th</sup>, 2018, the temporary facility closed, and the permanent facility inside the Sheldon M. Chumir Health Centre opened for operations.

### **Service Uptake**

From October 30, 2017 to February 28, 2018, Safeworks SCS had **6886 client visits**. In February, the site saw **388 unique individuals** in **2281 visits**.

Uptake of services increased over time. The average number of visits per day has increased from 11 in the first week of operations (October 30 – November 5), to 96 visits per day averaged from February 26 - 28, 2018.

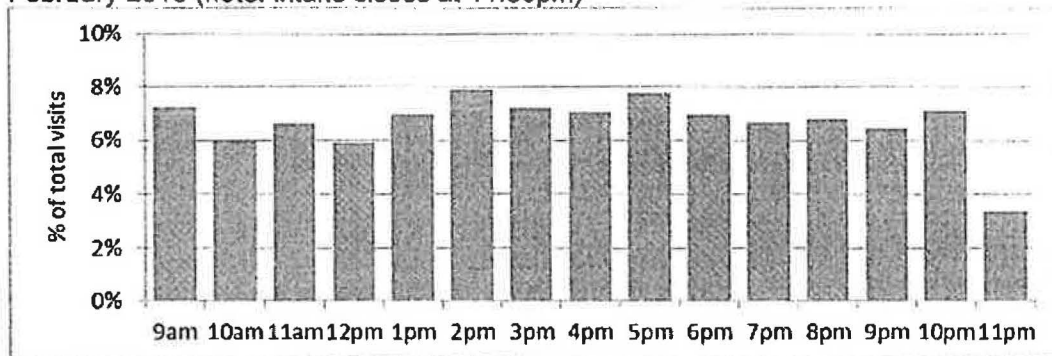
**Fig 1: Safeworks SCS Average Number of Daily Visits by Week in February, 2018**



The majority of clients use Safeworks SCS more than once, often within the same day. Not all clients consumed drugs on site; 12% of visits in February reflect harm reduction supply and/or naloxone kit distribution, monitoring post-consumption from use off site, wound care, or social support and referral services.

Safeworks SCS hours of operation are from 9:00am to 11:30pm, and staff are on site from 8:30am to 12:30am. Service uptake is consistent throughout the day.

Fig 2: Safeworks SCS Total Number of Visits by Time (hourly – based on time of admission)  
February 2018 (note: intake closes at 11:30pm)



### Drug Use and Overdose Prevention and Response

In February 2018, drugs were consumed on site under the supervision of Registered Nurses 2003 times. With each client who uses drugs by injection, RNs are available to provide education on vein care, infection prevention, and injection technique. In February, there was one instance of drug ingestion (swallowing), and 107 instances of intranasal use (snorting).

The most frequently reported drugs used in February were meth/crystal (1026 times) and fentanyl (485 times). Clients may use more than one drug with a single injection/consumption and as such, these counts are not reported as percentages.

Naloxone kits and overdose prevention education are offered to all clients accessing Safeworks SCS, and in February 124 overdose response kits were distributed to clients.

From October 30, 2017 – February 28, 2018, Safeworks staff responded to a total of 119 overdoses.

In February, Safeworks staff responded to 29 overdoses, of which 20 required supplemental oxygen alone; nine overdoses required naloxone and five also required EMS response.

Table 1: Safeworks SCS Summary of Visits and Overdoses by Month

Month	Number of client visits	Number of Overdoses
October 30 – November 30, 2017	990	26
December, 2017	1561	29
January, 2018	2054	35
February, 2018	2281	29
Total	6886	119



### **Client Demographics**

As of February 28, 2018, a total of 469 unique individuals have registered at the Safeworks SCS. Clients who accessed Safeworks SCS for the first time from October 30, 2017 – February 28, 2018 range in age from 16-69 years old, with an average age of 36 years. The majority of clients are male (68%). Of the 328 clients who shared where they live, 70% have no fixed address or stay in a homeless shelter.

### **Wrap-Around Care and Referrals**

In order to provide streamlined access to specialized care, Safeworks SCS has partnerships with both AHS programs and external community partners. In February, Safeworks made 35 referrals, including 14 referrals to social work and 9 referrals to the Opioid Dependency Program (ODP).

### **Program Evaluation**

Safeworks is partnering with the Institute of Health Economics to conduct a comprehensive provincial program evaluation of SCS.

**Prepared By:** Claire O’Gorman, Program Coordinator, Safeworks  
Anmmd Kamruzzaman, Epidemiologist, Surveillance

## Safeworks Monthly Report – March 2018: Supervised Consumption Services

Date: April 11, 2018

### Background

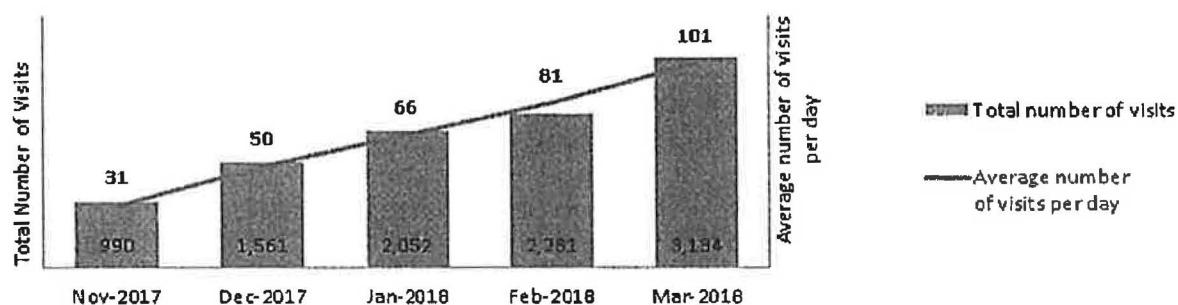
Safeworks Supervised Consumption Services (SCS) launched on October 30, 2017 in a temporary facility at the Sheldon M. Chumir Health Centre with full federal exemption to the Controlled Drugs and Substances Act from Health Canada. On January 15<sup>th</sup>, 2018, the temporary facility closed, and the permanent facility inside the Sheldon M. Chumir Health Centre opened for operations. In March, peer support workers started staff orientation.

### Service Uptake

From October 30, 2017 to March 31, 2018, Safeworks SCS had **10,020 client visits**. In March, the site saw **473 unique individuals** in **3,134 visits**.

Uptake of services increased over time. The average number of visits per day has increased from 11 in the first week of operations (October 30 – November 5), to 106 visits per day averaged from March 26 - 31, 2018.

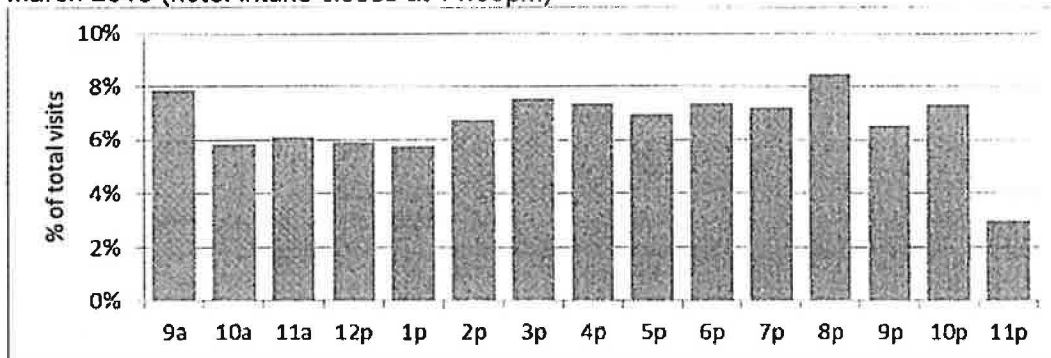
Fig 1: Safeworks SCS Total Number of Visits and Average Number of Visits per Day, by Month



The majority of clients use Safeworks SCS more than once, often within the same day. Not all clients consumed drugs on site; 14% of visits in March reflect harm reduction supply and/or naloxone kit distribution, monitoring post-consumption from use off site, wound care, or social support and referral services.

Safeworks SCS hours of operation are from 9:00am to 11:30pm, and staff are on site from 8:30am to 12:30am. Service uptake is consistent throughout the day.

Fig 2: Safeworks SCS Total Number of Visits by Time (hourly – based on time of admission)  
March 2018 (note: intake closes at 11:30pm)



### Drug Use and Overdose Prevention and Response

In March 2018, drugs were consumed on site under the supervision of Registered Nurses **2,683 times**. With each client who uses drugs by injection, RNs are available to provide education on vein care, infection prevention, and injection technique. In March, there were four instances of drug ingestion (swallowing), and 153 instances of intranasal use (snorting).

The most frequently reported drugs used in March were meth/crystal (1,313 times) and fentanyl (695 times). Clients may use more than one drug with a single injection/consumption and as such, these counts are not reported as percentages.

Naloxone kits and overdose prevention education are offered to all clients accessing Safeworks SCS, and in March, 202 **overdose response kits** were distributed to clients.

From October 30, 2017 – March 31, 2018, Safeworks staff responded to a **total of 186 overdoses**.

In March, Safeworks staff responded to 67 overdoses, of which 40 required supplemental oxygen alone; 27 overdoses required naloxone and four also required EMS response.

Table 1: Safeworks SCS Summary of Visits and Overdoses by Month

Month	Number of client visits	Number of times drugs consumed	Number of Overdoses	Overdoses per number of times drugs consumed
October 30 – November 30, 2017	990	827	26	3.14%
December, 2017	1,561	1,281	29	2.26%
January, 2018	2,054	1,687	35	2.07%
February, 2018	2,281	2,003	29	1.45%
March, 2018	3,134	2,683	67	2.50%
<b>Total</b>	<b>10,020</b>	<b>8,481</b>	<b>186</b>	

### **Wrap-Around Care and Referrals**

In order to provide streamlined access to specialized care, Safeworks SCS has partnerships with both AHS programs and external community partners. In March, Safeworks made 29 referrals, including 14 referrals to social work and 6 referrals to the Opioid Dependency Program (ODP).

Table 2: Safeworks SCS Summary of Referrals by Month

<b>Month</b>	<b>Social Work Referrals</b>	<b>ODP Referrals</b>	<b>Other Referrals</b>	<b>Total Referrals</b>
October 30 – November 30, 2017	12	7	14	33
December, 2017	33	12	10	45
January, 2018	11	12	10	33
February, 2018	14	9	12	35
March, 2018	14	6	9	29
<b>Total</b>	<b>84</b>	<b>46</b>	<b>55</b>	<b>185</b>

### **Program Evaluation**

Safeworks is partnering with the Institute of Health Economics to conduct a comprehensive provincial program evaluation of SCS.

**Prepared By:** Claire O'Gorman, Program Coordinator, Safeworks  
Anmnd Kamruzzaman, Epidemiologist, Surveillance

## Safeworks Monthly Report – April 2018: Supervised Consumption Services

Date: May 10, 2018

### Background

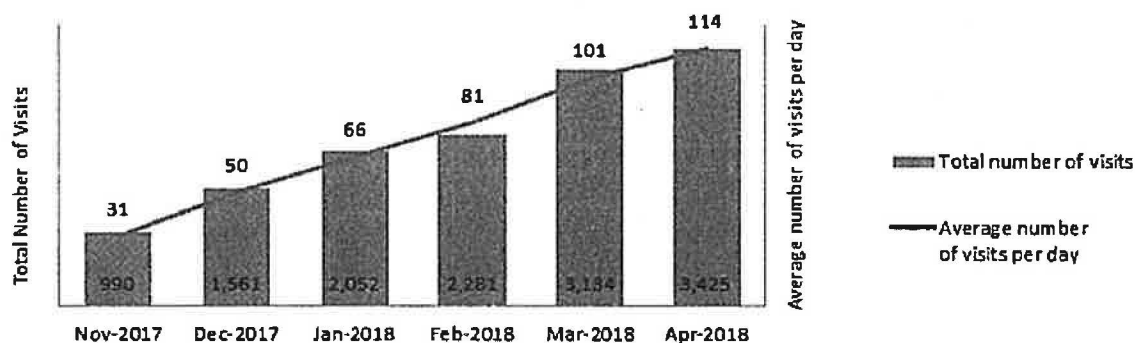
Safeworks Supervised Consumption Services (SCS) launched on October 30<sup>th</sup>, 2017 in a temporary facility at the Sheldon M. Chumir Health Centre with full federal exemption to the Controlled Drugs and Substances Act from Health Canada. On January 15<sup>th</sup>, 2018, the temporary facility closed, and the permanent facility inside the Sheldon M. Chumir Health Centre opened for operations. On April 30<sup>th</sup>, 2018, Safeworks began offering services 24 hours, 7 days a week.

### Service Uptake

From October 30, 2017 to April 30, 2018, Safeworks SCS had 13,445 client visits. In April, the site saw 550 unique individuals in 3,425 visits.

Uptake of services increased over time. The average number of visits per day has increased from 11 in the first week of operations (October 30 – November 5), to 112 visits per day averaged from April 23 – 29, 2018.

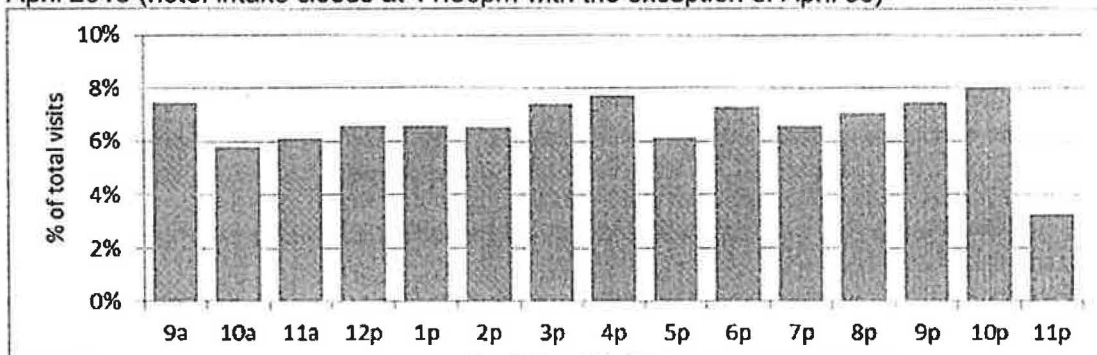
Fig 1: Safeworks SCS Total Number of Visits and Average Number of Visits per Day, by Month



The majority of clients use Safeworks SCS more than once, often within the same day. Not all clients consumed drugs on site; 16% of visits in April reflect harm reduction supply and/or naloxone kit distribution, monitoring post-consumption from use off site, wound care, or social support and referral services.

Until April 30, Safeworks SCS hours of operation were from 9:00am to 11:30pm, and staff were on site from 8:30am to 12:30am. Service uptake is consistent throughout the day.

Fig 2: Safeworks SCS Total Number of Visits by Time (hourly – based on time of admission) April 2018 (note: intake closes at 11:30pm with the exception of April 30)



### Drug Use and Overdose Prevention and Response

In April 2018, drugs were consumed on site under the supervision of Registered Nurses **2,867 times**. With each client who uses drugs by injection, RNs are available to provide education on vein care, infection prevention, and injection technique. In April, there were no instances of drug ingestion (swallowing), and 215 instances of intranasal use (snorting).

The most frequently reported drugs used in April were meth/crystal (1,352 times) and fentanyl (751 times). Clients may use more than one drug with a single injection/consumption and as such, these counts are not reported as percentages.

Naloxone kits and overdose prevention education are offered to all clients accessing Safeworks SCS, and in April, **276 overdose response kits** were distributed to clients.

From October 30, 2017 – April 30, 2018, Safeworks staff responded to a **total of 230 overdoses**.

In April, Safeworks staff responded to 44 overdoses, of which 30 required supplemental oxygen alone; 12 overdoses required naloxone and one also required an EMS response.

Table 1: Safeworks SCS Summary of Visits and Overdoses by Month

Month	Number of client visits	Number of times drugs consumed	Number of Overdoses	Overdoses per number of times drugs consumed
October 30 – November 30, 2017	990	827	26	3.14%
December, 2017	1,561	1,281	29	2.26%
January, 2018	2,054	1,687	35	2.07%
February, 2018	2,281	2,003	29	1.45%
March, 2018	3,134	2,683	67	2.50%
April, 2018	3,425	2,867	44	1.53%
<b>Total</b>	<b>13,445</b>	<b>11,378</b>	<b>230</b>	<b>2.02%</b>

### Wrap-Around Care and Referrals

In order to provide streamlined access to specialized care, Safeworks SCS has partnerships with both AHS programs and external community partners. In April, Safeworks made 23 referrals, including 2 referrals to social work and 10 referrals to the Opioid Dependency Program (ODP).

Table 2: Safeworks SCS Summary of Referrals by Month

Month	Social Work Referrals	ODP Referrals	Other Referrals	Total Referrals
October 30 – November 30, 2017	12	7	14	33
December, 2017	33	12	10	45
January, 2018	11	12	10	33
February, 2018	14	9	12	35
March, 2018	14	6	9	29
April, 2018	2	10	11	23
<b>Total</b>	<b>86</b>	<b>56</b>	<b>66</b>	<b>208</b>

### Program Evaluation

Safeworks is partnering with the Institute of Health Economics to conduct a comprehensive provincial program evaluation of SCS.

**Prepared By:** Claire O’Gorman, Program Coordinator, Safeworks  
Anmmd Kamruzzaman, Epidemiologist, Surveillance

## Safeworks Monthly Report – May 2018: Supervised Consumption Services

Date: June 14, 2018

### Background

Safeworks Supervised Consumption Services (SCS) launched on October 30<sup>th</sup>, 2017 in a temporary facility at the Sheldon M. Chumir Health Centre with full federal exemption to the Controlled Drugs and Substances Act from Health Canada. On January 15<sup>th</sup>, 2018, the temporary facility closed, and the permanent facility inside the Sheldon M. Chumir Health Centre opened for operations. Until April 30, Safeworks SCS hours of operation were from 9:00am to 11:30pm, and staff were on site from 8:30am to 12:30am. On April 30<sup>th</sup>, 2018, Safeworks began offering services 24 hours, 7 days a week.

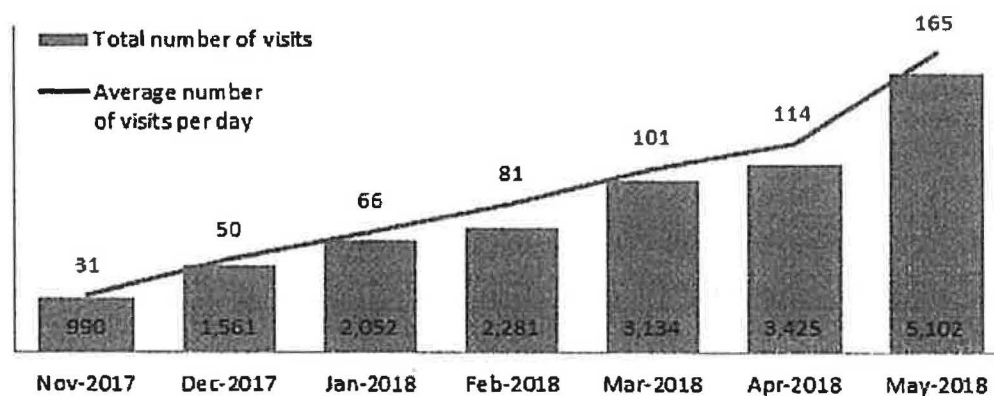
### Service Uptake

From October 30, 2017 to May 31, 2018, Safeworks SCS had **18,547 client visits**. In May, the site saw **771 unique individuals** in **5,102 visits**.

Uptake of services increased over time. The average number of visits per day has increased from 11 in the first week of operations (October 30 – November 5), to 165 visits per day averaged from May 28-31, 2018.

Fig 1: Safeworks SCS Total Number of Visits and Average Number of Visits per Day, by Month

\*Note: Safeworks started offering 24 hour services April 30, 2018

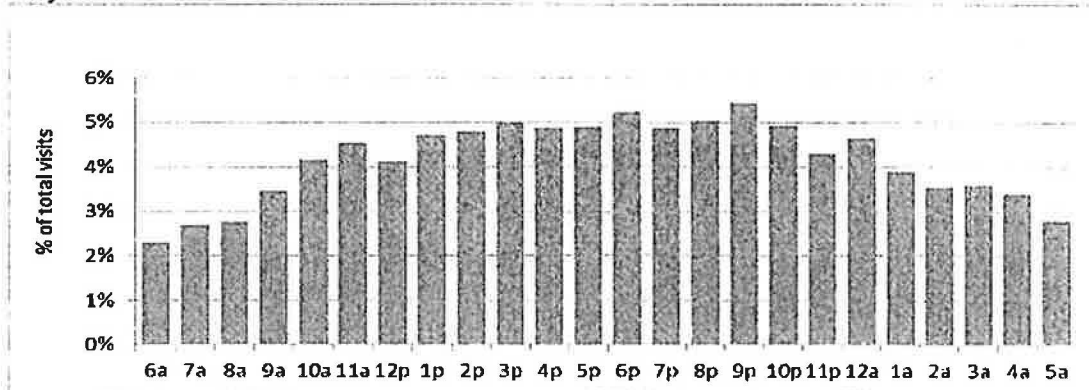


The majority of clients use Safeworks SCS more than once, often within the same day. Not all clients consumed drugs on site; 19% of visits in May reflect harm reduction supply and/or naloxone kit distribution, monitoring post-consumption from use off site, wound care, or social support and referral services.



Service uptake is slightly lower overnight, but remains consistent throughout the day.

Fig 2: Safeworks SCS Total Number of Visits by Time (hourly – based on time of admission)  
May 2018



### Drug Use and Overdose Prevention and Response

In May 2018, drugs were consumed on site under the supervision of Registered Nurses **4,131 times**. With each client who uses drugs by injection, RNs are available to provide education on vein care, infection prevention, and injection technique. In May, there were two instances of drug ingestion (swallowing), and 185 instances of intranasal use (snorting).

The most frequently reported drugs used in May were meth/crystal (1,811 times) and fentanyl (1,237 times). Clients may use more than one drug with a single injection/consumption and as such, these counts are not reported as percentages.

Naloxone kits and overdose prevention education are offered to all clients accessing Safeworks SCS, and in May, **231 overdose response kits** were distributed to clients.

From October 30, 2017 – May 31, 2018, Safeworks staff responded to a **total of 301 overdoses**. In May, Safeworks staff responded to 71 overdoses, of which 29 required supplemental oxygen alone; 39 overdoses required naloxone and three also required an EMS response.

**Column 3 documents the outcomes of Step 4 of the HealthChange® 10 Step Decision Framework: Check RICK and make a decision**

Columns 4 and 5 of the PSMP document outcomes from the following HealthChange® processes *below* the decision line:

**Column 4** Documents the agreed planned time frames for specific actions to be taken by the client within particular categories.

**Column 5** Documents the key specific agreed actions that the client plans to take.  
Options for action can be generated by discussing the relevant condition-specific green 'below the line' boxes in the goal hierarchies.  
**Together, Columns 4 and 5 document the outcomes of Steps 5 to 10 of the HealthChange® 10 Step Decision Framework**

**Column 6** The last column on the PSMP is provided to document any other comments that are relevant to either the above the line or below the line processes

The HealthChange® PSMP is a *person-centred* document that is meant to accompany more system-centric clinical care plans or treatment plans. It is a simple to read and understand document for clients or patients to take home with them to prompt them regarding:

1. *All* of the treatment, lifestyle and referral categories or broad areas relevant to the current consultation in which the client needs to take action *over time* to achieve the best possible health and quality of life outcomes, given their particular health issues and situation.
2. The areas in which they have *agreed* to take action in the *short term* and the specific actions and time frames that they have committed to.

The PSMP also provides valuable information about a person's current *readiness, actions and intentions* that can be shared among that person's health care team.

Recommendations	Priority	Patient's Decision	Action Time Frame	Patient's Agreed Actions	Comments
		Agree Disagree Unsure NA			
		Agree Disagree Unsure NA			
		Agree Disagree Unsure NA			
		Agree Disagree Unsure NA			
Step 2	Step 3	Step 4	Steps 5-10		

## Safeworks Monthly Report – June, 2018: Supervised Consumption Services

Date: July 9, 2018

### Background

Safeworks Supervised Consumption Services (SCS) launched on October 30<sup>th</sup>, 2017 in a temporary facility at the Sheldon M. Chumir Health Centre with full federal exemption to the Controlled Drugs and Substances Act from Health Canada. On January 15<sup>th</sup>, 2018, the temporary facility closed, and the permanent facility inside the Sheldon M. Chumir Health Centre opened for operations. On April 30<sup>th</sup>, 2018, Safeworks began offering services 24 hours, 7 days a week.

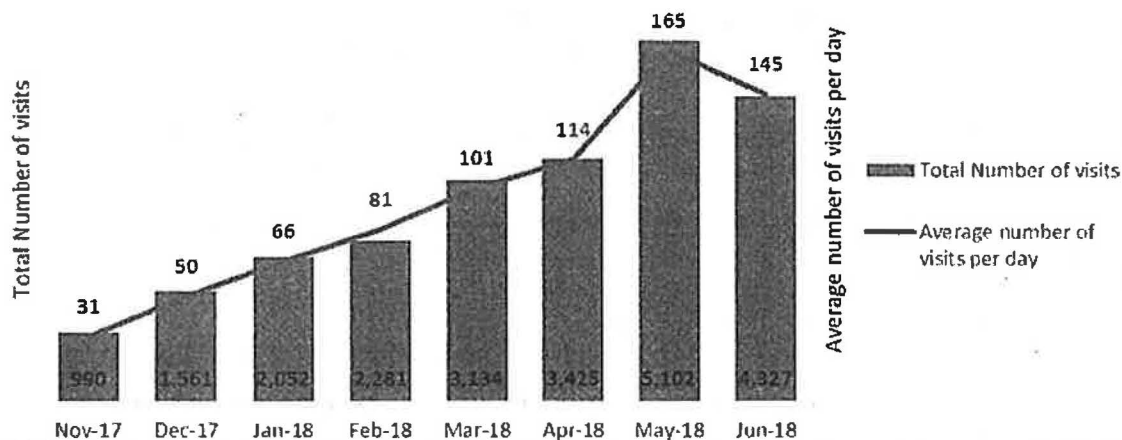
### Service Uptake

From October 30, 2017 to June 30, 2018, Safeworks SCS had **22,872** client visits. In June 2018, the site saw 682 unique individuals in **4,327** visits.

Uptake of services increased over time. The average number of visits per day has increased from 11 in the first week of operations (October 30 – November 5), to 145 visits per day averaged from (June 25 to June 30), 2018.

Fig 1: Safeworks SCS Total Number of Visits and Average Number of Visits per Day, by Month

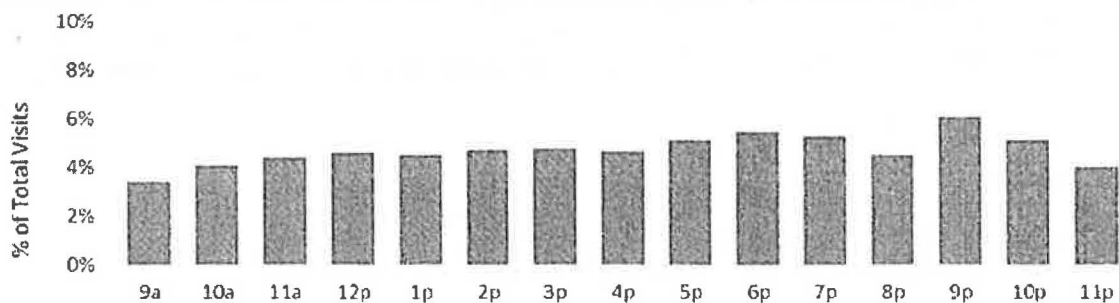
\*Note: Safeworks started offering 24 hour services April 30, 2018



The majority of clients use Safeworks SCS more than once, often within the same day. Not all clients consumed drugs on site; 20% of visits in June reflect harm reduction supply and/or naloxone kit distribution, monitoring post-consumption from use off site, wound care, or social support and referral services.

Safeworks SCS hours of operation are 24 hours per day, 365 days per year. Service uptake is consistent throughout the day.

**Fig 2: Safeworks SCS Total Number of Visits by Time (hourly – based on time of admission) June 2018**



### Drug Use and Overdose Prevention and Response

In June 2018, drugs were consumed on site under the supervision of Registered Nurses **3,545 times**. With each client who uses drugs by injection, RNs are available to provide education on vein care, infection prevention, and injection technique. In June, there were three instances of ingestion (swallowing), and 162 instances of intranasal use (snorting).

The most frequently reported drugs used in June were meth/crystal (1,476 times) and fentanyl (1,135 times). Clients may use more than one drug with a single injection/consumption and as such, these counts are not reported as percentages.

Naloxone kits and overdose prevention education are offered to all clients accessing Safeworks SCS, and in June, **115 overdose response kits** were distributed to clients.

From October 30, 2017 – June 30, 2018, Safeworks staff responded to a **total of 379 overdoses**.

In June, Safeworks staff responded to 78 overdoses, of which 77 required supplemental oxygen alone; 49 overdoses required naloxone and eight also required an EMS response.

Table 1: Safeworks SCS Summary of Visits and Overdoses by Month

Month	Number of client visits	Number of times drugs consumed	Number of Overdoses	Overdoses per number of times drugs consumed
October 30 – November 30, 2017	990	827	26	3.14%
December, 2017	1,561	1,281	29	2.26%
January, 2018	2,054	1,687	35	2.07%
February, 2018	2,281	2,003	29	1.45%
March, 2018	3,134	2,683	67	2.50%
April, 2018	3,425	2,867	44	1.53%
May, 2018	5,102	4,131	71	1.72%
June, 2018	4327	3,545	78	2.20%
<b>Total</b>	<b>13,445</b>	<b>11,378</b>	<b>230</b>	<b>1.99%</b>

#### Wrap-Around Care and Referrals

In order to provide streamlined access to specialized care, Safeworks SCS has partnerships with both AHS programs and external community partners. In June, Safeworks made 11 referrals, including 5 referrals to the Opioid Dependency Program (ODP).

Table 2: Safeworks SCS Summary of Referrals by Month

Month	Social Work Referrals	ODP Referrals	Other Referrals	Total Referrals
October 30 – November 30, 2017	12	7	14	33
December, 2017	33	12	10	45
January, 2018	11	12	10	33
February, 2018	14	9	12	35
March, 2018	14	6	9	29
April, 2018	2	10	11	23
May, 2018	10	12	12	34
June, 2018	0	5	6	11
<b>Total</b>	<b>96</b>	<b>73</b>	<b>84</b>	<b>243</b>

#### Program Evaluation

Safeworks is partnering with the Institute of Health Economics to conduct a comprehensive provincial program evaluation of SCS.

Prepared By: Abhaya Prasad, Team lead Business Intelligence Unit, CDC

## Safeworks Monthly Report – July, 2018: Supervised Consumption Services

Date: August 13, 2018

### Background

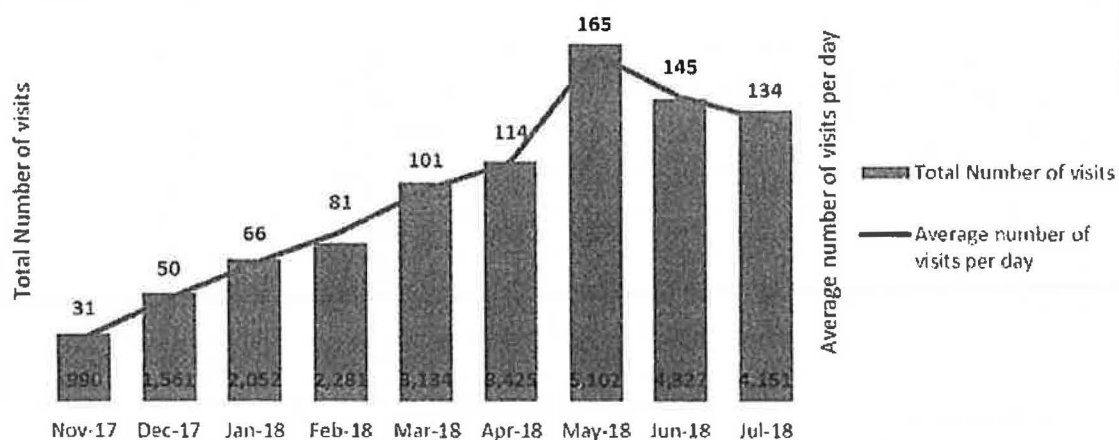
Safeworks Supervised Consumption Services (SCS) launched on October 30<sup>th</sup>, 2017 in a temporary facility at the Sheldon M. Chumir Health Centre with full federal exemption to the Controlled Drugs and Substances Act from Health Canada. On January 15<sup>th</sup>, 2018, the temporary facility closed, and the permanent facility inside the Sheldon M. Chumir Health Centre opened for operations. On April 30<sup>th</sup>, 2018, Safeworks began offering services 24 hours, 7 days a week.

### Service Uptake

From October 30, 2017 to July 31, 2018, Safeworks SCS had **27,023 client visits**. In July 2018, the site saw 665 **unique individuals** in **4,151 visits**.

Uptake of services increased over time. The average number of visits per day has increased from 11 in the first week of operations (October 30 – November 5), to 134 visits per day averaged from (June 30 to July 31), 2018.

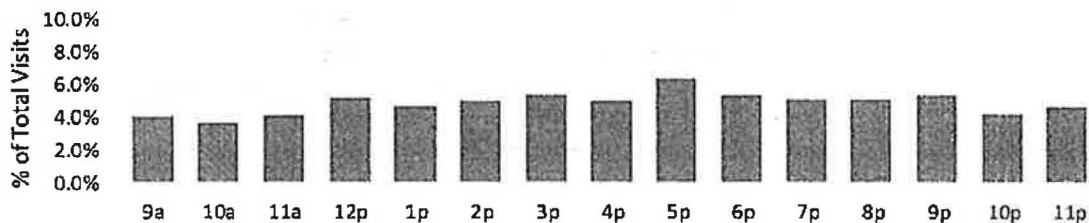
Fig 1: Safeworks SCS Total Number of Visits and Average Number of Visits per Day, by Month



The majority of clients use Safeworks SCS more than once, often within the same day. Not all clients consumed drugs on site; 21% of visits in July reflect harm reduction supply and/or naloxone kit distribution, monitoring post-consumption from use off site, wound care, or social support and referral services.

Safeworks SCS hours of operation are 24 hours per day, 365 days per year. Service uptake is consistent throughout the day.

Fig 2: Safeworks SCS Total Number of Visits by Time (hourly – based on time of admission) July 2018



### Drug Use and Overdose Prevention and Response

In July 2018, drugs were consumed on site under the supervision of Registered Nurses 3,295 times. With each client who uses drugs by injection, RNs are available to provide education on vein care, infection prevention, and injection technique. In July, there were three instances of ingestion (swallowing), and 90 instances of intranasal use (snorting).

The most frequently reported drugs used in July were meth/crystal (1,420 times) and fentanyl (1,053 times). Clients may use more than one drug with a single injection/consumption and as such, these counts are not reported as percentages.

Naloxone kits and overdose prevention education are offered to all clients accessing Safeworks SCS, and in July, 77 overdose response kits were distributed to clients.

From October 30, 2017 – July 31, 2018, Safeworks staff responded to a total of 446 overdoses.

In July 2018, Safeworks staff responded to 67 overdoses, of which 28 required supplemental oxygen alone; 36 overdoses required naloxone and three also required an EMS response.

Table 1: Safeworks SCS Summary of Visits and Overdoses by Month

Month	Number of client visits	Number of times drugs consumed	Number of Overdoses	Overdoses per number of times drugs consumed
October 30 – November 30, 2017	990	827	26	3.14%
December, 2017	1,561	1,281	29	2.26%
January, 2018	2,054	1,687	35	2.07%
February, 2018	2,281	2,003	29	1.45%
March, 2018	3,134	2,683	67	2.50%
April, 2018	3,425	2,867	44	1.53%
May, 2018	5,102	4,131	71	1.72%
June, 2018	4,327	3,545	78	2.20%
July, 2018	4151	3,295	67	2.03%
<b>Total</b>	<b>27,025</b>	<b>22,319</b>	<b>446</b>	<b>2.00%</b>

#### Wrap-Around Care and Referrals

In order to provide streamlined access to specialized care, Safeworks SCS has partnerships with both AHS programs and external community partners. In July, Safeworks made 11 referrals, including 3 referrals to the Opioid Dependency Program (ODP).

Table 2: Safeworks SCS Summary of Referrals by Month

Month	Social Work Referrals	ODP Referrals	Other Referrals	Total Referrals
October 30 – November 30, 2017	12	7	14	33
December, 2017	33	12	10	45
January, 2018	11	12	10	33
February, 2018	14	9	12	35
March, 2018	14	6	9	29
April, 2018	2	10	11	23
May, 2018	10	12	12	34
June, 2018	0	5	6	11
July 2018	1	3	7	11
<b>Total</b>	<b>97</b>	<b>76</b>	<b>91</b>	<b>256</b>

#### Program Evaluation

Safeworks is partnering with the Institute of Health Economics to conduct a comprehensive provincial program evaluation of SCS.

Prepared By: Abhaya Prasad, Team lead Business Intelligence Unit, CDC



## Safeworks Monthly Report – August, 2018: Supervised Consumption Services

**Date:** September 10, 2018

### Background

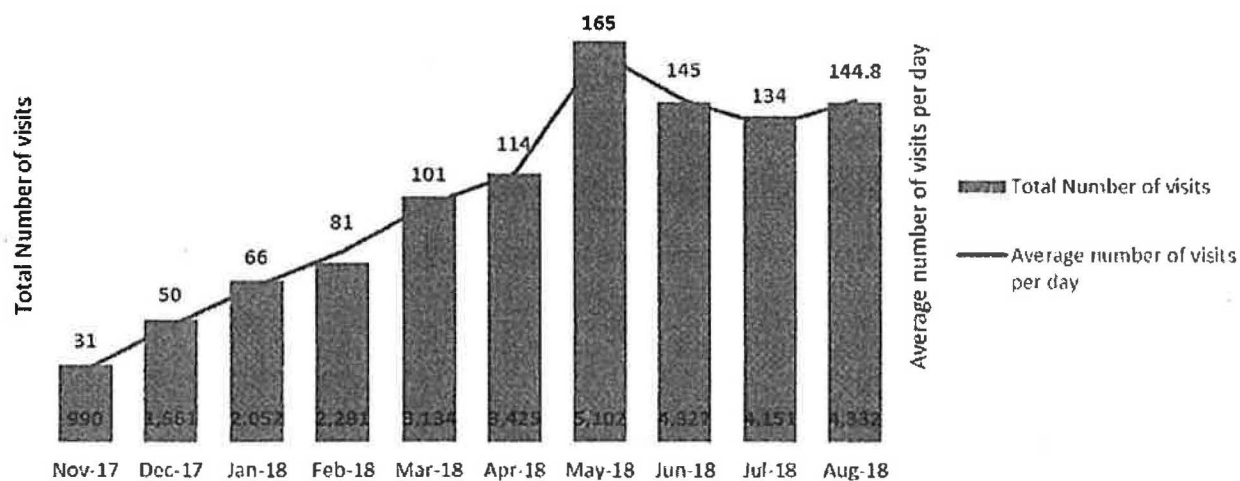
Safeworks Supervised Consumption Services (SCS) launched on October 30<sup>th</sup>, 2017 in a temporary facility at the Sheldon M. Chumir Health Centre with full federal exemption to the Controlled Drugs and Substances Act from Health Canada. On January 15<sup>th</sup>, 2018, the temporary facility closed, and the permanent facility inside the Sheldon M. Chumir Health Centre opened for operations. On April 30<sup>th</sup>, 2018, Safeworks began offering services 24 hours, 7 days a week.

### Service Uptake

From October 30, 2017 to August 31, 2018, Safeworks SCS had **31,355 client visits**. In August 2018, the site saw 700 unique individuals in **4,332 visits**.

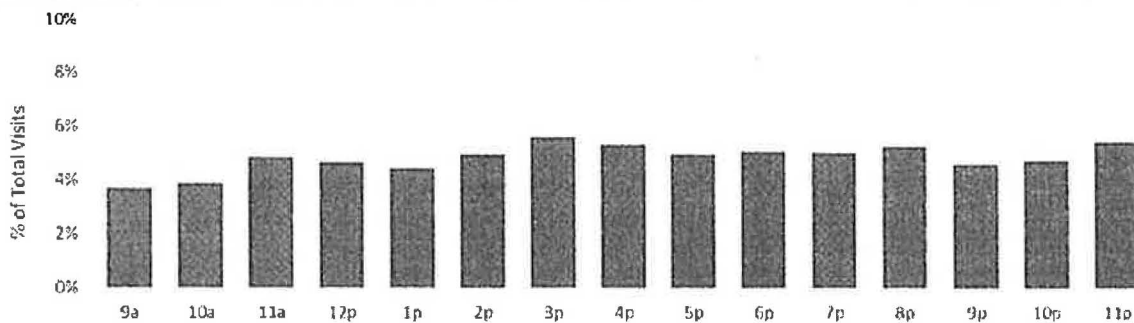
Uptake of services increased over time. The average number of visits per day has increased from 11 in the first week of operations (October 30 – November 5), to 145 visits per day averaged from (August 1 to August 31), 2018.

**Fig 1: Safeworks SCS Total Number of Visits and Average Number of Visits per Day, by Month**



Safeworks SCS hours of operation are 24 hours per day, 365 days per year. Service uptake is consistent throughout the day.

Fig 2: Safeworks SCS Total Number of Visits by Time (hourly – based on time of admission) August 2018



### Drug Use and Overdose Prevention and Response

In August 2018, drugs were consumed on site under the supervision of Registered Nurses **3,571** times. With each client who uses drugs by injection, RNs are available to provide education on vein care, infection prevention, and injection technique. In July, there were zero instances of ingestion (swallowing), and 103 instances of intranasal use (snorting).

The most frequently reported drugs used in August were meth/crystal (1,662 times) and fentanyl (1,186 times). Clients may use more than one drug with a single injection/consumption and as such, these counts are not reported as percentages.

Naloxone kits and overdose prevention education are offered to all clients accessing Safeworks SCS, and in August, **245 overdose response kits** were distributed to clients.

From October 30, 2017 – August 31, 2018, Safeworks staff responded to a **total of 505 overdoses**.

In August, Safeworks staff responded to 59 overdoses, of which 55 required supplemental oxygen alone; 31 overdoses required naloxone and three also required an EMS response.

Table 1: Safeworks SCS Summary of Visits and Overdoses by Month

Month	Number of client visits	Number of times drugs consumed	Number of Overdoses	Overdoses per number of times drugs consumed
October 30 – November 30, 2017	990	827	26	3.14%
December, 2017	1,561	1,281	29	2.26%
January, 2018	2,052	1,687	35	2.07%
February, 2018	2,281	2,003	29	1.45%
March, 2018	3,134	2,683	67	2.50%
April, 2018	3,425	2,867	44	1.53%
May, 2018	5,102	4,131	71	1.72%
June, 2018	4,327	3,545	78	2.20%
July, 2018	4151	3,295	67	2.03%
August, 2018	4332	3,571	59	1.65%
<b>Total</b>	<b>31355</b>	<b>25890</b>	<b>505</b>	<b>1.95%</b>

### Wrap-Around Care and Referrals

In order to provide streamlined access to specialized care, Safeworks SCS has partnerships with both AHS programs and external community partners. In August, Safeworks made 8 referrals, including 3 referrals to the Opioid Dependency Program (ODP).

Table 2: Safeworks SCS Summary of Referrals by Month

Month	Social Work Referrals	ODP Referrals	Other Referrals	Total Referrals
October 30 – November 30, 2017	12	7	14	33
December, 2017	33	12	10	45
January, 2018	11	12	10	33
February, 2018	14	9	12	35
March, 2018	14	6	9	29
April, 2018	2	10	11	23
May, 2018	10	12	12	34
June, 2018	0	5	6	11
July, 2018	1	3	7	11
August, 2018	0	2	6	8
<b>Total</b>	<b>97</b>	<b>78</b>	<b>97</b>	<b>262</b>

## **Program Evaluation**

Safeworks is partnering with the Institute of Health Economics to conduct a provincial program evaluation of SCS.

**Prepared By:** Abhaya Prasad, Team lead Business Intelligence Unit, CDC

## Safeworks Monthly Report – September 2018: Supervised Consumption Services

Date: October 15, 2018

### Background

Safeworks Supervised Consumption Services (SCS) launched on October 30<sup>th</sup>, 2017 in a temporary facility at the Sheldon M. Chumir Health Centre with full federal exemption to the Controlled Drugs and Substances Act from Health Canada. On January 15<sup>th</sup>, 2018, the temporary facility closed, and the permanent facility inside the Sheldon M. Chumir Health Centre opened for operations. On April 30<sup>th</sup>, 2018, Safeworks began offering services 24 hours, 7 days a week.

### Service Uptake

From October 30, 2017 to September 30, 2018, Safeworks SCS had **36,420 client visits**. In September 2018, the site saw **757 unique individuals** in **5,065 visits**.

Uptake of services increased over time. The average number of visits per day has increased from 11 in the first week of operations (October 30 – November 5), to 163 visits per day averaged from (September 1 to September 30), 2018.

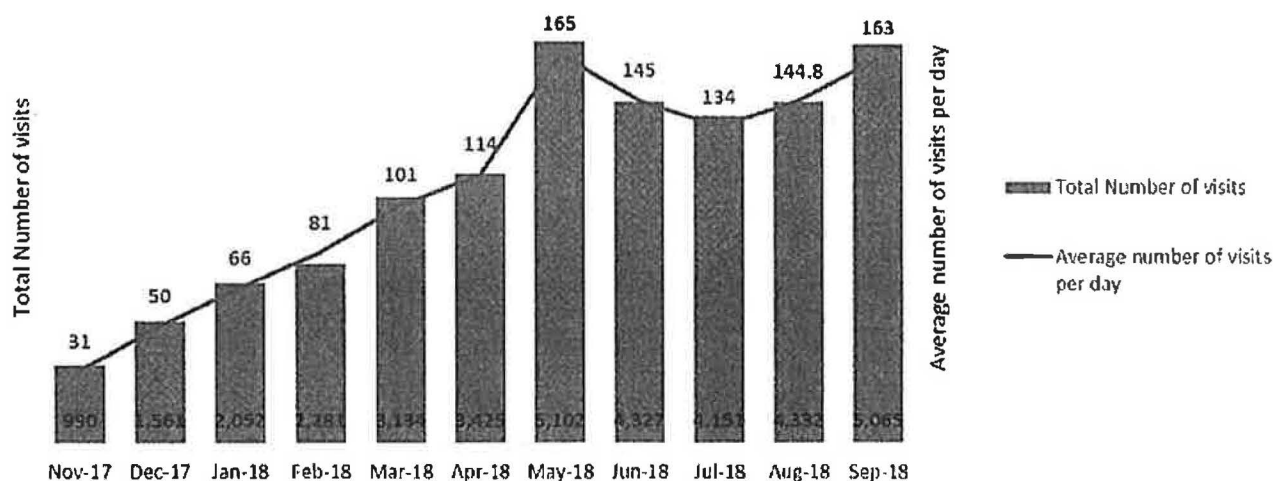
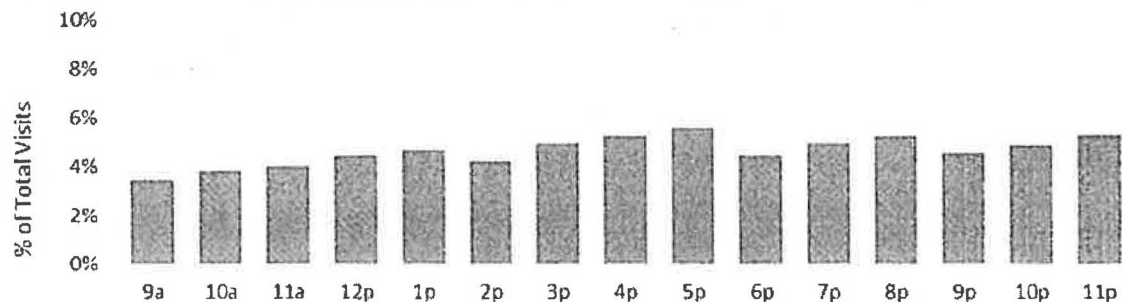


Fig 1: Safeworks SCS Total Number of Visits and Average Number of Visits per Day, by Month

The majority of clients use Safeworks SCS more than once, often within the same day. Not all clients consumed drugs on site; 21.9% of visits in September reflect harm reduction supply and/or naloxone kit distribution, monitoring post-consumption from use off site, wound care, or social support and referral services.

Safeworks SCS hours of operation are 24 hours per day, 365 days per year. Service uptake is consistent throughout the day.

Fig 2: Safeworks SCS Total Number of Visits by Time (hourly – based on time of admission) August 2018



### Drug Use and Overdose Prevention and Response

In September 2018, drugs were consumed on site under the supervision of Registered Nurses **4,162 times**. With each client who uses drugs by injection, RNs are available to provide education on vein care, infection prevention, and injection technique. In September, there were four instances of ingestion (swallowing), and 141 instances of intranasal use (snorting).

The most frequently reported drugs used in September were meth/crystal (1,824 times) and fentanyl (1,454 times). Clients may use more than one drug with a single injection/consumption and as such, these counts are not reported as percentages.

Naloxone kits and overdose prevention education are offered to all clients accessing Safeworks SCS, and in September, **291 overdose response kits** were distributed to clients.

From October 30, 2017 – September 30, 2018, Safeworks staff responded to a **total of 589 overdoses**.

In August, Safeworks staff responded to **89 overdoses**, of which 78 required supplemental oxygen alone; 41 overdoses required naloxone and five also required an EMS response.

Table 1: Safeworks SCS Summary of Visits and Overdoses by Month

Month	Number of client visits	Number of times drugs consumed	Number of Overdoses	Overdoses per number of times drugs consumed
October 30 – November 30, 2017	990	827	26	3.14%
December, 2017	1,561	1,281	29	2.26%
January, 2018	2,052	1,687	35	2.07%
February, 2018	2,281	2,003	29	1.45%
March, 2018	3,134	2,683	67	2.50%
April, 2018	3,425	2,867	44	1.53%
May, 2018	5,102	4,131	71	1.72%
June, 2018	4,327	3,545	78	2.20%
July, 2018	4151	3,295	67	2.03%
August, 2018	4332	3,571	59	1.65%
September, 2018	5065	4,162	89	2.14%
<b>Total</b>	<b>36420</b>	<b>30052</b>	<b>594</b>	<b>1.98%</b>

### Wrap-Around Care and Referrals

In order to provide streamlined access to specialized care, Safeworks SCS has partnerships with both AHS programs and external community partners. In September, Safeworks made 17 referrals, including 3 referrals to the Opioid Dependency Program (ODP).

Table 2: Safeworks SCS Summary of Referrals by Month

Month	Social Work Referrals	ODP Referrals	Other Referrals	Total Referrals
October 30 – November 30, 2017	12	7	14	33
December, 2017	33	12	10	45
January, 2018	11	12	10	33
February, 2018	14	9	12	35
March, 2018	14	6	9	29
April, 2018	2	10	11	23
May, 2018	10	12	12	34
June, 2018	0	5	6	11
July, 2018	1	3	7	11
August, 2018	0	2	6	8
September	1	3	13	17
<b>Total</b>	<b>97</b>	<b>78</b>	<b>97</b>	<b>262</b>

### **Program Evaluation**

Safeworks is partnering with the Institute of Health Economics to conduct a comprehensive provincial program evaluation of SCS.



## Safeworks Monthly Report – October 2018: Supervised Consumption Services

Date: November 10, 2018

### Background

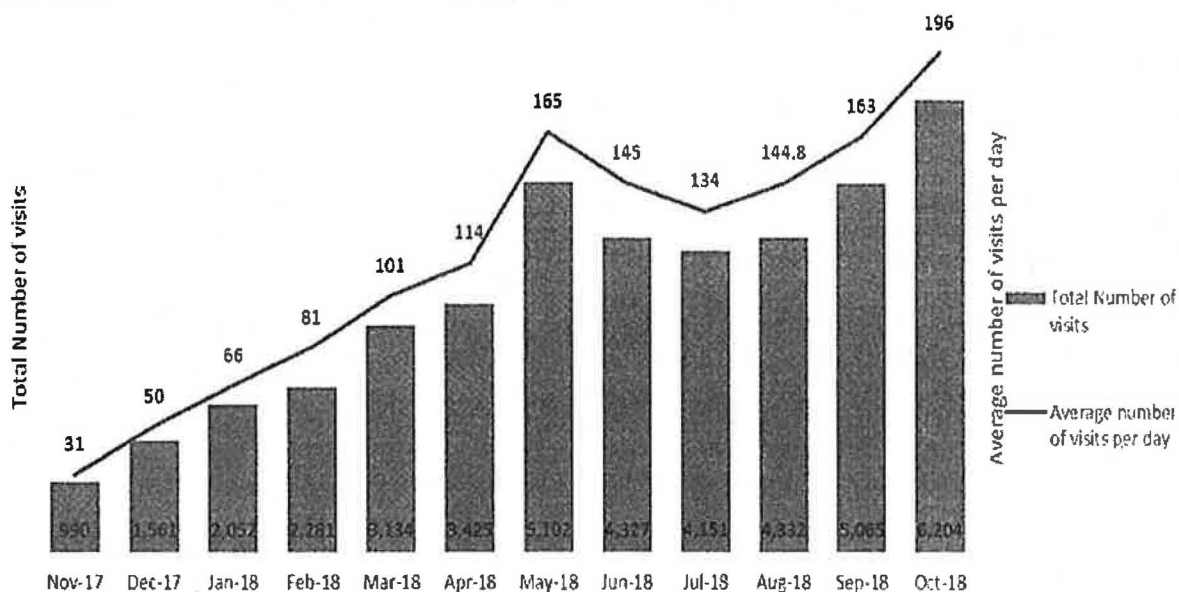
Safeworks Supervised Consumption Services (SCS) launched on October 30<sup>th</sup>, 2017 in a temporary facility at the Sheldon M. Chumir Health Centre with a federal exemption to the Controlled Drugs and Substances Act from Health Canada. On January 15<sup>th</sup>, 2018, the temporary facility closed, and the permanent facility inside the Sheldon M. Chumir Health Centre opened for operations. On April 30<sup>th</sup>, 2018, Safeworks began offering services 24 hours, 7 days a week.

### Service Uptake

From October 30, 2017 to October 30, 2018, Safeworks SCS had **42,626 client visits**. In October 2018, the site saw **886 unique individuals** in **6,204 visits**.

Uptake of services increased over time. The average number of visits per day has increased from 11 in the first week of operations (October 30 – November 5), to **196 visits per day** averaged from (October 1 to October 31), 2018.

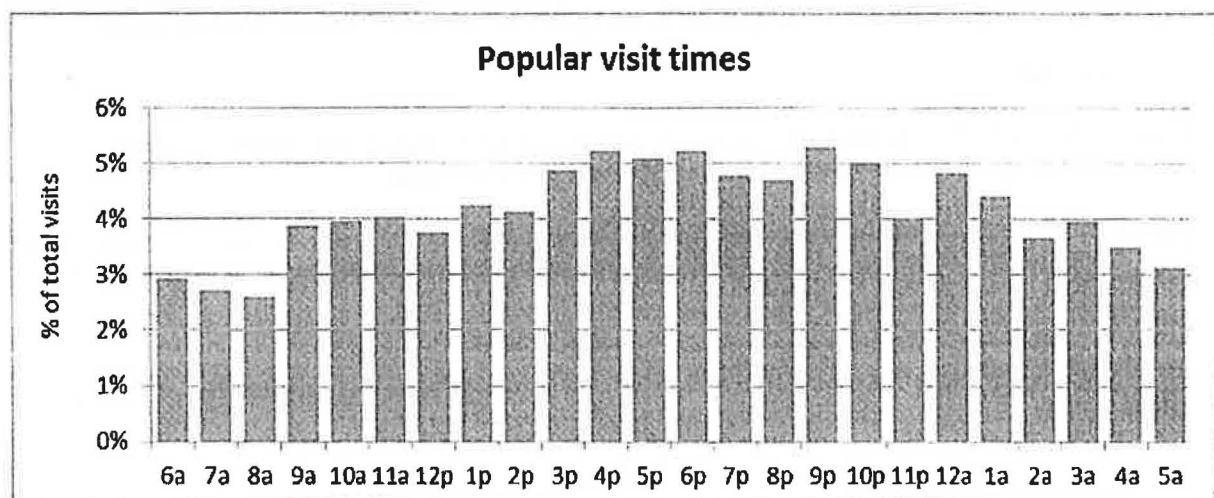
**Fig 1: Safeworks SCS Total Number of Visits and Average Number of Visits per Day, by Month**



The majority of clients use Safeworks SCS more than once, often within the same day. Not all clients consumed drugs on site; 16.4% of visits in October reflect harm reduction supply and/or naloxone kit distribution, monitoring post-consumption from use off site, wound care, or social support and referral services.

Safeworks SCS hours of operation are 24 hours per day, 365 days per year. Service uptake is consistent throughout the day.

**Fig 2: Safeworks SCS Total Number of Visits by Time (hourly – based on time of admission) October 2018**



### Drug Use and Overdose Prevention and Response

In October 2018, drugs were consumed on site under the supervision of Registered Nurses (RNs) **4,664 times**. With each client who uses drugs by injection, RNs are available to provide education on vein care, infection prevention, and injection technique. In October, there were two instances of ingestion (swallowing), and 152 instances of intranasal use (snorting).

The most frequently reported drugs used in October were meth/crystal (2,128 times) and fentanyl (1,692 times). Clients may use more than one drug with a single injection/consumption and as such, these counts are not reported as percentages.

Naloxone kits and overdose prevention education are offered to all clients accessing Safeworks SCS, and in October, **93 overdose response kits** were distributed to clients.

From October 30, 2017 – October 31 2018, Safeworks staff responded to a **total of 657 overdoses**.

In October, Safeworks staff responded to 63 overdoses, of which 58 required supplemental oxygen alone; 35 overdoses required naloxone and four also required an EMS response.

**Table 1: Safeworks SCS Summary of Visits and Overdoses by Month**

Month	Number of client visits	Number of times drugs consumed	Number of Overdoses	Overdoses per number of times drugs consumed
October 30 – November 30, 2017	990	827	26	3.14%
December, 2017	1,561	1,281	29	2.26%
January, 2018	2,054	1,687	35	2.07%
February, 2018	2,281	2,003	29	1.45%
March, 2018	3,134	2,683	67	2.50%
April, 2018	3,425	2,867	44	1.53%
May, 2018	5,102	4,131	71	1.72%
June, 2018	4,327	3,545	78	2.20%
July, 2018	4151	3,295	67	2.03%
August, 2018	4332	3,571	59	1.65%
September, 2018	5065	4,162	89	2.14%
October, 2018	6,204	4,664	63	1.35%
<b>Total</b>	<b>42,626</b>	<b>34,716</b>	<b>657</b>	<b>1.89%</b>

### Wrap-Around Care and Referrals

In order to provide streamlined access to specialized care, Safeworks SCS has partnerships with both AHS programs and external community partners. In October, Safeworks made 19 referrals, including 4 referrals to the Opioid Dependency Program (ODP).

**Table 2: Safeworks SCS Summary of Referrals by Month**

Month	Social Work Referrals	ODP Referrals	Other Referrals <sup>1</sup>	Total Referrals
October 30 – November 30, 2017	12	7	14	33
December, 2017	33	12	10	45
January, 2018	11	12	10	33
February, 2018	14	9	12	35
March, 2018	14	6	9	29
April, 2018	2	10	11	23
May, 2018	10	12	12	34
June, 2018	0	5	6	11
July, 2018	1	3	7	11

<sup>1</sup> Housing, medical, other service providers.

August, 2018	0	2	6	8
September, 2018	1	3	13	17
October , 2018	0	4	15	19
<b>Total</b>	<b>98</b>	<b>85</b>	<b>125</b>	<b>298</b>

### **Program Evaluation**

Safeworks is partnering with the Institute of Health Economics to conduct a provincial program evaluation of SCS.

## Safeworks Monthly Report – November, 2018: Supervised Consumption Services

**Date:** December 10, 2018

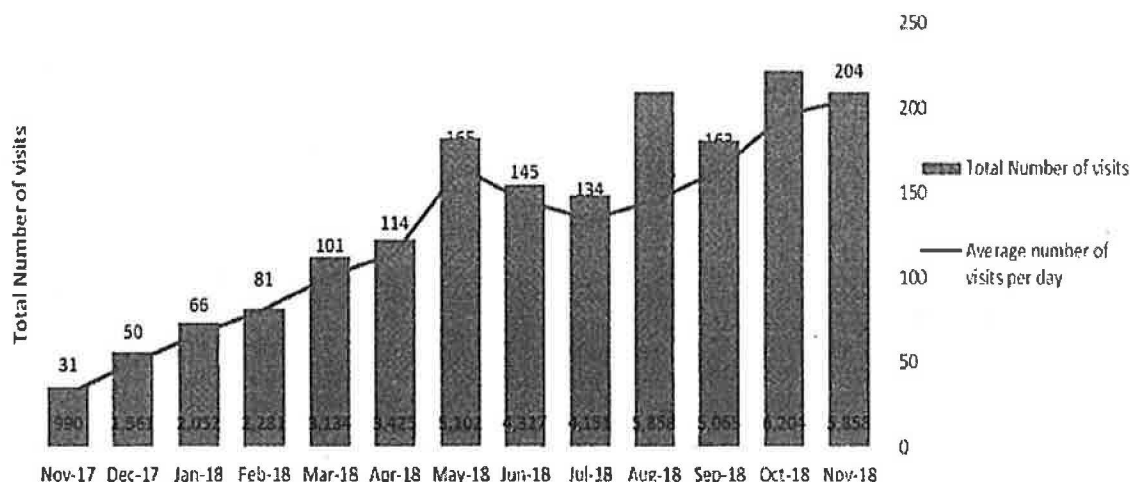
### Background

Safeworks Supervised Consumption Services (SCS) launched on October 30<sup>th</sup>, 2017 in a temporary facility at the Sheldon M. Chumir Health Centre with a federal exemption to the Controlled Drugs and Substances Act from Health Canada. On January 15<sup>th</sup>, 2018, the temporary facility closed, and the permanent facility inside the Sheldon M. Chumir Health Centre opened for operations. On April 30, 2018, Safeworks began offering services 24 hours, 7 days a week.

### Service Uptake

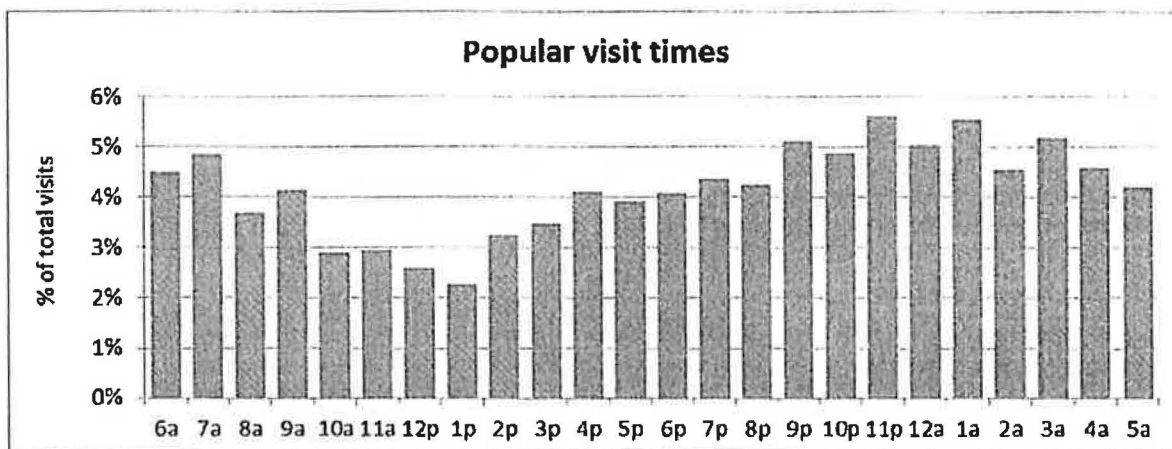
From October 30, 2017 to November 30, 2018, Safeworks SCS had **48,484 client visits**. In November 2018, the site saw **836 unique individuals** in **5,858 visits**.

Uptake of services increased over time. The average number of visits per day has increased from 11 in the first week of operations (October 30 – November 5), to 204 visits per day averaged from (November 1 to November 30), 2018.



Safeworks SCS hours of operation are 24 hours per day, 365 days per year. Service uptake is consistent throughout the day.

Fig 2: Safeworks SCS Total Number of Visits by Time (hourly – based on time of admission) August 2018



### Drug Use and Overdose Prevention and Response

In November 2018, drugs were consumed on site under the supervision of Registered Nurses (RNs) **4,745 times**. With each client who uses drugs by injection, RNs are available to provide education on vein care, infection prevention, and injection technique. In November, there was one instance of ingestion (swallowing), and 185 instances of intranasal use (snorting).

The most frequently reported drugs used in November were meth/crystal (2,125 times) and fentanyl (1,646 times). Clients may use more than one drug with a single injection/consumption and as such, these counts are not reported as percentages.

Naloxone kits and overdose prevention education are offered to all clients accessing Safeworks SCS, and in November, **63 overdose response kits** were distributed to clients.

From October 30, 2017 – November 30, 2018, Safeworks staff responded to a **total of 750 overdoses**.

In November, Safeworks staff responded to **62 overdoses**, 61 required supplemental oxygen; 27 overdoses required naloxone and six also required an EMS response.

Table 1: Safeworks SCS Summary of Visits and Overdoses by Month

Month	Number of client visits	Number of times drugs consumed	Number of Overdoses	Overdoses per number of times drugs consumed
October 30 – November 30, 2017	990	827	26	3.14%
December, 2017	1,561	1,281	29	2.26%
January, 2018	2,054	1,687	35	2.07%
February, 2018	2,281	2,003	29	1.45%
March, 2018	3,134	2,683	67	2.50%
April, 2018	3,425	2,867	44	1.53%
May, 2018	5,102	4,131	71	1.72%
June, 2018	4,327	3,545	78	2.20%
July, 2018	4151	3,295	67	2.03%
August, 2018	4332	3,571	59	1.65%
September, 2018	5065	4,162	89	2.14%
October, 2018	6,204	4,664	63	1.35%
November, 2018	5,858	4,745	62	1.29%
<b>Total</b>	<b>48,484</b>	<b>39,461</b>	<b>718</b>	<b>1.82%</b>

### Wrap-Around Care and Referrals

In order to provide streamlined access to specialized care, the Safeworks SCS has partnerships with both AHS programs and external community partners. In November, Safeworks made 38 referrals, including 8 referrals to the Opioid Dependency Program (ODP).

Table 2: Safeworks SCS Summary of Referrals by Month

Month	Social Work Referrals	ODP Referrals	Other Referrals	Total Referrals
October 30 – November 30, 2017	12	7	14	33
December, 2017	33	12	10	45
January, 2018	11	12	10	33
February, 2018	14	9	12	35
March, 2018	14	6	9	29
April, 2018	2	10	11	23
May, 2018	10	12	12	34
June, 2018	0	5	6	11

July, 2018	1	3	7	11
August, 2018	0	2	6	8
September,2018	1	3	13	17
October , 2018	0	4	15	19
November, 2018	4	8	26	38
<b>Total</b>	<b>102</b>	<b>93</b>	<b>151</b>	<b>336</b>

### **Program Evaluation**

Safeworks is partnering with the Institute of Health Economics to conduct a provincial program evaluation of SCS.



## Safeworks Monthly Report – December 2018: Supervised Consumption Services

**Date:** January 10, 2019

### Background

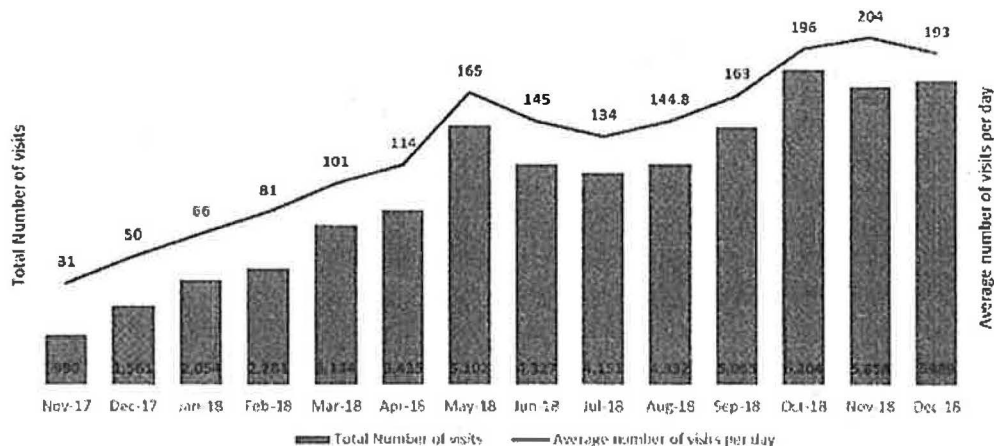
Safeworks Supervised Consumption Services (SCS) launched on October 30, 2017 in a temporary facility at the Sheldon M. Chumir Health Centre with a federal exemption to the Controlled Drugs and Substances Act from Health Canada. On January 15, 2018, the temporary facility closed, and the permanent facility inside the Sheldon M. Chumir Health Centre opened for operations. On April 30<sup>th</sup>, 2018, Safeworks began offering services 24 hours, 7 days a week.

### Service Uptake

From October 30, 2017 to December 31, 2018, Safeworks SCS had **54,473 client visits**. In December 2018, the site saw **867 unique individuals** in **5,858 visits**.

Uptake of services increased over time. The average number of visits per day has increased from 11 in the first week of operations (October 30 – November 5), to 193 visits per day averaged from December 1 to December 31, 2018.

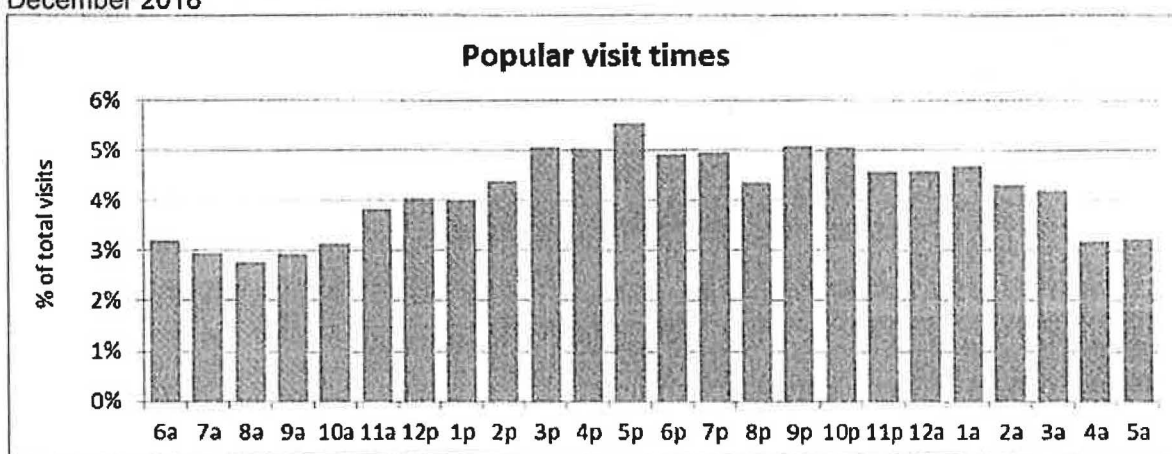
**Fig 1: Safeworks SCS Total Number of Visits and Average Number of Visits per Day, by Month**



The majority of clients use Safeworks SCS more than once, often within the same day. Not all clients consumed drugs on site; 14.2% of visits in December reflect harm reduction supply and/or naloxone kit distribution, monitoring post-consumption from use off site, wound care, or meeting with a social worker.

Safeworks SCS hours of operation are 24 hours per day, 365 days per year. Service uptake is consistent throughout the day.

Fig 2: Safeworks SCS Total Number of Visits by Time (hourly – based on time of admission) December 2018



### Drug Use and Overdose Prevention and Response

In December 2018, drugs were consumed on site under the supervision of Registered Nurses (RNs) or Paramedics **5,033 times**. With each client who uses drugs by injection, RNs and Paramedics are available to provide education on vein care, infection prevention, and injection technique. In December, there were three instances of ingestion (swallowing), and 163 instances of intranasal use (snorting).

The most frequently reported drugs used in December were meth/crystal (2,541 times) and fentanyl (1,606 times). Clients may use more than one drug with a single injection/consumption and as such, these counts are not reported as percentages.

Naloxone kits and overdose prevention education are offered to all clients accessing Safeworks SCS, and in December, **309\* overdose response kits** (*please note, number is higher than the previous month due to clarity in reporting*) were distributed to clients.

From October 30, 2017 – December 31, 2018, Safeworks staff responded to a **total of 802 overdoses**.

In December, Safeworks staff responded to **52 overdoses**, 49 required supplemental oxygen; 20 overdoses required naloxone and 4 also required an EMS response.

Table 1: Safeworks SCS Summary of Visits and Overdoses by Month

Month	Number of client visits	Number of times drugs consumed	Number of Overdoses	Overdoses per number of times drugs consumed
October 30 – November 30, 2017	990	827	26	3.14%
December, 2017	1,561	1,281	29	2.26%
January, 2018	2,054	1,687	35	2.07%
February, 2018	2,281	2,003	29	1.45%
March, 2018	3,134	2,683	67	2.50%
April, 2018	3,425	2,867	44	1.53%
May, 2018	5,102	4,131	71	1.72%
June, 2018	4,327	3,545	78	2.20%
July, 2018	4151	3,295	67	2.03%
August, 2018	4332	3,571	59	1.65%
September, 2018	5065	4,162	89	2.14%
October, 2018	6,204	4,664	63	1.35%
November, 2018	5,858	4,745	62	1.29%
December, 2018	5989	5,033	52	1.03%
<b>Total</b>	<b>54473</b>	<b>44,494</b>	<b>802</b>	<b>1.73%</b>

### Wrap-Around Care and Referrals

In order to provide streamlined access to specialized care, Safeworks SCS has partnerships with both AHS programs and external community partners. In December, Safeworks made 71 referrals, including 4 referrals to the Opioid Dependency Program (ODP).

Table 2: Safeworks SCS Summary of Referrals by Month

Month	Social Work Referrals	ODP Referrals	Other Referrals	Total Referrals
October 30 – November 30, 2017	12	7	14	33
December, 2017	33	12	10	55
January, 2018	11	12	10	33
February, 2018	14	9	12	35
March, 2018	14	6	9	29
April, 2018	2	10	11	23
May, 2018	10	12	12	34
June, 2018	0	5	6	11
July, 2018	1	3	7	11

August, 2018	0	2	6	8
September, 2018	1	3	13	17
October , 2018	0	4	15	19
November, 2018	4	8	26	38
December, 2018	10	4	57	71
<b>Total</b>	<b>112</b>	<b>97</b>	<b>208</b>	<b>417</b>

### Program Evaluation

Safeworks is partnering with the Institute of Health Economics to conduct a provincial program evaluation of SCS.

Leader Rounding is being done regularly in the site. Comments from clients include:

"While I am in the site I won't be harmed. Staff pretty good, will stand up for me. Protective Services help in making me feel safe. I had a problem with a guy who assaulted me, following me, waited outside. Protective Services made sure I was safe".

"Safety. Feeling welcomed with open arms. Confidentiality. Comfortable. The warmth of staff. They are easy going, non-judgemental, not biased, open-minded, good listeners, friendly. They really listen. I can be real with staff".

"Grateful there is a place like this and have access to it".

"Being safe and alive. Here you have a chance for a revival. Don't have much of a chance out there".

Clients have also commented on the quality of staff and state they are very pleased to see peer support working in the SCSS.