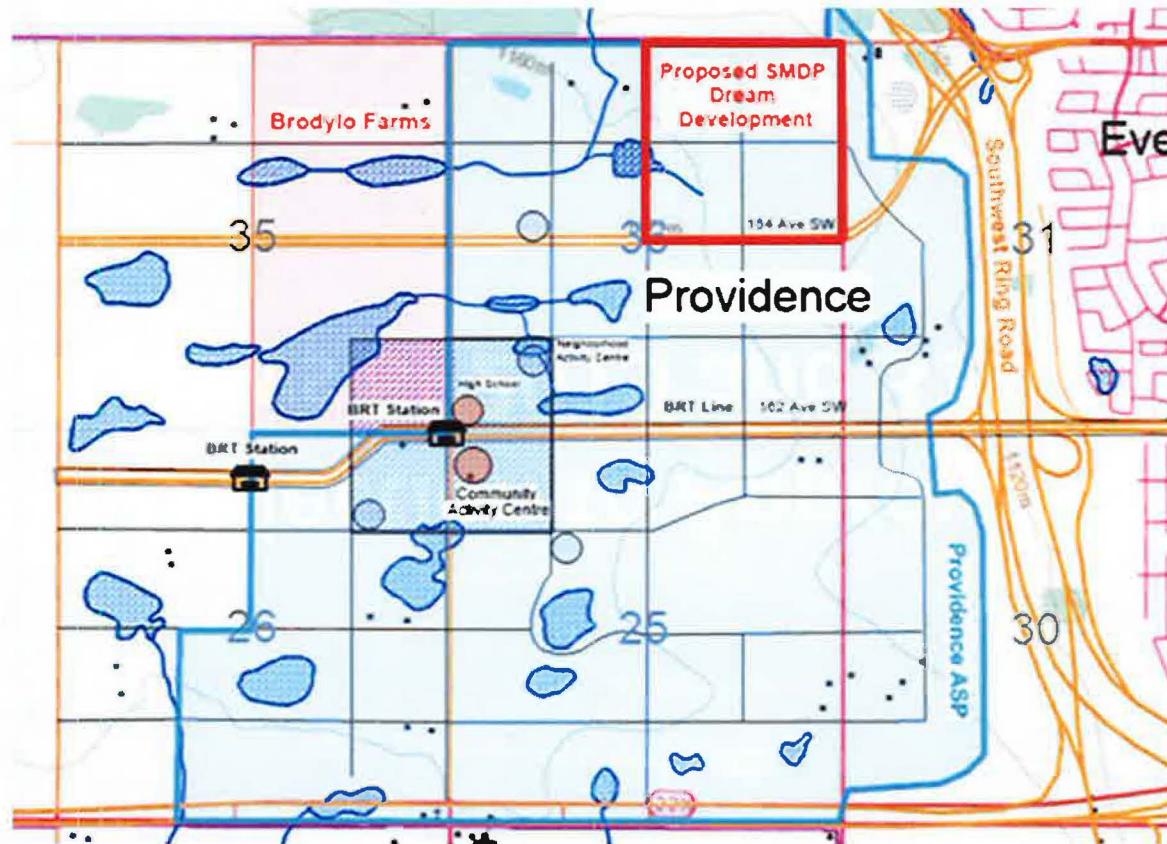


A photograph of a wetland area. In the foreground, there is a body of water with some reeds and grasses. In the middle ground, there is a small island or peninsula with more vegetation. The background shows a line of trees under a blue sky with white clouds.

Providence Area Development

**Objection to Approval of
Bylaws 8P2019 and 31D2019**



- **We Object to the approval of these bylaws that will allow a development to flood Brodylo Farms land**
- **This development fails to accommodate or preserve the pre-existing and interconnected drainage network which will result in the planned and extensive flooding of Brodylo Farms upstream lands.**

Brodylo-Qualico-Dream Northern Drainage Course

- There are a multitude of Applicable Acts that apply to the blockage or impoundment of naturally occurring drainage features and have an impact on upstream water bodies.
- These include the Municipal Government Act, Water Act, Municipal Plan, Public Lands Act and Stormwater Planning and Design Manual Guidelines.

COC: Ephemeral drainage through the site is not discussed in the report.

EXP: There are no ephemeral drainage courses in the Study area.

COC: Ephemeral streams have been identified through the site. Please indicate and label the ephemeral streams including their 6.0m setback under existing condition, and discuss the mechanism why they are removed in the proposed condition in the report

EXP: Please refer to Figure attached under Appendix 7 and Biophysical Impact Assessment for the Proposed Dream Providence Development Project NE 36-22-2 W5M by Ghostpine Environmental Services Ltd., April 2018. It is noted that Drainages and/or watercourses are not present within the local study area under Section 4.2.3.2 in the BIA.

Curesha

From: Ron Sparrow [<mailto:rsparrow@traceassociates.ca>]

Sent: Friday, April 27, 2018 1:58 PM

To: Moodley, Curesha <Curesha.Moodley@calgary.ca>; Sudyk, Marta <Marta.Sudyk@calgary.ca>

Subject: [EXT] Providence Lands - LOC2017-0378 - wetlands and surface water

Hi Curesha,

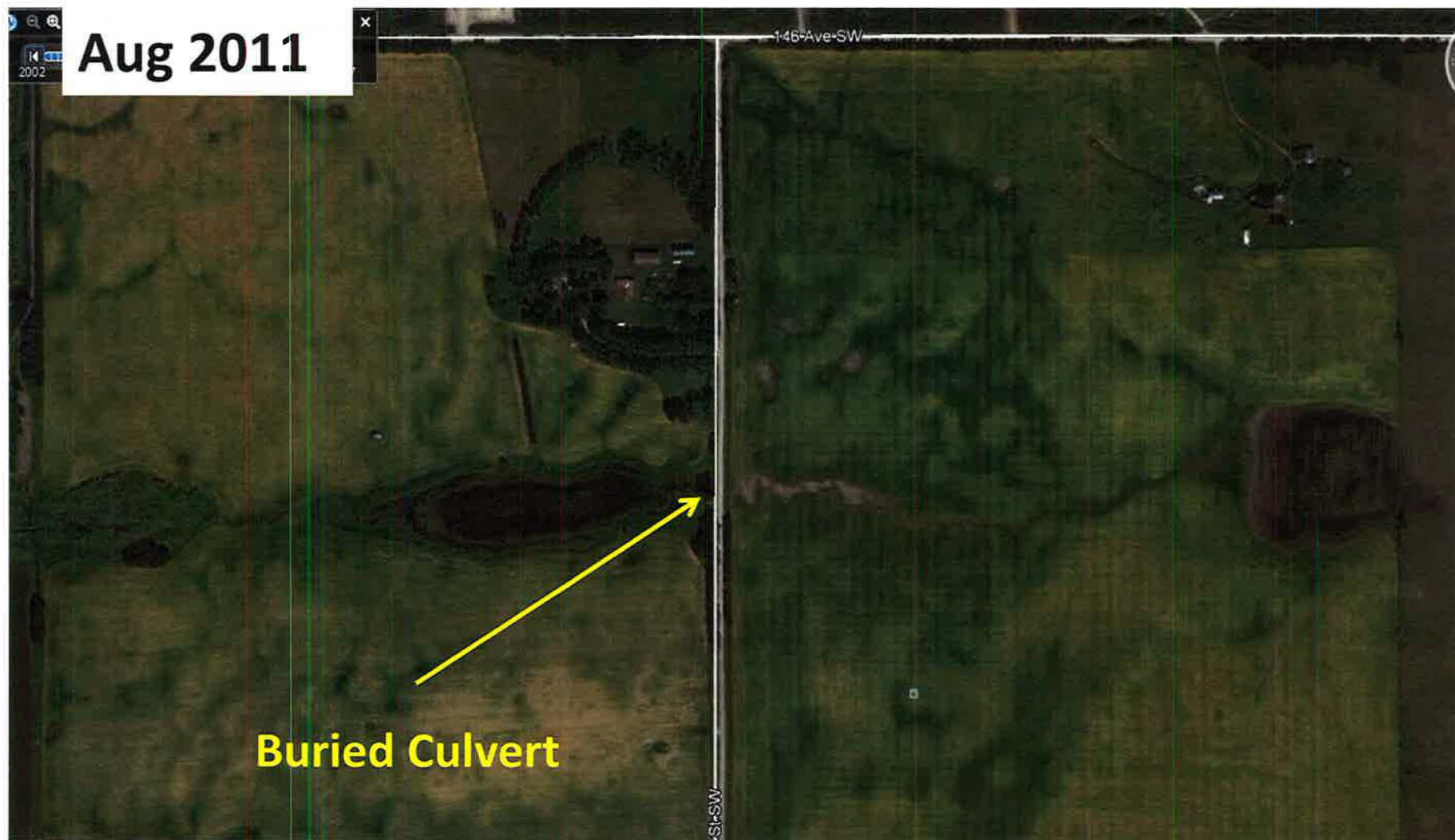
The discussion presented below relates to NW-36-022-02 W5M ("Providence Lands"). The following response is to the question you presented 'will removing the wetland and drainage impact adjacent lands'?

- The north/south road (53 Street SW) acts as a barrier to flow from a wetland on NE-35-022-02 W5M, west of the Providence lands (see attached Figure 2). Water leaving the wetland flows east to 53 Street SW and then north along the west side of 53 Street SW where it goes into a culvert under 146 Avenue SW. The flow is drawn on the attached Figure 2.
- The Canada Base Map (Can Vec is the mapping by Natural Resources Canada) shows a watercourse leaving the wetland on NE-3-022-02 W5M, west of the Providence lands crossing 53 Street SW and flowing north through the Providence lands. Based on field assessment and detailed contour data the watercourse is not as mapped by the Canada Base Map. The attached Figure 2 shows the ephemeral watercourse in its correct location and the detailed contours (1 metre interval) as support.
- The wetland complexes in SW-36-022-02 W5M are in a different drainage basin than wetlands in NW-36-022-02 W5M (the quarter section to the south) and the wetlands in the two quarter sections are not connected (there are no watercourses or low area between the two areas).
- The wetlands in NW-36-022-02 W5M are fed by snow melt and heavy rain/storm events and are not connected to the ground water,

2





-
- The Providence Master Drainage Plan (MDP) is in progress and is expected to be approved by the City of Calgary in mid to late 2018 (subject to change). A Staged Master Drainage Plan is required after the MDP is approved. The Staged Master Drainage Plan is the tool to address water management as it relates to the potential loss of water storage capacity through the infilling of wetlands on the Providence lands and the management of water coming on to the Providence lands from adjacent lands. At present there is no obvious water from NE-35-022-02 W5M feeding onto the Providence Lands.
 - The catchment basin is essentially the same as what is the progressing MDP.
 - The two wetlands in NW-36-022-02 W5M are shown on the attached Figure 2. There are no other mapped wetlands.

Please call or email with questions, happy to discuss.

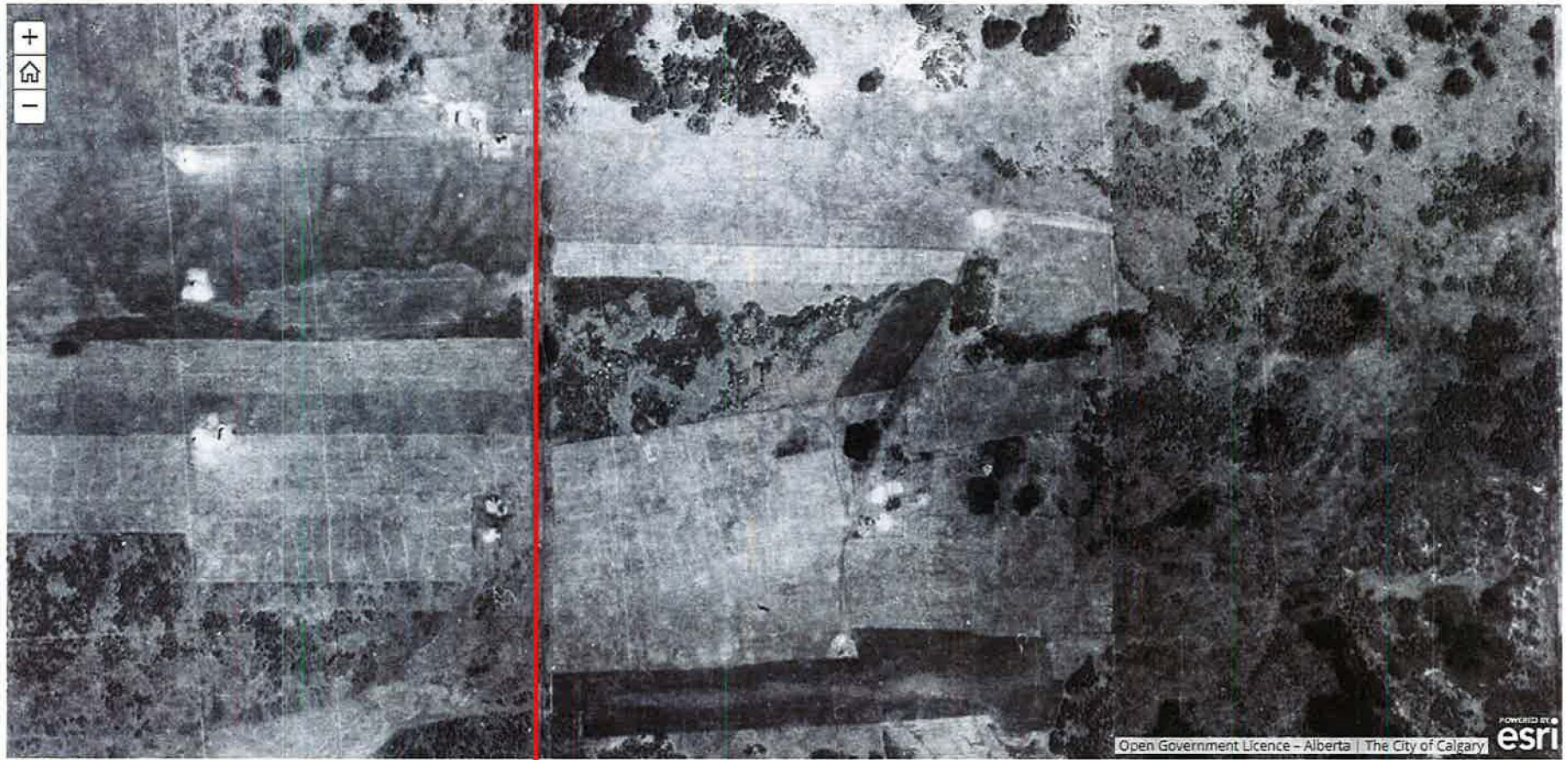


EXP claims there is no connecting drainage between Brodylo through Qualico to Dream parcels. This is clearly not correct as shown. This is also not consistent with all other maps, studies and technical opinions. Please see next slide.

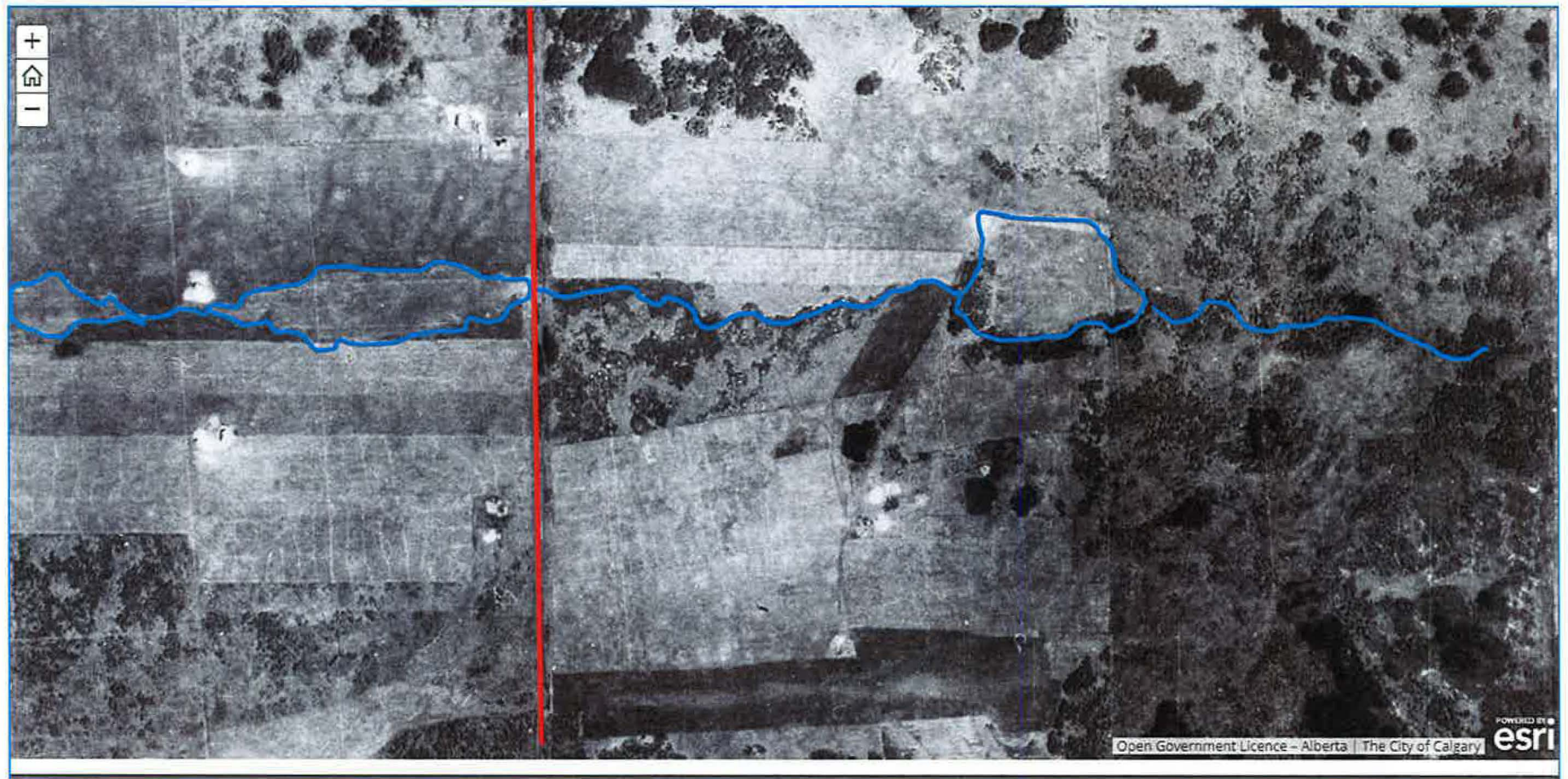
An aerial map showing a drainage catchment boundary. The map is divided into three main sections: Brodylo Farms on the left, Qualico in the center, and Dream on the right. A yellow dashed line runs vertically through the center, separating Brodylo Farms from Qualico. A blue line runs horizontally across the middle, representing a water body or drainage path. A red line follows the boundary of a catchment area, starting from the left, passing through the yellow dashed line, and ending on the right. A yellow arrow points from the text 'EXP Drainage Catchment Boundary' to the red line. Another yellow arrow points from the red line towards the right edge of the map. The map includes a scale bar at the top left indicating a distance of 146 Ave-SW. The map also shows a timeline at the top left with dates 2002, 8/20/2011, and 2017.

-  Stantec 2007 Providence MDP
 CanVec (NRC) CofC, Ecotone 2015, EXP 2015, Ghostpine 2018
 1924 Air photo Drainage, Burgess/Brodylo Farms
 Trace Associates Qualico, W35-22-2W5 2018 WAIR Report

53rd Street



53rd Street





**Thank You For Listening:
Do You Have Any QUESTIONS?**

CITY OF CALGARY
RECEIVED
IN COUNCIL CHAMBER

FEB - 4 2019

ITEM: CPC 2018-1359 8.22
Distribution
CITY CLERK'S DEPARTMENT

182