



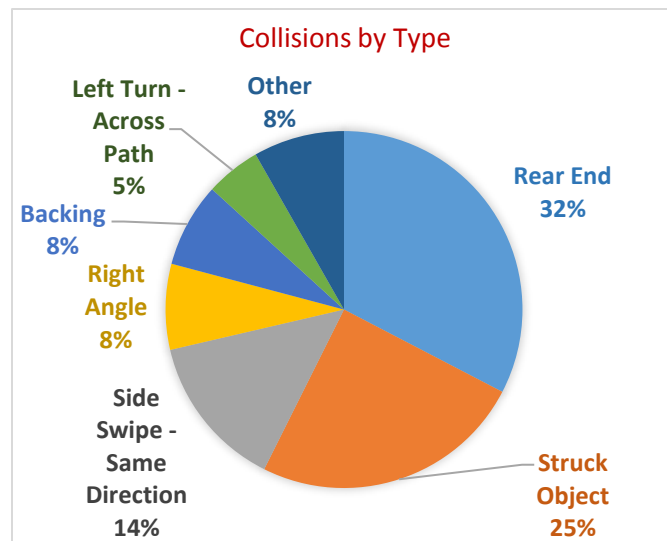
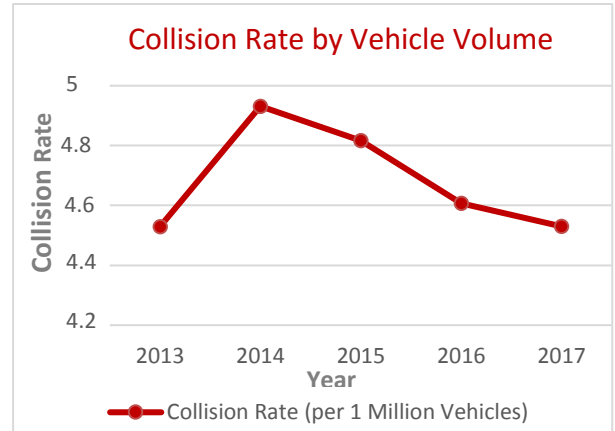
2017 Traffic Collision Summary

Transportation Data and Forecasting

The total number of collisions in Calgary increased by 6% in 2017 compared to 2016. While the number of property damage and injury collisions both show increases, fatal collisions decreased from 26 in 2016 to 11 in 2017. Collision rates per population and registered vehicles increased, though rates by traffic volume decreased when compared with 2016. The collision rate by vehicle volume dropped from a five year high of 4.9 in 2014 to 4.5 collisions per million vehicles in 2017.

The number of pedestrian collisions decreased by 4% in 2017 from 431 to 415. Additionally, the number of bicyclist collisions dropped by 23% from 287 in 2016 to 221 in 2017. The number of motorcyclist collisions decreased significantly by 46% in 2017 and the motorcyclist collision rate per capita decreased 22%.

Despite a sharp decrease in reported collisions at 249 total reported collisions in 2017, Deerfoot TR NE at Memorial DR E remains the intersection with the highest number of reported collisions in Calgary, but its collision rate of 2.74 does not include it in the Top 20 list of high rate locations. In contrast, 48 ST SE at 23 AV SE is the



highest collision rate location at 6.01 collisions per million entering vehicles, with 5 reported collisions in 2017.

Rear End, Struck Object and Side Swipe collisions accounted for nearly three quarters of all reported collisions in Calgary in 2017.

Data Sources

Data used in the 2017 Annual Traffic Collision Summary was exported on May 7th, 2018 from The City of Calgary's eCollisions Traffic Collision database. This database is supplied with collision records from the Calgary Police Service (CPS) via Alberta Transportation's eCollisions Traffic Collision

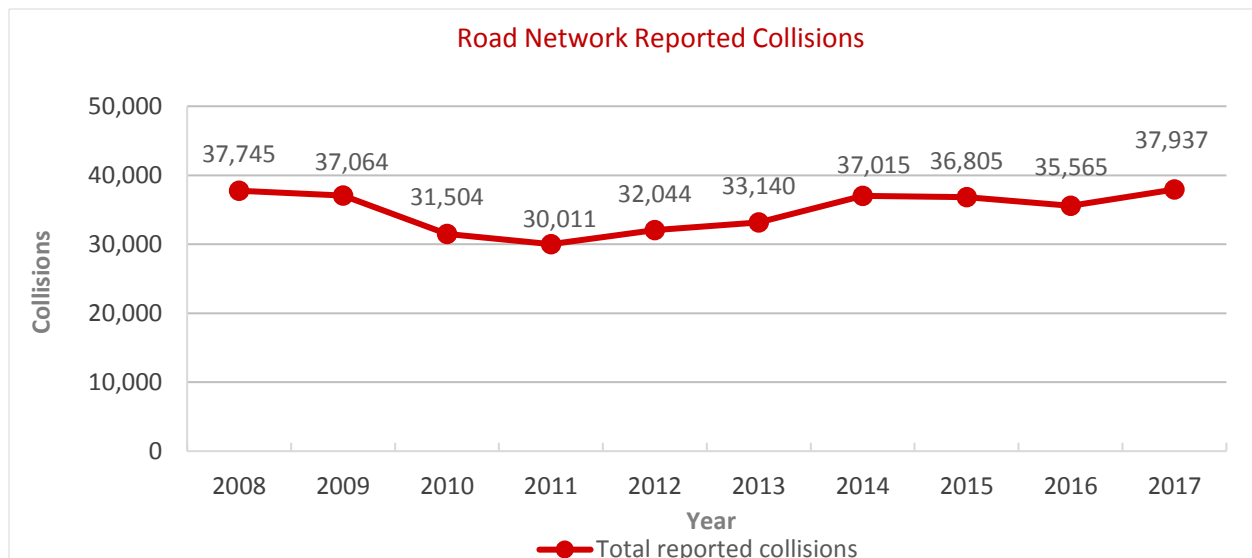
Database. Data represented in this summary are accurate up to May 7th, 2018.

The 2017 Annual Traffic Collision Summary consists of summary statistics associated with motor vehicle collisions within the city limits of Calgary. These summary statistics are used to perform road safety reviews, determine road safety audit locations, and monitor countermeasure and infrastructure performance. Collision data for non-engineering purposes may be acquired by contacting the Calgary Police Service.

Transportation Planning, and Transportation Data and Forecasting releases this annual summary in good faith, however, the City of Calgary provides no warranty, nor accepts any liability arising from any incorrect, incomplete, or misleading information or the improper use of this report.

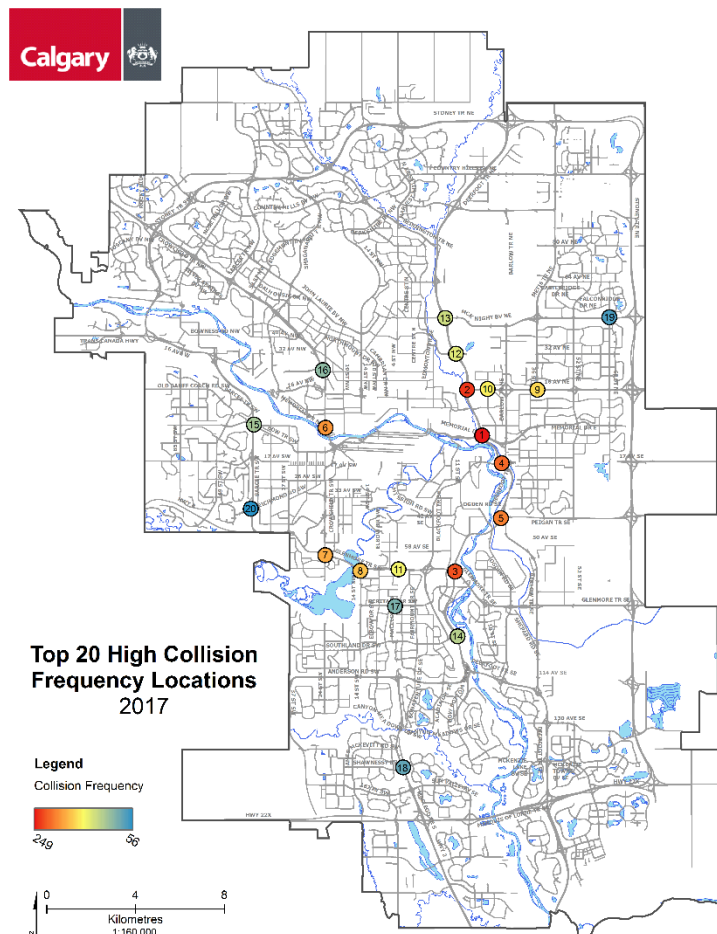
Quick Statistics

Statistic	2016	2017	% Change
Total City-wide Collisions	43,369	46,021	6%
Total Road Network Collisions	35,565	37,937	7%
Fatal Collisions	26	11	-58%
Injury Collisions	2,430	2,646	9%
Property Damage Only Collisions	33,098	35,280	7%
Motor Vehicle Collisions <i>per capita</i> (1,000 pop.)	29	30	3%
City Population	1,235,171	1,246,337	1%
Motor Vehicle Collisions per 1,000 Registered Vehicles	35	38	9%
Registered Vehicles in Calgary	1,007,399	990,144	-2%
Motor Vehicle Collisions per Vehicle Volume (1m vehicles)	4.61	4.53	-2%
Intersection Collisions	22,942	22,501	-2%
Non-Intersection Collisions	12,623	15,463	22%
Pedestrian Collisions	431	415	-4%
Pedestrian Fatal Collisions	10	2	-80%
Pedestrian Injury Collisions	356	341	-4%
Pedestrian Collision Rate <i>per capita</i> (100,000 pop.)	35	33	-6%
Bicyclist Collisions	287	221	-23%
Bicyclist Fatal Collision	0	0	0%
Bicyclist Injury Collisions	179	146	-18%
Bicyclist Collision Rate <i>per capita</i> (100,000 pop.)	23	18	-22%
Motorcyclist Collisions	215	116	-46%
Motorcyclist Fatal Collisions	5	2	-60%
Motorcyclist Injury Collisions	126	67	-47%
Motorcyclist Collision Rate <i>per capita</i> (100,000 pop.)	17	9	-47%



Top 20 Locations by Frequency

Rank	Intersection	Collisions	Daily Volume	Rate (MEV)
1	DEERFOOT TR SE & MEMORIAL DR NE	249	249,000	2.74
2	DEERFOOT TR NE & 16 AV NE	233	223,000	2.86
3	GLENMORE TR SE & DEERFOOT TR SE	175	194,500	2.46
4	DEERFOOT TR SE & 17 AV SE	132	200,000	1.80
5	PEIGAN TR SE & DEERFOOT TR SE	124	156,500	2.17
6	KENSINGTON RD NW & CROWCHILD TR NW	94	93,000	2.77
7	GLENMORE TR SW & CROWCHILD TR SW	94	167,500	1.54
8	GLENMORE TR SW & 14 ST SW	94	171,000	1.50
9	36 ST NE & 16 AV NE	91	41,500	5.96
10	19 ST NE & 16 AV NE	80	91,000	2.40
11	MACLEOD TR SE & GLENMORE TR SE	80	169,000	1.29
12	DEERFOOT TR NE & 32 AV NE	77	189,500	1.11
13	DEERFOOT TR NE & MCKNIGHT BV NE	74	193,000	1.05
14	DEERFOOT TR SE & SOUTHLAND DR SE	73	151,500	1.32
15	BOW TR SW & SARCEE TR SW	72	84,000	2.35
16	24 AV NW & CROWCHILD TR NW	70	88,500	2.16
17	HERITAGE DR SW & MACLEOD TR S	61	71,500	2.34
18	MACLEOD TR S & SHAWNESSY BV SW	57	48,500	3.22
19	68 ST NE & MCKNIGHT BV NE	57	48,500	3.20
20	SARCEE TR SW & RICHMOND RD SW	56	55,500	2.76



Top 20 Locations by Rate

Rank	Intersection	Rate (MEV)	Daily Volume	Collisions
1	48 ST SE & 23 AV SE	6.01	2,000	5
2	36 ST NE & 16 AV NE	5.96	41,500	91
3	BOW TR SW & 10 AV SW	5.57	13,500	28
4	6 AV SW & 4 ST SW	5.25	26,000	50
5	CROWCHILD TR SW & MOUNT ROYAL GA SW	4.47	23,000	38
6	100 AV NE & 19 ST NE	4.42	3,000	5
7	44 ST SE & 16 AV SE	4.27	9,500	15
8	COUNTRY HILLS RD NW & COUNTRY HILLS DR NW	4.24	11,000	17
9	7 AV SE & 4 ST SE	4.19	3,000	5
10	68 ST NE & MCKNIGHT BV NE	4.14	37,500	57
11	44 AV NE & 52 ST NE	3.99	32,000	47
12	52 ST NE & MCKNIGHT BV NE	3.75	54,500	75
13	10 ST SW & 4 AV SW	3.59	8,000	11
14	8 AV SE & 44 ST SE	3.55	16,000	21
15	FALCONRIDGE BV NE & MARTINDALE BV NE	3.44	23,000	29
16	9 ST SW & 15 AV SW	3.44	4,000	5
17	SHAWNESSY BV SE & MACLEOD TR S	3.22	48,500	57
18	80 AV NE & METIS TR NE	3.19	42,500	50
19	CROWFOOT WY NW & NOSE HILL DR NW	3.14	42,500	49
20	ELBOW DR SW & GLENMORE TR SW	3.10	40,500	46

