

## Proposed Direct Control Guidelines

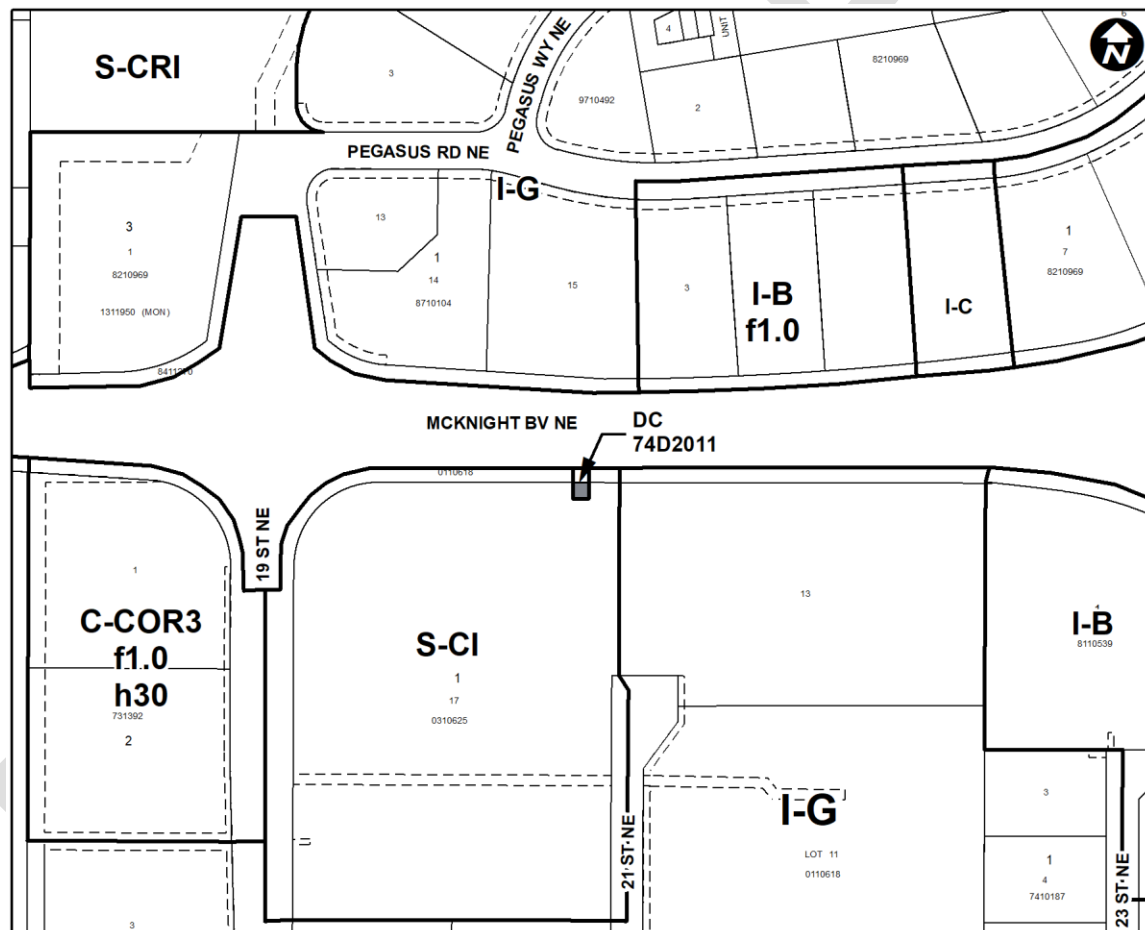
**WHEREAS** it is desirable to amend the Land Use Bylaw Number 1P2007 to change the land use designation of certain lands within the City of Calgary;

**AND WHEREAS** Council has held a public hearing as required by Section 692 of the *Municipal Government Act*, R.S.A. 2000, c.M-26 as amended;

**NOW, THEREFORE, THE COUNCIL OF THE CITY OF CALGARY ENACTS AS FOLLOWS:**

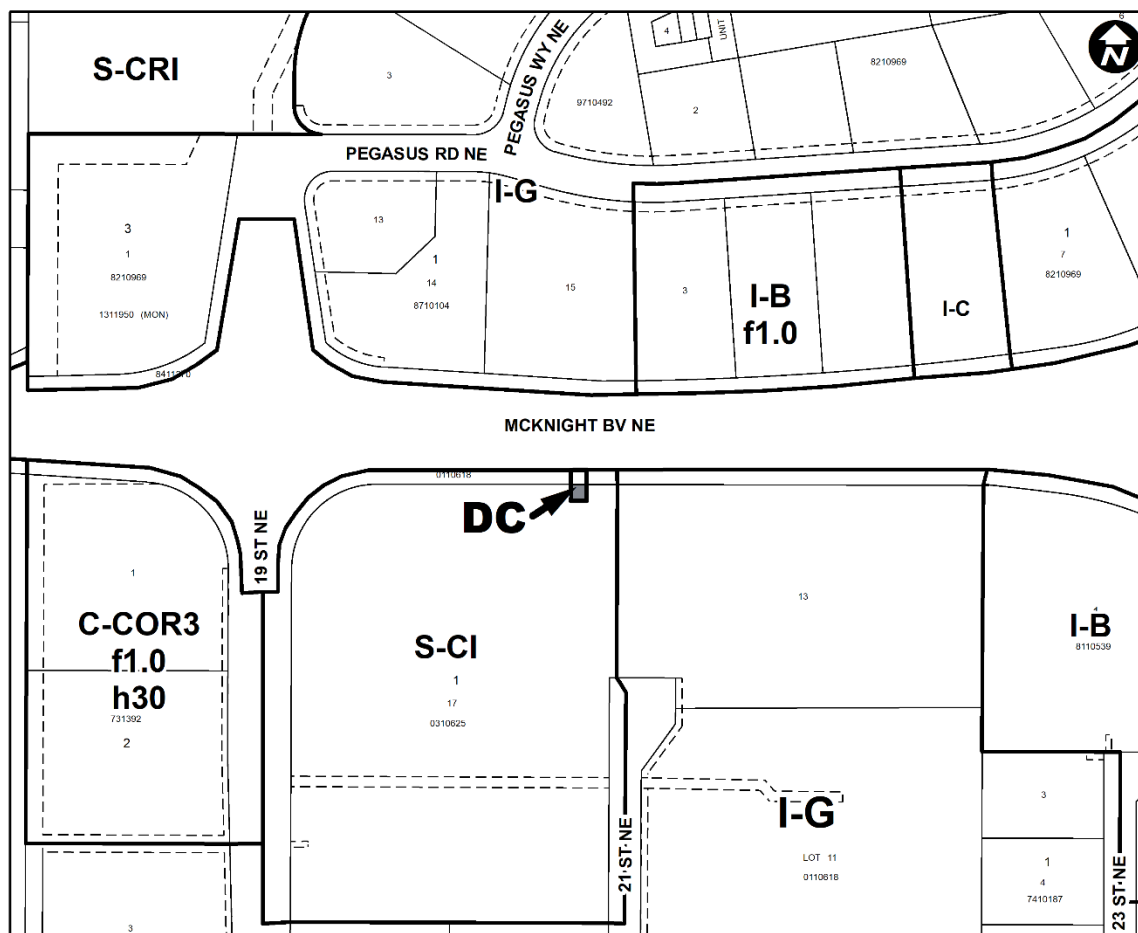
1. The Land Use Bylaw, being Bylaw 1P2007 of the City of Calgary, is hereby amended by deleting that portion of the Land Use District Map shown as shaded on Schedule "A" to this Bylaw and substituting therefor that portion of the Land Use District Map shown as shaded on Schedule "B" to this Bylaw, including any land use designation, or specific land uses and development guidelines contained in the said Schedule "B".

### SCHEDULE A



## Proposed Direct Control Guidelines

### SCHEDULE B



### DIRECT CONTROL DISTRICT

#### Purpose

1 This Direct Control District is intended to:

- (a) accommodate an existing **Third Party Advertising Sign** and **Digital Third Party Advertising Sign**.

#### Compliance with Bylaw 1P2007

2 Unless otherwise specified, the rules and provisions of Parts 1, 2, 3 and 4 of Bylaw 1P2007 apply to this Direct Control District.

#### Reference to Bylaw 1P2007

3 Within this Direct Control District, a reference to a section of Bylaw 1P2007 is deemed to be a reference to the section as amended from time to time.

#### Permitted Uses

4 The **permitted uses** of the Special Purpose – Community Institution (S-CI) District of Bylaw 1P2007 are the **permitted uses** in this Direct Control District.

## Proposed Direct Control Guidelines

### Discretionary Uses

**5** The **discretionary uses** of the Special Purpose – Community Institution (S-CI) District of Bylaw 1P2007 are the **discretionary uses** in this Direct Control District with the addition of:

- (a) **Sign – Class F**; and
- (b) **Sign – Class G**.

### Bylaw 1P2007 District Rules

**6** Unless otherwise specified, the rules of the Special Purpose – Community Institution (S-CI) District of Bylaw 1P2007 apply in this Direct Control District.

### Rules for Sign – Class F and Sign – Class G

- 7**
- (1) Notwithstanding subsections 111(3)(hh) and 115.2(2)(hh) of Bylaw 1P2007, **Sign – Class F** or **Sign – Class G** positioned such that the **copy** is legible from McKnight Boulevard between 19 Street N.E. east to Barlow Trail N.E. may be approved from time to time.
  - (2) A **Sign – Class F** or **Sign – Class G** must not be located within 75.0 metres of any other **Sign – Class F** or **Sign – Class G** facing the same on-coming traffic.
  - (3) A **Sign – Class F** or **Sign – Class G** must not result in more than two (2) freestanding **Sign – Class F** or **Sign – Class G** greater than 4.6 metres in height and 4.5 square metres in area within a 195 metre radius of each other facing the same **street**.
  - (4) Section 115.3(3)(c) of Bylaw 1P2007 does not apply in this Direct Control District.