

Proposed Direct Control Guidelines

Purpose

- 1 This Direct Control District is intended to provide for a multi- residential development as a **permitted use** where it conforms to the plans in Schedule “C”.

Compliance with Bylaw 1P2007

- 2 Unless otherwise specified, the rules and provisions of Parts 1, 2, 3 and 4 of Bylaw 1P2007 apply to this Direct Control District.

Reference to Bylaw 1P2007

- 3 Within this Direct Control District, a reference to a section of Bylaw 1P2007 is deemed to be a reference to the section as amended from time to time.

Defined Uses

- 4 In this Direct Control District:

- (a) “**Permitted Development**” means a **use**:
- (i) that consists of one **main residential building** containing four **units**;
 - (ii) that has **motor vehicle parking stalls**; and
 - (iii) that conforms with the plans attached to this Direct Control District as Schedule “C”.

Permitted Uses

- 5 (1) The **permitted uses** of the Residential – Grade-Oriented Infill (R-CG) District of Bylaw 1P2007 are the **permitted uses** in this Direct Control District.
- (2) The following **uses** are the **permitted uses** in this Direct Control District provided the **development** conforms with the plans attached as Schedule “C” of this Direct Control District:

- (a) **Permitted Development.**

Discretionary Uses

- 6 The **discretionary uses** of the Residential – Grade-Oriented Infill (R-CG) District of Bylaw 1P2007 are the **discretionary uses** in this Direct Control District.

Bylaw 1P2007 District Rules

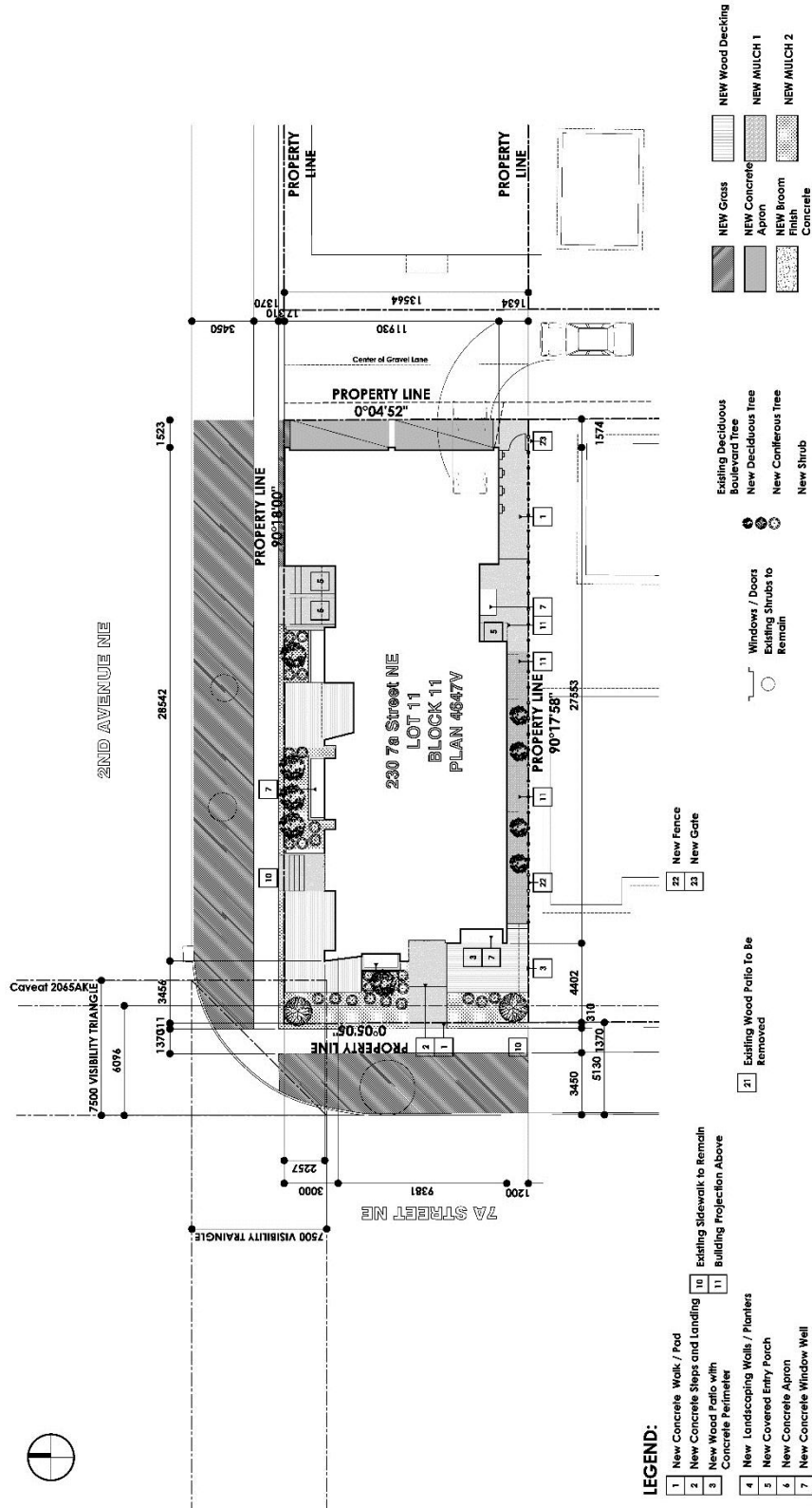
- 7 Unless otherwise specified, the rules of the Residential – Grade-Oriented Infill (R-CG) District of Bylaw 1P2007 apply in this Direct Control District.

Development Plans for Permitted Development

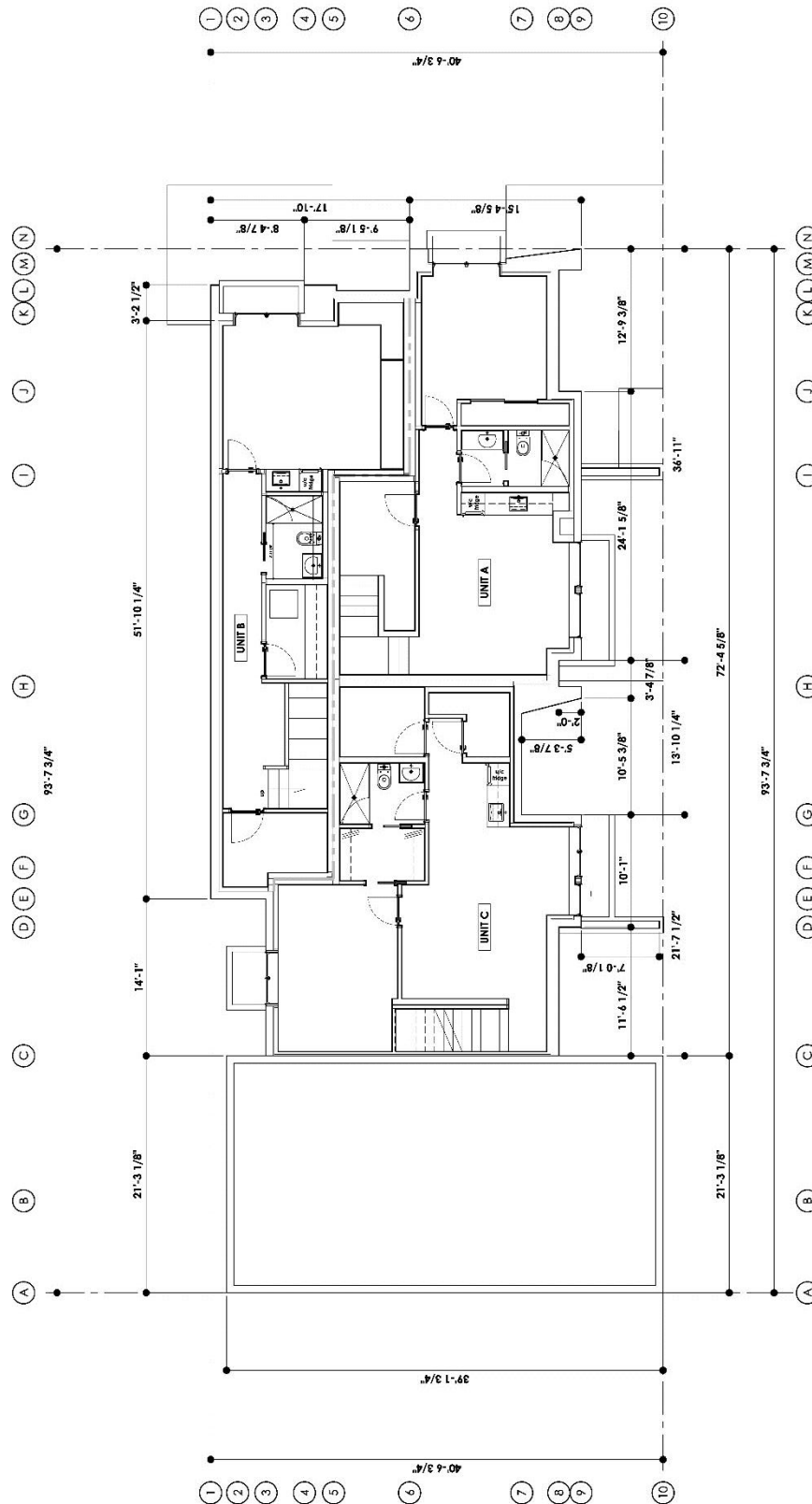
- 8 Comprehensive plans must be submitted to the **Development Authority** as part of a **development permit** application for **Permitted Development**. In considering such an application, the **Development Authority** must ensure the **development** plans conform with the plans attached to this Direct Control District as Schedule “C”.

Proposed Direct Control Guidelines

Schedule C

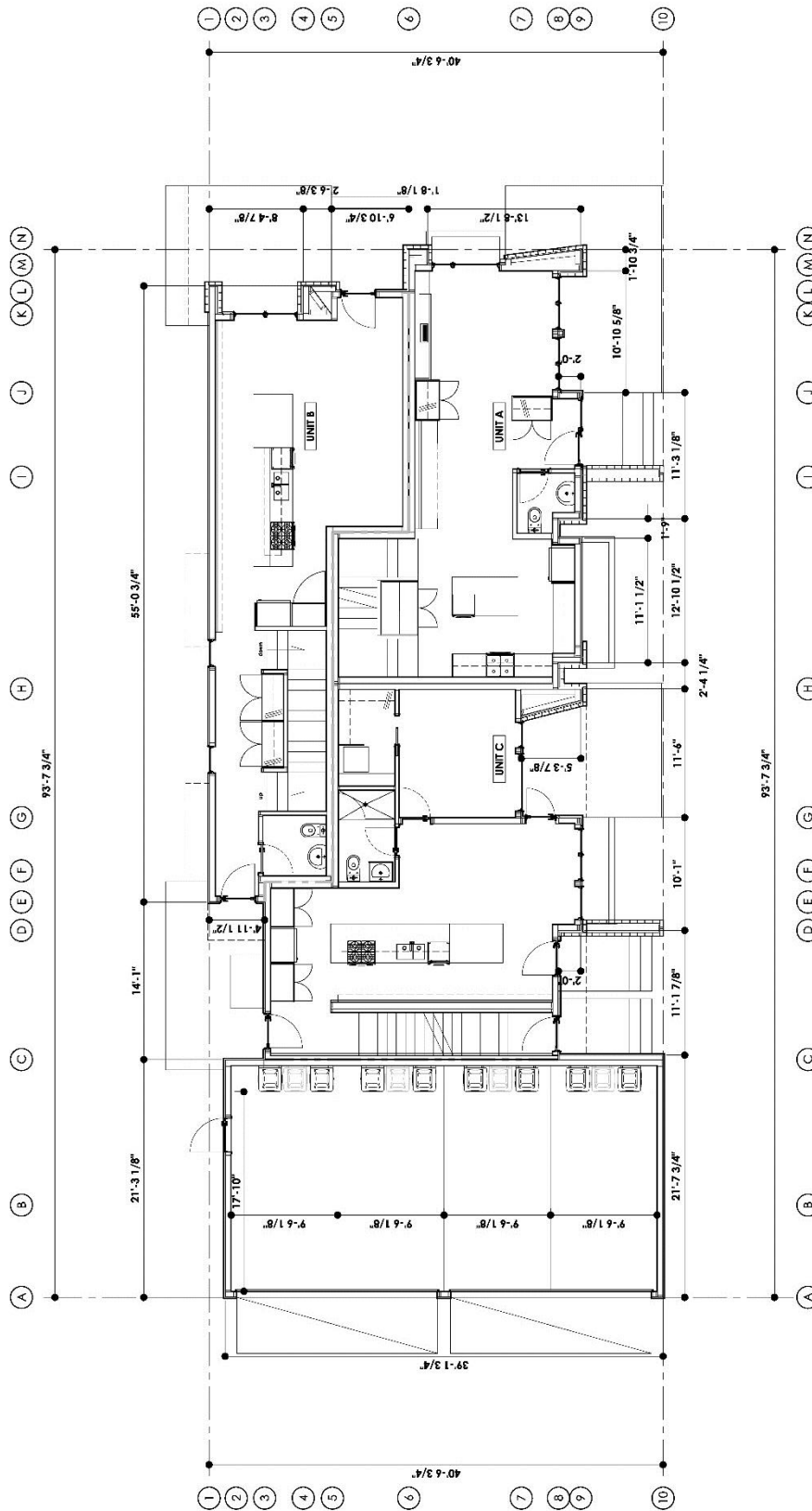


Proposed Direct Control Guidelines



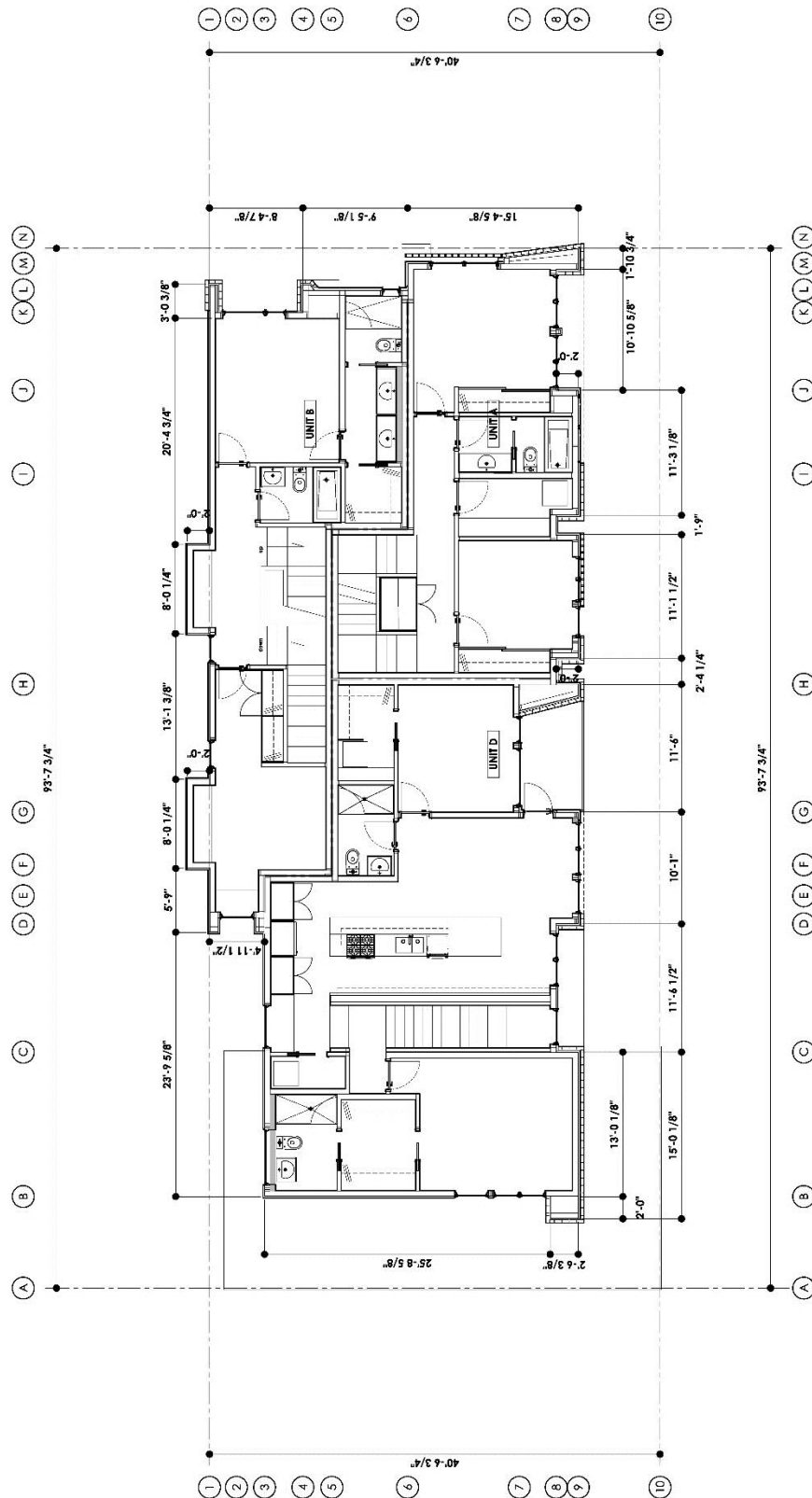
BASEMENT FLOOR PLAN

Proposed Direct Control Guidelines



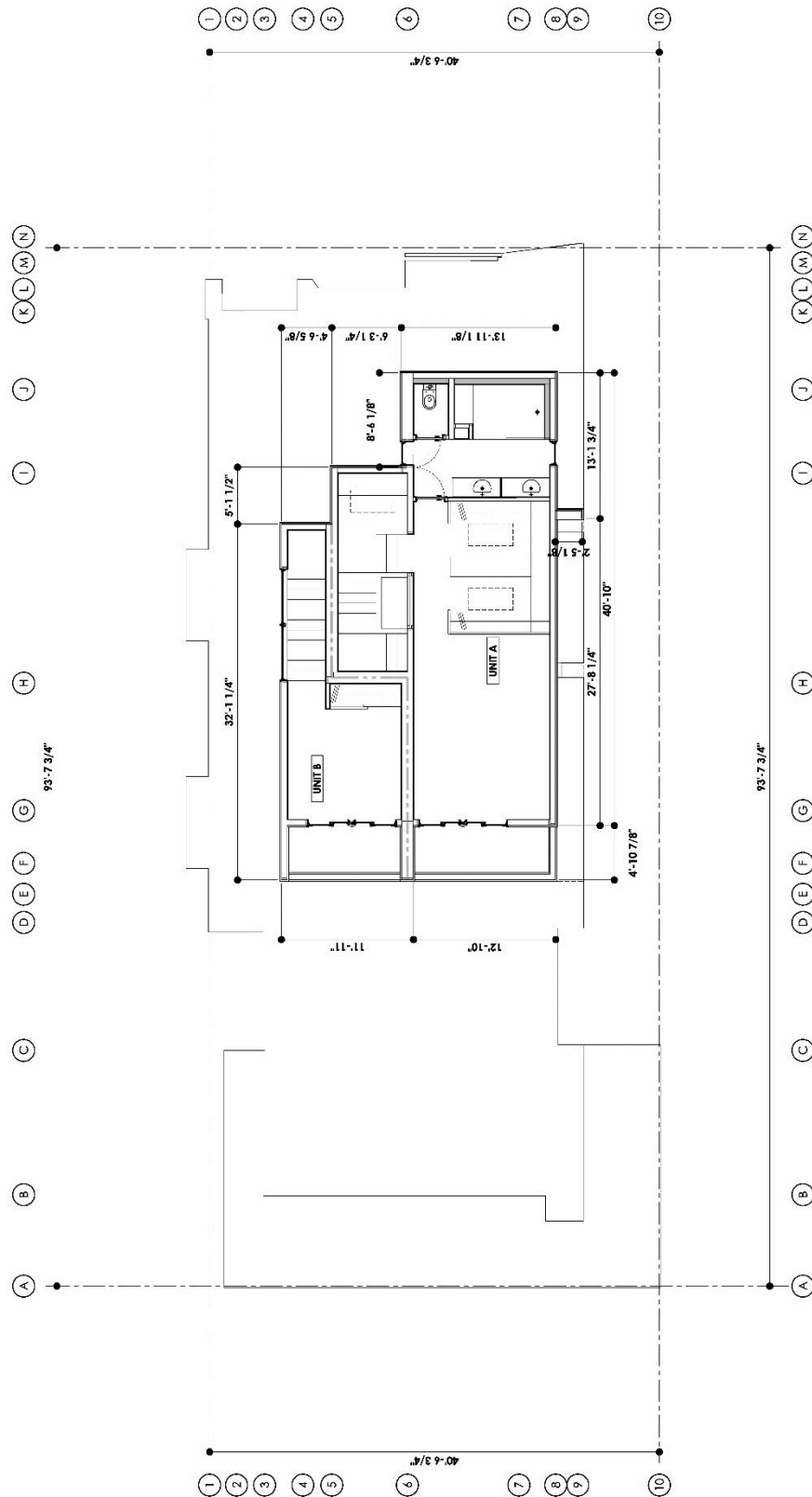
MAIN FLOOR PLAN

Proposed Direct Control Guidelines

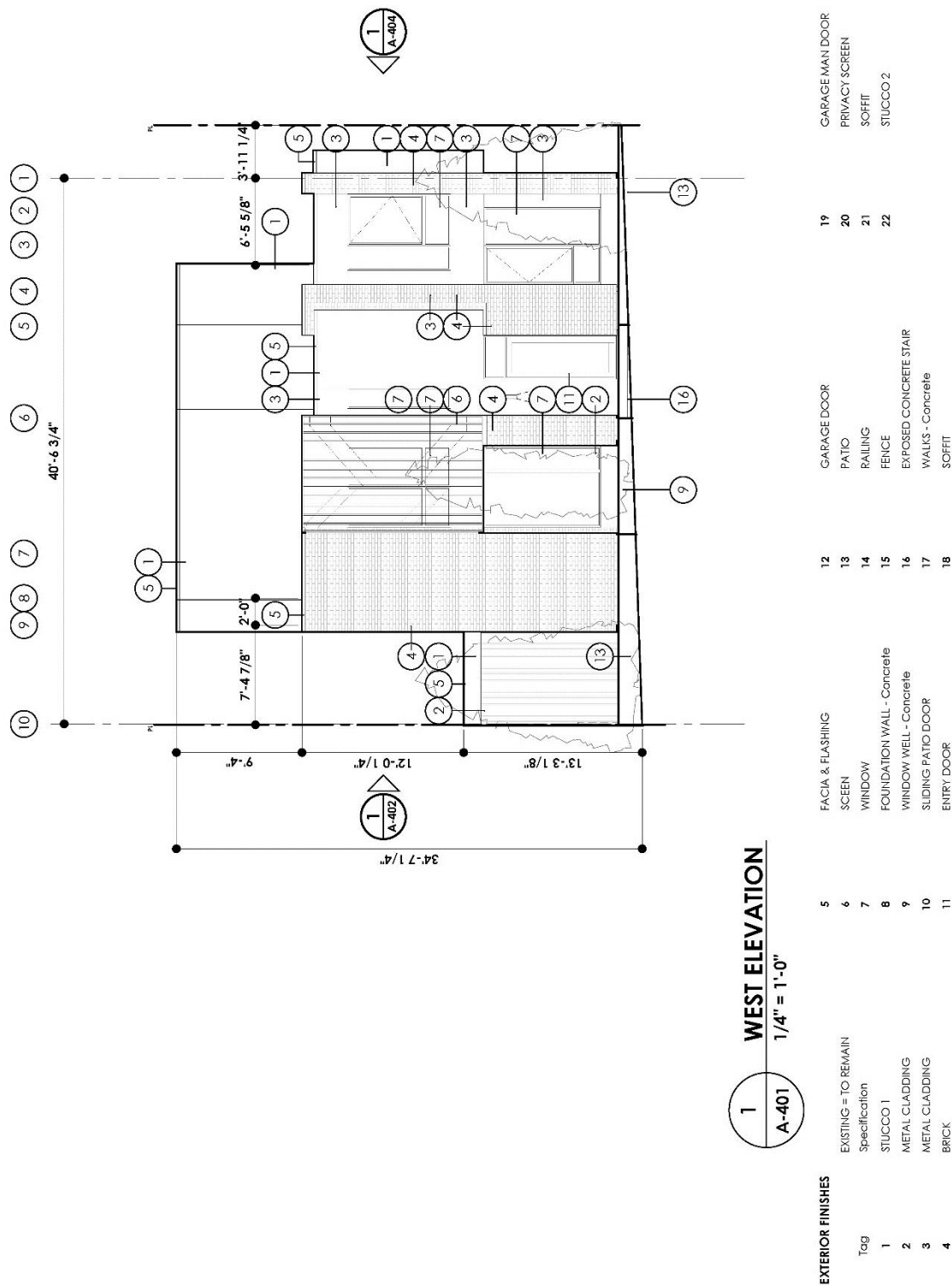


SECOND FLOOR PLAN

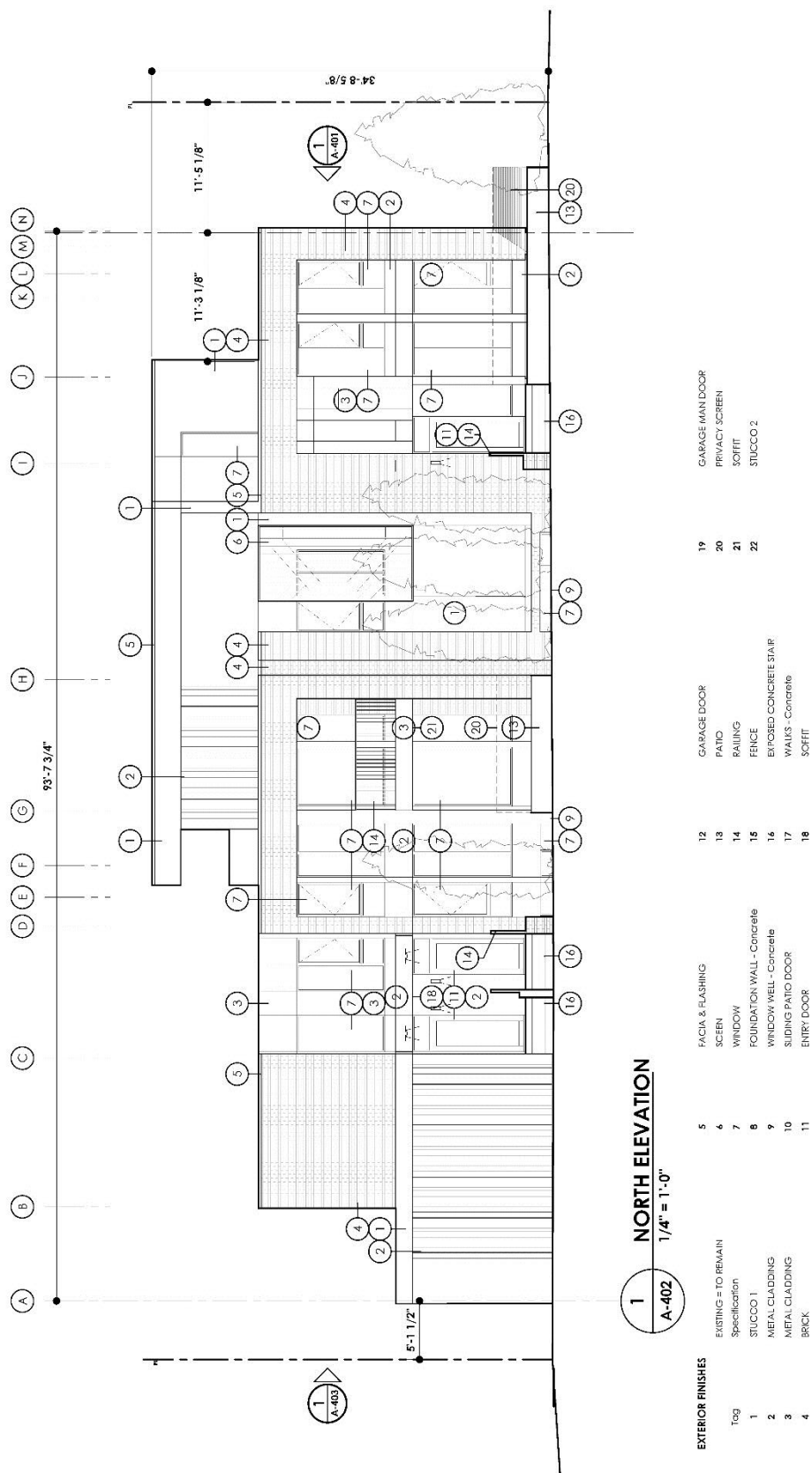
Proposed Direct Control Guidelines



Proposed Direct Control Guidelines



Proposed Direct Control Guidelines



Proposed Direct Control Guidelines

