

Building Height

Figure 1: Method for measuring the height of a single or semi-detached dwelling on a flat site in the low density residential districts

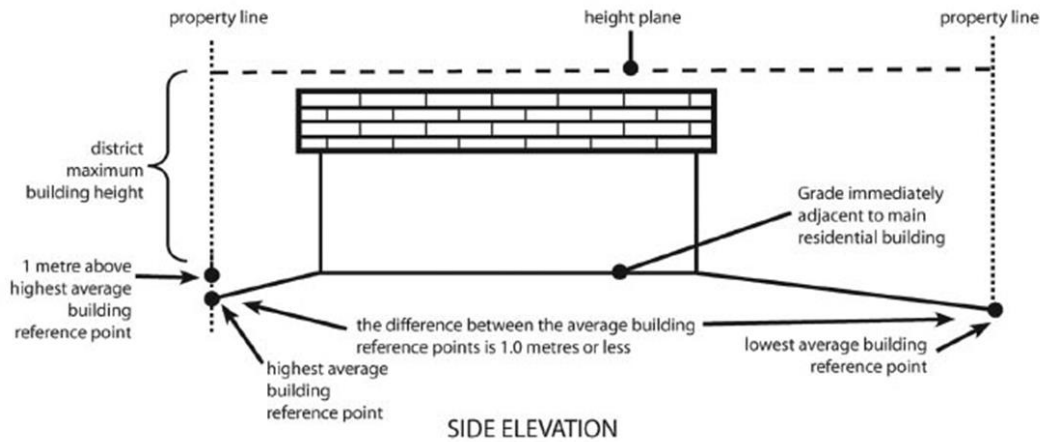
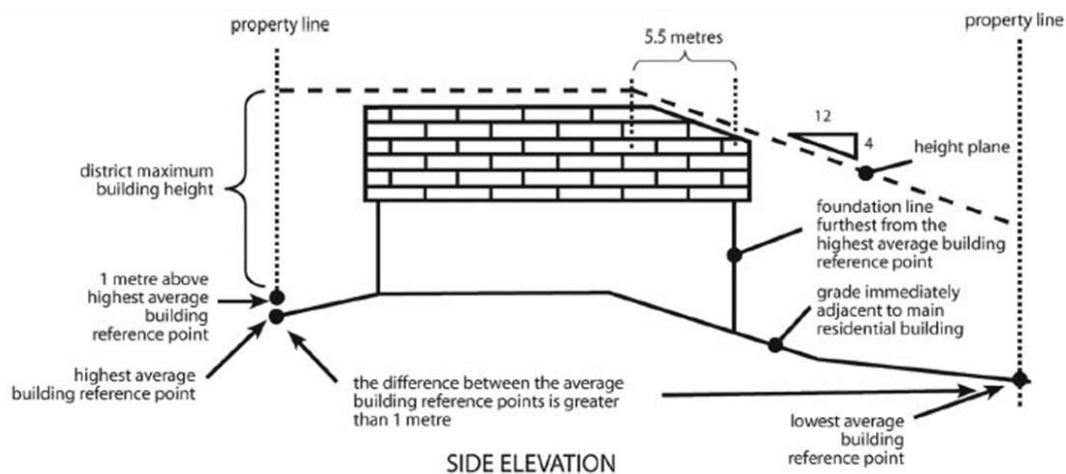


Figure 2: Method for measuring the height of a single or semi-detached dwelling on a sloping site in the low density residential districts



Building Height

Figure 3: Method for measuring building height from grade for rowhouses in the R-CG District

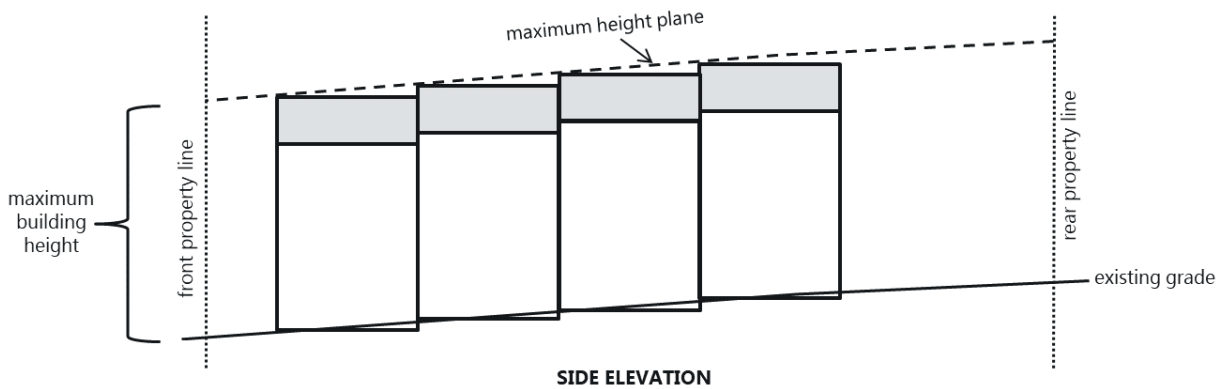
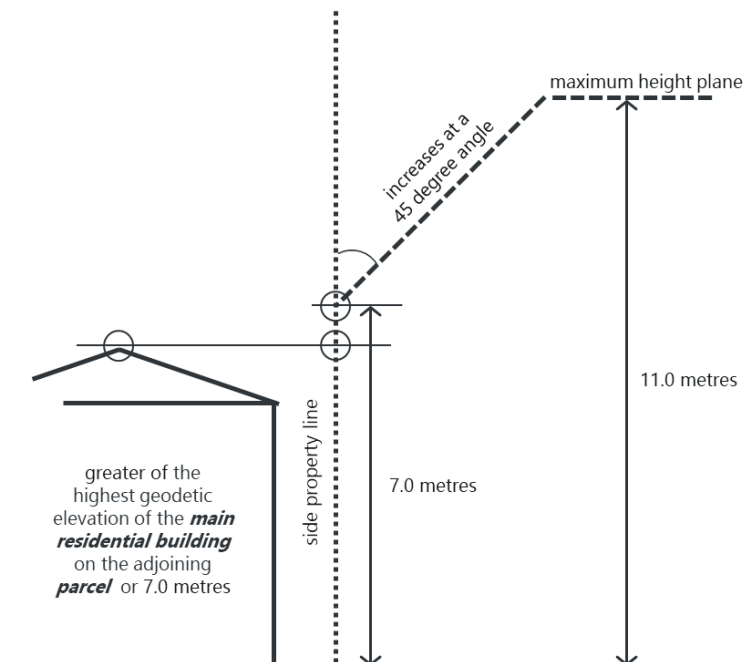


Figure 4: Proposed height chamfer next to a building under 7 metres



Building Height

Figure 5: Proposed height chamfer next to a building over 7 metres

