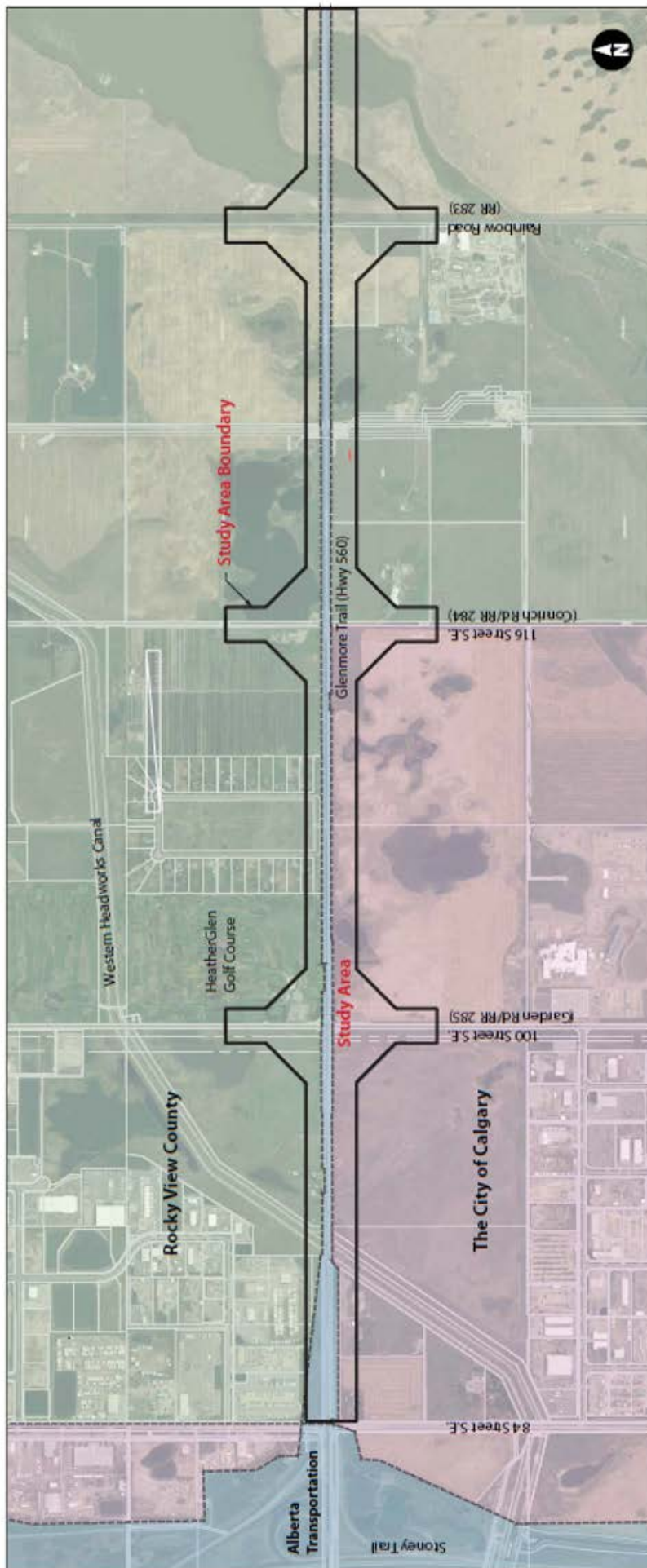




# Study Site Plan



- Legend**
- Rocky View County
  - Alberta Transportation
  - The City of Calgary
  - Jurisdictional Boundary
  - Study Area

**Glenmore Trail East Study —  
100 Street S.E. to Rainbow Road**

*\*The initial scope was confined to the Glenmore Trail and 100 Street S.E. intersection. Based on public input, planned development and the shifting role of 116 Street S.E., the study area was expanded to include the 116 Street S.E. interchange in Phase 2 of the study. While developing the final recommendations, Rainbow Road was also included due to its proximity to the 116 Street S.E. interchange and its role in this transportation network.*