

## Social Wellbeing Principles

### The City will:

Strive to provide **EQUITABLE** services. This includes removing barriers to **ACCESS** and **INCLUSION**.

Seek opportunities to grow and support **CULTURE**.

Aim to stop social problems before they begin using a **PREVENTION** approach.

Advance the active and shared process of **TRUTH** and **RECONCILIATION** in collaboration with the community.

### Advisory Committee on Accessibility

To make recommendations to Council through the Standing Policy Committee on Community and Protective Services on policy and systems issues impacting people with disabilities.

### Social Wellbeing Advisory Committee

To work with Administration to advise Council on policies, strategies and service delivery in accordance with the Social Wellbeing Principles. The SWB Committee's main purpose is to provide advice using an intersectional\* approach by drawing on different perspectives of its membership.

### Calgary Urban Aboriginal Affairs Committee

To act as a liaison, advisory and support body between The City and Aboriginal people living in Calgary.

## Social Wellbeing Advisory Committee Composition

### Representatives from =

  
Advisory Committee on Accessibility (ACA)

  
Calgary Aboriginal Urban Affairs Committee (CAUAC)

  
Calgary Local Immigration Partnership Council

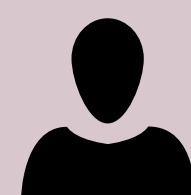
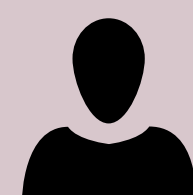
  
Cultural Leadership Council

  
Family & Community Support Services Forum

  
Gender Equity and Diversity Strategy Committee

  
Senior's Age Friendly Advisory Steering Committee

### Council Appointed Members=



+ Admin (non-voting)

\* Intersectional in this context means to consider how decisions impact people who are members of different or overlapping population groups.