

## Proposed DC Direct Control Guidelines

### Purpose

- 1 This Direct Control District is intended to provide for a multi- residential development as a **permitted use** where it conforms to the plans in Schedule “C”.

### Compliance with Bylaw 1P2007

- 2 Unless otherwise specified, the rules and provisions of Parts 1, 2, 3 and 4 of Bylaw 1P2007 apply to this Direct Control District.

### Reference to Bylaw 1P2007

- 3 Within this Direct Control District, a reference to a section of Bylaw 1P2007 is deemed to be a reference to the section as amended from time to time.

### Defined Uses

- 4 In this Direct Control District:

(a) “**Permitted Development**” means a **use**:

- (i) that consists of one **main residential building** containing four **units**;
- (ii) that has **motor vehicle parking stalls**; and
- (iii) that conforms with the plans attached to this Direct Control District as Schedule “C”.

### Permitted Uses

- 5 (1) The **permitted uses** of the Residential – Contextual One/Two Dwelling (R-C2) District of Bylaw 1P2007 are the **permitted uses** in this Direct Control District.

- (2) The following **uses** are the **permitted uses** in this Direct Control District provided the **development** conforms with the plans attached as Schedule “C” of this Direct Control District:

(a) **Permitted Development.**

### Discretionary Uses

- 6 The **discretionary uses** of the Residential – Contextual One/Two Dwelling (R-C2) District of Bylaw 1P2007 are the **discretionary uses** in this Direct Control District.

### Bylaw 1P2007 District Rules

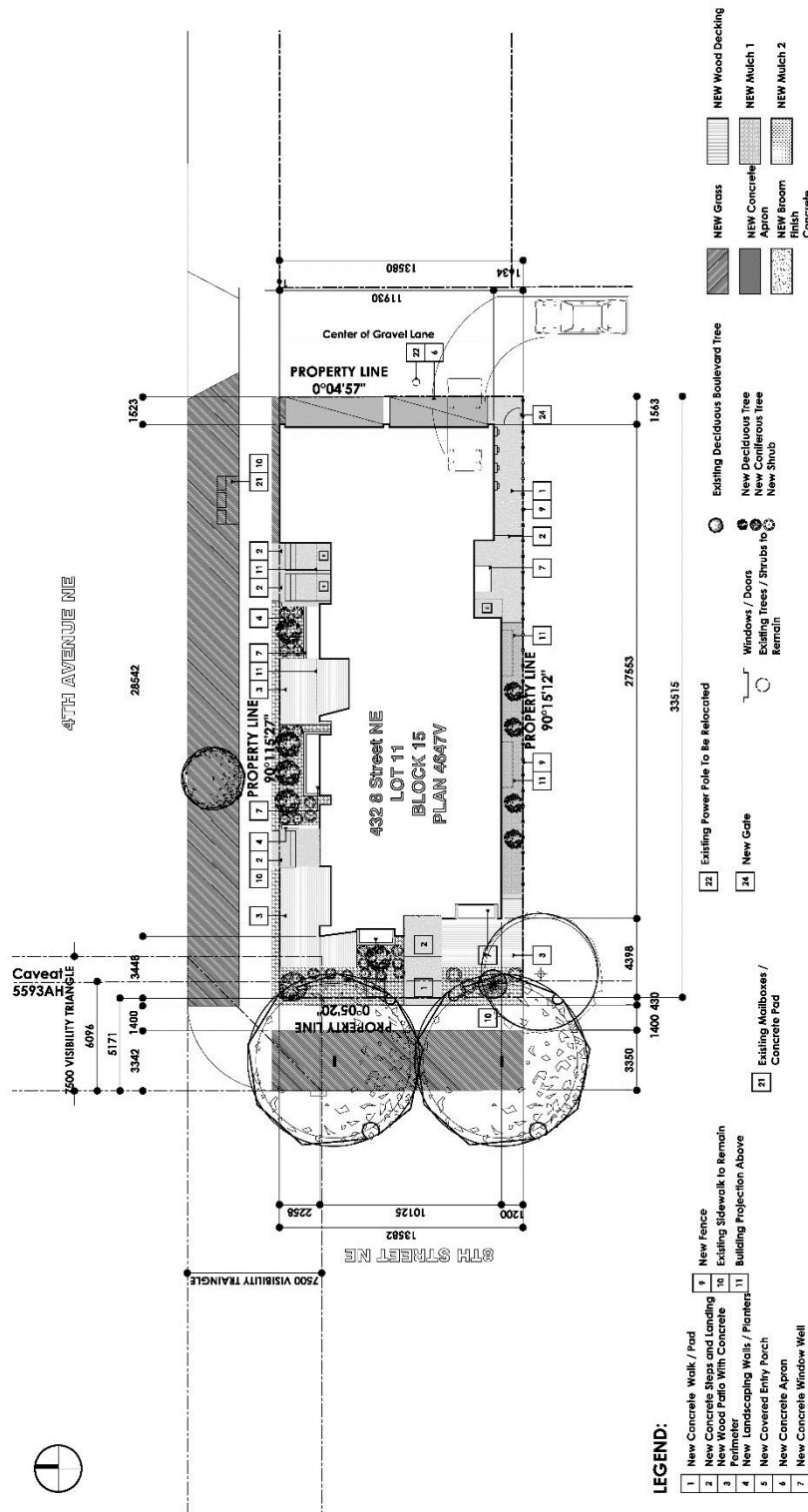
- 7 Unless otherwise specified, the rules of the Residential – Contextual One/Two Dwelling (R-C2) District of Bylaw 1P2007 apply in this Direct Control District.

### Development Plans for Permitted Development

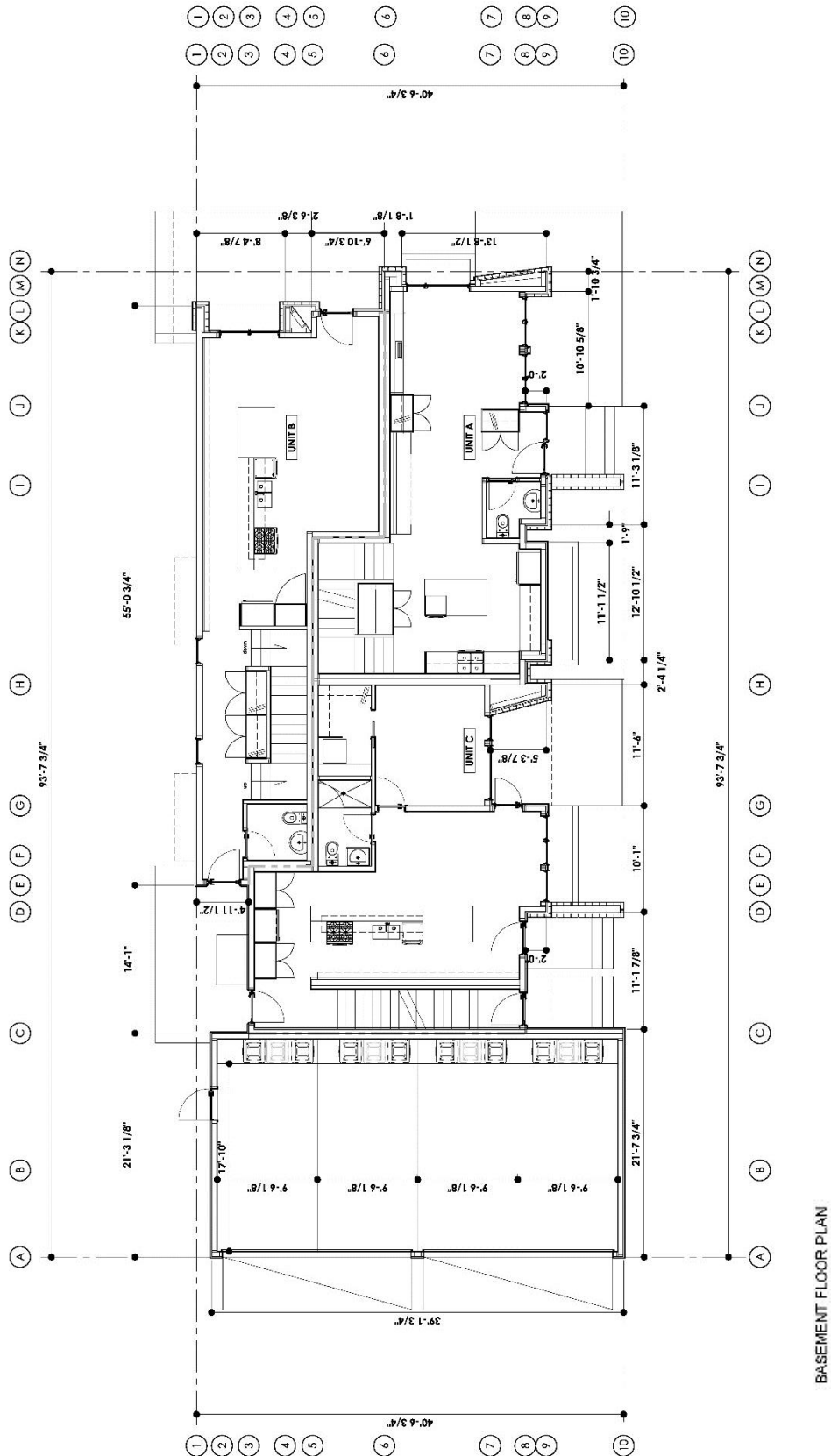
- 8 Comprehensive plans must be submitted to the **Development Authority** as part of a **development permit** application for **Permitted Development**. In considering such an application, the **Development Authority** must ensure the **development** plans conform with the plans attached to this Direct Control District as Schedule “C”.

Proposed DC Direct Control Guidelines

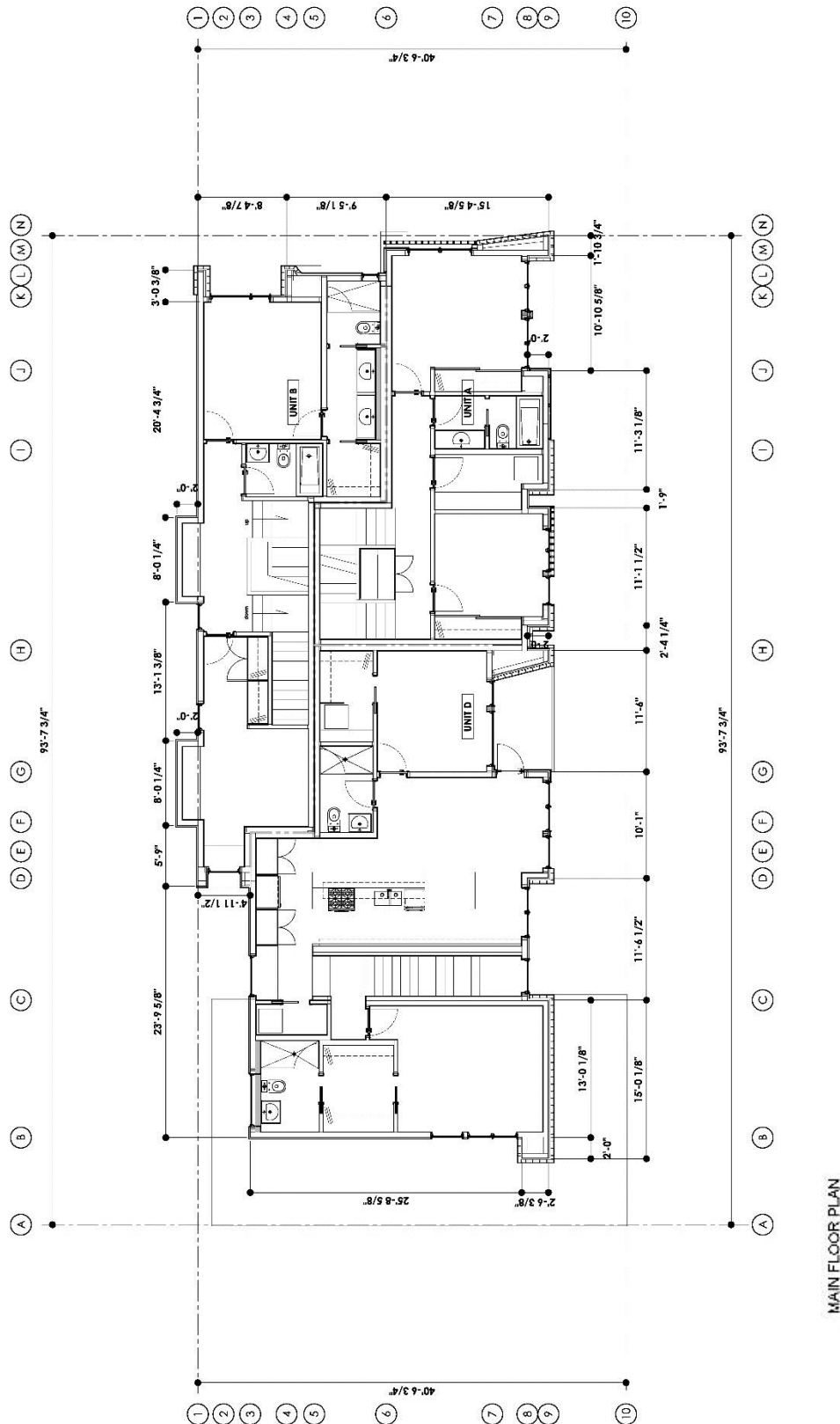
Schedule C



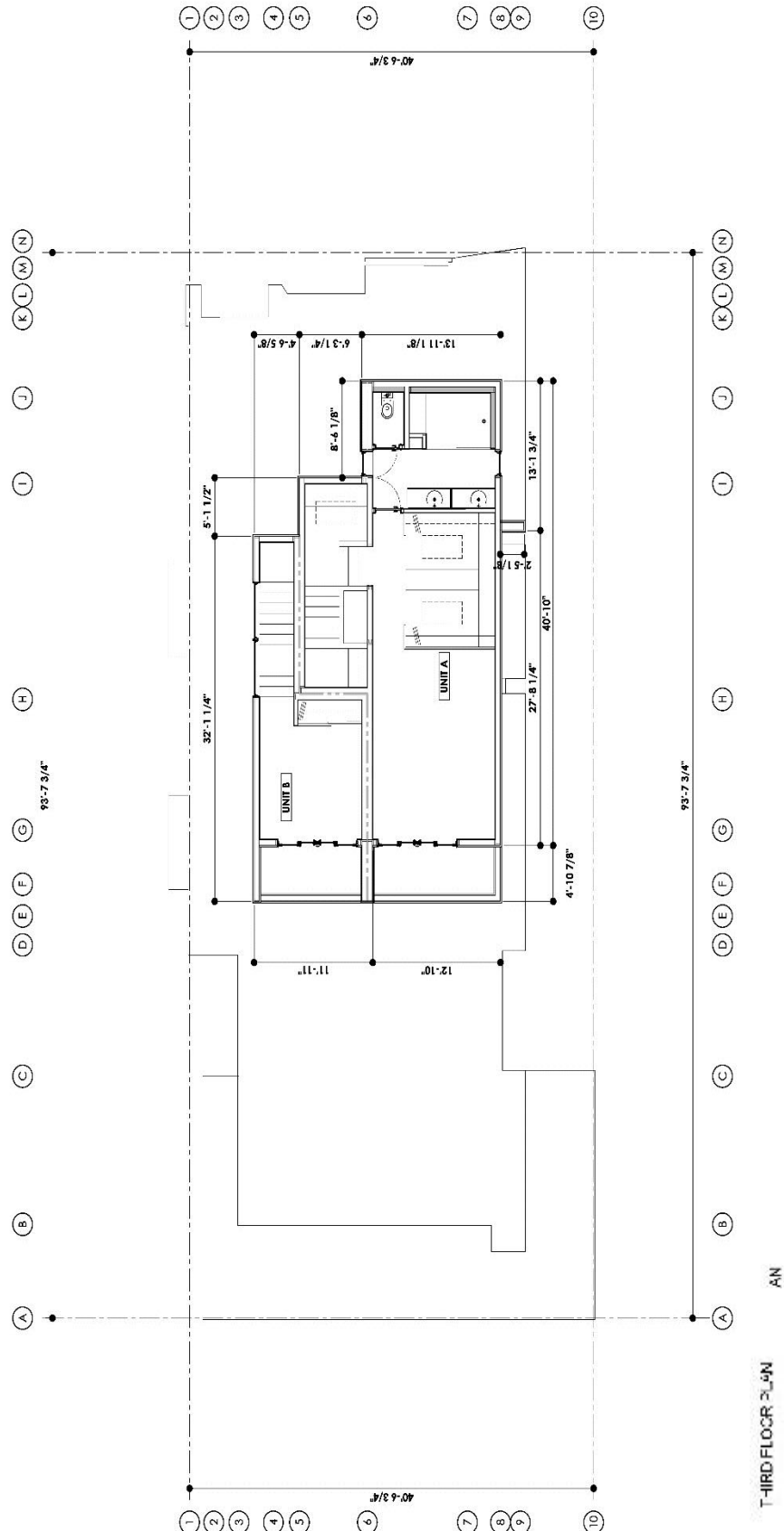
# Proposed DC Direct Control Guidelines



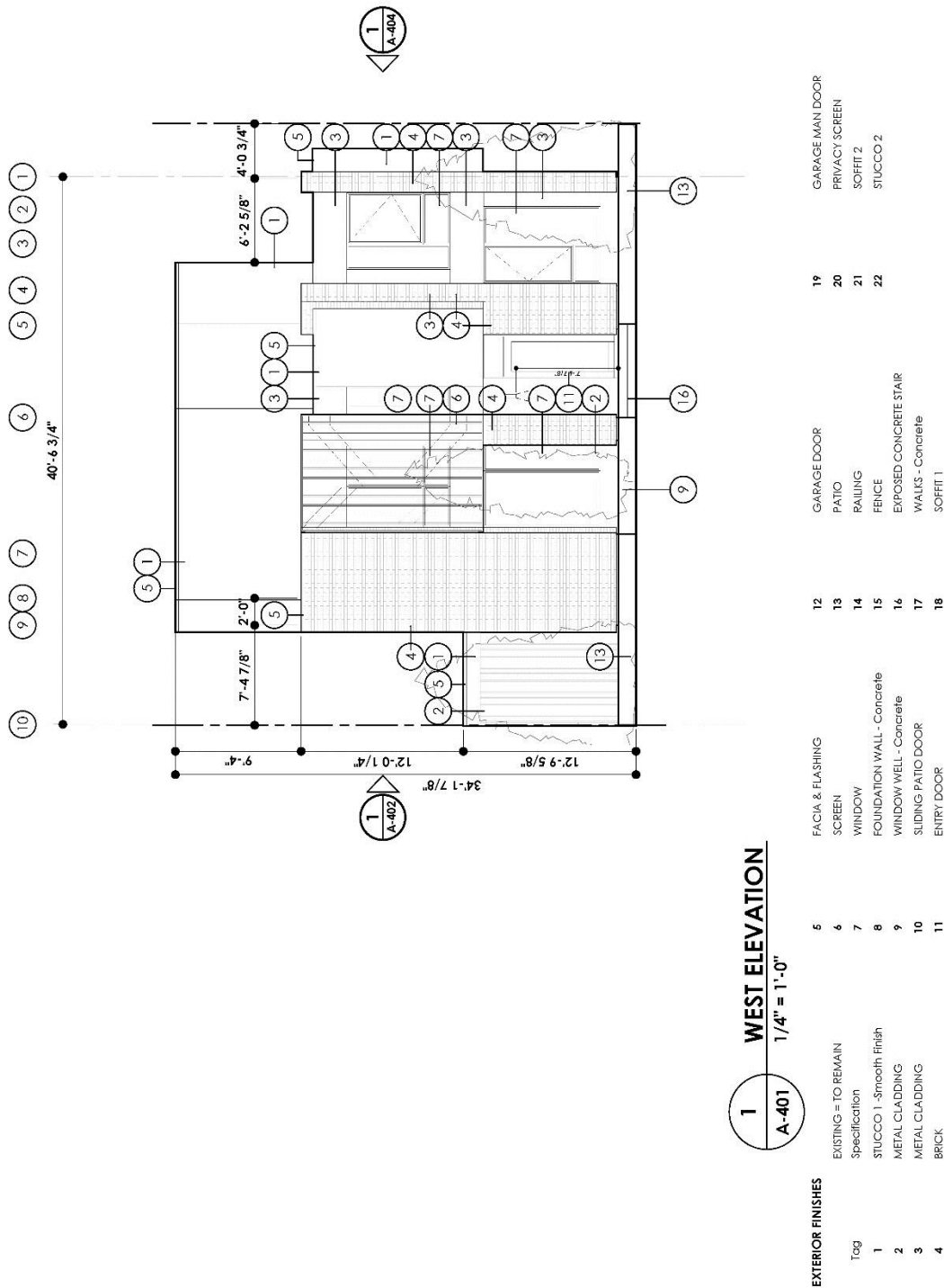
## Proposed DC Direct Control Guidelines



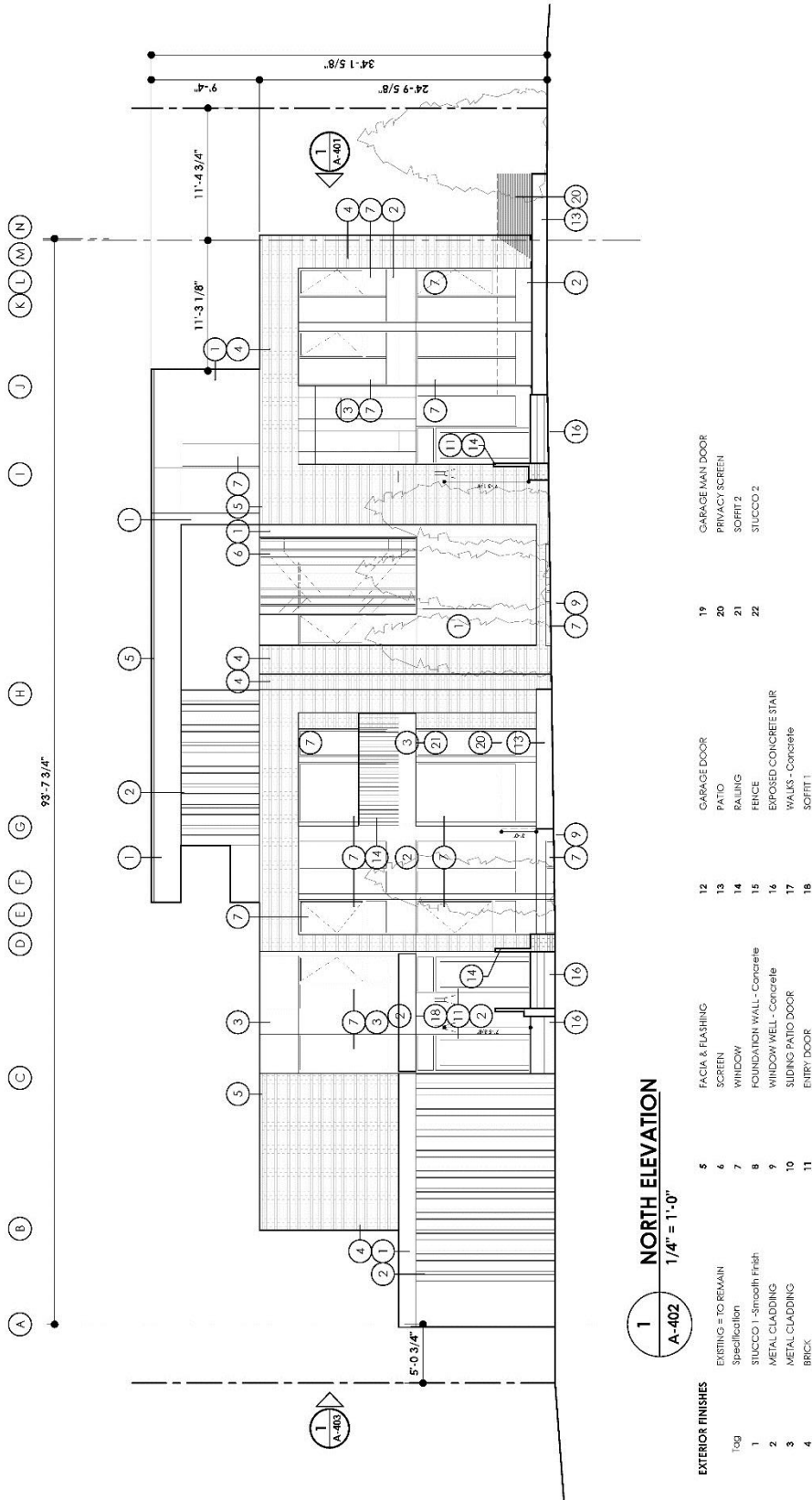
# Proposed DC Direct Control Guidelines



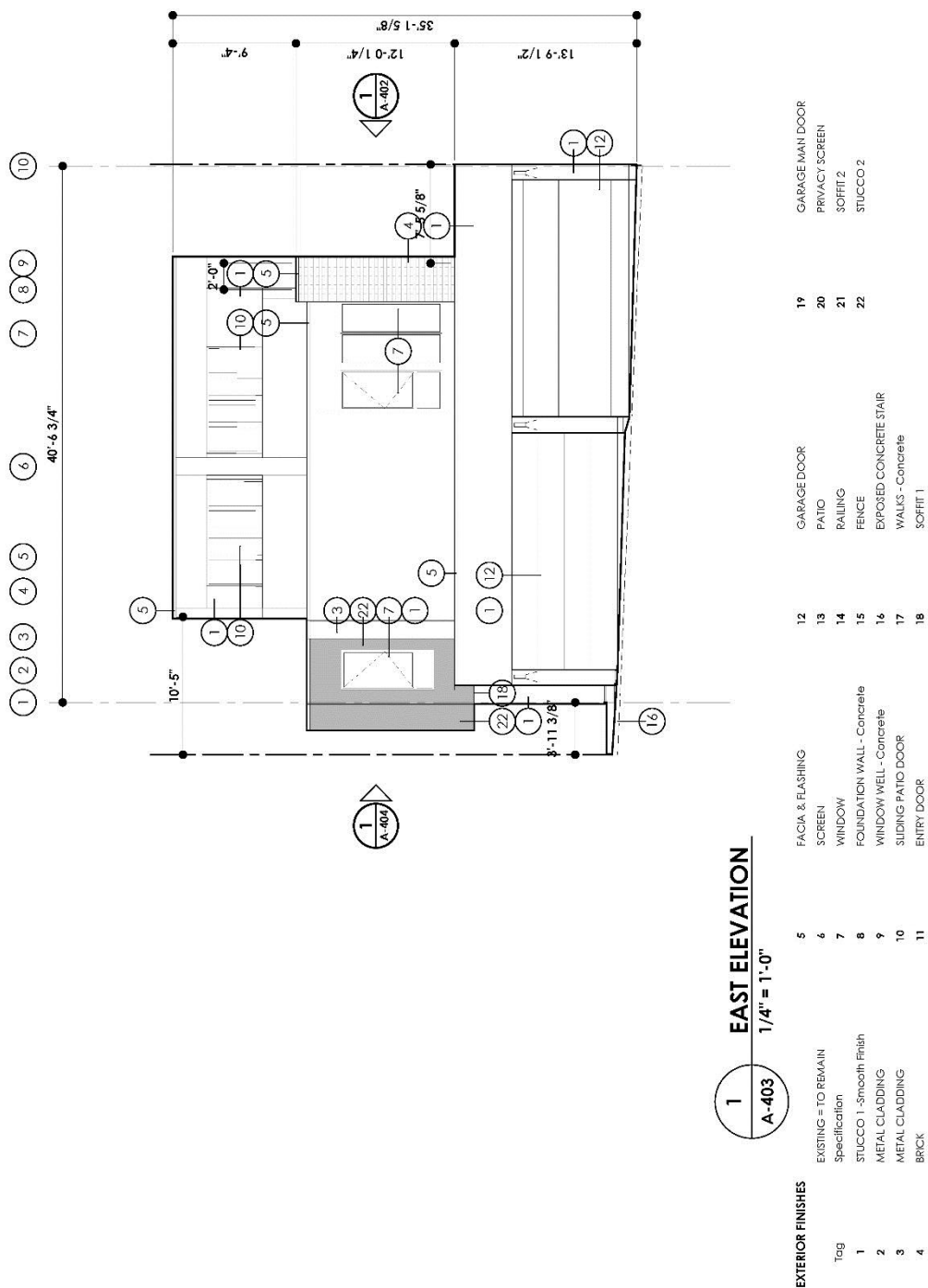
Proposed DC Direct Control Guidelines



Proposed DC Direct Control Guidelines



Proposed DC Direct Control Guidelines





Proposed DC Direct Control Guidelines

