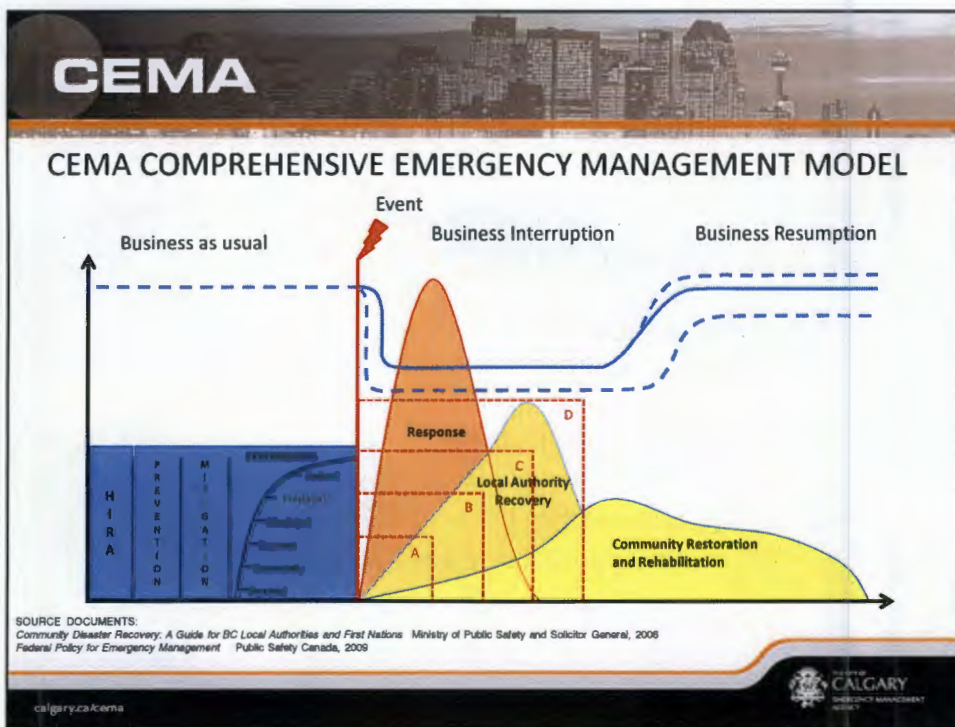
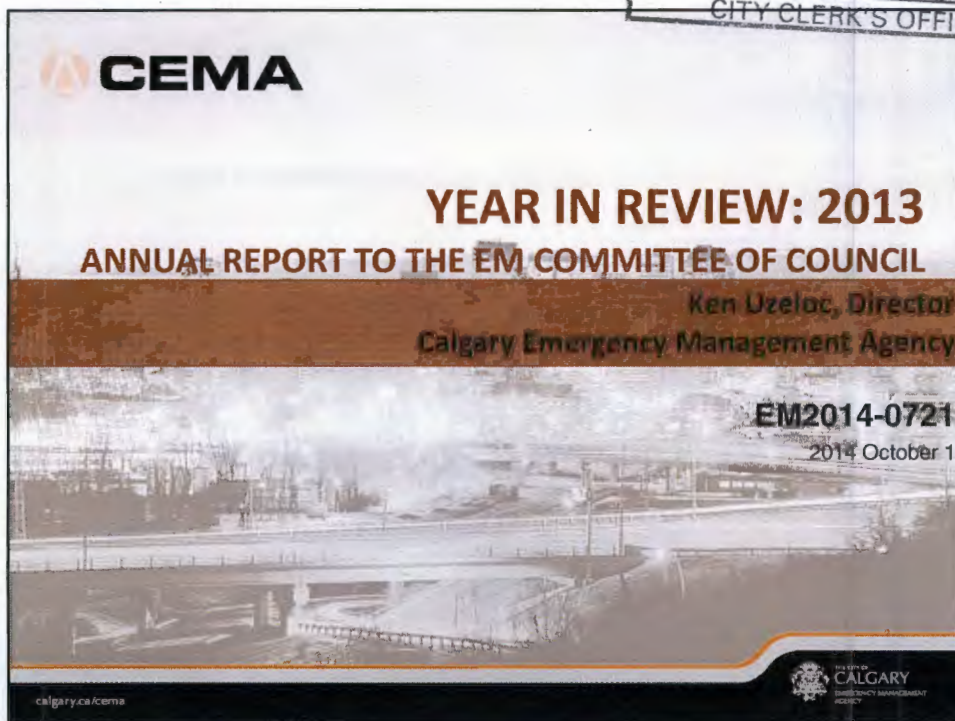
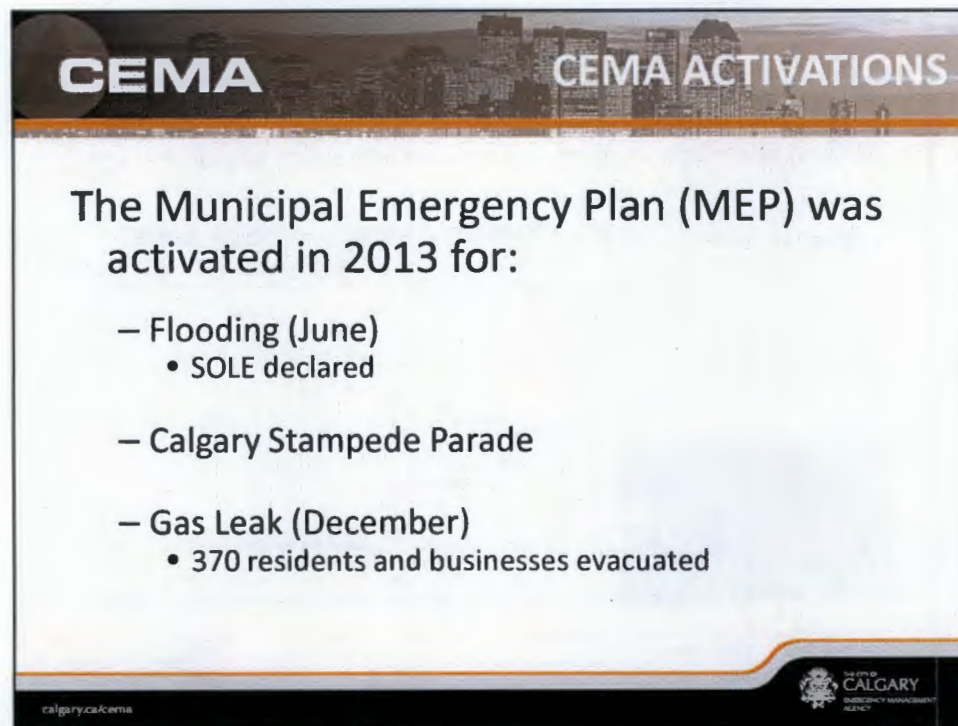
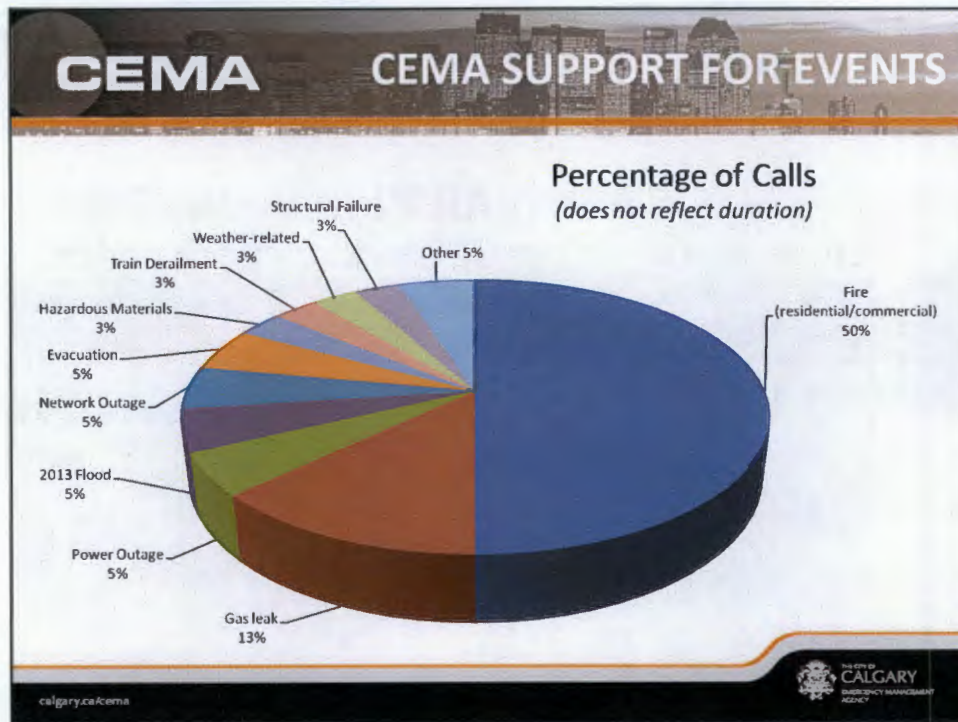
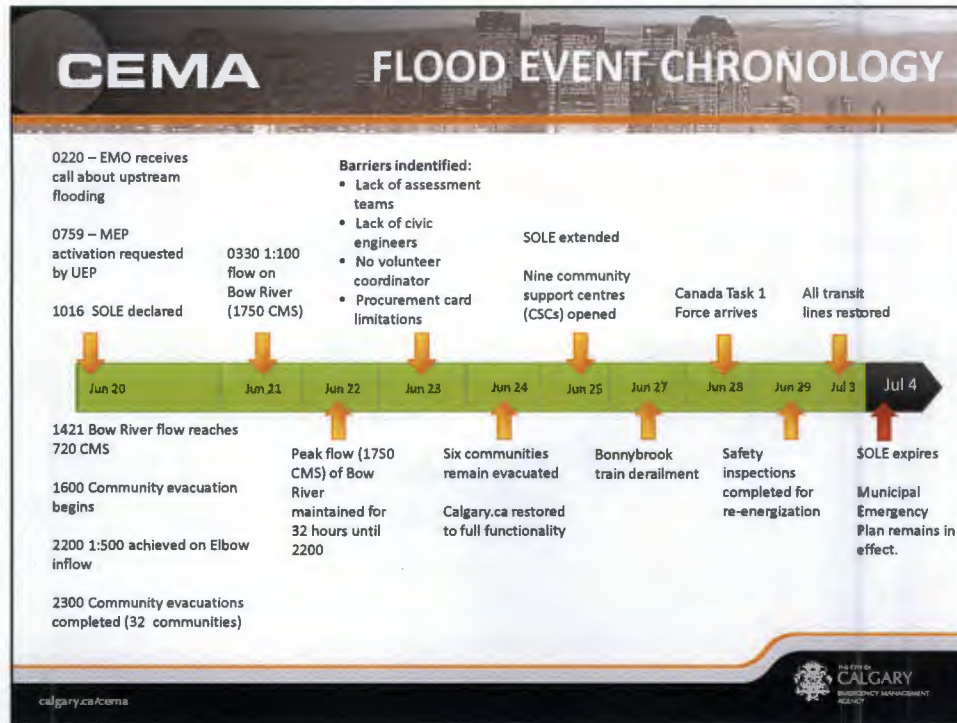


9/26/2014







CEMA**FLOOD RESPONSE**

1,130 City employees provided Emergency Social Services (ESS) support, equaling 18,000 hours of support to evacuees.



Canada Task Force provided almost 14,000 personnel hours.

calgary.ca/cema

**CEMA****COMMUNITY ENGAGEMENT**

Disaster Alley 2013 held at McMahon Stadium.



Over 4,000 people attended.

calgary.ca/cema



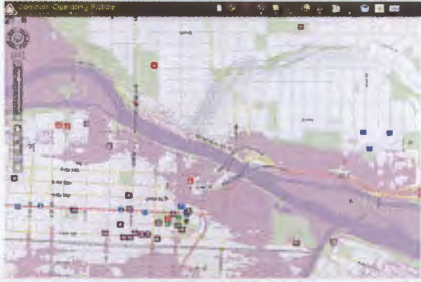
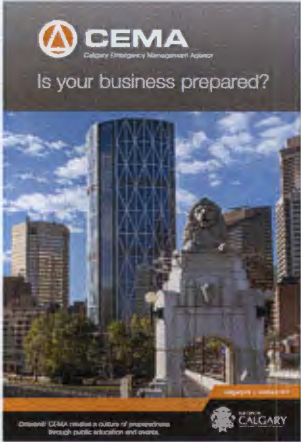
[illegible]

CEMA


STRATEGIC RESULT AREAS

2. Build operational readiness

3. Plan for business continuity and recovery

calgary.ca/cema



THE CITY OF
CALGARY
EMERGENCY MANAGEMENT
AGENCY

CEMA

STRATEGIC RESULT AREAS

5. Strengthen the agency

Calgary Chamber

CN

TransAlta™

CANADIAN PACIFIC

calgary.ca/cema



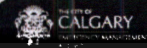
THE CITY OF
CALGARY
EMERGENCY MANAGEMENT
AGENCY

The logo for the Calgary Emergency Management Agency (CEMA) is located in the top left corner of the slide. It consists of the letters "CEMA" in a bold, white, sans-serif font, set against a dark, circular background. The slide's header features a panoramic view of the Calgary skyline, including the Calgary Tower, under a hazy sky. A thin orange line runs horizontally across the slide, separating the header from the main content area.

CEMA

Administration Recommendation(s):

That the Emergency Management Committee recommends that Council receive this report for information.

The logo for the Calgary Emergency Management Agency (CEMA) is located in the top left corner of the slide. It consists of the letters "CEMA" in a bold, white, sans-serif font, set against a dark, circular background. The slide's header features a panoramic view of the Calgary skyline, including the Calgary Tower, under a hazy sky. A thin orange line runs horizontally across the slide, separating the header from the main content area.

CEMA

Thank you

