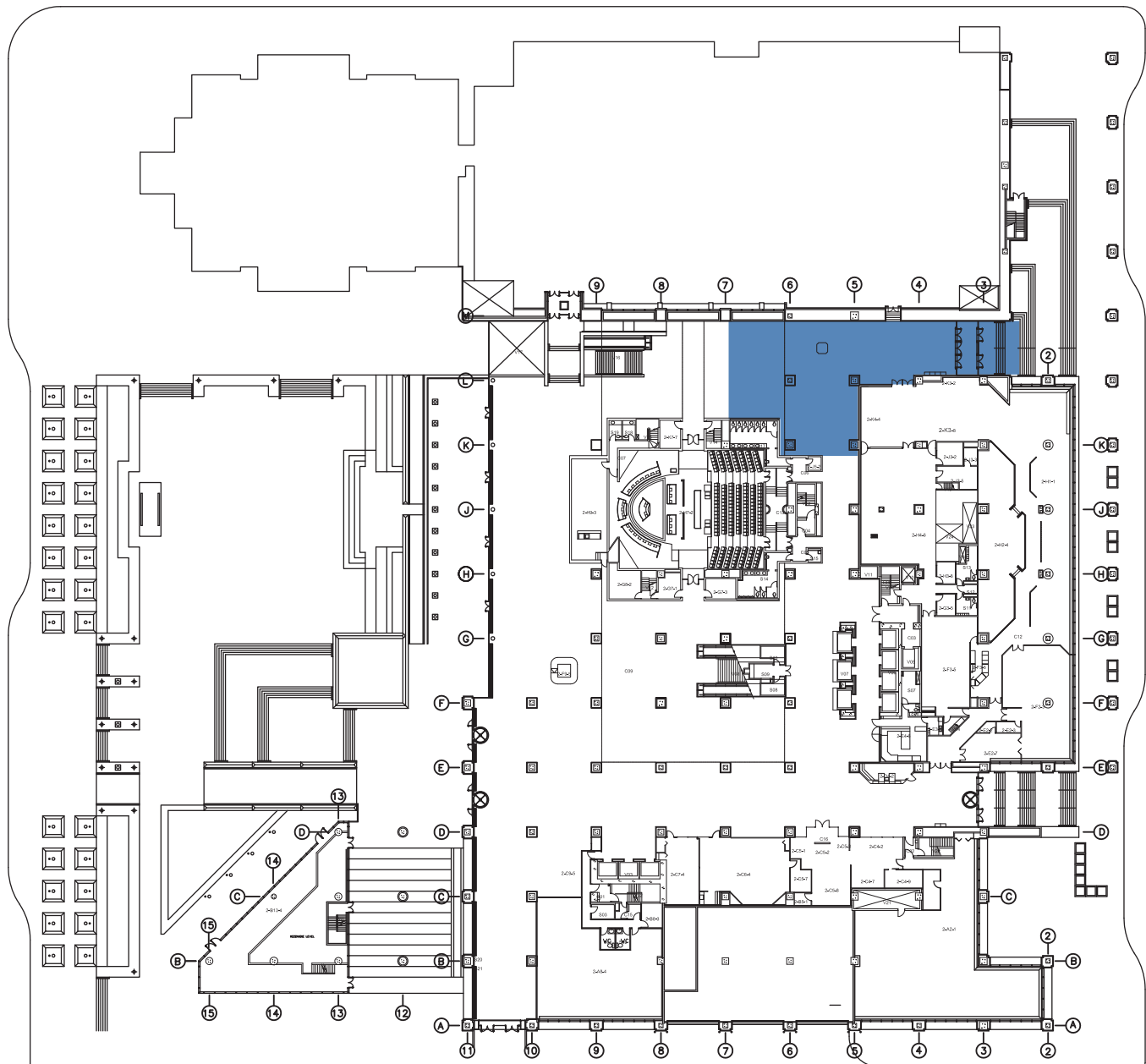


LEGEND:

 Affected Area

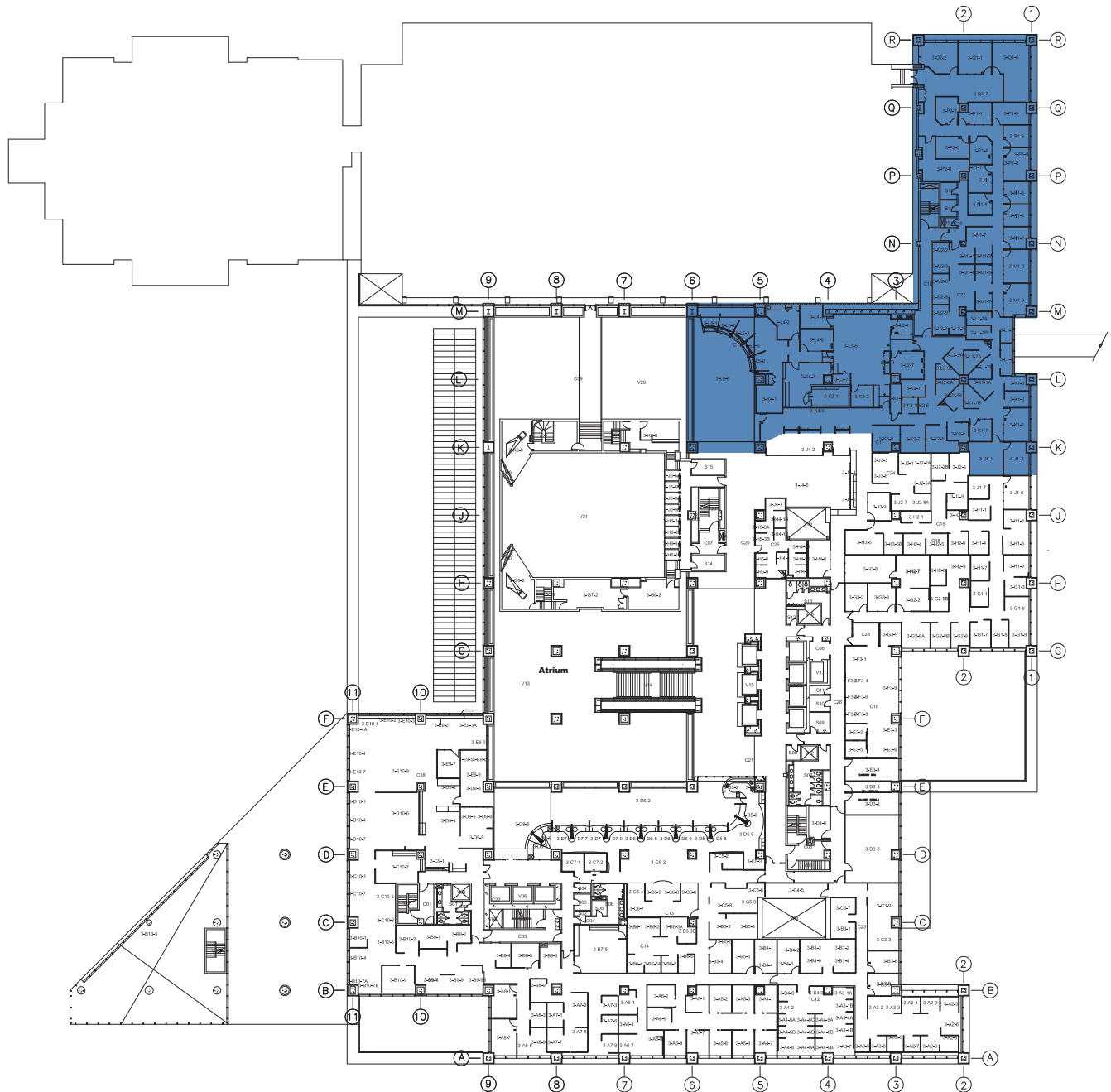
Maps of Municipal Complex Structural Upgrade Affected Areas



In Q3 2016, external specialist structural engineers determined that Truss 'A' in the north east corner of the Municipal Complex did not meet the life safety requirements of the Alberta Building Code. Subsequently, the Administrative Leadership Team activated the City's Municipal emergency Plan and directed that 500 staff in portions of the Municipal Complex be temporarily relocated as a safety precaution. Attachment 1 provides maps of the affected areas of the Municipal Complex.

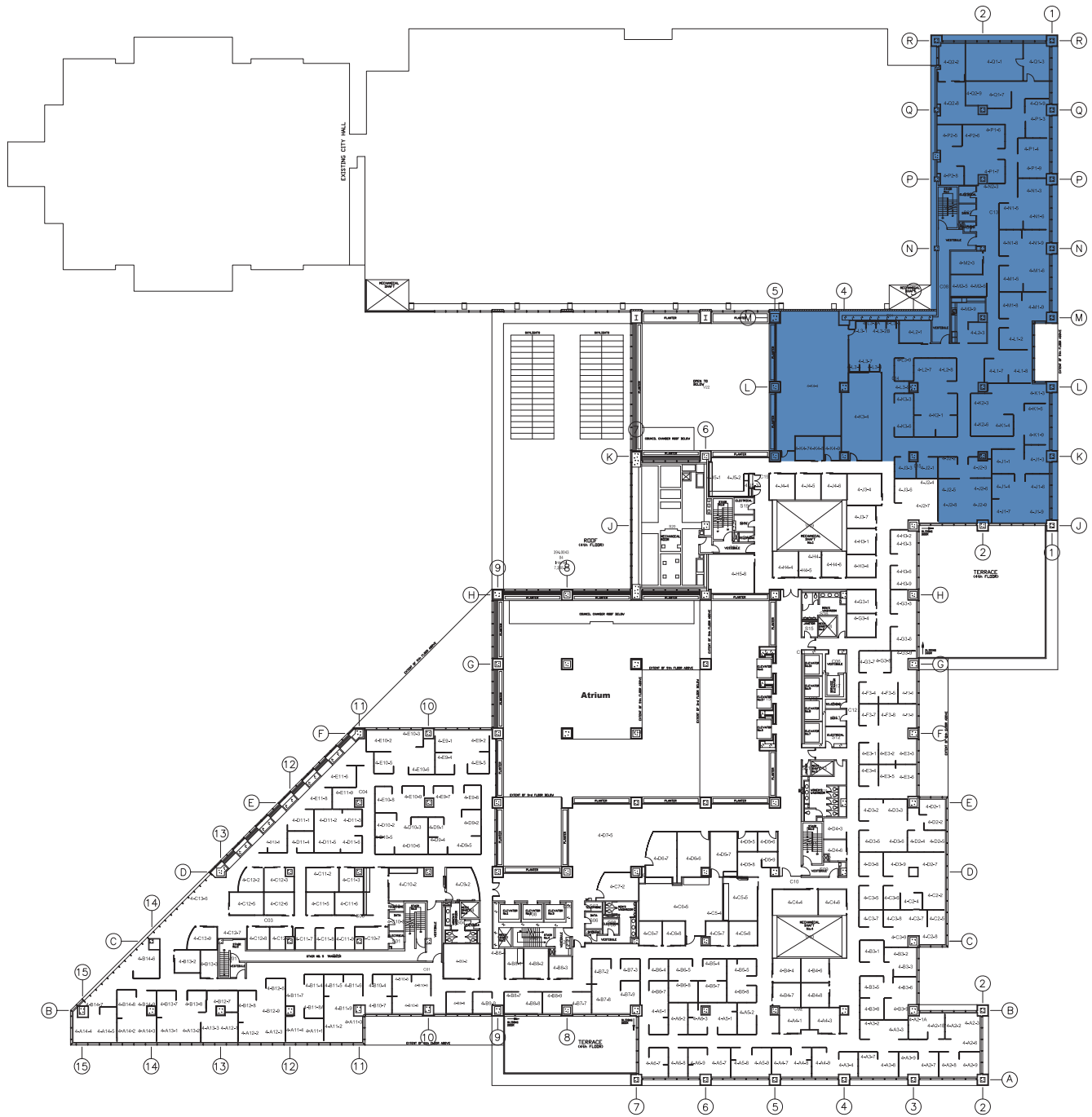
LEGEND:

Affected Area Affected Area



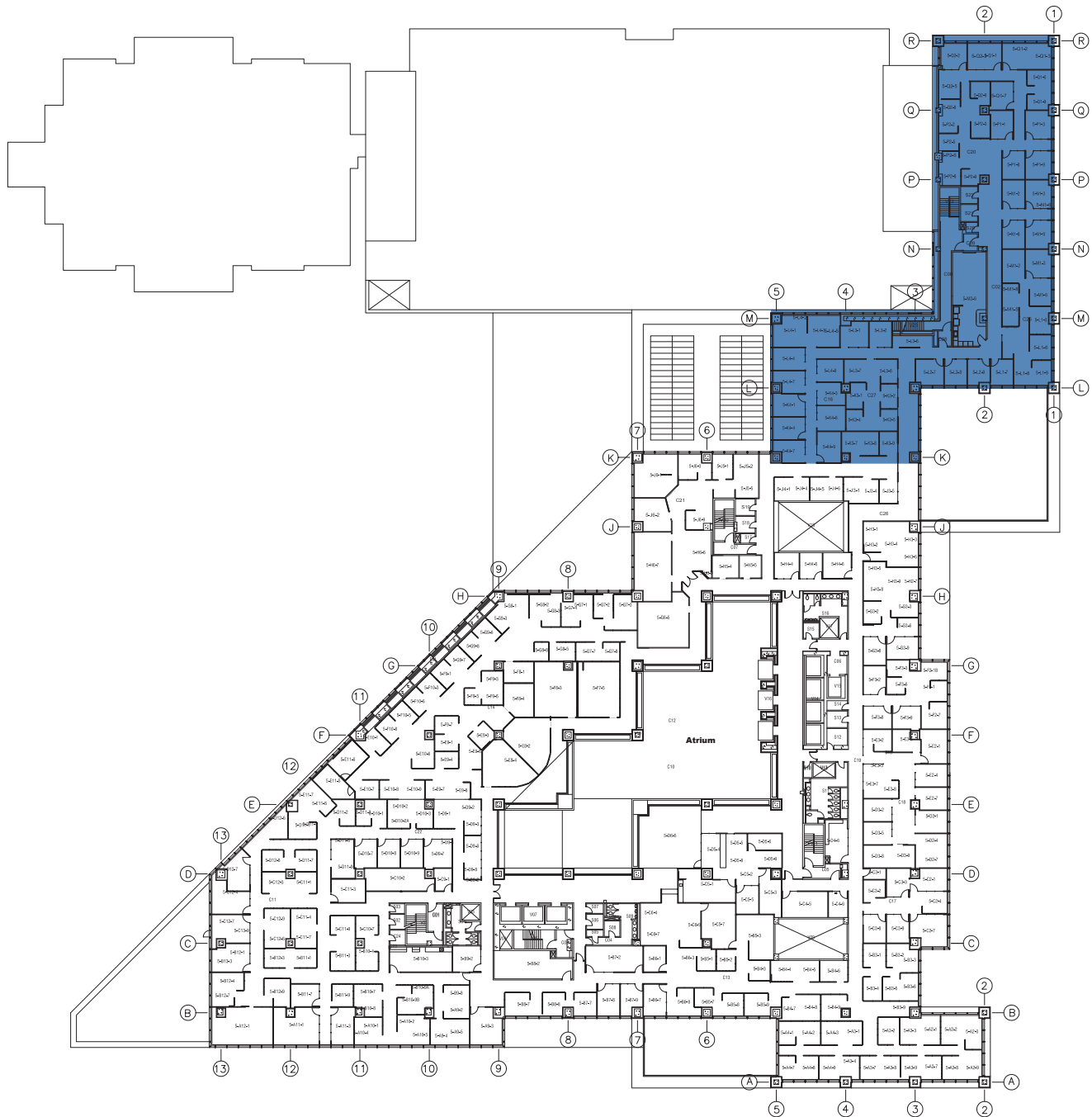
LEGEND:

Affected Area Affected Area



LEGEND:

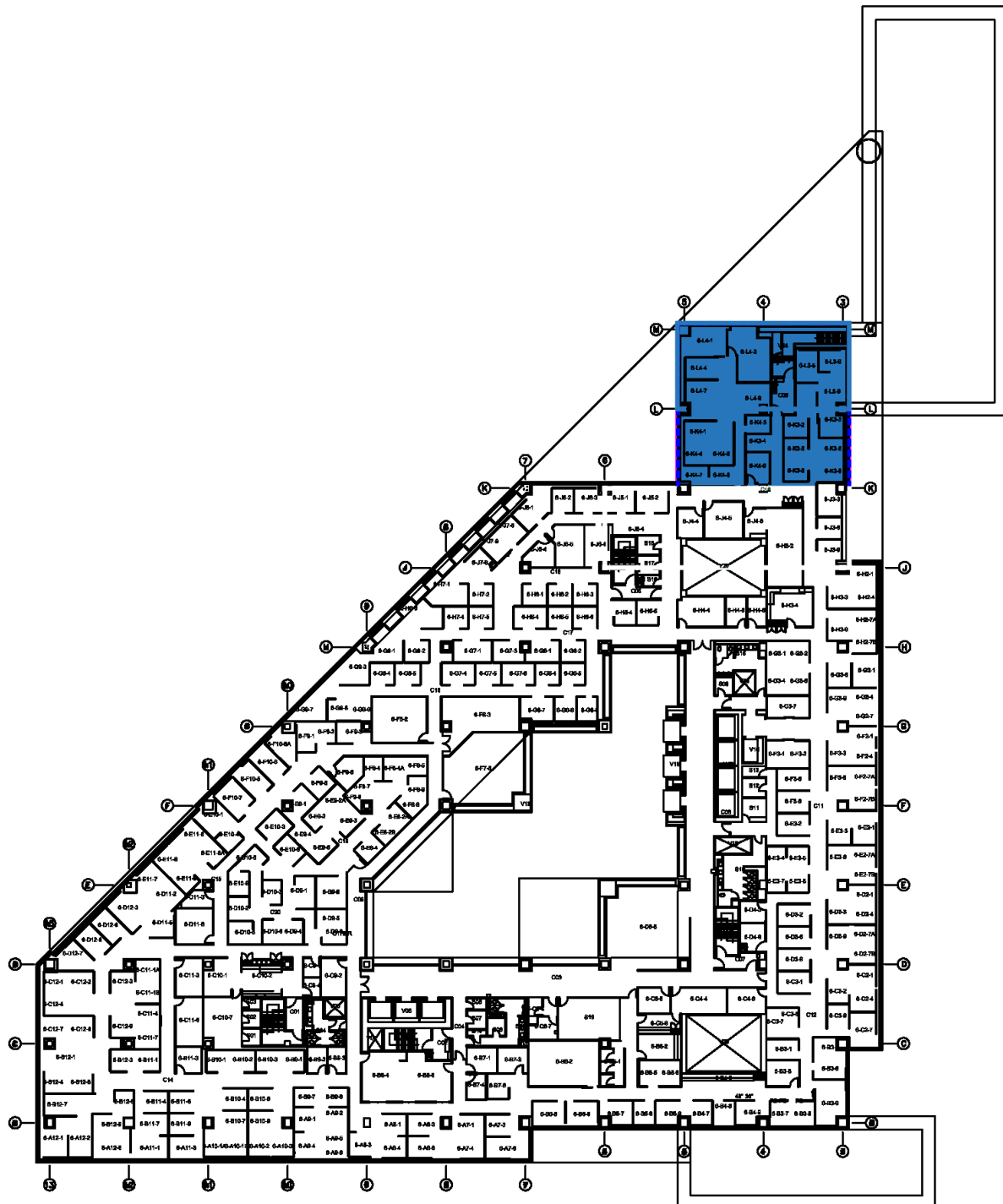
 Affected Area



LEGEND:



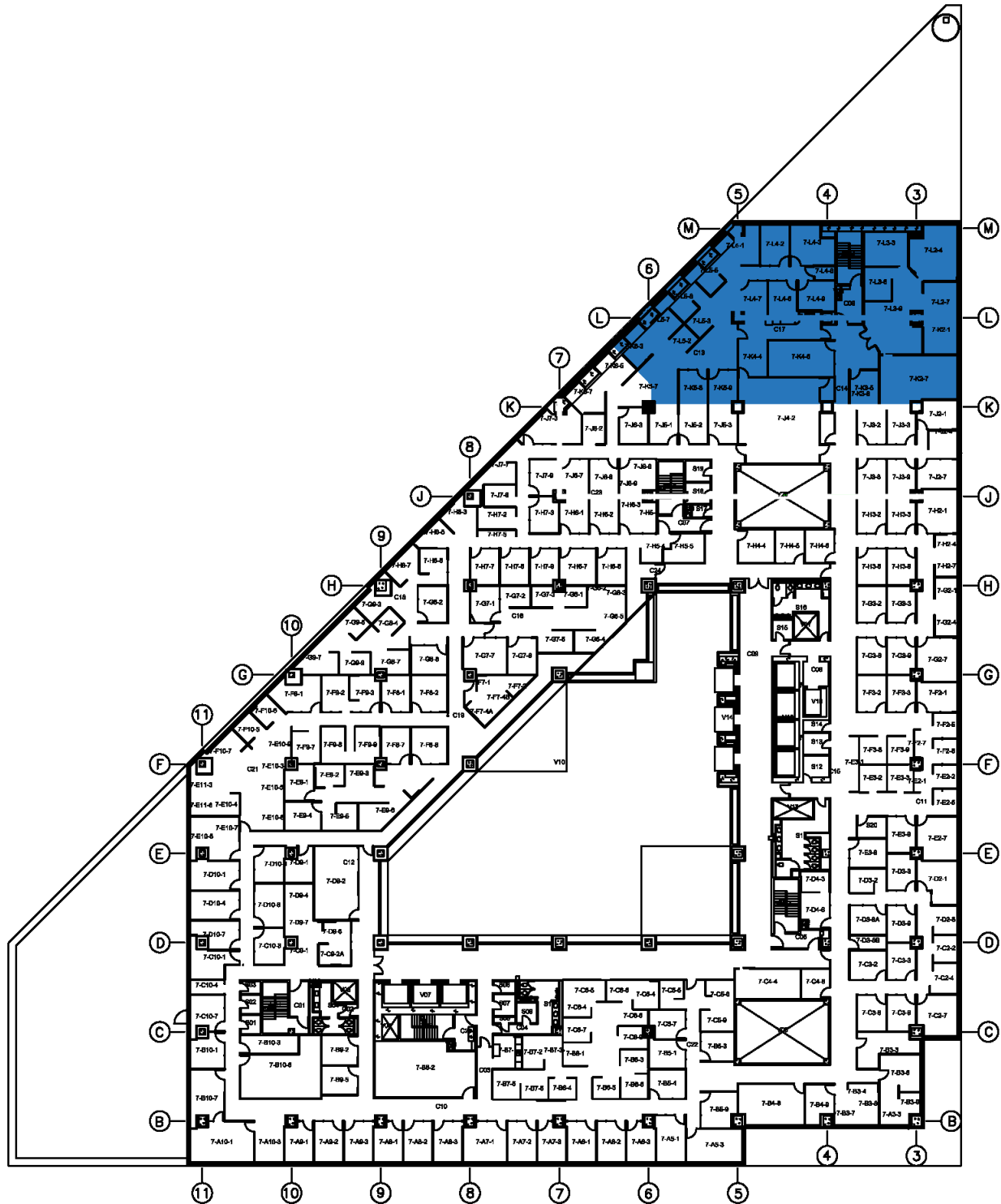
Affected Area



LEGEND:

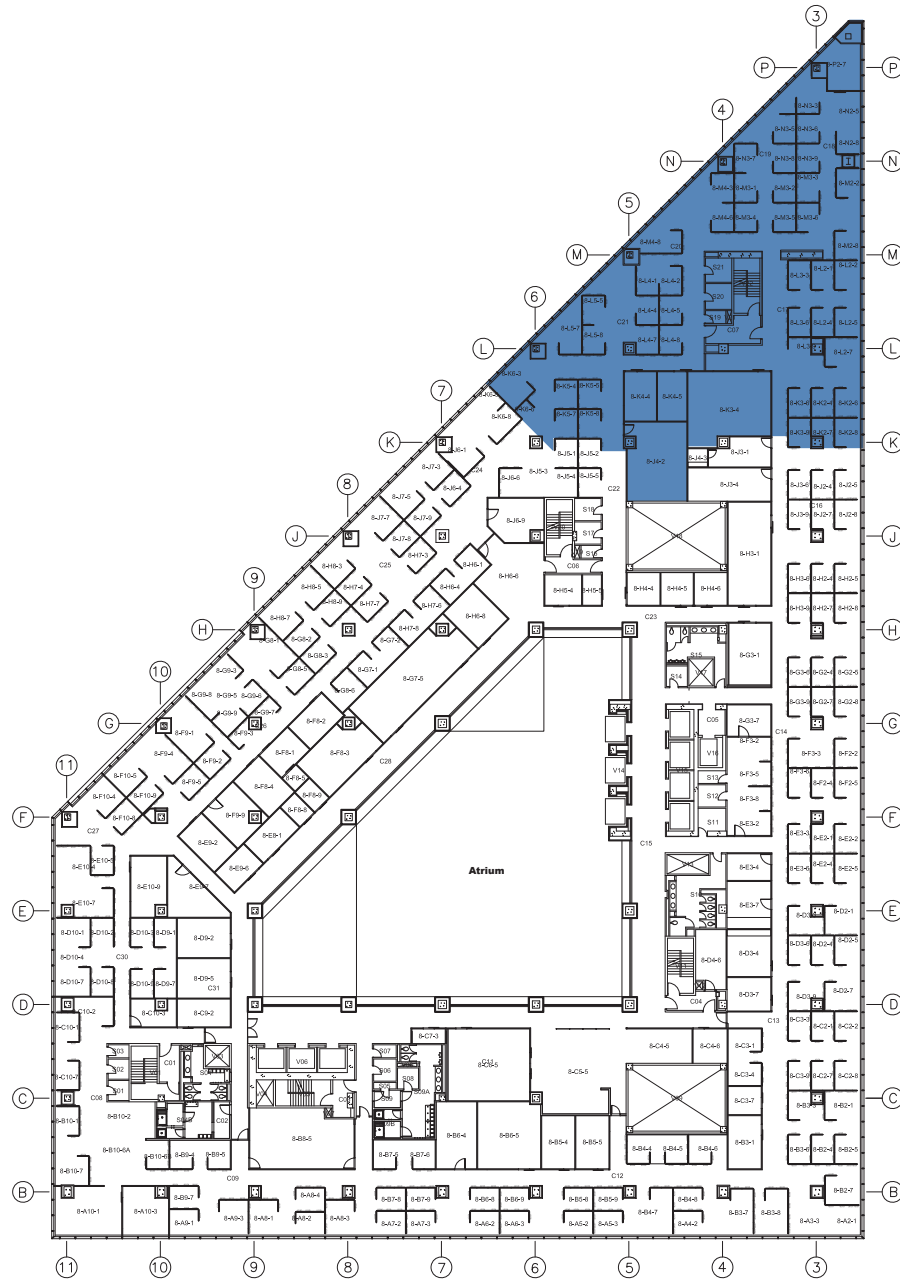


Affected Area



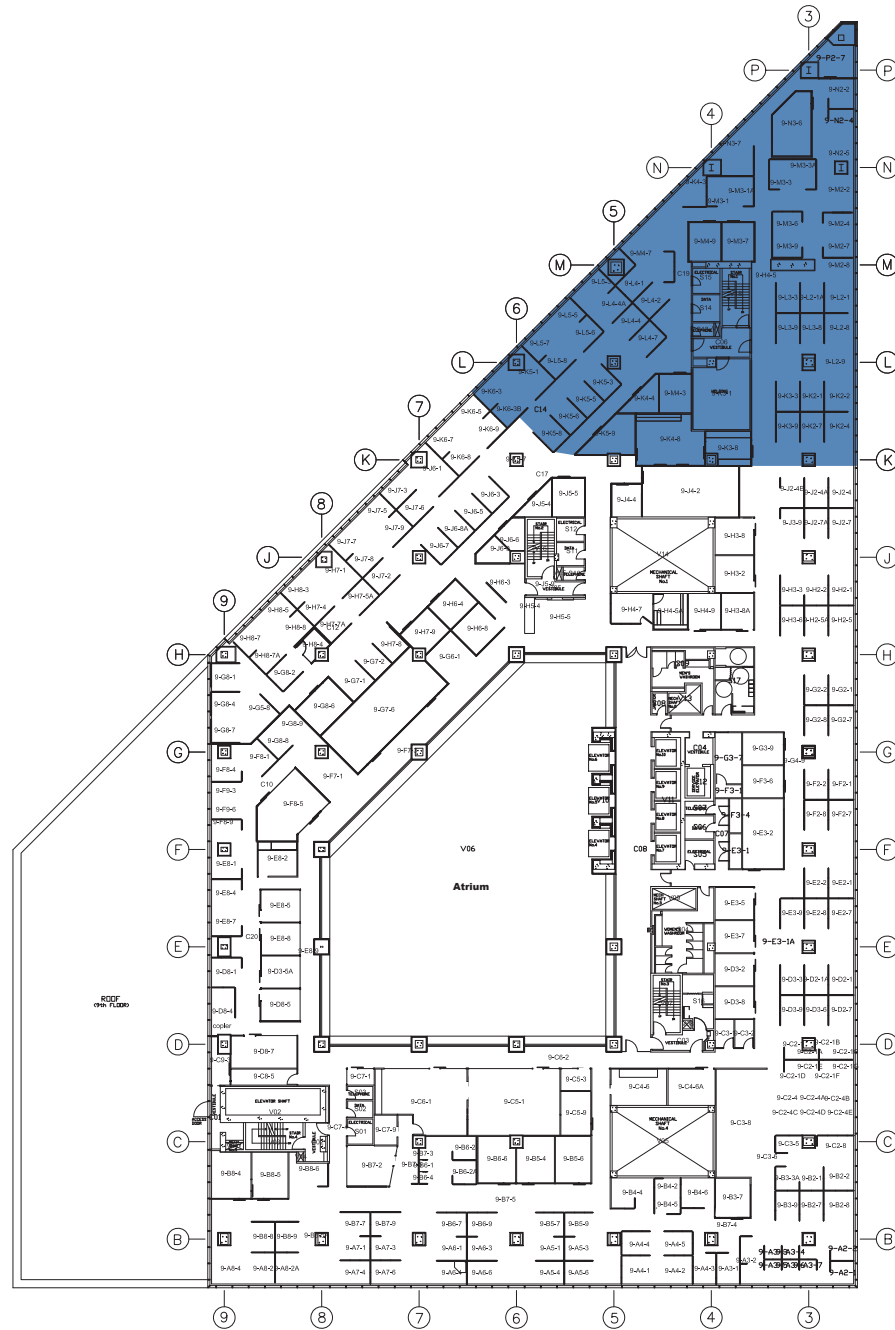
LEGEND:

 Affected Area



LEGEND:

 Affected Area



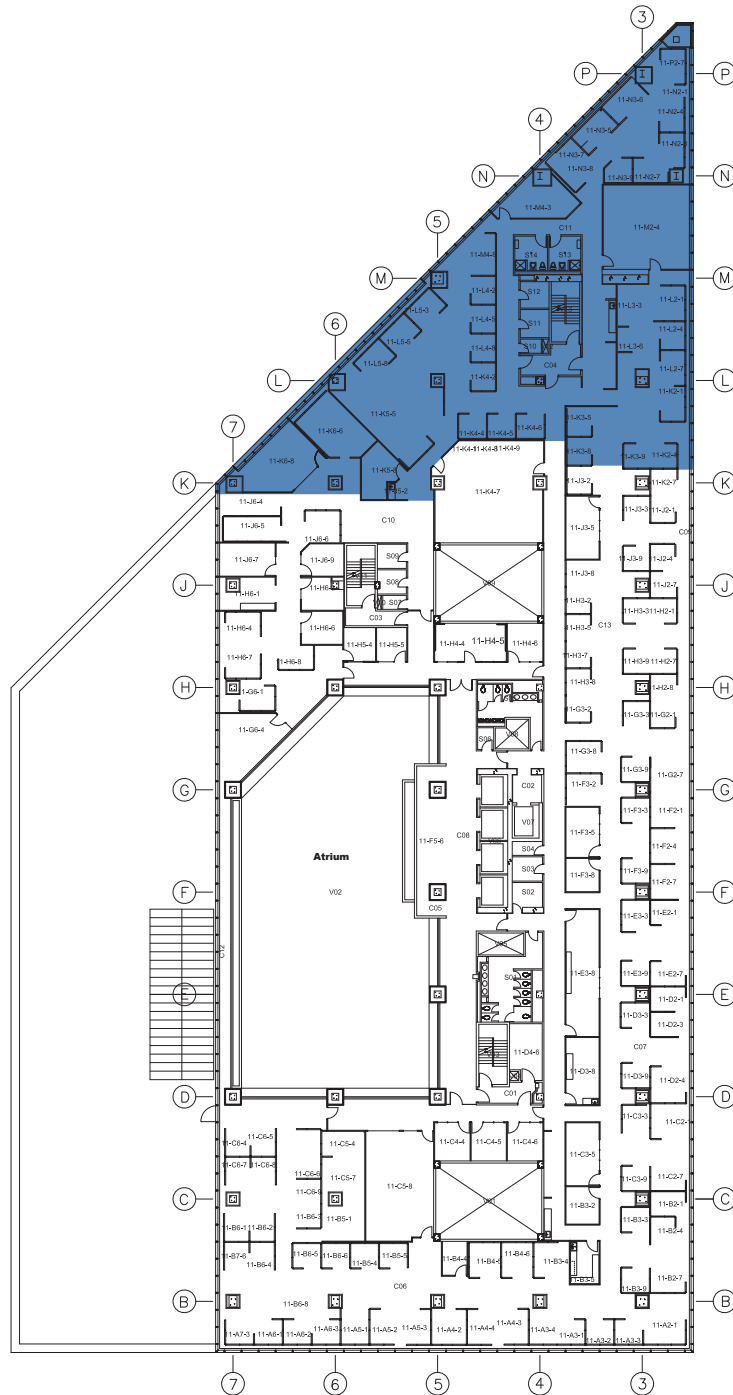
LEGEND:

 Affected Area



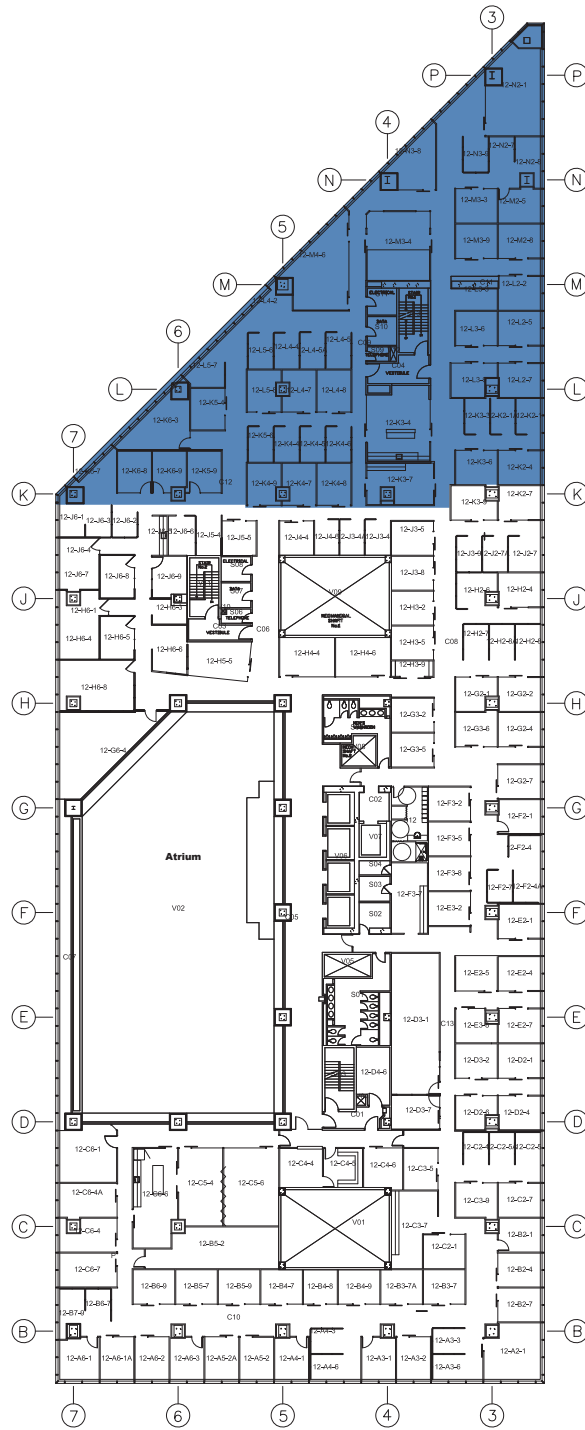
LEGEND:

 Affected Area



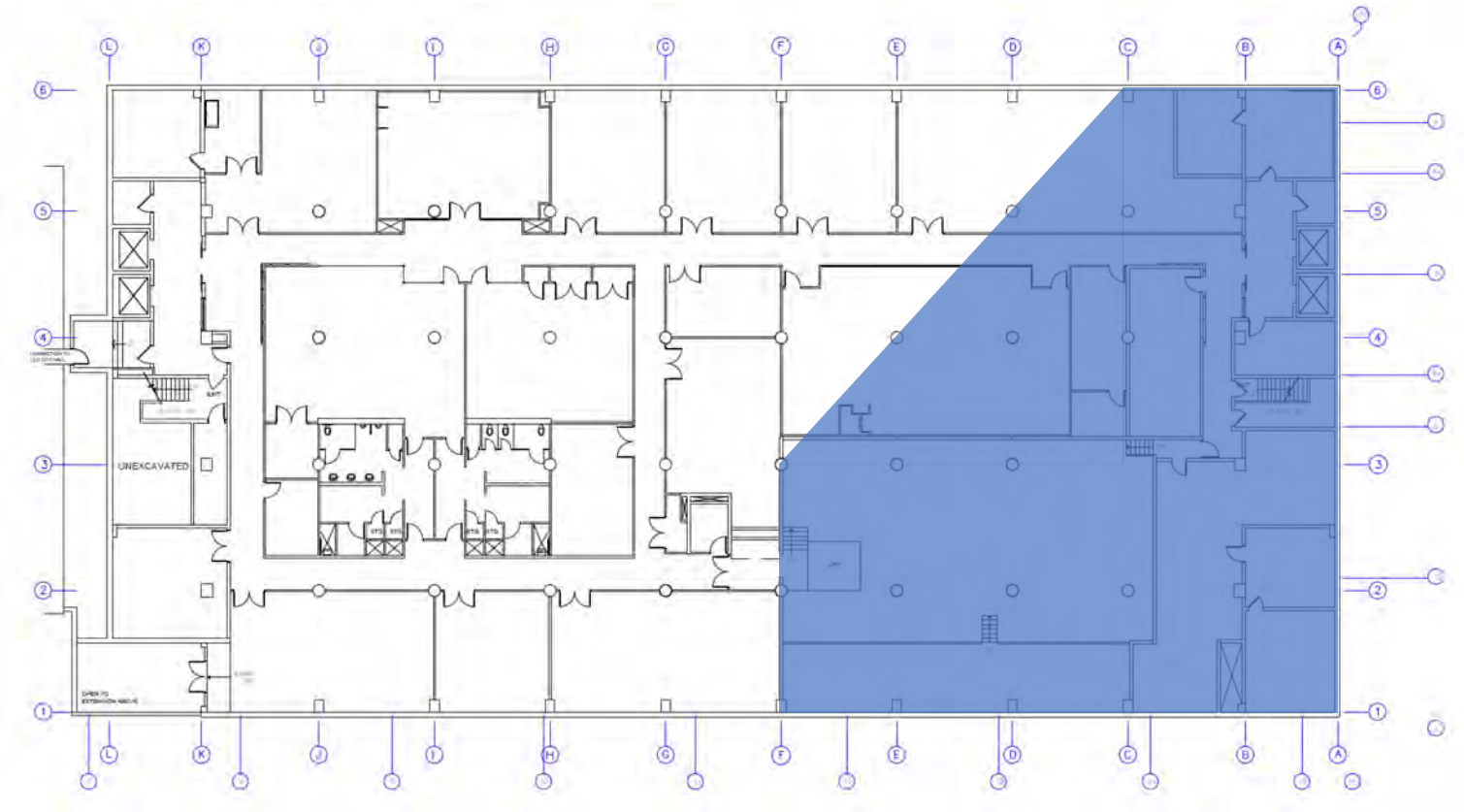
LEGEND:

 Affected Area



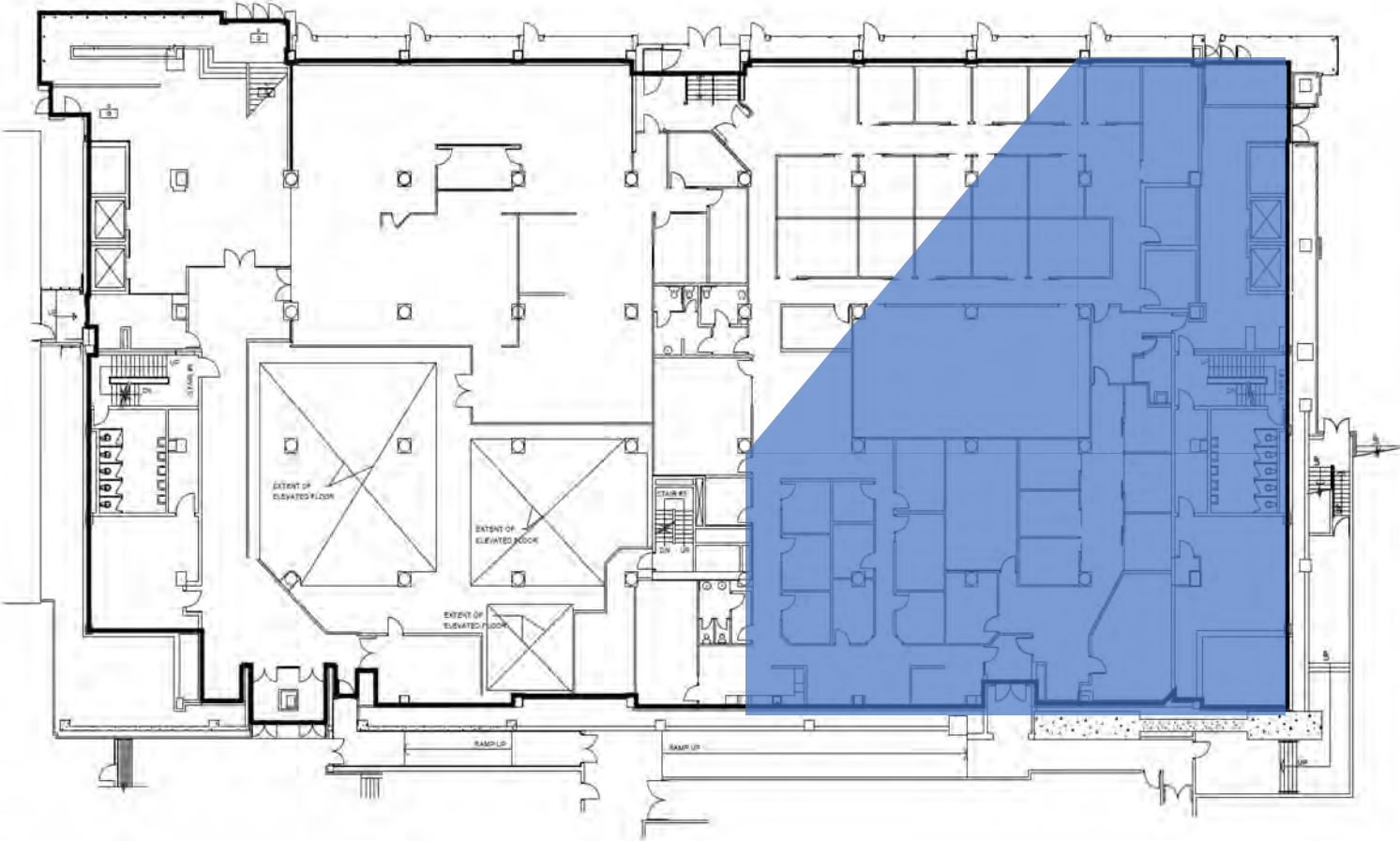
LEGEND:

Affected Area



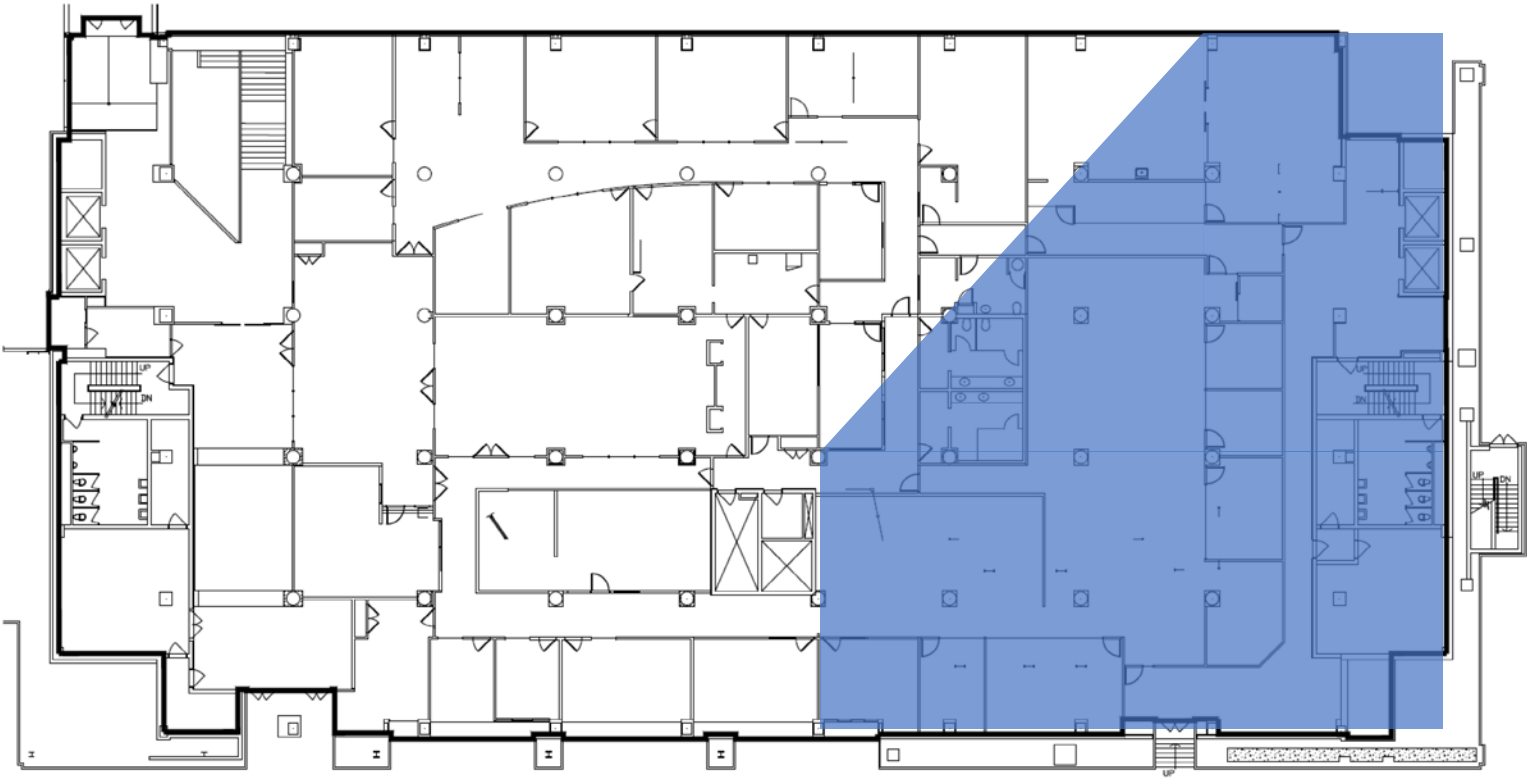
LEGEND:

Affected Area



LEGEND:

Affected Area



LEGEND:



Affected Area



LEGEND:

Affected Area

