

Side Yard of a Typical Retrofit

PUD2018-0475
ATTACHMENT 2

Figure 1 below shows a 1.2 metre side yard and Figure 2 shows a typical exterior insulation project where the wall would be “thickened” by 50mm. The impact of most exterior insulation projects, as shown below, would not be significant. However, without the approval of the proposed amending bylaw, the project depicted in Figure 2 would require a Development Permit for a relaxation of the required side yard.

Figure 1 – Side yard of 1.2 metres

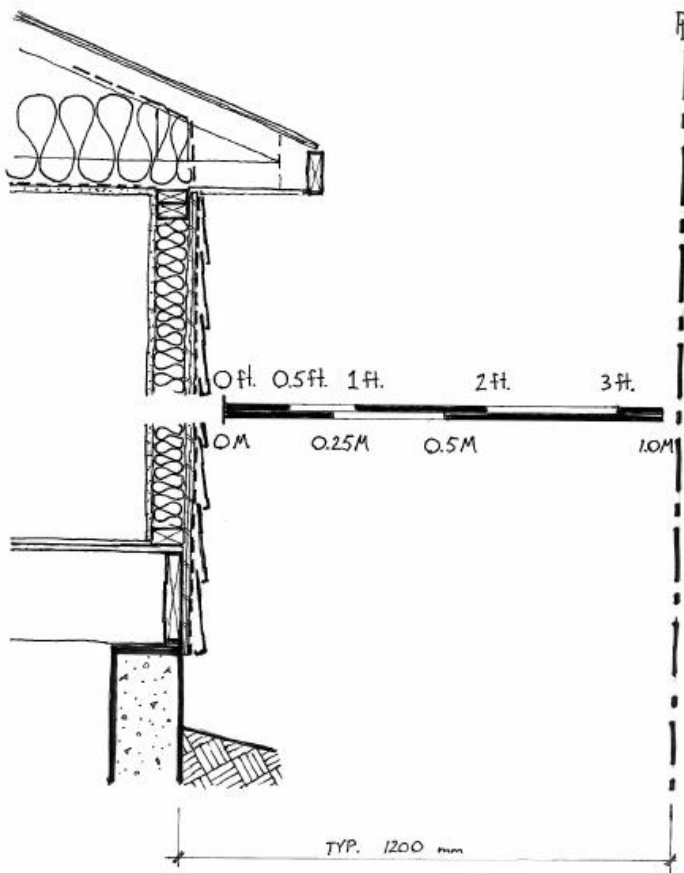


Figure 2 – Typical exterior insulation project with additional 0.05 metres of insulation

