

## Century Gardens Park Update

This information update is being provided to Legacy Parks Fund Steering Committee in advance of the preferred concept plan and Design Development Plan report going to Standing Policy Committee on Community and Protective Services and Council in 2015 Q4 .

### Executive Summary

#### ***Design Development Plan Process & Intent:***

The *Century Gardens Park Design Development Plan* (DDP) is based on historical research, current use analysis, public and stakeholder input and park planning design rationale that will guide the redevelopment of this unique urban park. The DDP examines the park's current layout, dominant features, connection to the street, and the relationship to neighbouring private spaces with the intent of exploring ways to revitalize and celebrate the park's historic elements.

#### ***Project Background:***

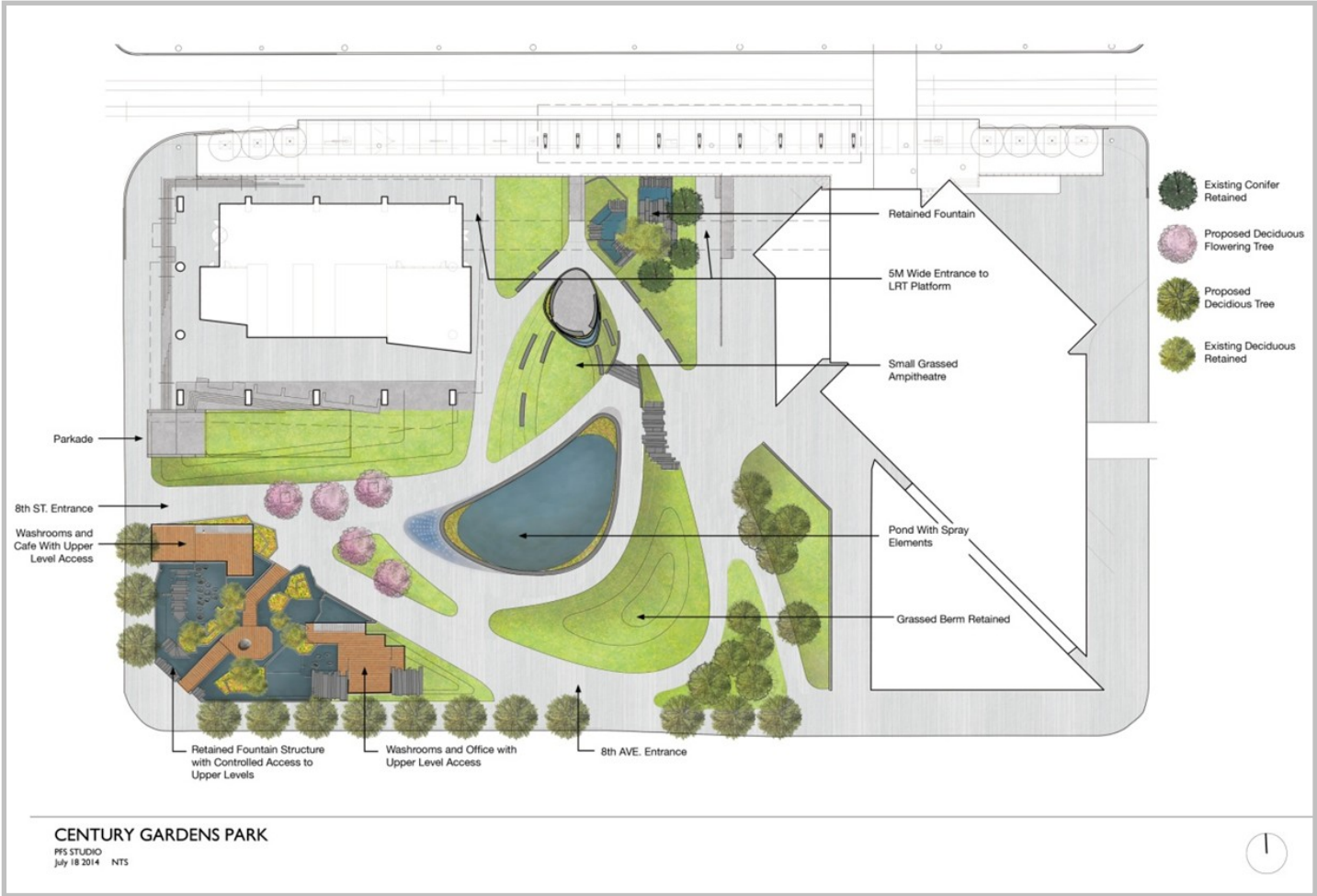
Century Gardens is a unique landscape within Calgary's downtown urban core. The contemporary modern design uses concrete sculptural structures, flowing water and clusters of spruce trees to symbolize Calgary's surrounding landscape; mountains, foothills, and prairie. Century Gardens has been evaluated by the Calgary Heritage Authority and is listed on The City's Inventory of Historic Resources due to its significance as a cultural landscape. The park was built for Calgary's centennial in 1975 as a symbol of the City's growth and maturity. Its design and layout is recognized as a rare, modern form of landscape architecture. Century Gardens has not seen significant changes from its original design in over 30 years. The Park is due for renewal of its aging infrastructure and improvements.

#### ***Features of the Preferred Concept:***

- Most of the precast concrete elements (representing the Rocky Mountains) from the original park design are retained.
- Central grassed berm (representing the foothills) is retained and renewed as a place for informal gathering, sitting, and sunning near the 8 Avenue SW entrance.
- The pond (representing the Bow River) is re-imagined with a contemporary design expression at the elevation surrounding paths and ringed by a seating wall offering users many choices of places to sit and people-watch. The shallow pond is integrated with spray elements that will be activated in the warm months to attract children and families into the heart of the park.
- An expanded path network including wide and inviting entrances from 8 Street and 8 Avenue SW and choices of routes through the park. Paths are generously scaled so that they can accommodate temporary event facilities such as market stalls or moveable seating.
- A new building for a cafe along the south side of the new entry from 8 Street SW.
- The existing office for parks employees is retained in its current location and expanded to include public washrooms.
- Mature, healthy trees are retained where possible and new landscaping will respond to the cultural landscape of the region with trees and grasses in plantings that evoke local character.
- The landscaped island north of the pond is graded to create a small grassed amphitheatre that can be programmed for small performances while offering informal south-facing seating on most days.
- The northwest quadrant of the block is the site for a new building currently in the design process. Conceptual work to date suggests that the 8 Street SW entrance will be the entrance for the new parkade.

Century Gardens Park Update

Preferred Concept Plan





## Century Gardens Park Update

### Century Gardens Rendering

