

VOTE NO TO REPEAL R-CG

A FRAMEWORK FOR IMPROVING THE DISTRICT

PART 1: WHAT WE'VE LEARNED WORKING IN R-CG AND H-GO

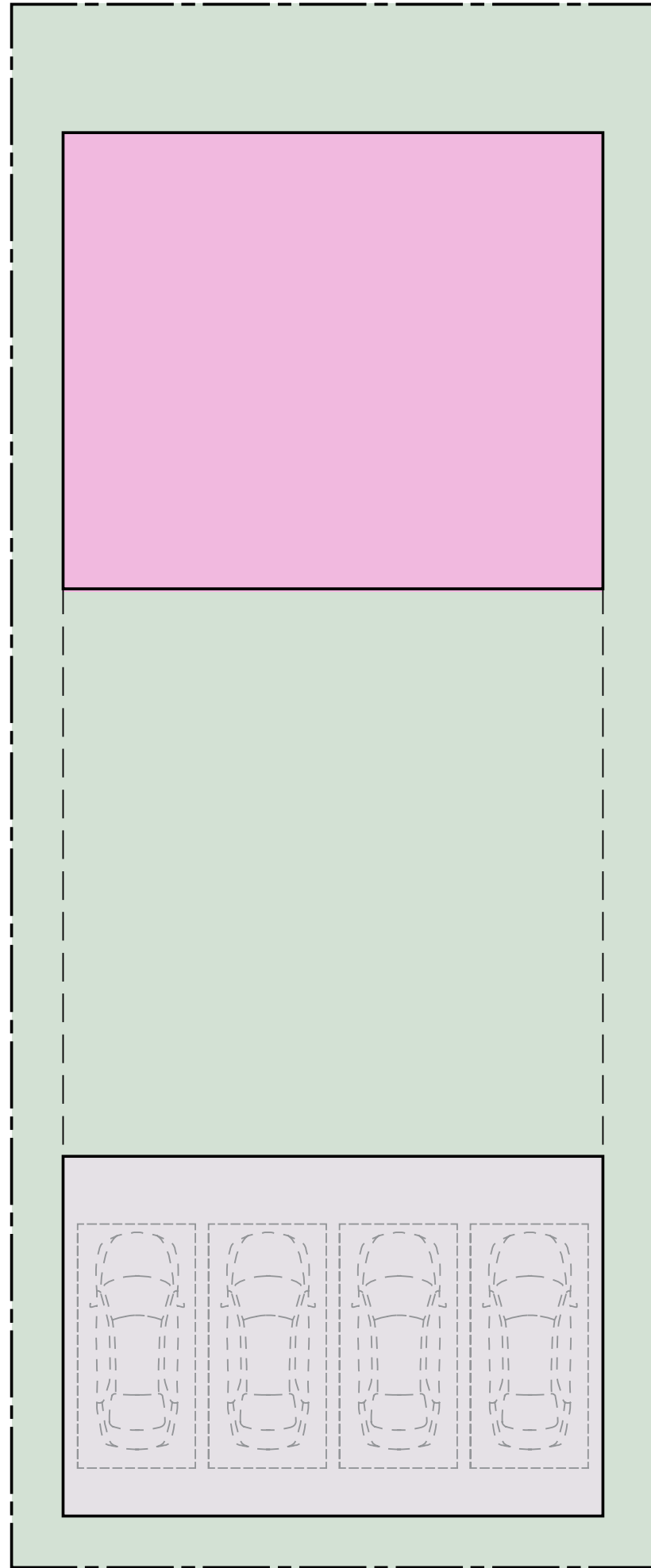
PART 2: A CLEAR BASELINE FOR R-CG

JESSICA STOLLBERT, ARCHITECT AAA, BOLD WORKSHOP ARCHITECTURE

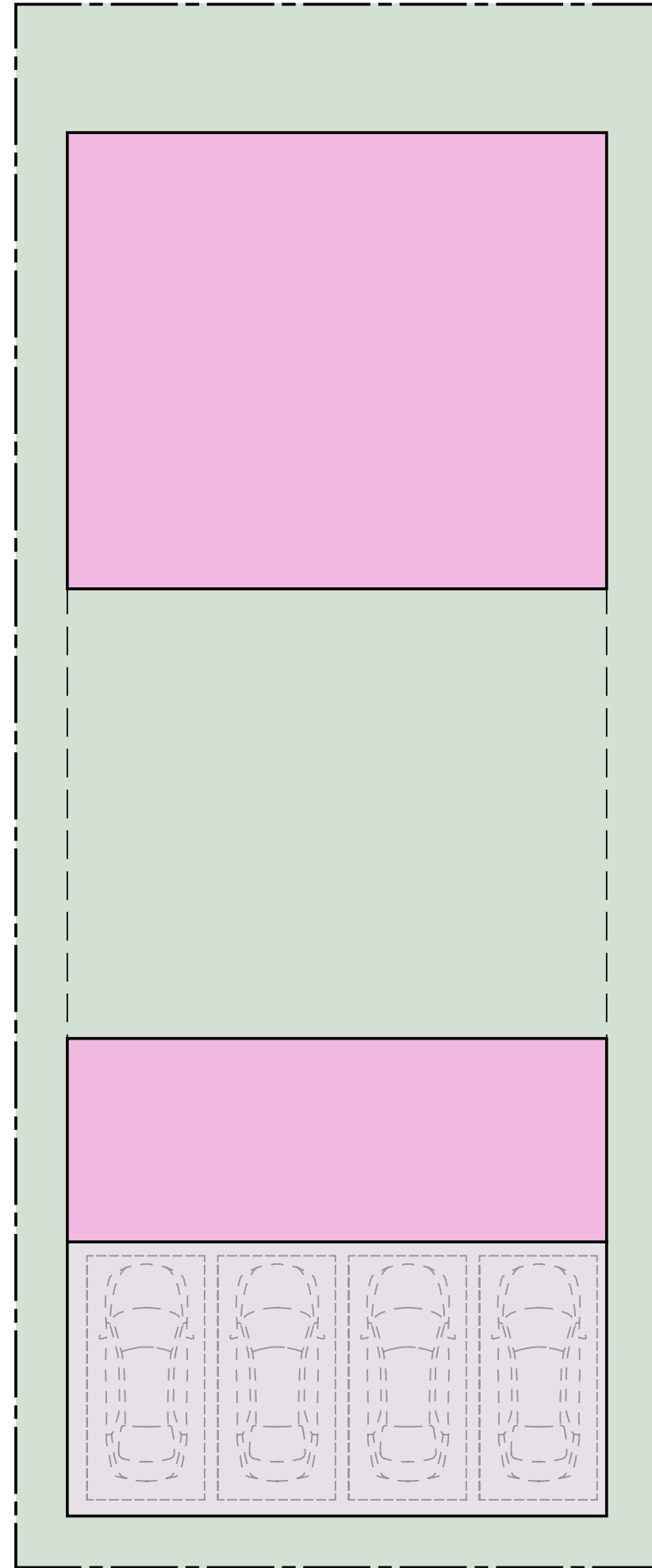
PART 3: STREAMLINED PERMITTING - A PATH TO PERMITTED USE

PART 4: ACHIEVING HIGHER DENSITY CONTEXTUALLY

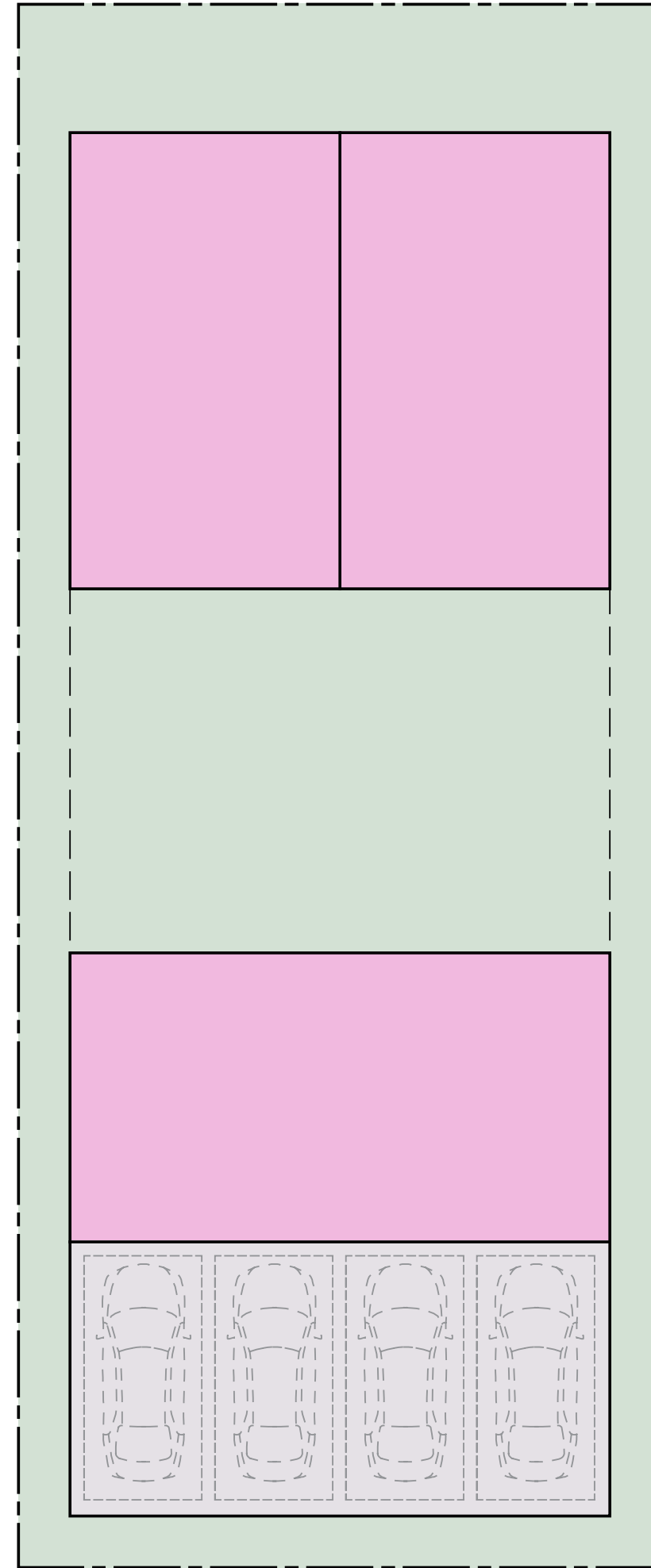
BOLD WORKSHOP ARCHITECTURE + XYC DESIGN ALBERTA REAL ESTATE FOUNDATION + BEA CALGARY



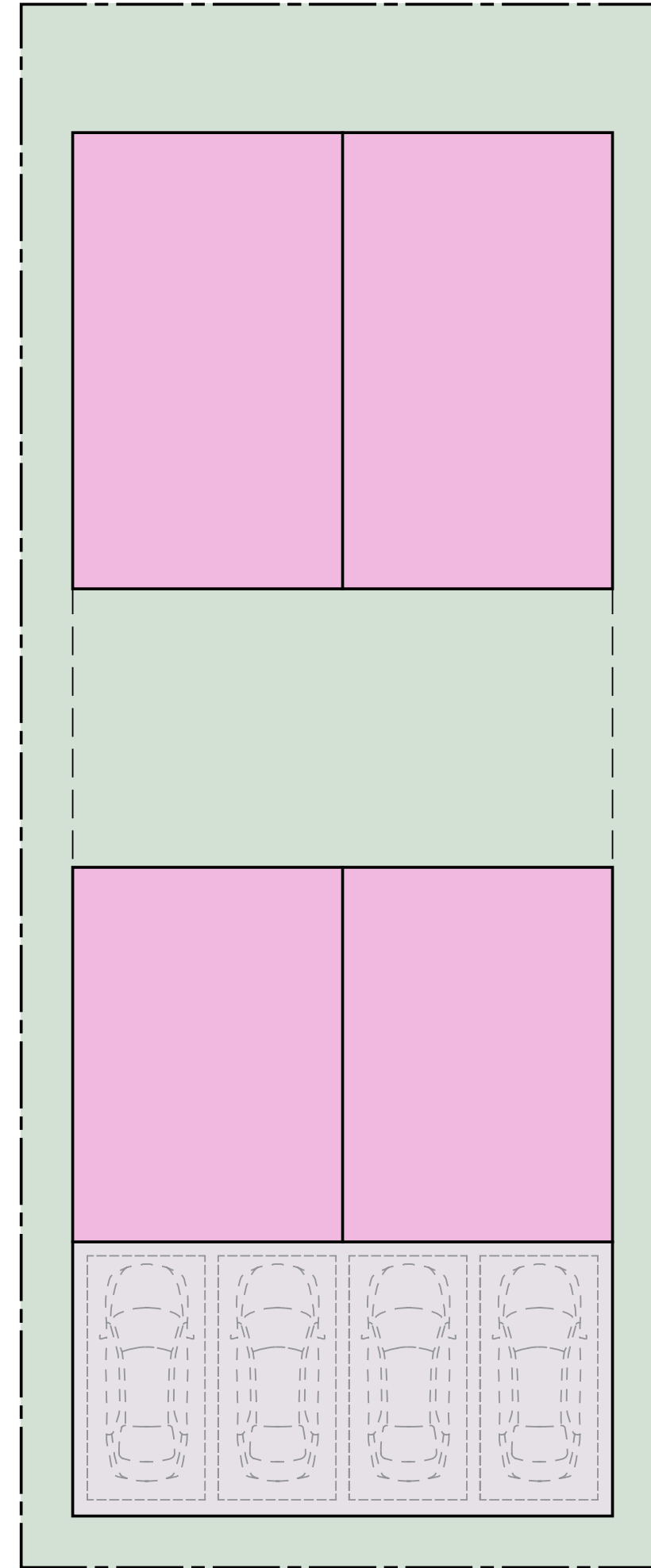
1 UNIT
45% LOT COVERAGE



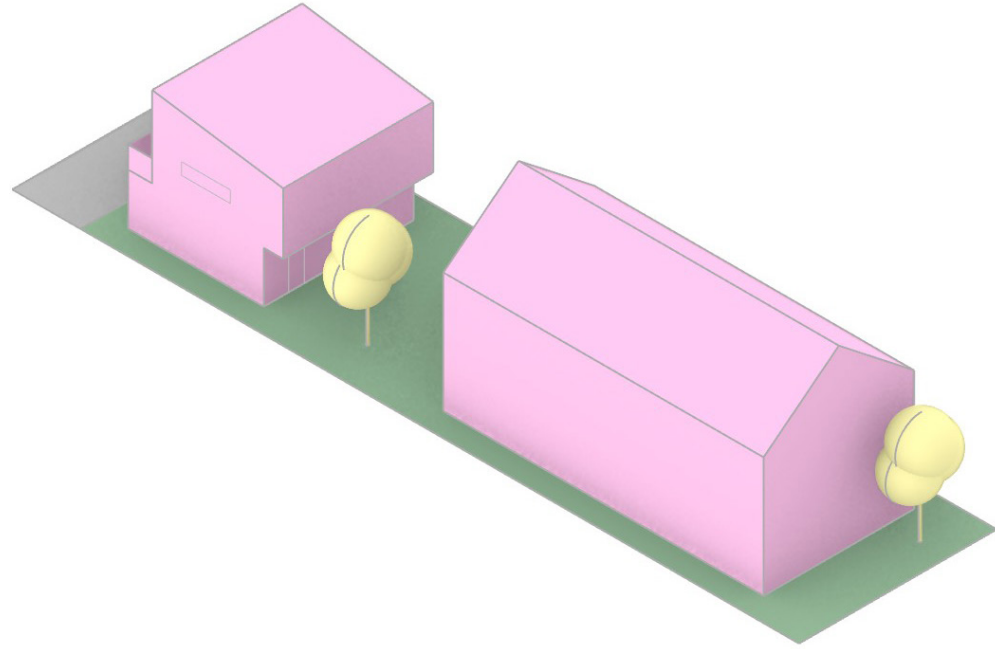
2 UNITS
50% LOT COVERAGE



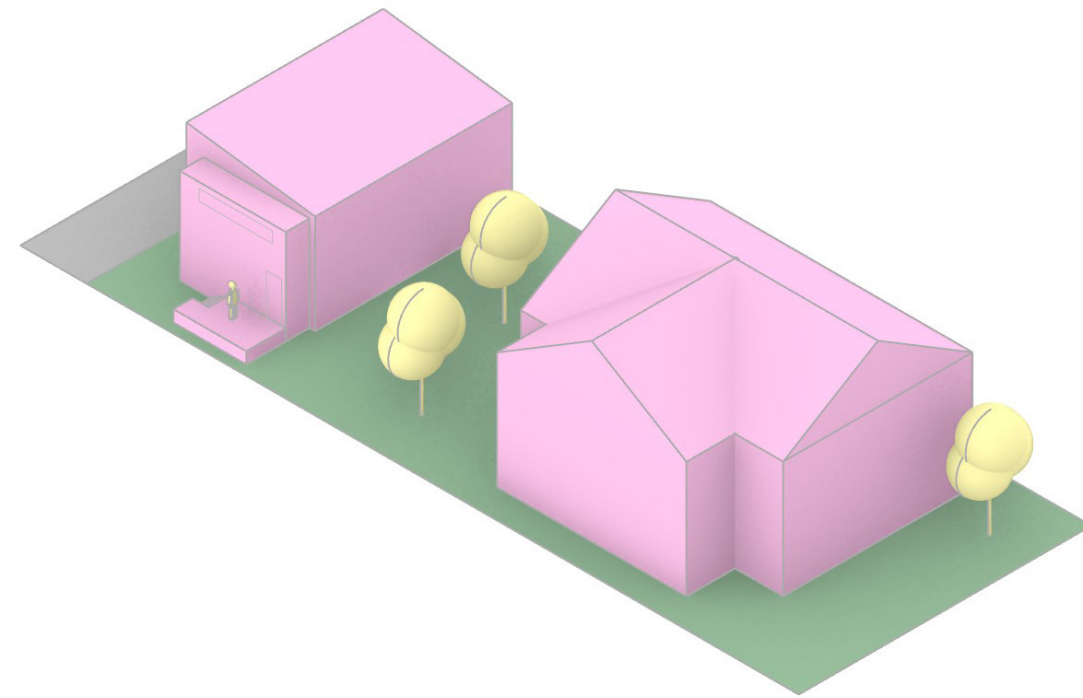
3 UNITS
55% LOT COVERAGE



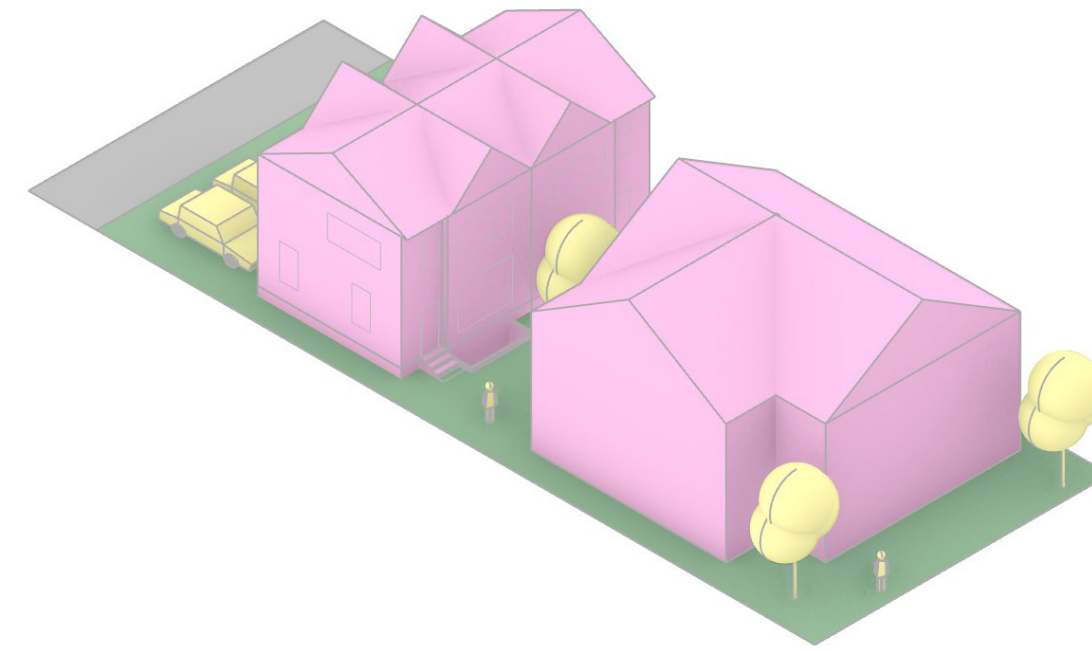
4 UNITS
60% LOT COVERAGE



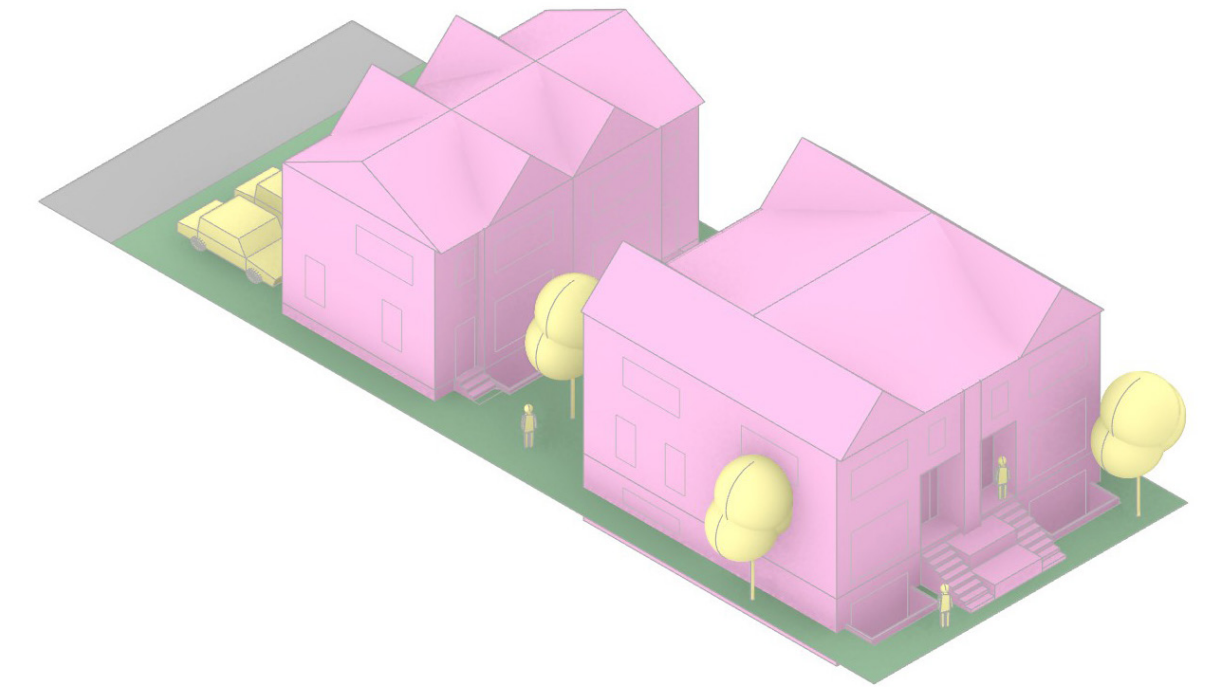
**SINGLE HOUSE WITH
BACKYARD DWELLING**



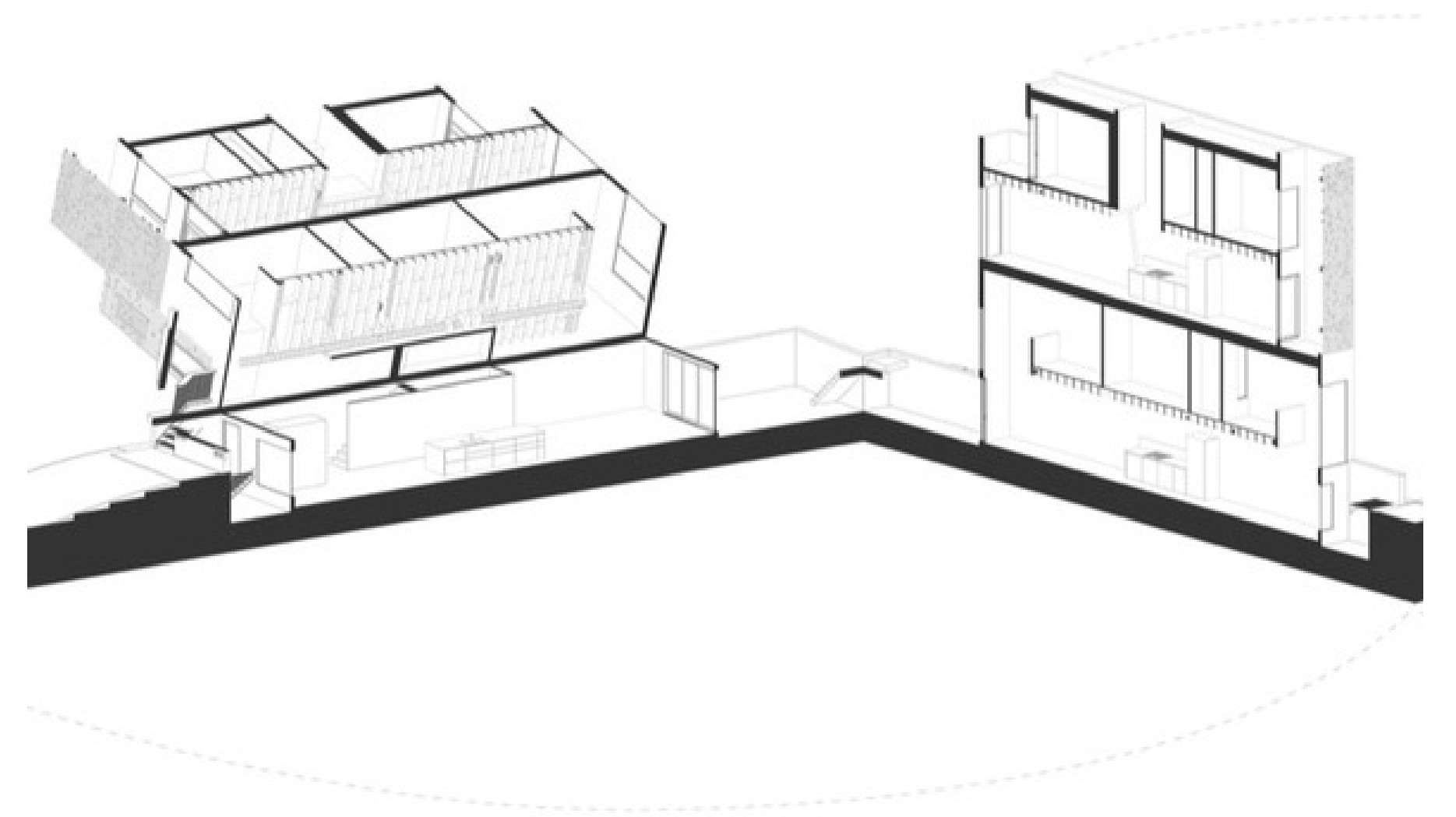
**SINGLE HOUSE WITH
BACKYARD DWELLING +
BASEMENT UNIT**



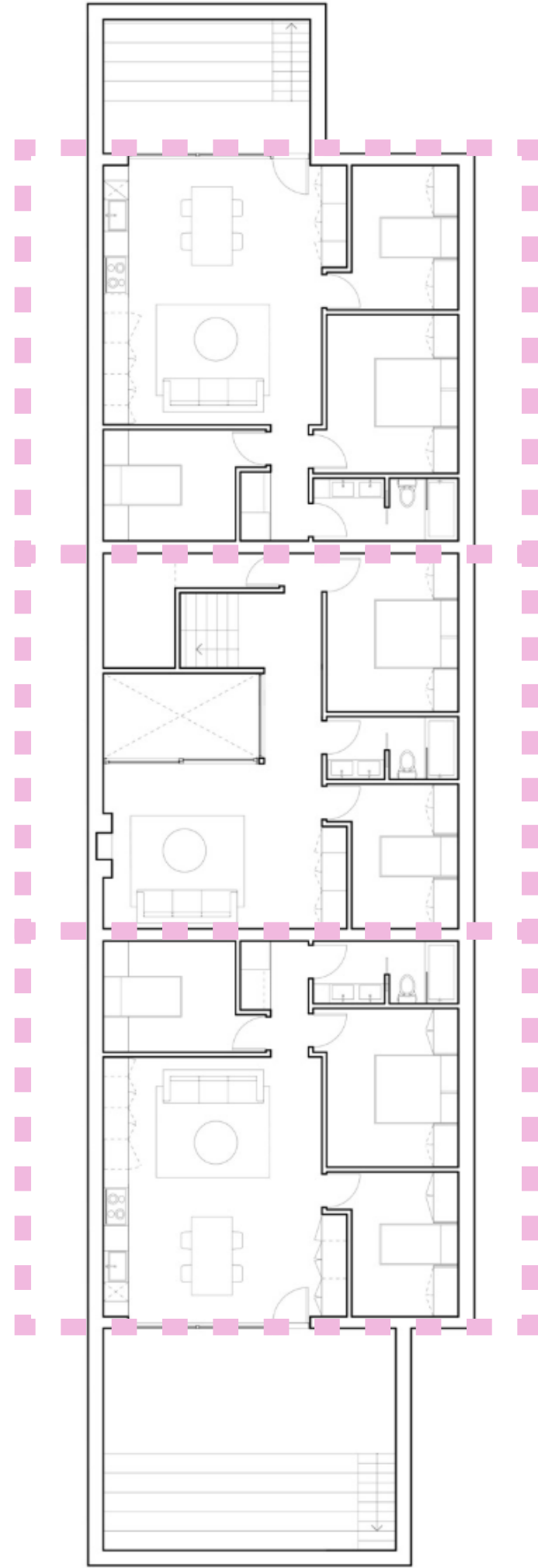
**SINGLE HOUSE WITH A
SEMI-DETACHED**



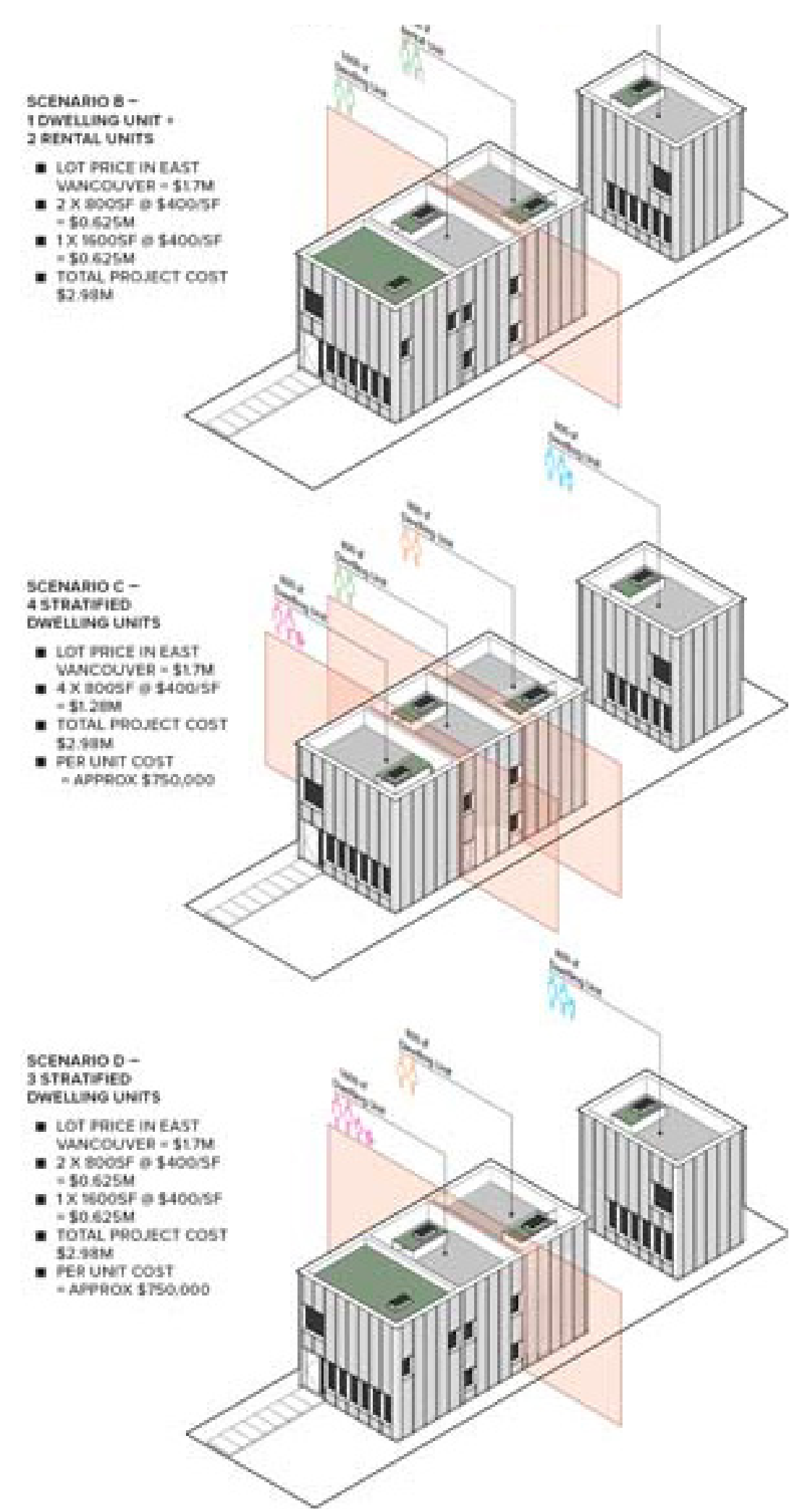
**TWO SEMI-DETACHED
DWELLINGS**



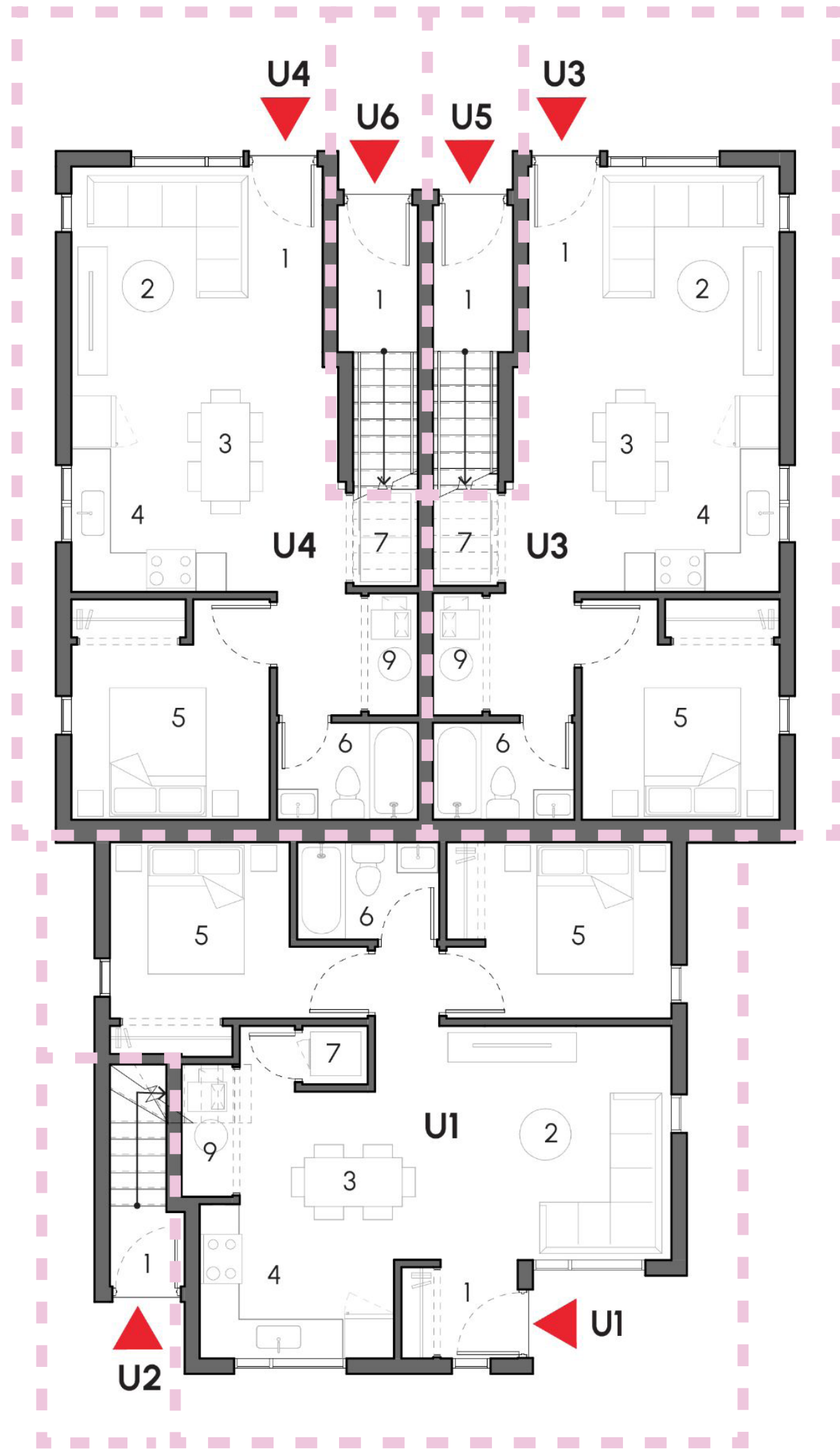
TORONTO INFILLS, BATAY CSORBA ARCHITECTS



TORONTO INFILLS, BATAY CSORBA ARCHITECTS



ADDAPT HOME VANCOUVER, LECKIE STUDIO



SIXPLEX ALBERTA, CMHC DESIGN CATALOGUE