



Accelerated Poplar Tree Replacement and Sidewalk Repair Program Update

March 11, 2026

Presenters: Paul Atkinson, Lead Urban Forestry, Parks and Open Spaces

Charmaine Buhler, Manager Construction and Materials, Mobility

Previous Council Direction

- *Report IP2026-0033*: Report back to the IPC by the end of Q1 2026 with a recommendation for an accelerated program to replace declining poplar trees within 5 m of sidewalks;
- Include the impacts on the urban tree canopy
 - Less than 0.014%
- Recommend for every poplar tree removed that it is replaced with an alternative species, and another poplar tree is planted in a more suitable location;
- Include the financial implications of the poplar tree and damaged sidewalk replacement
 - \$ 17.93 million Capital – unfunded
- Include poplar life cycle planning as part of the Urban Forestry Strategic Plan Update.
 - In development through 2026
- The program is to have no direct cost to citizens

Recommendations

- Direct Administration to use this information to help develop a concrete quality level of service target and associated funding requirements for Calgary's sidewalk network, no later than Q3 2026.
- Direct Administration to use this information to help develop a tree condition level of service and associated funding requirements for Calgary's urban forest network, no later than Q3 2026.
- Direct Administration to report back, through the concrete and tree condition level of service reporting, on progress made to address poplar tree–related sidewalk damage.

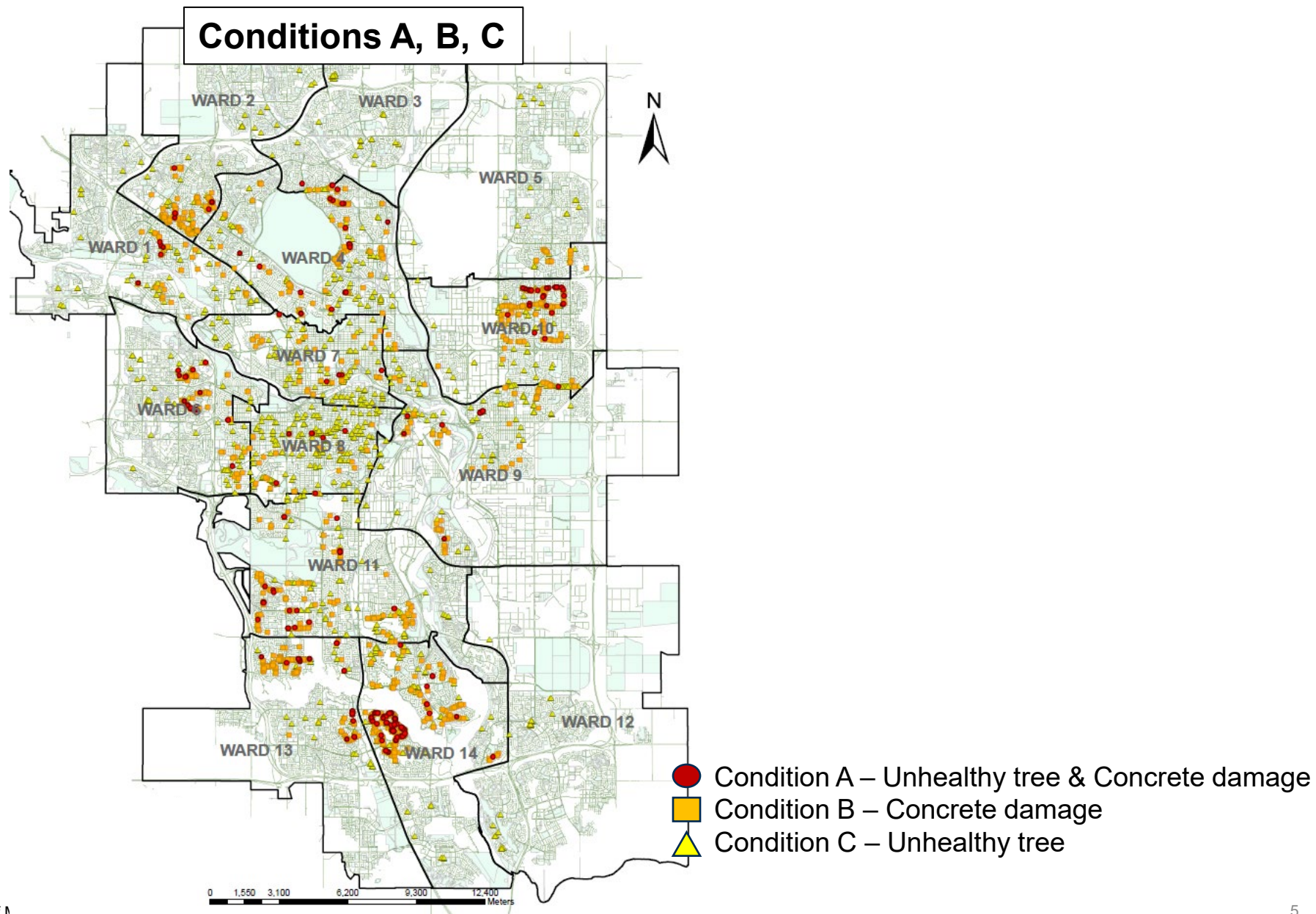
Greatest Impact: Wards 4, 6, 10,11,13 and 14

304 311 SRs citywide (2024 – 2025)

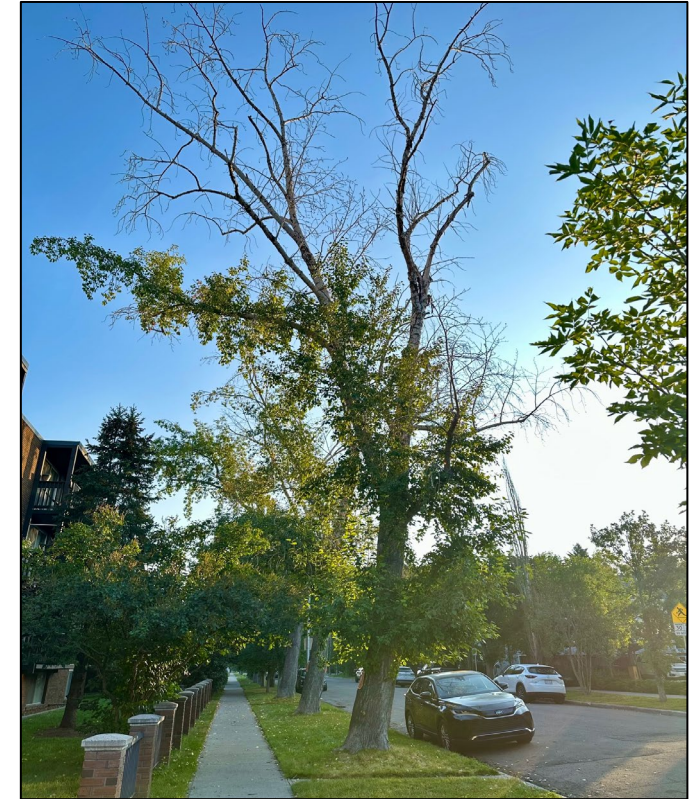
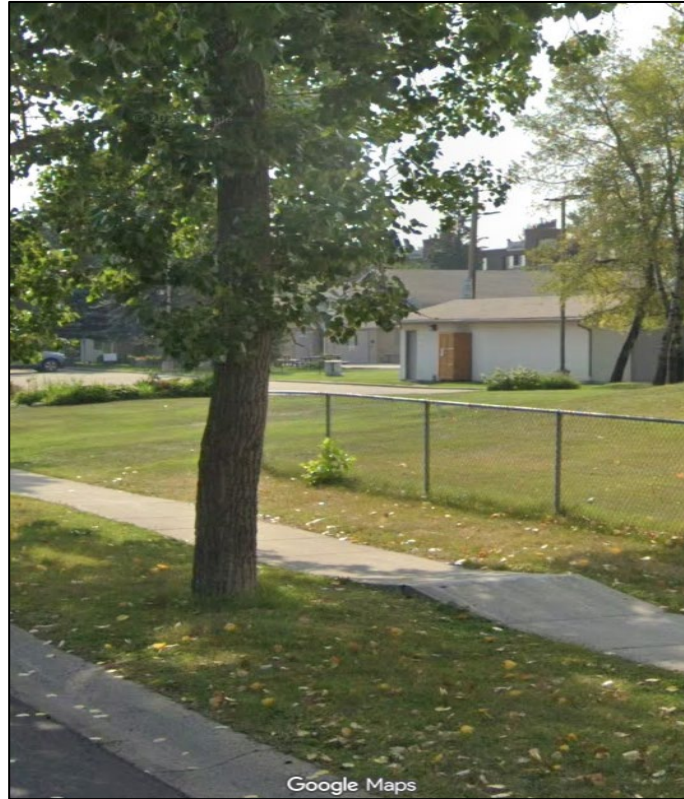
- **Safety Concerns:**
 - Slips, trips, falls, pooling water & ice
- **Property and Infrastructure Damage:**
 - Sidewalks, driveways, garage floors, retaining walls
- **Accessibility:**
 - Hazardous for seniors, mobility aid users, strollers
- **Conflicting Concerns:**
 - Disagreements can occur to retain trees despite damage



Locations of Poplar Damaged Sidewalks



Poor Condition Assets: < 5 meters



Condition A – 292 Trees

Sidewalks: Poor
Poplar Trees: Unhealthy

Condition B – 1,481 Trees

Sidewalks: Poor
Poplar Trees: Healthy

Condition C – 1,438 Trees

Sidewalks: Good Condition
Poplar Trees: Unhealthy



Cost – Sidewalk & Tree Conflict Backlog



- **Poplar Trees**
 - \$17.93 Million

- **All Other Trees**
 - \$30.6 Million

- **Total All Trees:**
 - \$48.53 Million

Service Levels: Trees and Sidewalk Concrete

Tree Lifecycle Service Level

Removal and replacement

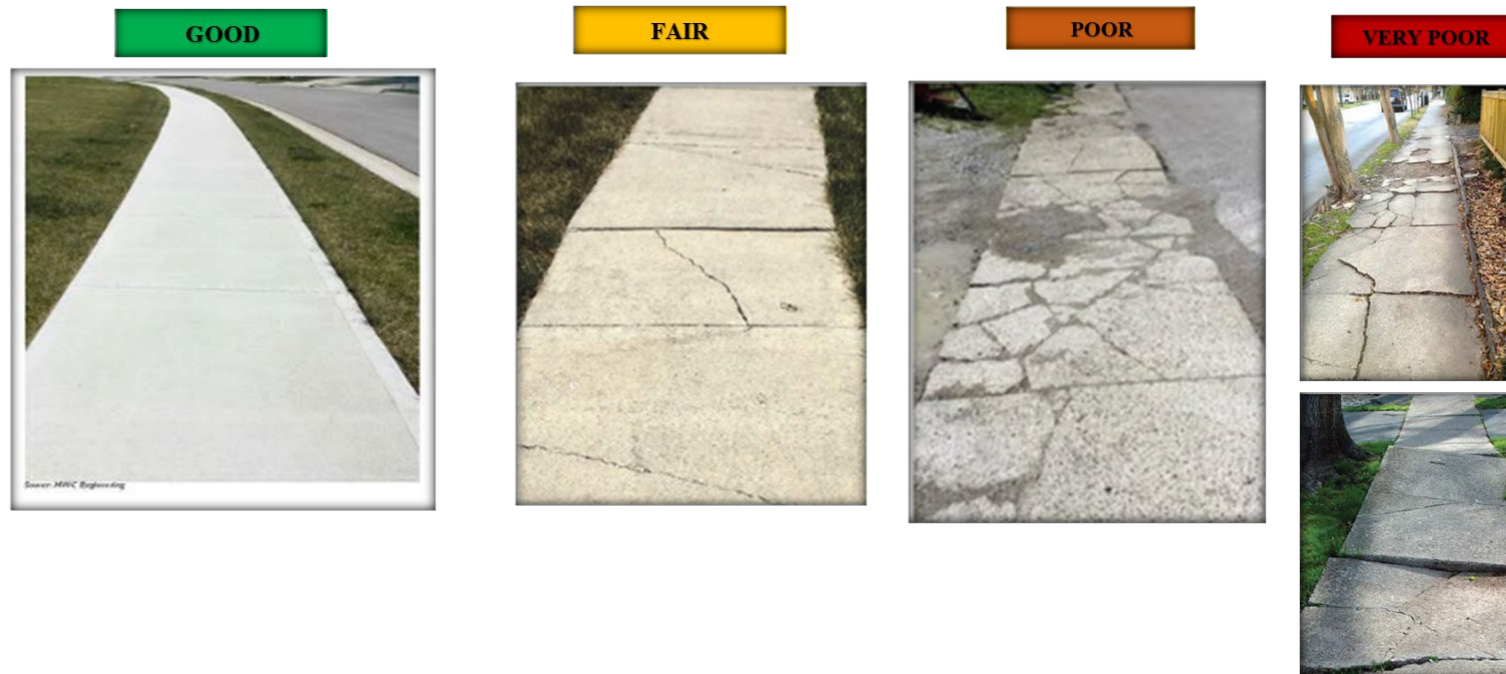
- Asset condition <50%
- < 5 years survival
- Backlog = 39,000



Concrete Rehabilitation

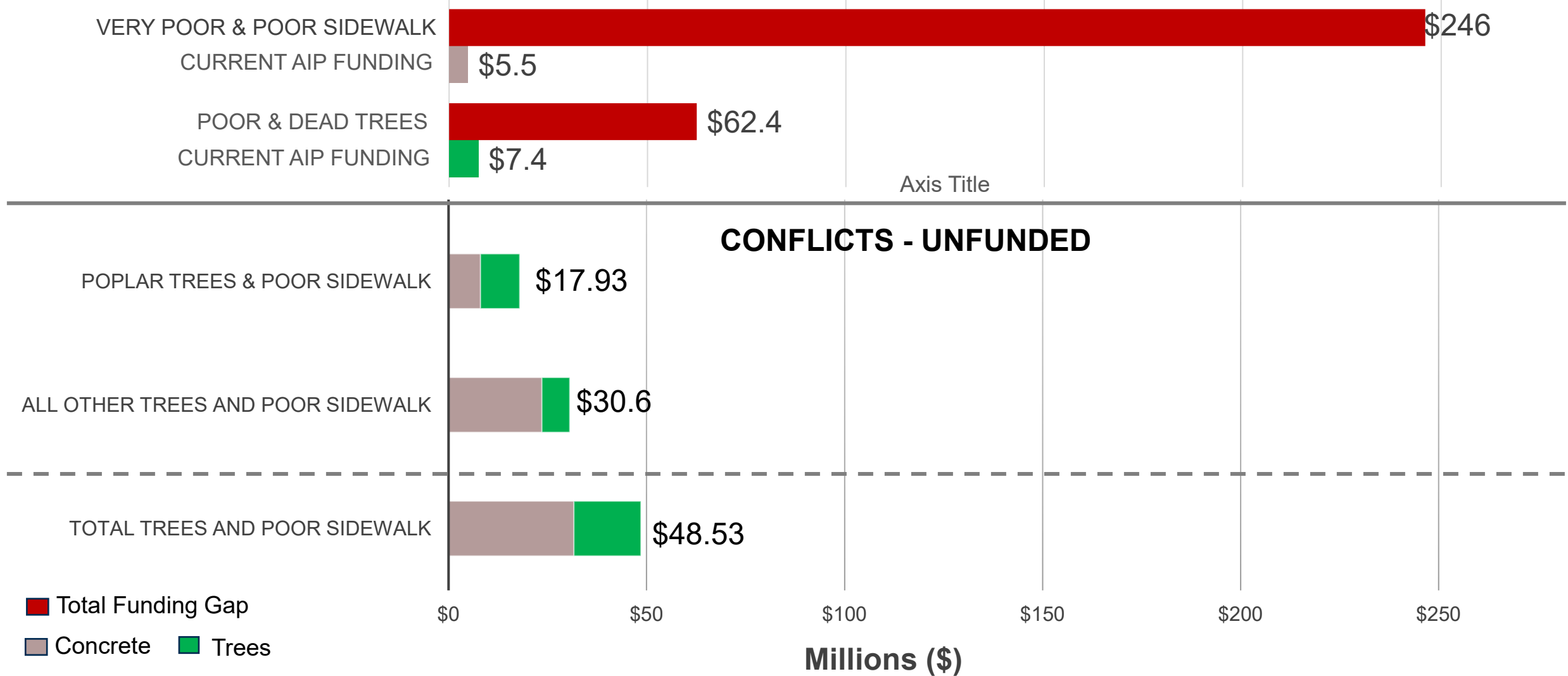
Concrete replacement

- Backlog = 53,321 flags





Total Backlog: Tree and Sidewalk



Recommendations

- Direct Administration to use this information to help develop a concrete quality level of service target and associated funding requirements for Calgary's sidewalk network, no later than Q3 2026.
- Direct Administration to use this information to help develop a tree condition level of service and associated funding requirements for Calgary's urban forest network, no later than Q3 2026.
- Direct Administration to report back, through the concrete and tree condition quality level of service reporting, on progress made to address poplar tree–related sidewalk damage.