



# Public Hearing of Council

Agenda Item: 7.2.3



## LOC2024-0169 / CPC2025-0660

## Land Use Amendment

September 9, 2025

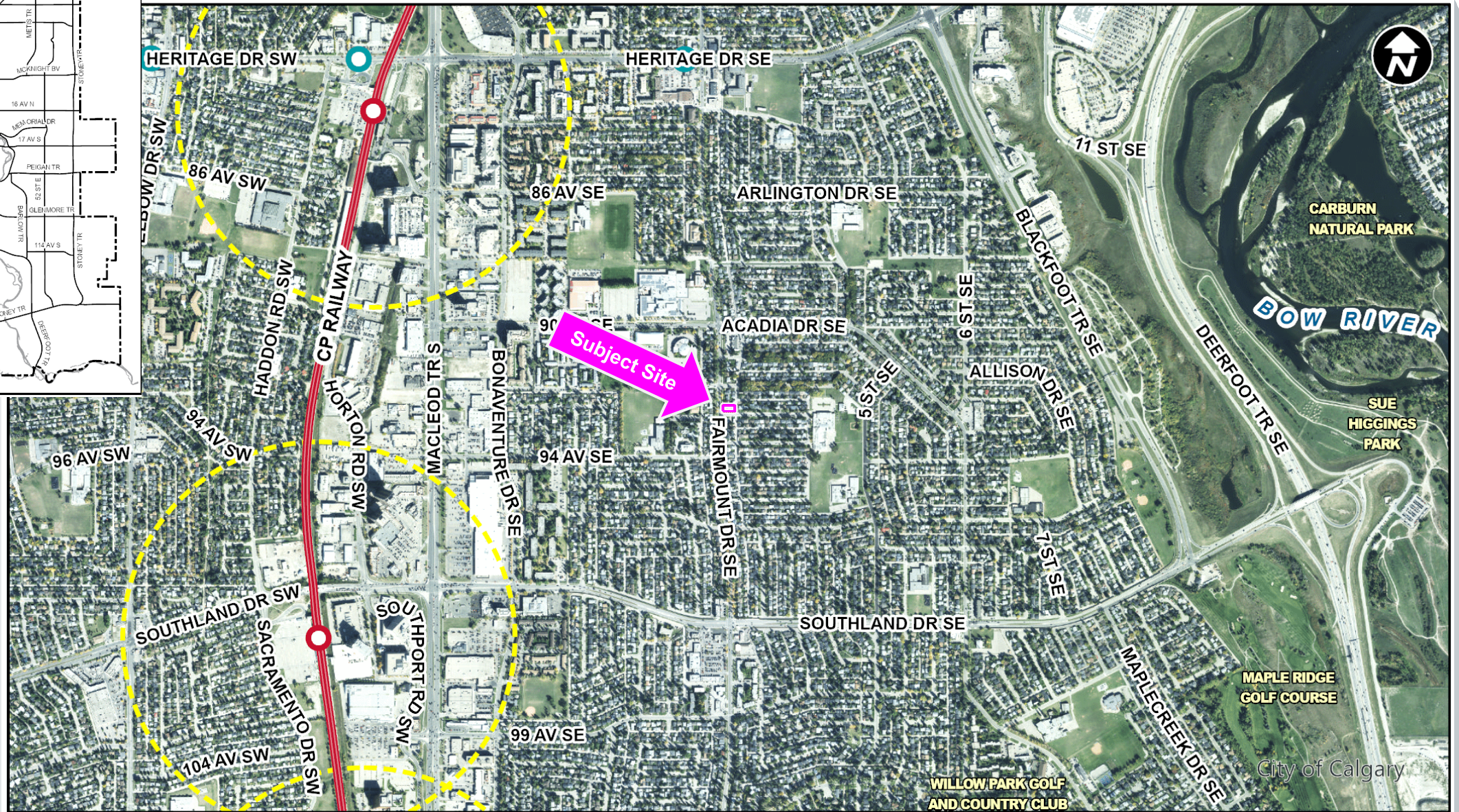
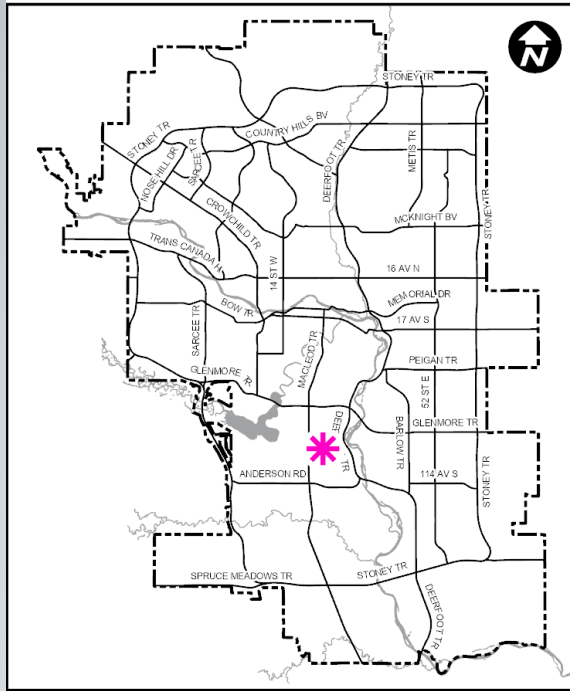
ISC: Unrestricted

CITY OF CALGARY  
**RECEIVED**  
IN COUNCIL CHAMBER  
SEP 09 2025  
ITEM: 7.2.3 CPC 2025-0660  
*Distrib - Presentation*  
CITY CLERK'S DEPARTMENT

## Calgary Planning Commission's Recommendation:

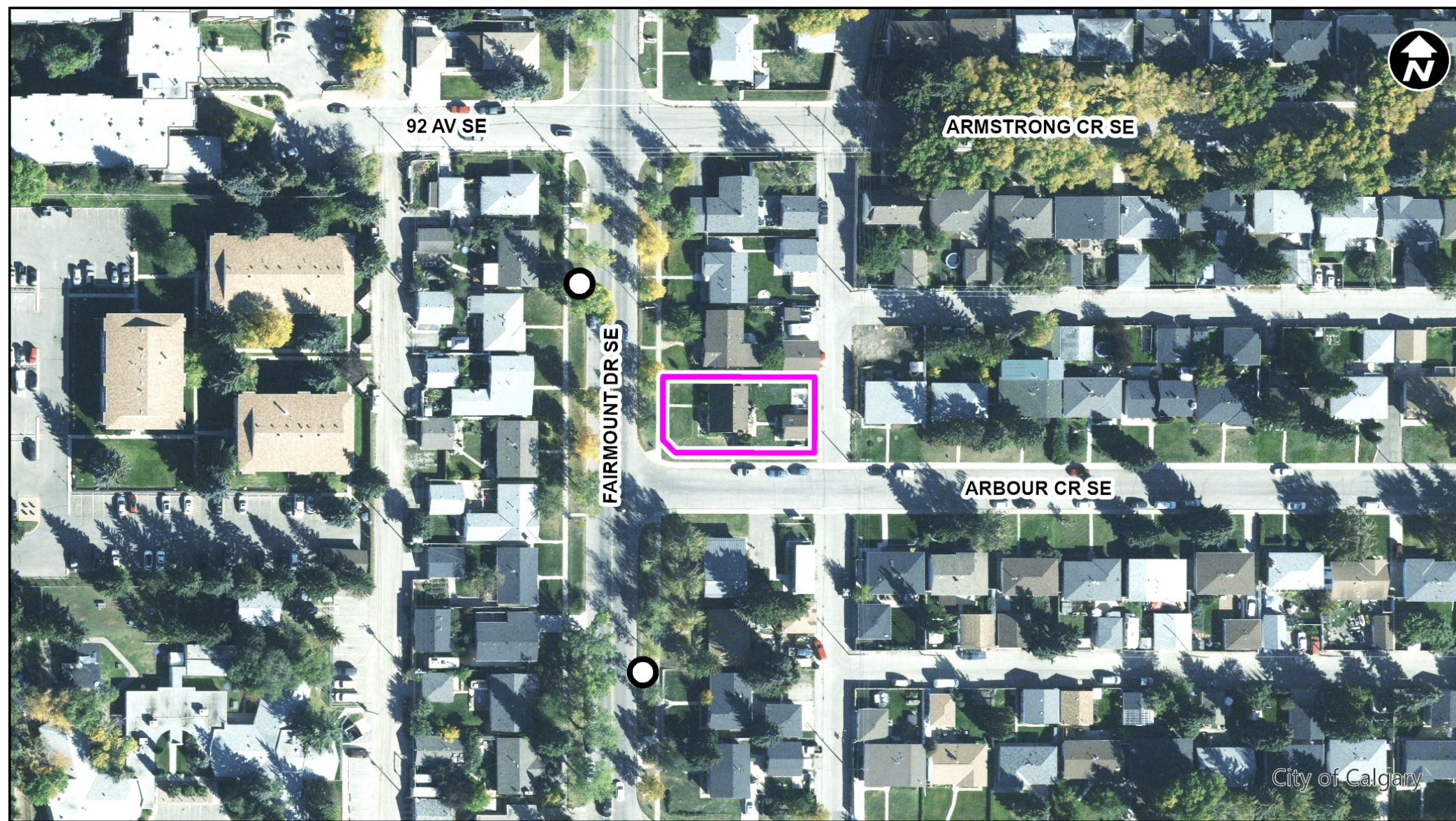
That Council:

Give three readings to **Proposed Bylaw 140D2025** for the redesignation of 0.07 hectares  $\pm$  (0.18 acres  $\pm$ ) located at 9316 Fairmount Drive SE (Plan 2303ID, Block 21, Lot 1) from Housing – Grade Oriented (H-GO) District to Direct Control (DC) District.



**LEGEND**

- 600m buffer from LRT station
- LRT Stations**
- Blue
- Downtown
- Red
- Green (Future)
- LRT Line**
- Blue
- Blue/Red
- Red
- Max BRT Stops**
- Orange
- Purple
- Teal
- Yellow








## Legend

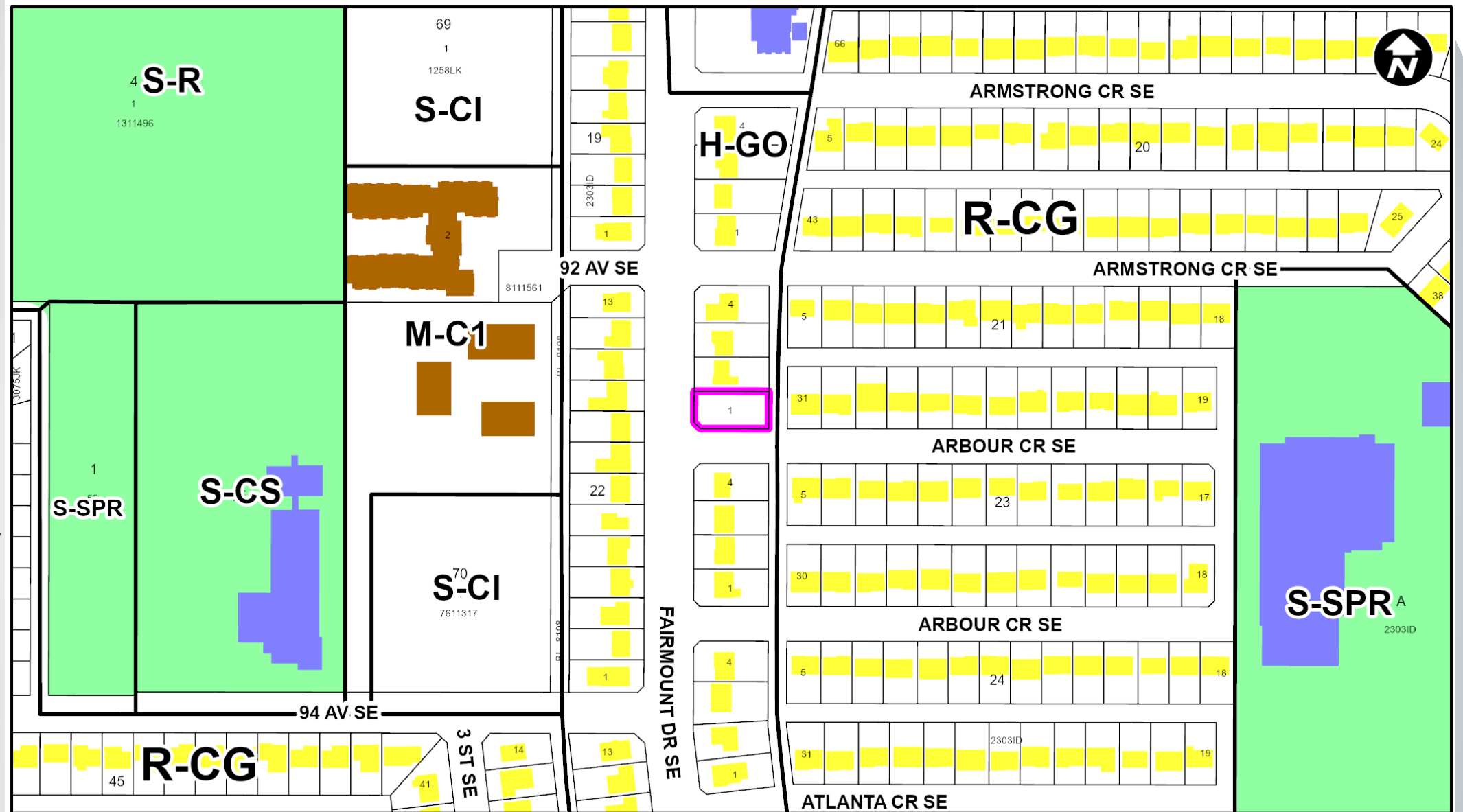
○ Bus Stop

Parcel Size:

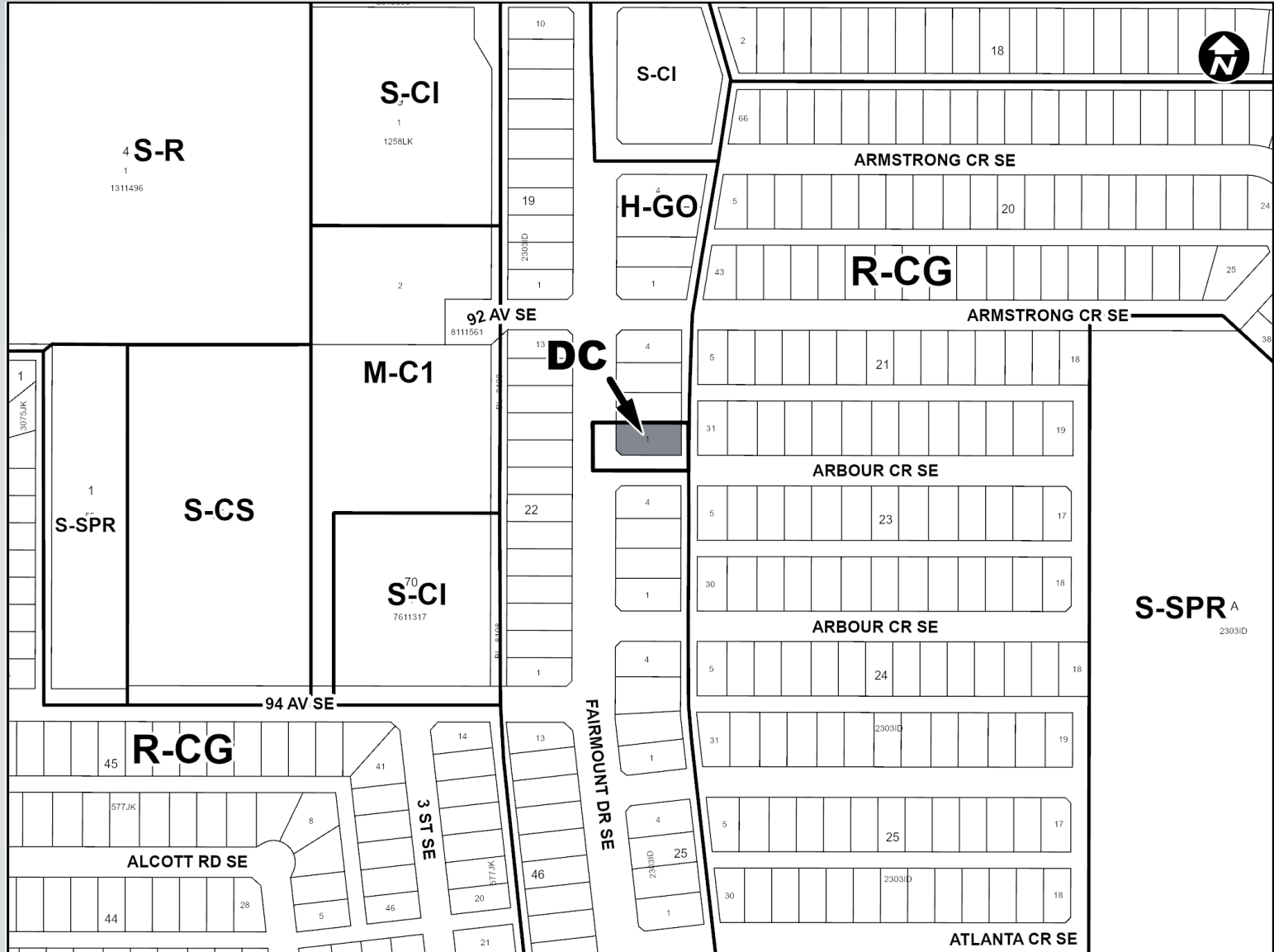
0.07 ha  
37 m x 18 m

### LEGEND

-  Single detached dwelling
-  Semi-detached / duplex detached dwelling
-  Rowhouse / multi-residential
-  Commercial
-  Heavy Industrial
-  Light Industrial
-  Parks and Openspace
-  Public Service
-  Service Station
-  Vacant
-  Transportation, Communication, and Utility
-  Rivers, Lakes
-  Land Use Site Boundary

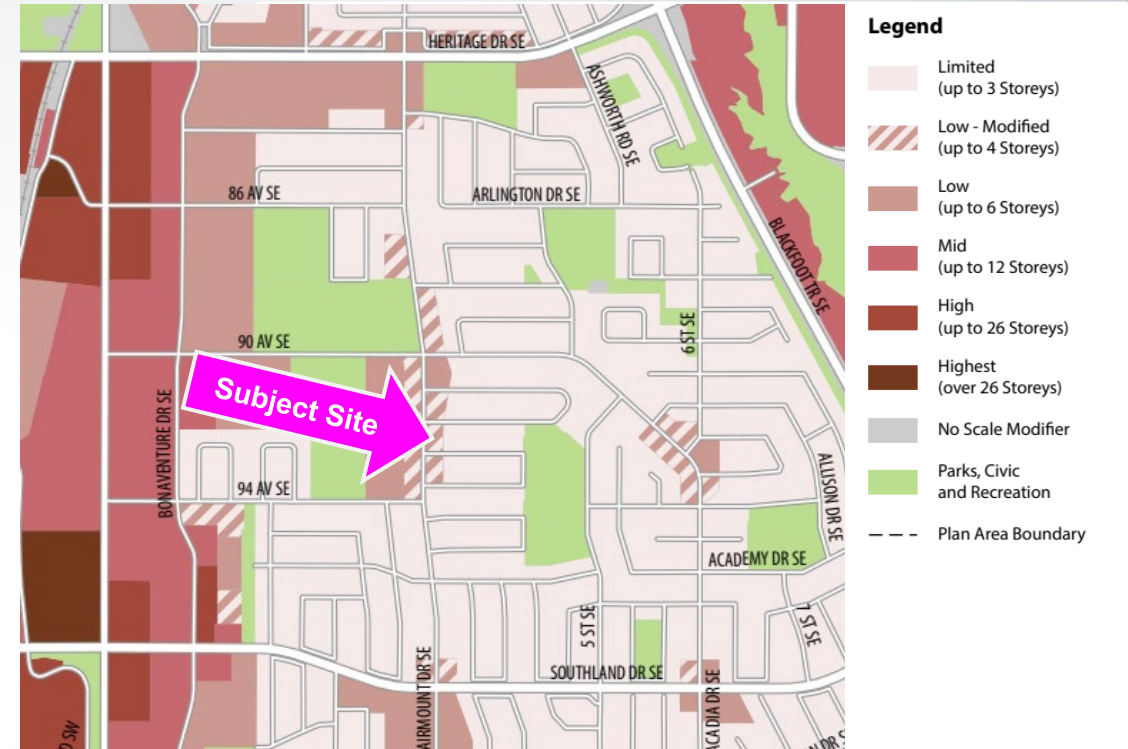
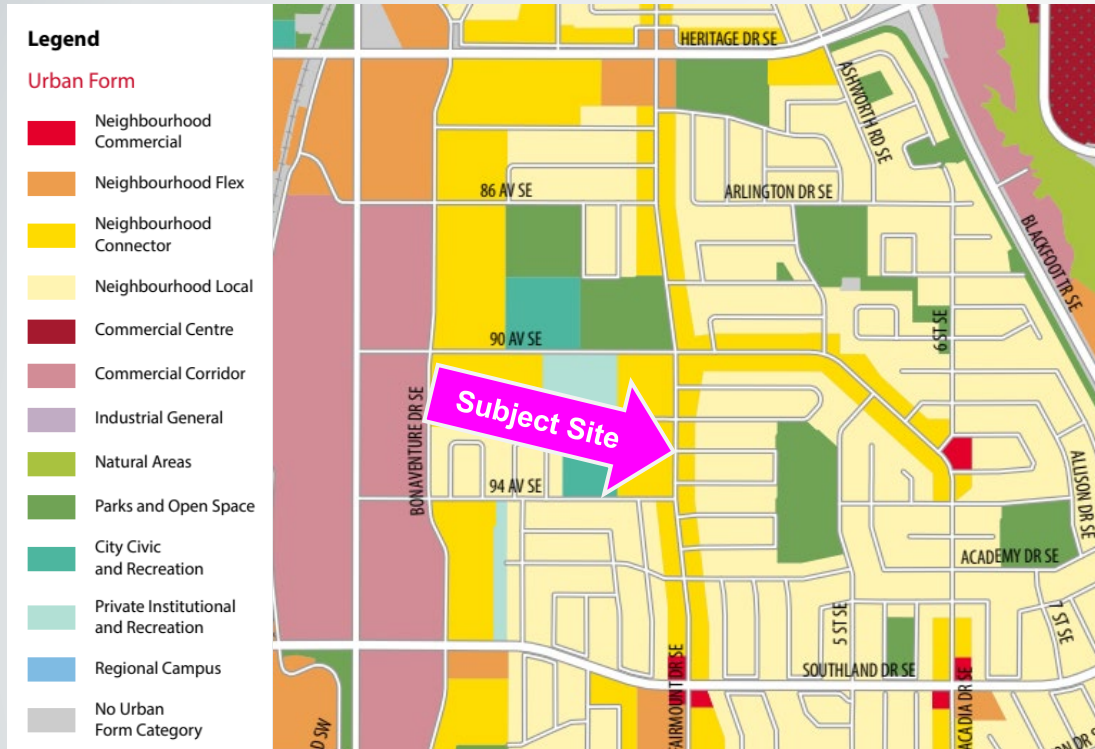


# Proposed Land Use Map



## Proposed Direct Control (DC) District:

- Based on the Housing – Grade Oriented (H-GO) District
- Allows maximum building height of 12.0 metres or approximately three storeys
- Built form to be determined at the development permit stage and must comply with Provincial Legislative requirements



## Calgary Planning Commission's Recommendation:

That Council:

Give three readings to **Proposed Bylaw 140D2025** for the redesignation of 0.07 hectares  $\pm$  (0.18 acres  $\pm$ ) located at 9316 Fairmount Drive SE (Plan 2303ID, Block 21, Lot 1) from Housing – Grade Oriented (H-GO) District to Direct Control (DC) District.

# Supplementary Slides







