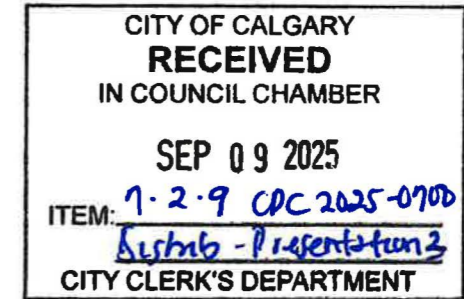


CASA
CAPITAL EXPANSION



CASA Mental Health - Calgary

City of Calgary

Bylaw 1P2007 Land Use Amendment to Direct Control: 142D2022

September 9, 2025

Presenters:

Punit Somaya, Project Manager Capital Expansion, CASA Mental Health

Bianca Dahlman, Intern Architect, Reimagine Architects Ltd.

Todd Urquhart, Project Manager, Clark Builders

CASA Mental Health



▲ Existing CASA Centre in Edmonton for Adolescent Day Program

- **CASA = Child and Adolescent Services for All**
- Amendment will support adolescents aged 12-18 in proposed:
 - **Adolescent Day Program**
 - **CASA House (Stay Program)**

Rationale for Amendment



Alignment with The City of Calgary & Community Needs

Calgary is home to **over 300,000 children and youth**, with **~6,500** already seeking **mental health** support each year.

The Project Vision is to provide a healing-centred, trauma-informed, and culturally safe facility that:

- Expands access to serve **thousands more youth and families annually.**
- Reflects the histories and cultures of **Indigenous communities, and Calgary's diverse population.**
- Creates purposeful, flexible spaces that embody CASA's values of **compassion, collaboration, and innovation**, while linking with schools, hospitals, and community partners.

Outcome: Provide a Calgary-based facility that closes critical gaps in youth mental health services, strengthens community integration, and empowers children, youth, and families to thrive.

Proposed Amendment



▲ Existing CASA House in Sherwood Park (Edmonton Metro Region) for Stay Program

Land Use Amendment & Definition

CASA requests a Land Use **Amendment to add Residential Care** as a permitted use to the site in order to develop a youth mental health facility for children aged 12-18.

Residential Care is a use within the Care and Health Group in Schedule A. It is a use where social, physical or mental care is provided to five or more persons who live full time in the facility; and that has at least one staff person at the facility at all times when at least one resident is within the facility.

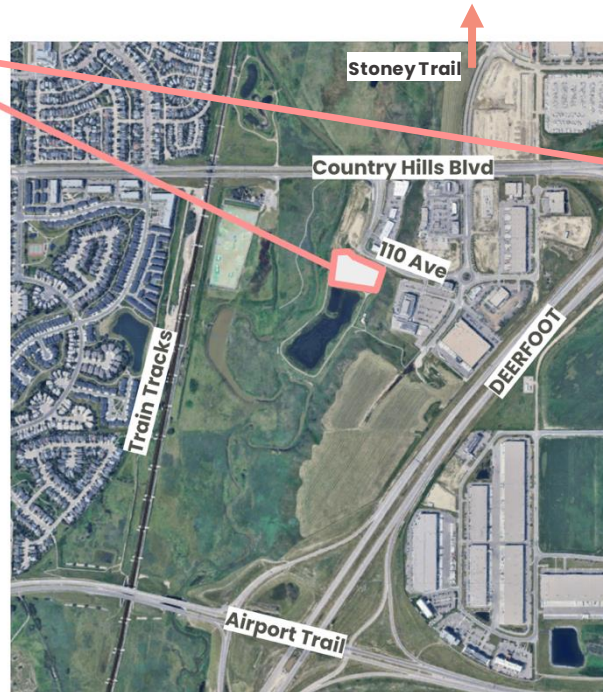
The site design will take into consideration neighbouring developments and City of Calgary Standards to propose a fit for purpose development.



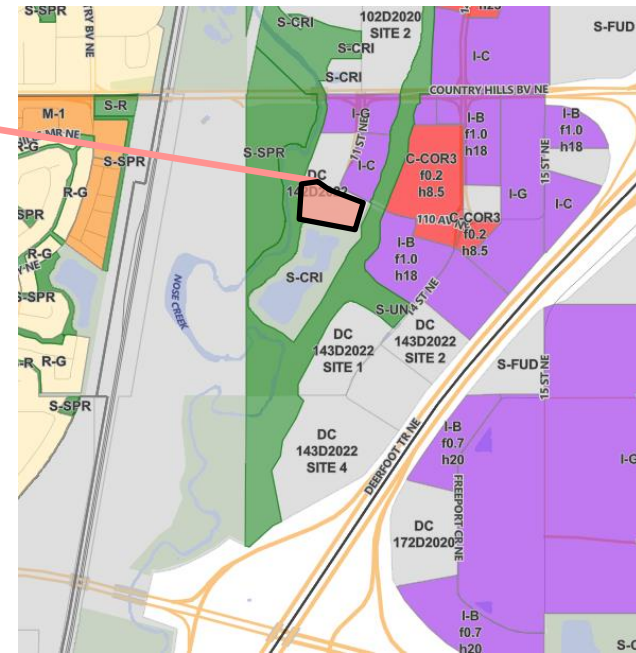
Site Location



▲ Calgary City Map

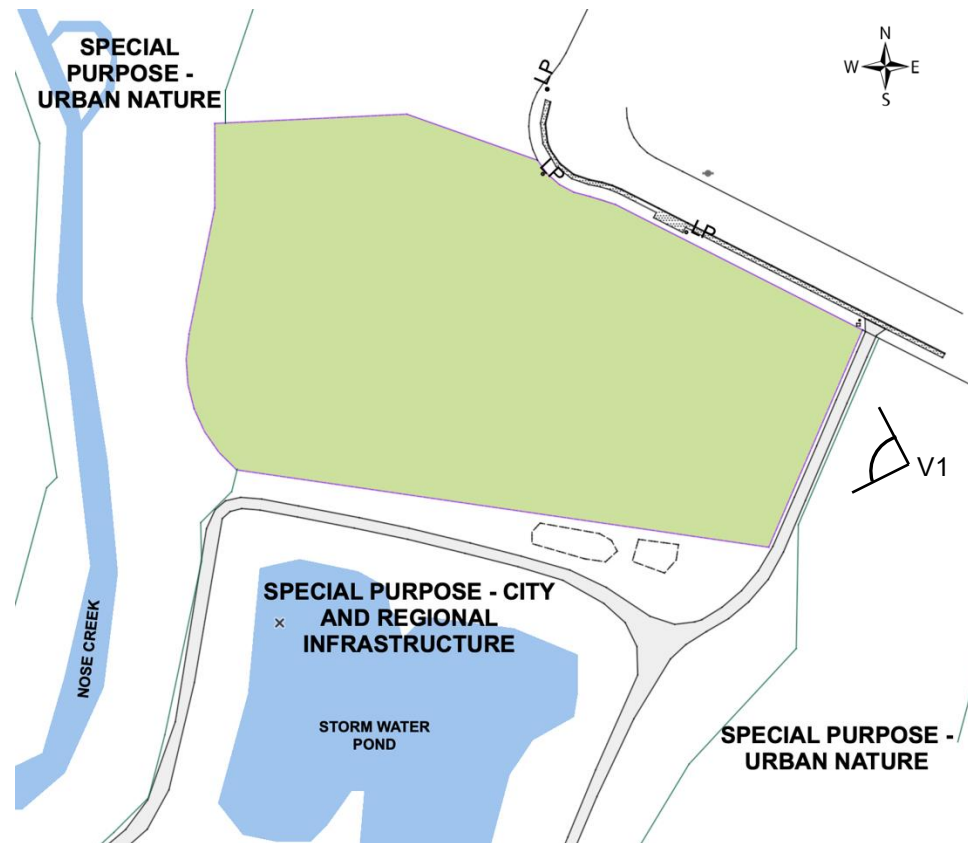


▲ Calgary Site Location: 1117 110 Ave NE



▲ Calgary Land Use Map

Site Location



Why this site?

The CASA Mental Health – Calgary site is surrounded on 3 sides by beautiful green spaces. This includes urban nature parks, Nose Creek, paved pedestrian and bike trails, a stormwater pond, and pavilion.



▲ V1. Photo of Site Looking West

Site Location



▲ Panorama of neighbouring Pavillion and Stormwater Pond



▲ Neighbouring Amenities



Closing Comments



Summary & Next Steps

This amendment will allow CASA to move forward with the development of a much-needed, purpose-built mental health facility that will serve vulnerable youth and contribute positively to the community and the broader health care system.

The development is publicly funded by the Government of Alberta and is anticipated to be operational by Fall 2027.

CASA Mental Health requests support of this amendment and welcomes any questions.





Questions?