

Calgary

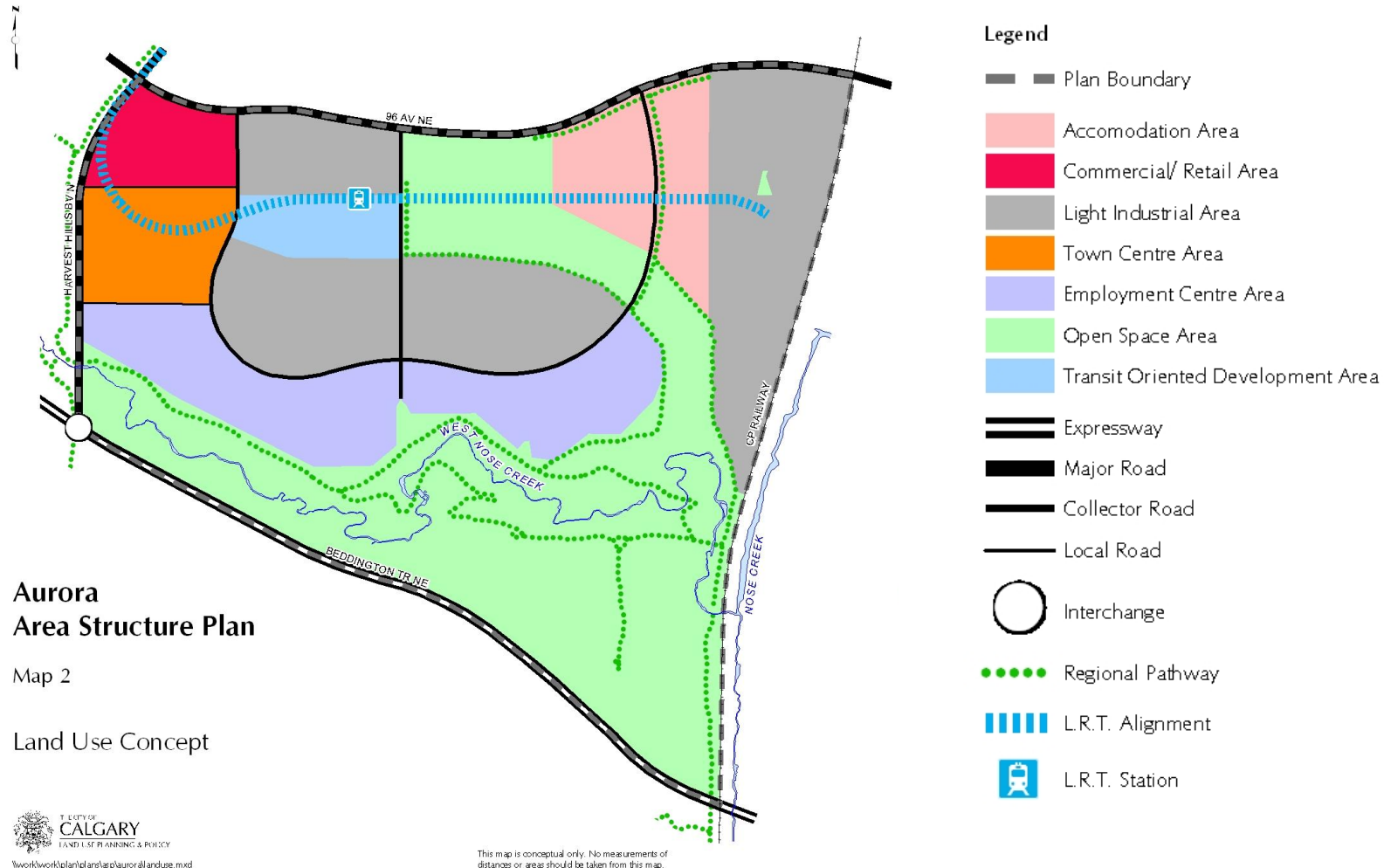


Naato'siyinnipi – Supplementary Slides

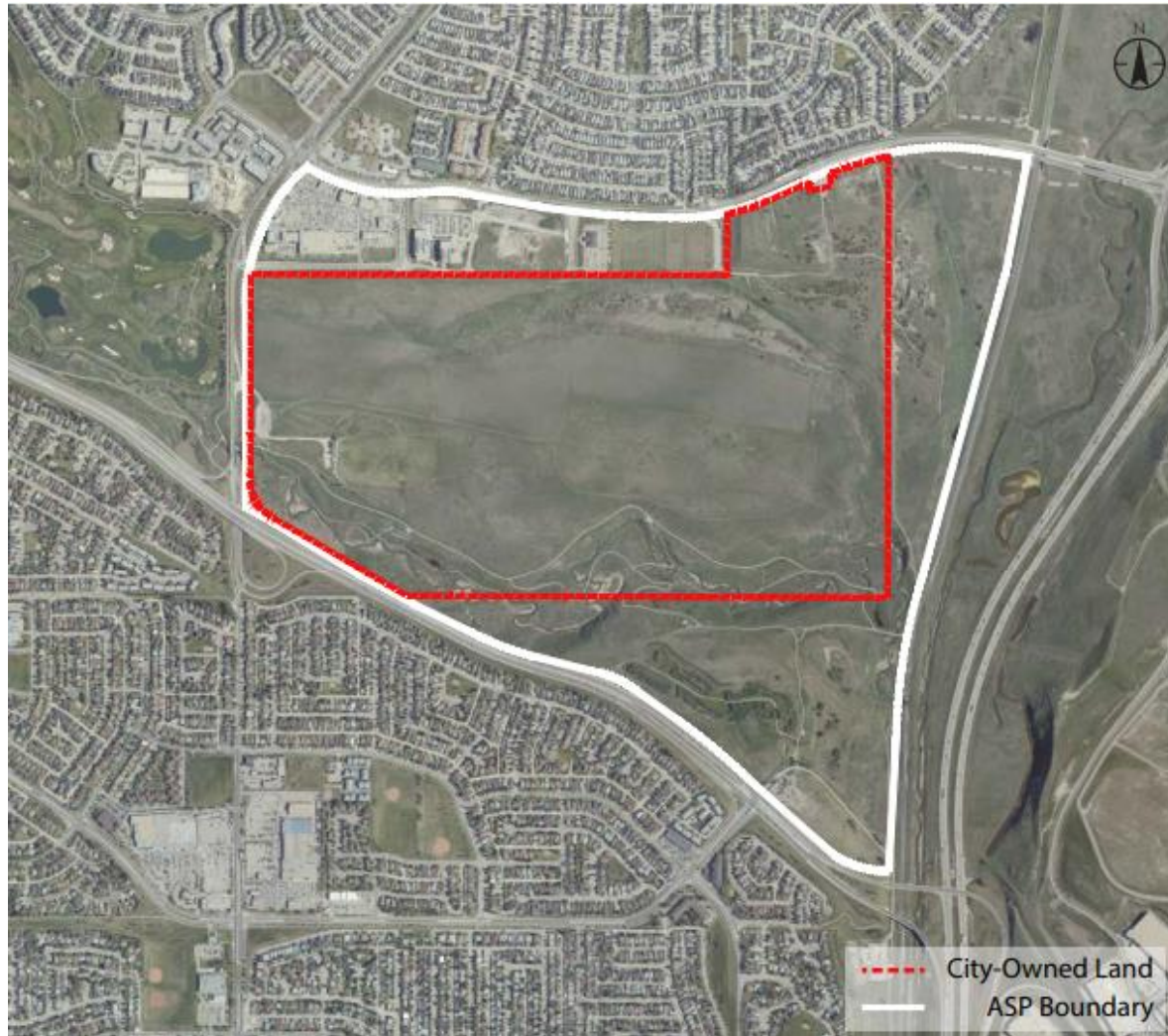
IP2025-0703
July 21, 2025



Aurora Business Park Land Use Concept Approved, 2008

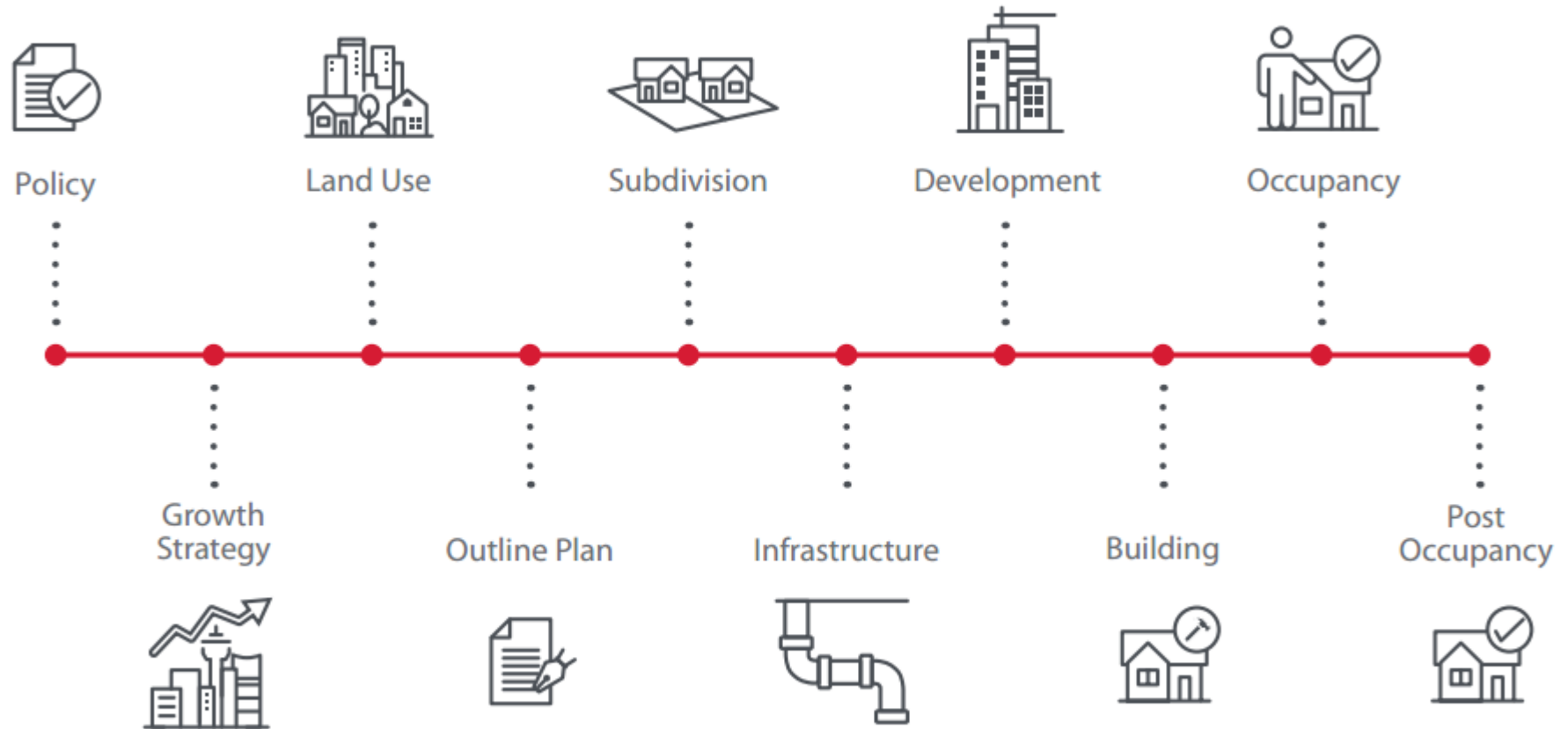


City Owned Lands





Approvals Continuum



Map 1: Plan Area Location





Map 2: Plan Area Features

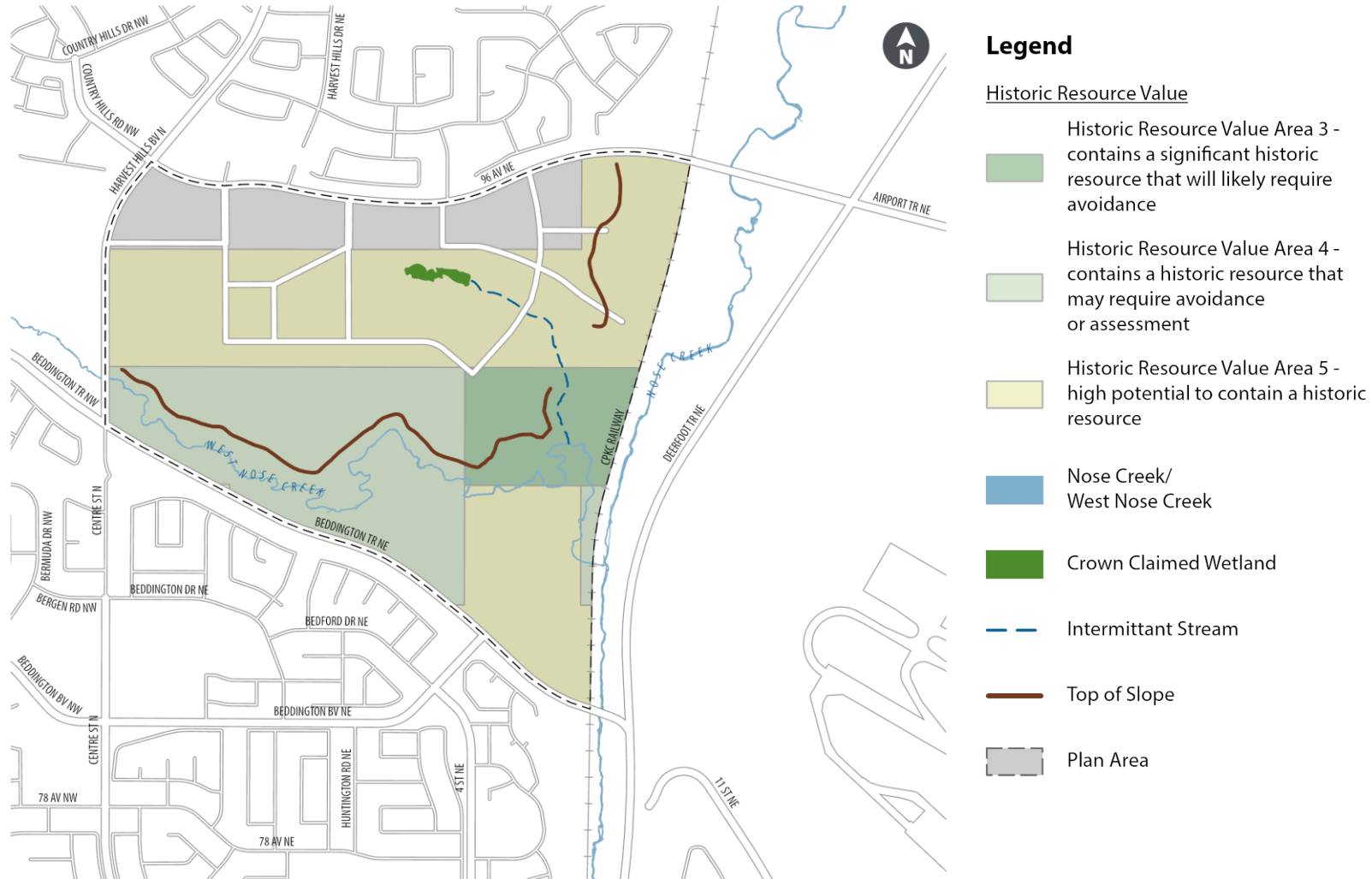


Legend

- Wetland
- Crown Claimed Wetland
- Watershed Area
- Nose Creek/
West Nose Creek
- Floodway
- Flood Fringe
- Meanderbelt Area
- Intermittant Stream
- Top of Slope
- ▲ Glacial Erratic
- ▲ Sandstone Cliff
- Pressure Station
- Oil/ Gas Pipeline
- Collector Road
- Plan Area



Map 3: Areas of Historical and Potential Historical Interest



Map 4: Aerial Image of Plan Area c. 1995





Map 5: Land Use Concept



Legend

- Mixed Use
- Multi-Unit Residential
- Ground-Oriented Residential
- Parks and Natural Areas
- Environmental Open Space Study Area
- Transit Station Planning Area (600m)
- Neighbourhood Corridor
- Future LRT Station - Greenline North
- Future LRT Station - Airport Connector Station
- Future Regional Rail Hub
- Maintenance and Storage Facility
- Dry Pond
- Neighbourhood Activity Centre
- Emergency Response Station
- High School Site (JUS)
- Plan Area Boundary

Map 6: Transit Station Planning Areas



Legend

- Transit Station Planning Area (600m)
- Future LRT Greenline
- Future Alignment - Airport Connector
- Regional Commuter Rail Corridor
- Future LRT Station - Greenline North
- Future LRT Station - Airport Connector
- Future Regional Rail Hub - Airport Connector and Passenger Rail Terminal
- Transit Storage and Maintenance Facility
- Neighbourhood Activity Centre
- High School Site
- Parks and Natural Areas
- Environmental Open Space Study Area
- Plan Area



Map 7: Parks System

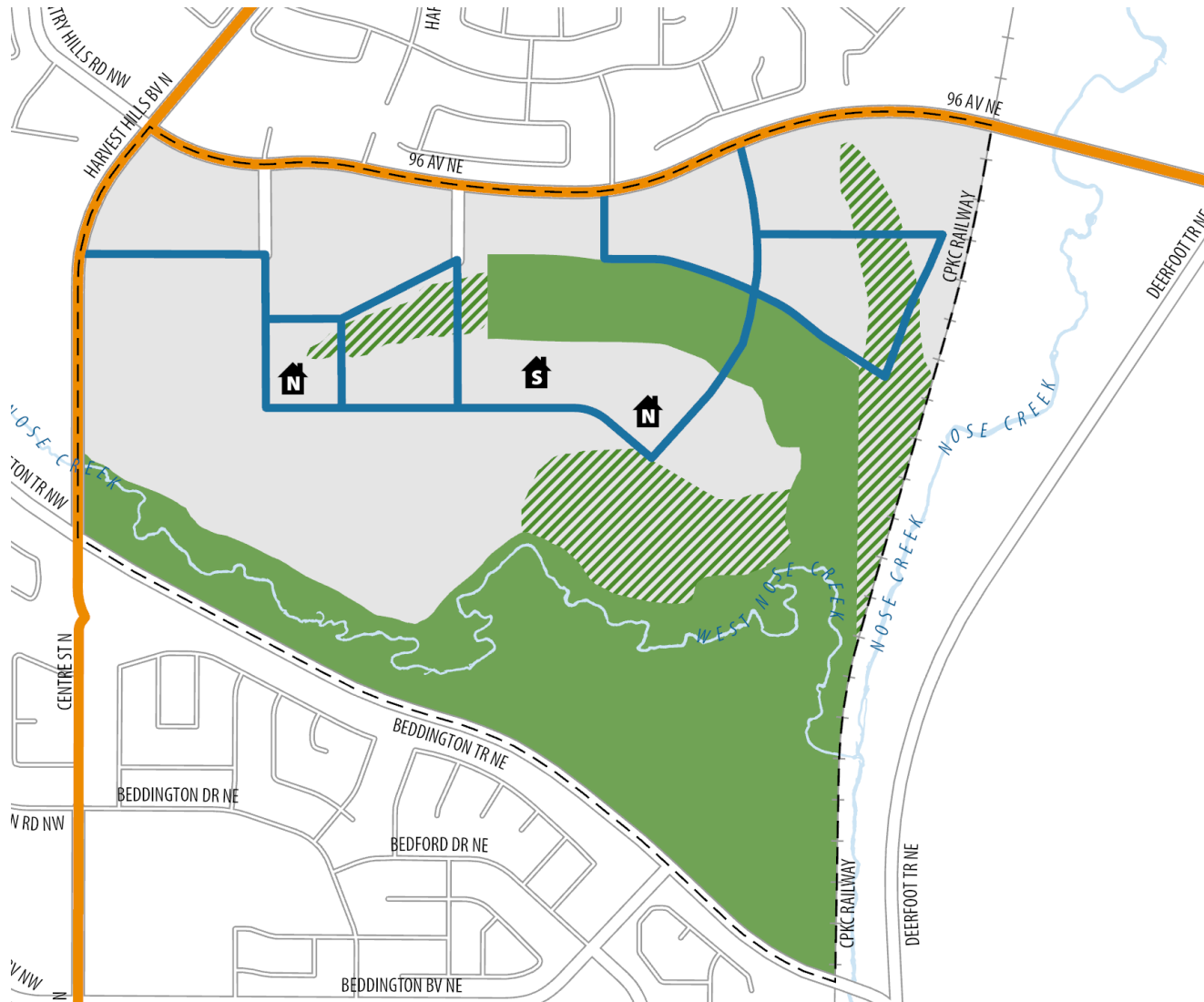


Legend








- Parks and Natural Areas
- Environmental Open Space Study Area
- Regional Pathway
- Trans Canada Trail
- Boardwalk/Trail
- S High School Site
- Plan Area



Map 8: Transit Network

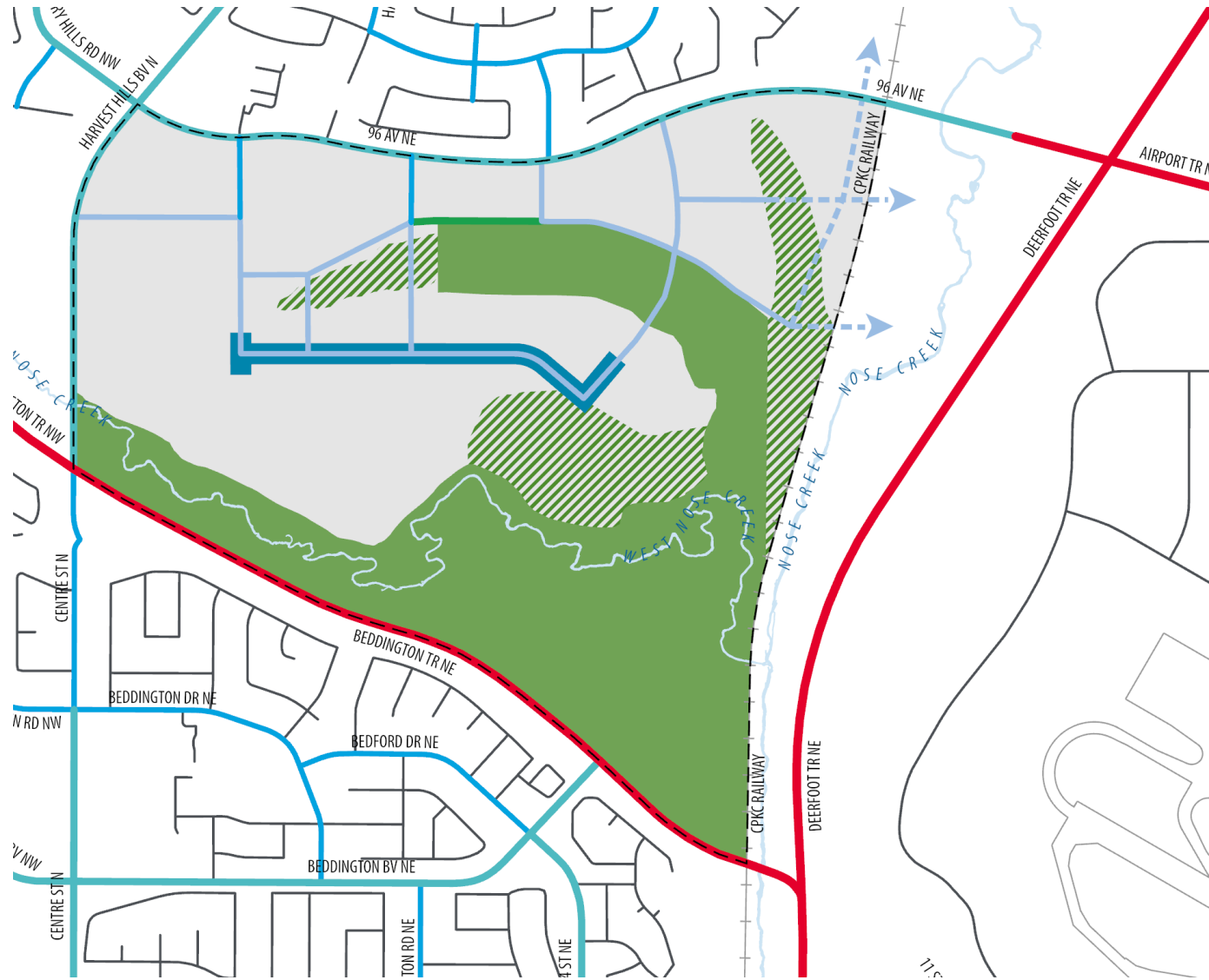


Legend

-  Primary Transit Service
-  Base Transit Service
-  Parks and Natural Areas
-  Environmental Open Space Study Area
-  Neighbourhood Activity Centre
-  High School Site
-  Plan Area



Map 9: Street Network

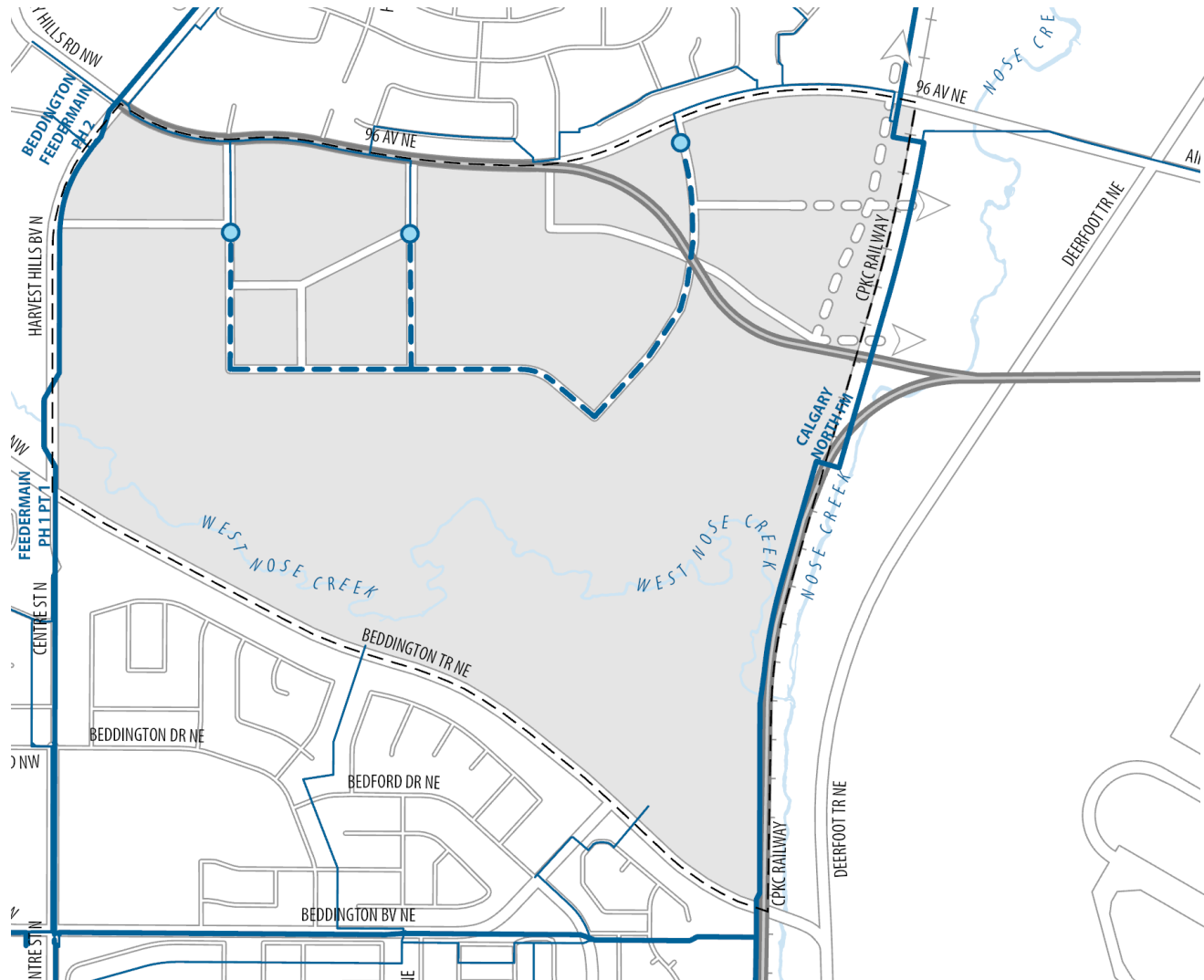


Legend







-  Skeletal Road
-  Arterial Street
-  Collector
-  Proposed Collector
-  Neighbourhood Corridor
-  Active Mode Connection
-  Parks and Natural Areas
-  Environmental Open Space Study Area
-  Plan Area



Map 10: Water Services

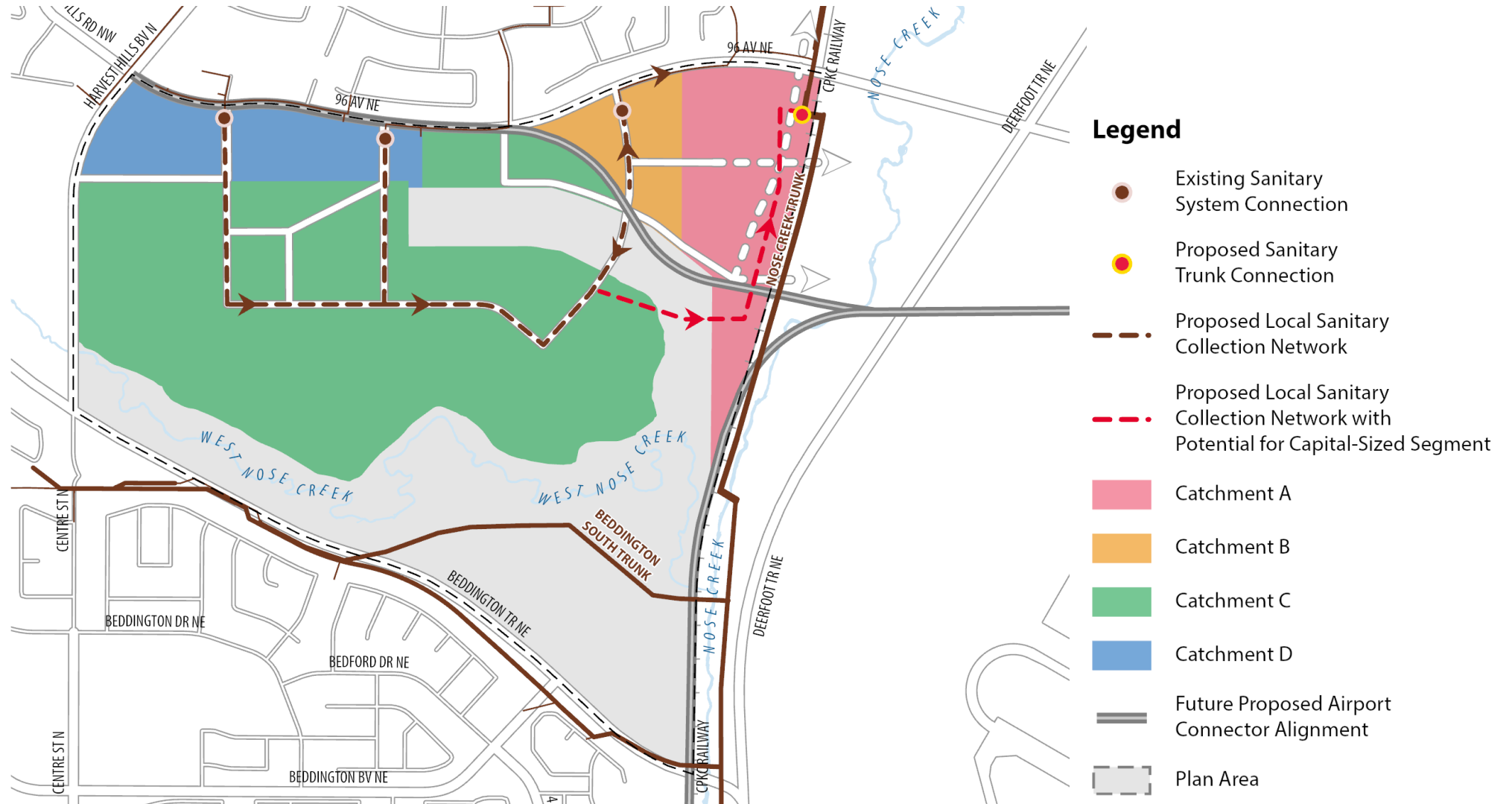


Legend

-  Proposed Water Connection Point
-  Proposed Distribution Main
-  Existing Feedermain
-  Existing Distribution Main
-  Future Proposed Airport Connector Alignment
-  Plan Area

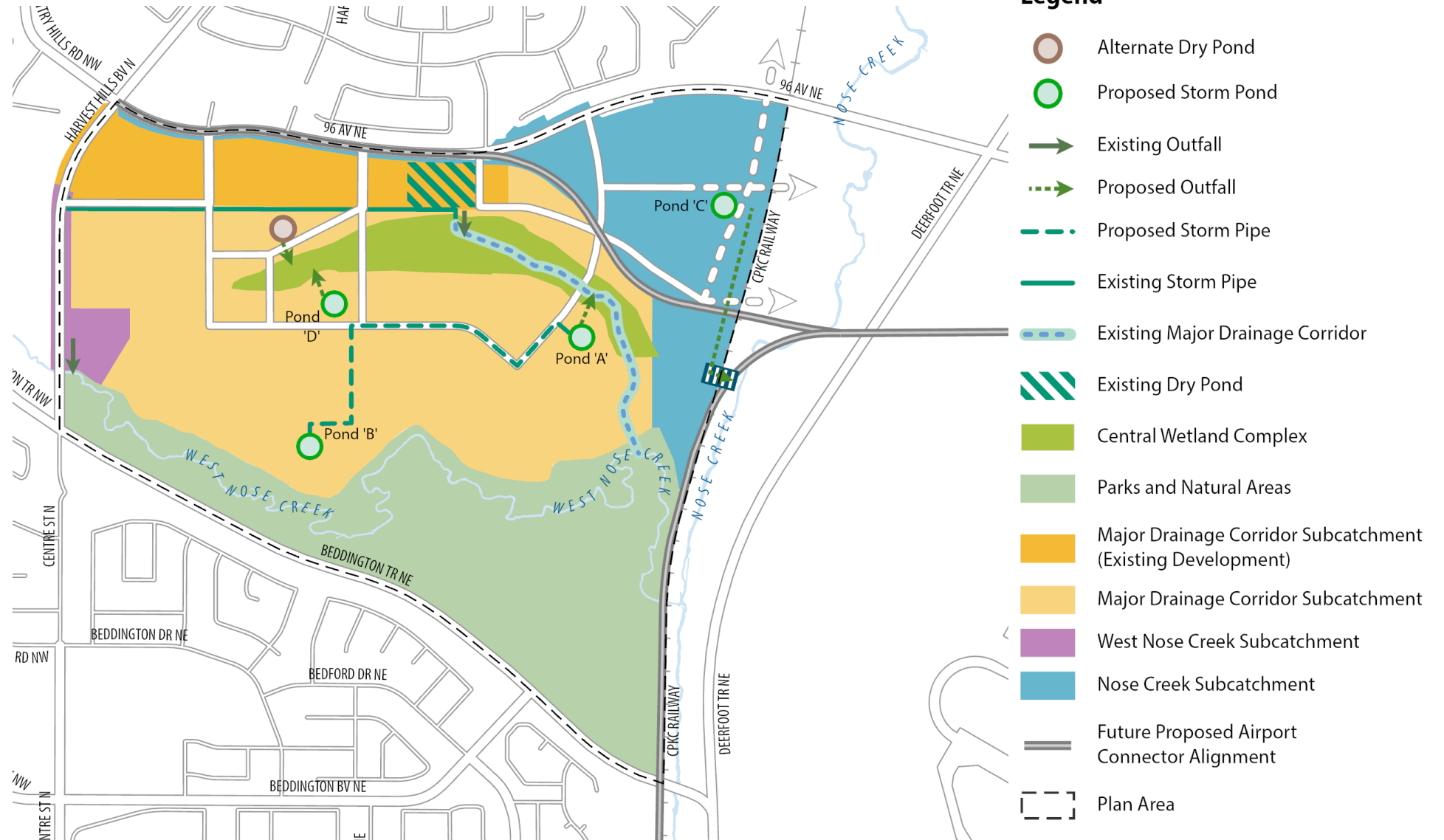


Map 11: Sanitary Services

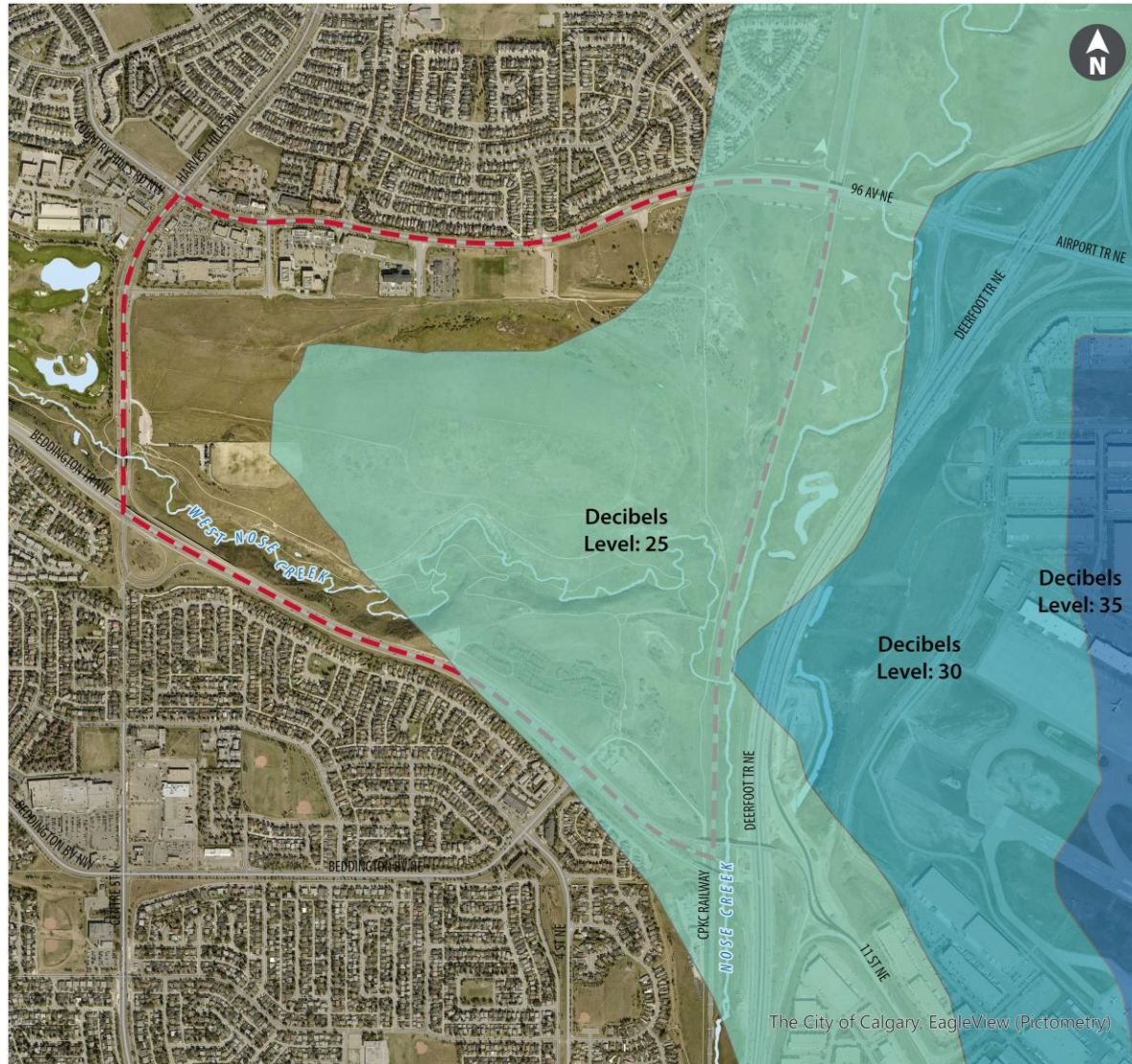




Map 12: Stormwater Servicing



Map 13: Noise Exposure Forecast



Legend

NEF DBLEVEL

 25

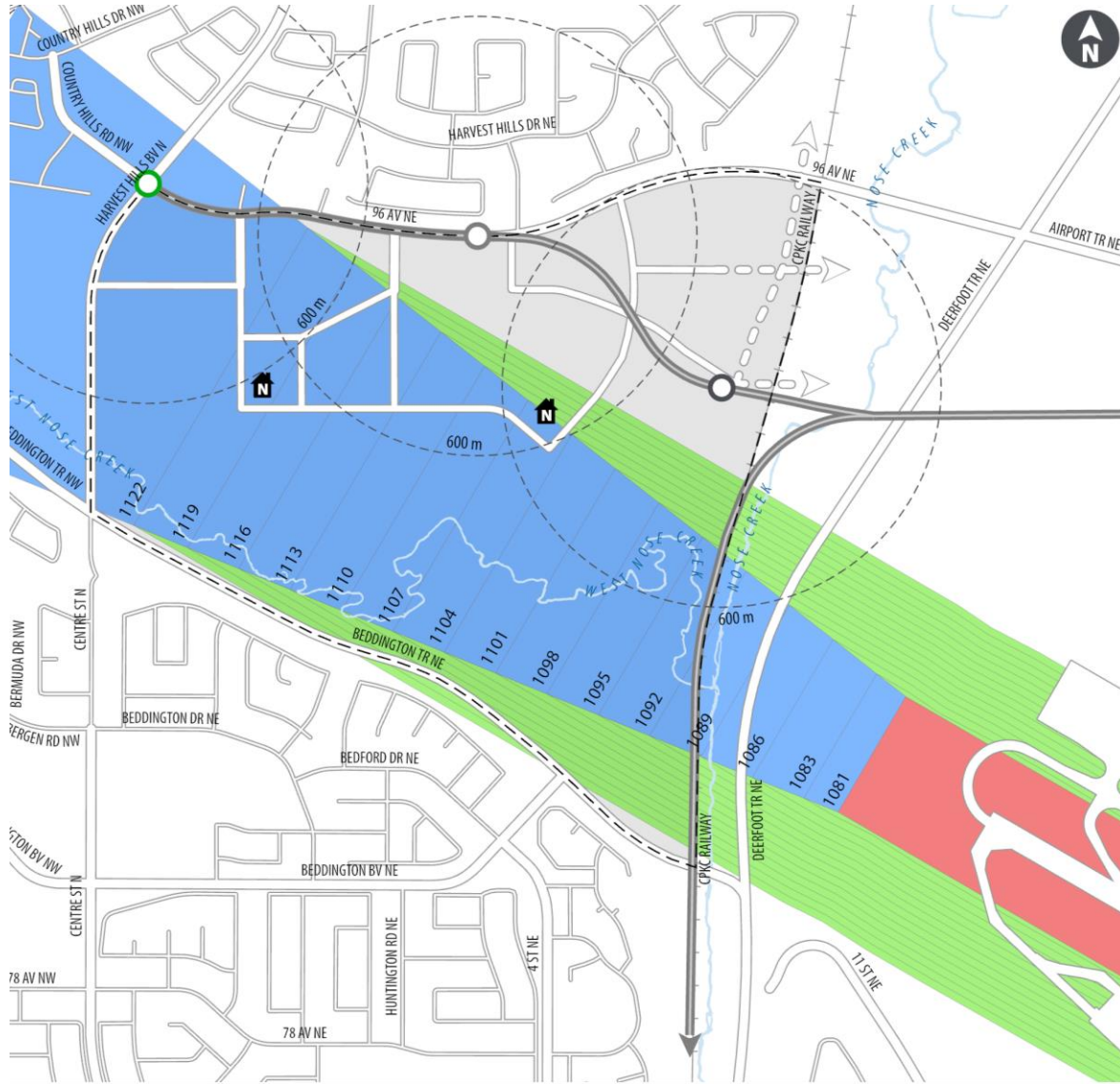
 30

 35

 Plan Area

The City of Calgary, EagleView (Pictometry)

Map 14: Airport Zoning Area



Legend

- YYC Runway Strip
- Approach Surface
- Transitional Surface
- Transit Station Planning Area (600m)
- Future LRT Station - Greenline North
- Future LRT Station - Airport Connector Station
- Future Regional Rail Hub
- Airport Connector Alignment
- Plan Area Boundary



Population, Dwellings and Jobs



234
Hectares



16,500
people



7,300
dwelling units



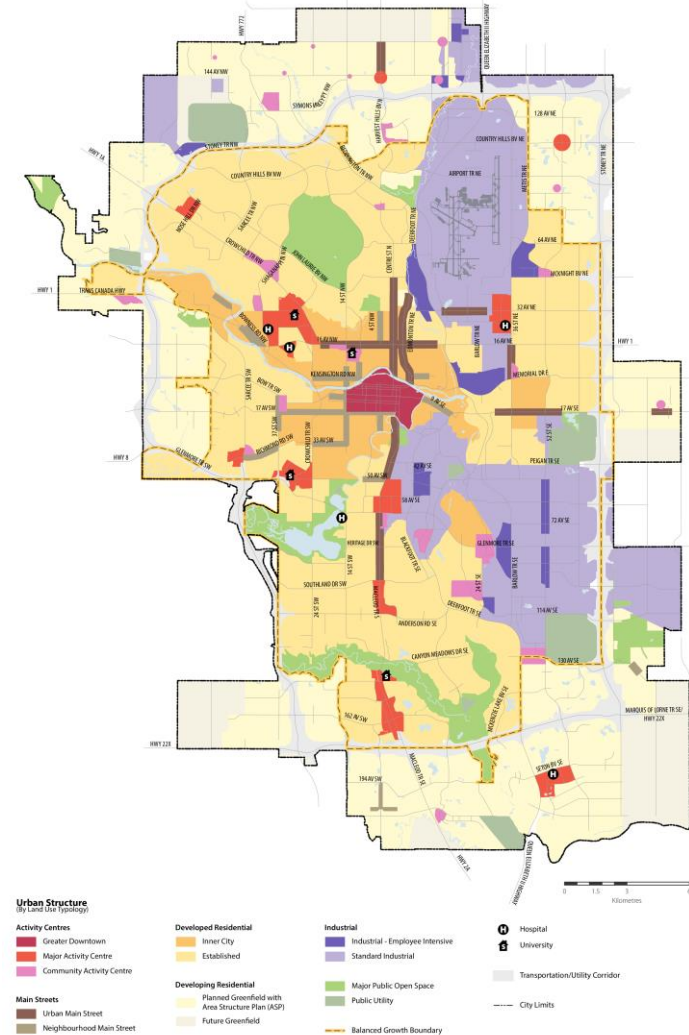
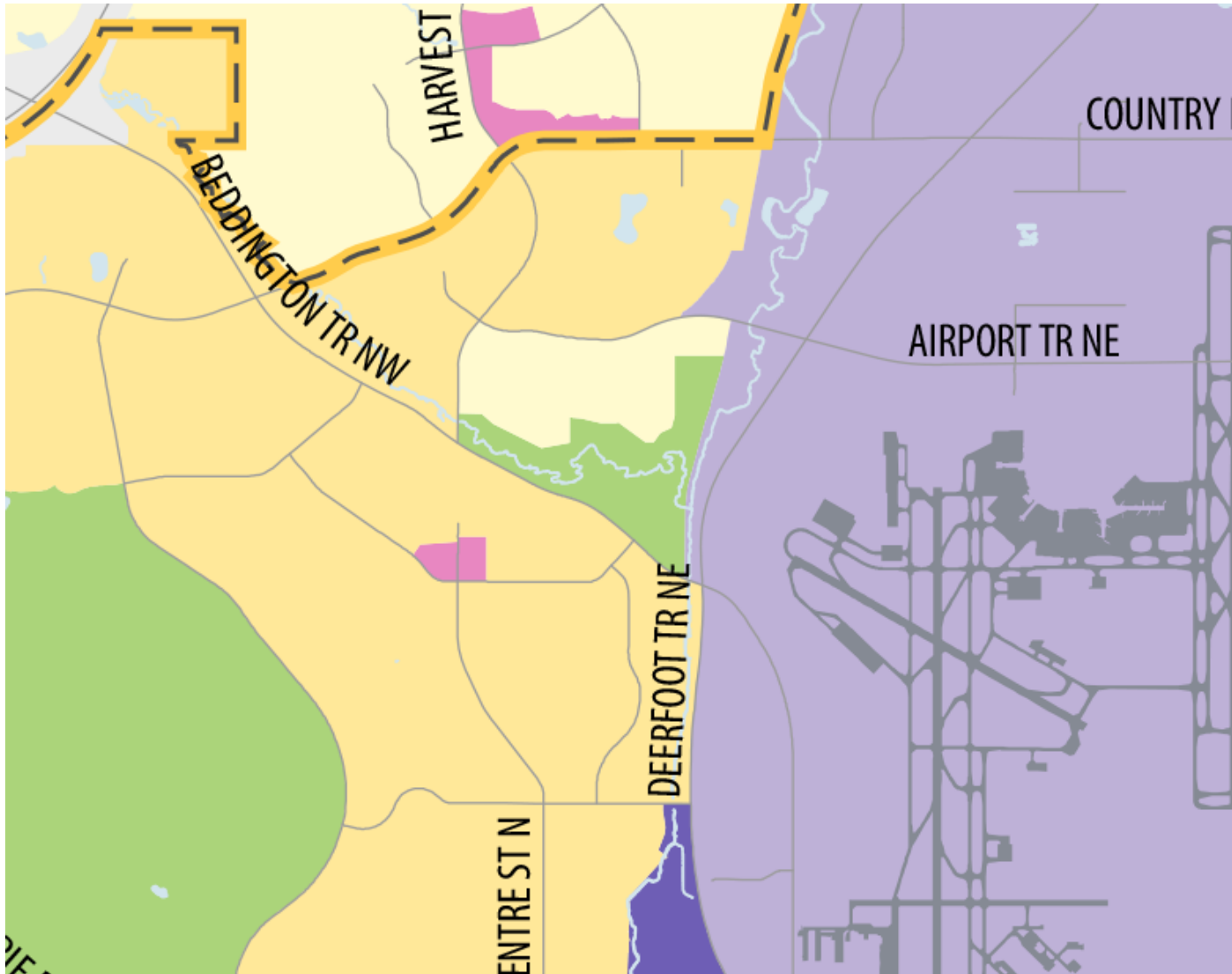
5,700
jobs



1
high school



Municipal Development Plan – Proposed



Plan Area Statistics

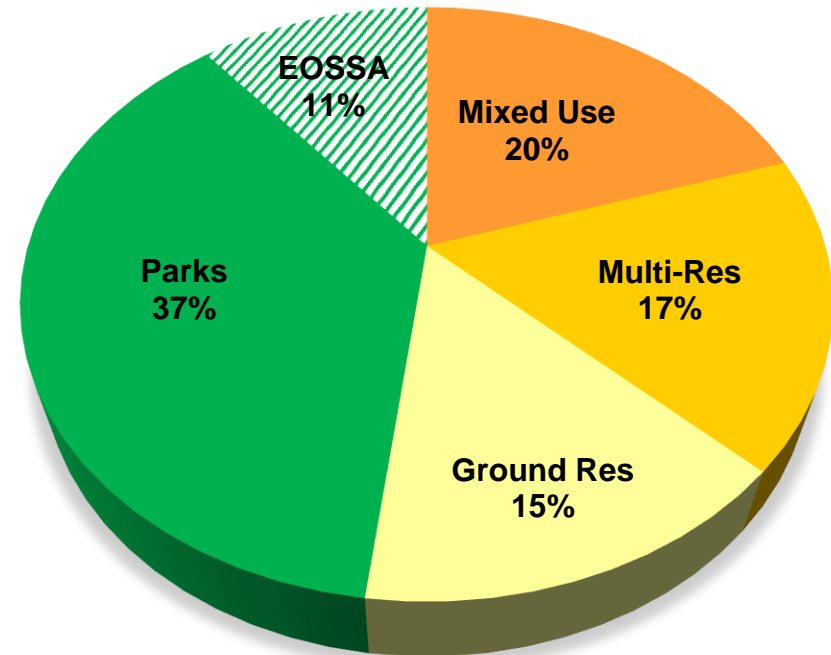
| Plan Area | 234 hectares (578 acres) |
|----------------------------------|-----------------------------|
| Projected Population | 16,500 |
| High School | 7.58 hectares (18.75 acres) |
| Dwelling Units | 7,300 |
| Jobs | 5,700 |
| Units per hectare | 25-90 |
| Mixed Use Areas | 56 hectares (138 acres) |
| Multi-Unit Residential | 43 hectares (106 acres) |
| Ground Oriented Residential | 46 hectares (113 acres) |
| Parks and Natural Areas | 89 hectares (219 acres) |
| Municipal Reserve | 14 hectares (24 acres) |
| Maintenance and Storage Facility | 11 hectares (27.18 acres) |
| Fire Station | 0.6 hectares (1.5 acres) |
| EOSSA | 26.6 hectares (65.7 acres) |



Land Use

| | | |
|-----------------------------|-------------------------|----|
| Mixed Use | 46 hectares (113 acres) | 20 |
| Multi-Unit Residential | 39 (96 acres) | 17 |
| Ground Oriented Residential | 34 (84 acres) | 14 |
| Parks and Natural Areas | 89 (219 acres) | 37 |
| EOSSA | 26 (64 acres) | 11 |

Naato'siyinnipi Plan Area Land Use Mix



■ Mixed Use
 ■ Multi-Res
 ■ Ground Res
 ■ Parks
 ▨ EOSSA

Nose Creek Regional Park Overlap Areas



Legend

- Transit Station Planning Area (600m)
- Future LRT Greenline
- Future Alignment - Airport Connector
- Regional Commuter Rail Corridor
- Future LRT Station - Greenline North
- Future LRT Station - Airport Connector Station
- Future Regional Rail Hub - Airport Connector and Passenger Rail Terminal
- Transit Storage and Maintenance Facility
- Neighbourhood Activity Centre
- High School Site
- Parks and Natural Areas
- Environmental Open Space Study Area
- Plan Area

Area Plans

