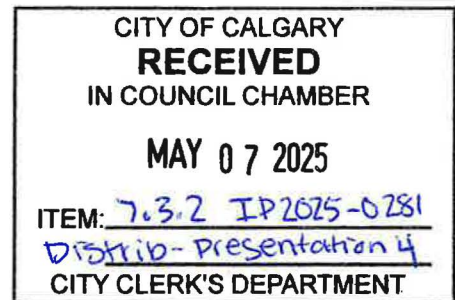


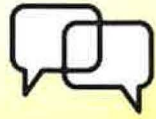


West Elbow Communities Local Area Planning:

Altadore, Bankview, Cliff Bungalow, Elbow Park, Erlton, Garrison Woods, Lower Mount Royal, Mission, North Glenmore Park, Richmond, Rideau Park, Roxboro, Scarboro, South Calgary, Sunalta, Upper Mount Royal

Your community's
past, present and future.
Let's chat.





**WE NEED
YOUR INPUT**

Help Shape Your Community's Future

Communities naturally change and evolve over time. Working together, we will create a plan to guide growth, change, redevelopment and community improvements in your community and the surrounding local area.



Your Voice Matters

IAP2 Spectrum of Public Participation

IAP2's Spectrum of Public Participation was designed to assist with the selection of the level of participation that defines the public's role in any public participation process. The Spectrum is used internationally, and it is found in public participation plans around the world.

INCREASING IMPACT ON THE DECISION

INFORM

CONSULT

INVOLVE

COLLABORATE

EMPOWER

PUBLIC PARTICIPATION GOAL

To provide the public with balanced and objective information to assist them in understanding the problem, opportunities and solutions.

To obtain public feedback on analysis, alternatives and/or decisions.

To work directly with the public throughout the process to ensure that public concerns and aspirations are consistently understood and considered.

To partner with the public in each aspect of the decision-making process to ensure that the public's needs and preferences are fully considered.

To place final decision making in the hands of the public.

PROMISE TO THE PUBLIC

We will keep you informed.

We will keep you informed, listen to and acknowledge concerns and aspirations and provide feedback on how public input influenced the decision.

We will work with you to ensure that your concerns and aspirations are directly reflected in the alternatives developed and provide feedback on how public input influenced the decision.

We will look to you for advice and innovation in formulating solutions and incorporate your advice and recommendations into the decisions to the maximum extent possible.

We will implement the decision.

What was delivered

What was promised



Community that is 40–60+ years old

Homes and buildings have aged and the population has dropped or flatlined. Schools and businesses often struggle to stay open.



Overflow Designation for Kindergarten to Grade 9 Regular Program Students Attending Elboya School

This letter is to provide an update that Elboya School is over capacity this school year and is projected to remain over capacity for the 2024-25 school year. In June 2023, a short-term overflow was implemented for new students registering for the regular program at Elboya School. We are continuing to explore solutions to address the high enrolment at Elboya School for the remainder of the school year and the 2024-25 school year. We will keep the overflow to Chinook Park and Woodman Schools in place for new,



Notice Regarding Overflow Designation for Kindergarten to Grade 9 Students Attending Rideau Park School

Rideau Park School is projected to be over capacity and will not be able to accommodate all students who live within the designated school boundary. Consequently, we will introduce a cap on enrolment at Rideau Park School and designate overflow schools for students in elementary and junior high grades.

Effective immediately, **new** registrations that cannot be accommodated at Rideau Park School will be overflowed to Chinook Park School or Woodman School, depending on the student's grade. Please review the [full notice](#) for detailed information.



Moving or Thinking of Moving?

As you all know, we are very, very close to capacity at Altadore School. This means that we do not accept any students who are living outside of our catchment area. If your child is currently attending Altadore and you move outside of our boundaries, your child will be able to stay until the end of June. As much as we wish they could, they will not be able to continue on at Altadore next year. It is also important to know that if you do not inform us of a move over the summer, your child could be required to change schools mid-year. If you have any questions, please let us know.



Overflow Designation for New Grade 10 to Grade 12 Regular Program Students Attending Western Canada High School

Western Canada High School is over capacity this school year and is projected to remain over capacity for the 2024-25 school year and beyond. In July 2023, [we implemented a short-term overflow](#) for new students registering for the regular program at Western Canada High School. We are continuing to explore solutions to address the high enrolment at Western Canada High School.

At this time, due to ongoing growth, the school will not be able to accommodate all new students who live within the designated school boundary. For the remainder of the school year and beyond, we will be maintaining a cap on enrolment at Western Canada High School. We will keep the overflow to Crescent Heights High School in place for new,



Notice Regarding School Overflow Designation for Mount Royal School

The purpose of this letter is to provide you with information on capacity issues at Mount Royal School, and inform you of the accommodation plans. Mount Royal School is over capacity and is no longer able to accommodate all students who live in the boundary for the 2022-23 school year and beyond. For this reason, the Calgary Board of Education (CBE) will be capping enrolment at Mount Royal School and designating overflow schools.

Notice Regarding Overflow Designation for Kindergarten to Grade 9 Students Attending Rideau Park School

The Calgary Board of Education (CBE) will introduce a cap on enrolment at Rideau Park School and designate overflow schools for students in elementary and junior high grades.

Overflow Designation for Mount Royal School

Mount Royal School is over capacity and is no longer able to accommodate all students who live within the specified boundaries. For this reason, the Calgary Board of Education (CBE) will be capping enrolment at Mount Royal School and designating overflow schools.

[Learn More](#)

Elboya School Designated to Windsor Park School 2026

On Feb. 19, the Calgary Board of Education announced that younger students at Elboya School (Kindergarten to Grade 3) will be designated to Windsor Park School for the 2026 school year. Current Grade 4 to 9 students will remain at Elboya School next year. As of the 2026-2027 school year, students will also be designated to Windsor Park. French programs are not changing.

[Learn More](#)

Update on Lottery and Overflow Designation for Western Canada High School

This update serves to inform that a lottery will not be required for incoming Grade 10 students. The overflow provision, however, will remain in place for Western Canada High School.

[Learn More](#)

Update to Overflow School Designation for Connaught School Kindergarten to Grade 6 Students

This letter is to inform you that Ramsay School and Earl Grey School have reached their capacity and will be unable to accommodate additional students overflowed from Connaught School. Wildwood School will now serve as a third overflow school to accommodate ongoing enrolment growth in the Connaught School boundary for the remainder of the 2023-24 school year and beyond.

Effective immediately, all new kindergarten to Grade 6 students who cannot be accommodated at Connaught, Ramsay, or Earl Grey Schools will be overflowed to:

- **Wildwood School** - located at 120 45 Street SW Calgary, AB

Please see [the notice](#) from Sept. 14, 2023. The overflow will continue at Wildwood School until it is no longer necessary.



Our dog parks are showing signs of overuse.

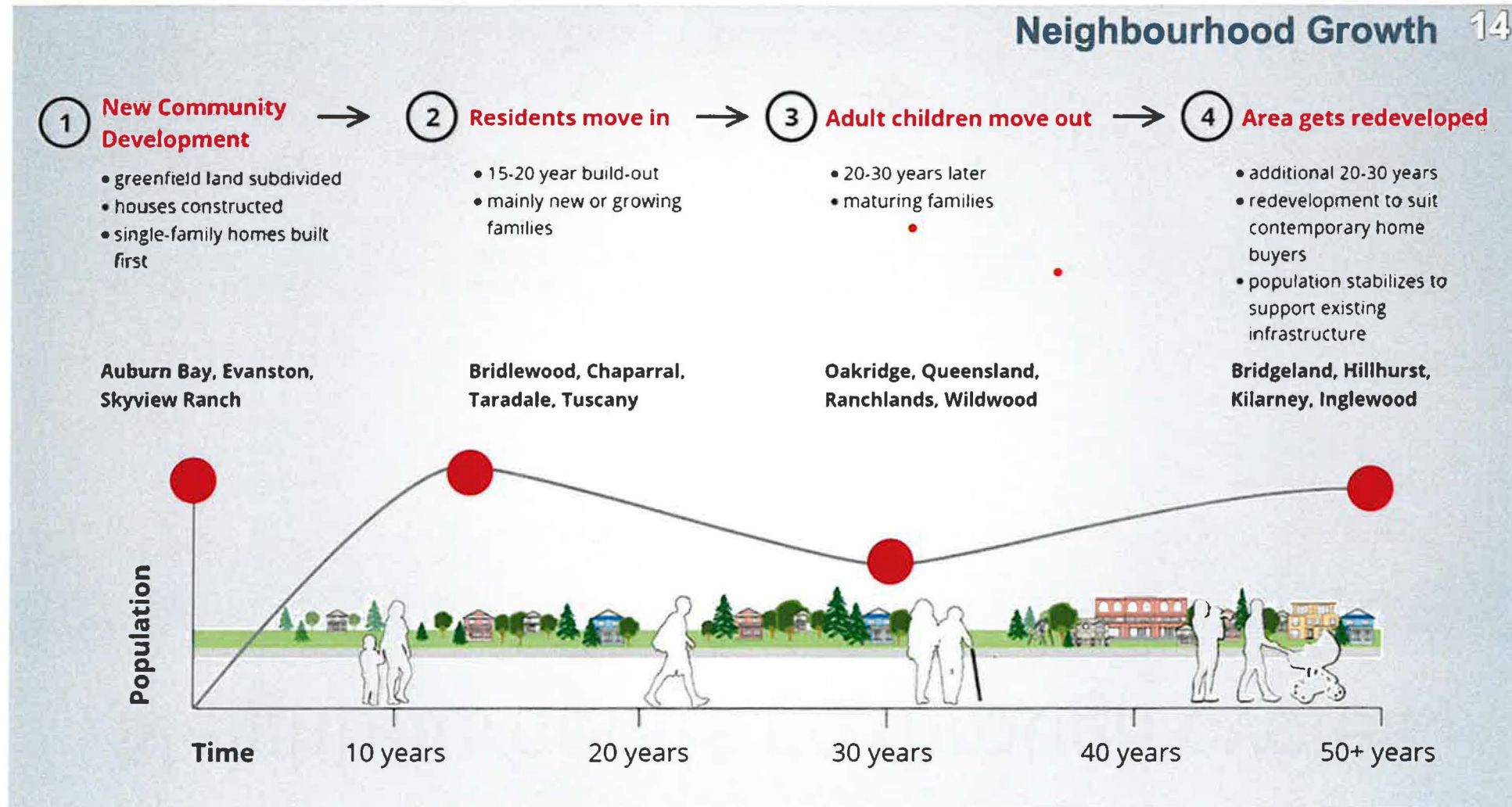


Mud pit anyone?

This is an important part of the infrastructure conversation that did not take place.



What assumptions are being used?



Neighbourhoods go through cycles.



Generic, out-of-scale buildings that fail to respect community context are jarring & cause friction.

