

Connect: Calgary's Parks Plan

IP2025-0132
2025 May 14

Open Space Plan

(CPS2002-42)

Approved July 22, 2002

Sub-Neighbourhood Parks Open Space Policy

(CPS2003-10)

Approved March 3, 2003



1. That the Infrastructure and Planning Committee recommends that Council:
 - a) Approve Connect: Calgary's Parks Plan;
 - b) Rescind the Council approved Open Space Plan, Open Space Plan Policy (CSPS013), and the Natural Areas Management Plan; and
 - c) Direct Administration to make amendments to the Municipal Development Plan Volumes 1 and 2 to align with terminology and enable implementation of Connect: Calgary's Parks Plan.



Why Do We Need Connect?

Calgary's parks and open spaces are cherished places that connect us to nature, our heritage and one another.

- Protect and enhance our natural areas
- Prepare our parks for future growth
- Create better spaces for all Calgarians
- Improve maintenance



Summary of the Three Public Engagement Phases

The project's online
engagement portal received:



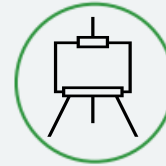
over
32,400
views



19,625
visitors



1,680
contributions



53

In-person and
virtual events and
pop-ups



19

Targeted
workshops



Consultation with
9
advisory
committees



457
paper
questionnaires
completed



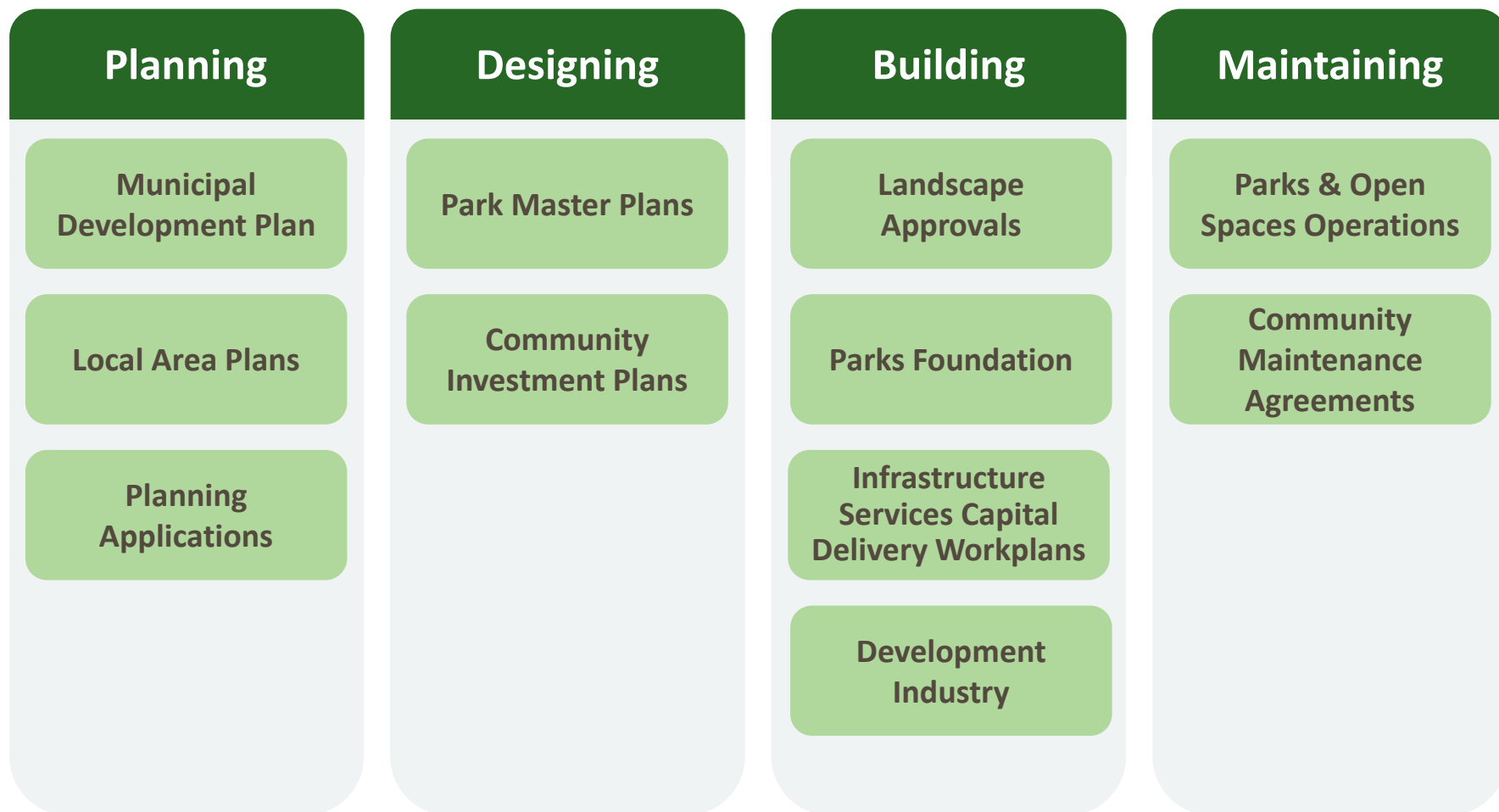
Partnerships
with community
organizations



Over
2,300
promotional
postcards were
distributed

Where Does Connect Fit?

Connect: Calgary's Parks Plan



What Will Connect Change?

Protect Nature and Elevate Park Quality

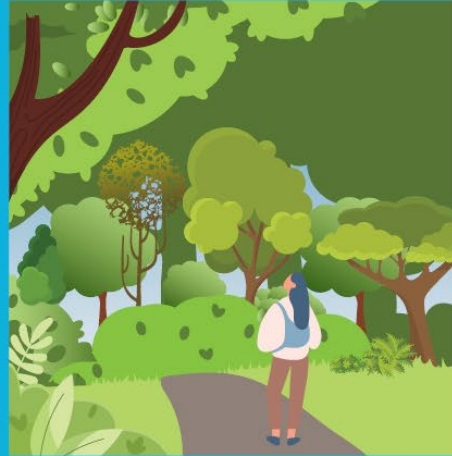


What Will Connect Change?

Build a Better Park System for Calgarians



Address Gaps in Established Communities



Environment Function

- Natural areas
- Naturalized areas
- Naturalized asset
- Waterbodies
- Tree stands
- Constructed wetlands



Recreation Function

- Picnic and BBQ spaces
- Gathering spaces
- Cultural spaces
- Exercise equipment
- Spray parks
- Playgrounds
- Plazas
- Leisure skating (loops)
- Toboggan hills
- Off leash dog areas



Sport Function

- Soccer pitch
- Cricket fields
- Baseball diamonds
- Tennis courts
- Basketball courts
- Pump tracks
- Skate parks
- Disc golf courses
- Ice rinks



1. That the Infrastructure and Planning Committee recommends that Council:
 - a) Approve Connect: Calgary's Parks Plan;
 - b) Rescind the Council approved Open Space Plan, Open Space Plan Policy (CSPS013), and the Natural Areas Management Plan; and
 - c) Direct Administration to make amendments to the Municipal Development Plan Volumes 1 and 2 to align with terminology and enable implementation of Connect: Calgary's Parks Plan.



Supplementary Slides



Support Communities



Cultural Landscapes



Safety and Security



Economic Resilience



Innovation



Conservation and
Environment Protection



Physical and Mental Health
and Wellbeing



Inclusive and Accessible



Connectivity for People
and Wildlife



Climate Resilience

Phase 1 In-Person Engagement

Event/Location	Date (2023)	Ward
Open Houses		
Varsity Community Association	Mon. April 24	1
Gensis Centre	Wed. April 26	5
Cardel Rec South	Wed. May 3	13
Southview Community Centre	Wed. May 10	9
Pop ups – Park Locations		
Prairie Winds Park	Sun. April 23	5
Big Marlborough Park	Sun. April 23	10
Prince’s Island Park	Sat. May 6	7
Riley Park	Sat. May 7	7
Stanley Park	Sat. May 7	8
Bowness Park	Sun. May 14	1
Pop ups – Other Locations		
Village Square Leisure Centre	Mon. May 1	10
Seton Library	Tues. May 2	12
Judith Umbach Library	Tues. May 2	4
Crowfoot Library	Mon. May 8	2
Fish Creek Library	Tues. May 16	11
Central Library	Wed. May 17	7

Event/Location	Date (2023)	Ward
Connect Event Series		
Connect to Nature: A barrier-free interpretive walk at Weaselhead Flats	Sat. April 22	11
Connect with Indigenous History: An interpretive walk at Nose Hill Park	Sat. April 29	4
Connect to Engineering, Art and Insects: Family fun at Ralph Klein Park	Sun. April 30	12
Connect with the Future: Parks planning party for young adults, City Hall	Thur. May 4	7
Connect through Play: Accessible Playground Playdate for Families at South Glenmore Park	Fri. May 5	11
Connect with Birds: Migratory Bird Day at Inglewood Bird Sanctuary	Sat. May 13	9
Connect: The Mayors Environment Expo	Tues. June 6 – Wed. June 7	7



Phase 2 In-Person Engagement

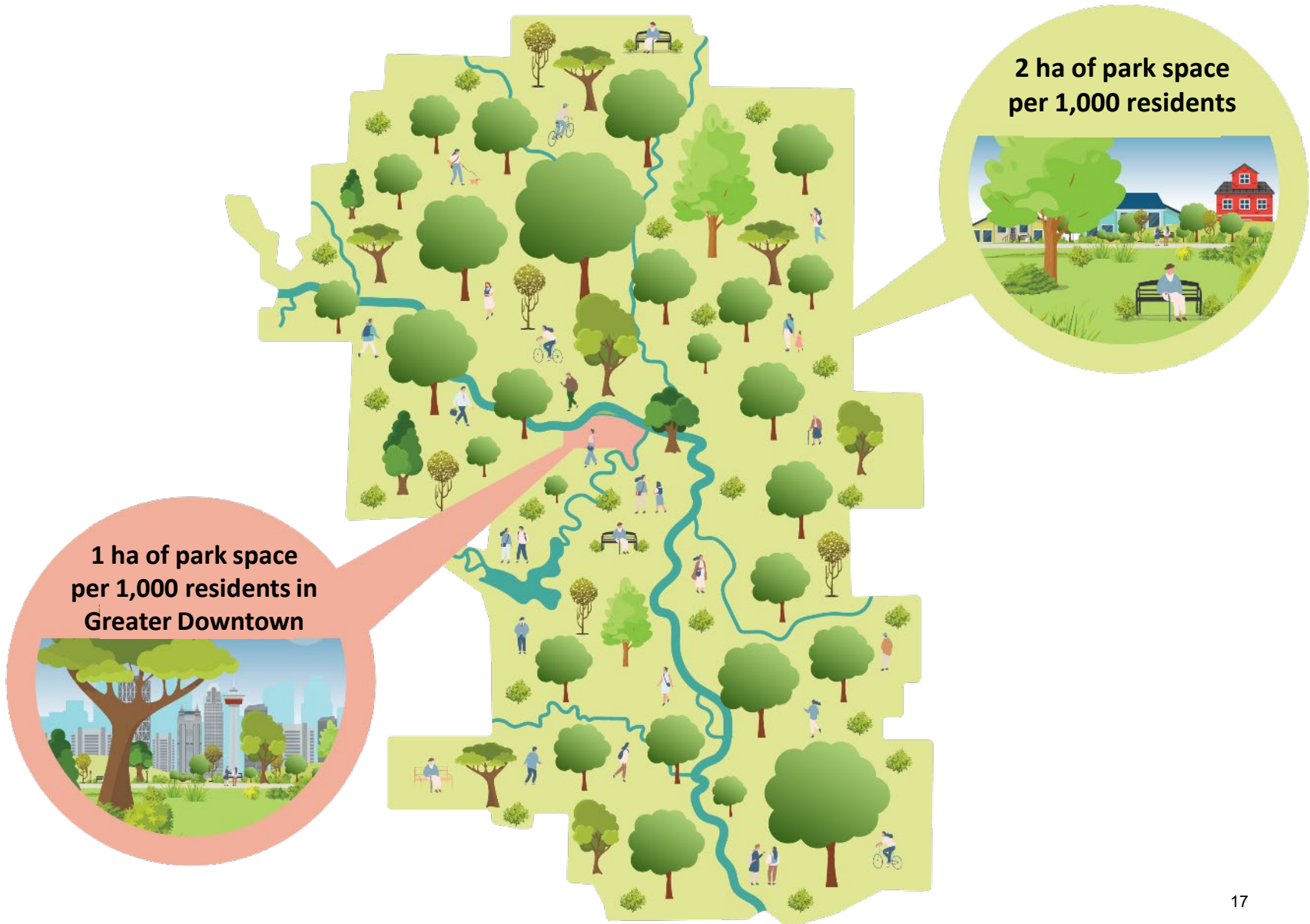
Event/Location	Date (2023)	Ward
Open Houses		
Rocky Ridge YMCA	Thur. Oct 19	1
VIVO for Healthier Generations	Sat. Oct 21	3
Southland Leisure Centre	Thur. Oct 26	11
Cardel Rec South	Sat. Oct 28	13
Greater Forest Lawn 55+ Society	Tue. Oct 31	9
Devonian Gardens	Wed. Nov 1	7
Genesis Centre	Thur. Nov 2	5
Westbrook Mall	Sat. Nov 4	8
Seton YMCA	Thur. Nov 9	12
Youth Events		
University of Calgary- School of Architecture, Planning and Landscape program (6-week course)	Sept 13 – Oct 11	7
Mount Royal University – Ecotourism and Outdoor Leadership and Recreation and Sport Management	Oct 30 – Nov 2	8
Open Minds City Hall School - Bishop Carol High School	Thur. Oct 12	8
West Island College High School	Fri. Oct 20	11

Event/Location	Date (2023)	Ward
Park Walks		
Sue Higgins Park	Sun. Oct 15	14
Carburn Park	Sun. Oct 15	11
Quarry Park	Sun. Oct 15	11
Griffith Woods Park	Sun. Oct 22	6
North Glenmore Park	Sun. Oct 22	11
Big Marlborough Park	Sun. Oct 29	10
Elliston Park	Sun. Oct 29	9
Prairie Winds Park	Sun. Oct 29	5
Downtown River Walk	Sun. Oct 29	7
Nose Hill Park	Sun. Nov 5	4
Bowness Park	Sun. Nov 5	1
Bowmont Park	Sun. Nov 5	1

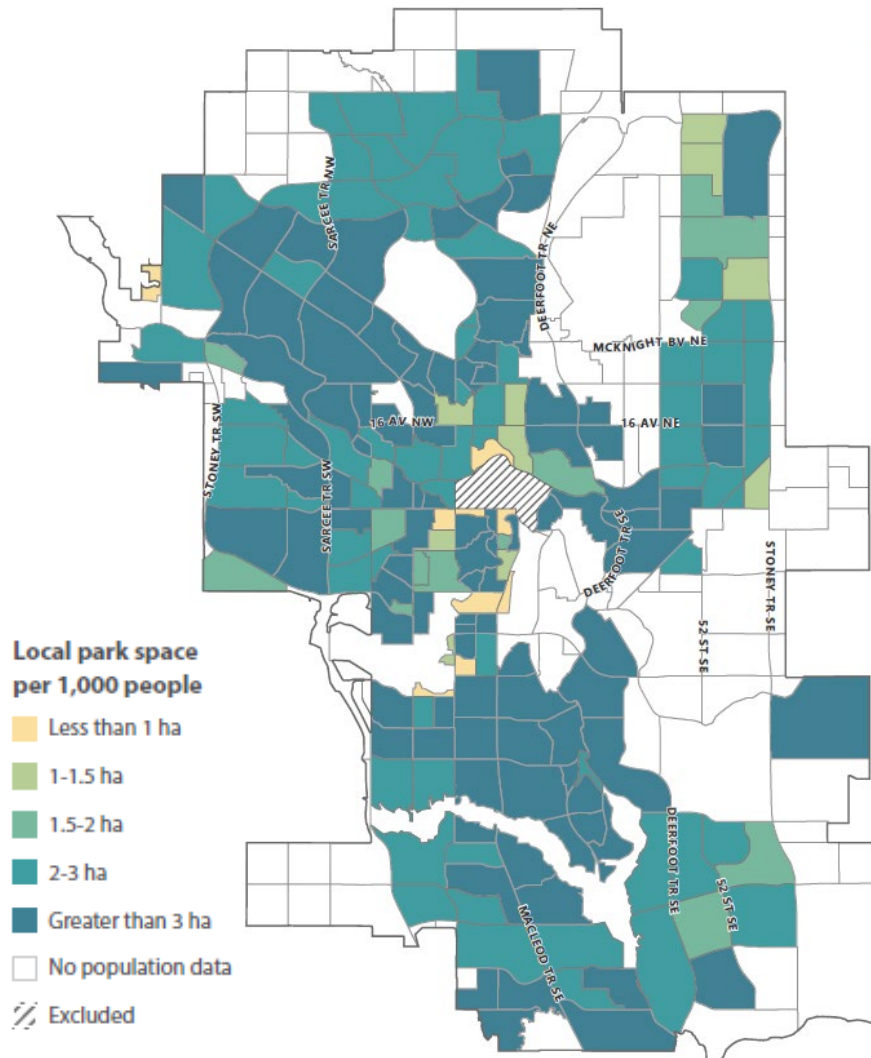
Park Provision Benchmarking

City	Population (2021)	Provision Target	Ha Parkland / 1,000 People
Kelowna BC	144,576	2.2 ha (active parks) per 1,000; 400-500 m	13.5 ha
Halifax NS	439,819	0.33 ha per 1,000; 10 min walk	11.1 ha
Quebec City QC	549,459	400 – 800 m	7.7 ha
Calgary AB	1,306,780	2.0 ha per 1,000 (local park space)	6.8 ha (all parks) 3.1 ha (local park space)
Brampton ON	656,480	1.6 ha per 1,000	6.6 ha
Edmonton AB	1,010,899	500 m; 10 min walk	6.3 ha
Regina SK	226,404	0.7 – 1.6 ha per 1,000	5.9 ha
Surrey BC	568,322	4.2 ha per 1,000	5.1 ha
Winnipeg MB	749,407	50 m2 per person	4.6 ha
Ottawa ON	1,017,449	2 ha per 1,000; 400 – 800 m	4.5 ha
Saskatoon SK	266,141	400 m	4.1 ha
Mississauga ON	717,961	12% of gross land area; 1.2 ha per 1,000	3.9 ha
Montreal QC	1,762,949	NA	3.7 ha
Toronto ON	2,794,356	NA	2.9 ha
Vancouver BC	662,248	1.1 ha per 1,000	1.8 ha

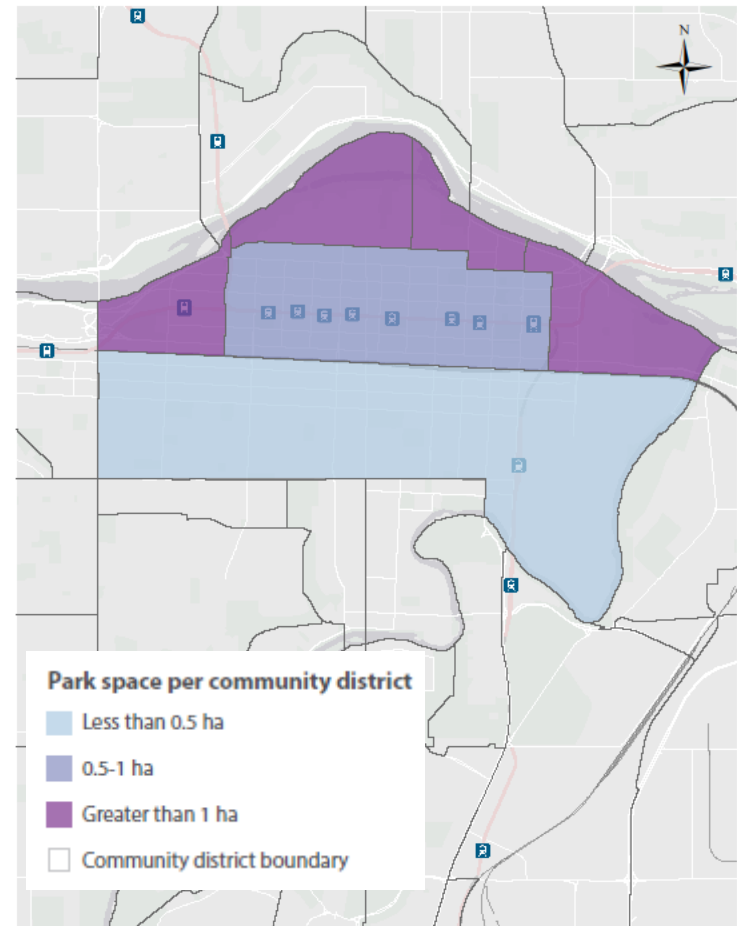
Local Park Provision Targets



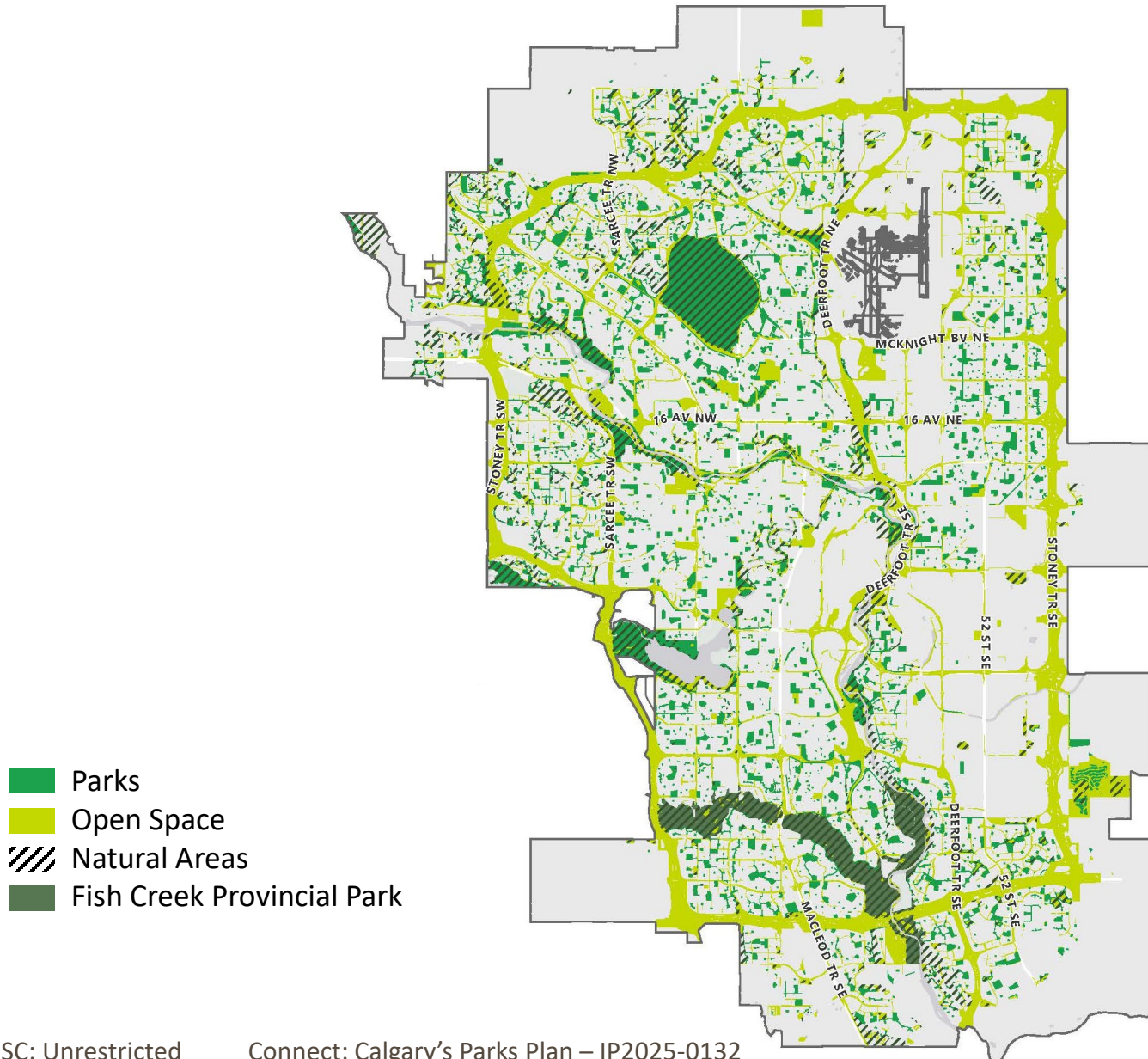
City-Wide (2 ha/1,000 people)



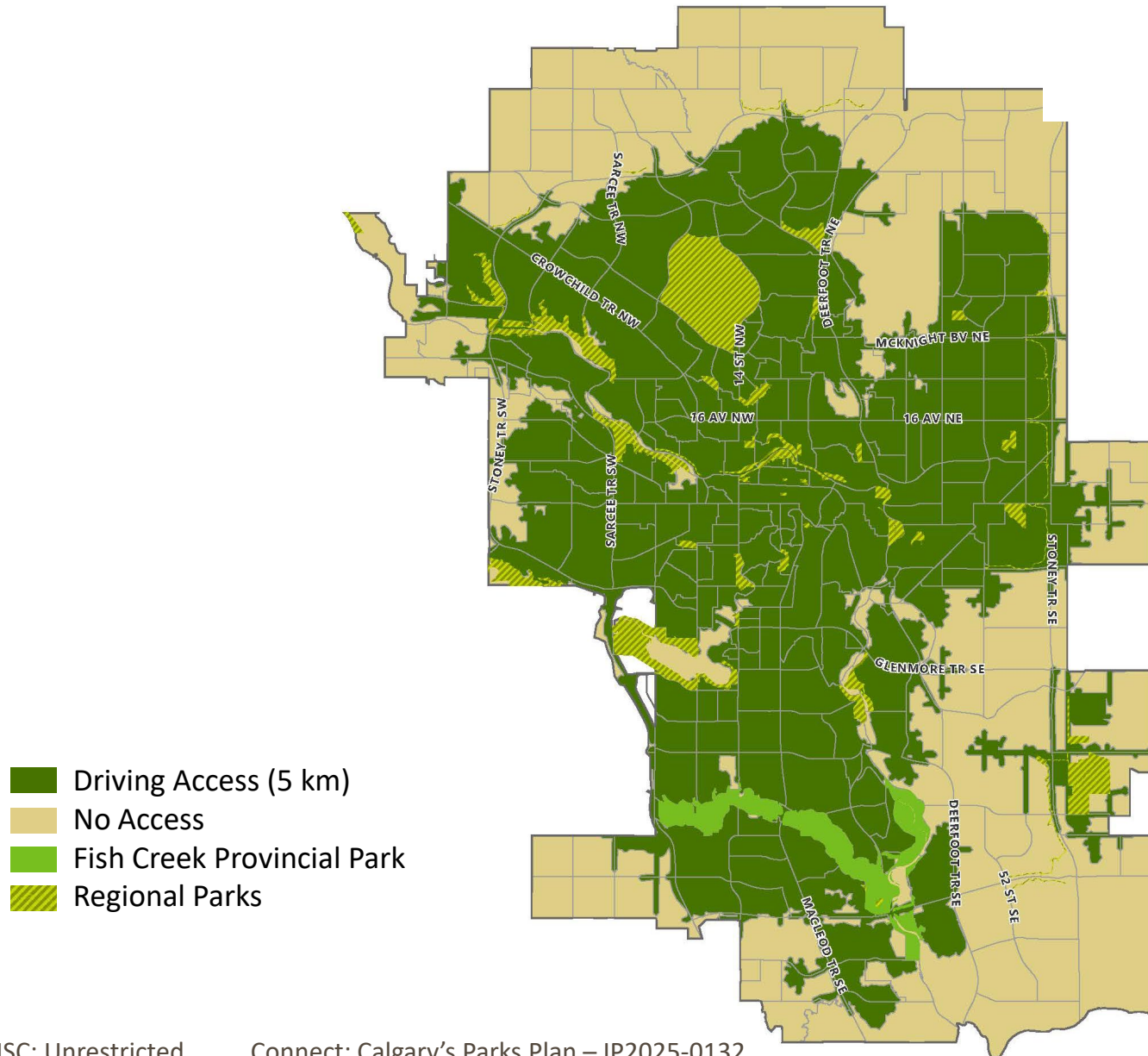
Greater Downtown (1 ha/1,000 people)



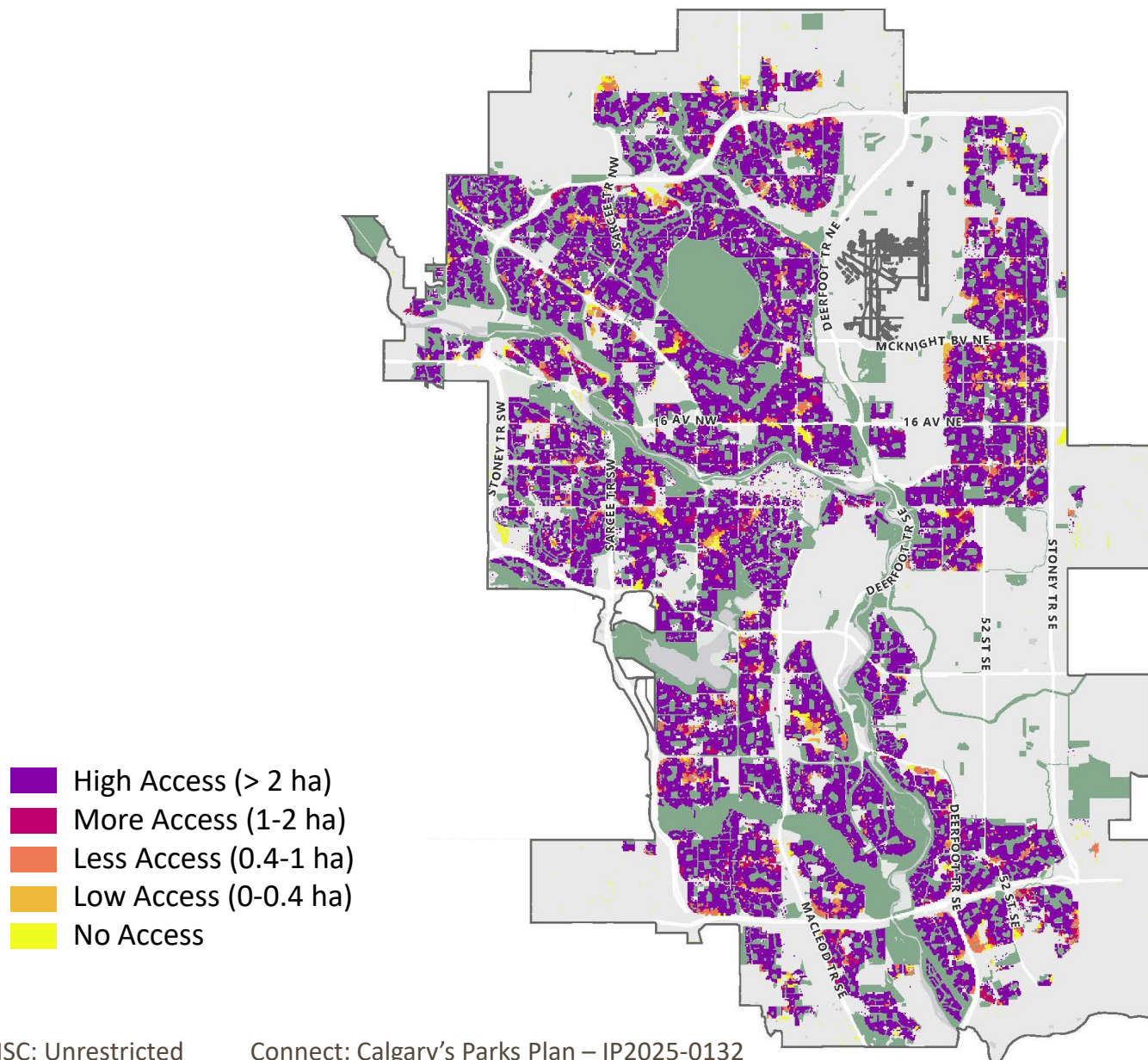
The Park System



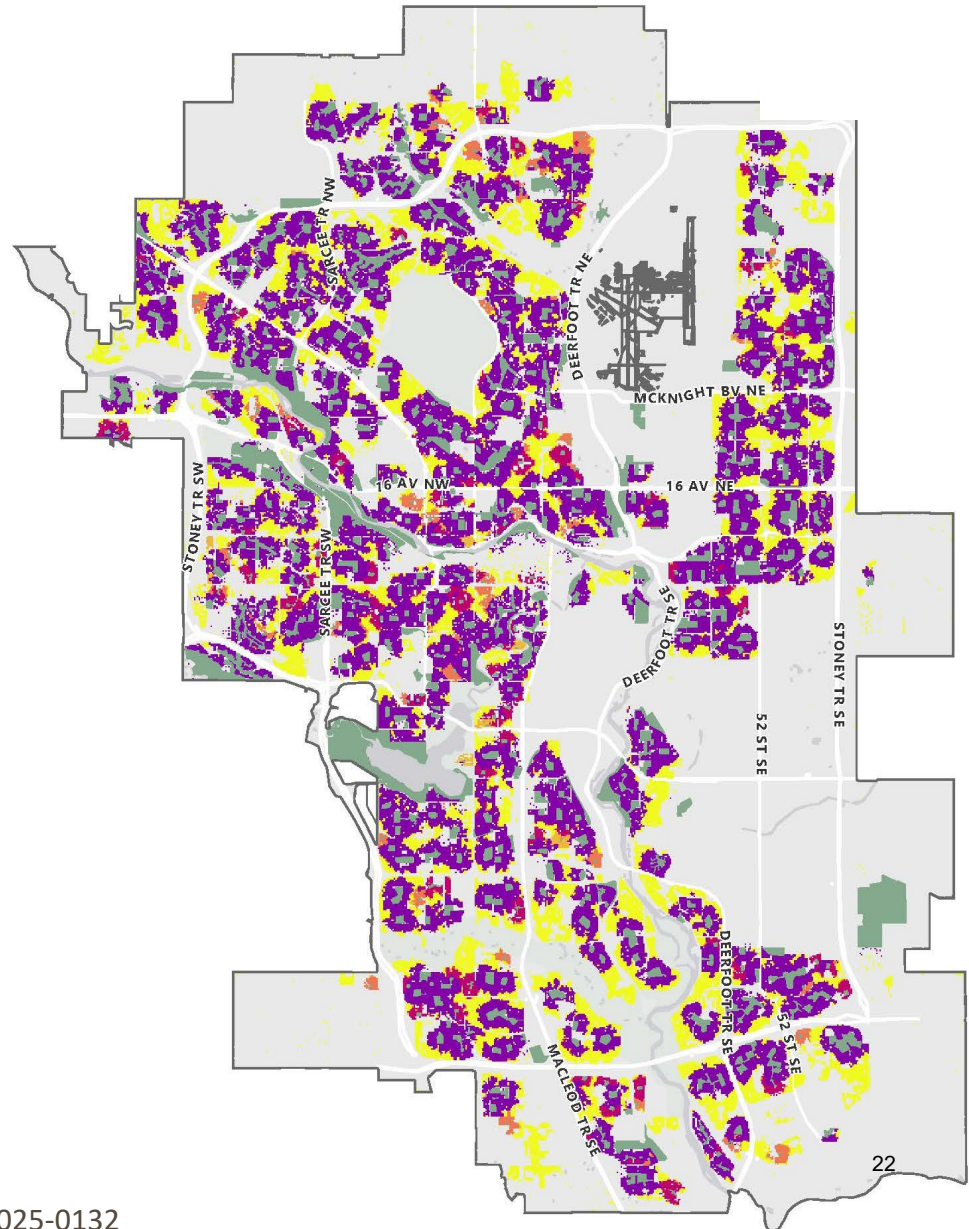
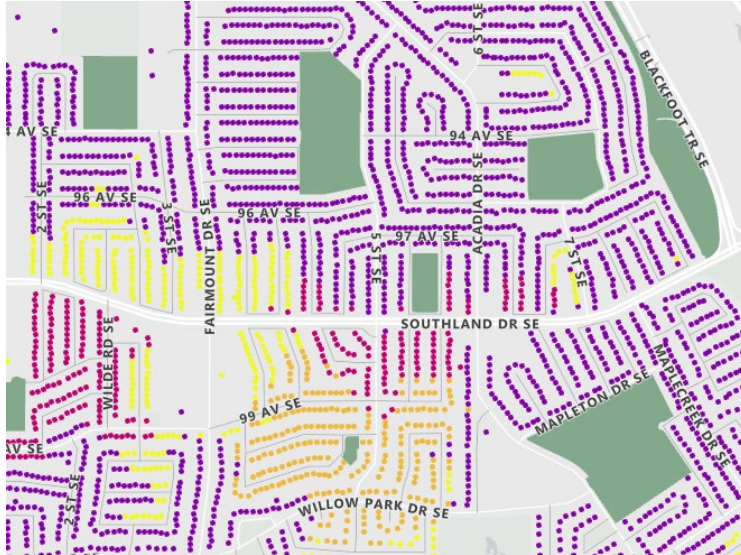
Driving Access to Regional Parks



400 Metre Access to Parks, Natural Areas, and Regional Amenities





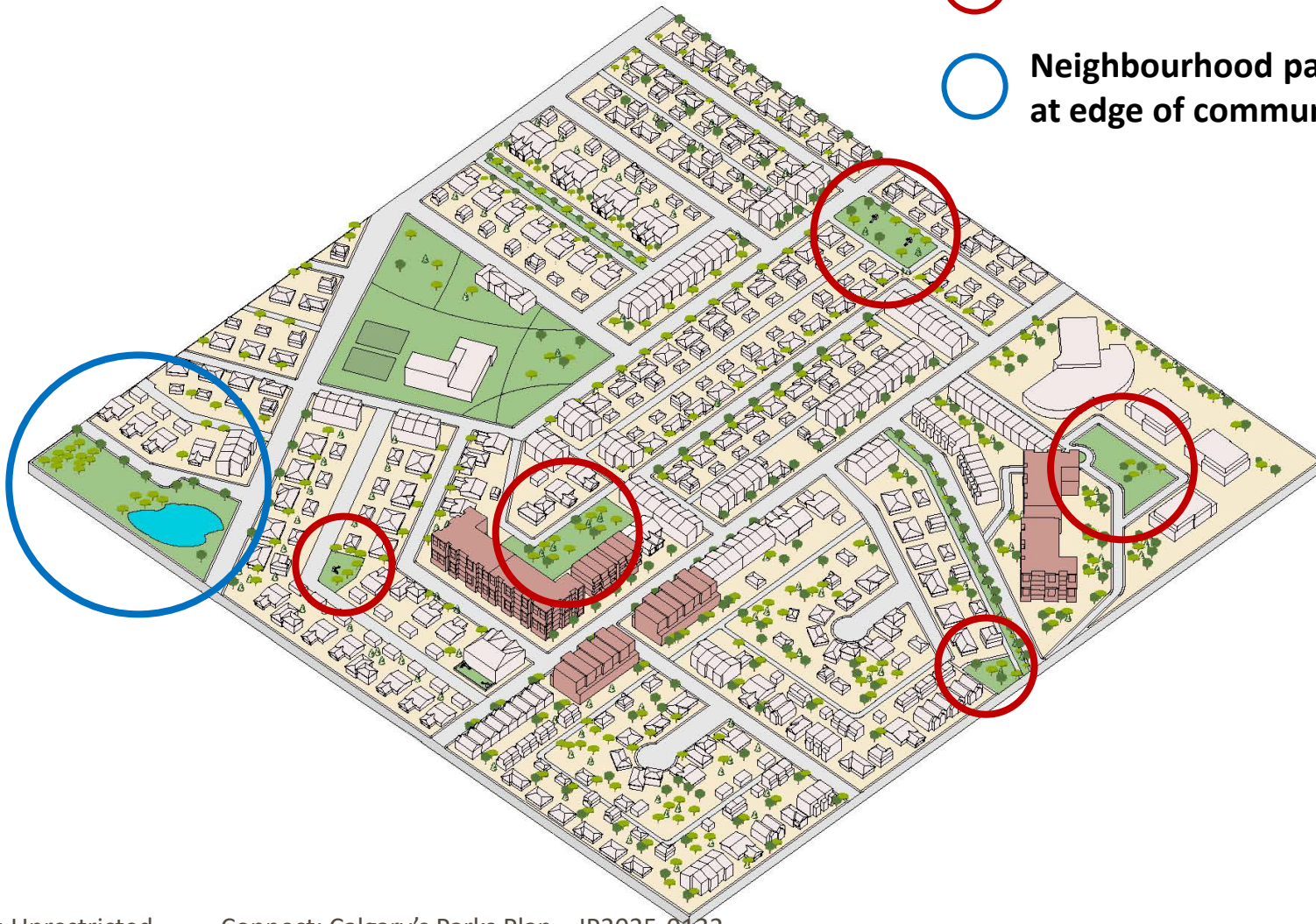
400 Metre Access to Multifunctional Parks



- High Access (> 2 ha)
- More Access (1-2 ha)
- Less Access (0.4-1 ha)
- Low Access (0-0.4 ha)
- No Access

Disconnected Park System Example

-  Small, disconnected parks
-  Neighbourhood park located at edge of community



Open Space Plan

Regional Park
District Park
Community Park
Neighbourhood Park
Subneighbourhood Park
Linear Park
Plazas
High School
Junior High School
Elementary School



Connect: Calgary's Parks Plan

The Park System

Parks
Regional
Neighbourhood
Linear
Subneighbourhood
Plazas
Joint Use Sites
Community
Association Sites

Natural Areas
Natural Areas
Naturalized Land
Naturalized Asset
Environmental
Reserve
Conservation
Reserve

Open Space
Roundabouts
Public Utility Lots
Publicly Accessible
Private Open Space
Regional Amenities
Boulevards
Roadside Greens

Ecological Network, Urban Forest, Cultural Landscapes

Neighbourhood Parks



- Multifunctional focal point for activity and programming
- Larger than 1 hectare
- Centrally located
- On/near collector road
- Adjacent to transit
- 1/3 of perimeter should be street frontage

Linear Parks



- Attractive environment for walking, wheeling and passive recreation
- Connect parks, habitat corridors and community destinations
- 13 metres - 20 metres wide
- Accommodate amenities (e.g. seating, shade)

Subneighbourhood Parks



- Supplement neighbourhood and linear park amenities
- 0.4 hectares to 1 hectares
- Located to enhance visibility and access
- Programmed for multifunctionality