



Stonegate Landing Municipal Development Plan and Northeast Industrial Area Structure Plan Amendments

2025 March 4

CITY OF CALGARY
RECEIVED
IN COUNCIL CHAMBER

MAR 04 2025

ITEM: 7.3.1 C2025-024
Distrib - Presentation 1
CITY CLERK'S DEPARTMENT



RECOMMENDATIONS:

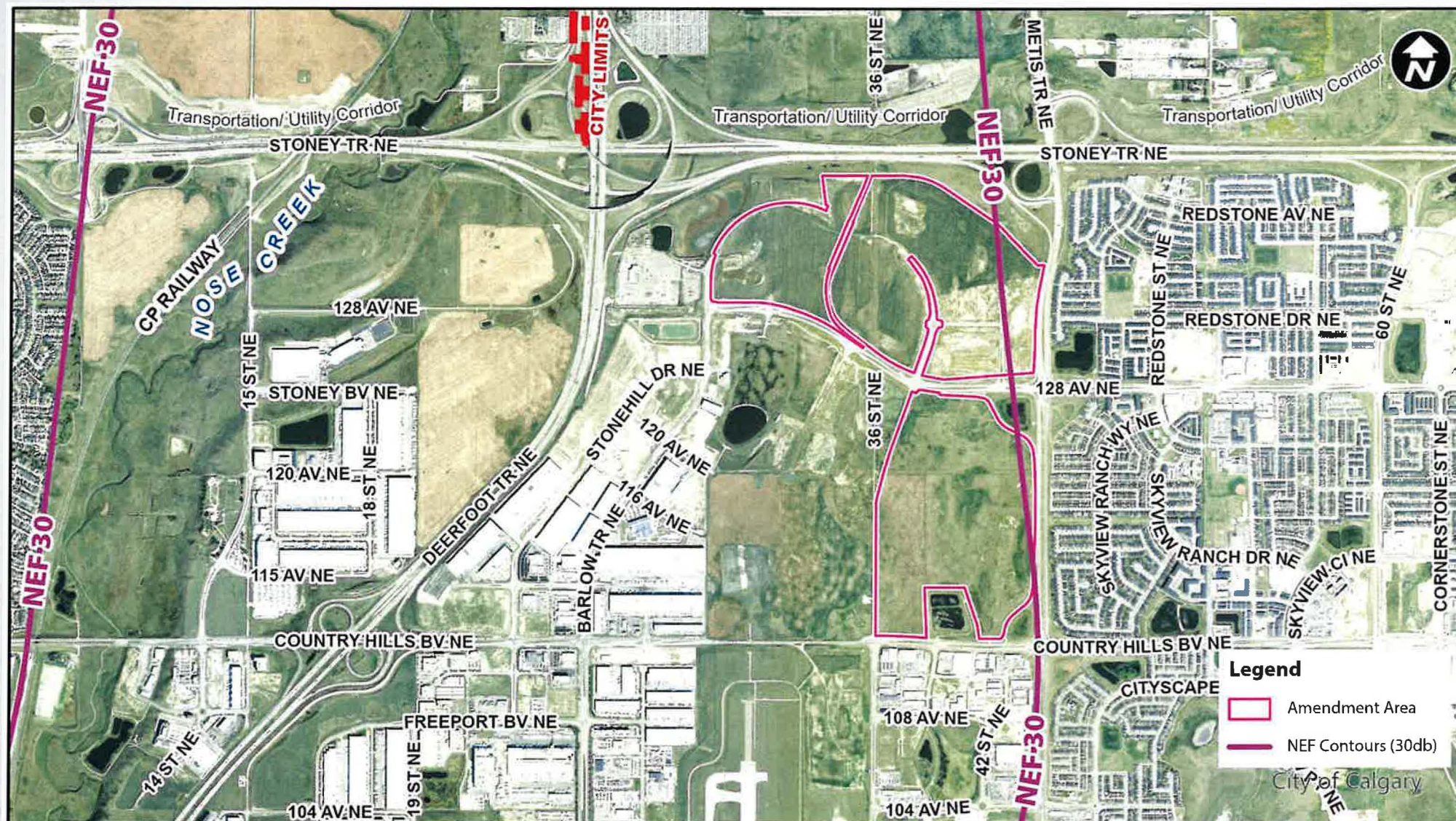
That Council:

1. Give three readings to the proposed bylaw for the amendments to the Municipal Development Plan; and
2. Give three readings to the proposed bylaw for the amendments to the Northeast Industrial Area Structure Plan.

Notice of Motion EC2025-0121 Approved 2025 January 28

1. Amendments to the Municipal Development Plan, to enable residential within the Northeast Industrial ASP;
2. Amendments to the Northeast Industrial ASP, to enable residential within the lands included in LOC2024-0171 through development of a Comprehensive Planning Overlay;
3. Advance to Council without prior consideration at Calgary Planning Commission;
4. Subsequent amendments to the Northeast Industrial ASP, land use amendment, Outline Plan and any other statutory plan amendments, returning to a Public Hearing of Council no later than March 31, 2026.

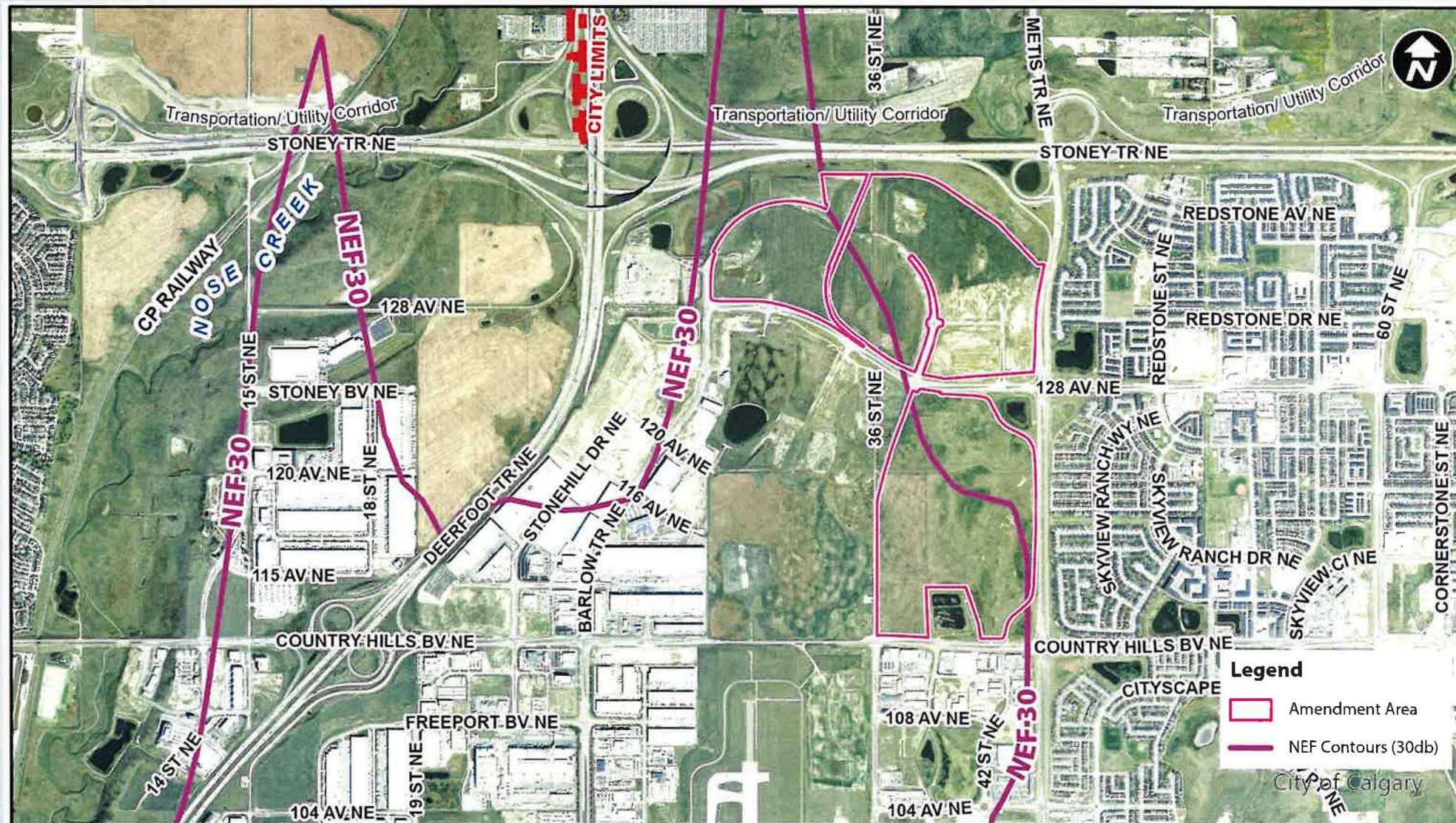




Previous NEF
Contours
(prior to
August 2021)

Parcel Size:

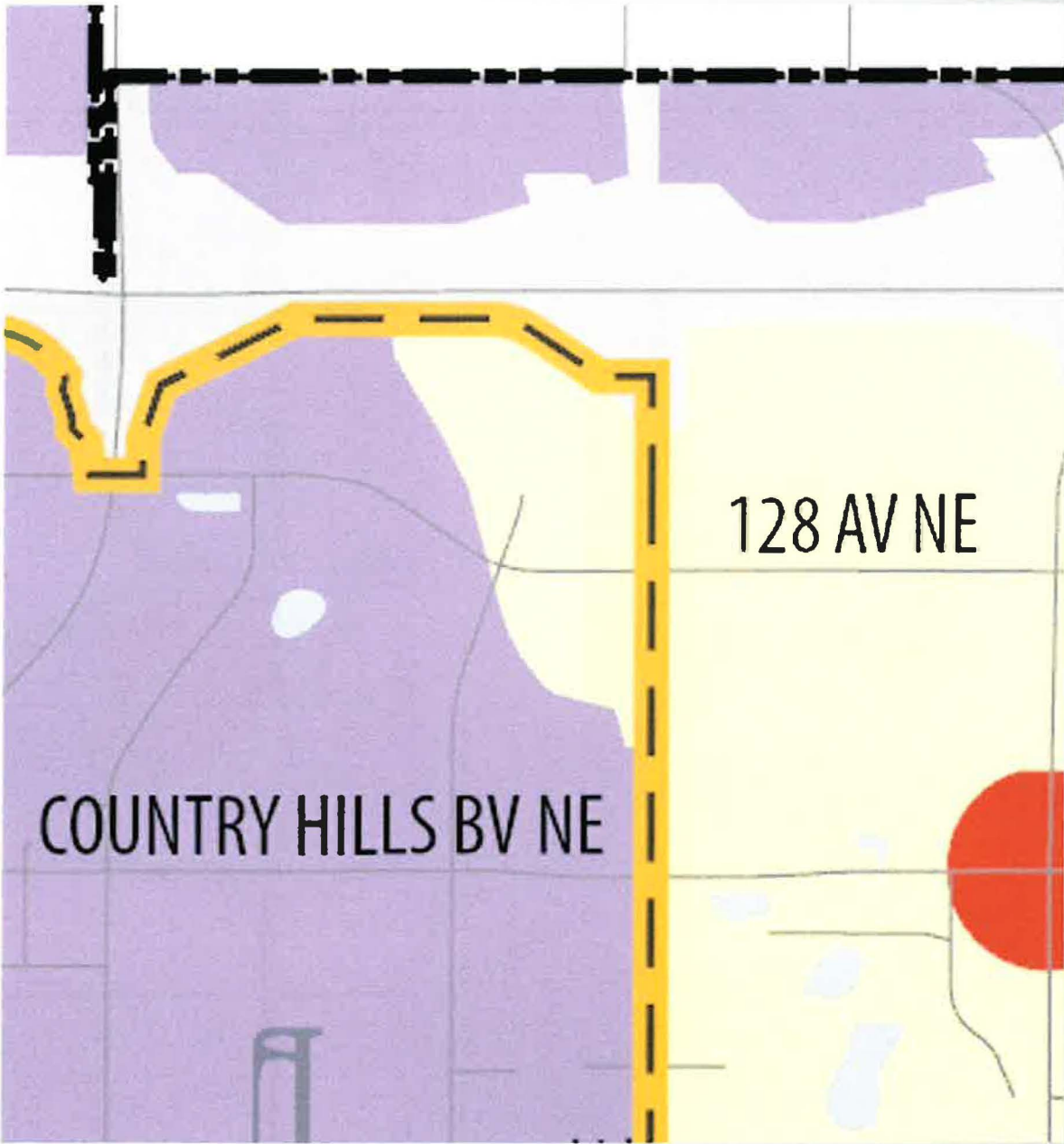
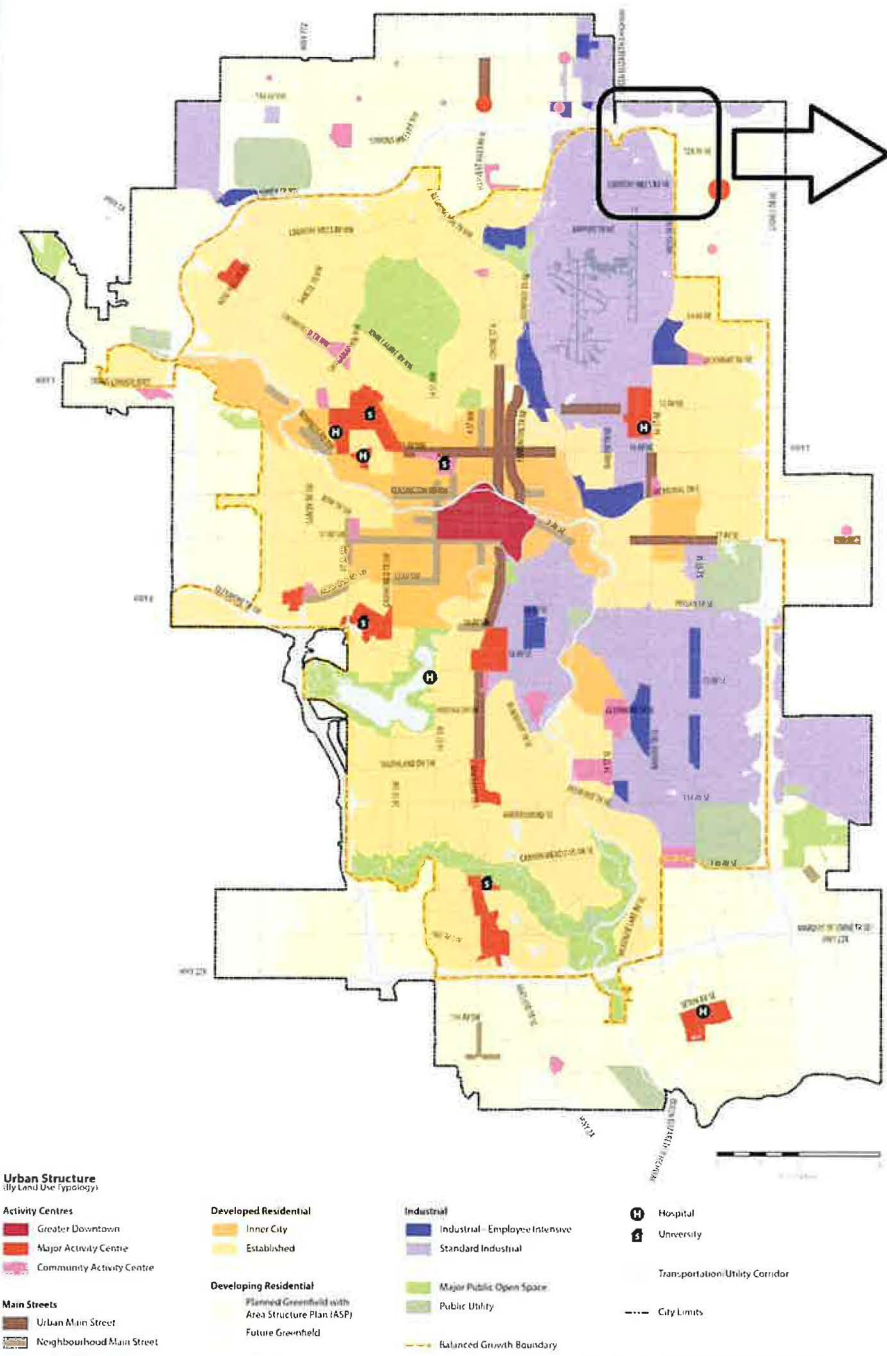
200 ha



Changes to NEF Contours approved by the Province of Alberta (August 2021)

Parcel Size:

200 ha



**Northeast Industrial
Area Structure Plan**

Map 3

Land Use Concept

0 250 500 750 1,000

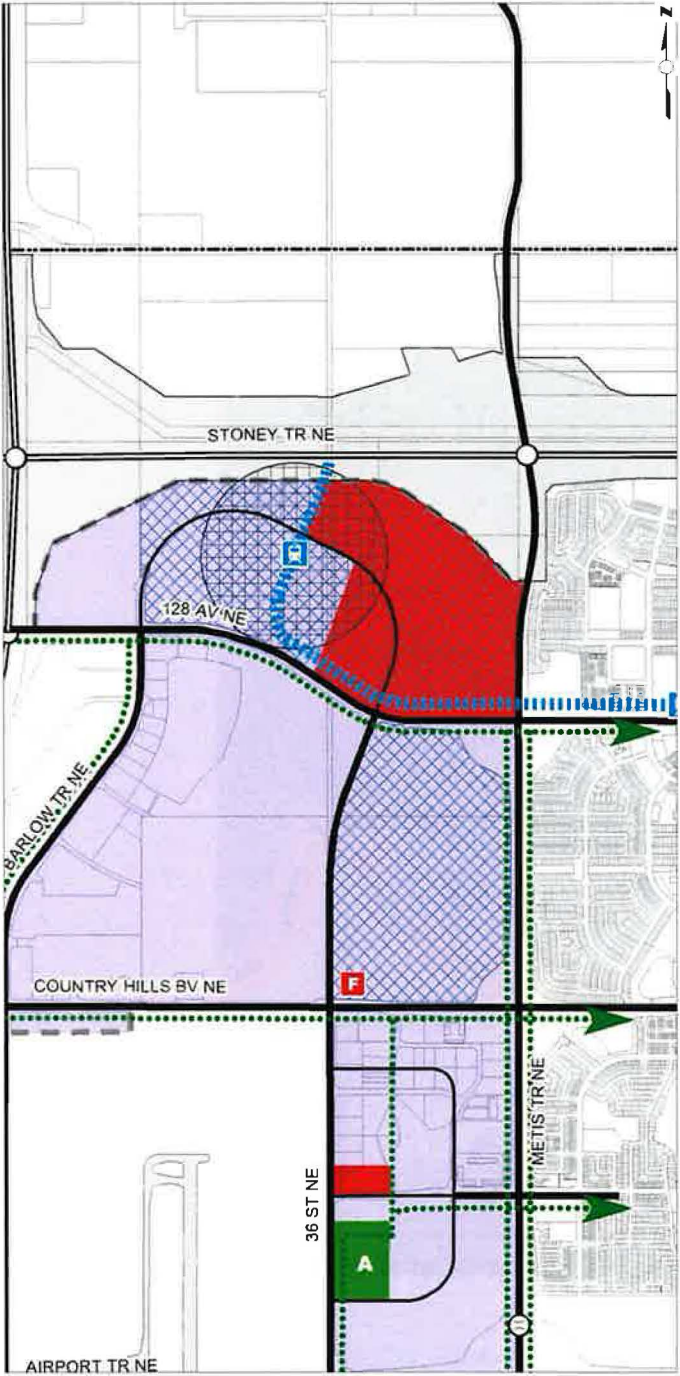
Metres

Legend

- Plan Area Boundary
- City Limits
- Transportation/Utility Corridor
- Business/Industrial Area
- Gateway Commercial Area
- Regional Athletic Park
- Fire Station Site
- Transit Station Planning Area
- Comprehensive Planning Overlay
- Regional Pathway
- Expressway (Skeletal Road)
- Expressway (Skeletal Road) Tunnel
- Major Road (Arterial Street)
- Internal Road
- Full Interchange
- Partial Interchange
- Potential Pedestrian Overpass
- Railway
- LRT Alignment
- LRT Station
- Airport Transit Connection (Technology TBD)

Approved 2P2007
Amended 26P2013

This map is conceptual only. No measurements of
distances or areas should be taken from this map.



RECOMMENDATIONS:

That Council:

1. Give three readings to the proposed bylaw for the amendments to the Municipal Development Plan; and
2. Give three readings to the proposed bylaw for the amendments to the Northeast Industrial Area Structure Plan.

Supplementary Slides

- LEGEND**
- Single detached dwelling
 - Semi-detached / duplex detached dwelling
 - Rowhouse / multi-residential
 - Commercial
 - Heavy Industrial
 - Light Industrial
 - Parks and Openspace
 - Public Service
 - Service Station
 - Vacant
 - Transportation, Communication, and Utility
 - Rivers, Lakes
 - Land Use Site Boundary

