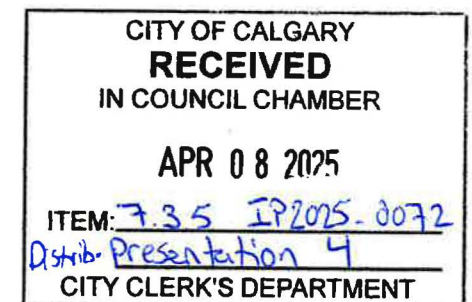




Chinook Communities LAP

Submission to City Council, April 1, 2025



Agenda

Parkhill
COMMUNITY ASSOCIATION

-
- General feedback from the February 27th IPC Meeting
 - Address reasonable, community specific feedback given the material shortfalls in the Building Context and Urban Form expressed within the LAP
 - **Appendix**
 - Additional Neighbourhood Photos
 - IPC Submission February 27th, 2025
 - Letters from Community members

IPC Meeting Follow Up

Parkhill
COMMUNITY ASSOCIATION

-
- The City's team indicated that they had multiple engagement sessions and made several concessions
 - 3 storey limit on several of the core residential streets
 - Removal of a Neighbourhood Connector south of 42nd Ave
 - Unfortunately, they maintained the Neighbourhood Connector designation on part of Stanley Rd, 38A Avenue and 38th Avenue (plus a bit of 1A St)
 - The planners also applied an inconsistent use of the Building Context relative to other Chinook LAP neighbourhoods

Why Does Engagement Matter?

Parkhill
COMMUNITY ASSOCIATION

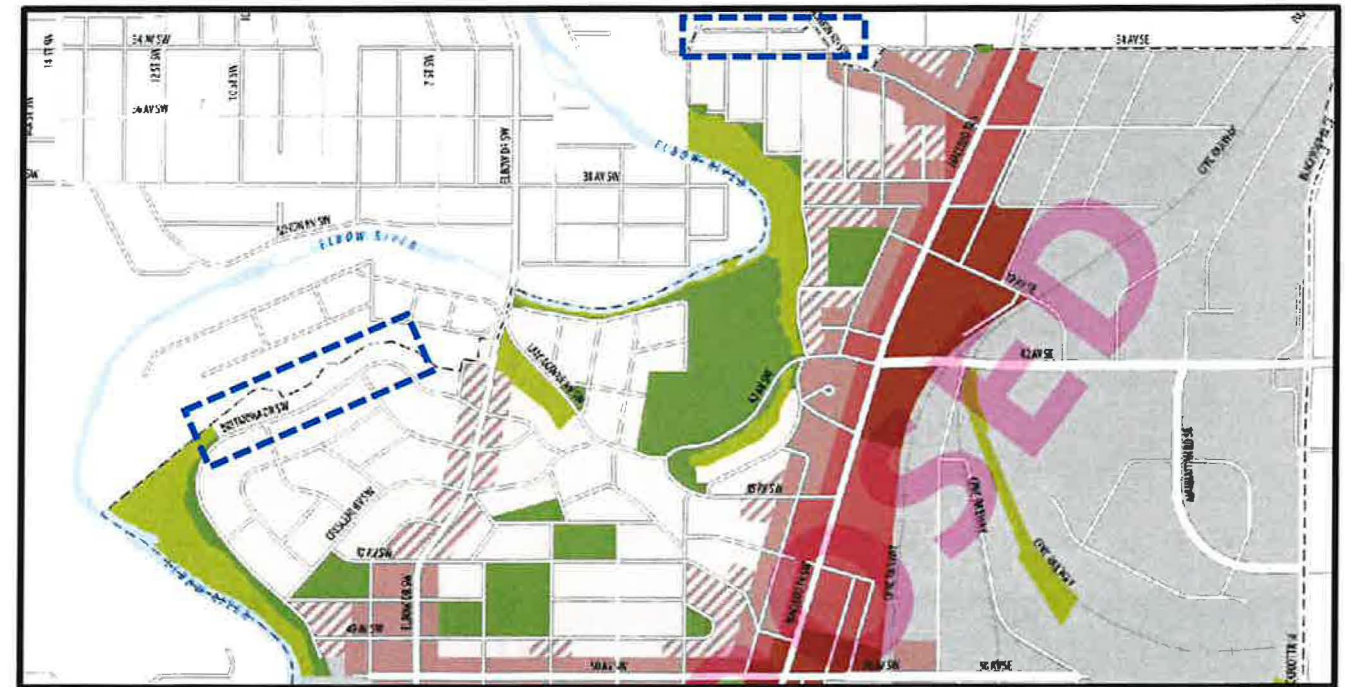
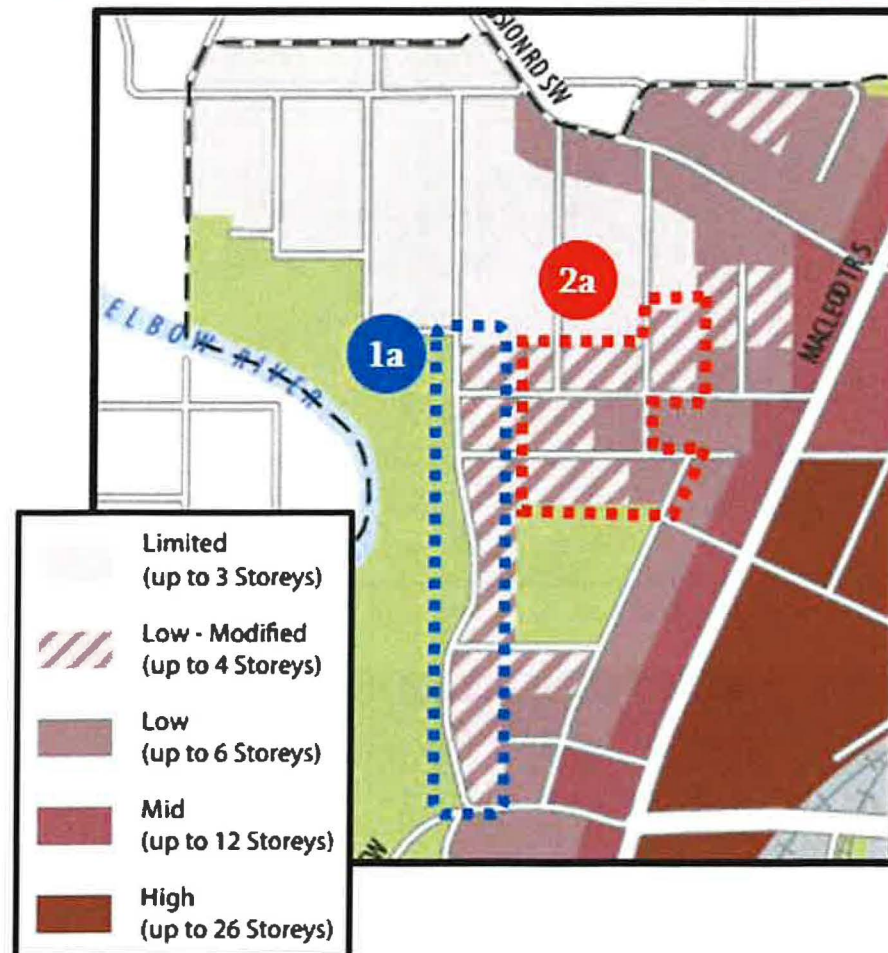
According to the City's Website "Engage" is
Defined as:

Meaningful dialogue. Informed decisions.

The last public sessions **skipped the dialogue, informed** residents of the final map and shut down opposition

Inconsistent Application 1a

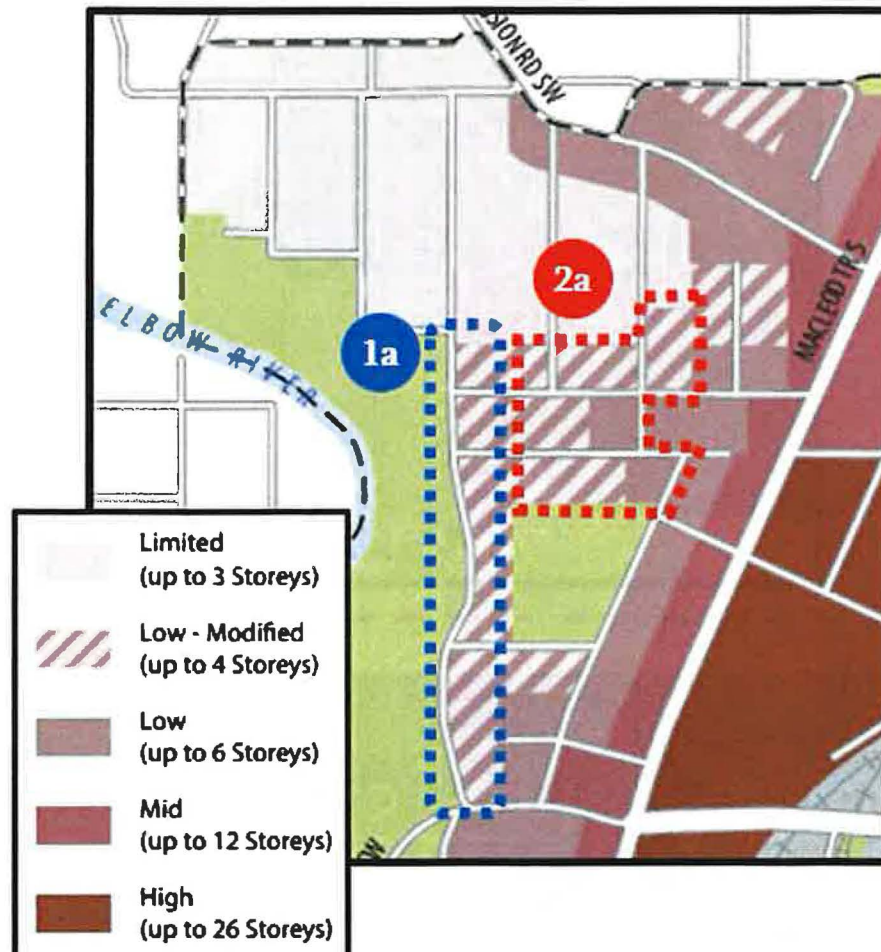
Parkhill
COMMUNITY ASSOCIATION



1a – REQUEST: Change Building Context to Limited on 1A St

Inconsistent Application 2a

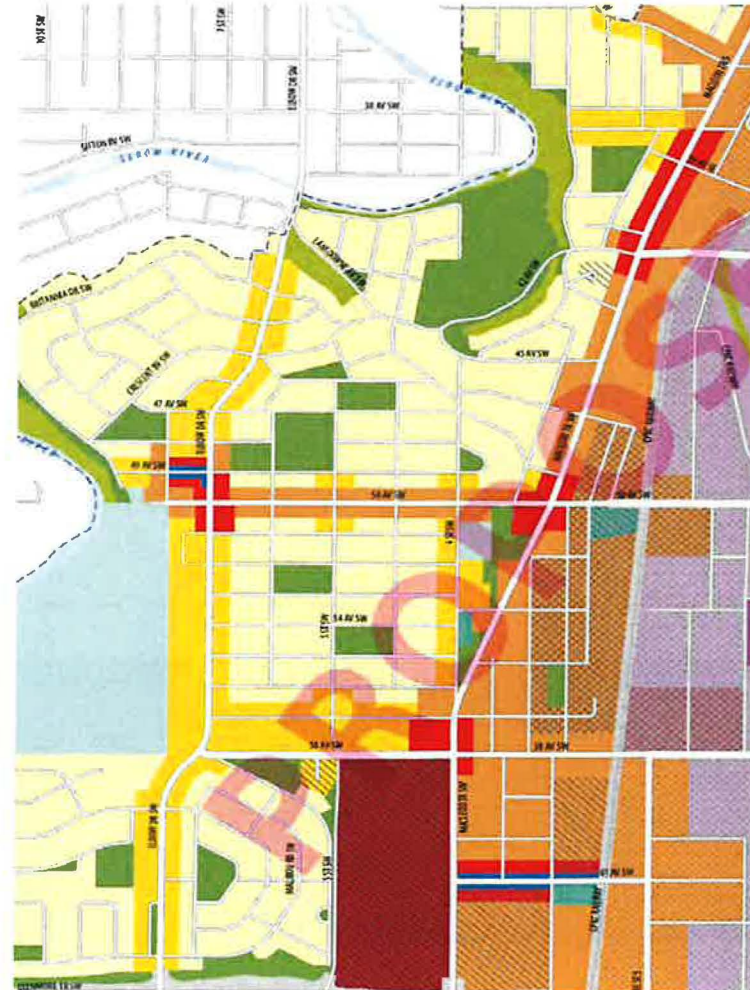
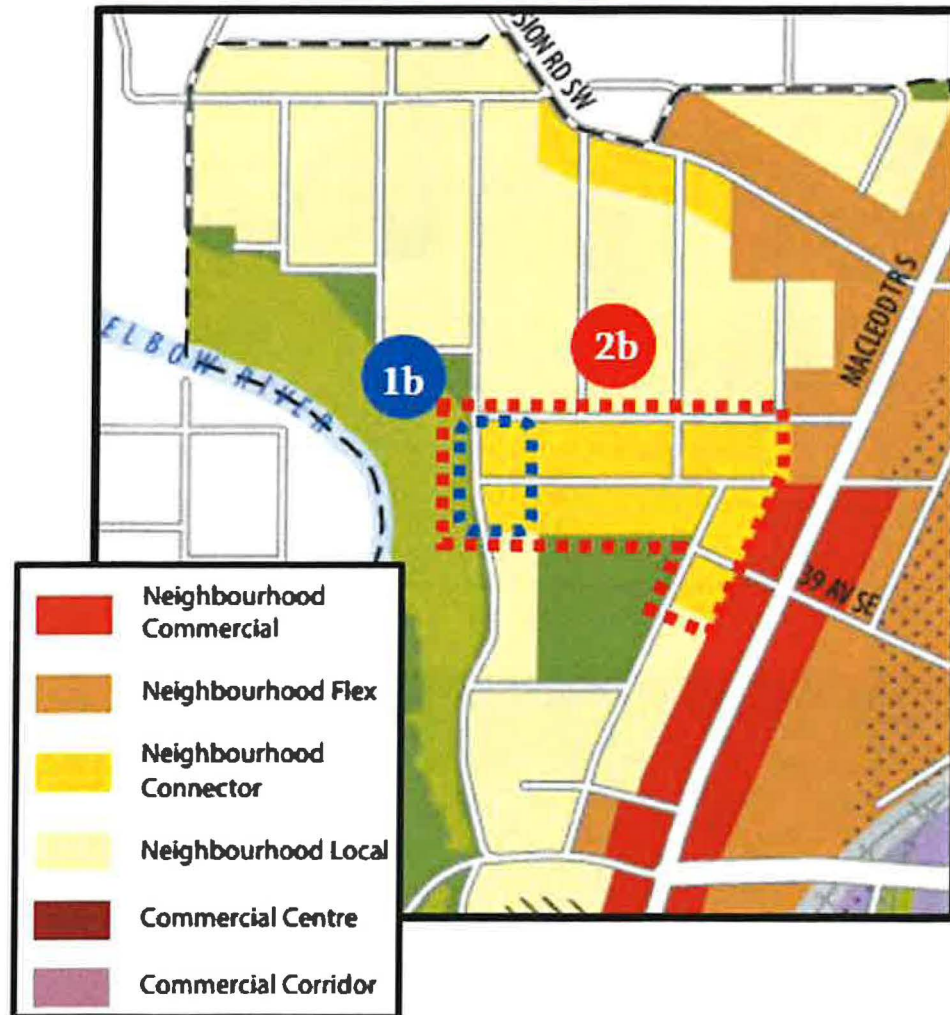
Parkhill
COMMUNITY ASSOCIATION



2a – REQUEST: Change Building Context to Limited

Inconsistent Application 1b

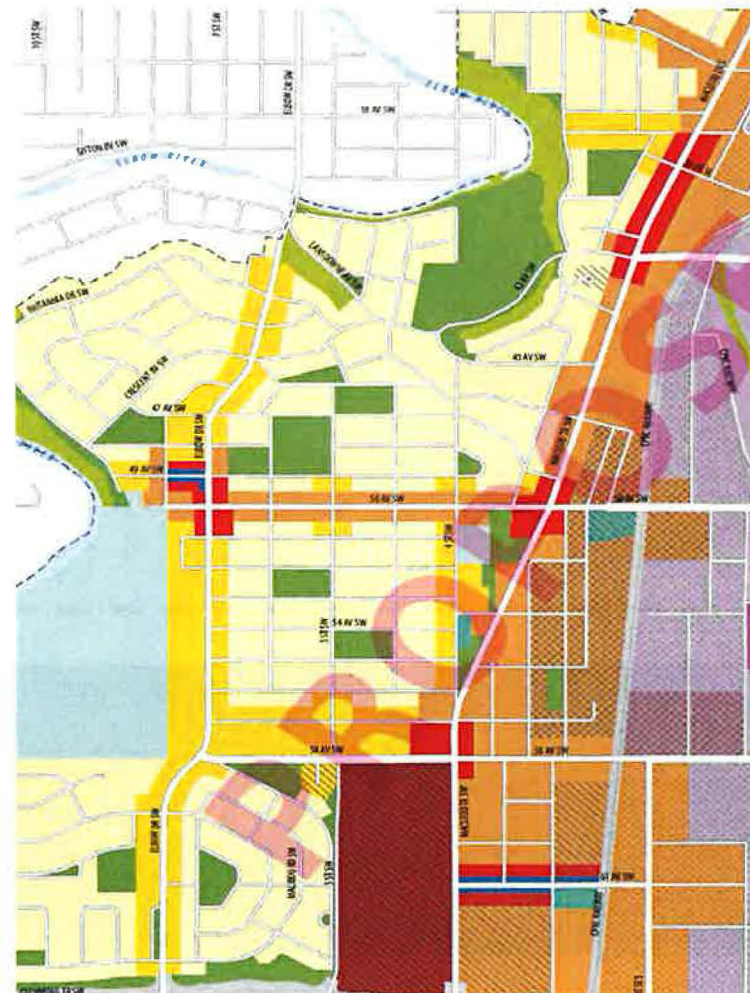
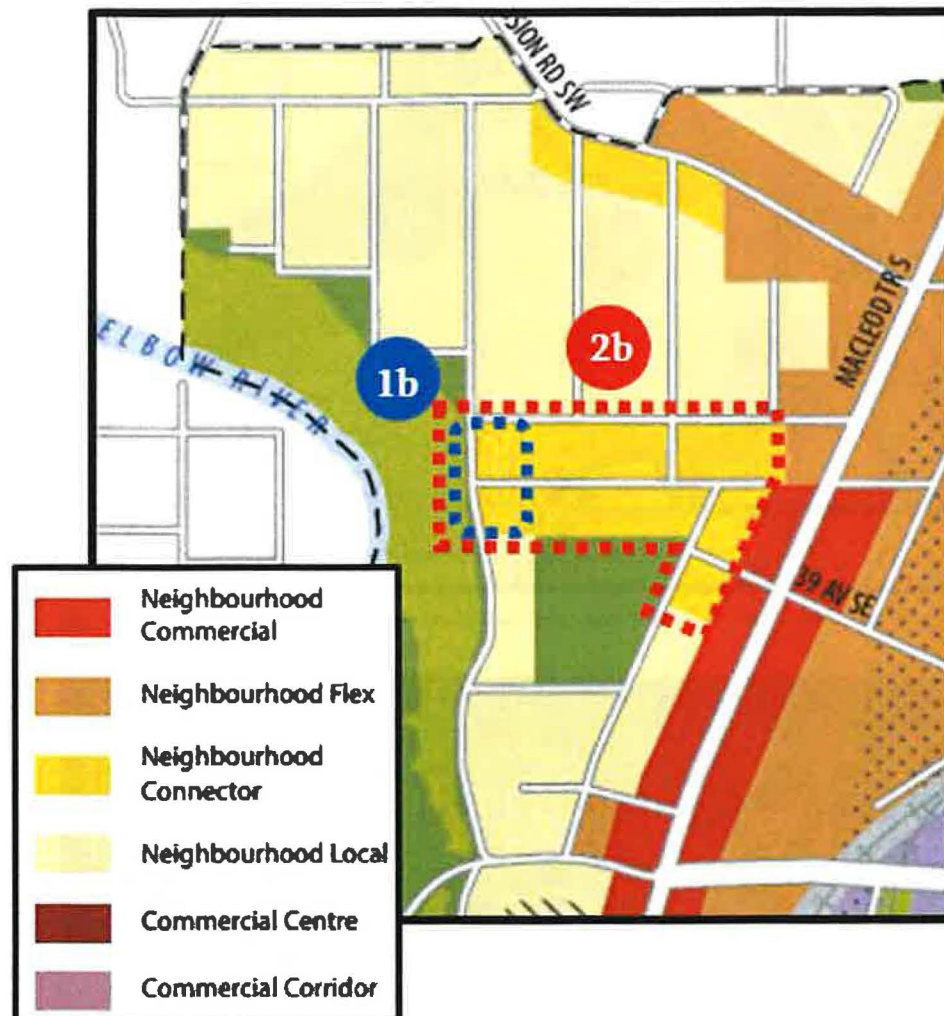
Parkhill
COMMUNITY ASSOCIATION



1b – REQUEST:
Change Urban
Form to
Neighbourhood
Local

Inconsistent Application 2b

Parkhill
COMMUNITY ASSOCIATION



2b – REQUEST:
Change Urban
Form to
Neighbourhood
Local

Fiscal Responsibility & Inclusion

Parkhill
COMMUNITY ASSOCIATION

- In 2019 / 2020, the City spent +\$5M to improve accessibility along 42nd Ave
- 42nd Ave west of Macleod Tr. boasts wide, wheelchair accessible sidewalks that provide easy access to Stanley Park

42 Avenue S.E. Complete Streets Project

engage.calgary.ca/42Avenue

Home > 42 Avenue S.E. Complete Streets Project

PROJECT OVERVIEW

What	Why	Where	Next Steps
<p>We are currently reviewing 42 Avenue S.E. between 1A Street S.W. and 12 Street S.E. to understand how to improve the walking and biking experience, and provide better access and connections in the area.</p> <p>This spring/summer, we will be working with Calgarians to identify barriers and understand how to best improve the design of this important corridor.</p> <p>The new facilities will:</p> <ul style="list-style-type: none">• Provide improved access to the 39 Avenue LRT station, the future Green Line Highfield station and other public transit locations• Create travel connections between the Elbow River and the Bow River• Link to destinations such as the Calgary Food Bank and local businesses like those that make up the Barley Belt (10 Craft breweries within a 7 km stretch)• Eliminate sidewalk gaps and missing links that currently exist in the sidewalk network along 42 Avenue S.E.• Improve accessibility along the corridor for all users• Not impact the number of vehicular lanes or access to businesses• Connect to a new multi-use pathway on the north side of 42 Avenue west of Macleod Trail, with connections to Stanley Park <p>We anticipate that Calgarians will be able to use the new facilities in Fall 2020.</p>			

Timeline

- ✓ **May 2019**
Project introduction
- ✓ **June/July 2019**
Share proposed design options with the public and request input
- ✓ **August 2019**
Design selection and report back to stakeholders
- ☆ **Fall/Winter 2019**
Design selection
- ☆ **Spring/Summer 2020**
Construction

[See less](#)

Key Dates

[Links](#)

Stanley Park Via 42nd Ave

Parkhill
COMMUNITY ASSOCIATION

Macleod Tr S – Turn Right at 42nd Avenue and Follow the Sidewalk



Stanley Park via 42nd Ave

Parkhill
COMMUNITY ASSOCIATION

Cross 1A ST and Proceed Down a Gentle Hill to Stanley Park



LAP Planning Inconsistencies

Parkhill
COMMUNITY ASSOCIATION

CHANGES REQUESTED:

- **1a** - Change Building Context to Limited on 1A Street
- **2a** – Change Building Context to Limited on 38A and near park on Stanley Rd; limit to low modified elsewhere to ensure smooth block transitions
- **1b** – Change Urban Form to Neighbourhood Local on 1A Street at 38A and 38th Ave T-intersections
- **2b** – Change Urban Form to Neighbourhood Local on Stanley Rd, 38 Avenue and 38A Avenue

Appendix

Stanley Park via Parkhill

Parkhill
COMMUNITY ASSOCIATION

A view of up and down the 39th Avenue Hill



Change Request Photos

Parkhill
COMMUNITY ASSOCIATION

Area 1a – the Ridge Escarpment on 1A St SW

Houses on 1A St also back on to the park as per request Area 2a



Change Request Photos

Parkhill
COMMUNITY ASSOCIATION

Area 1a – the Escarpment on 1A St SW with a “No Access to 42nd” sign



Change Request Photos

Parkhill
COMMUNITY ASSOCIATION

Area 1b – “local” view from 1A ST



Area 1b – “local” view from 38A Ave



Change Request Photos

Parkhill
COMMUNITY ASSOCIATION

**Area 1b - 38th Ave – view East to
Macleod (right turn only)**



**Area 1b - 38th Ave – view West to
T-intersection @1A ST**



Change Request Photos

Parkhill
COMMUNITY ASSOCIATION

Area 2a - view of T-intersection @38A & Stanley Rd & park below



Change Request Photos

Parkhill
COMMUNITY ASSOCIATION

Area 2b – view of the dead end & T-intersection @Stanley Rd & 38A



Change Request Photos

Parkhill
COMMUNITY ASSOCIATION

**Area 2b – view from Parkhill St
towards T-intersection @38A**



**Area 2b – view @38A of the Parkhill
St T-Intersection on the left**

