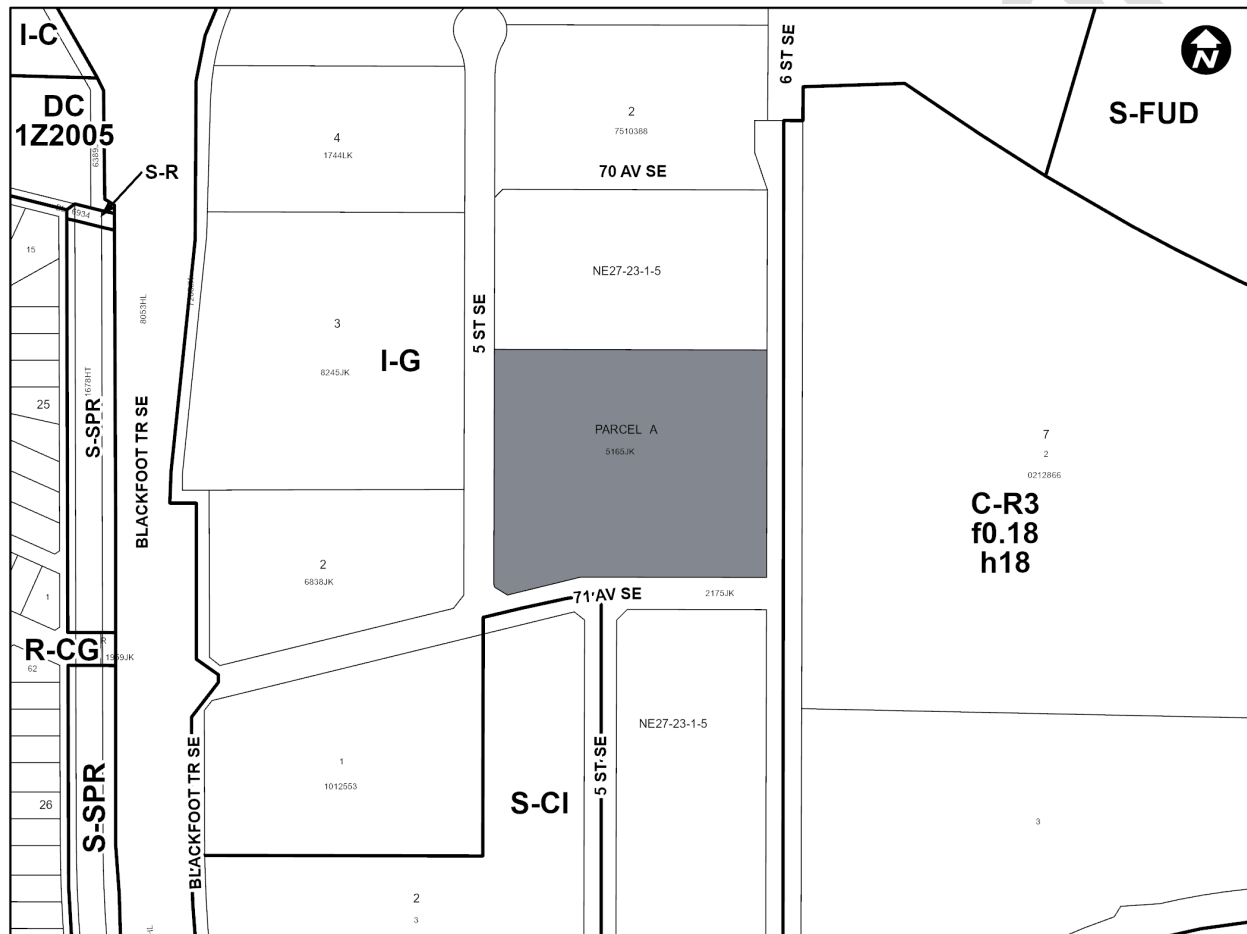
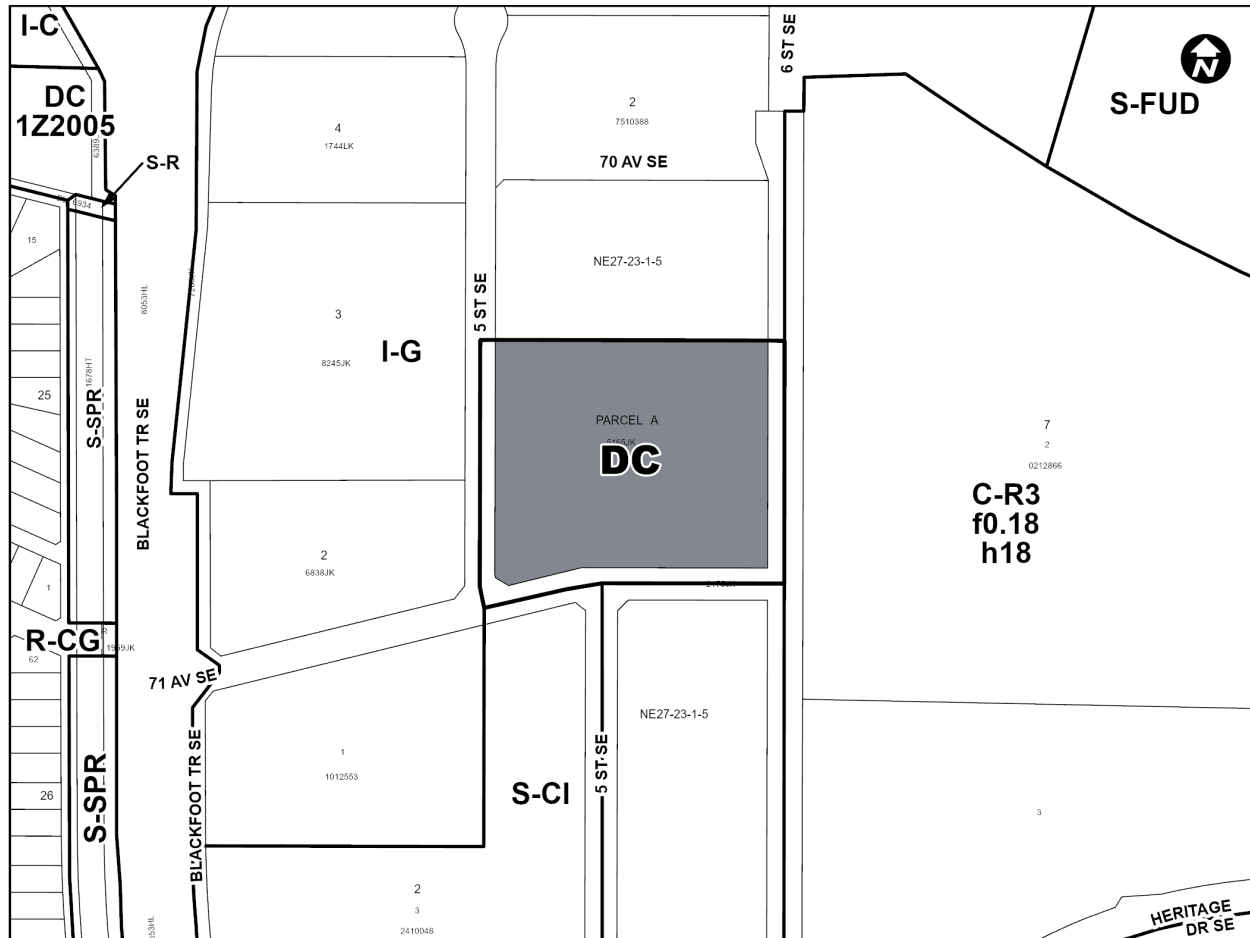


# Proposed Direct Control District

1. The Land Use Bylaw, being Bylaw 1P2007 of the City of Calgary, is hereby amended by deleting that portion of the Land Use District Map shown as shaded on Schedule "A" to this Bylaw and replacing it with that portion of the Land Use District Map shown as shaded on Schedule "B" to this Bylaw, including any land use designation, or specific land uses and development guidelines contained in the said Schedule "B".

## SCHEDULE A



**SCHEDULE B****DIRECT CONTROL DISTRICT****Purpose**

- 1 This Direct Control District Bylaw is intended to allow for additional support commercial uses.

**Compliance with Bylaw 1P2007**

- 2 Unless otherwise specified, the rules and provisions of Parts 1, 2, 3 and 4 of Bylaw 1P2007 apply to this Direct Control District Bylaw.

**Reference to Bylaw 1P2007**

- 3 Within this Direct Control District Bylaw, a reference to a section of Bylaw 1P2007 is deemed to be a reference to the section as amended from time to time.

**Permitted Uses**

- 4 The **permitted uses** of the District of the Industrial – General (I-G) Bylaw 1P2007 are the **permitted uses** in this Direct Control District.

**Discretionary Uses**

**5** The **discretionary uses** of the Industrial – General (I-G) District of Bylaw 1P2007 are the **discretionary uses** in this Direct Control District with the addition of:

- (a) **Drinking Establishment – Small;**
- (b) **Financial Institution;**
- (c) **Health Care Service;**
- (d) **Radio and Television Studio;**
- (e) **Retail and Consumer Service; and**
- (f) **Service Organization.**

**Bylaw 1P2007 District Rules**

**6** Unless otherwise specified, the rules of the Industrial – General (I-G) District of Bylaw 1P2007 apply in this Direct Control District.

**Additional Use Area Restrictions**

- 7**
- (1)** The maximum cumulative **use area** for **Drinking Establishment – Small** is 375.0 square metres.
  - (2)** The maximum cumulative **use area** for **Financial Institution** is 560.0 square metres.
  - (3)** The maximum cumulative **use area** for **Retail and Consumer Service** is 2800.0 square metres.
  - (4)** The maximum cumulative **use area** for **Service Organization** is 775.0 square metres.

**Relaxations**

**8** The **Development Authority** may relax the rules contained in Sections 6 and 7 of this Direct Control District Bylaw in accordance with Sections 31 and 36 of Bylaw 1P2007.