

Public Hearing of Council

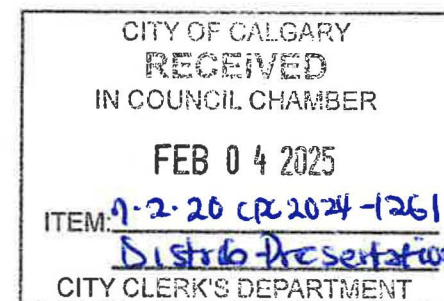
Agenda Item: 7.2.20

1



LOC2024-0230 / CPC2024-1261 Policy Amendment

February 4, 2025



Calgary Planning Commission's Recommendations:

That Council:

Give three readings to **Proposed Bylaw 17P2025** for the amendment to the Bridgeland-Riverside Area Redevelopment Plan (Attachment 2).



LEGEND

600m buffer from LRT station

LRT Stations

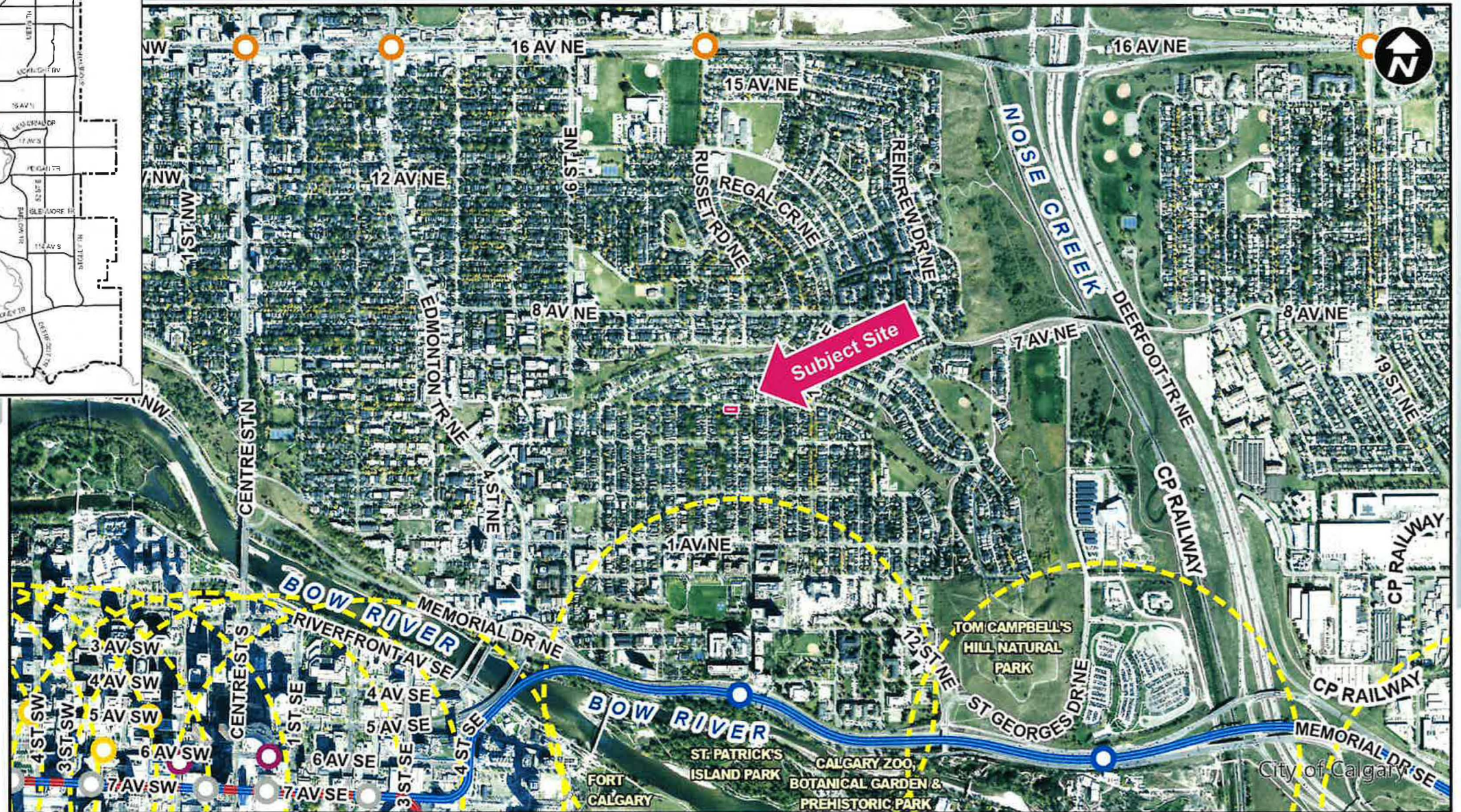
- Blue
- Downtown
- Red
- Green (Future)

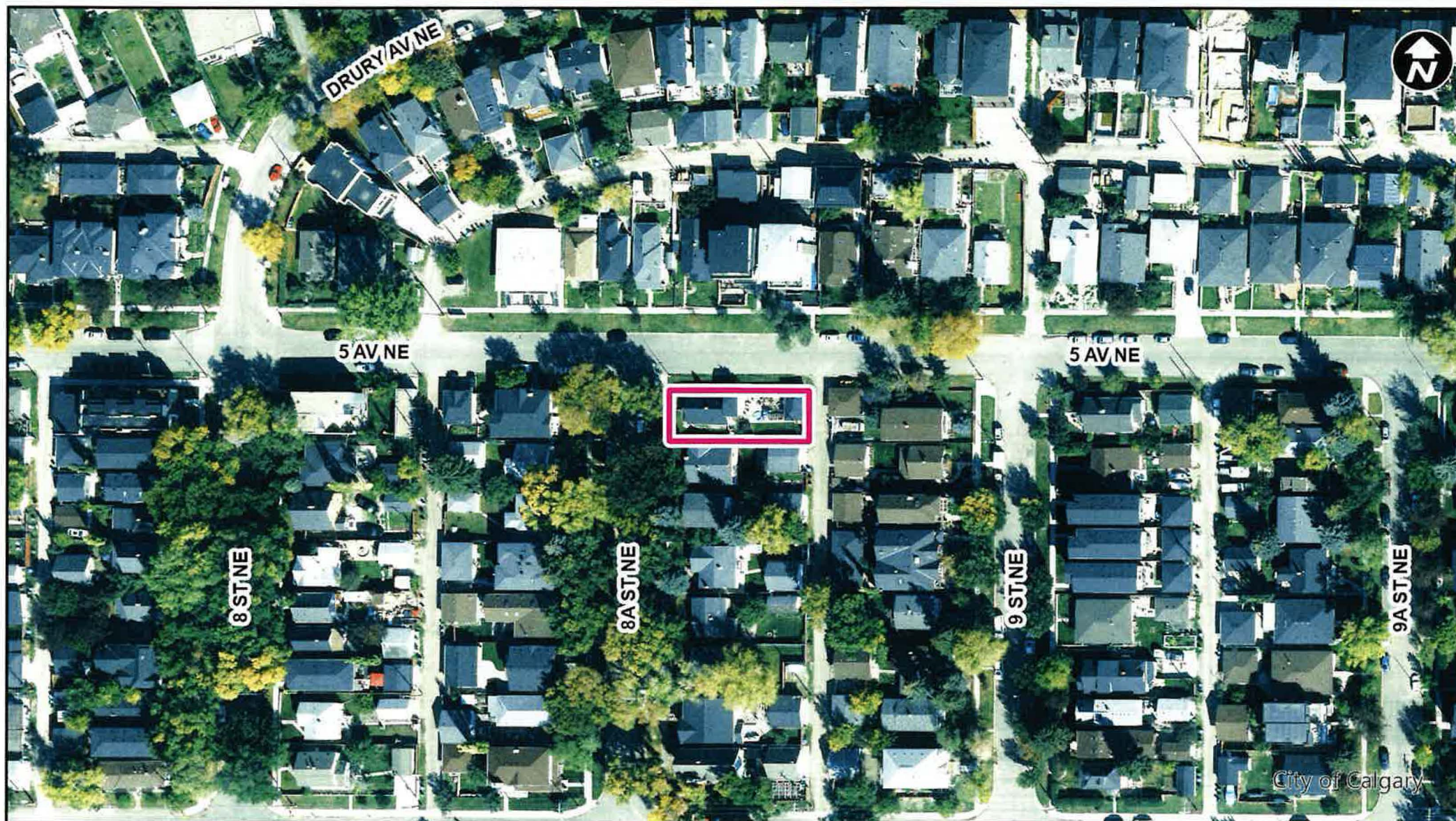
LRT Line

- Blue
- Blue/Red
- Red

Max BRT Stops

- Orange
- Purple
- Teal
- Yellow





Parcel Size:

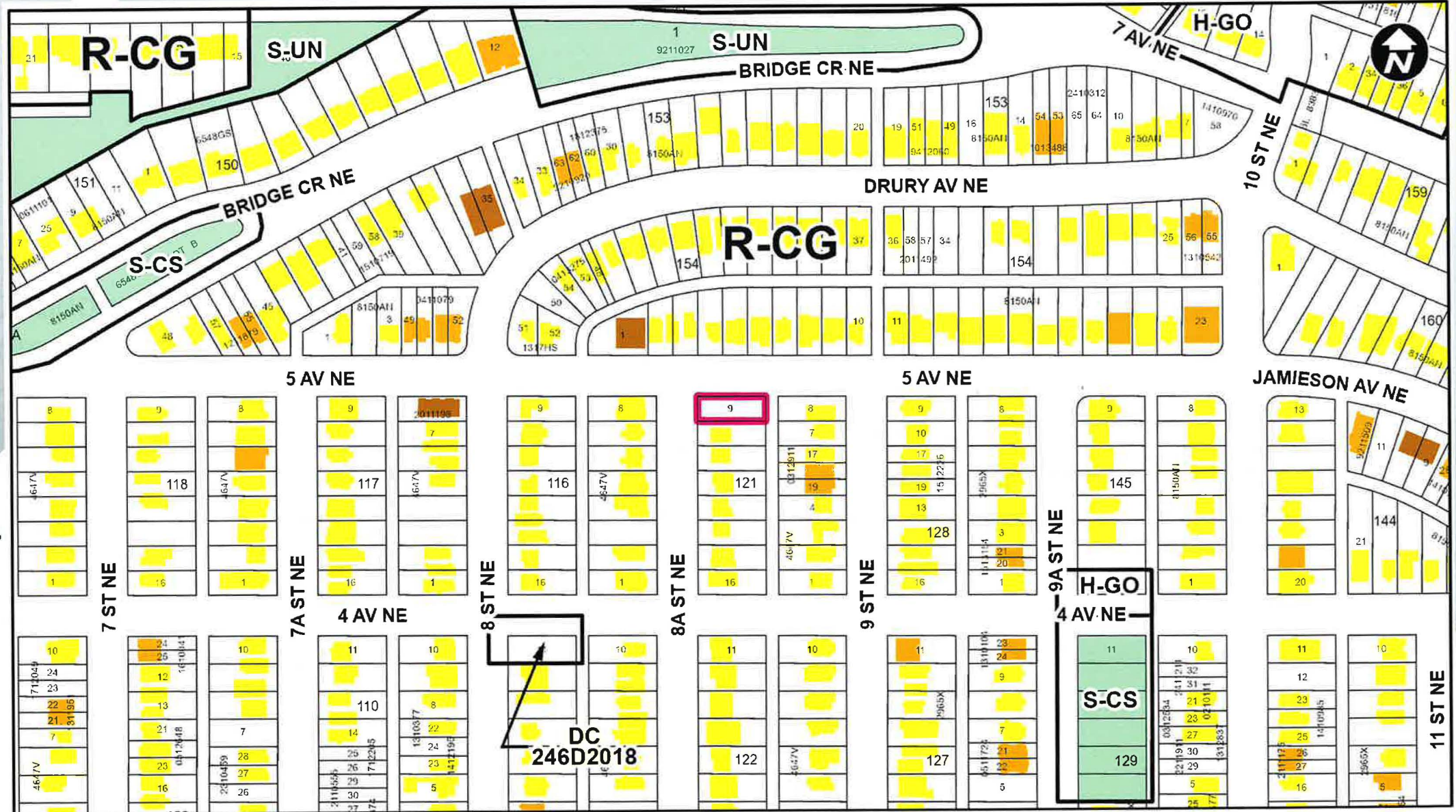
0.04 ha
12 m x 33 m

Surrounding Land Use

5

LEGEND

- Single detached dwelling
- Semi-detached / duplex detached dwelling
- Rowhouse / multi-residential
- Commercial
- Heavy Industrial
- Light Industrial
- Parks and Openspace
- Public Service
- Service Station
- Vacant
- Transportation, Communication, and Utility
- Rivers, Lakes
- Land Use Site Boundary



Policy Amendment to the Bridgeland-Riverside Area Redevelopment Plan

6

Proposed Amendment:

- In Part 2, Section 3 Residential, subsection Implementation, delete policy 2 and replace it with the following:
 2. That within the Conservation Area, the appropriate land uses are residential in nature and that the appropriate designation within the Land Use Bylaw would be R-2 with the exception of lands located at 438 – 8 Street NE, 523 – 8 Street NE, 525 – 9 Street NE, 502 – 9A Street NE, **and 528 – 8A Street NE** which are suitable for low density multi-residential development in the form of rowhouses, townhouses and stacked townhouses.

Calgary Planning Commission's Recommendations:

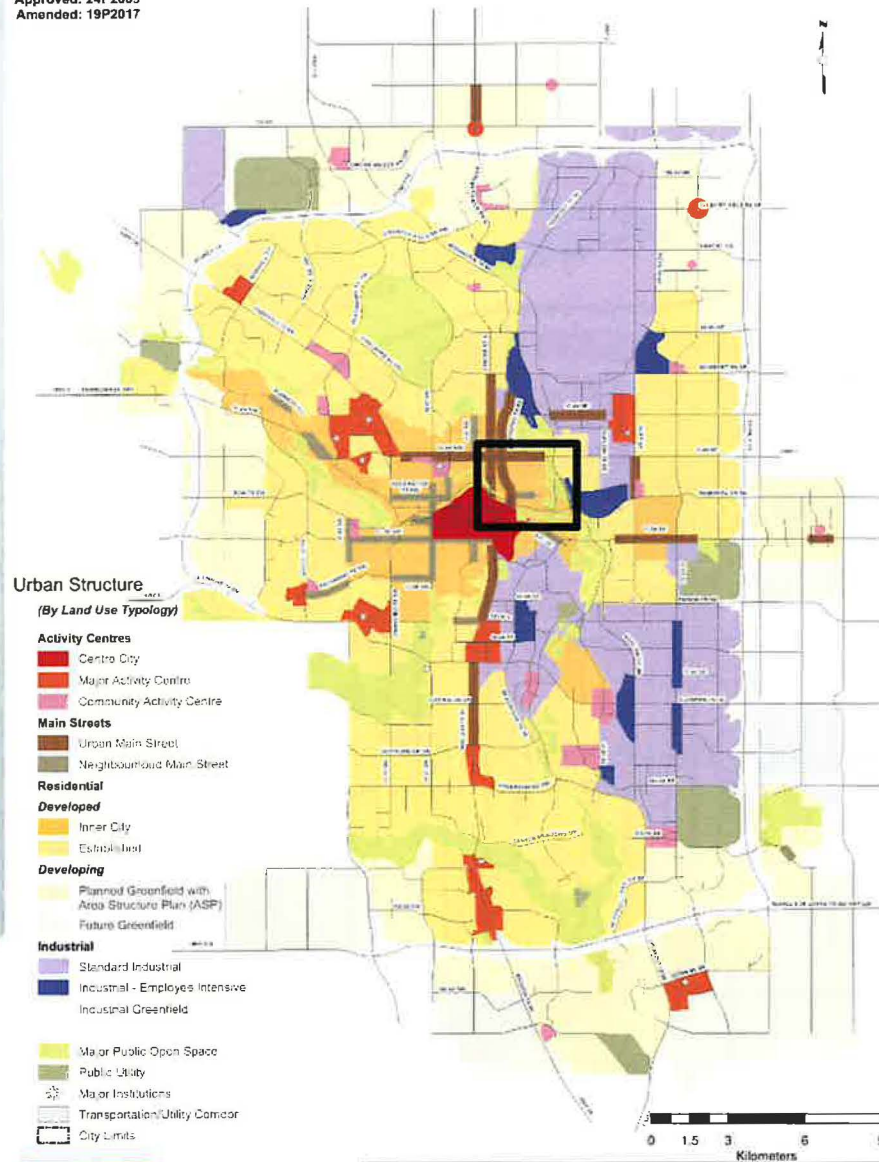
That Council:

Give three readings to **Proposed Bylaw 17P2025** for the amendment to the Bridgeland-Riverside Area Redevelopment Plan (Attachment 2).

Supplementary Slides



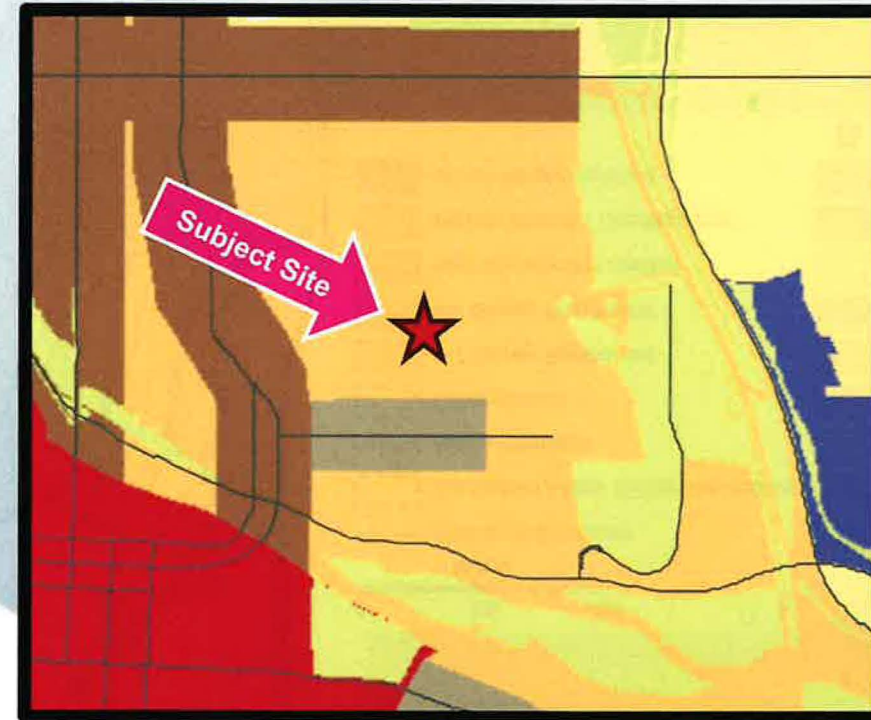




Urban Structure

City Policy Plan, Part 1, City of Calgary, Map, Urban Structure, MDP Urban Structure.mxd

This map represents a conceptual land use structure and transportation network for the city as a whole. The representation is made for the city as a whole and is not intended to be used for any specific site. The specific representation is made for the city as a whole and is not intended to be used for any specific site. The specific representation is made for the city as a whole and is not intended to be used for any specific site.



ARP Land Use Map 12



