

PBPCA SUBMISSION REGARDING PROPOSED GLENMORE LANDING PARKLAND LAND SALE

Presentation for Public Hearing

December 3, 2024

Safety Concerns

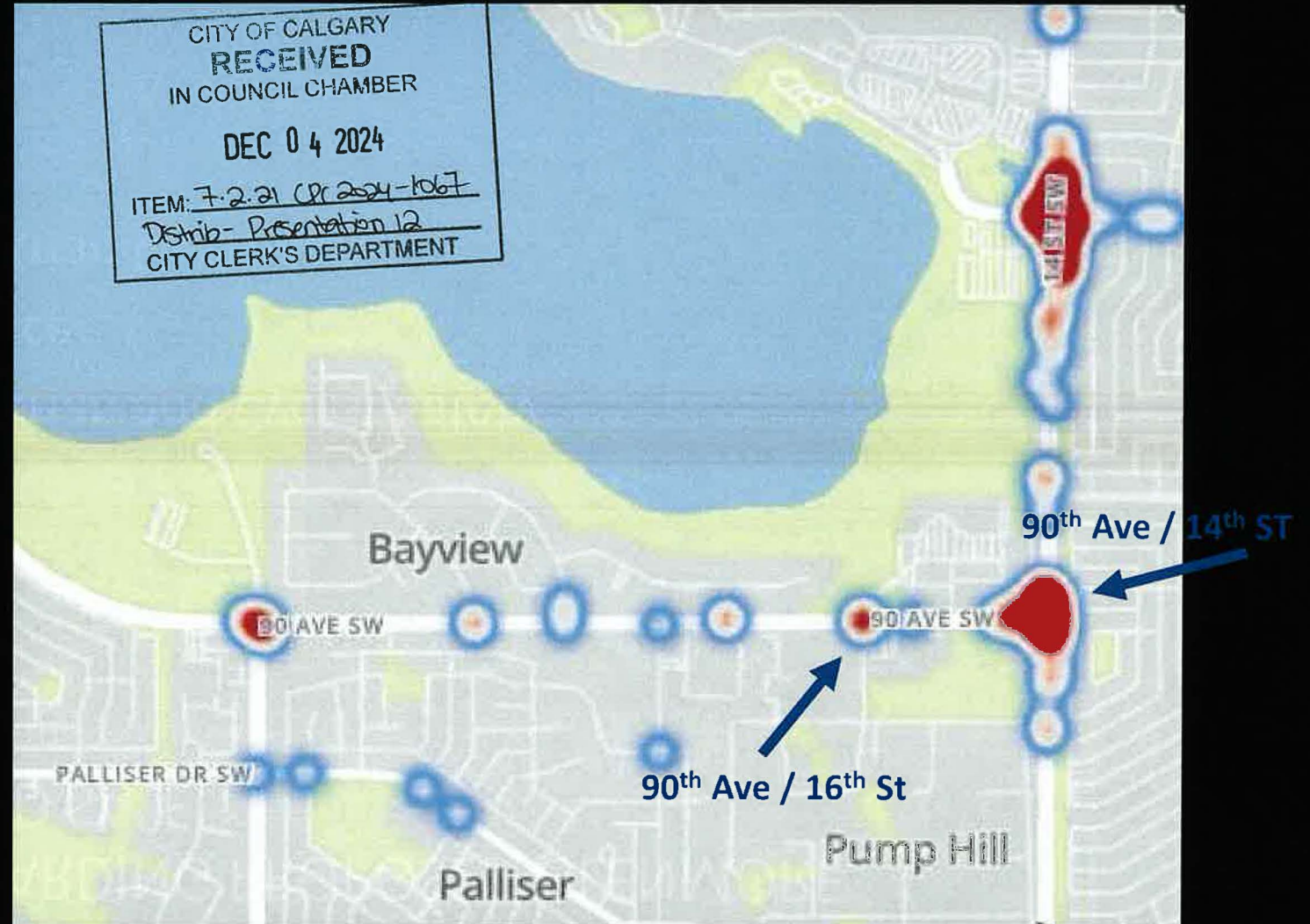
- Pedestrian and Cyclist Safety
- Black Ice
- Pedestrian Overpass

The Intersections in question today

This image is taken from the City of Calgary's Transportation/Transit Heat map - Based on all Traffic Incidents since 2016.

As you can see, the intersections at 90th Ave SW/ 16th St SW and at 90th Ave SW/14th St SW stand out today as being areas with repeated traffic accidents.

What are the impacts on safety when thousands of new residents increase traffic volumes by 33%?



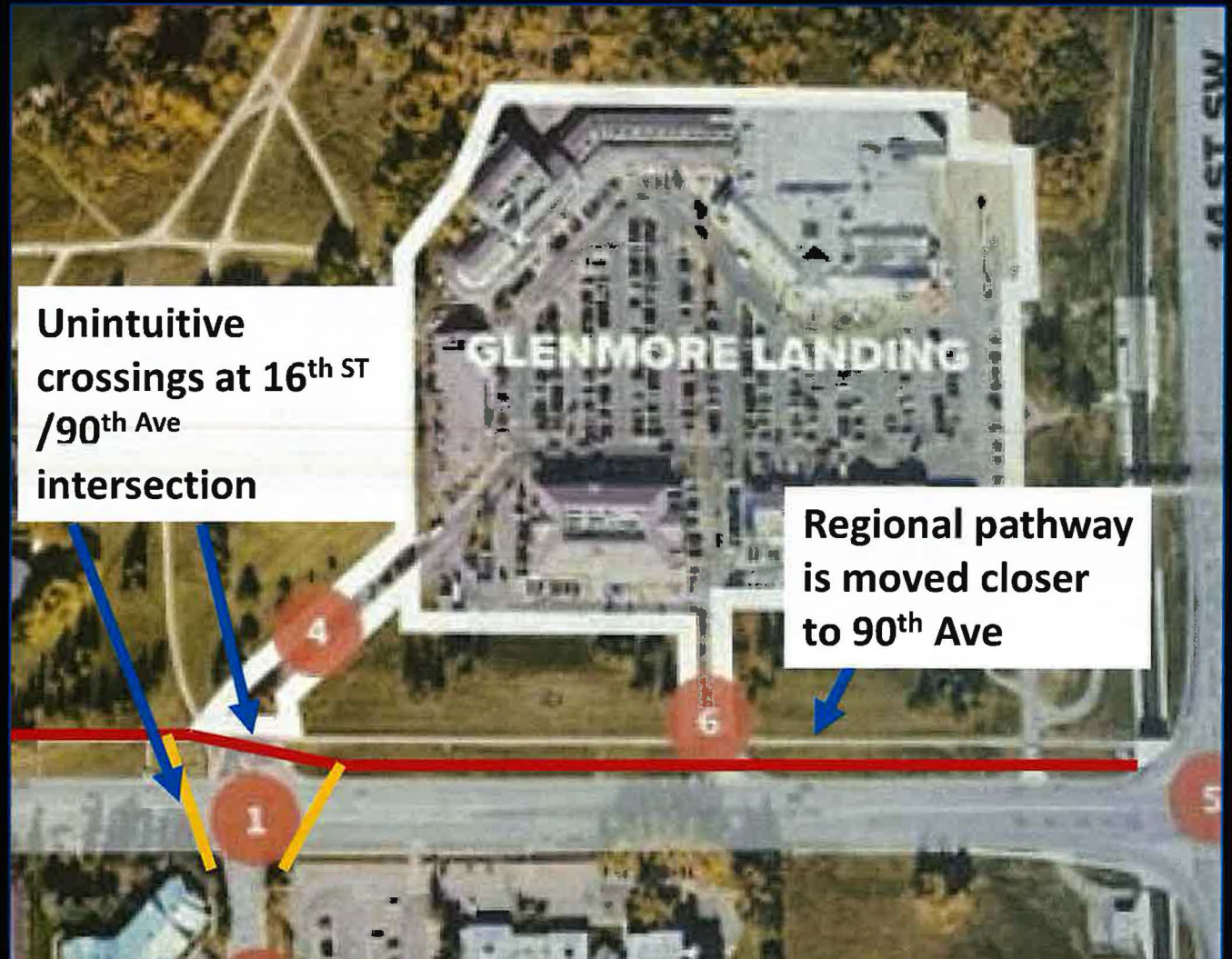
Roadway Improvements Proposed by RioCan

1. Changes to nearby intersection traffic light timing.
2. A change in the driving lane configurations at the 16th Street SW and 90th Avenue SW intersection (i.e., main access to Glenmore Landing)
3. New traffic lights to manage traffic flow.
4. Improving the 16th St SW access to Glenmore Landing
5. Increasing turning lane capacities.
6. Improvements to safety for pedestrians, bicycles and vehicles.



RioCan's proposed Changes to 16th st/90th Ave intersection:

- Create unintuitive pedestrian crossings over a congested intersection.
- Are significantly less safe for pedestrians and cyclists



Consider the unique needs of the Elderly who frequent this intersection:

Three Seniors Facilities Adjacent 90th Ave SW 16th St SW Intersection

- Bertha Gold Jewish Seniors Residence
- Chateau Renoir
- Beverly Centre

Many elderly folks with impeded mobility cross at this intersection daily to access basic amenities including: coffee at McDonalds, banking, haircuts, dentists, doctors' offices and lab work.

With walkers and wheelchairs, these citizens require more time and patience for crossing.



Moving the Regional Pathway closer to traffic

The proposed redevelopment will move the regional pathway closer to 90th Ave SW resulting in:

- Long and unintuitive diagonal crossing for cyclists and pedestrians over 90th Ave SW and 16thSt SW (at the traffic 'choke point')
- Cyclists are moved significantly closer to a busier more congested roadway
- Louder and less safe for cyclists and pedestrians



Glenmore Landing Redevelopment is not the only change increasing traffic at the 90thAve/16thSt intersection

Right across the street from Glenmore Landing,
the City of Calgary has already rezoned the JCC
for Redevelopment

Rezoning approval includes:

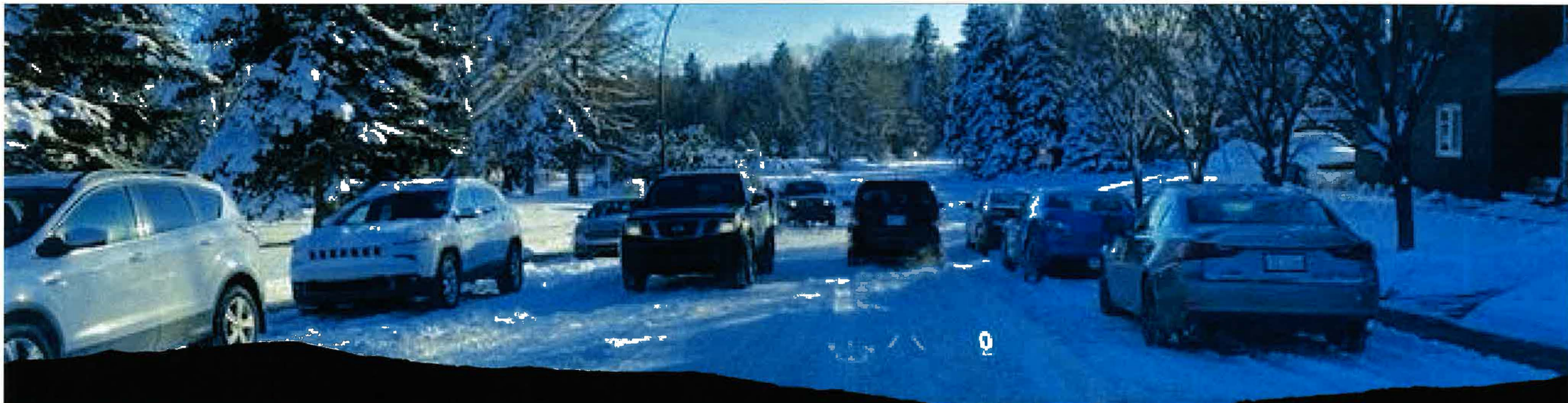
- School for up to 440 students
- Synagogue
- Flexible Community space for up to 500
- Expanded daycare
- 2 New Seniors Facilities

Consider the safety hazard as children rushing
to school and morning rush-hour overlap.

Calgary Jewish Community Campus Rendering

Potential as of June 2023





Proposed roadway changes to 16th St are less safe in Playground Zone

- The proposed changes to 16th Ave SW include removing parking on both sides of roadway to increase north-bound roadway to two lanes.
- This increases traffic to 3 lanes on roadway in front of JCC, through a playground zone.

So they will be removing street parking in front of a playground allowing more short cutting traffic, increased U-Turns at the intersection on 92 Ave, detract safety and livability of the street

- Note: this playground is very busy during summer months when JCC hosts camps.

The proposed towers will shade 14th St SW and the pedestrian walkway

- Shaded areas on roadways create problem areas for black ice.

Black ice is a thin, transparent film of ice covering a portion of the road. **Black ice** is a common culprit for some of the worst **car accidents** as **vehicles spin out of control**.

RioCan's own shadow studies indicate large parts of 14th St will be shaded from 2pm -4pm from September to March. This puts lives at risk during evening rush hour throughout our winter months.

The pedestrian walkway over 14th St will also be hazardously effected by black ice at these times. Expect serious slips and falls to increase as both the access ramp and stairs will be covered in black ice

SHADOW STUDIES / DECEMBER

10:00 AM



12:00 PM



1:00 PM



4:00 PM



GLENMORE LANDING

The Redevelopment of Glenmore Landing and the Proposed Roadway Changes poses significant safety concerns for pedestrian and vehicular safety at these locations:

90 Ave SW/16th St SW intersections

14th St SW (roadway and pedestrian overpass)

16th St SW

Any high-density redevelopment at Glenmore Landing specifically is fundamentally flawed and inappropriate based on these unique safety issues due to the pre-existing physical constraints

