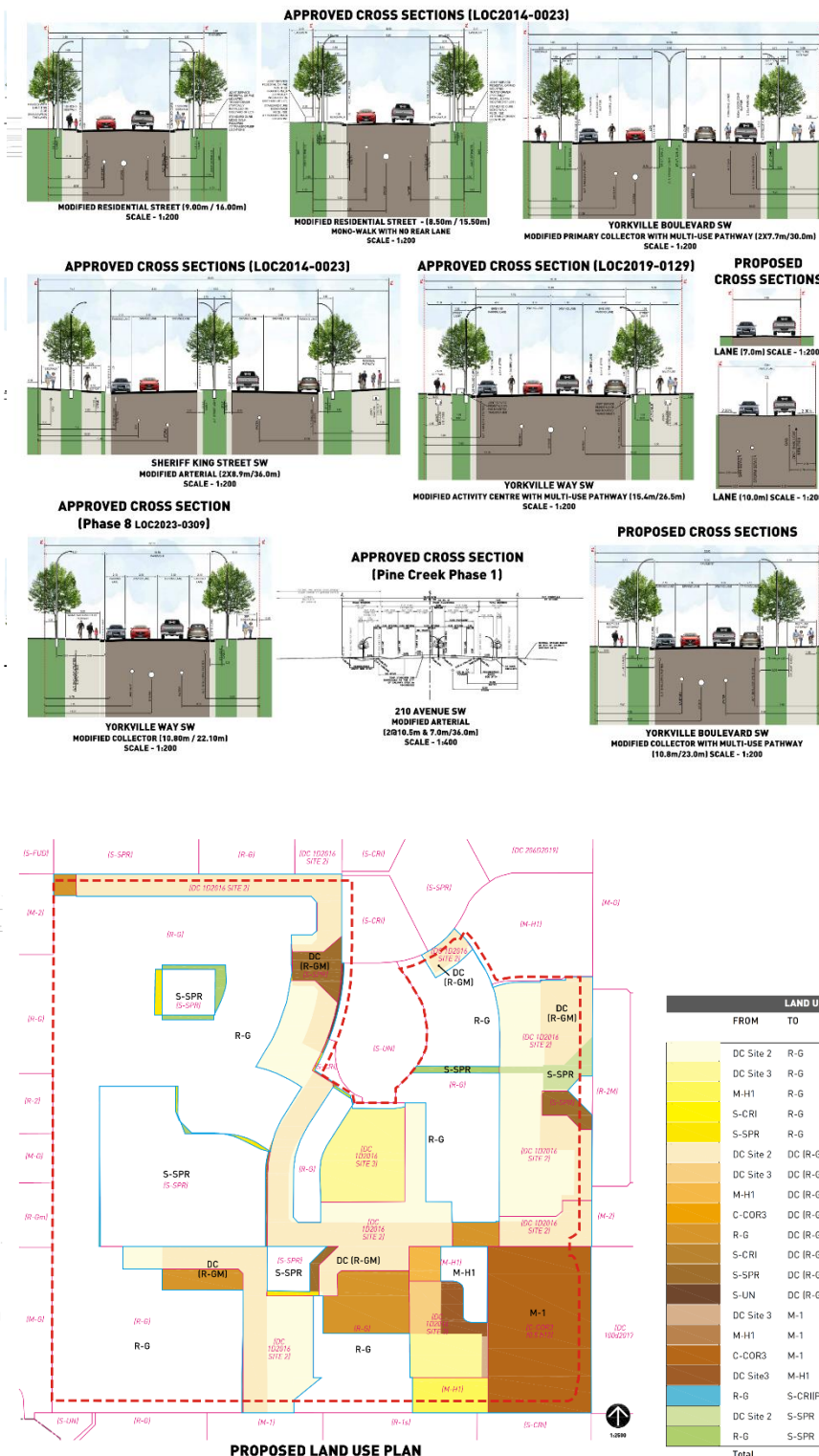
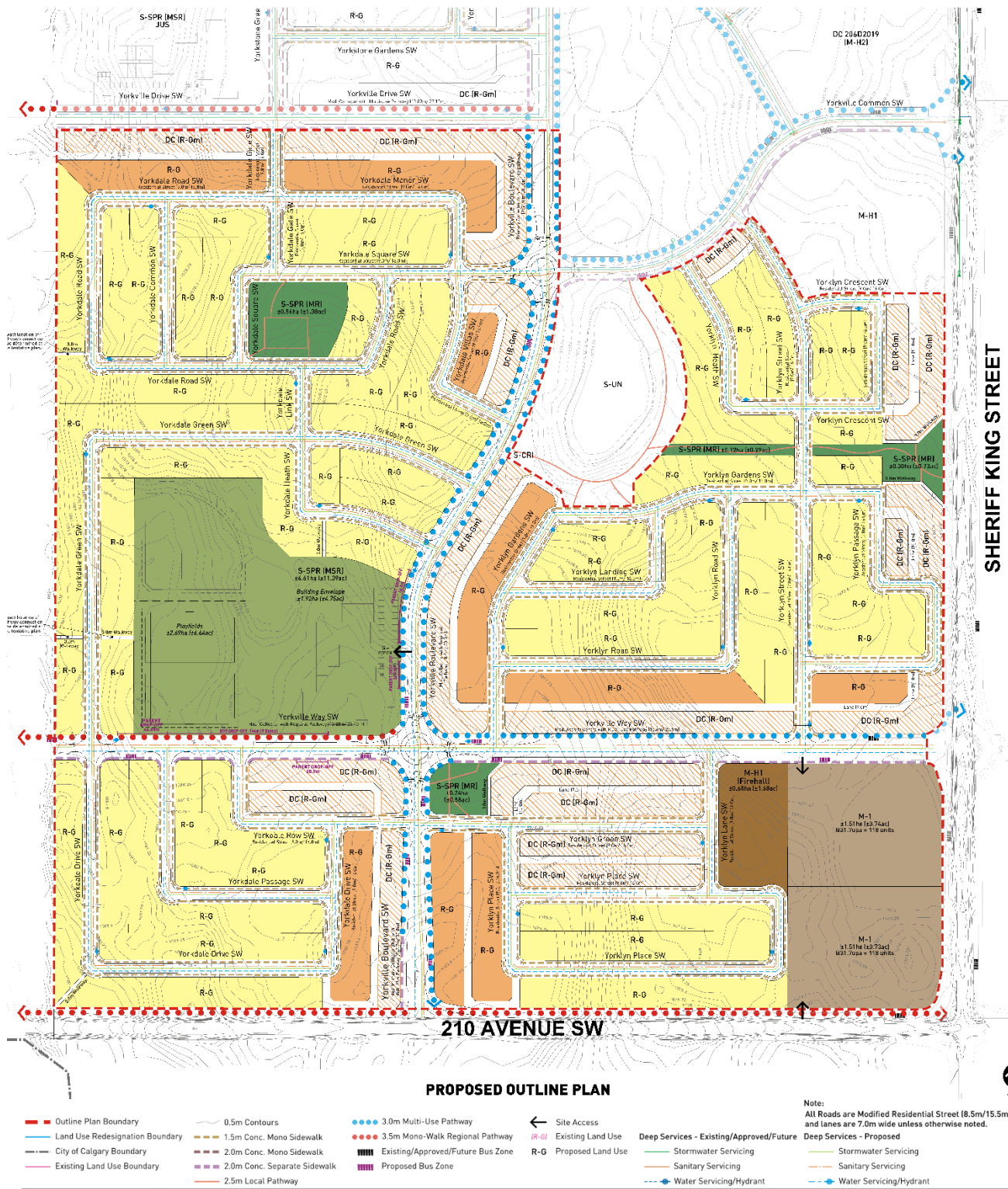


Proposed Outline Plan

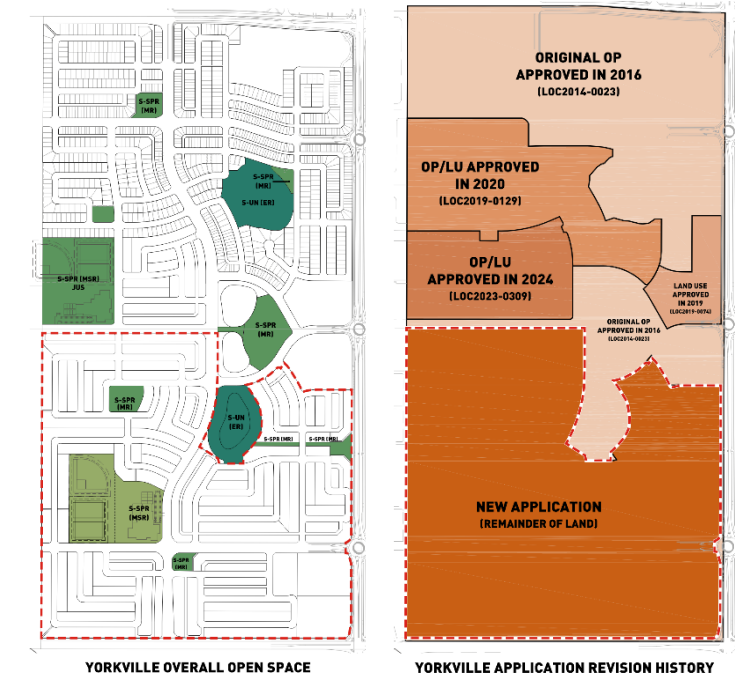
Calgary Planning Commission is the Approving Authority for the Outline Plan. Attachment for Council's reference only.



SOUTH YORKVILLE OUTLINE PLAN STATISTICS

		Hectares (±)	Acres (±)	% of GDA		
Total Area		55.73	137.72	100.0%		
Gross Developable Area (GDA)		55.73	137.72	100.0%		
Land Use	Lot Width (m) / units per acre (upa)	Frontage (m)	Hectares (±)	Acres (±)	No. of Units	% of GDA
Residential			29.79	73.62		53.5%
R-G	7.40	1,402.51	23.86	58.97	190	
Anticipated number of laned lots based on 7.4m lot width						
Anticipated number of laness lots based on 12.2m lot width						
DC (R-Gm)	6.00	8,860.05	5.93	14.65	1477	
Maximum number of lots based on 4.5m lot width						
Residential - Low Density Mixed Housing District						
Anticipated number of lots based on 6.05m lot width						
Maximum number of lots based on 5.0m lot width						
Total Frontage		11,704.34				
Multi-Family			3.70	9.15		6.4%
M-1	31.7 upa		3.02	7.47	236	
Anticipated number of units based on 31.7 upa (Townhomes)						
Multi-Residential - At Grade Housing						
Anticipated number of units based on 31.7 upa (Townhomes)						
Multi-Residential - High Density Low Rise (Firehall)						
Total Units					1505	
Anticipated						
Maximum						
Density						
Anticipated						
Maximum						
Public Service			0.02	0.05		0.0%
S-CR(PUL)			0.02	0.05		
Special Purpose - City and Regional Infrastructure						
Open Space			5.82	14.37		10.4%
S-SPR(MR)			1.21	2.98		
Special Purpose - School, Park and Community Reserve**						
S-SPR(MSR)			4.61	11.39		
Special Purpose - School, Park and Community Reserve**						
Roadways & Lanes			16.40	40.53		29.4%

**Note: 10% S-SPR (MR/MSR) provided for the whole of Yorkville as per Yorkville Overall Open Space Plan & Statistics



YORKVILLE OVERALL OPEN SPACE STATISTICS

		Hectares (±)	Acres (±)	% of GDA
Total Area		128.97	318.69	
less				
S-UN(ER)	Special Purpose - Urban Nature	4.63	11.44	
Gross Developable Area (GDA)		124.34	307.25	
		Hectares (±)	Acres (±)	% of GDA
Open Space		12.44	30.74	10.00%
North Yorkville				
S-SPR(MR)	Special Purpose - School, Park and Community	2.49	6.16	
S-SPR(MSR)	Special Purpose - School, Park and Community	4.13	10.21	
South Yorkville				
S-SPR(MR)	Special Purpose - School, Park and Community	1.21	2.98	
S-SPR(MSR)	Special Purpose - School, Park and Community	4.61	11.39	