

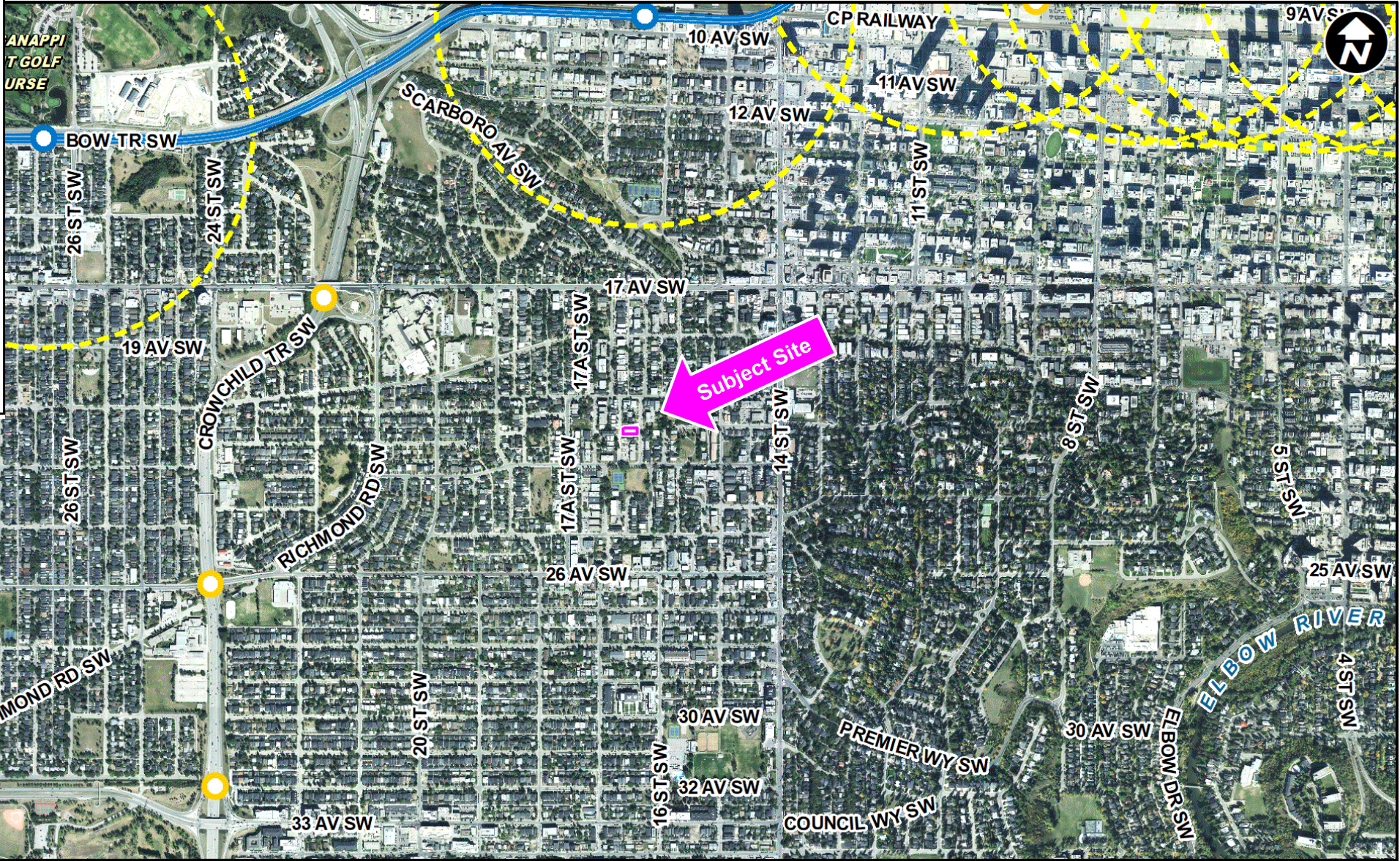
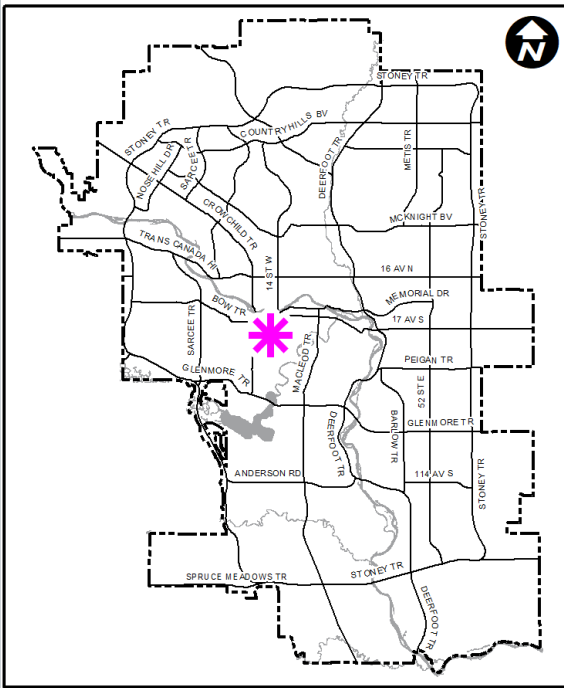
LOC2024-0111 / CPC2024-0991 Land Use Amendment

December 3, 2024

Calgary Planning Commission's Recommendation:

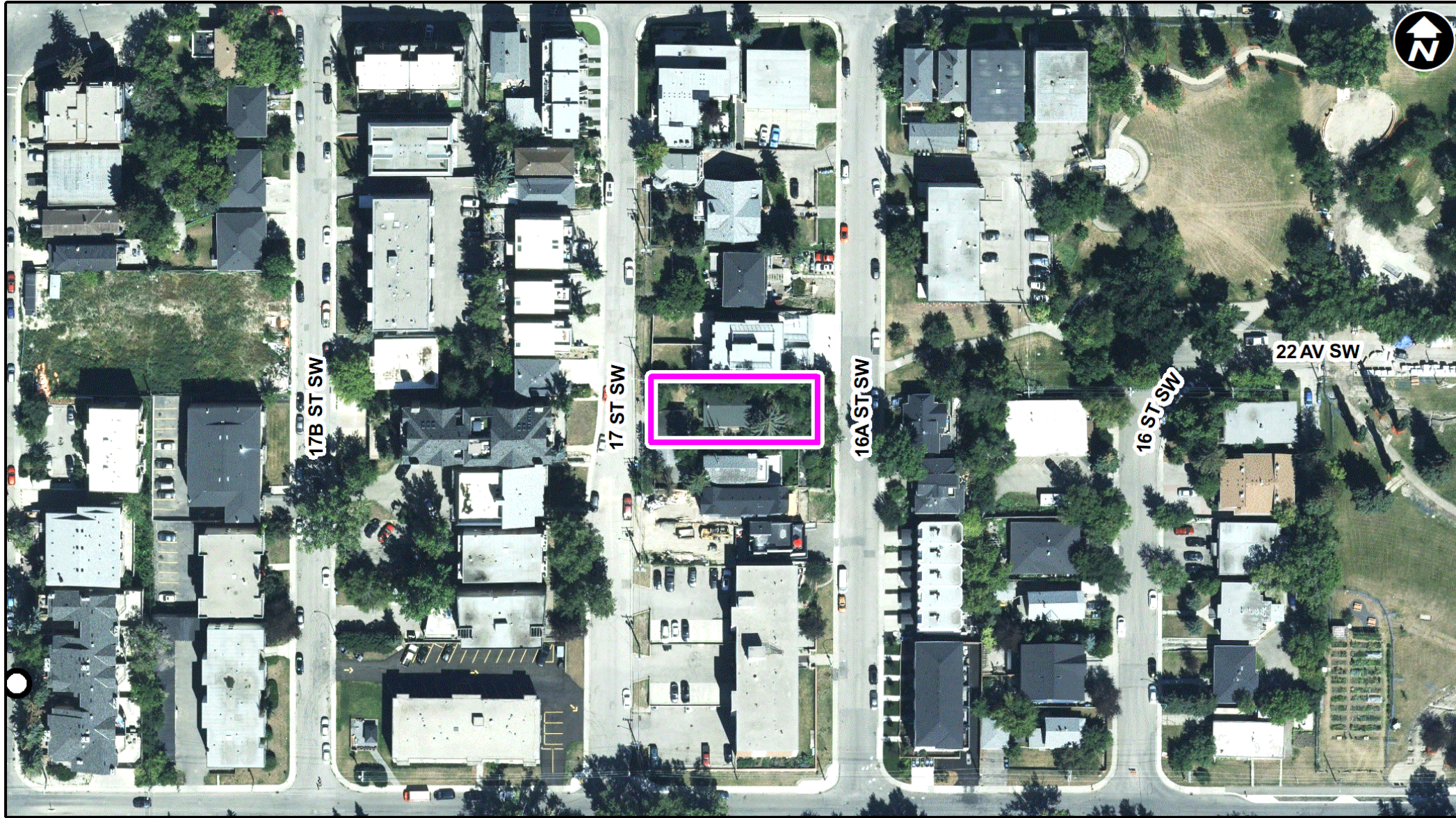
That Council:

1. Give three readings to **Proposed Bylaw 88P2024** for the amendment to the Bankview Area Redevelopment Plan;
2. Give three readings to **Proposed Bylaw 289D2024** for the redesignation of 0.06 hectares \pm (0.16 acres \pm) located at 2303 – 16A Street SW (Plan 9210947, Block F, Lot 1A) from Multi Residential – Contextual Grade-Oriented (M-CGd72) District to Multi-Residential – Contextual Grade-Oriented (M-CG) District.



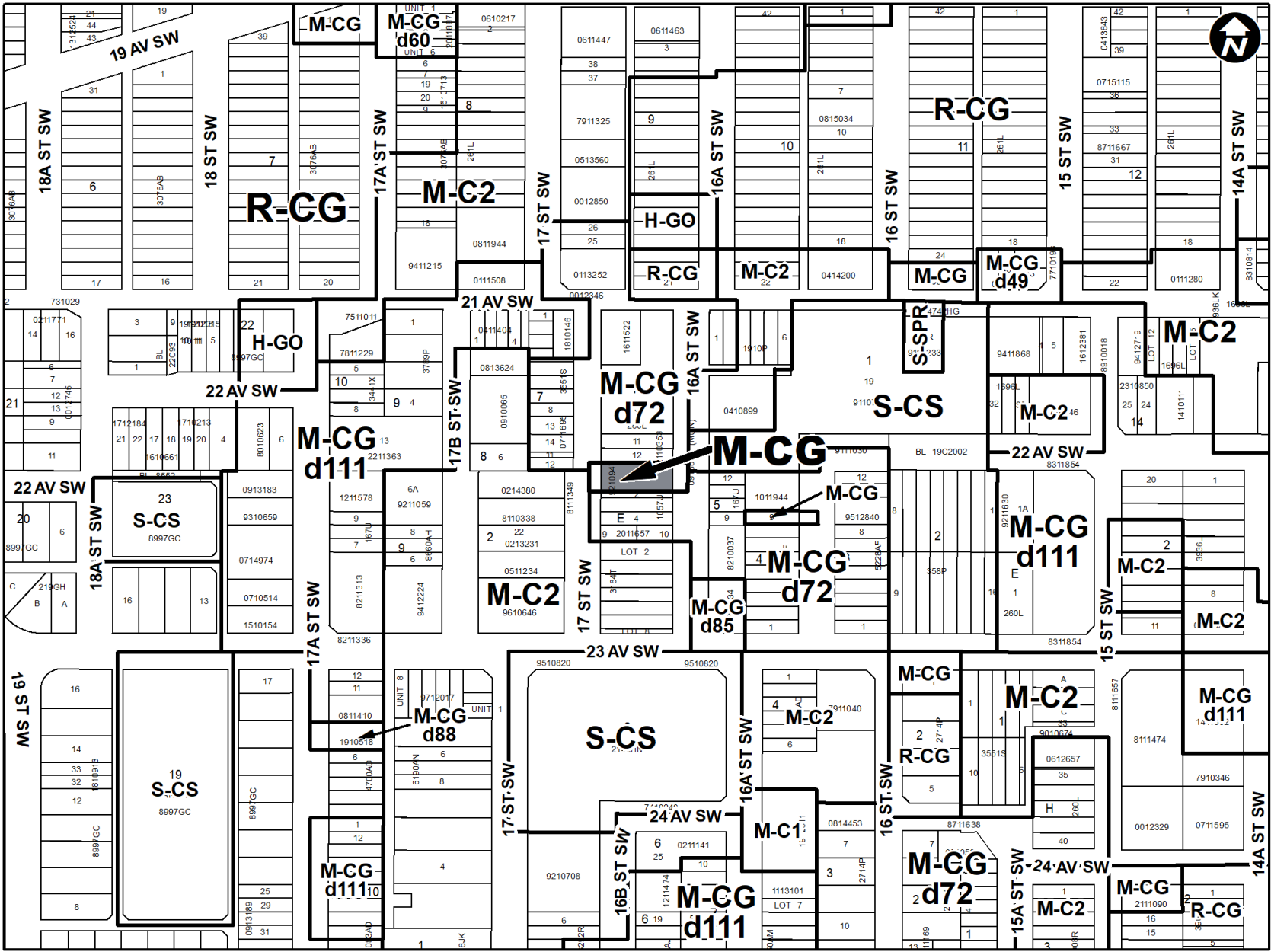
LEGEND

- 600m buffer from LRT station
- LRT Stations**
- Blue
- Downtown
- Red
- Green (Future)
- LRT Line**
- Blue
- Blue/Red
- Red
- Max BRT Stops**
- Orange
- Purple
- Teal
- Yellow



Parcel Size:

0.06 ha
15m x 40m



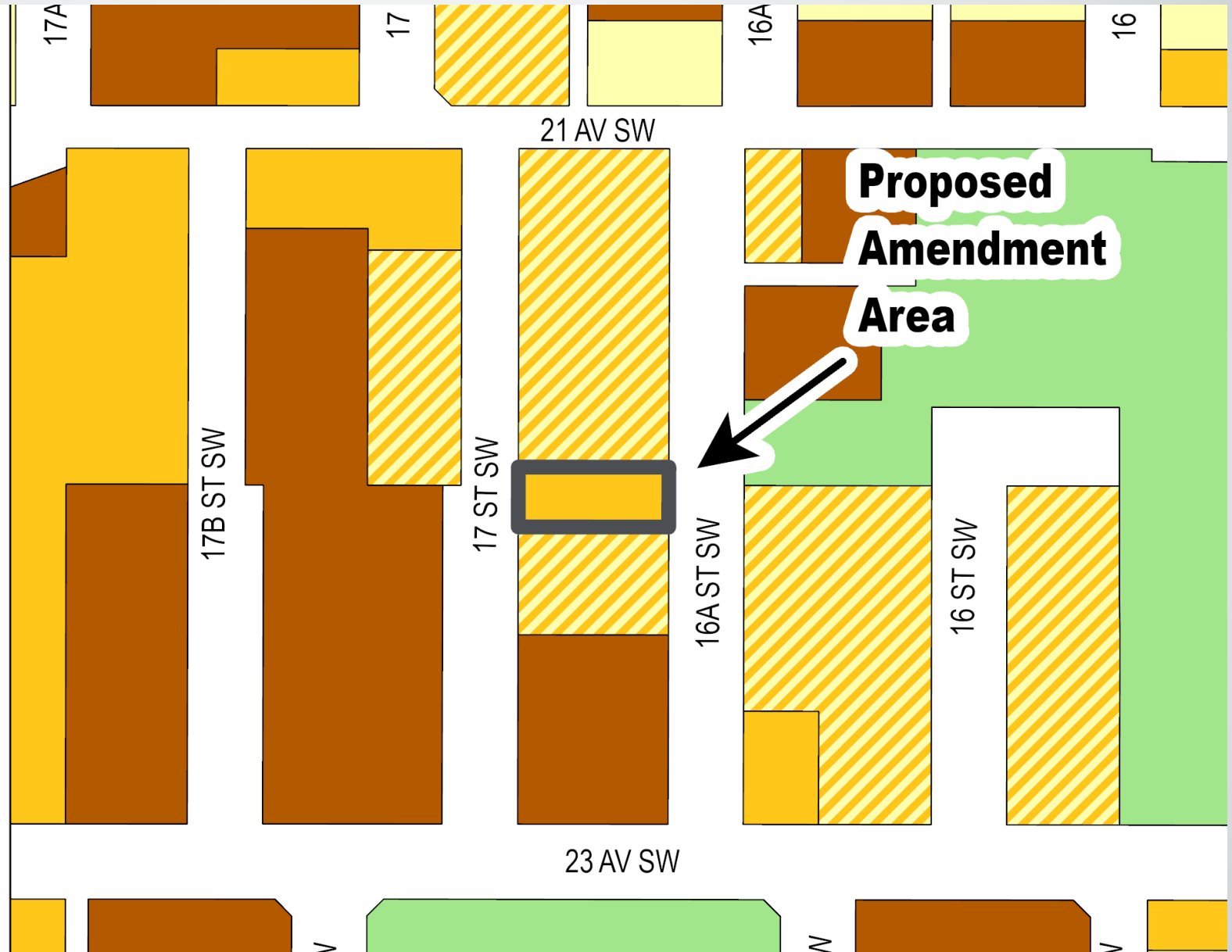
Proposed M-CG District:

- Maximum density = 111 uph (7 units)

Land Use Policy

Legend

- Conservation
- Conservation and Infill
- Medium Low Density
- Medium Density
- Park School and Recreation



Calgary Planning Commission's Recommendation:

That Council:

1. Give three readings to **Proposed Bylaw 88P2024** for the amendment to the Bankview Area Redevelopment Plan;
2. Give three readings to **Proposed Bylaw 289D2024** for the redesignation of 0.06 hectares \pm (0.16 acres \pm) located at 2303 – 16A Street SW (Plan 9210947, Block F, Lot 1A) from Multi Residential – Contextual Grade-Oriented (M-CGd72) District to Multi-Residential – Contextual Grade-Oriented (M-CG) District.

Supplementary Slides



