

## ARTS COMMONS TRANSFORMATION - PHASE 01 - EXPANSION

### DRAWINGS

#### ARCHITECTURE

A-0000.0	COVER PAGE - R01
A-0100.0	CODE & BYLAW ANALYSIS - GENERAL NOTES - R01
A-1310.0	WINDOW SCHEDULE - R01
A-1320.0	DOOR SCHEDULE - R01
A-1400.0	MATERIALS - R01
A-1450.0	EQUIPMENT
A-1500.0	SITE PHOTOS
A-1510.0	SITE PHOTOS
A-1520.0	SITE PHOTOS
A-1560.0	SHADOW ANALYSIS - R01
A-1600.0	RENDERED PERSPECTIVE FROM SOUTH EAST - R01
A-1610.0	AERIAL RENDERED PERSPECTIVE FROM SOUTH EAST - R01
A-1620.0	RENDERED PERSPECTIVE FROM ENTRANCE TO LOBBY - R01
A-1630.0	RENDERED PERSPECTIVE OF GATHERING CIRCLE + FEATURE STAIR - R01
A-1640.0	RENDERED PERSPECTIVE OF LARGE HALL IN RAKED CONFIGURATON - R01
A-1650.0	RENDERED PERSPECTIVE OF LARGE HALL IN FLAT FLOOR CONFIGURATION - R01
A-1660.0	ISOMETRIC EXTERIOR VIEWS - R01
A-2000.0	CONTEXT PLAN - R01
A-2100.0	EXISTING SITE PLAN - R01
A-2110.0	EXISTING PUBLIC TREE INVENTORY PLAN - R01
A-2120.0	PROPOSED SITE PLAN - R01
A-2400.0	LOWER LEVEL PLAN - R01
A-2410.0	GROUND FLOOR PLAN - R01
A-2420.0	LEVEL 02 PLAN - R01
A-2430.0	LEVEL 03 PLAN - R01
A-2440.0	LEVEL 04 PLAN - R01
A-2450.0	ROOF PLAN - R01
A-3000.0	SECTIONS - R01
A-3010.0	SECTIONS - R01
A-4000.0	ELEVATIONS - R01
A-4010.0	ELEVATIONS - R01
A-5000.0	ENLARGED PLAN - SWEEP PATHS - LOADING DOCK ONE - R01 NEW
A-5001.0	ENLARGED PLAN - SWEEP PATHS - LOADING DOCK TWO - R01 NEW
A-5002.0	ENLARGED PLAN - SWEEP PATHS - LOADING DOCK THREE - R01 NEW
A-5003.0	ENLARGED PLAN - SWEEP PATHS - WASTE AND RECYCLING - R01 NEW
A-5010.0	ENLARGED PLAN AND SECTION - LOADING DOCK - R01
A-5050.0	ENLARGED PLAN - WASTE AND RECYLING - R01
A-9000.0	LIMITING DISTANCE - R01
A-9010.0	ENLARGED PLAN - FIRE ACCESS - R01 NEW
	SHEET COUNT: 39

### CONSULTANTS

#### ARCHITECTURE

**HINDLE ARCHITECTS**  
SUITE 510, BURNS BUILDING  
237 8 AVENUE SE  
CALGARY, ALBERTA  
T2P 2M5  
ROB MACHIDA  
ASSOCIATE  
403 971 4833  
rob@hindle-architects.com

#### KPMB ARCHITECTS

SUITE 1200, 351 KING STREET E  
TORONTO, ONTARIO  
M5A 0L6  
GRAHAM BAXTER  
SENIOR ASSOCIATE  
416 977 5104  
gbaxter@kpmbarchitects.com

#### TAWAW ARCHITECTURE COLLECTIVE INC.

SUITE 203, 1218 9 AVENUE SE  
CALGARY, ALBERTA  
T2G 0T1  
ADDIE SUCHORAB  
INTEGRATED DESIGN DIRECTOR  
825 431 0294  
as@tawarc.com

#### CIVIL

##### AECOM CANADA LTD.

SUITE 300, 48 QUARRY PARK BOULEVARD SE  
CALGARY, ALBERTA  
T2C 5P2  
MICHAEL MAGNAN  
SOCIAL INFRASTRUCTURE MARKET SECTOR LEAD  
403 254 3301  
Michael.Magnan@aecom.com

#### STRUCTURAL

##### ENTUITIVE

SUITE 1610, 150 9 AVENUE SW  
CALGARY, ALBERTA  
T2P 3H9  
GREG RIEWE  
SENIOR ASSOCIATE  
403 879 1270  
greg.riewe@entuitive.com

#### MECHANICAL

##### ALTIERI SEBOR WEIBER LLC

31 KNIGHT STREET  
NORWALK, CONNECTICUT  
06851  
KEN WIEBER  
PRINCIPAL  
203 866 5538  
jkw2@altierisw.com

#### MECHANICAL

##### REINBOLD ENGINEERING

SUITE 110, 5970 CENTRE STREET SW  
CALGARY, ALBERTA  
T2H 0C1  
DOUG REINBOLD  
SENIOR PRINCIPAL  
403 509 1039  
DReinbold@reg-eng.com

#### ELECTRICAL

##### CROSSEY ENGINEERING

2255 SHEPPARD AVENUE E  
NORTH YORK, ONTARIO  
M2J 4Y1  
YINLIN LIU  
ASSOCIATE PRINCIPAL  
416 497 3111  
yilin.liu@cet.ca

#### ELECTRICAL

##### DESIGN CORE ENGINEERING LTD.

SUITE 100, 4723 1 STREET SW  
CALGARY, ALBERTA  
T2G 4Y8  
BRIAN CALVERLEY  
PARTNER  
403 269 2125  
bcalverley@designcore.ca

#### TRANSPORTATION

##### BUNT & ASSOCIATES ENGINEERING

SUITE 113, 334 11 AVENUE SE  
CALGARY, ALBERTA  
T2G 0Y2  
GLEN PARDOE  
PRINCIPAL LEAD, BD & COMMUNICATIONS  
587 349 7569  
gpardoe@bunteng.com

### APPLICATION

#### PROJECT ADDRESS

**ARTS COMMONS EXPANSION**  
204 8 AVENUE SE  
CALGARY, ALBERTA  
T2P 2M5

LOT 1-38  
BLOCK 52  
PLAN A

#### APPLICANT

##### HINDLE ARCHITECTS

SUITE 510, BURNS BUILDING  
237 8 AVENUE SE  
CALGARY, ALBERTA  
T2G 5C3

ROB MACHIDA  
ASSOCIATE  
403 971 4833  
rob@hindle-architects.com

#### CONSTRUCTION MANAGER

##### ELLIS DON

SUITE 310, 140 QUARRY PARK BOULEVARD SE  
CALGARY, ALBERTA  
T2C 3E3

DEREK LUPPAL  
PROJECT DIRECTOR  
403 259 6627  
dluppall@ellisdon.com

#### PROJECT MANAGER

##### COLLIERS

900 ROYAL BANK BUILDING, 335 8 AVENUE SW  
CALGARY, ALBERTA  
T2P 1C9

CAROLYN HADDOCK  
PROJECT DIRECTOR  
403 971 3870  
carolyn.haddock@colliersprojectleaders.com

#### OWNER

##### CALGARY MUNICIPAL LAND CORPORATION

430 8 AVENUE SE  
CALGARY, ALBERTA  
T2G 0L7

GEORGETTE MCGRATH-JUKIC  
DIRECTOR, SPECIAL PROJECTS  
403 719 0300  
gmjukic@calgarymlc.ca

#### ISSUED TO

##### THE CITY OF CALGARY

DEVELOPMENT + BUILDING APPROVALS  
P.O. BOX 2100 STATION M  
800 MACLEOD TRAIL SE  
CALGARY, ALBERTA  
T2P 2M5  
403 268 5311









EQUIPMENT CUT SHEETS

**Supra** TRAC-Vault BT Smart with TRAC-LiD BTS Data Sheet

**TRAC-Vault BT Smart**  
TRACcess® heavy-duty vault with wireless access, stress keys, access cards, and keyfobs.

**Overview**  
TRAC-Vault BT Smart is a heavy-duty vault with wireless access, stress keys, access cards, and keyfobs. It is designed for high-traffic areas and provides secure access to sensitive information.

**Features**  
• Wireless access  
• Stress keys  
• Access cards  
• Keyfobs

**Specifications**  
• Dimensions: 18" x 18" x 18"  
• Weight: 15 lbs  
• Material: 304 Stainless Steel

**Installation**  
• Mounting: Wall or floor  
• Power: 12V DC  
• Network: PoE or PoE+

**Warranty**  
• 3-year warranty

**Supra** TRAC-LiD BTS Data Sheet

**TRAC-LiD BTS**  
LiDAR-based access control system for secure entry.

**Overview**  
TRAC-LiD BTS is a LiDAR-based access control system that provides secure entry to sensitive areas. It uses LiDAR technology to detect and track individuals, ensuring only authorized personnel can enter.

**Features**  
• LiDAR-based access control  
• Secure entry  
• Integration with TRAC-Vault BT Smart

**Specifications**  
• Dimensions: 12" x 12" x 12"  
• Weight: 8 lbs  
• Material: 304 Stainless Steel

**Installation**  
• Mounting: Wall  
• Power: 12V DC  
• Network: PoE

**Warranty**  
• 3-year warranty

**GROUND CONTROL** Inverted U - Hoop Runner - HR101

**Overview**  
Inverted U - Hoop Runner - HR101 is a heavy-duty runner for industrial applications. It is designed for high-traffic areas and provides a smooth, durable surface.

**Specifications**  
• Dimensions: 24.50" x 1.90" x 0.50"  
• Weight: 15 lbs  
• Material: 304 Stainless Steel

**Installation**  
• Mounting: Floor  
• Power: 12V DC

**Warranty**  
• 3-year warranty

**GROUND CONTROL** Offset® Vertical Bike Rack

**Overview**  
Offset® Vertical Bike Rack is a heavy-duty bike rack for industrial applications. It is designed for high-traffic areas and provides a secure, durable storage solution for bicycles.

**Specifications**  
• Dimensions: 24" x 18" x 18"  
• Weight: 15 lbs  
• Material: 304 Stainless Steel

**Installation**  
• Mounting: Wall  
• Power: 12V DC

**Warranty**  
• 3-year warranty

**EQUIPMENT LEGEND**

SC01	SUPRA - TRACCESS HEAVY DUTY VAULT
SC02	TRAC-LID BTS
SC03	GROUND CONTROL SYSTEMS - INVERTED U - HOOP RUNNER
SC04	GROUND CONTROL SYSTEMS - OFFSET VERTICAL BIKE RACK
SC05	POTTER - SH-120 WALL MOUNT WEATHER SELECT-ASTROBOMB
SC06	MIRCOM - WELLIGHT FIRE CONTROL UNIT & AGENT RELEASE CONTROL UNIT - FX-5500 SERIES
SC07	MIRCOM - UNTOUCHABLE VIP FL3/3 SELF-CONTAINED COMPACTOR

**NOTES:**  
1. ALL DIMENSIONS ARE IN INCHES UNLESS OTHERWISE SPECIFIED.  
2. ALL DIMENSIONS ARE TO FACE UNLESS OTHERWISE SPECIFIED.  
3. ALL DIMENSIONS ARE TO CENTER UNLESS OTHERWISE SPECIFIED.  
4. ALL DIMENSIONS ARE TO CENTER UNLESS OTHERWISE SPECIFIED.  
5. ALL DIMENSIONS ARE TO CENTER UNLESS OTHERWISE SPECIFIED.  
6. ALL DIMENSIONS ARE TO CENTER UNLESS OTHERWISE SPECIFIED.  
7. ALL DIMENSIONS ARE TO CENTER UNLESS OTHERWISE SPECIFIED.  
8. ALL DIMENSIONS ARE TO CENTER UNLESS OTHERWISE SPECIFIED.  
9. ALL DIMENSIONS ARE TO CENTER UNLESS OTHERWISE SPECIFIED.  
10. ALL DIMENSIONS ARE TO CENTER UNLESS OTHERWISE SPECIFIED.

**POTTER** SH-120 SERIES WALL MOUNT WEATHER PROOF SELECT-ASTROBOMB

**Overview**  
SH-120 Series is a weather-proof select-a-strobe siren for fire alarm systems. It is designed for outdoor use and provides a clear, audible alarm.

**Specifications**  
• Dimensions: 12" x 12" x 12"  
• Weight: 8 lbs  
• Material: 304 Stainless Steel

**Installation**  
• Mounting: Wall  
• Power: 12V DC

**Warranty**  
• 3-year warranty

**POTTER** SH-120 SERIES WALL MOUNT WEATHER PROOF SELECT-ASTROBOMB

**Overview**  
SH-120 Series is a weather-proof select-a-strobe siren for fire alarm systems. It is designed for outdoor use and provides a clear, audible alarm.

**Specifications**  
• Dimensions: 12" x 12" x 12"  
• Weight: 8 lbs  
• Material: 304 Stainless Steel

**Installation**  
• Mounting: Wall  
• Power: 12V DC

**Warranty**  
• 3-year warranty

**Mircom** WELLIGHT FIRE CONTROL UNIT & AGENT RELEASE CONTROL UNIT - FX-5500 SERIES

**Overview**  
FX-5500 Series is a fire control unit and agent release control unit for fire alarm systems. It is designed for high-traffic areas and provides a secure, durable storage solution for fire alarm equipment.

**Specifications**  
• Dimensions: 24" x 18" x 18"  
• Weight: 15 lbs  
• Material: 304 Stainless Steel

**Installation**  
• Mounting: Wall  
• Power: 12V DC

**Warranty**  
• 3-year warranty

**Mircom** WELLIGHT FIRE CONTROL UNIT & AGENT RELEASE CONTROL UNIT - FX-5500 SERIES

**Overview**  
FX-5500 Series is a fire control unit and agent release control unit for fire alarm systems. It is designed for high-traffic areas and provides a secure, durable storage solution for fire alarm equipment.

**Specifications**  
• Dimensions: 24" x 18" x 18"  
• Weight: 15 lbs  
• Material: 304 Stainless Steel

**Installation**  
• Mounting: Wall  
• Power: 12V DC

**Warranty**  
• 3-year warranty

**RAMJET** UNTOUCHABLE VIP™ (Vert-I-Pack) Compactor/Container

**Overview**  
UNTOUCHABLE VIP™ (Vert-I-Pack) Compactor/Container is a heavy-duty compactor for industrial applications. It is designed for high-traffic areas and provides a secure, durable storage solution for industrial waste.

**Specifications**  
• Dimensions: 48" x 36" x 48"  
• Weight: 150 lbs  
• Material: 304 Stainless Steel

**Installation**  
• Mounting: Floor  
• Power: 12V DC

**Warranty**  
• 3-year warranty

**RAMJET** UNTOUCHABLE VIP™ (Vert-I-Pack) Compactor/Container

**Overview**  
UNTOUCHABLE VIP™ (Vert-I-Pack) Compactor/Container is a heavy-duty compactor for industrial applications. It is designed for high-traffic areas and provides a secure, durable storage solution for industrial waste.

**Specifications**  
• Dimensions: 48" x 36" x 48"  
• Weight: 150 lbs  
• Material: 304 Stainless Steel

**Installation**  
• Mounting: Floor  
• Power: 12V DC

**Warranty**  
• 3-year warranty

**RAMJET** UNTOUCHABLE VIP™ (Vert-I-Pack) Compactor/Container

**Overview**  
UNTOUCHABLE VIP™ (Vert-I-Pack) Compactor/Container is a heavy-duty compactor for industrial applications. It is designed for high-traffic areas and provides a secure, durable storage solution for industrial waste.

**Specifications**  
• Dimensions: 48" x 36" x 48"  
• Weight: 150 lbs  
• Material: 304 Stainless Steel

**Installation**  
• Mounting: Floor  
• Power: 12V DC

**Warranty**  
• 3-year warranty

**RAMJET** UNTOUCHABLE VIP™ (Vert-I-Pack) Compactor/Container

**Overview**  
UNTOUCHABLE VIP™ (Vert-I-Pack) Compactor/Container is a heavy-duty compactor for industrial applications. It is designed for high-traffic areas and provides a secure, durable storage solution for industrial waste.

**Specifications**  
• Dimensions: 48" x 36" x 48"  
• Weight: 150 lbs  
• Material: 304 Stainless Steel

**Installation**  
• Mounting: Floor  
• Power: 12V DC

**Warranty**  
• 3-year warranty

**Table with 2 columns: Equipment ID, Description**

SC01	SUPRA - TRACCESS HEAVY DUTY VAULT
SC02	TRAC-LID BTS
SC03	GROUND CONTROL SYSTEMS - INVERTED U - HOOP RUNNER
SC04	GROUND CONTROL SYSTEMS - OFFSET VERTICAL BIKE RACK
SC05	POTTER - SH-120 WALL MOUNT WEATHER SELECT-ASTROBOMB
SC06	MIRCOM - WELLIGHT FIRE CONTROL UNIT & AGENT RELEASE CONTROL UNIT - FX-5500 SERIES
SC07	MIRCOM - UNTOUCHABLE VIP FL3/3 SELF-CONTAINED COMPACTOR

**K P M B**  
HPMB ARCHITECTS  
SUITE 1200, 261 19TH STREET EAST  
TORONTO, ONTARIO, M5A 1L4  
416-977-5104

**HINDLE ARCHITECTS**  
HINDLE ARCHITECTS  
SUITE 510, 237 9 AVENUE SE  
CALGARY, ALBERTA, T2C 0C3  
403-971-4833

**TAW**  
TAW ARCHITECTURE COLLECTIVE  
SUITE 203, 1218 9 AVENUE SE  
CALGARY, AB T2C 0T1  
825-431-0294

**ACT**  
8 AVENUE SE  
CALGARY, ALBERTA

**EQUIPMENT**

**A-1450.0**









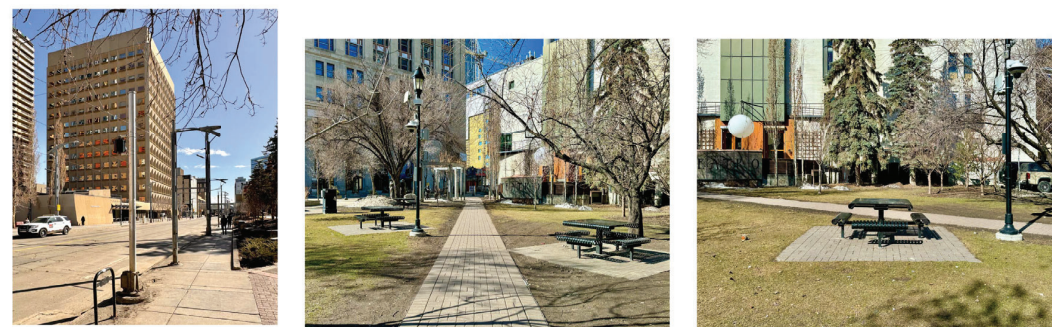
21 SITE PHOTO VIEW OF CURB CUT AT NORTH WEST OF SITE NTS  
 20 SITE PHOTO VIEW OF CATCH BASIN AT NORTH WEST OF SITE NTS  
 19 SITE PHOTO VIEW OF CURB CUT NORTH OF CALLAGHY PUBLIC BUILDING NTS  
 18 SITE PHOTO VIEW OF CURB CUT AT 8 AVENUE SE NTS  
 17 SITE PHOTO VIEW OF CURB CUT AT 8 AVENUE SE NTS  
 16 SITE PHOTO VIEW OF CURB CUT SOUTH OF DOMINION BANK BUILDINGS NTS  
 15 SITE PHOTO VIEW OF CURB CUT AT DOMINION BANK BUILDINGS NORTH LANE NTS



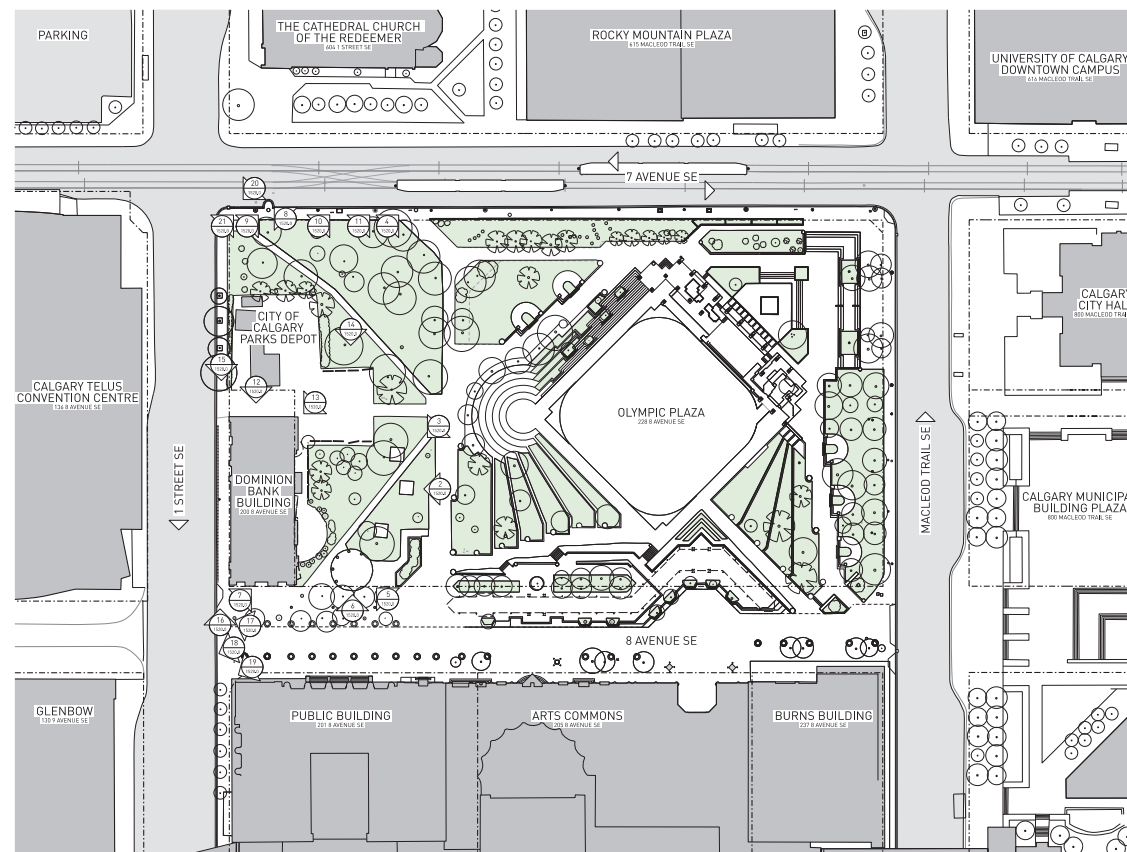
14 SITE PHOTO NORTH VIEW OF PARKING AT DOMINION BANK BUILDING NTS  
 13 SITE PHOTO VIEW OF UTILITY CABINETS ON NORTH EAST OF DOMINION BANK BUILDING NTS  
 12 SITE PHOTO DIRECT VIEW OF DOMINION BANK BUILDING FROM NORTH NTS  
 11 SITE PHOTO VIEW OF LEFT UTILITY BOXES NTS  
 10 SITE PHOTO VIEW OF LEFT UTILITY BOXES NTS  
 9 SITE PHOTO VIEW OF CURB AT LEFT LINE FROM SOUTH WEST NTS  
 8 SITE PHOTO VIEW OF CURB AT LEFT LINE FROM SOUTH EAST NTS



7 SITE PHOTO VIEW OF THE MONUMENT SOUTH OF DOMINION BANK BUILDING NTS  
 6 SITE PHOTO VIEW OF FAMOSO THE MONUMENT FROM SOUTH NTS  
 5 SITE PHOTO VIEW OF FAMOSO THE MONUMENT FROM SOUTH EAST NTS



4 SITE PHOTO VIEW OF OVERHEAD LIT LINES AND SIGNAL ON 8 AVENUE SE NTS  
 3 SITE PHOTO VIEW OF EXISTING PICNIC TABLES FROM NORTH EAST NTS  
 2 SITE PHOTO VIEW OF EXISTING PICNIC TABLE AND SEATING FROM NORTH EAST NTS



1 PHOTO LEGEND KEY PLAN 1:500

CONTRACTOR SHALL BE RESPONSIBLE FOR OBTAINING ALL NECESSARY PERMITS AND APPROVALS FROM THE CITY OF CALGARY AND THE PROVINCE OF ALBERTA. THE CONTRACTOR SHALL BE RESPONSIBLE FOR OBTAINING ALL NECESSARY PERMITS AND APPROVALS FROM THE CITY OF CALGARY AND THE PROVINCE OF ALBERTA. THE CONTRACTOR SHALL BE RESPONSIBLE FOR OBTAINING ALL NECESSARY PERMITS AND APPROVALS FROM THE CITY OF CALGARY AND THE PROVINCE OF ALBERTA.

NO.	DESCRIPTION	DATE
1	ISSUED FOR PERMIT	2024-10-10
2	ISSUED FOR PERMIT	2024-10-10
3	ISSUED FOR PERMIT	2024-10-10
4	ISSUED FOR PERMIT	2024-10-10
5	ISSUED FOR PERMIT	2024-10-10
6	ISSUED FOR PERMIT	2024-10-10
7	ISSUED FOR PERMIT	2024-10-10
8	ISSUED FOR PERMIT	2024-10-10
9	ISSUED FOR PERMIT	2024-10-10
10	ISSUED FOR PERMIT	2024-10-10
11	ISSUED FOR PERMIT	2024-10-10
12	ISSUED FOR PERMIT	2024-10-10
13	ISSUED FOR PERMIT	2024-10-10
14	ISSUED FOR PERMIT	2024-10-10
15	ISSUED FOR PERMIT	2024-10-10
16	ISSUED FOR PERMIT	2024-10-10
17	ISSUED FOR PERMIT	2024-10-10
18	ISSUED FOR PERMIT	2024-10-10
19	ISSUED FOR PERMIT	2024-10-10
20	ISSUED FOR PERMIT	2024-10-10
21	ISSUED FOR PERMIT	2024-10-10

PROJECT NO. 5009  
 SCALE AS NOTED  
 PLOT DATE 2024-10-13

**KP MB**  
 KPMB ARCHITECTS  
 SUITE 100, 361 KING STREET EAST  
 TORONTO, ONTARIO, M5A 1A4  
 416 977 5104

**HINDLE ARCHITECTS**  
 HINDLE ARCHITECTS  
 SUITE 310, 227 8 AVENUE SE  
 CALGARY, ALBERTA, T2G 5C3  
 403 971 4833

**TAW**  
 TAW ARCHITECTURE COLLECTIVE  
 SUITE 100, 1218 9 AVENUE SE  
 CALGARY, AB T2G 0T1  
 403 431 8294

**ACT**  
 ARTS COMMONS TRANSFORMATION  
 PHASE 01 - EXPANSION  
 8 AVENUE SE  
 CALGARY, ALBERTA

PROJECT NO. 5009  
 SCALE AS NOTED  
 PLOT DATE 2024-10-13

A-1520.0





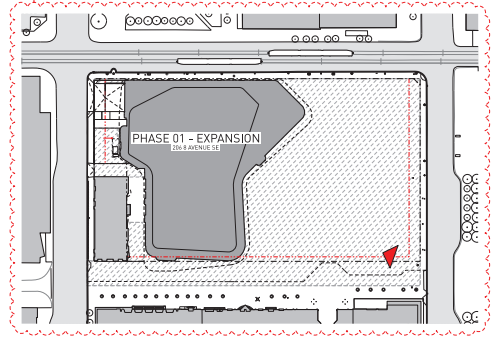


**NOTE**  
 THIS AERIAL RENDERING IS FOR INFORMATIONAL PURPOSES ONLY AND DOES NOT REPRESENT THE FINAL DESIGN OR CONSTRUCTION OF THE PROJECT. THE ARCHITECT ASSUMES NO LIABILITY FOR ANY ERRORS OR OMISSIONS IN THIS RENDERING.

CONTRACTOR SHALL BE RESPONSIBLE FOR OBTAINING ALL NECESSARY PERMITS AND APPROVALS FROM THE CITY OF CALGARY AND THE PROVINCE OF ALBERTA. THE ARCHITECT ASSUMES NO LIABILITY FOR ANY ERRORS OR OMISSIONS IN THIS RENDERING.

NO.	REVISION	DATE

**OLYMPIC PLAZA TRANSFORMATION (OPT) SCOPE**  
 • INTERNAL FINISHES STRATEGY FOR THE PURPOSE OF INTERNAL FINISHES TO BE DETERMINED BY THE ARCHITECT. THE ARCHITECT SHALL PROVIDE A DETAILED FINISHES SCHEDULE TO THE CLIENT AND SHALL BE RESPONSIBLE FOR OBTAINING ALL NECESSARY PERMITS AND APPROVALS FROM THE CITY OF CALGARY AND THE PROVINCE OF ALBERTA.  
 • SET BACKS SHALL BE DETERMINED BY THE ARCHITECT AND SHALL BE SUBJECT TO THE CITY OF CALGARY'S ZONING BY-LAW AND ANY OTHER APPLICABLE REGULATIONS.  
 • ALL EXTERNAL LIGHTING DESIGN TO BE COORDINATED WITH OPT.  
 • ALL EXTERNAL LIGHTING DESIGN TO BE COORDINATED WITH OPT.



**KP MB**  
 KPMB ARCHITECTS  
 SUITE 1200, 351 18th STREET EAST  
 TORONTO, ONTARIO, M5A 0L6  
 416 977 5106

**HINDLE ARCHITECTS**  
 HINDLE ARCHITECTS  
 SUITE 516, 227 8 AVENUE SE  
 CALGARY, ALBERTA, T2G 0C3  
 403 971 4833

**LAW**  
 TAWAN ARCHITECTURE COLLECTIVE  
 SUITE 203, 1718 V AVENUE SE  
 CALGARY, AB T2G 0T1  
 825 431 0294

**ACT**  
 8 AVENUE SE  
 CALGARY, ALBERTA

PROJECT NO. 3000  
 SCALE: 1/8" = 1'-0"  
 PLANT DATE: 2024-06-13

**A-1610.0**  
 AERIAL RENDERED PERSPECTIVE FROM SOUTH EAST



CONTRACTOR'S NOTE: THE ARCHITECT'S RESPONSIBILITY IS TO PROVIDE THE ARCHITECTURAL DESIGN AND CONSTRUCTION DOCUMENTS TO THE CONTRACTOR FOR CONSTRUCTION OF THE PROJECT. THE ARCHITECT IS NOT RESPONSIBLE FOR THE CONTRACTOR'S INTERPRETATION OF THE ARCHITECTURAL DESIGN OR FOR THE CONTRACTOR'S CONSTRUCTION OF THE PROJECT. THE ARCHITECT'S RESPONSIBILITY IS LIMITED TO THE ARCHITECTURAL DESIGN AND CONSTRUCTION DOCUMENTS PROVIDED TO THE CONTRACTOR. THE ARCHITECT'S RESPONSIBILITY IS NOT TO BE HELD RESPONSIBLE FOR THE CONTRACTOR'S CONSTRUCTION OF THE PROJECT. THE ARCHITECT'S RESPONSIBILITY IS LIMITED TO THE ARCHITECTURAL DESIGN AND CONSTRUCTION DOCUMENTS PROVIDED TO THE CONTRACTOR. THE ARCHITECT'S RESPONSIBILITY IS NOT TO BE HELD RESPONSIBLE FOR THE CONTRACTOR'S CONSTRUCTION OF THE PROJECT.

NO.	DESCRIPTION	DATE
1	REVISION	
2	REVISION	
3	REVISION	
4	REVISION	
5	REVISION	
6	REVISION	
7	REVISION	
8	REVISION	
9	REVISION	
10	REVISION	

PROJECT  
**KP**  
**MB**  
KPMB ARCHITECTS  
SUITE 1200, 351 18th STREET EAST  
TORONTO, ONTARIO, M5A 0L6  
416 977 5106

**HINDLE ARCHITECTS**  
HINDLE ARCHITECTS  
SUITE 516, 227 8 AVENUE SE  
CALGARY, ALBERTA, T2C 0C3  
403 971 4833

**TAW**  
TAWAN ARCHITECTURE COLLECTIVE  
SUITE 201, 1218 V AVENUE SE  
CALGARY, AB T2E 0T1  
825 431 0294

CMHC  
**ACT**  
ACT COMMONS TRANSFORMATION  
PHASE 01 - EXPANSION  
8 AVENUE SE  
CALGARY, ALBERTA

PROJECT NO. 3000  
SCALE 1/8" = 1'-0"  
PLOT DATE 2024-06-19

RENDERED PERSPECTIVE  
FROM ENTRANCE TO  
LOBBY

A-1620.0

