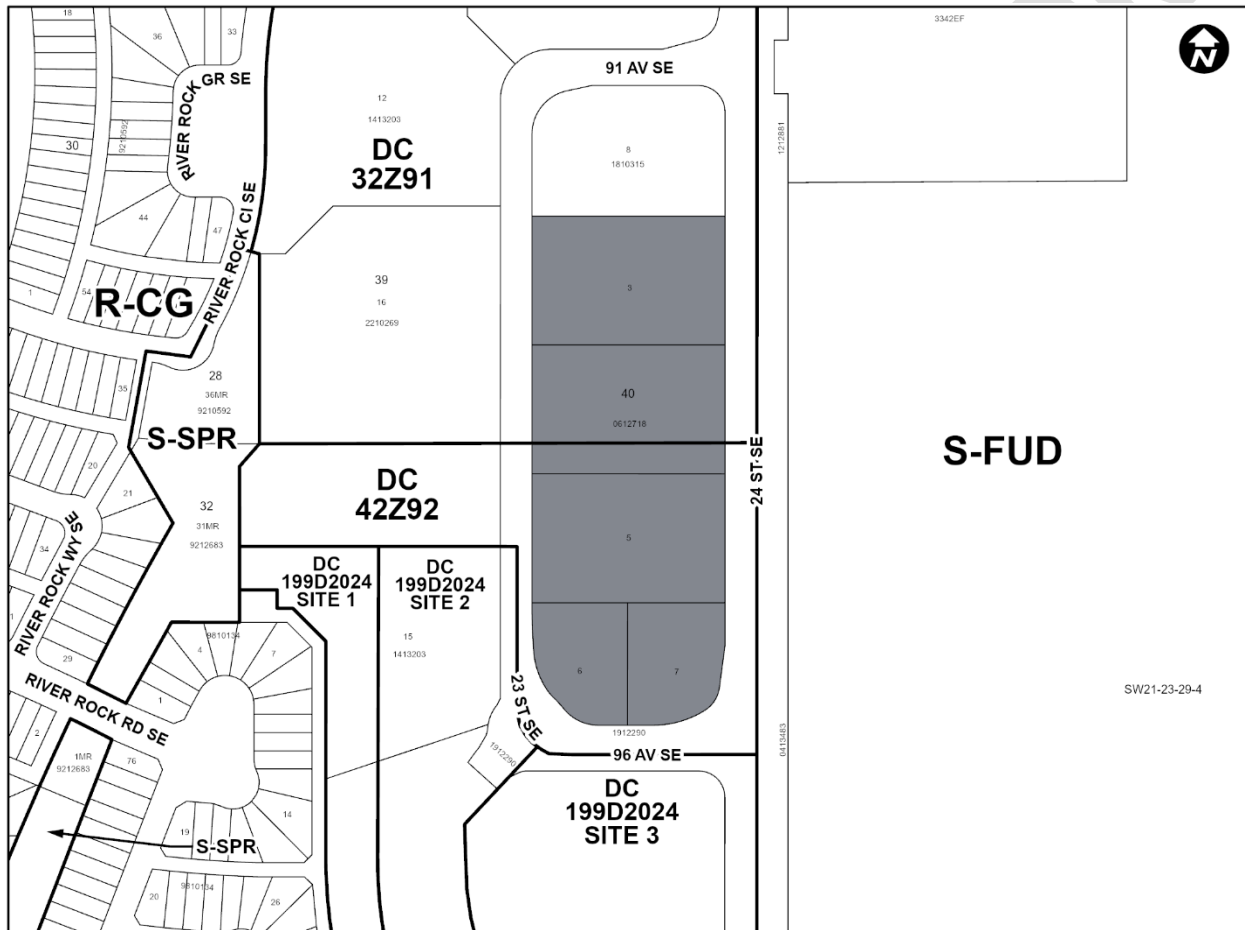


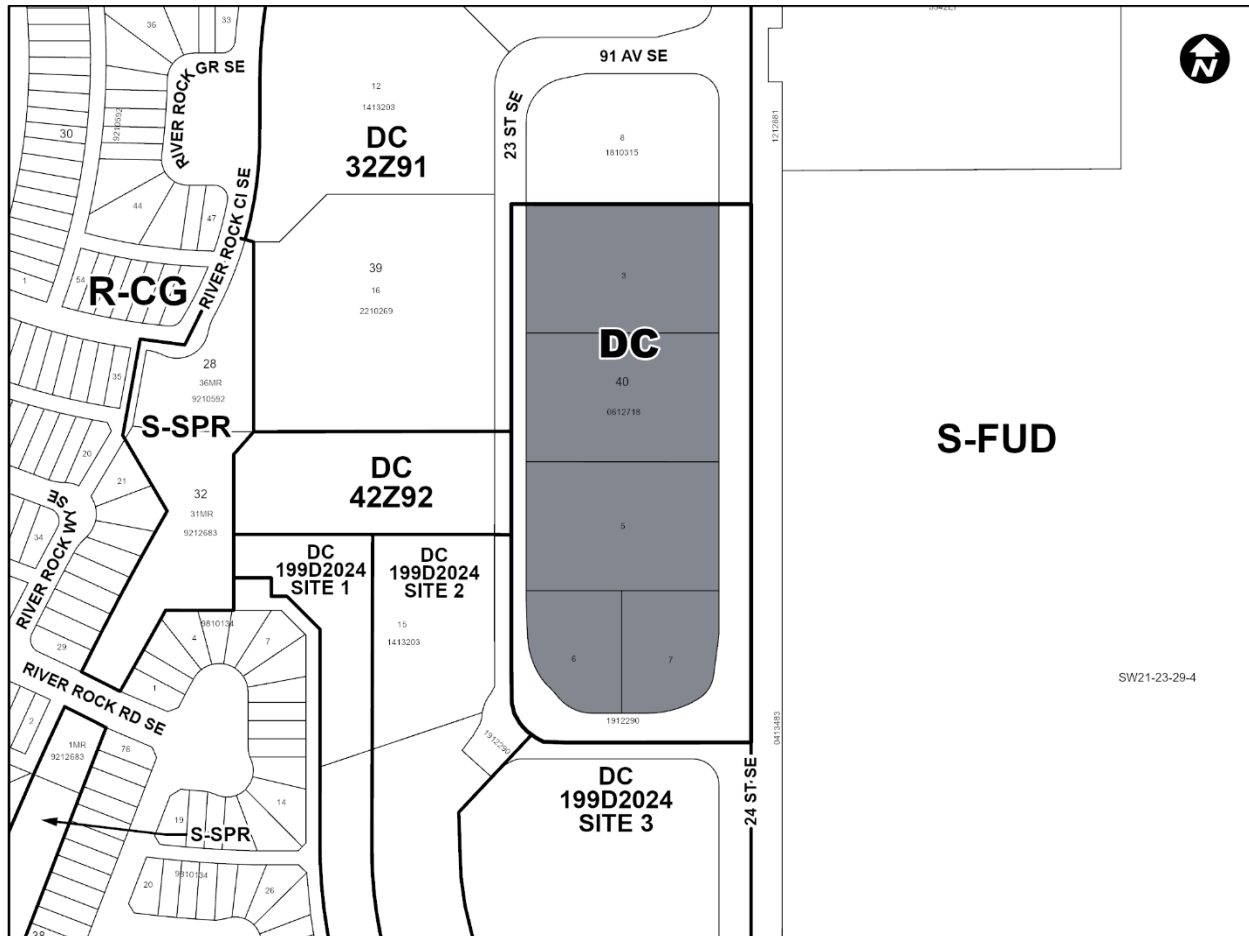
Proposed Direct Control District

1. The Land Use Bylaw, being Bylaw 1P2007 of the City of Calgary, is hereby amended by deleting that portion of the Land Use District Map shown as shaded on Schedule "A" to this Bylaw and replacing it with that portion of the Land Use District Map shown as shaded on Schedule "B" to this Bylaw, including any land use designation, or specific land uses and development guidelines contained in the said Schedule "B".

SCHEDULE A



SCHEDULE B



DIRECT CONTROL DISTRICT

Purpose

- 1 This Direct Control District is intended to allow for the additional uses of health services – medical care and recovery.

Compliance with Bylaw 1P2007

- 2 Unless otherwise specified, the rules and provisions of Parts 1, 2, 3 and 4 of Bylaw 1P2007 apply to this Direct Control District Bylaw.

Reference to Bylaw 1P2007

- 3 Within this Direct Control District Bylaw, a reference to a section of Bylaw 1P2007 is deemed to be a reference to the section as amended from time to time.

Defined Uses

- 4 In this Direct Control District:

(a) **“Health Services – Medical Care and Recovery”** means a use that:

- (i) maintains and operates facilities for both inpatient and outpatient medical care;
- (ii) provides health services that may be preventive, diagnostic, treatment, therapeutic, or rehabilitative in nature;
- (iii) allows for recovery from surgical services or other medical treatment which may include overnight stays; and
- (iv) does not include emergency, intensive, or long-term care.

Permitted Uses

5 The ***permitted uses*** of the Industrial – Commercial (I-C) District of Bylaw 1P2007 are the ***permitted uses*** in this Direct Control District.

Discretionary Uses

6 The ***discretionary uses*** of the Industrial – Commercial (I-C) District of Bylaw 1P2007 are the ***discretionary uses*** in this Direct Control District with the addition of:

- (a) **Health Services – Medical Care and Recovery.**

Bylaw 1P2007 District Rules

7 Unless otherwise specified, the rules of the Industrial – Commercial (I-C) District of Bylaw 1P2007 apply in this Direct Control District.

Floor Area Ratio

8 The maximum ***floor area ratio*** for buildings is 2.0.

Building Height

9 The maximum ***building height*** is 16.0 metres.

Relaxations

10 The ***Development Authority*** may relax the rules contained in Section 7 of this Direct Control District Bylaw in accordance with Sections 31 and 36 of Bylaw 1P2007.