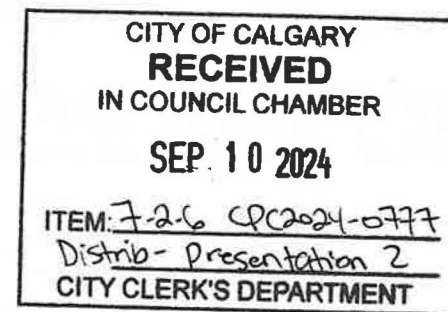


6 CONCERNS

Policy Amendment of Montgomery Area Redevelopment Plan
LOC2024-0090

Bylaw 69P2024

- 1) ENGAGEMENT
- 2) SHADOWING
- 3) PRIVACY
- 4) PARKING
- 5) TREES
- 6) CLIMATE



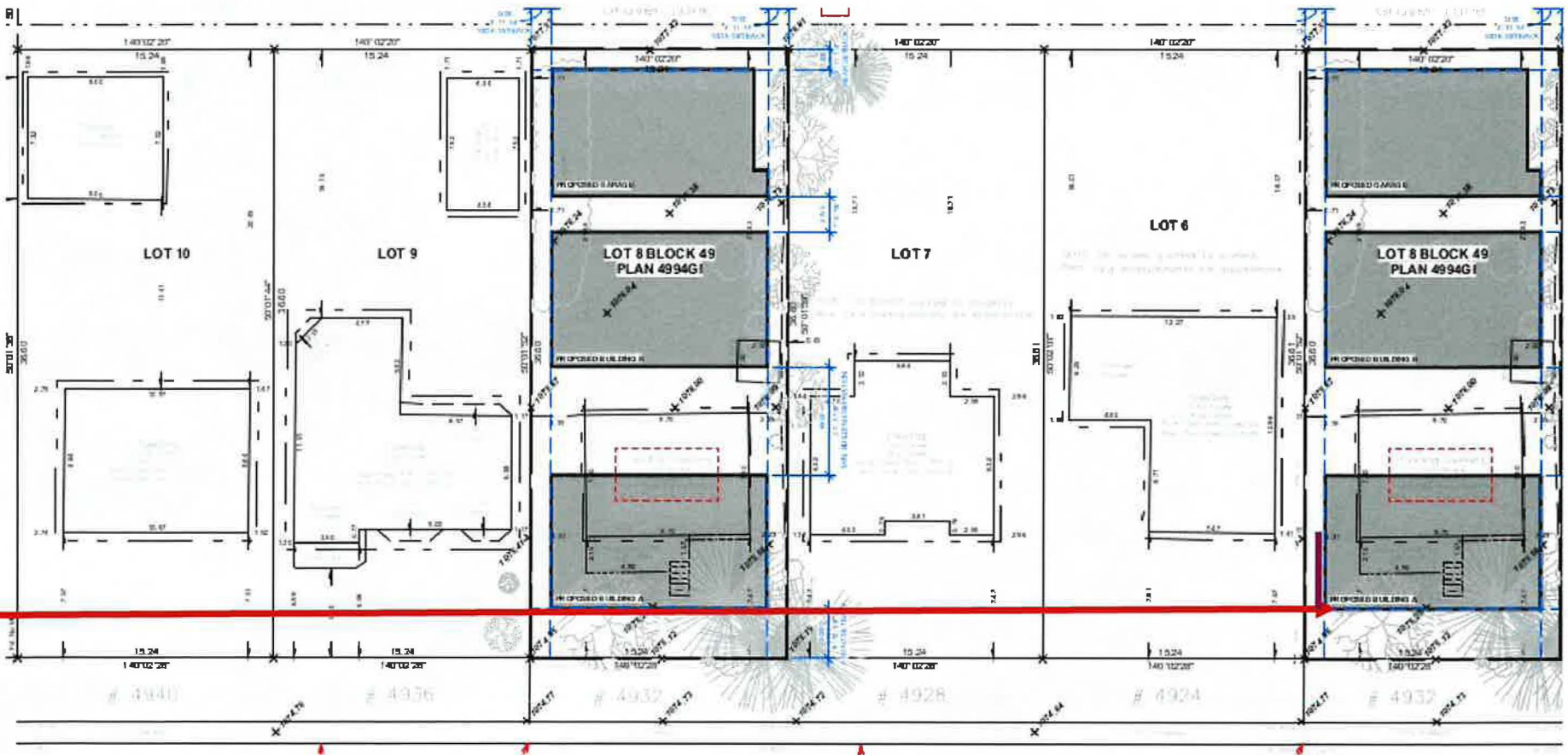
ENGAGEMENT

- 1) DID NOT RECEIVE ANY LETTERS FROM DEVELOPERS
- 2) ONLY FROM CITY
- 3) SIGNS DISAPPEARED 240903



BLOCK SUNLIGHT - SHADOWING

1) NEVER SEE THE LIGHT AGAIN IN LIVINGROOMS AND BEDROOM





The original situation at 4932 21 AVE NW, CALGARY, lots of evaporative COOLING, and very little HEAT reflection. Much greener and less heath Island. This is what a COOL neighbourhood looks like

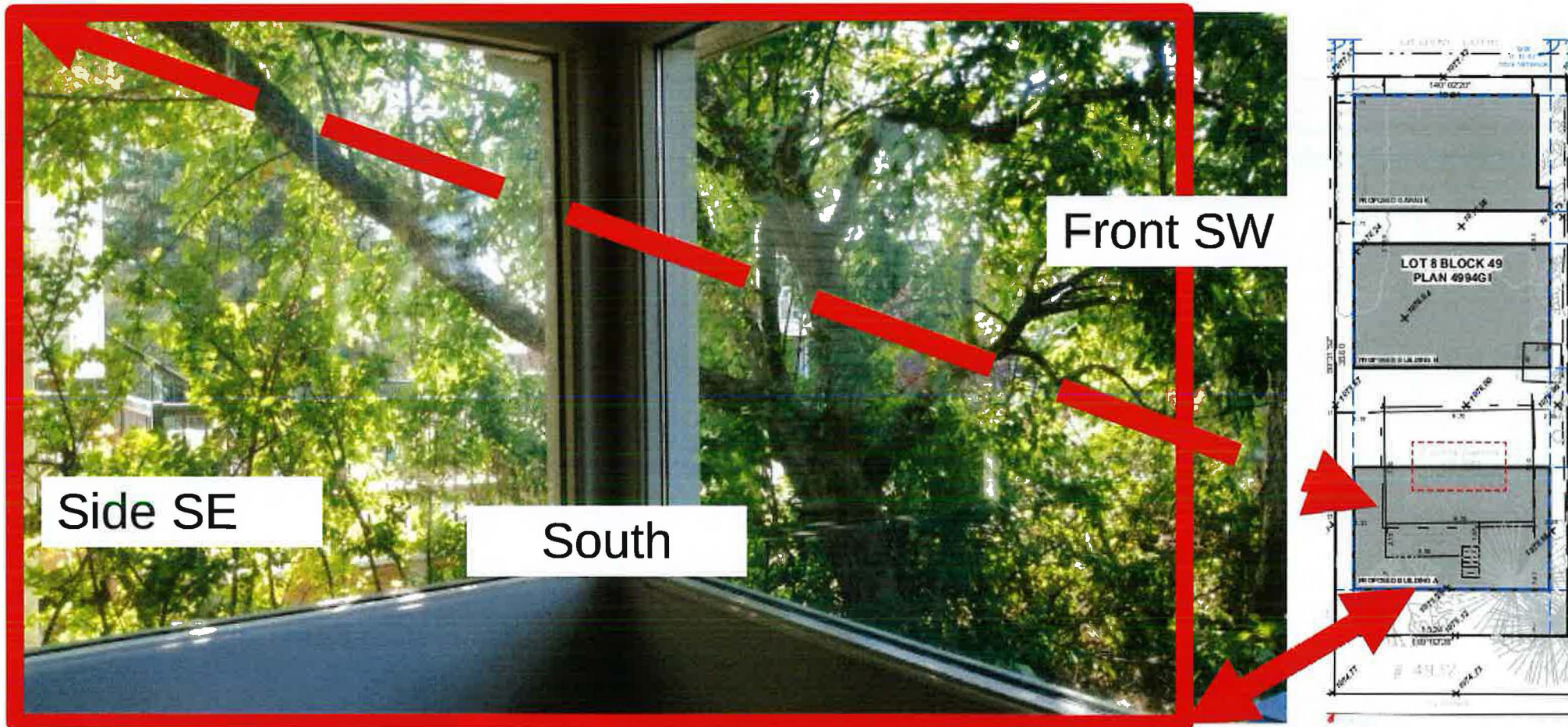


4932 21 Ave NW is 3x taller so 4934 is in the eternal SHADE and so far forward that it creates a tunnel effect to BOTH properties to the SE and NW.

BLOCK SUNLIGHT - SHADOWING

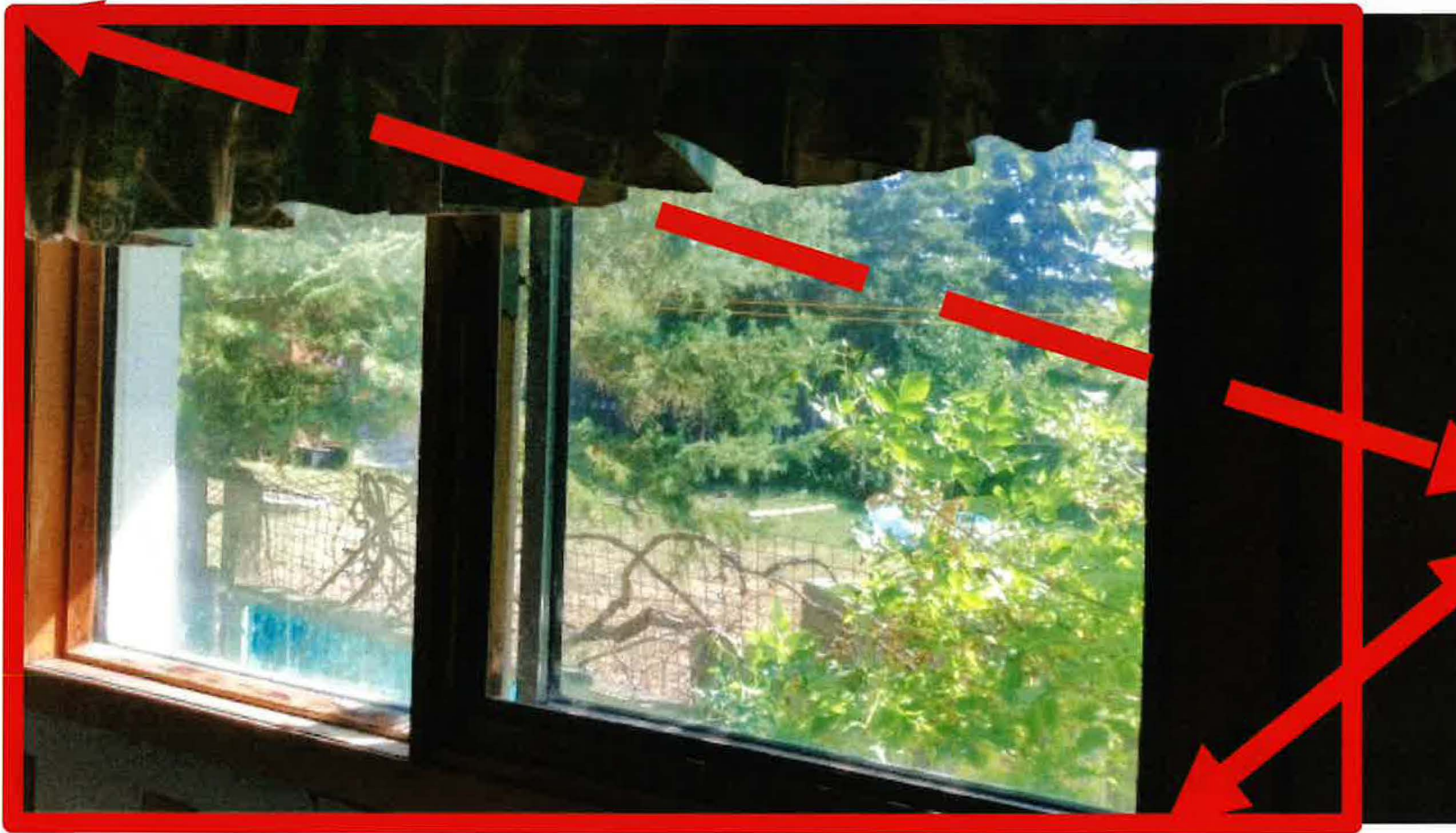
2a) NEVER SEE DIRECT SUN LIGHT AGAIN IN LIVINGROOMS AND BEDROOM – LIVE IN DARK TUNNEL

BY 5 METERS – 14 FEET!



SHADOWING + BEDROOM

2b) NEVER SEE DIRECT SUNLIGHT AGAIN IN LIVINGROOMS AND BEDROOM



3. PRIVACY

FROM 100% PRIVACY TO 20 FAMILIES
LOOKING INTO MY BACKYARD ...
NEW WORD: PROVACY ...



4. PARKING

4 UNITS WITH 4 SUITES ... SAY 8
FAMILIES WITH 2 CARS ... 16 CARS.
ONE BUILDING IN MID-BLOCK
DOUBLES THE CARS ...

But ... increases TAXES!

5. TREES

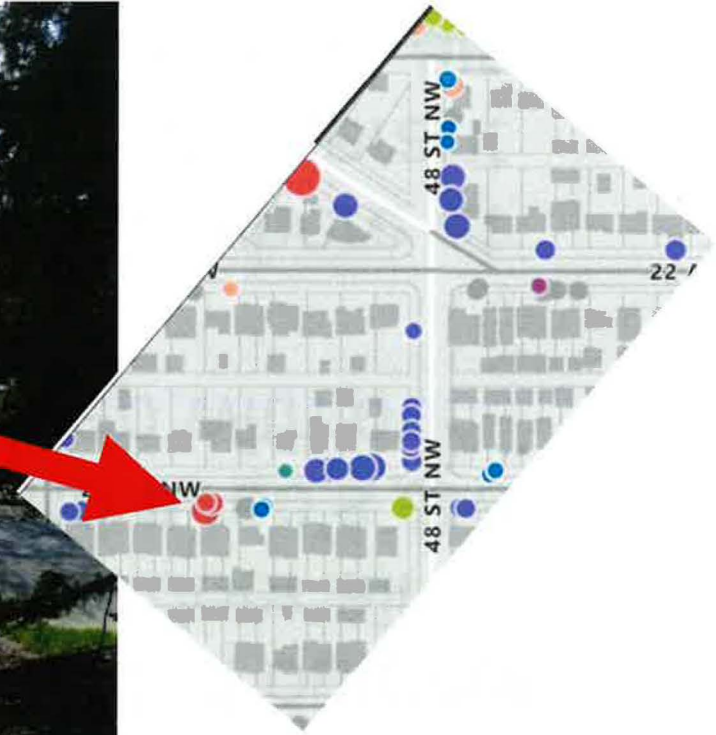
- 1) THEY CLEARCUT ALL TREES
- 2) THEY PLANT NOTHING BACK ...



5. TREES

1) THEY CLEARCUT ALL TREES

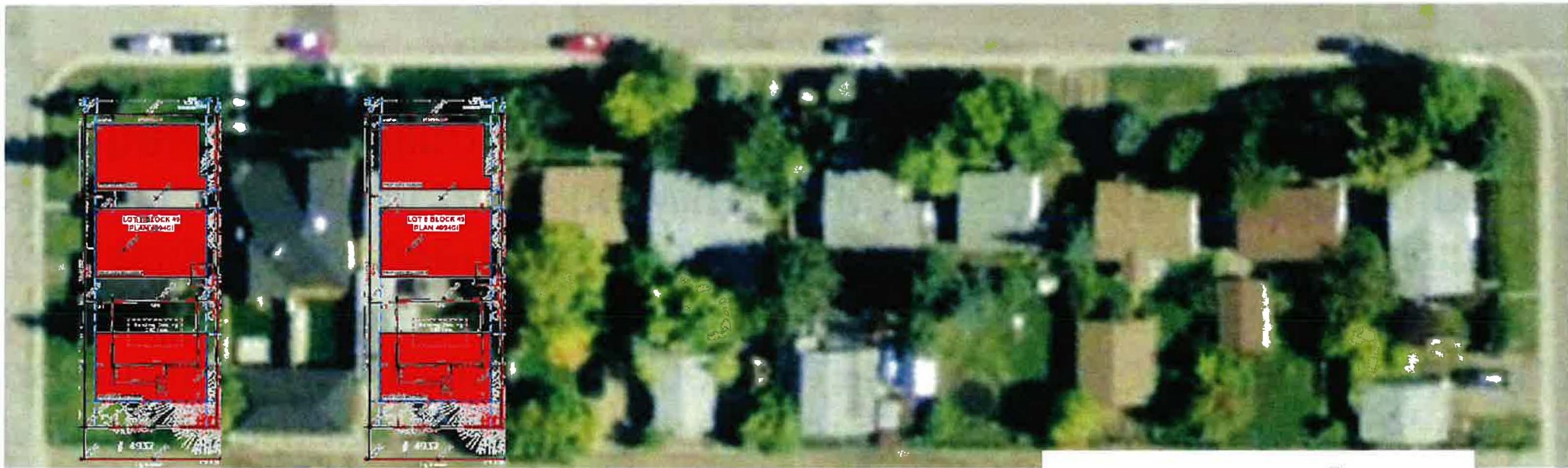
2) THEY PLANT NOTHING BACK ...



6a-c. CLIMATE

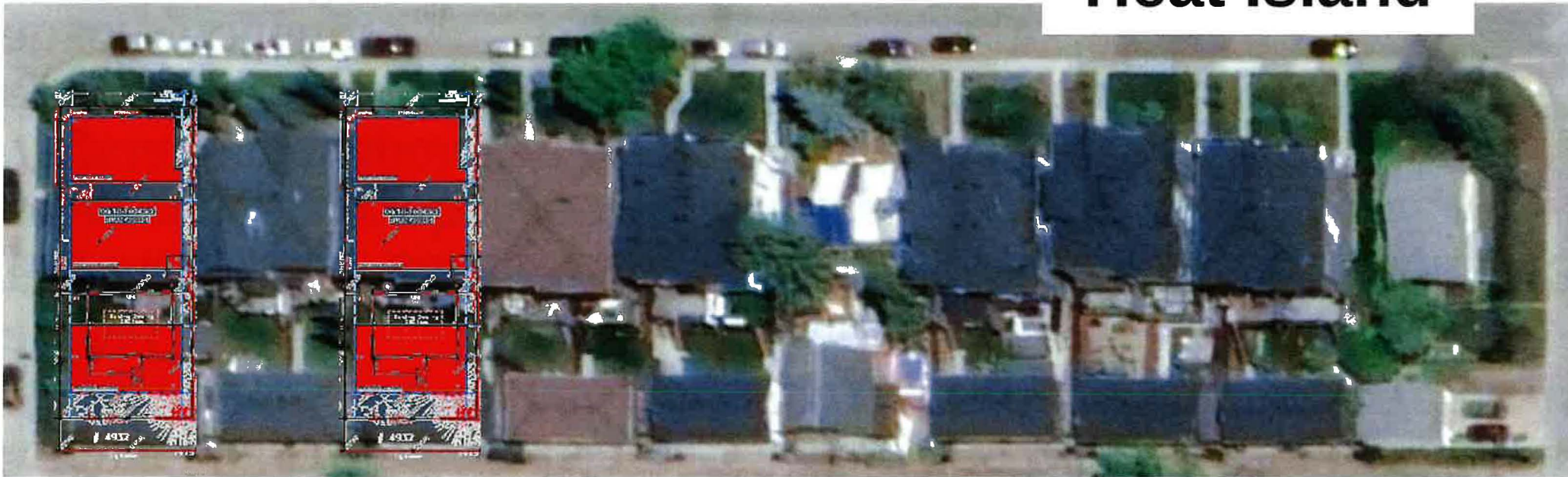
New units have airconditioning which older homes do not. We rely on opening our windows to cool! AC units generate high heat which is expelled outdoor between the houses, increasing the outdoor air temperature in the neighbourhood and airco's are noisy so it becomes impossible to sleep with our windows open...

Worse, AC provide a negative feedback where at high temperatures $>40-50$ Celcius, the refrigerant gas can hardly releases its heat to the outside air, which it heats itself ... and so a thermodynamic feedback loop becomes likely. Because the hotter it gets, the less efficient AirCos get and the more heat they put out. This is just a matter of time... Eventually this may crash the electricity grid.



2009

**Expansion
Heat Island**



2021

On a hot night sleeping is difficult, with 4 ACs from 4 units running next to your bedroom window it becomes impossible ... This August 2024, the heat Island of Tokyo has killed predominantly elderly, because they had no AirCo or did not switch it on. We have **no** AirCo.

The Increase in density contributes directly to increase in heat in 3 ways: no balance between heat absorption and production. Vegetation, evaporative cooling is cut while ACs produce a lot of **extra** heat, and building materials also reflect extra heat and absorb nothing.

The ClimaSeniorinnen, older women concerned about the consequences of heat on their living conditions and health recently launched a case with the *European Court of Human Rights*, who determined a violation of Article 8 (=right to respect for private and family life) of the European Convention on Human Rights.

The efforts by government to house too many people in too little space is so out of balance with issues of sewage, surface runoff, and heat absorption / production that it will keep us out of our sleep in hot nights, and may even kill the elderly...

Bylaw 69P-2024 is extreme, unbalanced, and dictates a density that is so unhealthy that it violates the right to respect for private and family life.

The government and the economy require more people, which require more services and housing, in combination with the developers, this unfortunately becomes a dictatorship of money which requires the maximum price via the maximum doors, covering the maximum surface area with a minimum of green space; ergo flexibility of height and setbacks leads to *extremism*. This reduces R1 to R2 to RC-G and our living space to a **tunnel** between front to back walls of buildings 2 to 3 times higher, which a true democracy with high probability would have voted down in a plebiscite.

The extremistic setbacks and density of 69P-2024 are going to make our lives dark for 8 months from fall to spring and then make some days or weeks hot in summer like hell.