



DP2023-06646 / CPC2024-0953

Development Proposal

September 19, 2024

CITY OF CALGARY
RECEIVED
IN COUNCIL CHAMBER
SEP 19 2024
ITEM: 7.1.1 CPC2024-0953
Distrib- Presentation
CITY CLERK'S DEPARTMENT

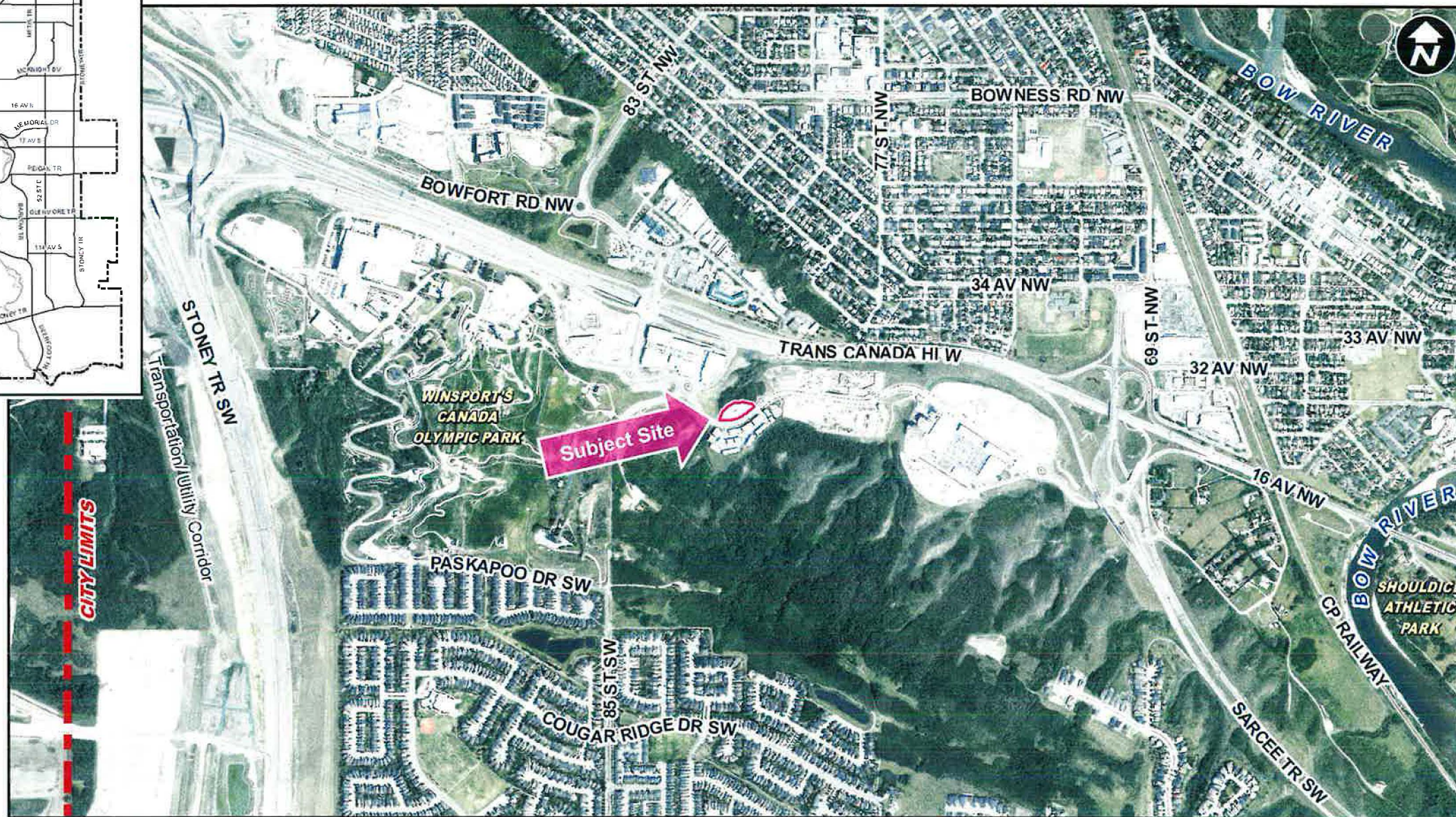
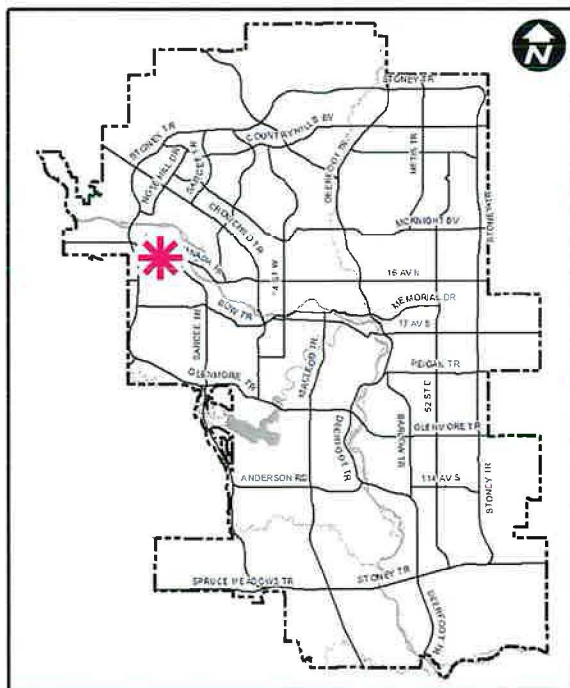


City-Led Outreach

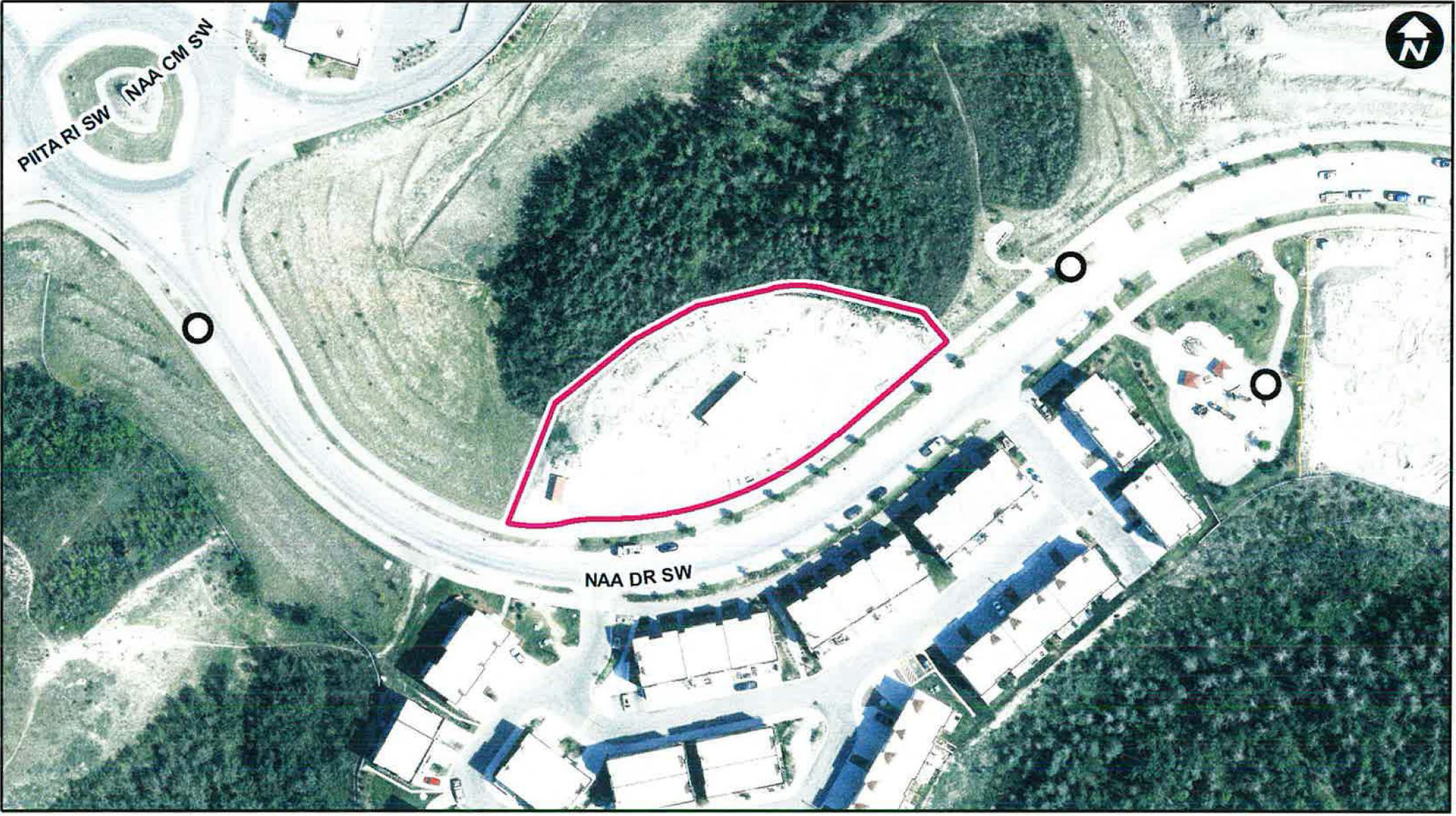
In keeping with Administration's standard practices, the application was circulated to external partners, notice posted on site and published online.

RECOMMENDATION:

That Calgary Planning Commission **APPROVE** the Development Permit (DP2023-06646) for a New: Multi-Residential Development (1 building) at 1878 Na'a Drive SW (Plan 1612946, Block 2, Lot 2) with conditions (Attachment 2).







LEGEND

○ Bus Stop

Parcel Size:

0.36 ha
(0.89 ac)

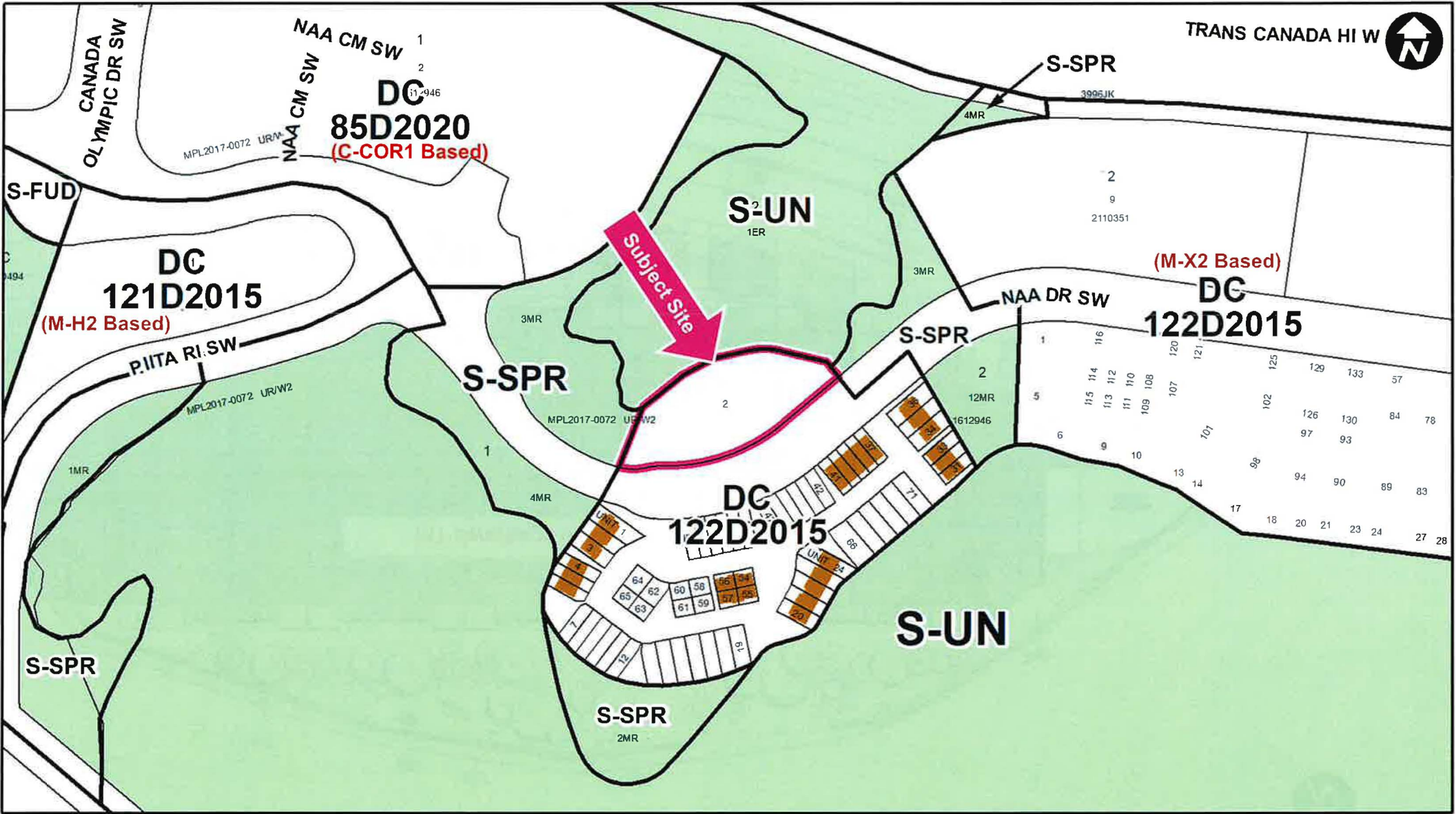
Site Photo (Looking East)



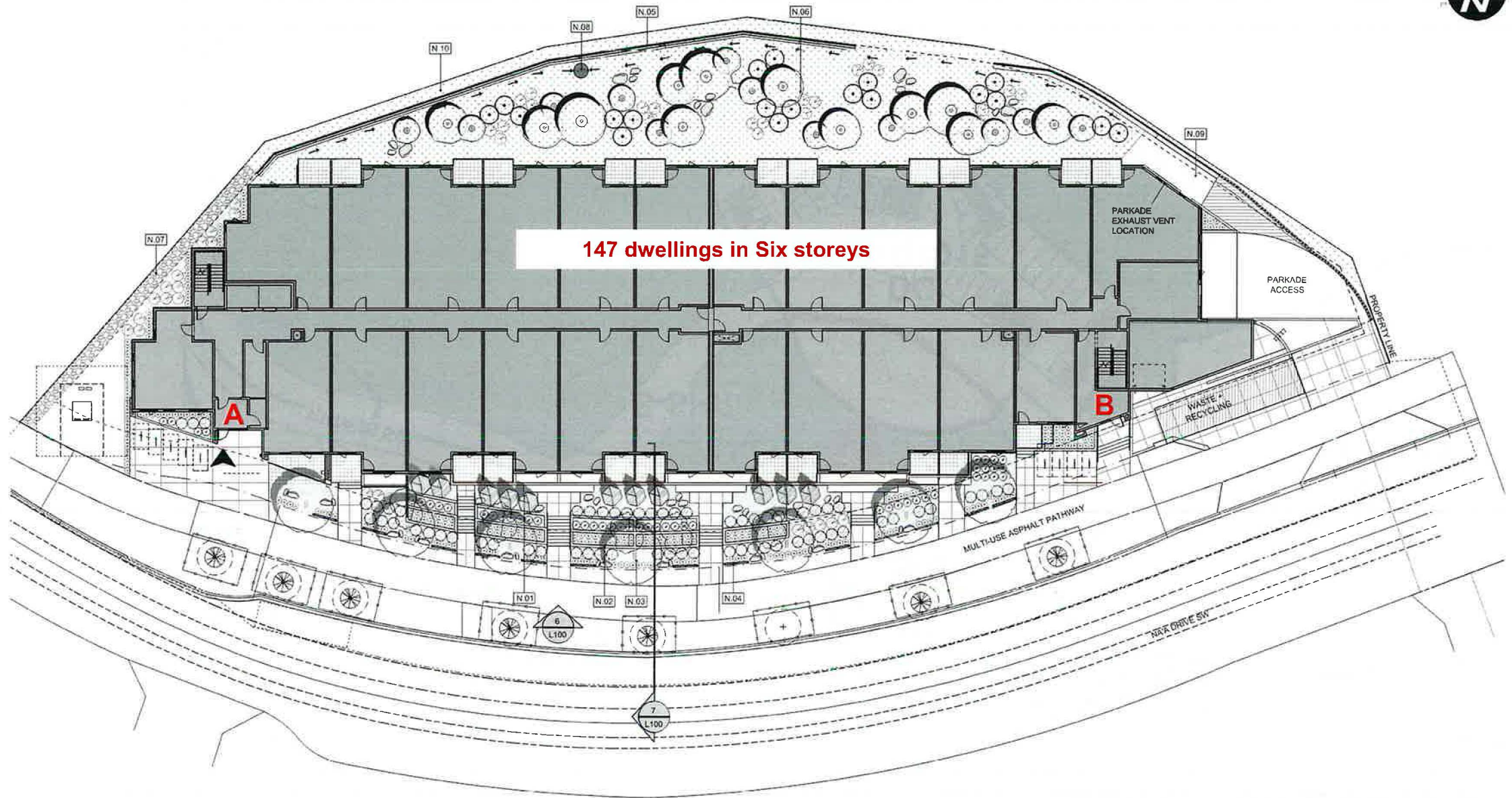
Site Photo (Looking West)



Surrounding Land Use



- LEGEND**
- Rowhouse / multi-residential
 - Parks and Openspace
 - Land Use Site Boundary





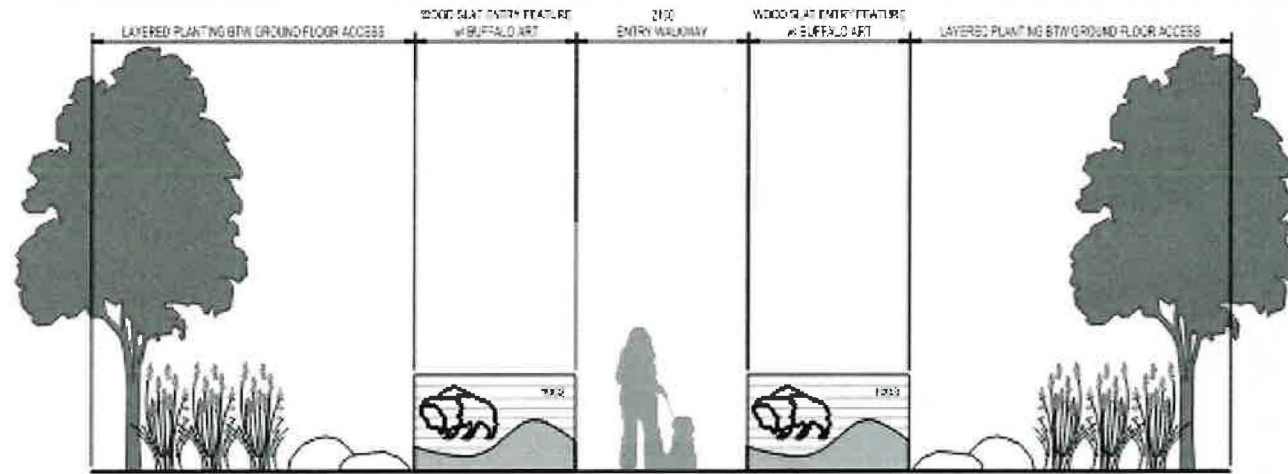




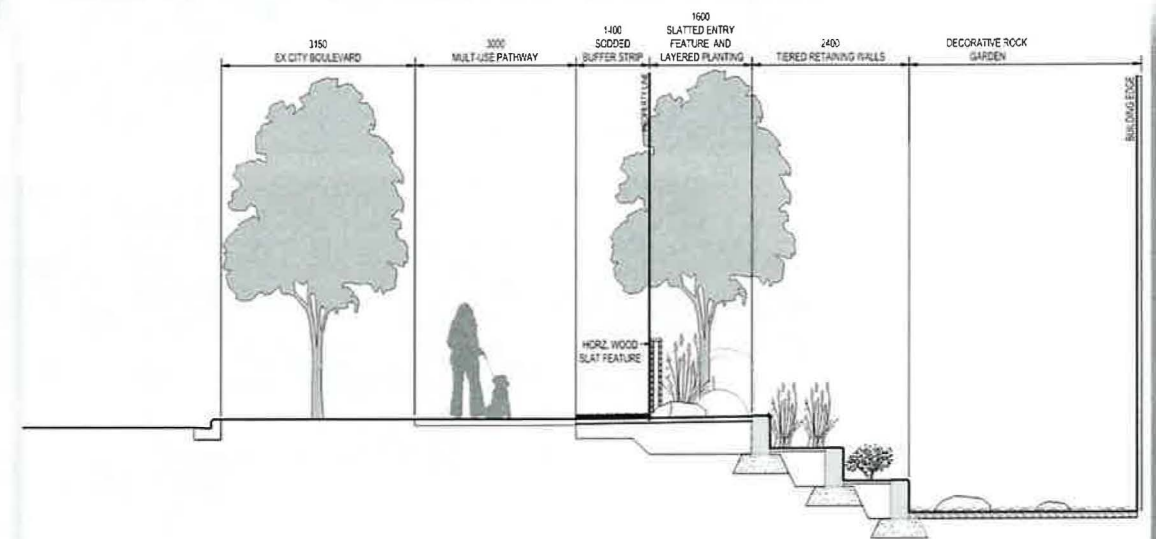
Cultural & Indigenous Representations (Building Name & Rooftop Amenity) 14



Cultural & Indigenous Representations (Animal Expressions & Landscaping) 15

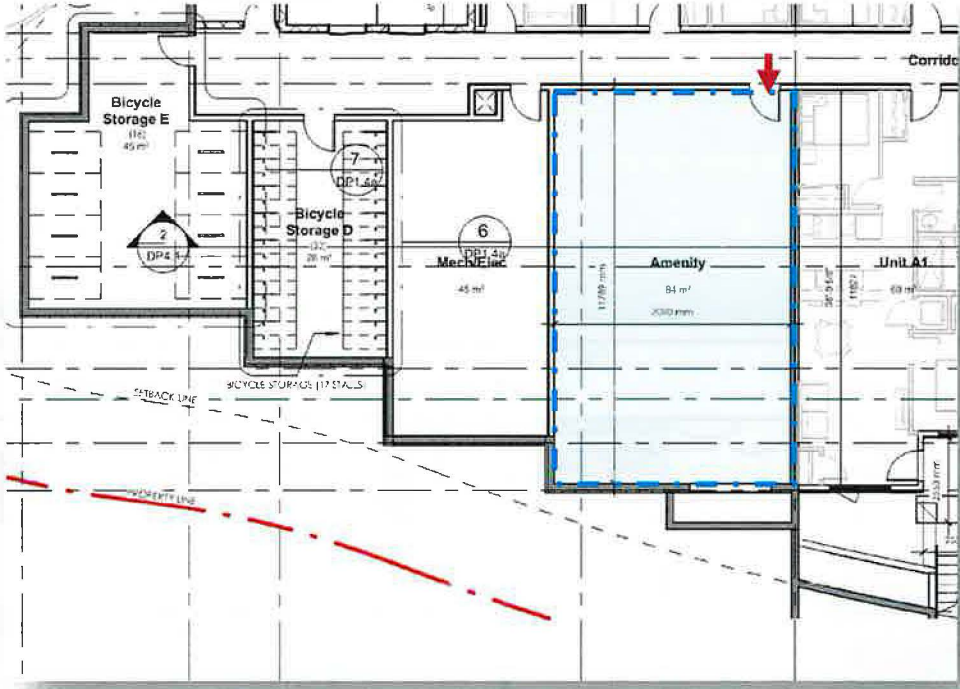


6 TYPICAL GROUND FLOOR UNIT ENTRY STREET ELEVATION
SCALE 1:50



TIERED RETAINING WALL SECTION

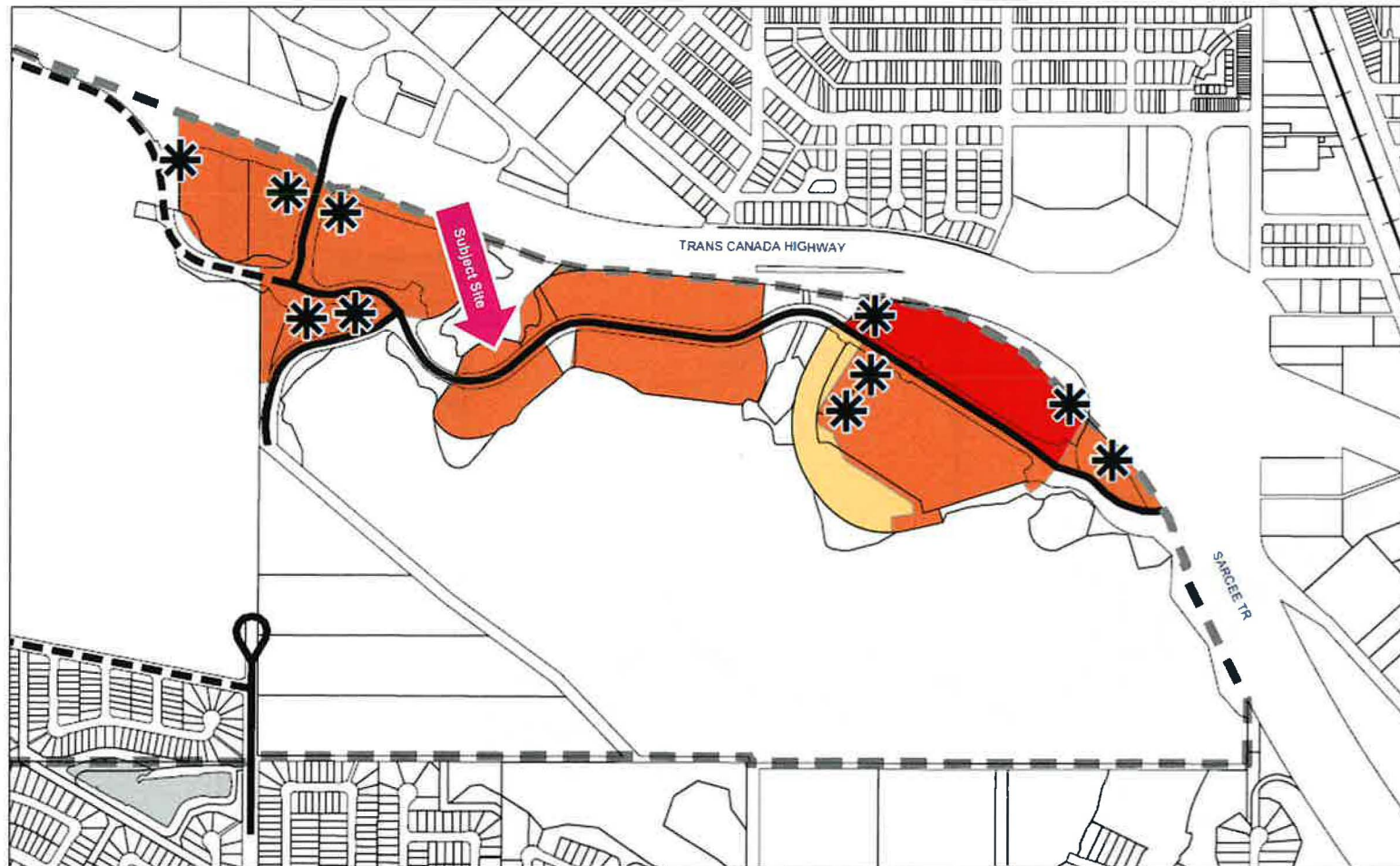
Cultural & Indigenous Representations (Interior Common Amenity Space) 16



RECOMMENDATION:







That Calgary Planning Commission **APPROVE** the Development Permit (DP2023-06646) for a New: Multi-Residential Development (1 building) at 1878 Na'a Drive SW (Plan 1612946, Block 2, Lot 2) with conditions (Attachment 2).

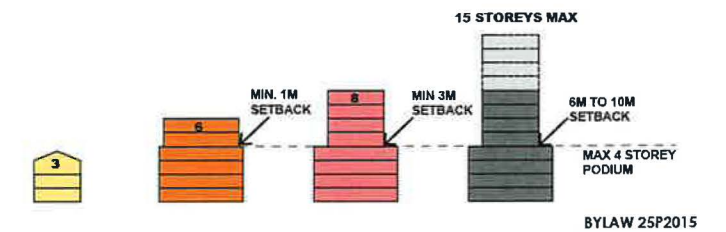
Supplementary Slides



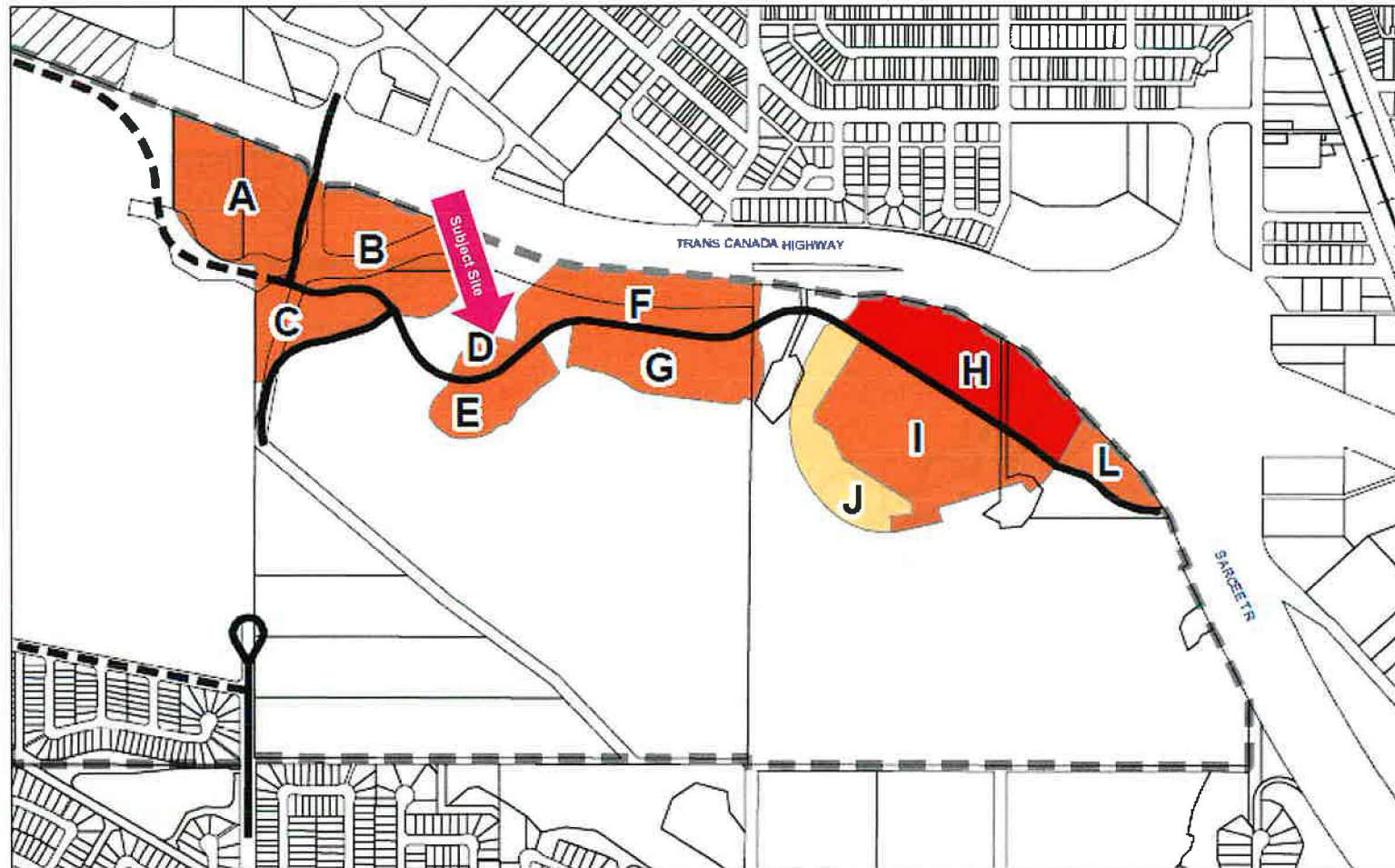
Map 6

Building Height

-  Plan Boundary
-  Transportation Utility Corridor
-  Prominent Height Allowance Site up to 15 Stories, one at 22 Stories
-  Low Profile Height Allowance Zone - 3 Stories
-  Contextual Height Allowance Zone - 6 Stories
-  Mid Range Height Allowance Zone - 8 Stories



BYLAW 19P2019

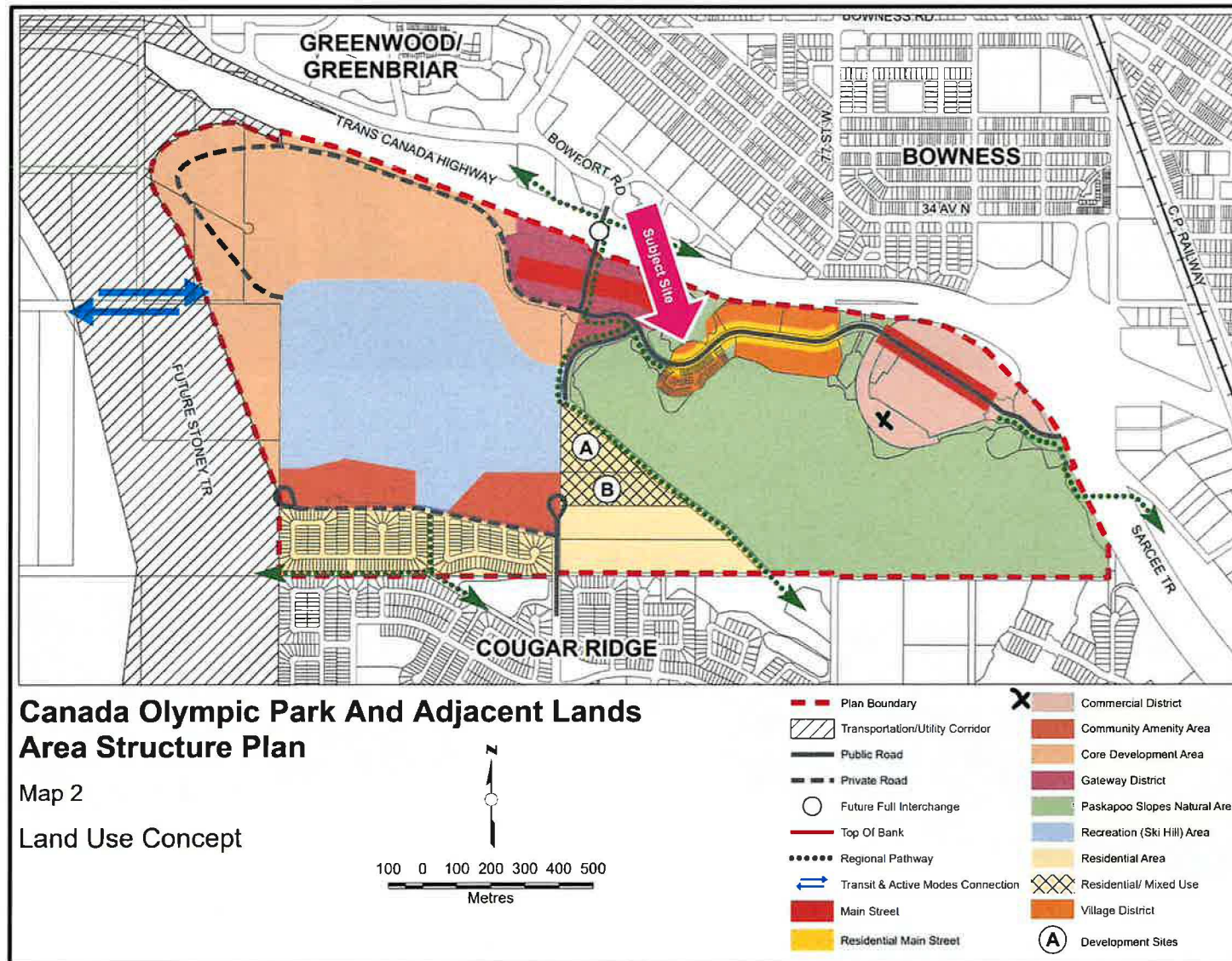


Map 4

Development Blocks

- Plan Boundary
- ▨ Transportation Utility Corridor

BYLAW 25P2015



APPROVED: 1P2005
 AMENDED: 39P2017, 32P2021



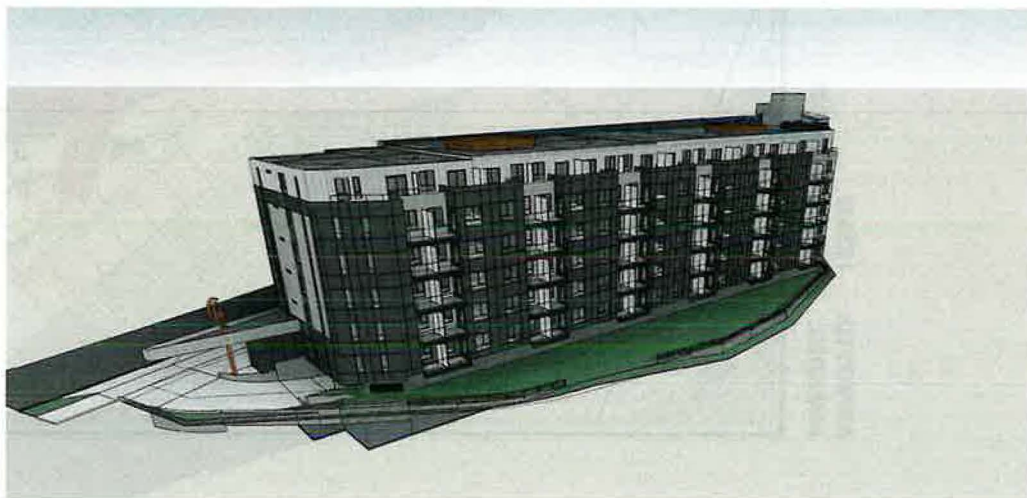
3D View 1



3D View 2



3D View 3



3D View 4

