

# Development Permit (DP2022-6711) Summary

The proposed development permit features 22 units in two buildings separated by an inner courtyard. Half the units (11) are to be 45 square metres or less, would not require vehicle parking, and would have assigned bicycle storage. The larger units would have one assigned parking stall each.

**Figure 1: Rendering looking southeast**



**Figure 2: Streetscape**

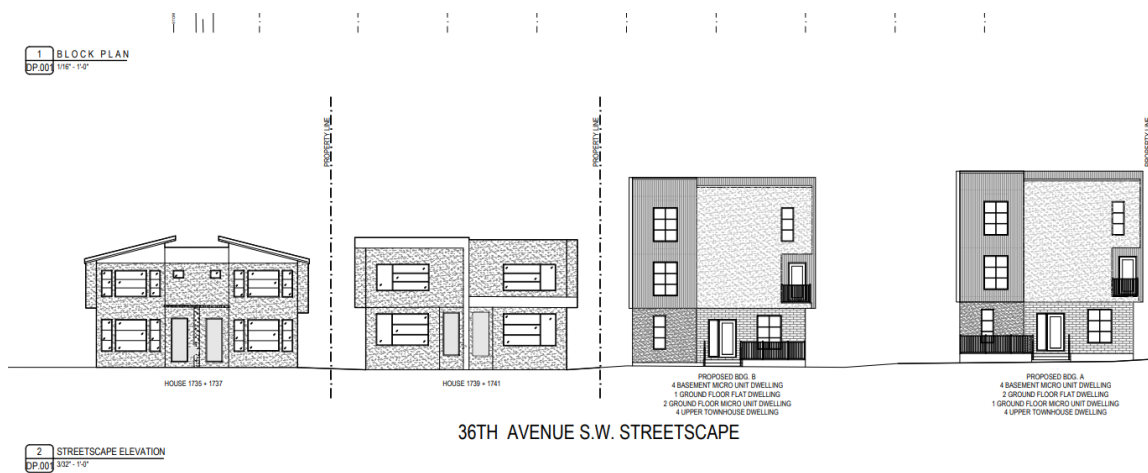


Figure 3: Site Plan

