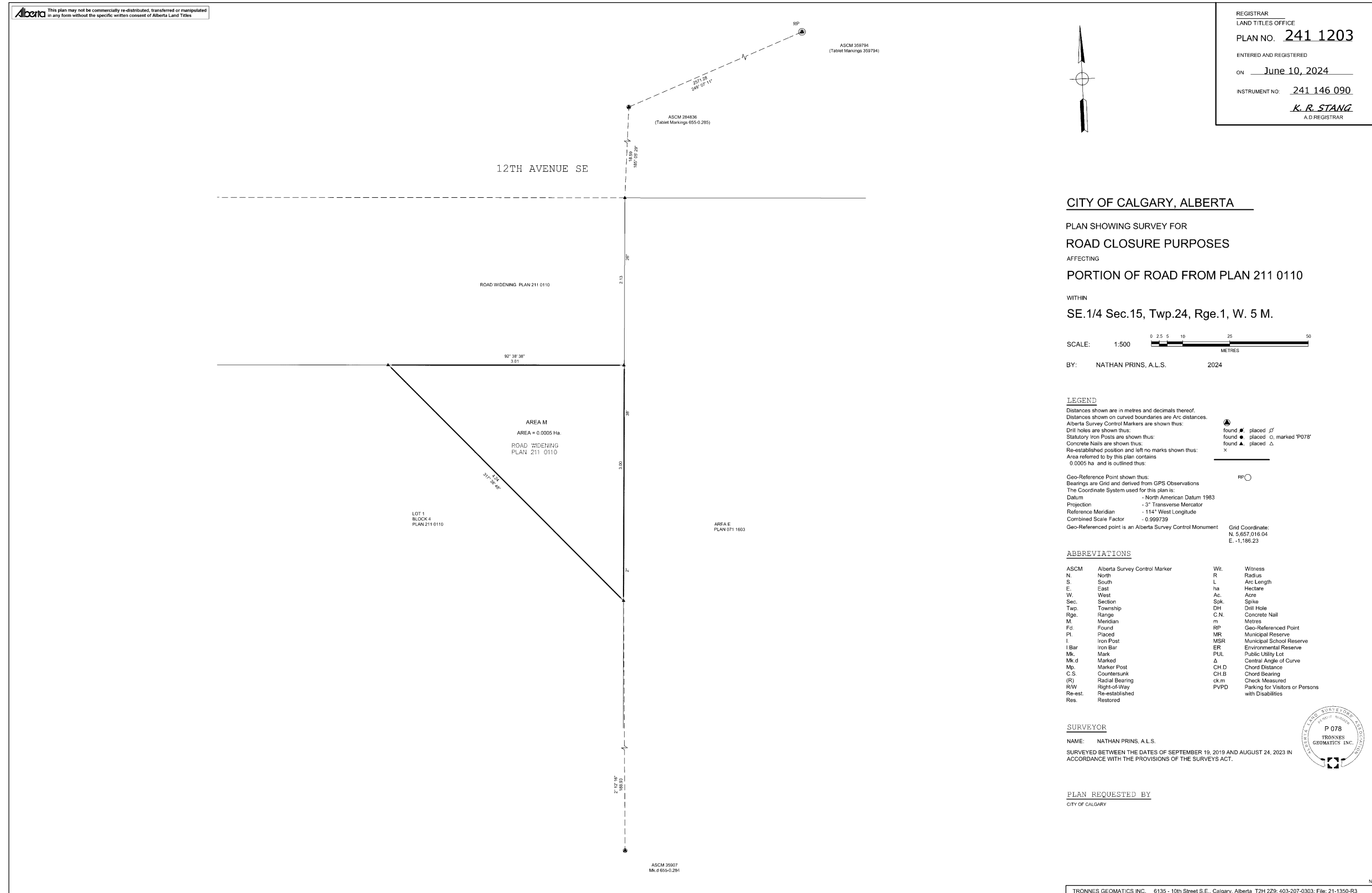


Registered Road Closure Plan



CITY OF CALGARY, ALBERTA

PLAN SHOWING SURVEY FOR
ROAD CLOSURE PURPOSES
AFFECTING
PORTION OF ROAD FROM PLAN 211 0110
WITHIN
SE.1/4 Sec.15, Twp.24, Rge.1, W. 5 M.

SCALE: 1:500
BY: NATHAN PRINS, A.L.S. 2024

LEGEND
Distances shown are in metres and decimals thereof.
Distances shown on curved boundaries are Arc distances.
Alberta Survey Control Markers are shown thus:
Drill holes are shown thus:
Statutory Iron Posts are shown thus:
Concrete Nails are shown thus:
Re-established position and left no marks shown thus:
Area referred to by this plan contains
0.0005 ha and is outlined thus:
Geo-Reference Point shown thus:
Bearings are Grid and derived from GPS Observations
The Coordinate System used for this plan is:
Datum - North American Datum 1983
Projection - 3° Transverse Mercator
Reference Meridian - 114° West Longitude
Combined Scale Factor - 0.999739
Geo-Referenced point is an Alberta Survey Control Monument
Grid Coordinates:
N: 5,657,016.04
E: -1,186.23

ABBREVIATIONS

ASCM	Alberta Survey Control Marker	Wi.	Witness
N	North	R	Radius
S	South	L	Arc Length
E.	East	ha	Hectare
W.	West	Ac.	Acre
Sec.	Section	Sq.k.	Sq.kilometre
Twp.	Township	DH	Drill Hole
Rge.	Range	C.N.	Concrete Nail
M.	Meridian	m	Metres
Fd.	Found	RP	Geo-Referenced Point
Pl.	Placed	MR	Municipal Reserve
I	Iron Post	MSR	Municipal School Reserve
I Bar	Iron Bar	ER	Environmental Reserve
Mk.	Mark	PUL	Public Utility Lot
Mk d	Marked	Δ	Central Angle of Curve
Mp.	Marker Post	CH D	Chord Distance
C.S.	Countersunk	CH B	Chord Bearing
(R)	Radial Bearing	ck.m	Check Measured
R/W	Right-of-Way	PVPD	Parking for Visitors or Persons with Disabilities
Re-est.	Re-established		
Res.	Restored		

SURVEYOR
NAME: NATHAN PRINS, A.L.S.
SURVEYED BETWEEN THE DATES OF SEPTEMBER 19, 2019 AND AUGUST 24, 2023 IN ACCORDANCE WITH THE PROVISIONS OF THE SURVEYS ACT.

PLAN REQUESTED BY
CITY OF CALGARY

