



WEST CREEK

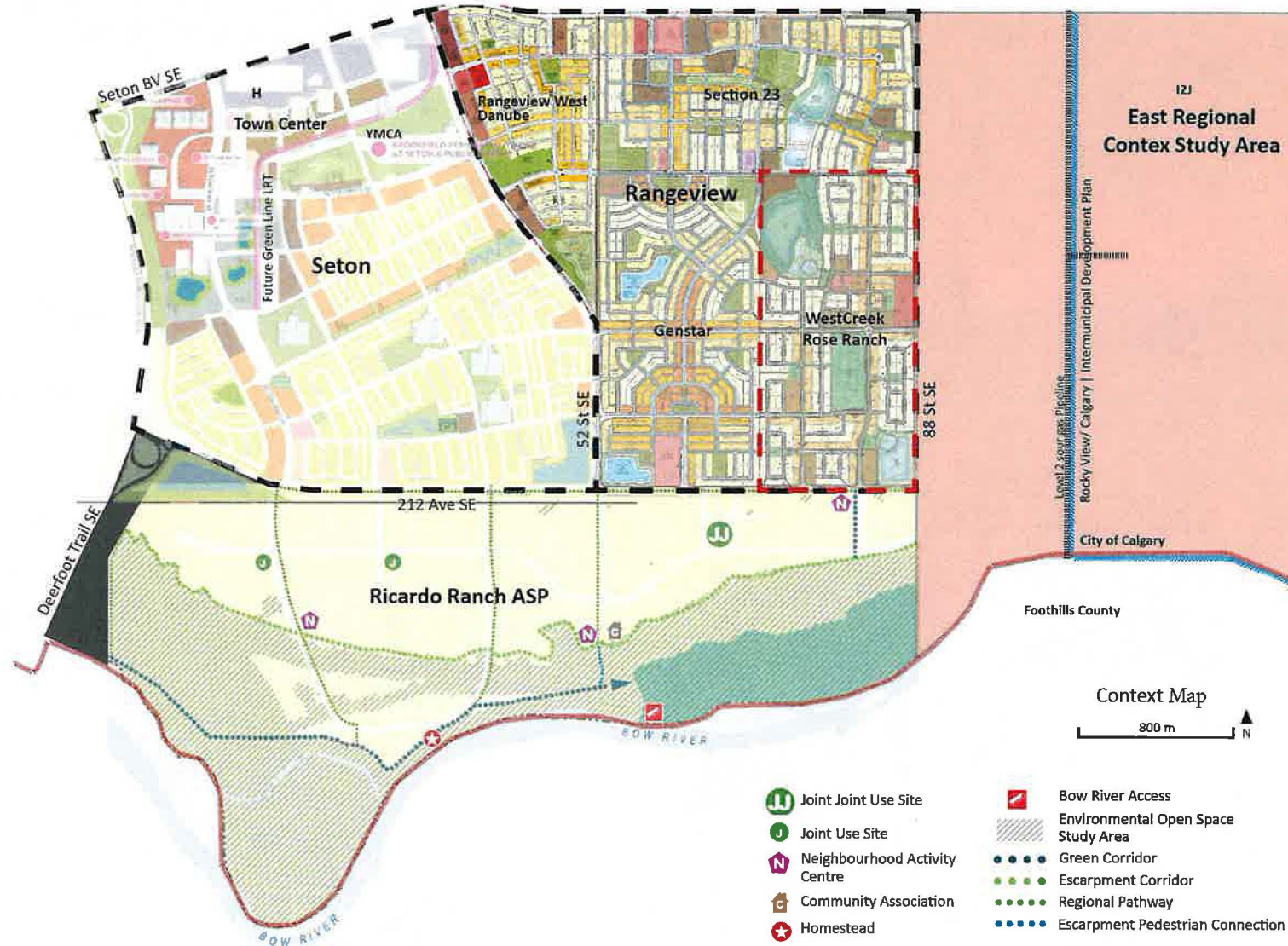
Rose Ranch

Council Presentation

July 16, 2024

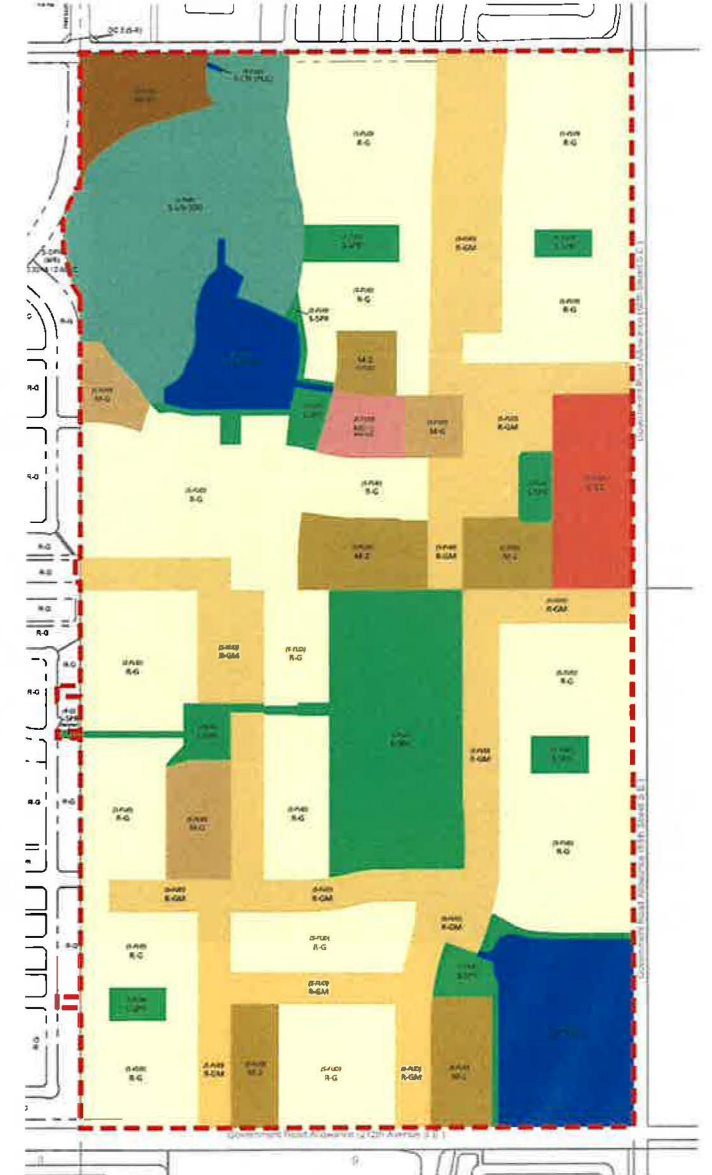


Context

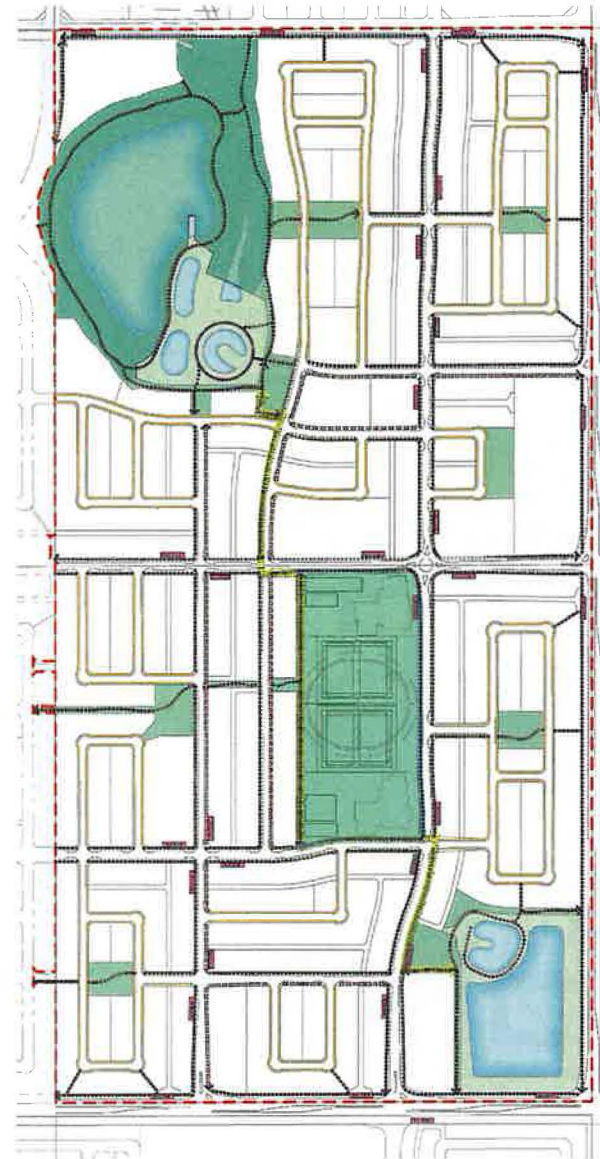


Vision

- Natural extension of the developing communities of Section 23 and Genstar's Rangeview.
- Wild Rose & Roseberry bushes native to the area and Alberta as inspiration;
- Joint Use School Site (Two Schools):
 - K-6
 - Elementary
- One Neighborhood Activity Centre
- One Community Retail Centre
- Preservation of existing wetland
- Diverse range of housing options (live-work, multifamily, townhouses and single-family housing)



Open Space & Pathway Network

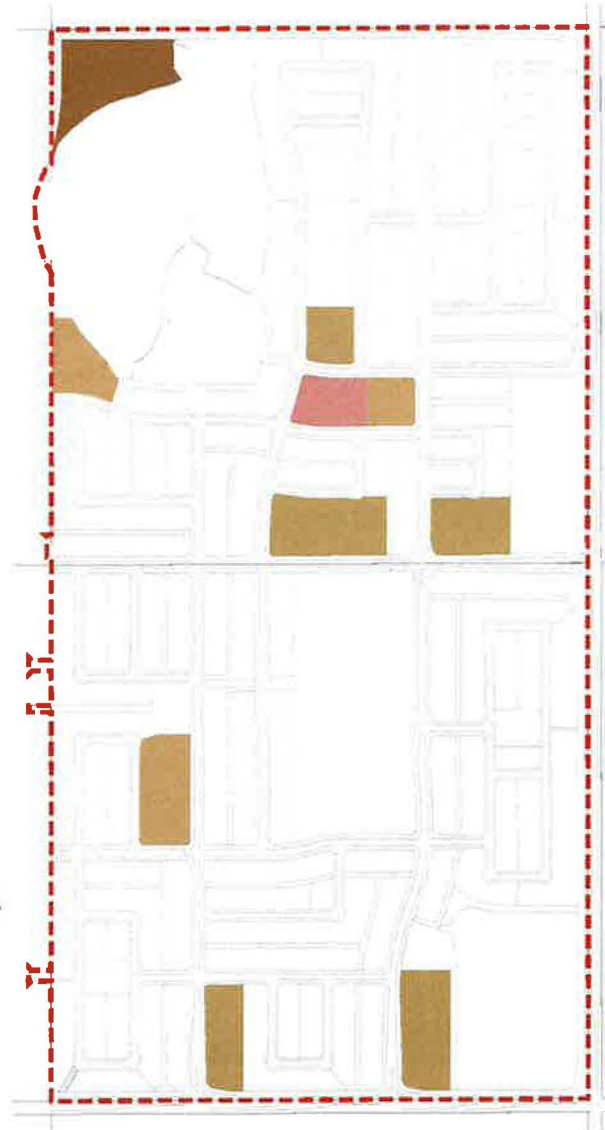


- Subject Lands
- 1.5m MONOWALK
- 2.0m MONOWALK
- 3.5m MULTI-USE MONOWALK
- 3.0m MULTI-USE PATHWAY
- REGIONAL PATHWAY
- LOCAL PATHWAY
- WALKWAY CONNECTION
- NATURALIZED PATHWAY
- GREEN CORRIDOR
- BUS ZONE

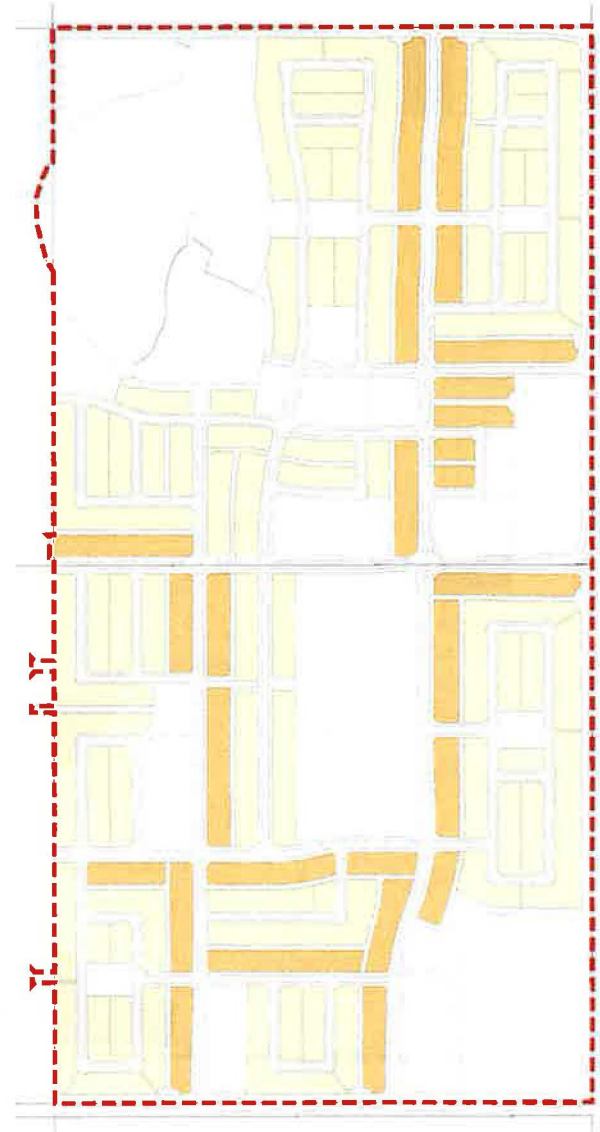
Scale: NTS



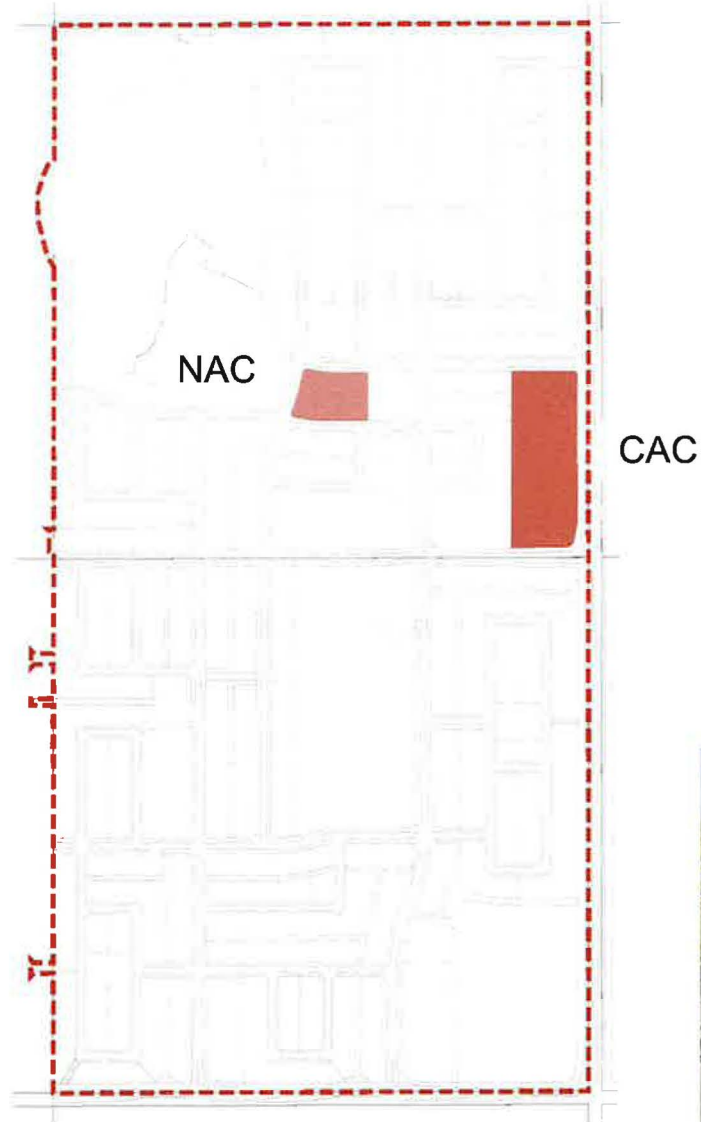
Multi-Family



Low Density Mixed Housing

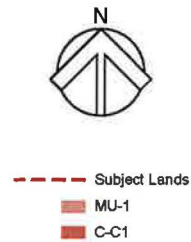


Mixed Use & Commercial



CITY OF CALGARY
RECEIVED
IN COUNCIL CHAMBER

JUL 16 2024
ITEM: 7.2.48 CPC2024-0666
Distrh-Presentation 2
CITY CLERK'S DEPARTMENT



Our Team

WestCreek Developments

Landowner and Developer

Arcadis

Planning Consultant

LBC Engineering

Civil Engineering

Magma Engineering

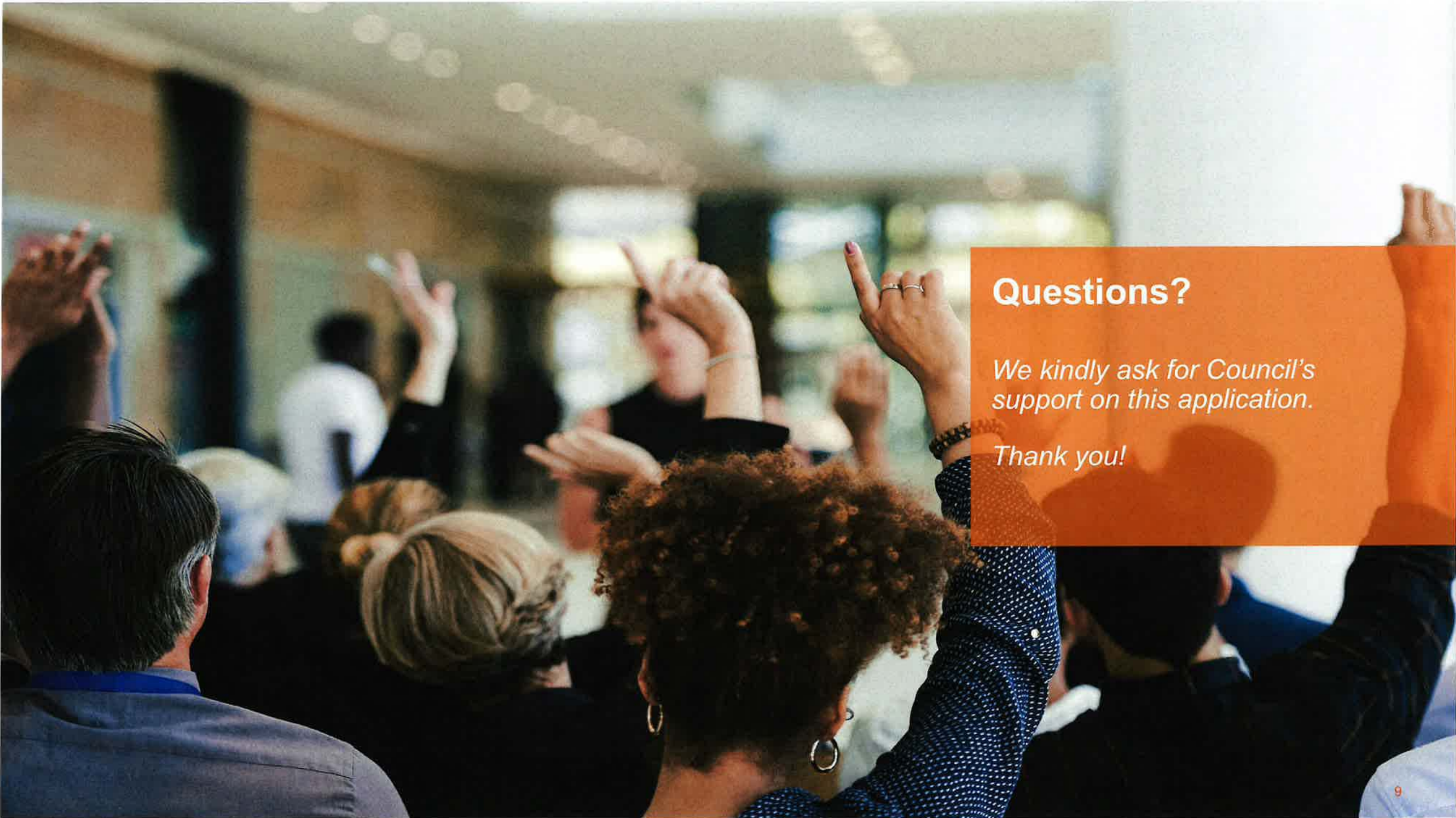
Stormwater Management

LA West

Landscape Architect

WSP

Transportation



Questions?

We kindly ask for Council's support on this application.

Thank you!