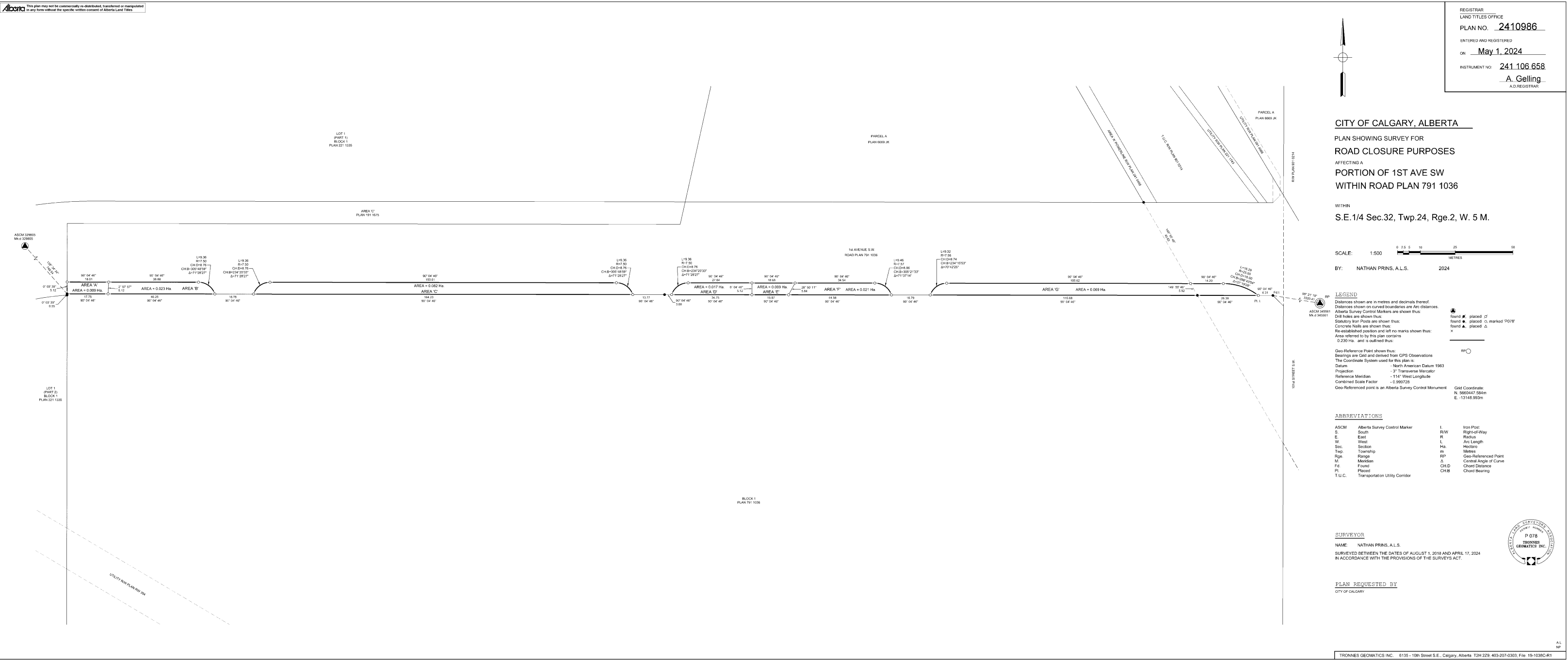
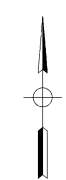


Registered Road Closure Plan



REGISTRAR
LAND TITLES OFFICE
PLAN NO. 2410986
ENTERED AND REGISTERED
ON May 1, 2024
INSTRUMENT NO. 241 106 658
A. Gelling
A.D. REGISTRAR



CITY OF CALGARY, ALBERTA
PLAN SURVEY FOR
ROAD CLOSURE PURPOSES
AFFECTING A
PORTION OF 1ST AVE SW
WITHIN ROAD PLAN 791 1036

WITHIN
S.E. 1/4 Sec.32, Twp.24, Rge.2, W. 5 M.

SCALE: 1:500
BY: NATHAN PRINS, A.L.S. 2024

LEGEND
Distances shown are in metres and decimals thereof.
Distances shown on curved boundaries are Arc distances.
Alberta Survey Control Markers are shown thus: found placed marked "POB" found placed found placed
Drill holes are shown thus:
Stalutory Iron Posts are shown thus:
Concrete Nails are shown thus:
Re-established position and left no marks shown thus:
Area referred to by this plan contains 0.230 Ha. and is outlined thus:
Geo-Reference Point shown thus:
Bearings are GHD and derived from GPS Observations
The Coordinate System used for this plan is:
Datum - North American Datum 1983
Projection - 3° Transverse Mercator
Reference Meridian - 114° West Longitude
Combined Scale Factor - 0.999728
Geo-Referenced point is an Alberta Survey Control Monument
Grid Coordinates: N. 566047.584m E. -13148.993m

ABBREVIATIONS

ASCM	Alberta Survey Control Marker	I	Iron Post
S	South	R/W	Right-of-Way
E	East	R	Radius
W	West	L	Arc Length
Sec.	Section	Ha.	Hectare
Twp.	Township	m	Metre
Rge.	Range	RP	Geo-Referenced Point
M	Median	A	Central Angle of Curve
Fd	Found	CHD	Chord Distance
Pl	Placed	CHB	Chord Bearing
T.U.C.	Transportation Utility Corridor		

SURVEYOR
NAME: NATHAN PRINS, A.L.S.
SURVEYED BETWEEN THE DATES OF AUGUST 1, 2019 AND APRIL 17, 2024
IN ACCORDANCE WITH THE PROVISIONS OF THE SURVEYS ACT.

PLAN REQUESTED BY
CITY OF CALGARY

