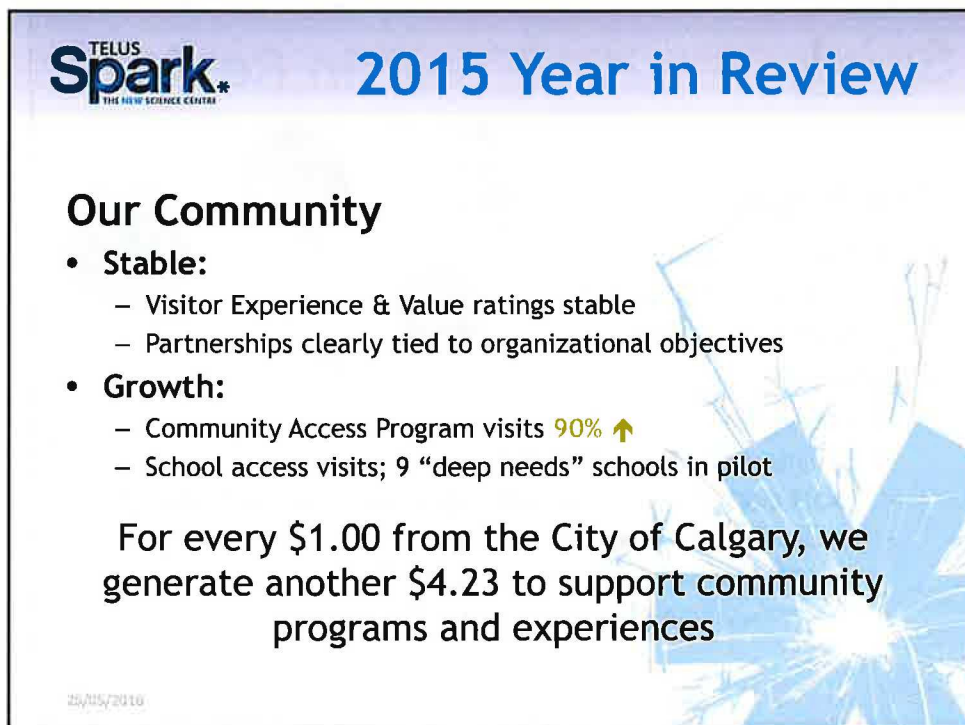


25/05/2016



**Community
Connections
Program = 40
partner agencies
from a broad
cross-section of
social issues**

*Dear Jo Bauchard +
TELLIS Spark Staff + Management*

*Thank you for the 2015
Lending Membership Cards. These
cards have gone a long way to
opening your facility to people
with developmental disabilities
in Calgary and ensuring that we
are able to participate in and
contribute to Calgary's culture.*

Warmly,

*Calgary Alternative
Support Services*

**TELUS
Spark***
THE NEW SCIENCE CENTRE

2015 Year in Review

Our Business

- Stable:
 - Students 71,000 in 2015
 - Membership 21,000
- Growth:
 - Attendance **7.8%** ↑ YOY despite economy
 - Facility Sales **2.1%** ↑ YOY: 202 private events
 - Social engagement (Klout) and Trip Advisor improvements
 - Invested in new visitor experiences
 - *Being Human* exhibits opening Oct 2016
 - *Brainasium* outdoor park, phase 2





Students took in 119,000 programs in 2015
50% of schools come year over year!



2015 Year in Review

Our Team

- Stable:
 - Operational stabilization in 4th year
 - Safety culture
- Growth:
 - Succession planning
 - Management development
 - Volunteer hours 45% ↑ (= 12 FTE)

25/05/2016



Looking Forward

To 2017: 50th Anniversary of the Centennial Planetarium, opened 1967

- Thank, engage and mobilize key stakeholders
- Reflect on 50 years of impact in our community
- Introduce TELUS Spark's long-range vision

25/05/2016



Research shows the importance of the family unit in STEM career choice



Looking Forward

To 2020: Sustainability

- Managing \$100,000,000 City of Calgary asset for \$2M per year
- 3rd party review of opportunities for expanded food services/catering, pre-school and adult learning infrastructure
 - Competitive Analysis
 - Market Analysis
 - Business Plan

25/05/2016



Adult learning at TELUS Spark: team builders, teacher training and innovation programs





SCHOOL *for*
INNOVATION
BY DESIGN



TELUS
Spark
THE NEW SCIENCE CENTRE

Looking Forward

To 2025: Long-Range Planning

- Social Impact Assessment
- **Community Listening Sessions**
- Vision & Strategic Framework

25/05/2016



