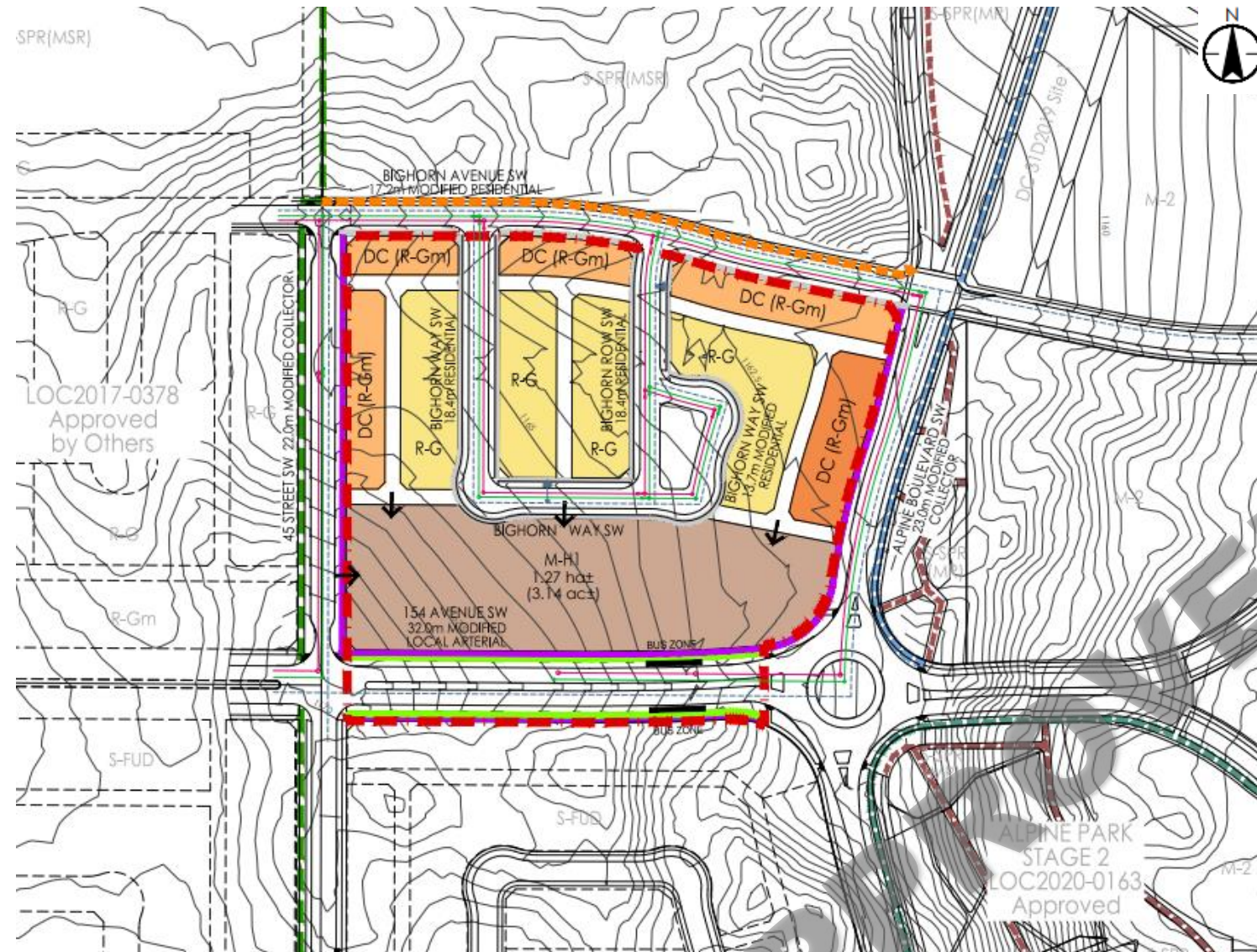


# Approved Outline Plan

Calgary Planning Commission is the Approving Authority for the Outline Plan. Attachment for Council's reference only.



OUTLINE PLAN STATISTICS			
TOTAL AREA OUTLINED	4.70 ha	11.61 ac	
GROSS DEVELOPABLE AREA (GDA)	4.70 ha	11.61 ac	100.0%
		Frontage	Units
<b>RESIDENTIAL</b>	2.94 ha	7.28 ac	62.7%
<b>Low Density</b>	1.67 ha	4.14 ac	35.7%
RG - 26m Vintage Wide Laned	0.96 ha	2.37 ac	356m 22 units
DC (R-Gm) - 17.5m	0.53 ha	1.30 ac	303m 46 units
DC (R-Gm) - 24.0m	0.19 ha	0.47 ac	78m 12 units
		Total frontage	737m
<b>Multi-Residential</b>	1.27 ha	3.14 ac	27.0%
M-H1	1.27 ha	3.14 ac	267 units 508 units
		Anticipated	347 units
		Maximum	642 units
<b>TOTAL UNITS</b>			Anticipated Maximum
<b>DENSITY</b>	Anticipated:	347 units 4.70 ha (11.61 ac)	Maximum: 642 units 4.70 ha (11.61 ac)
		= 73.8 upha = 29.9 upac	= 136.7 upha = 55.3 upac
<b>PUBLIC DEDICATION</b>	1.76 ha	4.33 ac	37.3%
Roads and Lanes	1.76 ac	4.33 ac	37.3%



LAND USE STATISTICS		
M-H1 to R-G	0.42 ha	1.05 ac
DC 31D2019 Site 1 to R-G	0.01 ha	0.03 ac
DC 31D2019 Site 1 to DC (R-Gm)	1.11 ha	2.75 ac
M-H1 to DC (R-Gm)	0.06 ha	0.14 ac
R-G to DC (R-Gm)	0.29 ha	0.72 ac
<b>Total Redesignation</b>	<b>1.90 ha</b>	<b>4.69 ac</b>
R-G to Remain R-G	1.29 ha	3.18 ac
M-H1 to Remain M-H1	1.96 ha	4.85 ac

## Legend

- Outline Plan Boundary
- Land Use Redesignation Boundary
- 1.5m Mono Sidewalk
- 1.5m Separate Sidewalk
- 2.0m Separate Sidewalk
- 2.0m Off-Street Bike Lane
- Local Pathway
- 2.5m Local Pathway
- 3.0m Regional Pathway
- 3.0m Multi-Use Pathway
- Proposed Access Locations
- Proposed Sanitary Sewer/Manhole
- Proposed Storm Sewer/Manhole
- Proposed Water Main

## Notes

- All residential roads are intended to be 18.4m Residential standards unless otherwise noted.
- All walkways are intended to be 3.0m in width. Where these are required for underground utilities or overland drainage, the appropriate easements will be provided.
- All lanes are 7m unless otherwise noted.
- All lane corners are to be 3m x 3m.
- All road corners are to be 4.5m x 4.5m.
- Street light cables to be located in joint shallow utilities trench where appropriate. To be confirmed at subdivision.

