



Public Hearing of Council

Agenda Item: 7.2.9



LOC2023-0351 / CPC2024-0214

Land Use Amendment

April 9, 2024

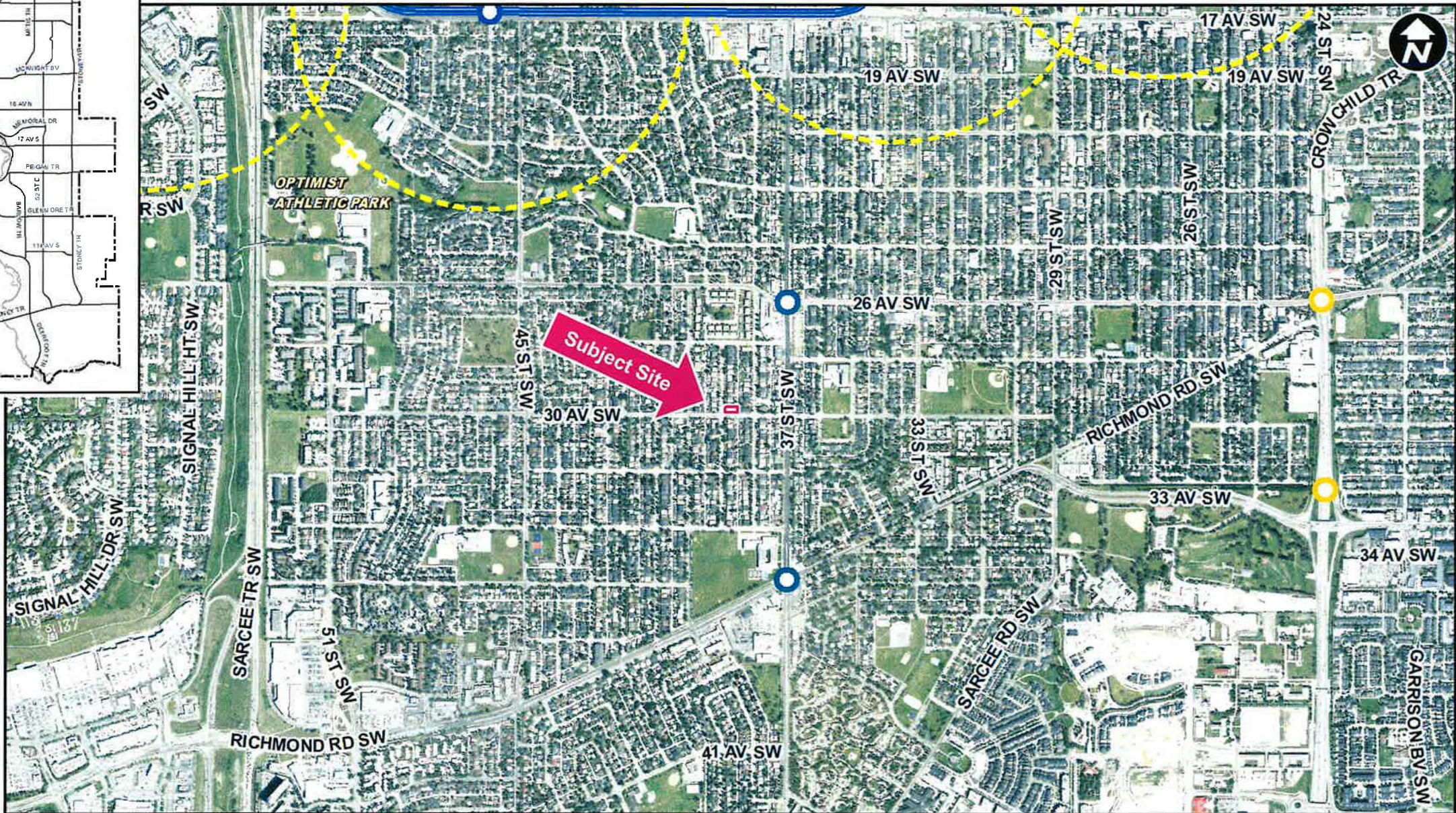
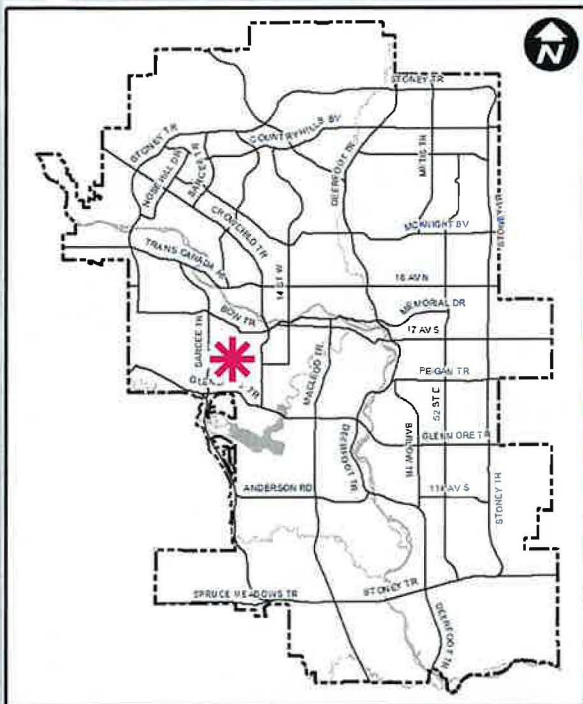
CITY OF CALGARY
RECEIVED
IN COUNCIL CHAMBER
APR 09 2024
ITEM: 7.2.9 CPC2024-0214
DISTRIB - PRESENTATION
CITY CLERK'S DEPARTMENT

Calgary Planning Commission's Recommendation:

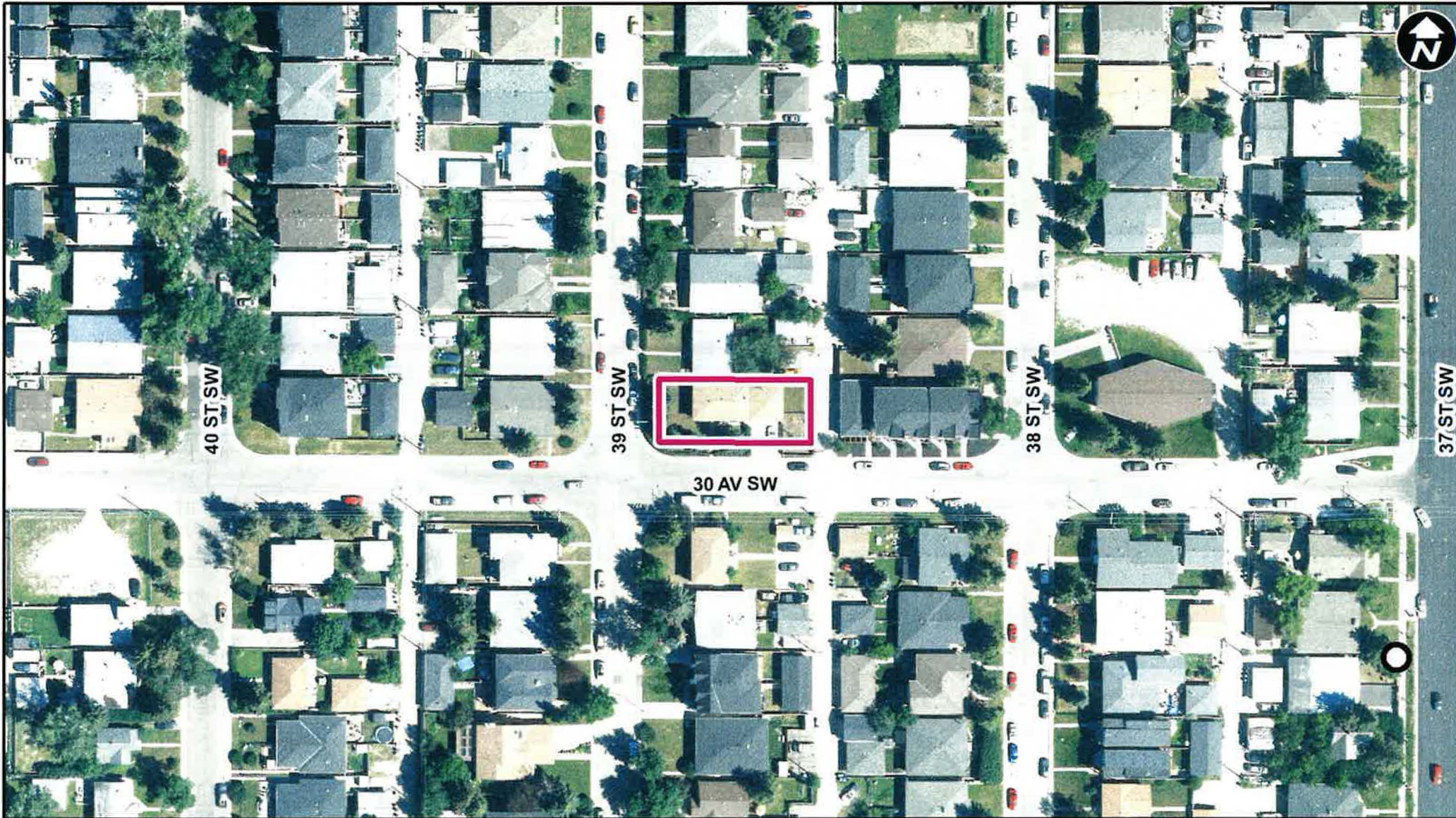
That Council:

Give three readings to **Proposed Bylaw 106D2024** for the redesignation of 0.06 hectares ± (0.14 acres ±) located at 3916 – 30 Avenue SW (Plan 1365AH, Block 31, Lots 51 and 52) from Residential – Contextual One / Two Dwelling (R-C2) District to Residential – Grade-Oriented Infill (R-CG) District.





- LEGEND**
- 600m buffer from LRT station
 - LRT Stations**
 - Blue
 - Downtown
 - Red
 - Green (Future)
 - LRT Line**
 - Blue
 - Blue/Red
 - Red
 - Max BRT Stops**
 - Orange
 - Purple
 - Teal
 - Yellow



- LEGEND**
- 600m buffer from LRT station
 - LRT Stations**
 - Blue
 - Downtown
 - Red
 - Green (Future)
 - LRT Line**
 - Blue
 - Blue/Red
 - Red
 - Max BRT Stops**
 - Orange
 - Purple
 - Teal
 - Yellow
 - Bus Stop

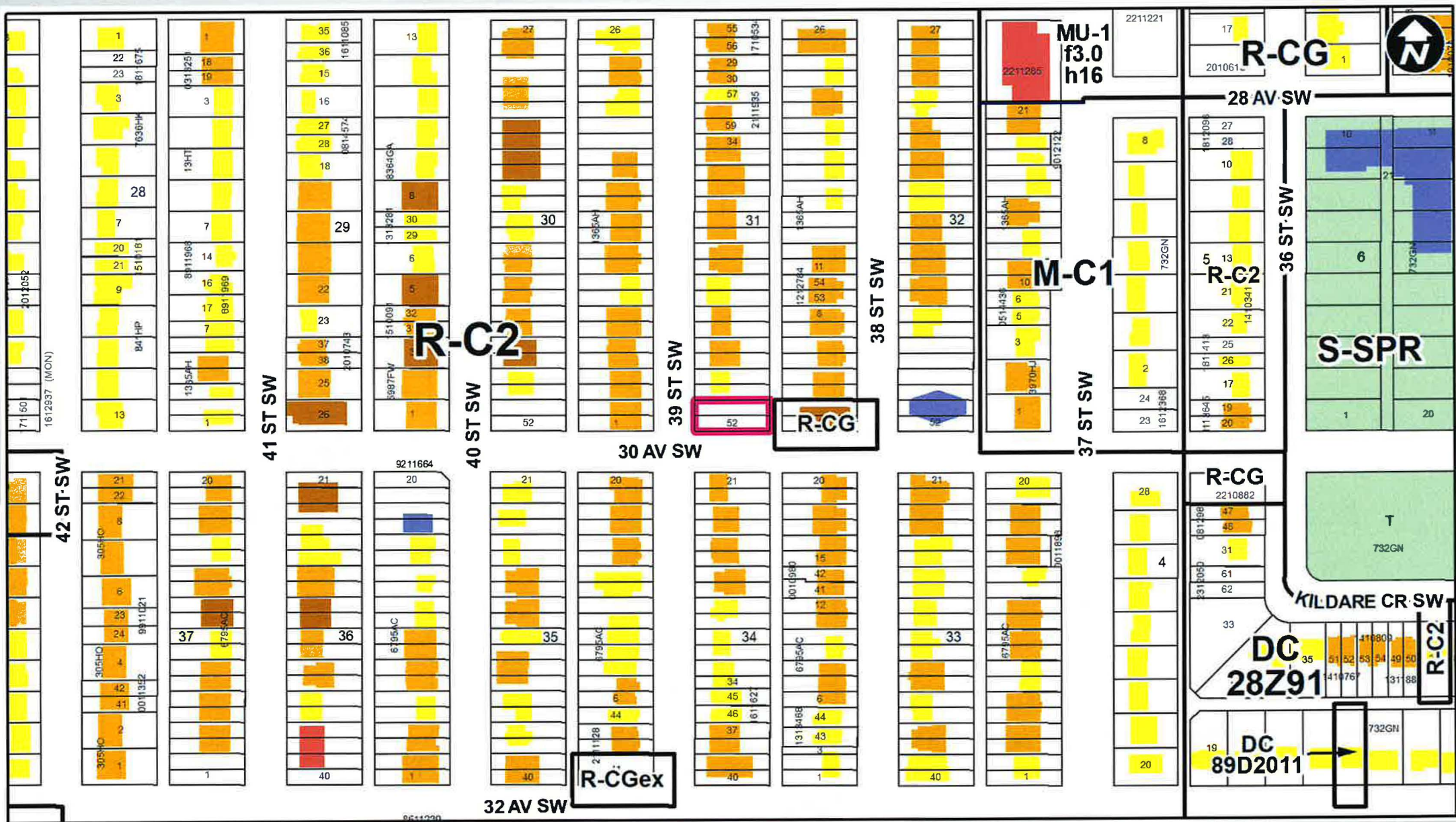
Parcel Size:

0.06 ha
37m x 15m

Surrounding Land Use

LEGEND

- Single detached dwelling
- Semi-detached / duplex detached dwelling
- Rowhouse / multi-residential
- Commercial
- Heavy Industrial
- Light Industrial
- Parks and Openspace
- Public Service
- Service Station
- Vacant
- Transportation, Communication, and Utility
- Rivers, Lakes
- Land Use Site Boundary



Proposed Land Use Map



Proposed Residential – Grade-Oriented Infill (R-CG) District:

- Accommodates rowhouses, townhouses, single detached and semi-detached housing
- Maximum building height of 11 metres (approximately 3 storeys)
- Maximum density of 75 units per hectare (4 units), plus secondary suites

Calgary Planning Commission's Recommendation:

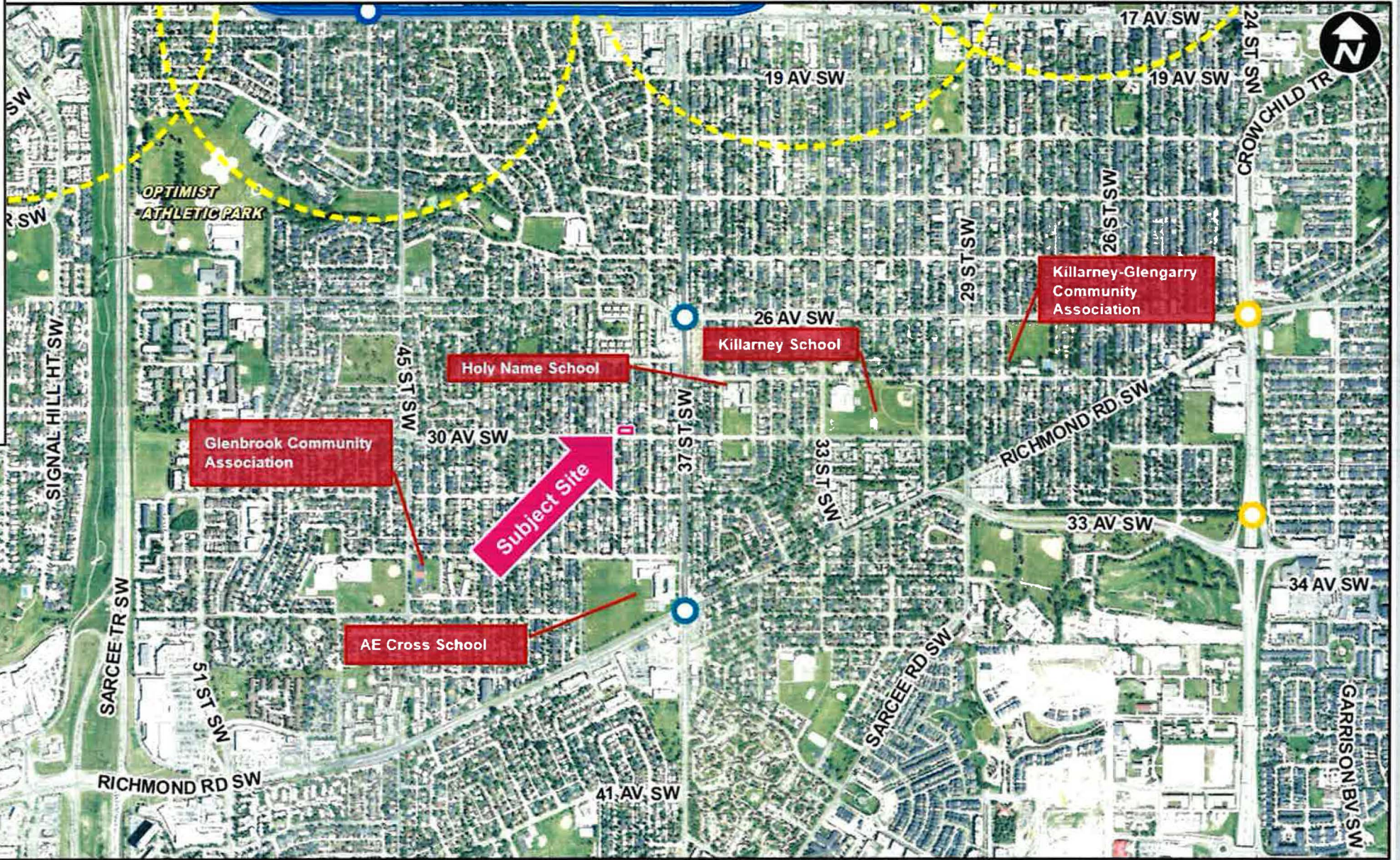
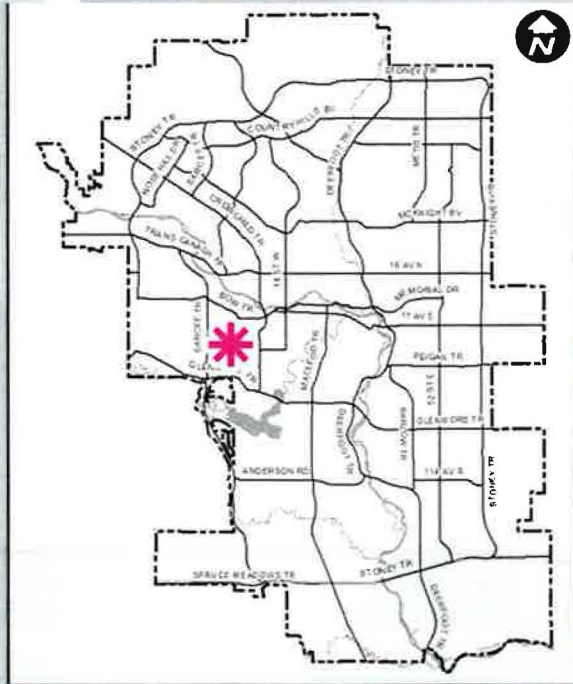
That Council:

Give three readings to **Proposed Bylaw 106D2024** for the redesignation of 0.06 hectares \pm (0.14 acres \pm) located at 3916 – 30 Avenue SW (Plan 1365AH, Block 31, Lots 51 and 52) from Residential – Contextual One / Two Dwelling (R-C2) District to Residential – Grade-Oriented Infill (R-CG) District.

Supplementary Slides

Existing Land Use Map





- LEGEND**
- 600m buffer from LRT station
 - LRT Stations**
 - Blue
 - Downtown
 - Red
 - Green (Future)
 - LRT Line**
 - Blue
 - Blue/Red
 - Red
 - Max BRT Stops**
 - Orange
 - Purple
 - Teal
 - Yellow

