

Wastewater Servicing Extension Request

February 1, 2024

The City of Calgary
P.O Box 2100, Stn. M
Calgary, AB T2P 2M5

Attention: Director of Water Services, City of Calgary

Dear Nancy Mackay:

RE: Request for Extension of Wastewater Servicing to Harmony Franchise Area

INTENT

As per The City of Calgary's (The City's) Policy on Water, Wastewater and Stormwater Servicing (CP2018-01) (The Policy), the Town of Cochrane (Cochrane) is formally requesting a revision to the existing Master Servicing Agreement (MSA) to expand The City's wastewater servicing capacity to Cochrane to include an additional service area to the agreement. This area is within Rocky View County and is known as the Harmony Franchise area, owned and operated by HAWSCo. The Town of Cochrane is currently in the process of designing the first of 5 phases of the wastewater disposal system expansion in order to support its own growth and the Phase 1 expansion is slated to be in constructed by 2027. Therefore, Cochrane is currently in a position to provide system capacity to Harmony Franchise Area while design is underway.

BACKGROUND

Cochrane's wastewater system currently collects sewage from within the town boundary, discharges into The City's gravity sewer system and is governed by the existing MSA. Twinning the wastewater pipeline to accommodate Cochrane's growth has been a key component of Cochrane's long term sewer strategy, and this infrastructure expansion now also provides the opportunity to extend servicing to neighbouring subregions facing servicing constraints which enables cost sharing and enhanced environmental protection as a result.

The "CHRC" subregional working group, representing Cochrane, Harmony Advanced Water System Co (HAWSCo), Rocky View County (RVC) and The City, was formed to begin investigating potential shared servicing options for the subregion's wastewater needs in an effort to collaborate to achieve common objectives. In tandem with the technical analysis of these options (summarized in the appended *CHRC West Sub-regional Wastewater Feasibility Study – Report 1: Options Analysis*) the group's multiple-account review demonstrated that a sub-regional solution was the preferred option. The proposed sub-regional system reviewed the feasibility of servicing the estimated build-out populations of the Cochrane Lake community and the HAWSCo Franchise Area, in addition to significant growth for Cochrane long term. The system proposes to collect wastewater flows from these areas and ultimately discharge them into The City's gravity collection system.

REQUEST

Additional servicing capacity will be needed to support growth primarily for the Town of Cochrane, however additional flows will be contributed by Rocky View County (from Harmony Franchise Area) as well. Although the feasibility study included evaluating Cochrane Lake buildout, no additional servicing beyond the existing MSA is currently being requested from Rocky View County for Cochrane Lake at this time. The existing MSA between

The City and Cochrane, which is amended on a four-year basis, will ultimately cover the servicing area and capacity of Cochrane, as this continues to increase over the next 35 years. Therefore, the area and corresponding peak flow (and estimated population equivalent) that are being requested to be added to Cochrane's MSA by The City are summarized in **Table 1**. This information can be further referenced in the appended report, *CHRC West Sub-regional Wastewater Feasibility Study – Report 1 – Options Analysis*, in Sections 2.4 and 2.6.

Table 1: Requested Additional Populations and Peak Flows

Service Region	Gross Area	Estimated Population Equivalent	Peak Wastewater Flow Requested
Harmony Franchise Area	~ 1,277 ha	24,618	105 L/s ^{1,2}

1. This peak flow is the flow that exceeds the current Harmony peak treatment capacity. The Harmony treatment plant will remain in service to provide treated effluent as source water for irrigation.
2. The Harmony Franchise Area peak design wastewater flowrate for the proposed system can be further referenced in the appended report, Table 2-11 and Appendix B.

The population and peak flowrates of the Harmony Franchise Area correlate to the service areas shown in green in Figure 1.

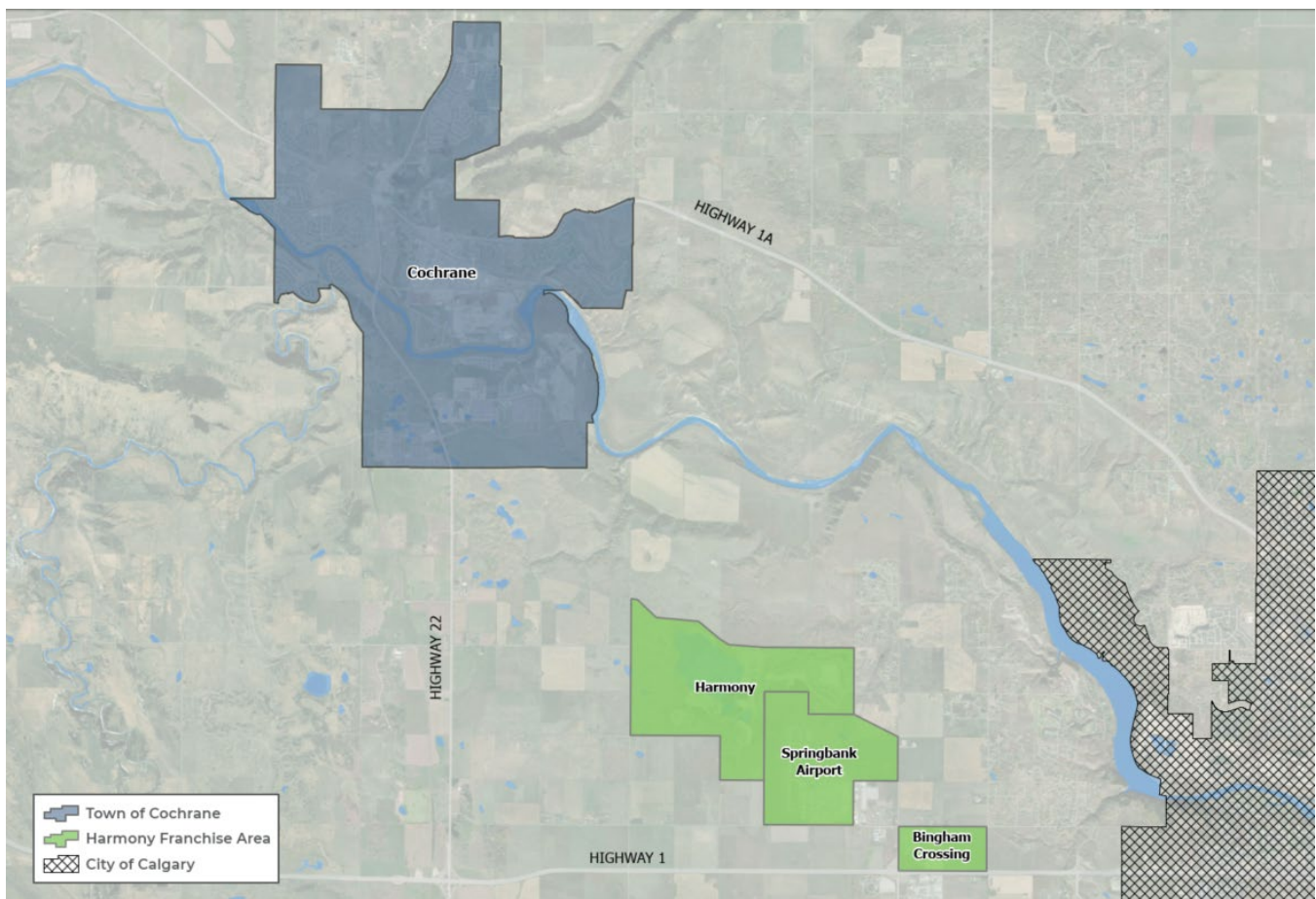


Figure 1 – Town of Cochrane and Requested Harmony Franchise Service Area

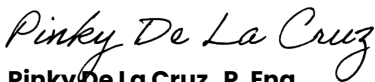
In the event that The City's sewer system requires maintenance or experiences a service outage and is ultimately unable to receive flows from Cochrane's wastewater pipeline, interim measures to store and/or treat wastewater will be in place. Both Cochrane's and Harmony's systems currently have forms of storage capable of receiving wastewater for a duration of time in the event of an emergency, however additional redundancy measures and plans for alternate servicing will be determined in the subsequent design and planning phases.

Hydrographs of the totalized peak flows (for the full potential subregional buildout as projected in the appended Report) over the next 50 years were provided to The City in August 2023 to understand the impacts that the additional flows may have on The City's infrastructure upgrade plans. No impacts were identified by The City modellers; however, it should be noted that these flows were based on and extrapolated from flowrates measured every five minutes for a year (in 2022), and it is recommended that additional work be done to capture a broader window of flow conditions to ensure that peak weather events are being reflected in the modelling process.

This letter serves as a formal request to The City for the expansion of Cochrane's MSA to include the proposed additional service areas to facilitate the sub-regional system proposed. Appended to this letter are supporting requests from Rocky View County (RVC) and HAWSCo. Additionally, the Conservation & Reclamation Plan for the project has been provided for additional information (and is expected to be updated in June, 2024). The sub-regional system will not only support continued subregional growth and foster inter-municipal relationships but will do so in a way that is in alignment with The Policy, minimizing impacts to The City's infrastructure and future investments, and maintaining protection of The City's raw water sources.

We trust that the information provided within this letter and its appendices is complete and accurate to facilitate consideration of the proposed agreement, and Cochrane will provide any additional information that may be required to support its acceptance.

Sincerely,



Pinky De La Cruz P. Eng.

Director, Engineering & Asset Services, Development & Infrastructure Services

Town of Cochrane

/AJ

Enclosure - Letter of Support for Cochrane's Request for Extension of
Wastewater Servicing to HAWSCo Franchise Area in Rocky View County

cc: Drew Hyndman, Executive Director of Development and Infrastructure Services – Town of Cochrane

Town of Cochrane
101 Ranchehouse Rd,
Cochrane, AB,
Canada T4C 2K8

Attention: Pinky De La Cruz; Director, Engineering & Asset Services

RE: Letter of Support for Cochrane's Request for Extension of Wastewater Servicing to HAWSCO Franchise Area in Rocky View County

BACKGROUND

The "CHRC" subregional working group, representing the Town of Cochrane, Harmony Advanced Water System Co (HAWSCO), Rocky View County and the City of Calgary, was formed to begin investigating potential shared servicing options for the subregion's wastewater needs in an effort to collaborate to achieve common objectives. In tandem with the technical analysis of these options (summarized *CHRC West Sub-regional Wastewater Feasibility Study – Report 1: Options Analysis, Urban Systems 2023*) the group's multiple-account review demonstrated that a sub-regional solution was the preferred option. The preferred option proposes that the HAWSCO franchise area be serviced (over and above the existing capacity of Harmony's wastewater treatment system) by Cochrane's existing and future twinned disposal system which ultimately discharges into Calgary's gravity collection system.

REQUEST

HAWSCO supports Cochrane's request to add the HAWSCO Franchise Area, summarized by the estimated population equivalents and peak flows in **Table 1** to Cochrane's MSA with the City of Calgary. Additional supporting information on the projections found in the appended report.

Table 1: Requested Additional Populations and Peak Flows

Service Region	Gross Area	Estimated Population Equivalent	Peak Wastewater Flow Requested
HAWSCO Franchise Area	~1,277 ha	24,672	105 L/s ¹

1. This peak flow is the flow that exceeds the current Harmony peak treatment capacity. The Harmony treatment plant will remain in service to provide treated effluent as source water for Irrigation.

The population and peak flow rates of the Harmony Franchise Area correlate to the service areas shown in green in Figure 1.

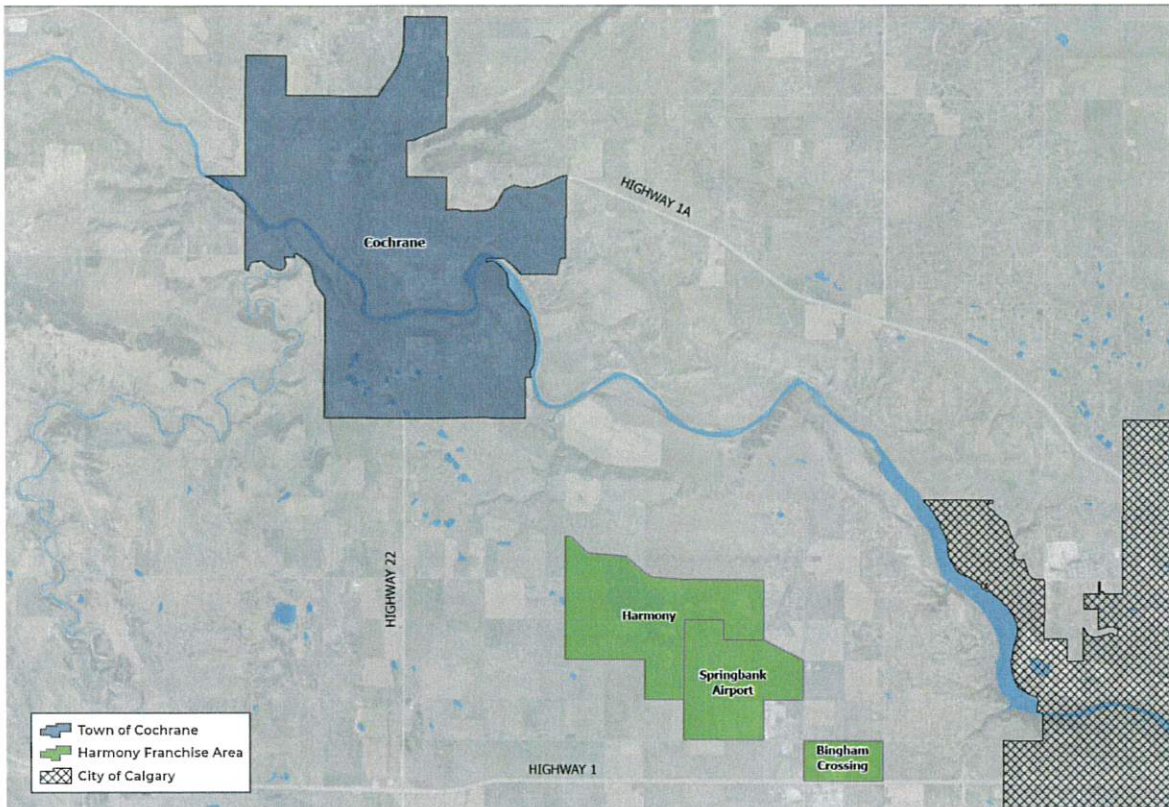


Figure 1 – Town of Cochrane and Requested HAWSCO Franchise Service Area

This letter serves as formal support to the Town of Cochrane in requesting to expand its MSA to include the proposed additional service areas to facilitate the sub-regional system proposed. The sub-regional system will not only support continued subregional growth and foster inter-municipal relationships but will do so in a way that is in alignment with the City of Calgary's wastewater servicing policy, minimizing impacts to the City's infrastructure and future investments, and maintaining protection of the City's raw water sources.

Sincerely,

Birol Fisekci
Harmony Project Manager
Bordeaux Developments | HAWSCO

Enclosure

cc:
WILLIE MILLER Development Manager HASWCO
ANGELA YURKOWSKI Associate Director Development HDI
MEGAN VAN HAM Leader, Regional and Flood Programs, Watershed Planning **The City of Calgary**
LEIGH CHMILAR, P.ENG. Water / Wastewater Engineer | Principal Urban Systems