

Development Permit (DP2022-08512) Summary

The following excerpts (Figures 1-2) from the development permit application provide an overview of the proposal and are included for information purposes only. DP2022-08512 proposes a 28-unit townhouse development incorporating the road closure area with the adjacent parcel of land. The proposed building height is 12.26 m.

Figure 1: Landscaping Plan

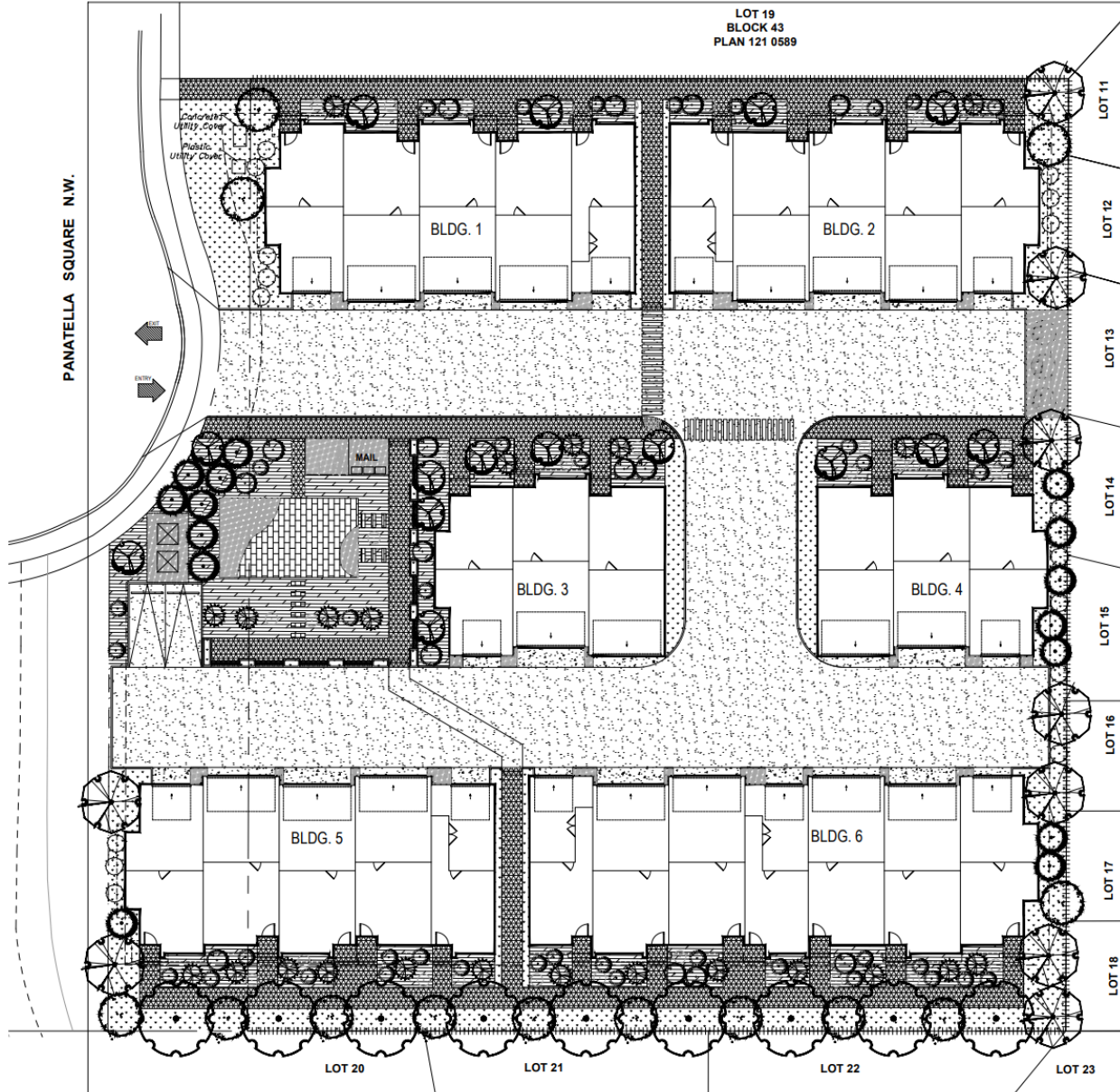


Figure 2: Typical Building Elevation

