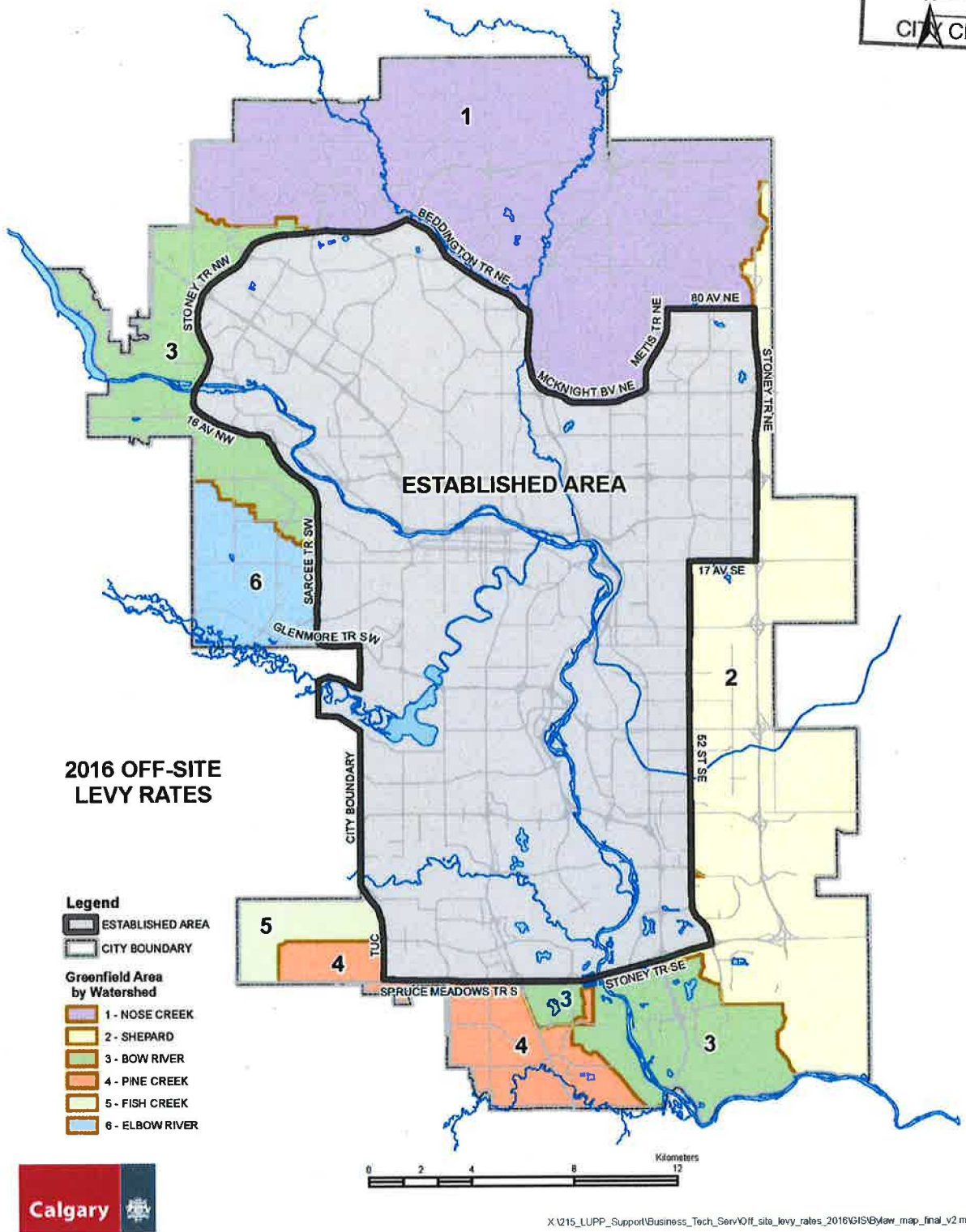


CITY OF CALGARY
RECEIVED
IN COUNCIL CHAMBER

JAN 11 2016
ITEM: C2016-0023
Admin
CITY CLERK'S DEPARTMENT

Greenfield Area

Established Area



Greenfield Area Levy Rate by Watershed
(\$/ha)

1 Nose Creek Watershed	\$433,398
2 Shepard Watershed	\$464,777
3 Bow River Watershed	\$429,056
4 Pine Creek Watershed	\$438,885
5 Fish Creek Watershed	\$422,073
6 Elbow River Watershed	\$422,073

Maximum Rate for Density ≥ 285 Equivalent
Population/Hectare: \$615,885/Ha

Residential Levy Rate
(\$/Unit)

Single Detached	\$6,267
Semi-Detached/Duplex	\$5,619
Multi-residential Grade-Oriented	\$3,890
Multi-residential Non Grade-Oriented (2 bedroom or more)	\$3,242
Multi-residential Non Grade-Oriented (1 bedroom or less)	\$2,593

Greenfield Area Components
(\$/ha)

Transportation	\$136,789
Water and Wastewater	
Linear	\$76,774
Water and Wastewater	
Treatment	\$129,660
Drainage by Watershed	
1 Nose Creek Watershed	\$11,325
2 Shepard Watershed	\$42,704
3 Bow River Watershed	\$6,983
4 Pine Creek Watershed	\$16,812
5 Fish Creek Watershed	\$0
6 Elbow River Watershed	\$0

Non-Residential Levy Rate
(\$/m2 Gross Floor Area)

Commercial Development Levy Rate	\$36.62
Industrial Development Levy Rate	\$17.58

Water Resources \$206,434 to \$249,138

Off-site Levy Total \$343,223 to \$385,927

Community Services
Charge

Calgary Fire Department	\$19,545
Calgary Public Library	\$5,971
Calgary Police Service	\$7,648
Recreation	\$41,679
Calgary Transit	\$4,007

Community Services

Charge Total \$78,850

Total Greenfield Off-site

Levy and Community Service Charge \$422,073 to \$464,777