



LOC2023-0162 / CPC2023-1237

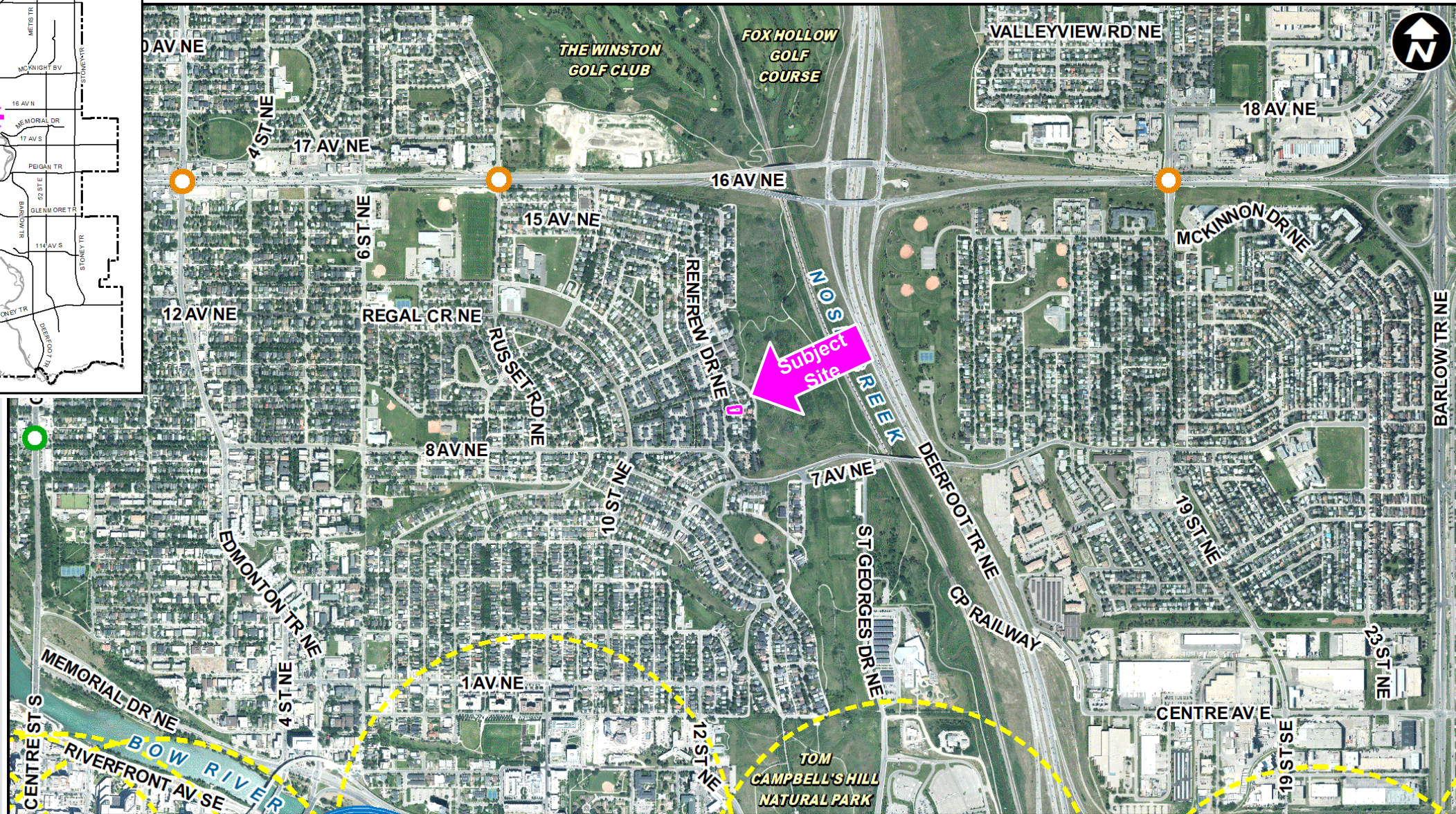
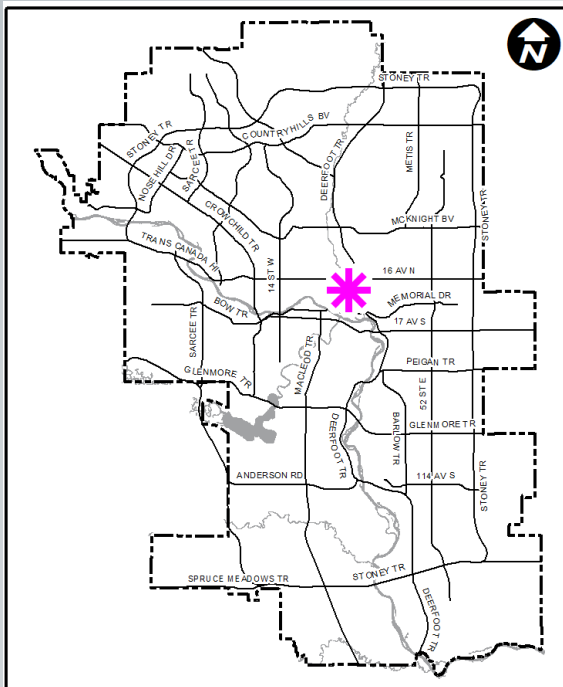
Land Use Amendment

February 6, 2024

Calgary Planning Commission's Recommendation:

That Council:

Give three readings to **Proposed Bylaw 49D2024** for the redesignation of 0.07 hectares \pm (0.17 acres \pm) located at 928 Renfrew Drive NE (Plan 1838GT, Block 3, Lot 7) from Residential – Contextual One / Two Dwelling (R-C2) District **to** Residential – Grade-Oriented Infill (R-CG) District.



LEGEND

600m buffer from LRT station

LRT Stations

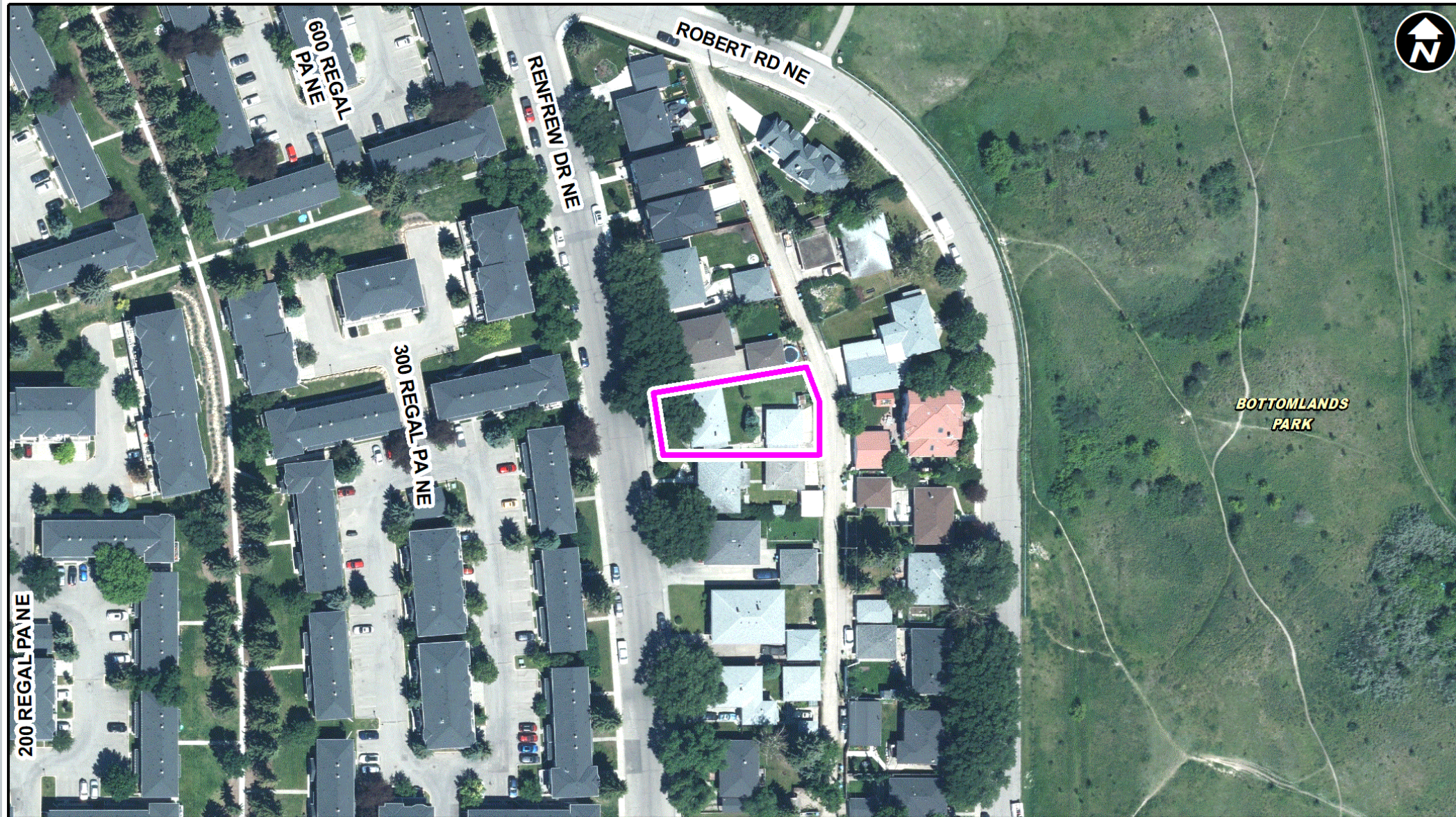
- Blue
- Downtown
- Red
- Green (Future)

LRT Line

- Blue
- Blue/Red
- Red

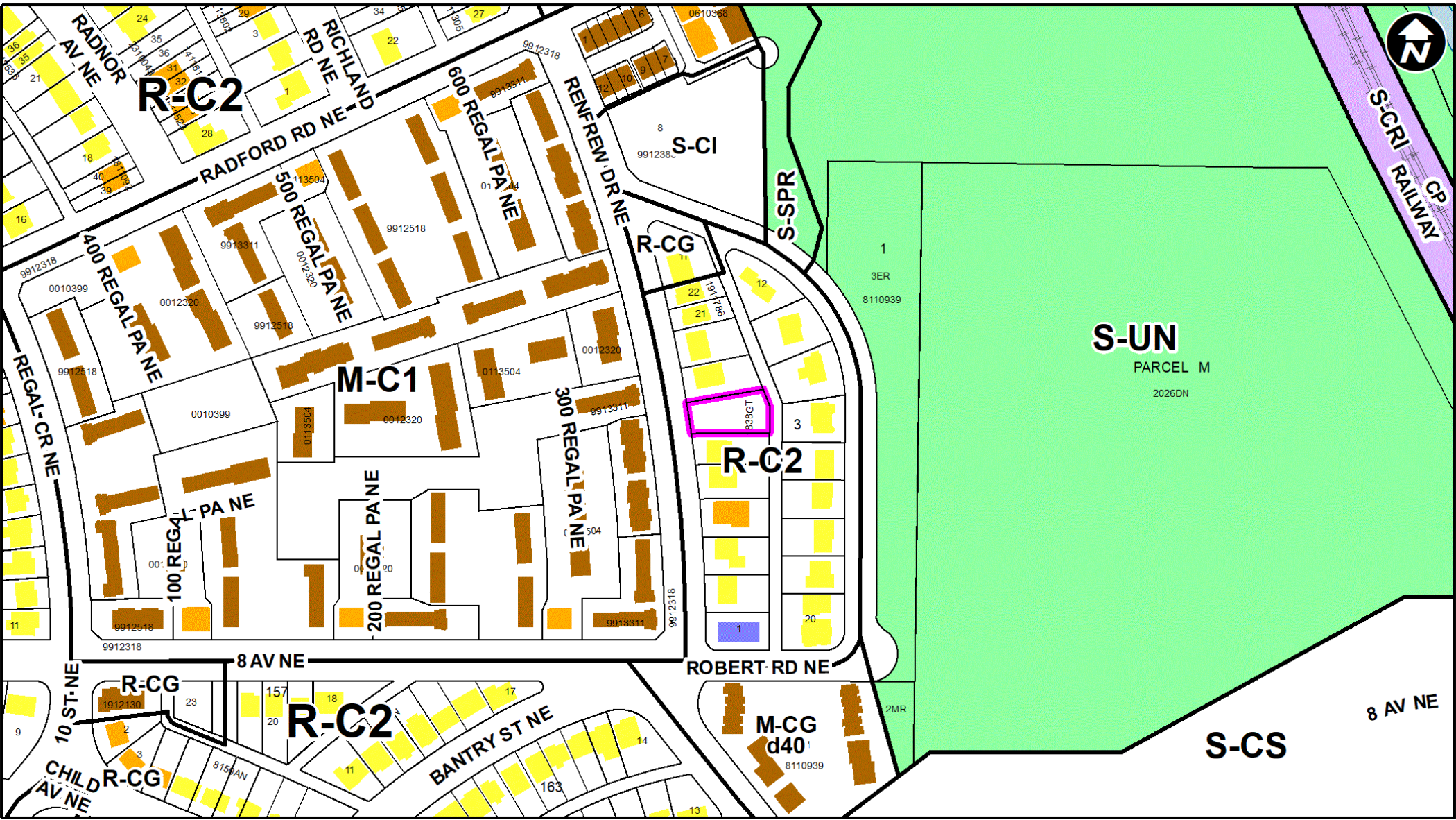
Max BRT Stops

- Orange
- Purple
- Teal
- Yellow

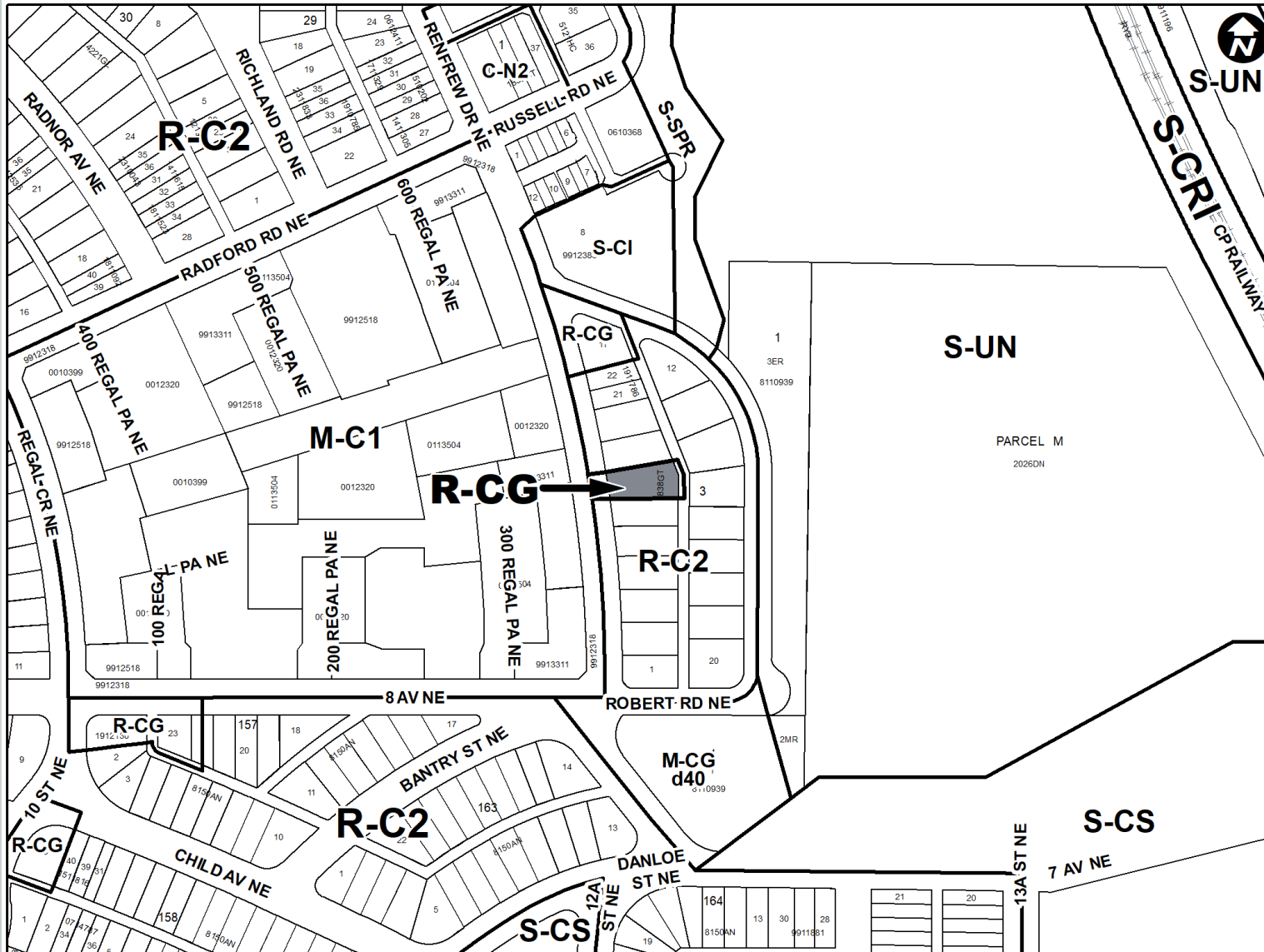


Parcel Size:

± 0.07 ha
± 15m x 37m



- LEGEND**
- Single detached dwelling
 - Semi-detached / duplex detached dwelling
 - Rowhouse / multi-residential
 - Commercial
 - Heavy Industrial
 - Light Industrial
 - Parks and Openspace
 - Public Service
 - Service Station
 - Vacant
 - Transportation, Communication, and Utility
 - Rivers, Lakes
 - Land Use Site Boundary



Proposed Residential – Grade-Oriented Infill (R-CG) District:

- accommodates grade-oriented developments in a variety of forms including rowhouses
- maximum building height of 11 metres
- maximum density is 75 units per hectare (5 dwelling units)

Calgary Planning Commission's Recommendation:

That Council:

Give three readings to **Proposed Bylaw 49D2024** for the redesignation of 0.07 hectares \pm (0.17 acres \pm) located at 928 Renfrew Drive NE (Plan 1838GT, Block 3, Lot 7) from Residential – Contextual One / Two Dwelling (R-C2) District **to** Residential – Grade-Oriented Infill (R-CG) District.

Supplementary Slides







