

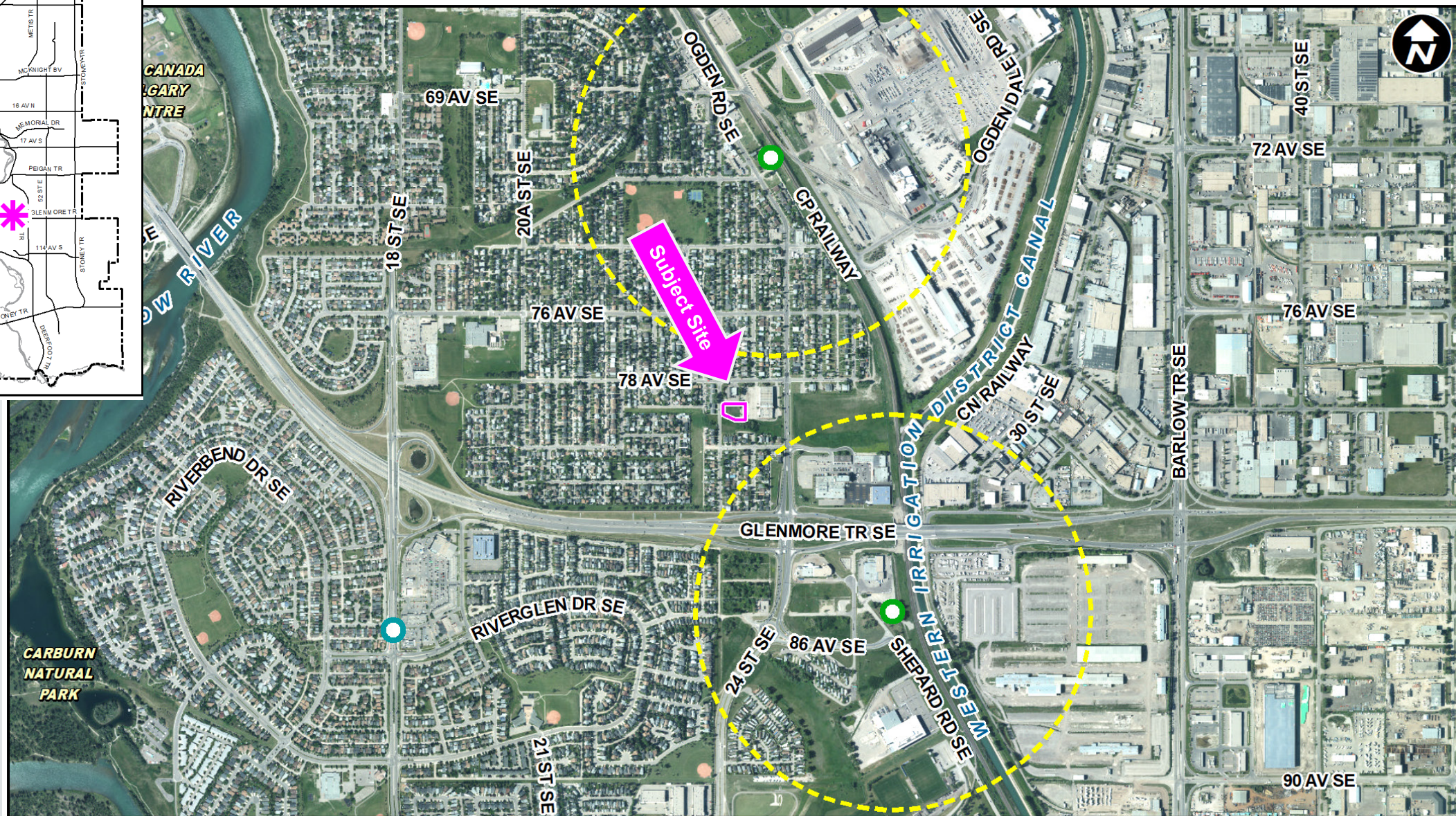
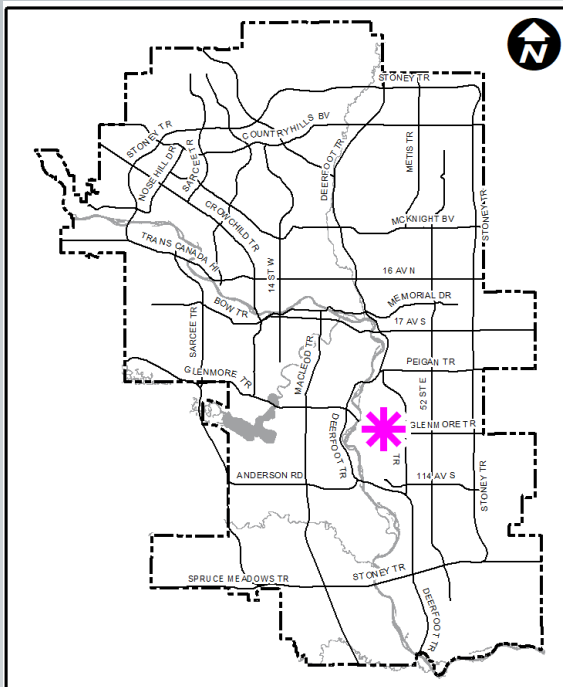
LOC2023-0197 / CPC2023-0949 Policy and Land Use Amendment

February 6, 2024

Calgary Planning Commission's Recommendation:

That Council:

1. Give three readings to **Proposed Bylaw 5P2024** for the amendments to the Millican-Ogden Area Redevelopment Plan (Attachment 2); and
2. Give three readings to **Proposed Bylaw 36D2024** for the redesignation of 0.30 hectares \pm (0.70 acres \pm) located at 7820 – 24 Street SE (Plan 0110196, Block 29) from Direct Control (DC) District **to** Multi-Residential – High Density Low Rise (M-H1) District.



LEGEND

600m buffer from LRT station

LRT Stations

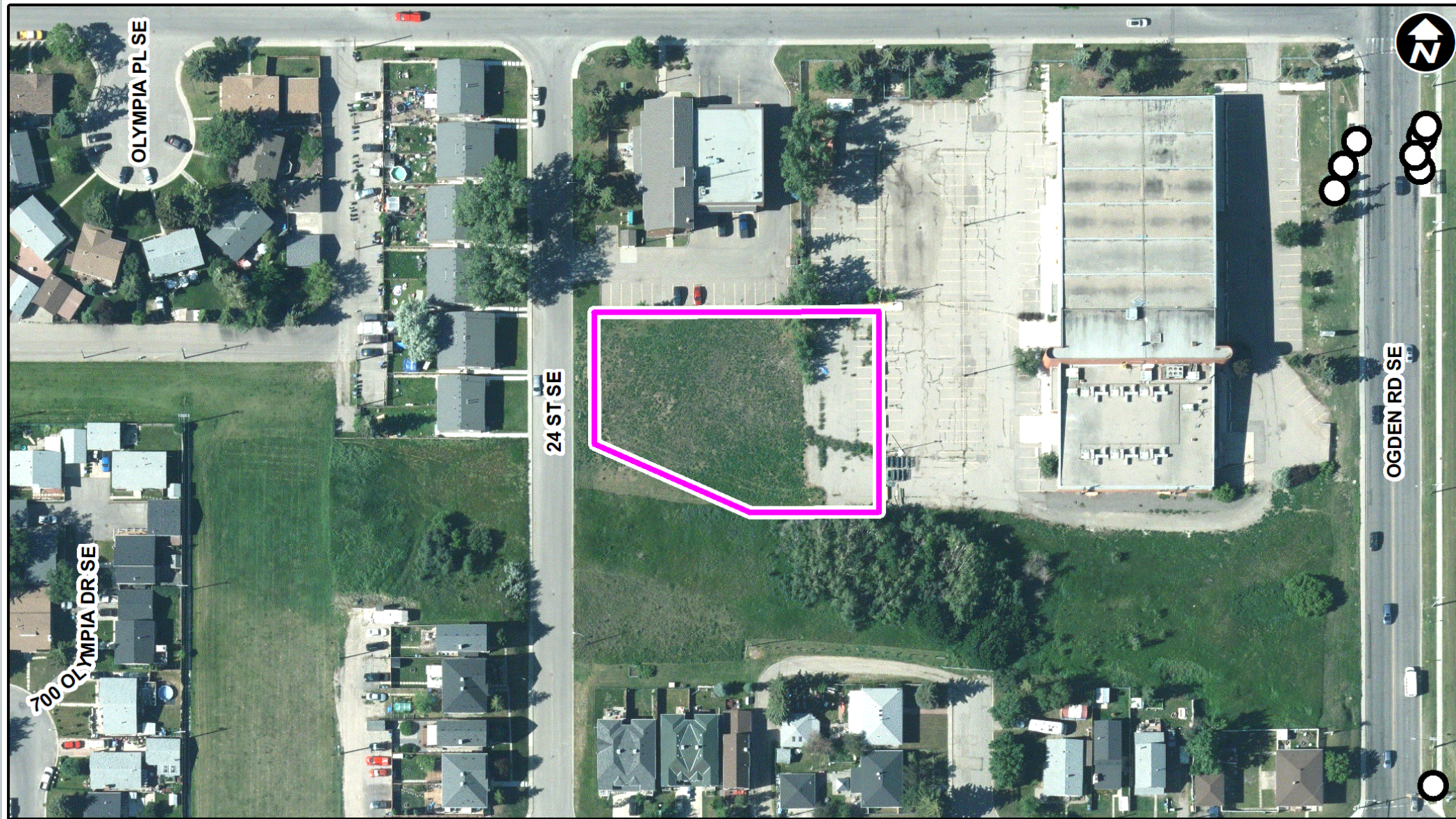
- Blue
- Downtown
- Red
- Green (Future)

LRT Line

- Blue
- Blue/Red
- Red

Max BRT Stops

- Orange
- Purple
- Teal
- Yellow

**LEGEND**

600m buffer from LRT station

LRT Stations

- Blue
- Downtown
- Red
- Green (Future)

LRT Line

- Blue
- Blue/Red
- Red

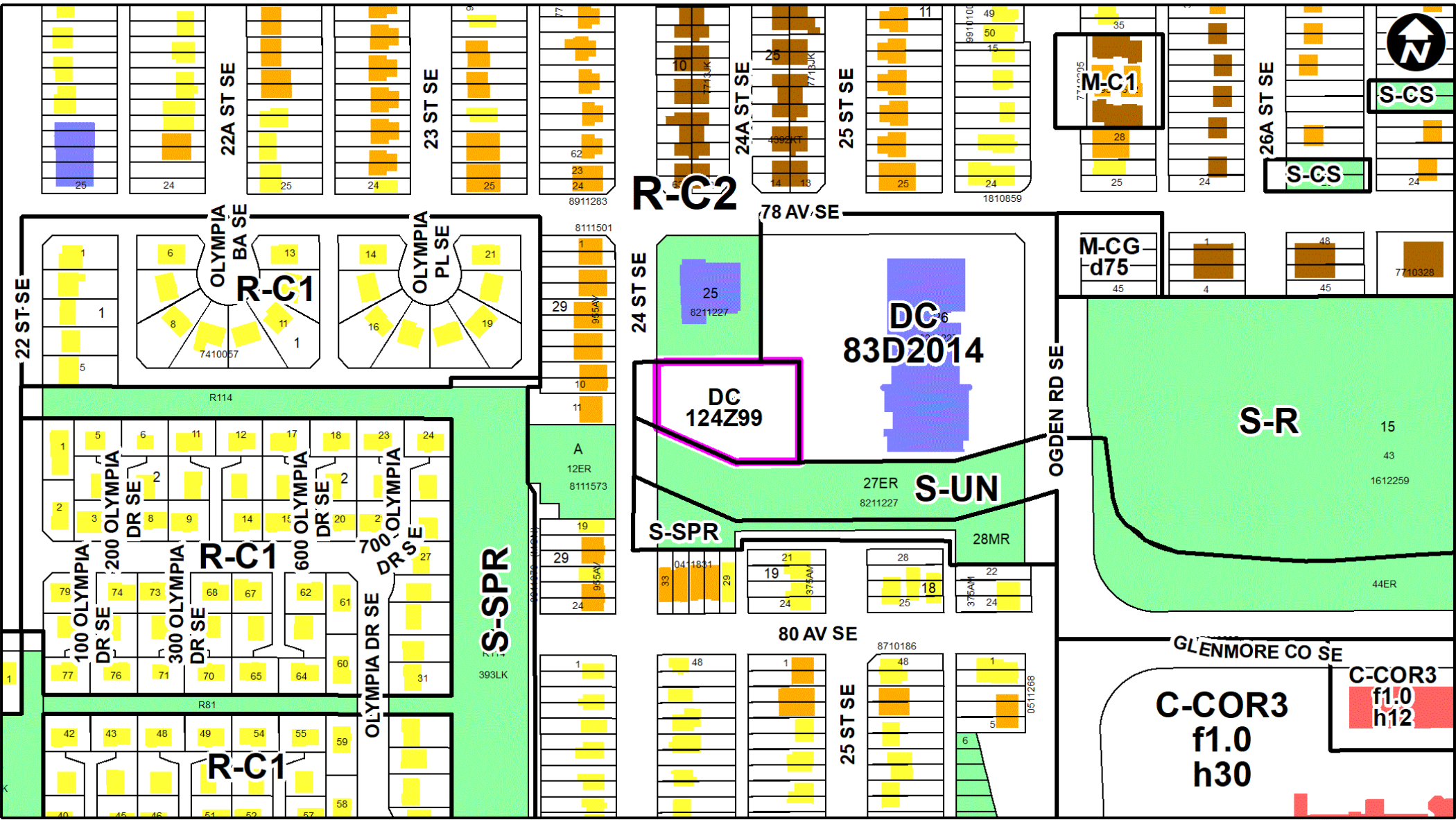
Max BRT Stops

- Orange
- Purple
- Teal
- Yellow

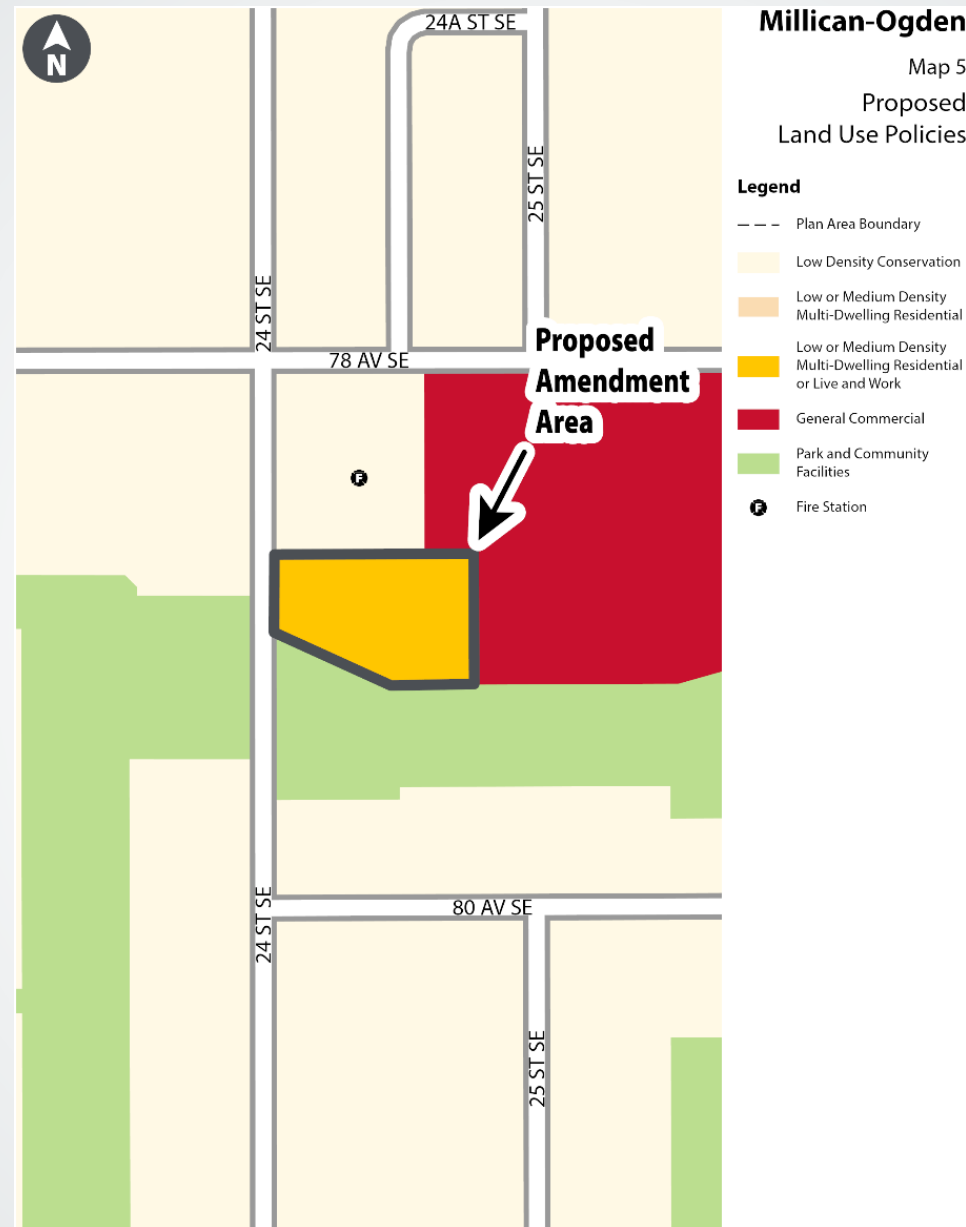
Bus Stop

Parcel Size:

0.3 ha
70m x 40m



- LEGEND**
- Single detached dwelling
 - Semi-detached / duplex detached dwelling
 - Rowhouse / multi-residential
 - Commercial
 - Heavy Industrial
 - Light Industrial
 - Parks and Openspace
 - Public Service
 - Service Station
 - Vacant
 - Transportation, Communication, and Utility
 - Rivers, Lakes
 - Land Use Site Boundary



Proposed Amendments:

- Map Amendment to change subject site to “Low or Medium Density Multi-Dwelling Residential or Live and Work”
- Text Amendment to recognize the density allotted through the M-H1 District, as well as commercial uses at grade

Calgary Planning Commission's Recommendation:

That Council:

1. Give three readings to **Proposed Bylaw 5P2024** for the amendments to the Millican-Ogden Area Redevelopment Plan (Attachment 2); and
2. Give three readings to **Proposed Bylaw 36D2024** for the redesignation of 0.30 hectares \pm (0.70 acres \pm) located at 7820 – 24 Street SE (Plan 0110196, Block 29) from Direct Control (DC) District **to** Multi-Residential – High Density Low Rise (M-H1) District.

Supplementary Slides







