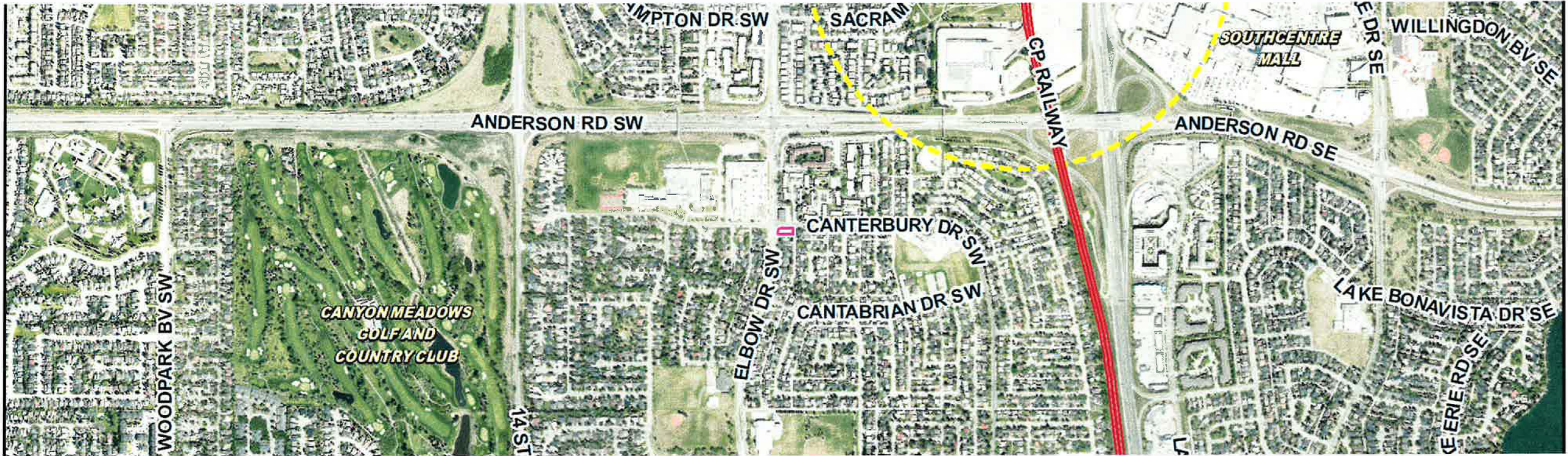




Public Hearing of Council

Agenda Item: 7.2.32



LOC2022-0179 / CPC2023-1018

Land Use Amendment

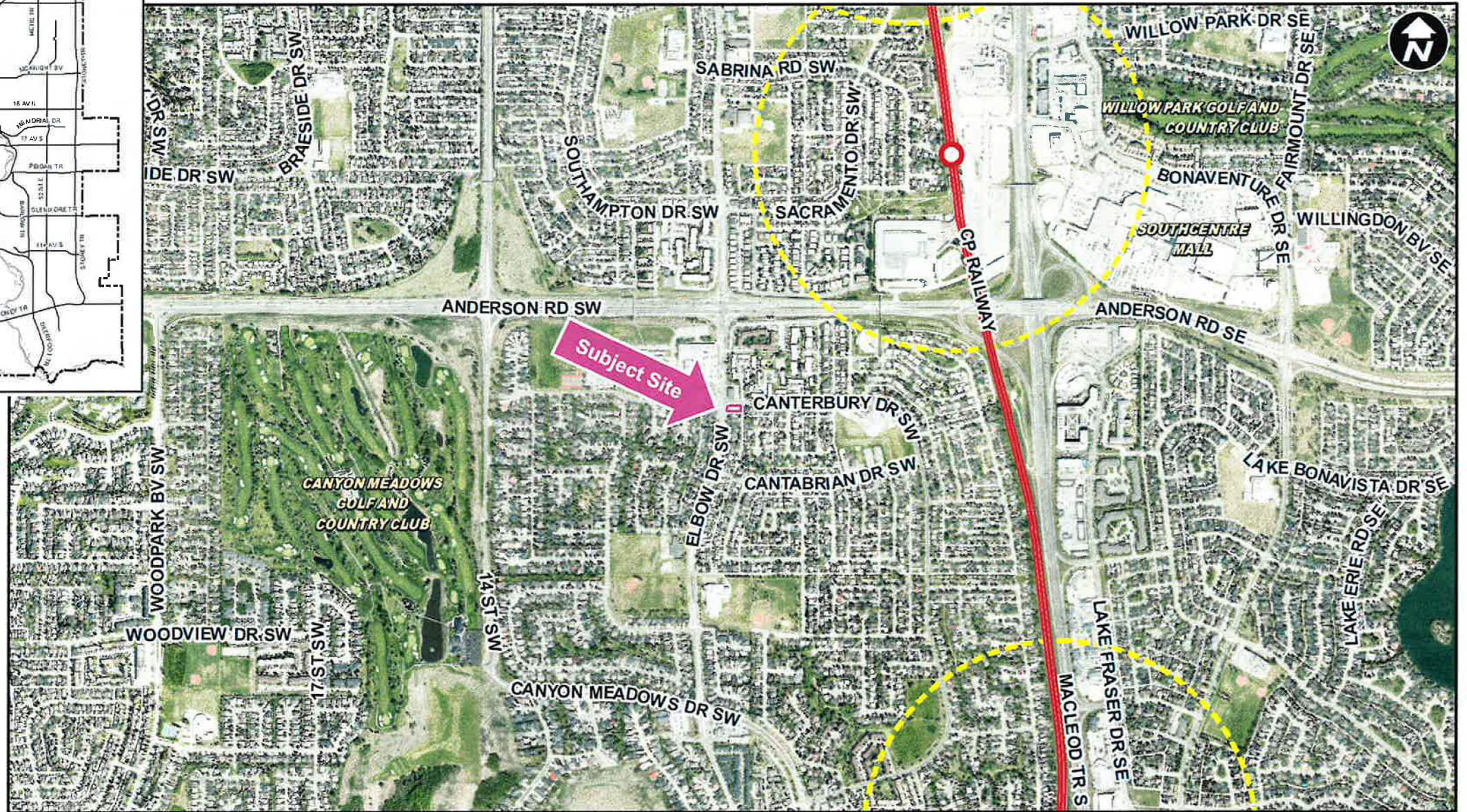
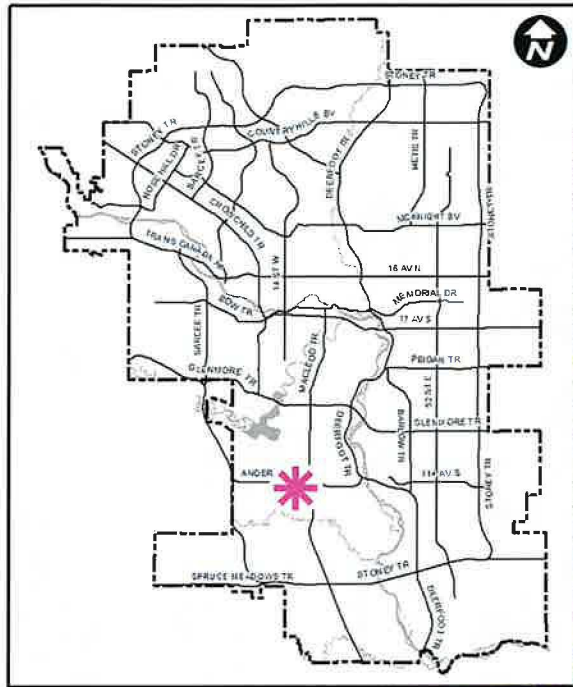
November 14, 2023

CITY OF CALGARY
RECEIVED
IN COUNCIL CHAMBER
NOV 15 2023
ITEM: 7.2.32 - CPC2023-1018
Distrib-Presentation
CITY CLERK'S DEPARTMENT

Calgary Planning Commission's Recommendation:

That Council:

Give three readings to **Proposed Bylaw 227D2023** for the redesignation of 0.08 hectares \pm (0.19 acres \pm) located at 303 Canterbury Drive SW (Plan 5720JK, Block 16, Lot 46) from from Direct Control (DC) District to Direct Control (DC) District to accommodate Child Care Service, with guidelines.



LEGEND

- 600m buffer from LRT station
- LRT Stations**
 - Blue
 - Downtown
 - Red
 - Green (Future)
- LRT Line**
 - Blue
 - Blue/Red
 - Red
- Max BRT Stops**
 - Orange
 - Purple
 - Teal
 - Yellow



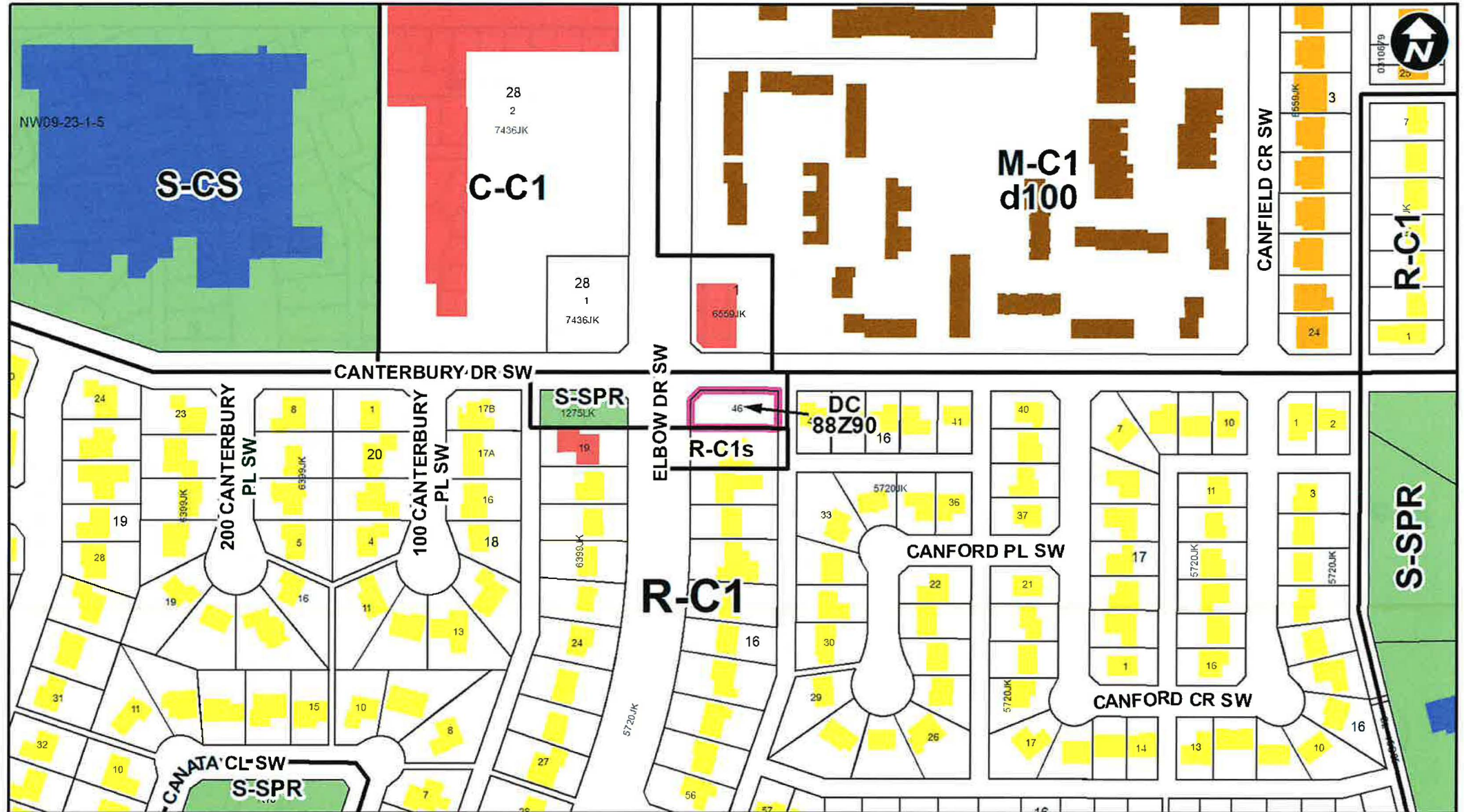
○ Bus Stop

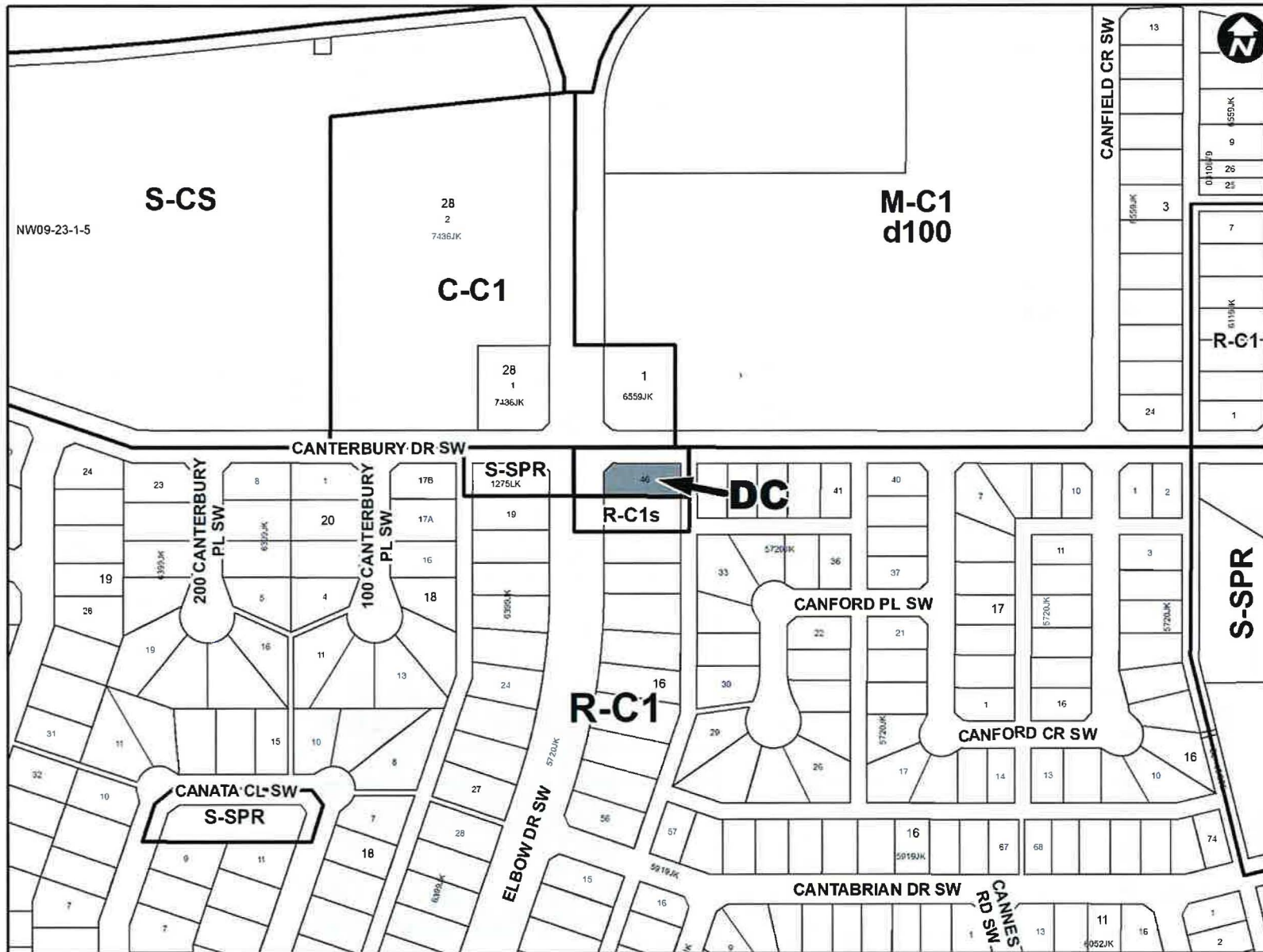
Parcel Size:

0.08 ha
18m x 42m

Surrounding Land Use

- LEGEND**
- Single detached dwelling
 - Semi-detached / duplex detached dwelling
 - Rowhouse / multi-residential
 - Commercial
 - Heavy Industrial
 - Light Industrial
 - Parks and Openspace
 - Public Service
 - Service Station
 - Vacant
 - Transportation, Communication, and Utility
 - Rivers, Lakes
 - Land Use Site Boundary





Proposed Direct Control (DC) District:

- Based on R-C1 district;
- Additional discretionary use of Child Care Service; and
- Maximum number of children, parking and outdoor play space to be reviewed at DP stage.

Calgary Planning Commission's Recommendation:

That Council:

Give three readings to **Proposed Bylaw 227D2023** for the redesignation of 0.08 hectares \pm (0.19 acres \pm) located at 303 Canterbury Drive SW (Plan 5720JK, Block 16, Lot 46) from from Direct Control (DC) District to Direct Control (DC) District to accommodate Child Care Service, with guidelines.

Supplementary Slides

Child Care Service Policy and Development Guidelines



Site selection criteria for a Low Density Residential Areas

Child care services in low density residential area should be located in relationship to activity focus areas such as schools, community centres, recreation facilities, parks and local commercial areas



Child care services should be located on a site that can provide sufficient staff parking and pick-up and drop-off parking.



On sites that can accommodate outdoor play areas for the type of child care being proposed.



Located on collector streets

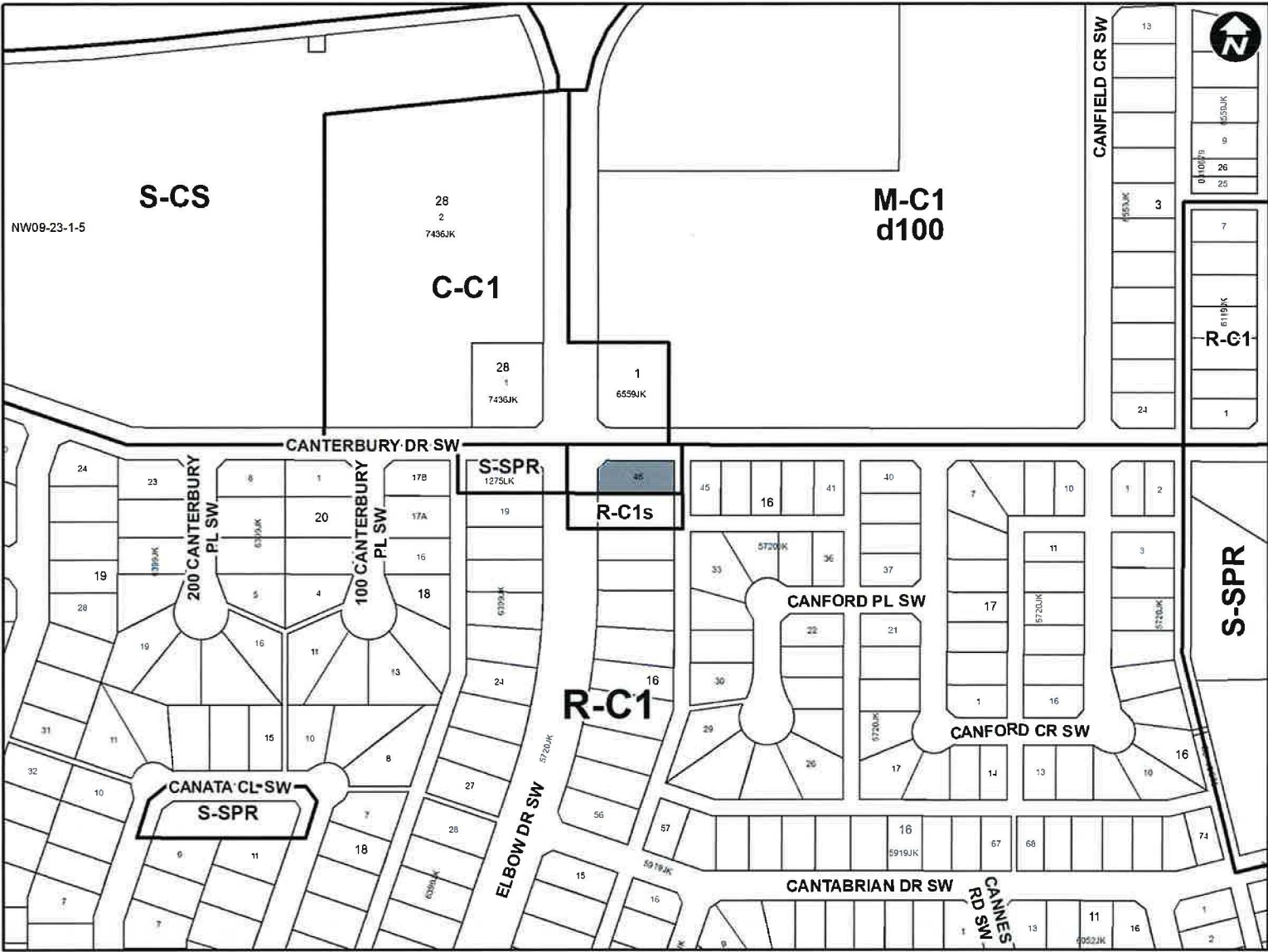


Located on corner parcels (Preferred)



Concentration of child care services should be considered including if there is more than one child care service on the same block





Location of Future Bus Sign 11





Canterbury Dr SW

