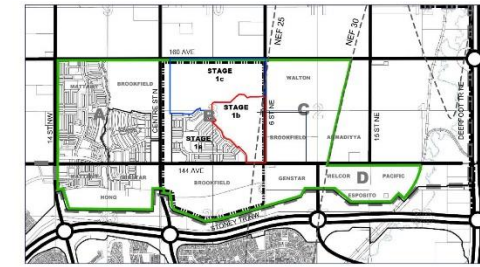
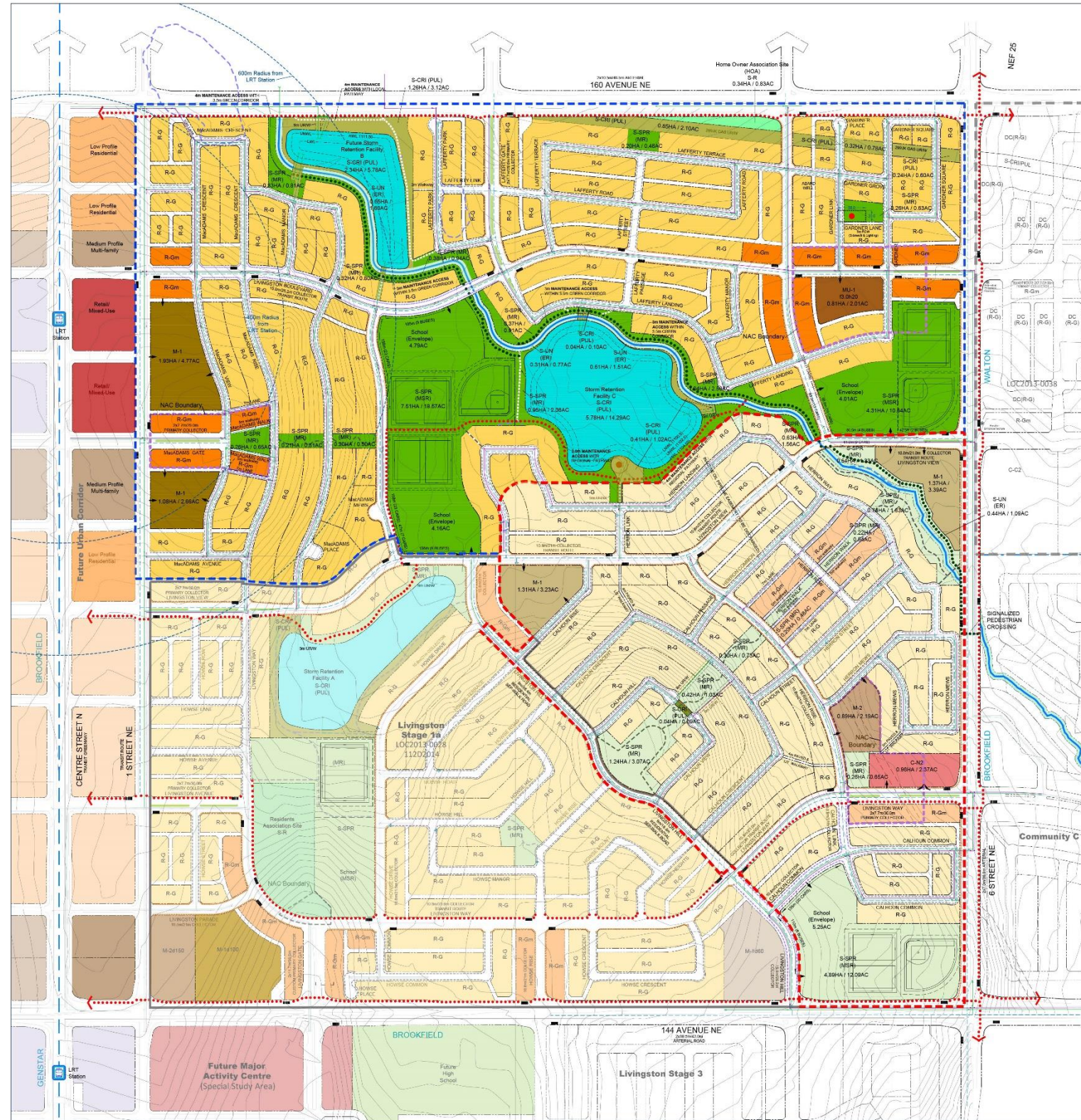


Existing Outline Plan (LOC2016-0181)



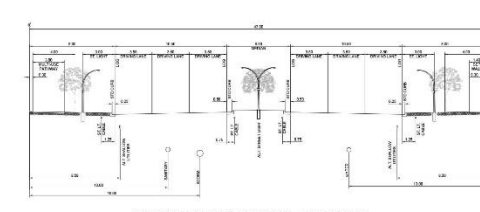
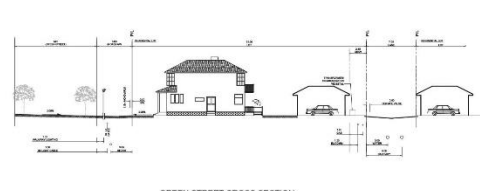
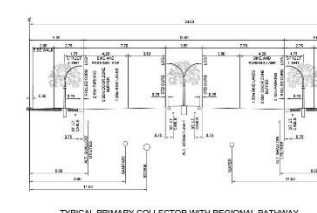
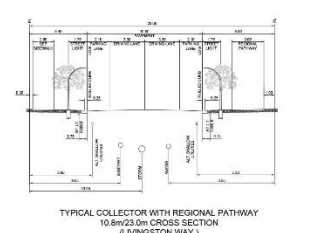
LOCATION MAP

OUTLINE PLAN STATISTICS STAGE 1b & 1c

Category	Value	%
Street Frontage	1872	43.1
Street Frontage with Regional Pathway	1872	43.1
Area Adjustment for M&PUL	114	25.1
Area Adjustment for M&PUL with Regional Pathway	114	25.1
Area Adjustment for M&PUL with Regional Pathway and Regional Pathway	114	25.1
Area Adjustment for M&PUL with Regional Pathway and Regional Pathway and Regional Pathway	114	25.1
Area Adjustment for M&PUL with Regional Pathway and Regional Pathway and Regional Pathway and Regional Pathway	114	25.1
Area Adjustment for M&PUL with Regional Pathway and Regional Pathway and Regional Pathway and Regional Pathway and Regional Pathway	114	25.1

LAND USE STATISTICS STAGE 1b & 1c

Category	Value	%
R-G	172	43.1
R-Gm	114	25.1
R-Gm (M)	114	25.1
R-Gm (S)	114	25.1
R-Gm (M) (S)	114	25.1
R-Gm (M) (S) (M)	114	25.1
R-Gm (M) (S) (M) (S)	114	25.1



- Legend:**
- Livingston Stage 1b Land Use Boundary
 - Livingston Stage 1b & 1c Outline Plan Boundary
 - Contour Interval 1m
 - 1.5m Mono Sidewalk
 - 2.0m Mono Sidewalk
 - 1.5m Separate Sidewalk
 - 2.0m Separate Sidewalk
 - 3.0m Regional Pathway
 - 3.5m Green Corridor
 - 2.5m Local Pathway
 - Any/On Flood Maintenance Access Way
 - Bus Pad Location
 - Existing Class II & above Wetlands
- Deep Services - Proposed**
- Storm Sewer/Marshole
 - Sanitary Sewer/Marshole
 - Water Main/Hydrant
- Deep Services - Existing**
- Storm Sewer/Marshole
 - Sanitary Sewer/Marshole
- Notes:**
- Residential roads are laneless (7.0m/16.0m) unless otherwise noted.
 - All lanes are 7.0m wide unless otherwise noted.



prime consultant:
B&A Planning Group
600, 215 - 9th Ave SW
Calgary, Alberta | T2P 1K3 | bapp.ca
t: 403 269 4733 f: 403 262 4480

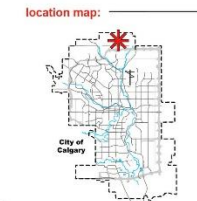
copyright:
Any reproduction or distribution by any person other than authorized by B&A Planning Group is prohibited. Please contact B&A Planning Group at 403 269 4733 if you have any questions. B&A Planning Group and its staff shall be responsible for all dimensions and conditions shown on this drawing.

client:
Brookfield Residential

sub-consultant:
L.A. West Stantec

revisions:

no.	date	description
1	22-12-2019	DTR 1 RESPONSE
2	08-09-2017	DTR 2 RESPONSE
3		
4		
5		
6		
7		
8		



scale:
0 50 100 150 200
SCALE 1:3000

municipal address:
Portion of SEC N & SE 3-26-1-W5
Portion of SEC SW 3-26-1-W5

legal description:
500 144 Avenue NE
308 144 Avenue NE

file description:
Explore: EX2016-0008
LOC: LOC2016-0181
bylaw no.:

file info:
project no.: 1317C
drawn by: Tracy Zhang
start date: Nov. 2015
current date: Apr 07, 2022

project:
Livingston

STAGE 1b & 1c

sheet title:
Outline Plan & Land Use Redesignation